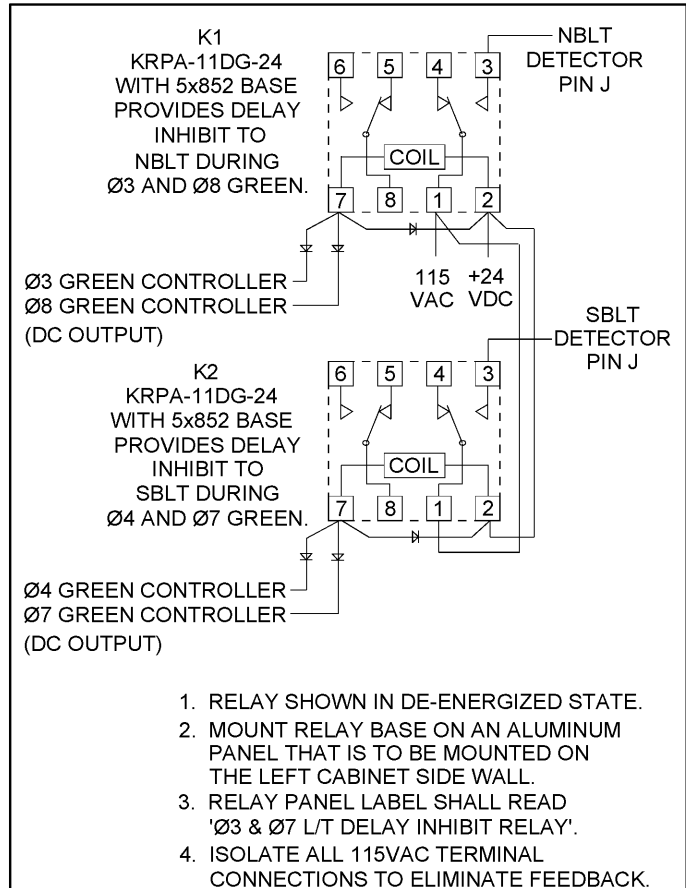


1. RELAY SHOWN IN DE-ENERGIZED STATE.
2. MOUNT RELAY BASE ON AN ALUMINUM PANEL THAT IS TO BE MOUNTED ON THE LEFT CABINET SIDE WALL.
3. RELAY PANEL LABEL SHALL READ 'Ø3 & Ø7 L/T DELAY INHIBIT RELAY'.
4. ISOLATE ALL 115VAC TERMINAL CONNECTIONS TO ELIMINATE FEEDBACK.

Ø3/Ø7 LEFT TURN INHIBIT DELAY RELAY
USE FOR E/W SIDE STREETS



1. RELAY SHOWN IN DE-ENERGIZED STATE.
2. MOUNT RELAY BASE ON AN ALUMINUM PANEL THAT IS TO BE MOUNTED ON THE LEFT CABINET SIDE WALL.
3. RELAY PANEL LABEL SHALL READ 'Ø3 & Ø7 L/T DELAY INHIBIT RELAY'.
4. ISOLATE ALL 115VAC TERMINAL CONNECTIONS TO ELIMINATE FEEDBACK.

Ø3/Ø7 LEFT TURN INHIBIT DELAY RELAY
USE FOR N/S SIDE STREETS

DELAY OVERRIDE RELAY LOGIC FOR SHELF MOUNTED DETECTOR UNITS

INHIBIT DELAY RELAY

CITY OF COLUMBUS, OHIO
DEPARTMENT OF PUBLIC SERVICE
DIVISION OF DESIGN AND CONSTRUCTION

Masoud Zahran

CITY ENGINEER

STD DWG
4333

5/01/2014

SHT 1 OF 1