

- ① ANGLE HAND TAMP AT 45°
- ② ITEM 448 - 2.5" ASPHALT CONCRETE SURFACE COURSE (LIGHT TRAFFIC), PG 64-22
- ③ ITEM 304 - 6" AGGREGATE BASE
- ④ ITEM 204 - SUBGRADE COMPACTION

PAVEMENT DETAIL

SHARED USE PATH

CITY OF COLUMBUS, OHIO
DEPARTMENT OF PUBLIC SERVICE
DIVISION OF DESIGN AND CONSTRUCTION

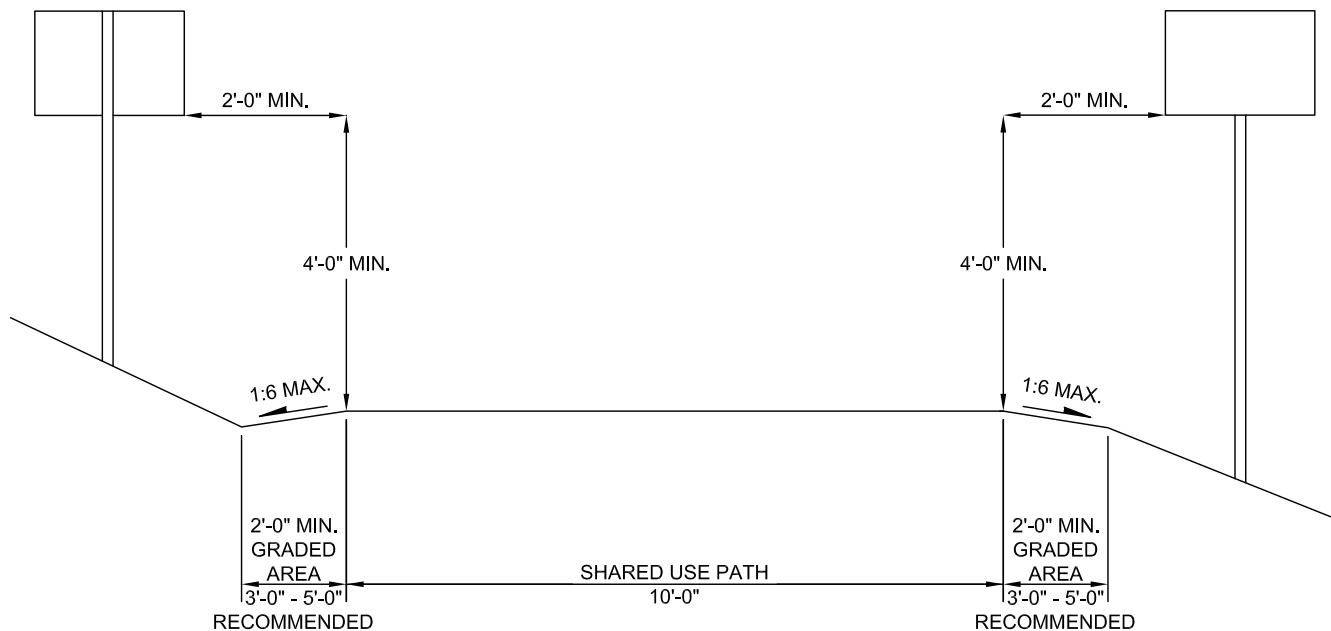
STD DWG
2310

CITY ENGINEER

Hassan Zahran

6/1/14

SHT 1 OF 5



REFERENCE GUIDE TO BICYCLE FACILITIES,
4TH EDITION FOR SAFETY RAIL REQUIREMENTS.

SIGN DETAIL

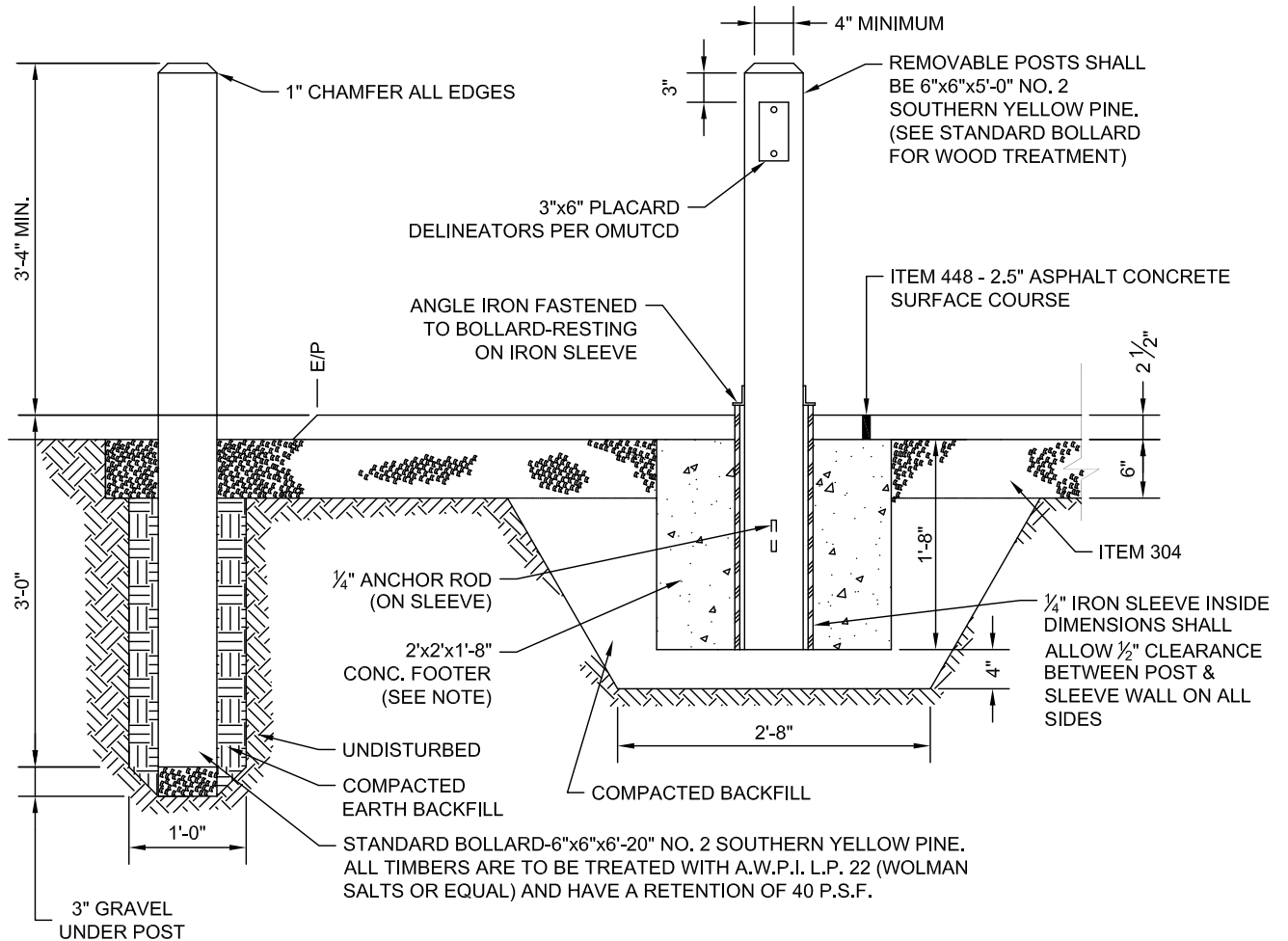
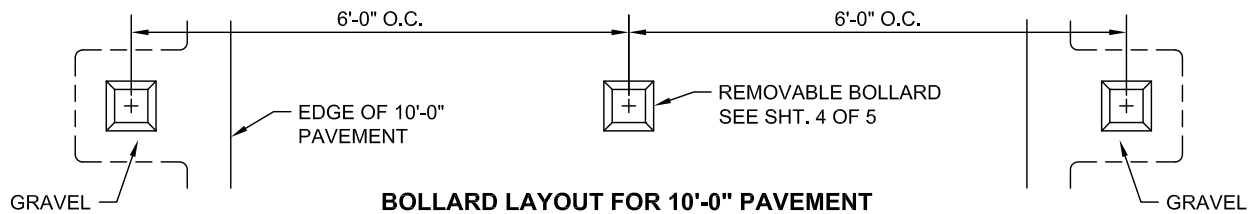
SHARED USE PATH

CITY OF COLUMBUS, OHIO
DEPARTMENT OF PUBLIC SERVICE
DIVISION OF DESIGN AND CONSTRUCTION

STD DWG
2310

6/1/14

SHT 2 OF 5

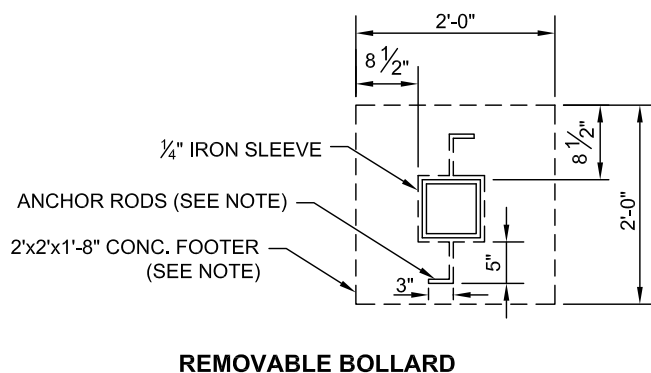


THE CONTRACTOR SHALL INSTALL THE EARTH BACKFILL IN 6" LIFTS AND TAKE CARE TO PLUMB EACH POST.

THE IRON SLEEVES, ANGLE IRON, AND ANCHOR RODS SHALL BE PAINTED WITH TWO COATS OF RUST-OLEUM NO769 DAMP-PROOF RED PRIMER OR EQUAL PRIOR TO INSTALLATION.

THE CONTRACTOR MAY SUBSTITUTE A 24" CIRCULAR FOOTER IN PLACE OF THE ONE SHOWN BELOW.

WOOD BOLLARD DETAIL



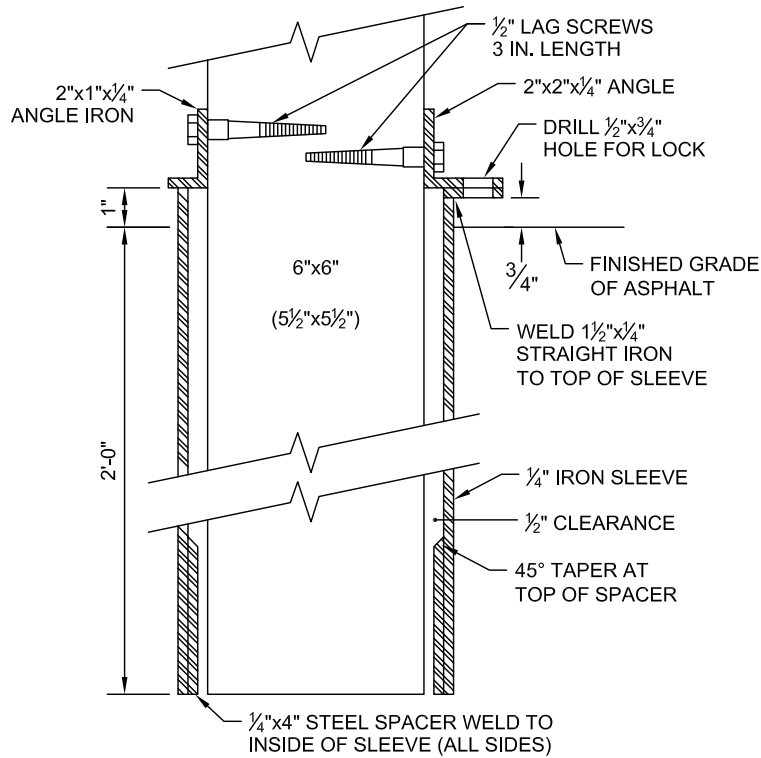
SHARED USE PATH

CITY OF COLUMBUS, OHIO
DEPARTMENT OF PUBLIC SERVICE
DIVISION OF DESIGN AND CONSTRUCTION

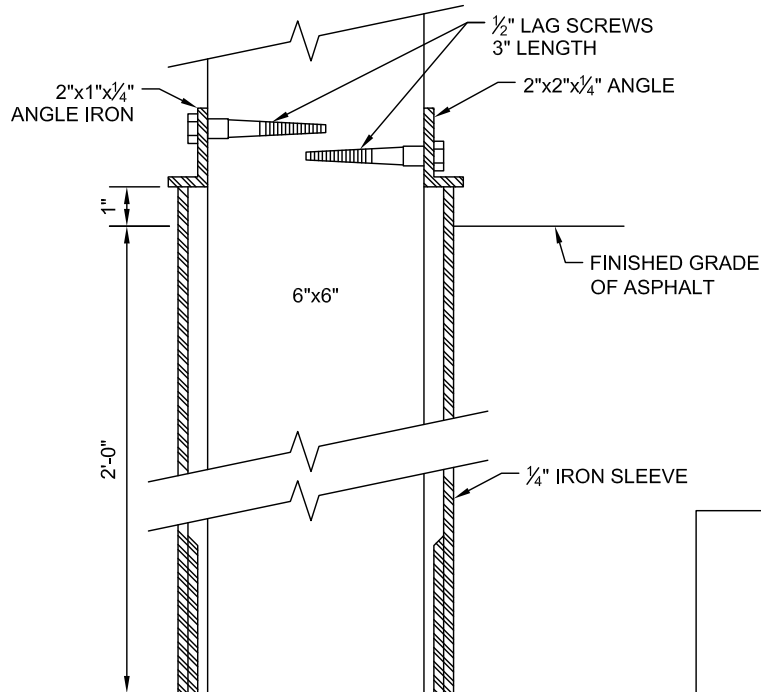
STD DWG
2310

6/1/14

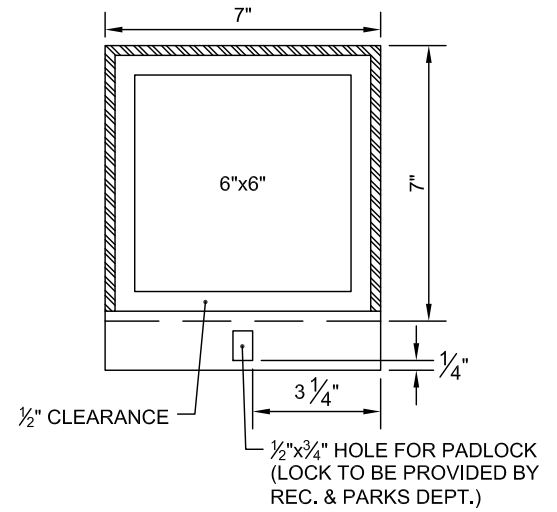
SHT 3 OF 5



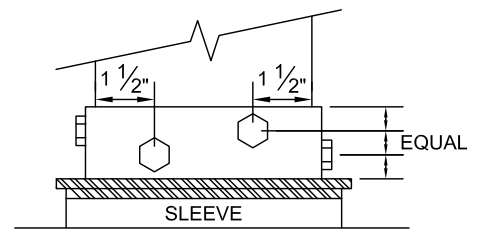
SECTION A-A



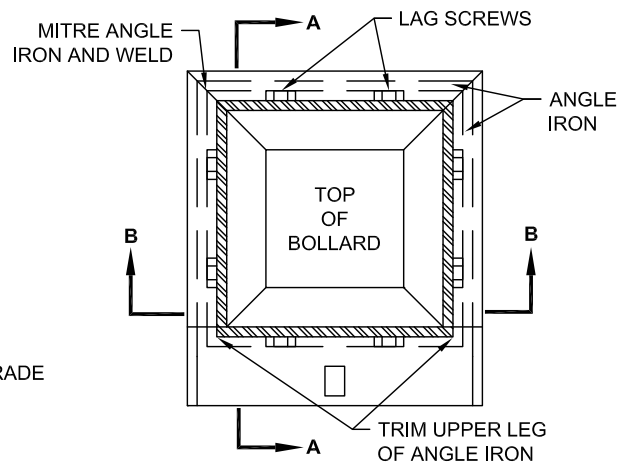
SECTION B-B



PLAN



ELEVATION



PLAN

REMOVABLE BOLLARD DETAIL

SHARED USE PATH

CITY OF COLUMBUS, OHIO
DEPARTMENT OF PUBLIC SERVICE
DIVISION OF DESIGN AND CONSTRUCTION

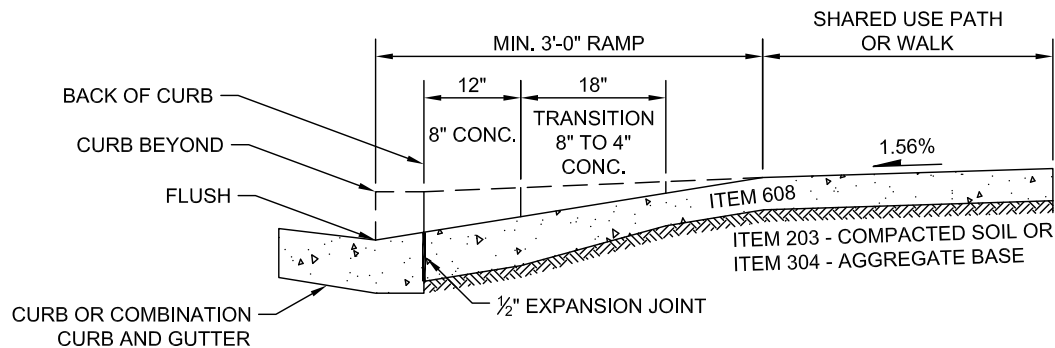
STD DWG

2310

6/1/14

SHT 4 OF 5

EXPANSION JOINTS SHALL BE PLACED TO FORM UTILITY STRIPS WHERE REQUIRED AND WHEREVER NEW CONCRETE TOUCHES EXISTING CONSTRUCTION.



SHT 5 OF 5