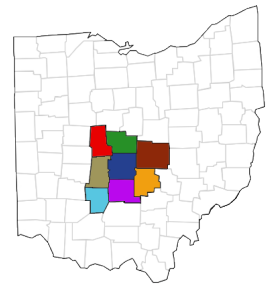


Central Ohio Area Agency on Aging HOUSING Guide for Seniors & Individuals who have a Disability



Counties Served

Delaware
Fairfield
Fayette
Franklin
Licking
Madison
Pickaway
Union



614-645-7250
1-800-589-7277
www.coaaa.org



Your Aging and Disability Resource Network

This information is provided by the: The National Family Caregiver Support Program.

This is a nationally funded program operated in Central Ohio by the Central Ohio Area Agency on Aging (COAAA). It offers caregiver workshops and funds services designed to assist caregivers on a short term basis. The services include: information and assistance, counseling, respite, and other supplemental services.

Also provides Monthly Caregiver Support Groups at the Central Ohio Area Agency on Aging, 174 E. Long St., Columbus, OH, 3rd Wednesday of each month, two groups 12-1pm and 5:30-7pm. Call Lynn Dobb or go to the Website for more information.

Request a copy or download our other guides: The Caregiver Toolbox, Central Ohio Private Homecare Guide, Central Ohio Utility Guide, Central Ohio Prescription Guide, Central Ohio Support Group Guide, and Books, Videos, and Websites for Family Caregivers.

For more information call 1-800-589-7277 or visit the COAAA website (www.coaaa.org) Or in your county, call one of these agencies:

- **Delaware**-Council for Older Adults 740-363-6677
- **Fairfield**-Meals on Wheels Older Adult Alternatives of Fairfield Co. 740-681-5050
- **Fayette**-Community Action Commission of Fayette Co. 740-335-7282
- **Franklin**-Franklin Co. Office on Aging 614-525-6200
- **Licking**-Licking Co. Aging Program 740-345-0821 or 1-800-452-0097
- **Madison**-Madison Co. Senior Center 740-852-3001
- **Pickaway**-Pickaway County Senior Center 740-474-8831
- **Union**-Union County Senior Services 937-644-9629

Central Ohio Housing Information

There are numerous housing options for seniors (at least age 55) and individuals with a disability. This guide includes descriptions of each type of housing, information about how to get a list of apartments or other kinds of housing, and helpful information about additional topics shown below.

Table of Contents

<u>Topic</u>	<u>Page</u>
1. Apartments	
• Apartments for those with a low income that rent for approximately 30% of income (<i>Subsidized Apartments</i>)	2
• Apartments that rent for a little less than market rate (<i>Tax Credit Apartments</i>)	2
• COAAA Housing Support Programs	3
• Apartments for Individuals with a Disability	4
• Apartments for Seniors Raising Children	5
• Apartments for Individuals who have Mental Illness, Substance Abuse and Histories of Homelessness	5
• Additional Information on Apartments	6
2. Central Ohio Public Housing Options	6
3. Housing Choice Vouchers (HUD Section 8)	7
4. Central Ohio Homeless Shelters	7
5. Central Ohio Adult Care Facilities	8
6. Central Ohio Retirement Campuses	8
7. Central Ohio Assisted Living Facilities	9
8. Central Ohio Nursing Facilities	9
9. Housing Related Issues	
○ Preventing Foreclosure	10
○ Tenant Advocacy	10
○ Reverse Mortgage	11
○ Universal Design	12
○ Questions to Consider when Looking for Housing	13
10. List of Central Ohio Apartments for Seniors/Disabled Persons	15
11. List of Central Ohio Homeless Shelters	23
12. List of Central Ohio Adult Care Facilities	27
13. List of Central Ohio Assisted Living & Skilled Nursing Facilities	33

This resource manual is brought to you by the Central Ohio Area Agency on Aging. Any unauthorized use and/or duplication of this material without the prior express and written permission from the Central Ohio Area Agency on Aging is strictly prohibited.

This manual is not a substitute for professional advice and care. If you have specific needs, please see a professional provider. Links to web sites are provided for convenience and do not constitute or imply endorsement. Every reasonable effort is taken to ensure accurate information, however we cannot guarantee completeness or timeliness. COAAA assumes no responsibility for outcomes resulting from the use of information contained in this manual.

1. Apartments

Subsidized Apartments

- Most of the apartments listed are ***subsidized***, meaning they allow renter to pay approximately 30% of their income towards rent. These apartments have requirements about the amount of income and most of them discount medical expenses when calculating the rent. Often, there are waiting lists for these apartments.
- Consumers looking for a subsidized apartment are advised to get on the waiting list for any apartment complex where they want to live. Contact the apartment manager to complete an application.
- **Inspection Scores** for any type of subsidized property may be found at [www. section8housing.findthebest.com](http://www.section8housing.findthebest.com).

Tax Credit Apartments

- These allow the tenant to pay somewhat less than the market rate for an apartment. These apartments have requirements about income. These apartments may have a waiting list. Contact the apartment manager to complete an application.



COAAA Housing Support Programs

1. Some apartment buildings have a Service Coordinator employed by COAAA. The coordinator is a social worker who is on site a specified number of hours to help residents who are elderly or disabled with providing support and linkage to community resources. COAAA provides service coordinators in the following locations:

<ul style="list-style-type: none">• Chandler Arms 305 N. Gould Columbus, OH 43209• Jaycee Arms 266 E. Main St. Columbus Ohio 43215• Jenkins Terrace 1100 E. Broad St. Columbus, Ohio 43205	<ul style="list-style-type: none">• Mt. Vernon Plaza 1035 Atchenson Columbus, Ohio 43203• Sharon Glyn 914 Sharon Glyn Village Newark, Ohio 43055• Wellington Village 5863 Scioto-Darby Road Hilliard, Ohio 43026
---	---

2. Some apartments provide services through the Congregate Housing Services Program (CHSP). This program is limited in size. Residents are required to pay 10% of their income towards the cost of care. These apartment buildings are:

Jaycee Arms 266 E. Main Street Columbus OH 43215 614-228-1201	Nazareth Towers 300 East Rich Street Columbus OH 43215 614-464-4780
Jaycee Village 5905 Beechcroft Columbus OH 43229 614-890-6711	Worley Terrace 99 S Central Ave. Columbus OH 432225 614-279-7012

Many other apartments for seniors have a person working on site of the apartments called a “**Service Coordinator**.” This person is usually not an employee of the apartment company but typically is from a non- profit agency in the community.

Apartments for Individuals with a Disability

- An individual with a disability can apply for and live in low-income (subsidized or tax credit) housing under HUD rules and regulations.
- For individuals with a mobility (walking) limitation of any age, there are accessible apartments available in *senior* low-income housing complexes/buildings. There are a limited number of accessible apartments so there is usually a longer waiting list for one of them. For a list of apartment complexes with accessible units, contact FCOA or COAAA (numbers listed below).
- Individuals with a disability OTHER than a mobility (walking) limitation will need to ***meet the age requirements for designated senior housing***, or look for family housing. This would include someone with epilepsy, who is blind, who has hearing limitations, or another disability that does not limit walking.
- Contact the Central Ohio Area Agency on Aging at 614-645-7250 or 800-589-7277 or www.coaaa.org for an 8 county central Ohio list. Also contact the Franklin County Office on Aging at 614-525-6200 or www.officeonaging.org for a Franklin county list.
- For Family Housing, visit www.HUD.gov. On that website, click on “Get Rental Help”, enter the city or zip code where you want to live and the number of bedrooms needed. Then you will need to make an application for each one. There may be a waiting list.
- *Individuals with a developmental disability* also can seek assistance from the County Board of Developmental Disabilities in their county.
- Federal laws provide the following rights to persons with disabilities:
 - Prohibits discrimination against persons with disabilities.
 - Requires housing providers to make reasonable accommodations for persons with disabilities
 - Requires housing providers to allow persons with disabilities to make reasonable modifications.
 - For more information on these rights, visit www.disability.gov.

Apartments for Seniors Raising Children

- Low-income seniors who are raising children can apply for family housing. The website www.HUD.gov has a list of family housing. On that website, click on “Get Rental Help”, enter the city or zip code where you want to live and the number of bedrooms needed. Then you will need to make an application for each one. There may be a waiting list.
- A guide for grandparents or other relatives raising children is available to download at www.odjfs.state.oh.us. It is called the “Kinship Care Guide.” In Franklin County, there is also a Kinship Care Support Program and information is at www.clintonvillecrc.org. Help can be provided in many areas including support groups, food, housing, health care and transportation.

Apartments for Individuals in Franklin County who have Mental Illness, Substance Abuse, & Histories of Homelessness

- The Ohio Long Term Care Consumer Guide website www.ltc.ohio.gov has a section called “Supportive Housing” and one called “Residential Treatment” which list facilities by zip code and city. Each listing has a variety of information about it including phone numbers. The definition of each type of housing is found on the website.
- The Community Housing Network has more than 1200 apartments directed towards those persons suffering from mental illnesses & addictions in Central Ohio. CHN has 24-hour on-call capacity. Use the CHN website, www.chninc.org, or call 614-487-6700.
- In addition, there are 5 apartment complexes in Franklin County for people who were formerly homeless. One is for veterans who were homeless. Contact the Community Shelter Board at 614-487-6700 to apply.

Additional Information on Apartments

- Apartments for seniors have a minimum age limit, usually 55, 62 or 65.
- In Franklin County, the Franklin County Office on Aging (FCOA) maintains a **Senior Citizen Housing List** which has additional detail about apartments, such as whether or not utilities are included. To get a copy of this list, call FCOA at 614-525-6200. You can also look on their website: www.officeonaging.org
- **The Ohio Housing Locator is a free**, searchable database of affordable, accessible rental housing throughout Ohio. Landlords can enter information about their rental housing, including tenant eligibility, accessibility features and current vacancies. The properties are not licensed or certified by the State of Ohio. The website is www.ohiohousinglocator.org.
- A list of Central Ohio Apartments can be found on p. 13 of this guide.

2. Central Ohio Public Housing Options

Metropolitan Housing Authorities operate public housing buildings and complexes. To get information or apply for public housing, contact the Housing Authority in your county:

Delaware County	740-369-1881
Fairfield County	740-653-6618
Fayette County	740-658-6618
Franklin County	614-421-6180
Licking County	740-349-8069
Madison County	740-852-1888
Pickaway County	740-477-2514
Union County	740-369-1881

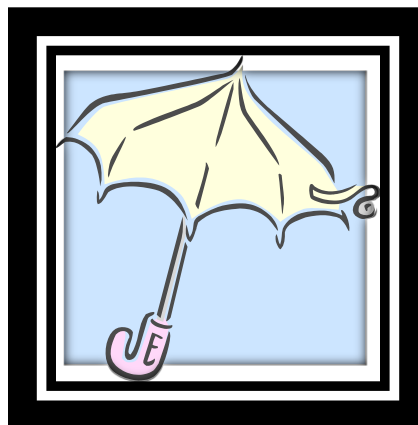
3. Housing Choice Vouchers (HUD Section 8)

- Vouchers provide housing assistance for very low-income families, the elderly and people with disabilities, allowing them to live in safe, quality affordable housing in the private market. Participants are able to find their own housing, including single-family homes, townhouses or apartments in neighborhoods of their choice.
- Participants are free to choose any housing that meets the requirements of the program. They are not limited to units located in housing projects.
- Most counties have an extremely long waiting list for a voucher. To be added to the waiting list, contact the Metropolitan Housing Authority in your county. (See list on p. 5.)
- **Inspection Scores** for any type of subsidized property may be found at www.section8housing.findthebest.com.

4. Central Ohio Homeless Shelters

Homeless shelters provide a place for someone to spend the night. Usually the person must leave the shelter during the day. A list of homeless shelters is available from COAAA at 614-645-7250 or can be found on pp. 22-25 of this booklet. Homeless individuals in Franklin County need to contact HandsOn Central Ohio at 888-474-3587 to find a bed in a shelter.

A list of Central Ohio Homeless Shelters can be found on p.19 of this guide.



5. Central Ohio Adult Care Facilities

Adult Care Facility (ACF): A licensed housing facility which provides accommodations and supervision for 1-16 unrelated adults, who can be provided personal care services. The Ohio Department of Mental Health and Addiction Services licenses facilities in the State of Ohio. Their website is www.mha.ohio.gov for lists of facilities by county. The number for information is 614-466-1590. A list of Central Ohio Adult Care Facilities can be found on p.23 of this guide.

Types of Facilities:

- **Adult Foster Home--** A residence which will provide accommodations, supervision and personal care services to 1-2 unrelated adults.
- **Adult Family Home:** A residence which provides accommodations to 3-5 unrelated adults, supervision, and personal care services to at least three individuals.
- **Adult Group Home:** An adult care facility (ACF) which provides accommodations to 6-16 unrelated adults, supervision, and personal care services to at least three individuals.

6. Central Ohio Retirement Campuses

- These offer a grouping of housing facilities for older adults with multiple levels of living options, including; independent, congregate, personal assistance, and in some cases skilled nursing care. Residents may or may not pay an endowment fee to obtain services to suit their changing needs. The website www.seniorhomes.com has information describing retirement communities.
- Some retirement communities go through a lengthy process to become accredited by a national agency. These communities are called Continuing Care Retirement Communities (CCRCs). They typically contain a number of different living arrangements from independent to skilled nursing care. CCRC's often require the payment of an entrance fee or endowment in exchange for a promise of continuing care to the resident for a prescribed period usually the life of the resident. There are three accredited CCRCs in Central Ohio: Kendal at Granville, Friendship Village Dublin, and Westminster-Thurber. For more information on accreditation, visit www.carf.org.

7. Central Ohio Assisted Living Facilities

- Assisted living in a facility provides the consumer with a greater range of services. The Ohio Long Term Care Consumer Guide lists Assisted Living facilities by county and zip code. It includes helpful information to compare facilities. The website is www.ltc.ohio.gov.
- The Ohio Assisted Living Association also has a directory of Assisted Living facilities with information on services and fees. It is available at www.ohioassistedliving.org or your public library.
- The Assisted Living Waiver program provides care for Medicaid-eligible adults in approved assisted living facilities. For information on assisted living facilities which accept the Assisted Living Medicaid Waiver, go to www.ltc.ohio.gov.
- A list of Central Ohio Homeless Assisted Living Facilities can be found on p. 29 of this guide.

8. Central Ohio Nursing Facilities

- The Ohio Long Term Care Consumer Guide lists nursing homes by county and by zip code. Website is www.ltc.ohio.gov.
- The Federal government keeps a database of over 17,000 nursing homes in the United States. Information is available on 10 quality indicators, examining such factors as use of physical restraints and the percentage of residents who have bed sores. This information may be found at www.medicare.gov. The information also can be accessed by calling 1-800-MEDICARE.
- A list of Central Ohio Nursing Facilities can be found on p.29 of this guide.



9. Housing Related Issues

Preventing Foreclosure

- The first thing to do is to **contact the mortgage lender** and let them know about problems, such as medical needs or a job loss. Some lenders will work with you to help prevent foreclosure.
- There are programs available to help. **The Columbus Urban League(CUL)** is a HUD-approved housing counseling agency. Their website is www.cul.org and the phone number is 614-257-6300 ext. 300. **HOMEPORT** is another; the website is www.homeportohio.org and the phone number is 614-221-8889.
- The website for the U.S. Housing and Urban Development agency, www.HUD.gov, has information on government programs including:
 - Making Home Affordable
 - Home Affordable Modification Program
 - Principal Reduction Alternative
 - Second Lien Modification Program

Tenant Advocacy

- **The Ohio Bar Association** at www.ohiobar.org--Information on Landlord/Tenant rights, laws and rules in Ohio.
- **Coalition on Homelessness and Housing in Ohio(COHHIO)**
 - A statewide advocacy group and service providers network dedicated to ending homelessness and ensuring that all Ohioans have decent, safe, fair, affordable housing, especially those with low-income and special needs.
 - COHHIO's Tenants Outreach program provides information and support to tenants and advocates throughout Ohio on rental rights, fair housing, housing advocacy and tenant organizing. The primary focus is on tenants living in federally assisted housing but staff will try to be of service to any Ohioan with questions about her/his housing rights.
 - Staff can answer general questions about situations that come under the jurisdiction of the Ohio Landlord Tenant Law or HUD regulations. They cannot provide legal advice on specific issues or concerns. To reach the Tenant Outreach program, leave a message for COHHIO staff at (614)280-1984 or 888-485-7999 or www.cohhio.org.

- In Franklin County, the **Columbus Urban League** provides fair housing outreach and education, housing discrimination complaint investigation, landlord/tenant mediation and tental counseling. The Website is www.cul.org and the phone is 614-257-6300 ext. 300.
- **Legal Aid Organizations in Central Ohio**
 - **Legal Aid Society of Columbus** (Franklin & Madison Counties), 1108 City Park Ave. Columbus, Oh 43206. Call 614-241-2001 or 888-246-4420, www.columbuslegalaid.org
 - **Marion Office--The Legal Aid Society** (Delaware & Union Counties), 150 Oak Street. Marion, Oh 43302. Call 740-383-2162 or 888-301-2411, www.columbuslegalaid.org.
 - **Southeastern Ohio Legal Services-** (Fairfield, Fayette, & Pickaway Counties), 11 East Second Street, Chillicothe, Oh 45601. Call 740-773-0012 or 800-686-3668, www.seols.org
 - **Newark Office--Southeastern Ohio Legal Services** (Licking County), 15 West Locust Street, Suite A, Newark, Oh 43055. Call 740-345-0850 888-831-9412, www.seols.org
- **ProSeniors Legal Hotline**
 - ProSeniors staffers screen clients and set-up phone appointments between clients and volunteer attorneys, according to each volunteer's practice area(s) and schedule. They also have a phone line which offers 30 minutes of no cost legal advice to seniors. Address: 7162 Reading Rd, Suite 1150 Cincinnati, OH 45237 Call: 513-345-4160 or 800-488-6070. The website is www.proseniors.org.
 - ProSeniors publishes many pamphlets and some on housing issues. They can be easily downloaded from their website.

Reverse Mortgages

- **Reverse mortgages** are loans that allow homeowners aged 62 and over to convert home equity (the amount they have paid into their home) into cash and to keep living at home for as long as they want. According to the **National Council on Aging (NCOA)**, a reverse mortgage can help older adults make ends meet and stay independent, but they are not for everyone.
- The 2013 version of “**Use Your Home to Stay at Home**” is a helpful tool for decision-making related to reverse mortgages. The guide can be downloaded for free at www.ncoa.org/RMBooklet.
- Before getting a reverse mortgage, it is wise to get counseling from a government-approved agency. NCOA is one of nine approved counseling agencies. They will help you:
 - Evaluate the pros and cons of a reverse mortgage for your situation.
 - Apply for public and private benefits that can help you pay for needs like home energy, meals, and medications.
 - Find services in your community that can help you stay independent longer.



Universal Design

- **Universal Design** makes homes safer, easier and more convenient to live in for everyone of any age or ability. It involves having products and spaces that can be used by the widest range of people possible. There is a wide spectrum of human abilities. Everyone, even the most able-bodied person, passes through childhood, periods of temporary illness, injury and old age.
- Whether you are building a new home, or repairing or renovating an existing home, you too can incorporate, through home modification, characteristics of Universal Design. Home modification can vary from building a new home with universally designed features, to simple installation of lever door knobs on an older home to more complex structural changes in an existing home, such as installing a walk-in shower or an accessible ramp. The goal of home modification for existing homes is not to entirely redesign the home but to make a range of changes or repairs that result in your home being a comfortable, user-friendly, and safer place to live.
- For more information, see www.aarp.org/universalhome/solutions

Questions To Consider when Looking for Housing

- Do I want or need to live near family or friends?
- Do I need supportive services, such as, assistance with eating, bathing, grooming?
- Does the apartment or facility have access to public transportation or on-site parking?
- What are the pet policies?
- Will I have access to shopping, banking or pharmacies?
- Will I have access to community facilities such as hospitals, doctors or other medical professionals?
- Is the apartment or facility in a safe neighborhood, or does it have a security service?
- What is the cost of living there? Are additional services added onto the cost?
- Can the facility meet all of your needs or only some?
- Is my family supportive of my decision?
- Have I reviewed all available options to stay at home?

Central Ohio List of Senior & Disabled Apartments



Note: Every reasonable effort is taken to ensure accurate information. However we cannot guarantee completeness or timeliness of information. Some of the names, addresses or phone numbers of the properties may have changed since the printing of this manual. List Updated September 2014.

Key for Terms:
 SEN=Senior
 PWD=Person with a Disability
 FAM=Family Housing
 N/A=No Answer Given

APARTMENT LIST FOR CENTRAL OHIO, SEPTEMBER, 2014

<u>FacilityName</u>	<u>Address</u>	<u>City</u>	<u>County</u>	<u>Zip</u>	<u>Phone</u>	<u>SEN/Age?</u>	<u>PWD/Age?</u>	<u>FAM?</u>	<u>Subsidy/Tax Credit?</u>	
			DELAWARE							
Austin Manor	95 Elizabeth Street	Delaware	Delaware	43015	740/363-0211	Any Age	Yes/18	Yes	Neither	
Ashley Village Apartments	240 S. Main Street	Ashley	Delaware	43033	937/544-3353	62	Yes/Any	No	Subsidy	
Delaware Manor	200 Center Street	Ashley	Delaware	43003	740/747-3141	Any Age	Yes/Any	Yes	Subsidy	
Delaware Village Ltd.	675 Fern Drive	Delaware	Delaware	43015	740/369-1313	Any Age	Yes/18	No	Both	
Franklin House	6233 Rail Timber Way	Lewis Center	Delaware	43035	740/549-0094	62	Yes/62	No	Subsidy	
Georgetown Village Square	100 Georgetown Drive	Delaware	Delaware	43015	740/548-5060	62	Yes/Any	No	Subsidy	
Londontown Apartments	300 Cheisa Street	Delaware	Delaware	43015	740/363-1235	60	No	No	Neither	
Oakhurst Place Apartments	2178 Bruce Road	Delaware	Delaware	43015	740/369-5267	62	Yes/62	No	Subsidy	
Rainbow Place	150 North Walnut Street	Sunbury	Delaware	43074	740/965-3459	62	Yes/Any	No	Subsidy	
St. Michael's Community	35 Lexington Blvd	Delaware	Delaware	43015	740/363-3748	62	N/A	No	Neither	
Sunbury Park Apartments	131 South Miller Drive	Sunbury	Delaware	43074	740/965-6368	62	Yes/Any	No	Subsidy	
Sunnyview Square	69 Rock Creek Drive	Delaware	Delaware	43015	740/369-9042	60	Yes/Any	No	Subsidy	
<u>FacilityName</u>	<u>Address</u>	<u>City</u>	<u>County</u>	<u>Zip</u>	<u>Phone</u>	<u>Sen/Age?</u>	<u>PWD/Age?</u>	<u>FAM?</u>	<u>Subsidy/Tax Credit</u>	
			FAIRFIELD							
Baltimore Manor	301 Kellner Avenue	Baltimore	Fairfield	43105	740/862-6731	55	Yes/Any	Yes	Tax Credit	
Canal Place Senior Apartments	107 South Columbus Street	Lancaster	Fairfield	43130	740/ 681-2795	55	Yes/55	No	Tax Credit	
Hunterwood Park	330 Trace Drive	Lancaster	Fairfield	43130	740/687-1314	62	Yes/62	No	Subsidy	
Lakeland Town Homes	2121 Refugee Road	Millersport	Fairfield	43046	740/467-2784	Any Age	Yes/Any	Yes	Subsidy	
Lancaster Club Apartments	180 Sells Road	Lancaster	Fairfield	43130	740/653-3616	Any Age	Yes/Any	Yes	Subsidy	
Little Brook Estates	154 Little Brook Drive	Lancaster	Fairfield	43130	740/654-9727	Any Age	Yes/Any	Yes	Neither	
Mt. Pleasant Place	963 Prestige Blvd	Lancaster	Fairfield	43130	740-681-9659	62	Yes/Any	No	Subsidy	
Pickfar Square	310 Jericho Road	Pickerington	Fairfield	43147	614/833-2772	62	Yes/Any	No	Subsidy	
Pleasant View Place	1690 Chartwell Drive	Lancaster	Fairfield	43130	740/689-1113	62	No	No	Subsidy	
Pleasantview, Ltd.	114 Academy St, P.O. Box 237	Pleasantville	Fairfield	43148	740/468-3495	62	Yes/Any	No	Subsidy	
Pleasantville Commons, Ltd.	3610 Richland Road	Pleasantville	Fairfield	43148	740/468-3575	Any Age	Yes/Any	Yes	Both	
Seton Lancaster	232 Gay Street	Lancaster	Fairfield	43130	740-681-1403	62	Yes/Any	No	Subsidy	
Walnut Creek Village	1051 South Main Street	Baltimore	Fairfield	43105	740/862-6570	62	N/A	No	Subsidy	
Windsor Place	141 Graceland Drive	Lancaster	Fairfield	43130	740/687-1664	62	N/A	No	Subsidy	
<u>FacilityName</u>	<u>Address</u>	<u>City</u>	<u>County</u>	<u>Zip</u>	<u>Phone</u>	<u>Sen/Age?</u>	<u>PWD/Age?</u>	<u>FAM?</u>	<u>Subsidy/Tax Credit?</u>	
			FAVETTE							
Hattie Jackson Commons	1215 Gregg Street	Washington	Fayette	43160	740/335-5404	62	Yes/18	No	Subsidy	
Hattie Jackson II	1225 Gregg Street	Washington	Fayette	43160	740/335-5404	62	No	No	Subsidy	
Jeffersonville Green Apartments	11 Colonial Drive	Jeffersonville	Fayette	43128	740/426-6564	Any Age	Yes/18	Yes	Subsidy	
Seton Washington Courthouse	400 N Glenn Ave	Washington	Fayette	43160	740-335-2292	62	N/A	No	Subsidy	
The Village I and II	611 Village Court	Washington	Fayette	43160	740/335-1412	65	N/A	No	Subsidy	
Washington Park, Ltd.	99 Summit Lane	Washington	Fayette	43160	740/335-8169	62	Yes/Any	No	Subsidy	
Washington School Apartments	N. North Street	Washington	Fayette	43160	740/333-6220	55	Yes/55	No	Tax Credit	

Key for Terms:
 SEN=Senior
 PWD=Person with a Disability
 FAM=Family Housing
 N/A=No Answer Given

APARTMENT LIST FOR CENTRAL OHIO, SEPTEMBER, 2014

FacilityName	Address	City	Area	County	Zip	Phone	Sen/Age?	PWD/Age?	FAM?	Subsidy/ Tax Credit?
			CENTRAL	FRANKLIN						
Bollinger Tower (CMHA)	750 North High Street	Columbus	Central	Franklin	43215	614/294-2872	62	No	No	Subsidy
Cambridge Arms	926 East Broad Street	Columbus	Central	Franklin	43205	614/253-0984	62	Yes/55	No	Subsidy
Columbus Elderly apartments	155 N. 17th Street	Columbus	Central	Franklin	43203	614/263-5152	55	Yes/55	No	Tax Credit
Columbus Park Apartments	2143 Winslow Drive	Columbus	Central	Franklin	43207	614/445-8301	Any	Yes/55	Yes	Subsidy
Commons at Buckingham	328 Buckingham Street	Columbus	Central	Franklin	43215	614/224-3848	18	Yes/18	No	Both
Commons at Grant	398 S. Grant St.	Columbus	Central	Franklin	43212	614/224-2988	Any	Yes/Any	No	Subsidy
Hotel St. Clair - a CHN property	340 St. Clair Avenue	Columbus	Central	Franklin	43203	614/258-1200	55	Yes/55	No	Subsidy
Jaycee Arms	266 East Main Street	Columbus	Central	Franklin	43215	614/228-1201	62	Yes/Any	No	Subsidy
Jenkins Terrace (CMHA)	1100 E. Broad Street	Columbus	Central	Franklin	43215	614/421-6373	62	Yes/18	No	Both
Michigan School Victorian Village	1200 Michigan Avenue	Columbus	Central	Franklin	43201	614/253-0984	62	Yes/Any	No	Subsidy
Mt. Vernon Plaza I	1035 Atcheson Street	Columbus	Central	Franklin	43203	614/253-8627	62	Yes/62	No	Subsidy
Nazareth Towers	300 East Rich Street	Columbus	Central	Franklin	43215	614/464-4780	55	Yes/55	No	Subsidy
Park Place	76-84 S. 20th Street	Columbus	Central	Franklin	43205	614/224-3315	62	Yes/21	Yes	Subsidy
Victorian Heritage	1379 N. High Street	Columbus	Central	Franklin	43201	614/224-3315	62	Yes/21	No	Subsidy
YWCA Housing	40 West Long Street	Columbus	Central	Franklin	43215	614/224-9121	18	Yes/18	No	Both
Bryden House	1555 Bryden Road	Columbus	Central	Franklin	43205	614/253-6097	55	Yes/55	No	Neither
Sunshine Terrace and Annex	272 South Gift	Columbus	Central	Franklin	43215	614/228-4849	62	Yes/Any	No	Subsidy
Uptown Village	45-64 East 5th Avenue	Columbus	Central	Franklin	43201	614/298-8188	62	Yes/Any	No	Subsidy
			EAST	FRANKLIN						
Chandler Arms I & II	305 North Gould Rd	Columbus	East	Franklin	43209	614/231-0305	62	Yes/55	No	Subsidy
Alliance Apartments	840 Berkeley Road	Columbus	East	Franklin	43205	6214/224-3315	62	Yes/22	Yes	Subsidy
Angus Court	3400 Vision Center Ct.	Columbus	East	Franklin	43227	614/236-5661	62	Yes/Any	No	Subsidy
Angus Green	3400 Vision Center Ct.	Columbus	East	Franklin	43227	614/236-5661	62	Yes/Any	No	Tax Credit
Barnett Plaza	1400 Barnett Road	Columbus	East	Franklin	43227	614/235-4320	62	Yes/62	No	Tax Credit
Bexley Heritage Apartments	2115 Astor Ave.	Bexley	East	Franklin	43209	614/338-2380	62	No	No	Subsidy
Castleton Gardens Ltd.	1620 Lonsdale Road	Columbus	East	Franklin	43232	614/863-6478	62	Yes/Any	No	Subsidy
Chestnut Grove	831 Acorn Grove Drive	Blacklick	East	Franklin	43004	614/577-9641	55	No	No	Subsidy
Chestnut House	771 Chestnut Grove Drive	Blacklick	East	Franklin	43004	614/577-8638	62	Yes/62	No	Subsidy
Commons at Chantry	55000 Millersfield Drive	Columbus	East	Franklin	43232	614/863-9772	Any	No	Yes	Tax Credit
Commons at Livingston	3349 E. Livingston Avenue	Columbus	East	Franklin	43227	614/235-4426	Any	Yes/Any	No	Subsidy
Eastland Manor, Inc.	4225 Macsway Avenue	Columbus	East	Franklin	43232	614/861-6146	62	No	No	Subsidy
Eastway Village Apartments	4221 E. Broad St.	Whitehall	East	Franklin	43213	614/437-2532	55	N/A	No	Tax Credit
Elim Manor Senior Village	3180 Elim Manor Court	Columbus	East	Franklin	43232	614/863-7666	62	Yes/62	Yes	Both
Grand Haven Commons	7500 Tussing Road	Reynoldsbur	East	Franklin	43147	614/322-9290	62	No	No	Subsidy
Hampton Woods	2819 E. Dublin Granville Road	Columbus	East	Franklin	43231	614/899-8000	55	Yes/55	No	Neither
Heritage Tower	1145 College Avenue	Columbus	East	Franklin	43209	614/231-4900	62	N/A	No	Subsidy
Maplewood Heights (CMHA)	91 Maplewood Avenue	Columbus	East	Franklin	43213	614/421-6355	62	Yes/18	No	Subsidy
Nelson Park Apartments	1994 Maryland Avenue	Columbus	East	Franklin	43219	614/258-4053	62	Yes/59	Yes	Subsidy
Ottawa Ridge Village	1155 Noe Bixby Road	Columbus	East	Franklin	43213	614/861-9908	62	N/A	No	Tax Credit
Robert Cassidy Village	1370 Barnett Road	Columbus	East	Franklin	43227	614/231-9949	62	Yes/Any	No	Subsidy
Seton Square East	1235 Briarcliff Road	Reynoldsburg	East	Franklin	43068	614/861-4860	62	Yes	No	Both
Sterling Court	3190 Sterling Lane	Columbus	East	Franklin	43219	614/237-4694	Any	Yes/Any	Yes	Subsidy

Key for Terms:
 SEN=Senior
 PWD=Person with a Disability
 FAM=Family Housing
 N/A=No Answer Given

APARTMENT LIST FOR CENTRAL OHIO, SEPTEMBER, 2014

FacilityName	Address	City	Area	County	Zip	Phone	Sen/Age?	PWD/Age?	FAM?	Subsidy/ Tax Credit?
The Woods on Country Club Road	851 Country Club Road	Whitehall	East	Franklin	43213	614/501-0496	55	No	No	Tax Credit
Village at Ottawa Ridge	1155 Noe Bixby Road	Columbus	East	Franklin	43213	614/643-9017	62	Yes/62	No	Both
Walnut Grove	751 Chestnut Grove Drive	Blacklick	East	Franklin	43004	614/868-0605	Any	Yes/Any	Yes	Both
			NORTH	FRANKLIN						
Capital Park Apartments	2144 Agler Road	Columbus	North	Franklin	43224	614/471-1204	Any	Yes/Any	Yes	Both
Carriage House of Columbus	3535 Derbyshire Drive	Columbus	North	Franklin	43224	614/267-6942	Any	Yes/Any	Yes	Subsidy
Creative Living Center II	150 W. 10th Ave.	Columbus	North	Franklin	43201	614/421-2183	No	Yes/18	No	Subsidy
InCare Suites	5861 Roche Drive	Columbus	North	Franklin	43229	614/421-6374	62	No	No	Neither
Jaycee Village Apartments	5905 Beechcroft Road	Columbus	North	Franklin	43229	614/890-6711	62	Yes/18	No	Subsidy
Lincoln Manor	3788 Cleveland Ave.	Columbus	North	Franklin	43224	614/475-4933	55	N/A	No	Subsidy
Melbourne Village	90 Highland Terrace	Worthington	North	Franklin	43085	614/888-1413	62	N/A	No	Neither
North Central Village	2200 Foundation Drive	Columbus	North	Franklin	43211	614/262-5257	62	Yes/55	No	Tax Credit
North Community Place	120 Morse Road	Columbus	North	Franklin	43214	614/842-2025	62	Yes/62	No	Subsidy
Restoration Plaza I & II	4800 Tamarack Blvd	Columbus	North	Franklin	43229	614/848-9799	62	Yes/Any	No	Subsidy
Restoration Plaza III	4800 Tamarack Blvd	Columbus	North	Franklin	43229	614/846-0040	62	No	No	Subsidy
Stafford Court	49 East North Street	Worthington	North	Franklin	43085	614/846-2648	55	Yes/Any	No	Neither
Stafford Village	814 Hartford	Worthington	North	Franklin	43085	614/846-2648	62	No	No	Subsidy
			N. EAST	FRANKLIN						
Arthur Alvin Zebbs Park	1870 Artane Place	Columbus	N. East	Franklin	43219	614/263-5152	55	Yes/55	No	Tax Credit
Beckley Townhouses	4725 Bayview Place	Columbus	N. East	Franklin	43230	614/475-5182	62	Yes/Any	Yes	Subsidy
Columbus Colony Housing Inc.	1165 Colony Drive	Westerville	N. East	Franklin	43081	614/890-6152	62	Yes/Any	No	Subsidy
Columbus Colony II	1105 Colony Drive	Westerville	N. East	Franklin	43081	614/890-6152	62	Yes/Any	No	Subsidy
Corban Commons	3426 Corban Commons Dr.	Columbus	N. East	Franklin	43219	614/337-1577	62	Yes/62	No	Tax Credit
Crossroads Plaza and Apartments	2943 Cassidy Court South	Columbus	N. East	Franklin	43219	614/475-5671	Any	Yes/Any	Yes	Both
Friends/VVA Apartments	1992 Denune St.	Columbus	N. East	Franklin	43211	614/228-6700	62	Yes/Any	No	Subsidy
Harris Askins House	200 South State Street	Westerville	N. East	Franklin	43081	614/899-1997	62	No	No	Subsidy
Ivywood Apartments	2350 Teakwood Drive	Columbus	N. East	Franklin	43229	614/891-6264	Any	Yes/Any	Yes	Subsidy
New Salem Manor	2760 Sunbury Road	Columbus	N. East	Franklin	43219	614/337-2190	62	Yes/Any	No	Subsidy
Ravine at Central College I and II	610 Sunbury Road	Westerville	N. East	Franklin	43219	614-794-1333	55	Yes/55	No	Both
Seniors at Hegemon	2399 Mock Road	Columbus	N. East	Franklin	43219	614/337-2463	62	Yes/Any	No	Subsidy
Stygler Commons	165 Stygler Road	Gahanna	N. East	Franklin	43230	614/475-0552	62	Yes/Any	No	Subsidy
Stygler Village	140 Imperial Drive	Gahanna	N. East	Franklin	43230	614/475-2255	62	Yes/Any	Yes	Both
Sugar Grove Square Apartments	530 South State Street	Westerville	N. East	Franklin	43081	614/882-7757	62	Yes/Any	No	Neither
The Woods at Central College	700 East Street	Westerville	N. East	Franklin	43081	614/895-0959	62	Yes/Any	No	Subsidy
Woods at Central College	700 East Street	Westerville	N. East	Franklin	43081	614/895-0959	62	Yes/Any	No	Subsidy
			N. WEST	FRANKLIN						
Commons at Third	1280 Norton Avenue	Columbus	N. West	Franklin	43212	614/484-0789	18	N/A	No	Tax Credit
Love Zion Manor	2436 Innis Road	Columbus	N. West	Franklin	43224	614/476-3833	62	Yes/Any	No	Subsidy
Seaton Square North	1776 Drew Avenue	Columbus	N. West	Franklin	43235	614/451-1995	62	Yes/Any	No	Subsidy
St. George On The Commons	4800 Knightbridge Blvd.	Columbus	N. West	Franklin	43214	614/451-1479	62	No	No	Subsidy
Sturbridge Green	3750 Sturbridge Court	Hilliard	N. West	Franklin	43026	614/876-0192	62	Yes/Any	No	Subsidy
Wellington Village	5863 Scuto Darby Creek	Hilliard	N. West	Franklin	43026	614/777-8553	55	Yes/55	No	Tax Credit
Woodview Court	3623 Heritage Club Drive	Hilliard	N. West	Franklin	43026	614/527-0662	62	Yes/Any	No	Subsidy
Avondale Senior Village	5215 Avery Rd.	Dublin	N. West	Franklin	43016	614/319-3353	62	Yes/55	No	Tax Credit

Key for Terms:
 SEN=Senior
 PWD=Person with a Disability
 FAM=Family Housing
 N/A=No Answer Given

APARTMENT LIST FOR CENTRAL OHIO, SEPTEMBER, 2014

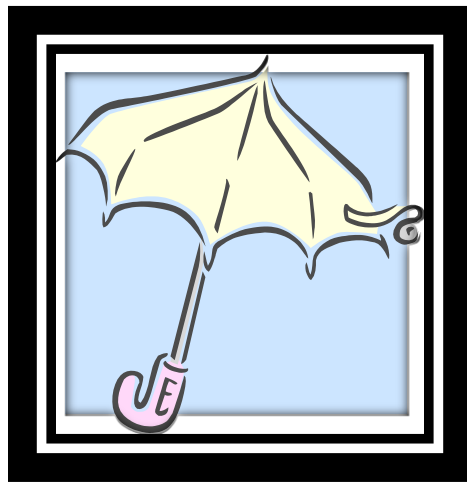
FacilityName	Address	City	Area	County	Zip	Phone	Sen/Age?	PWD/Age?	FAM?	Subsidy/ Tax Credit?
Marion Square (CMHA)	1316 Marion Road	Columbus	SOUTH	FRANKLIN						
Seton South	155 Highview Blvd	Columbus	South	Franklin	43207	614/421-6345	62	Yes/18	No	Subsidy
Southfield Tabernacle Commons	300 Obetz Road	Columbus	South	Franklin	43207	614/492-9944	62	N/A	No	Subsidy
			S. EAST	FRANKLIN					No	Subsidy
Berwick Grove	3240 Tradan Drive	Columbus	S. East	Franklin	43232	614/239-8560	62	Yes/Any	Yes	Both
Canal Village	85 Covenant Way	Canal Winch	S. East	Franklin	43110	614/837-2008	62	Yes/62	No	Subsidy
David's Way	73 Covenant Way	Canal Winch	S. East	Franklin	43110	614-837-2008	62	N/A	No	Subsidy
Fieldstone Court	2850 Alum Creek Drive	Columbus	S. East	Franklin	43207	614/445-0221	62	Yes/55	No	Tax Credit
Greenfield Place	283 Green Avenue	Groveport	S. East	Franklin	43125	614/836-5867	62	Yes/62	No	Subsidy
Stratford II East	3401 Quinlan Blvd.	Canal Winch	S. East	Franklin	43110	614/834-5278	62	Yes/Any	No	Tax Credit
Waterford Place Housing	5311 Duskywing Drive	Canal Winch	S. East	Franklin	43110	614/829-7622	55	Yes/55	No	Tax Credit
			S. WEST	FRANKLIN						
Bending Hollow Apartments	2584 Augustus Court	Urban Crest	S. West	Franklin	43123	614/875-8482	62	55	No	Both
Griggs Village	721 Griggs Avenue	Columbus	S. West	Franklin	43223	614/221-0443	18	N/A	Yes	Subsidy
Groewood Place	4301 Stoner Drive	Grove City	S. West	Franklin	43123	614/539-1022	62	No	No	Subsidy
Lamplighter Senior Village	1185 Lamplighter Drive	Grove City	S. West	Franklin	43126	740/ 772-1396	55	N/A	No	Tax Credit
Melanie Manor	2346 Sonora Drive	Grove City	S. West	Franklin	43123	614/871-4509	62	Yes/18	No	Subsidy
Seton West	3999 Clime Road	Columbus	S. West	Franklin	43228	614/274-8550	62	Yes/62	No	Subsidy
Southpark Apartments	841 Greenfield Drive	Columbus	S. West	Franklin	43223	614/221-9016			Yes	Subsidy
			WEST	FRANKLIN						
Cherry Blossom Apartments	5225 Cherry Creek Pkwy N	Columbus	West	Franklin	43228	614/853-2315	62	No	No	Subsidy
Franklin Manor Apartments	1475 Stimmel Road	Columbus	West	Franklin	43228	614/276-7118	Any	Yes/Any	Yes	Subsidy
Hawthorne Village	750 W. Rich Street	Columbus	West	Franklin	43222	614/227-0547	55	Yes/55	No	Both
Hilltop Senior Village I & II	300 Overstreet Way	Columbus	West	Franklin	43228	614/276-3017	55	N/A	No	Both
Horizons of Hilliard	3940 Moundview Road	Hilliard	West	Franklin	43026	614/876-1919	62	N/A	No	Neither
Lincoln Gardens	108 Sturbridge Road	Columbus	West	Franklin	43228	614/878-4394	62	Yes/55	No	Both
Murray Commons	4785 Beacon Hill Road	Columbus	West	Franklin	43228	614/870-6232	62	Yes/50	No	Subsidy
Stratford Place	383 Inah Avenue	Columbus	West	Franklin	43228	614/878-7257	62	Yes/Any	No	Subsidy
Village Place	1489 October Ridge Ct.	Columbus	West	Franklin	43223	614/275-9850	62	Yes/62	No	Subsidy
Wedgewood Park	777 Wedgewood Drive	Columbus	West	Franklin	43228	614/272-2800	Any	Yes/Any	Yes	Subsidy
Willow Bend	1531 Whispering Willow Lane	Hilliard	West	Franklin	43026	614/529-8300	Any	Yes/Any	Yes	Tax Credit
Woodridge Place	3565 Clime Road	Columbus	West	Franklin	43228	614/272-8960	Any	Yes/Any	Yes	Subsidy
Worley Terrace (CMHA)	99 South Central Avenue	Columbus	West	Franklin	43222	614/279-7012	62	Yes/18	No	Subsidy
			VARIOUS	FRANKLIN						
Beacon Apartments	Various	Columbus	Various	Franklin	Various	614/228-6700	65	No	No	Subsidy
Community Properties of Ohio	Numerous	Columbus	Various	Franklin	Various	614/253-0984	Any	Yes/Any	Yes	Subsidy
Oakwood Apartments (numerous loc	Various	Columbus	Various	Franklin	Various	614/224-3315	62	Yes/21	Yes	Subsidy

Key for Terms:
 SEN=Senior
 PWD=Person with a Disability
 FAM=Family Housing
 N/A=No Answer Given

APARTMENT LIST FOR CENTRAL OHIO, SEPTEMBER, 2014

<u>FacilityName</u>	<u>Address</u>	<u>City</u>	<u>County</u>	<u>Zip</u>	<u>Phone</u>	<u>Sen/Age?</u>	<u>PWD/Age?</u>	<u>FAM?</u>	<u>Subsidy/Tax Credit?</u>	
			LICKING							
Applewood Village Apartments	623 Glenbrook Drive	Newark	Licking	43055	740/366-3135	62	N/A	No	Subsidy	
Avalon Apartments	86 W. Main St.	Newark	Licking	43055	740/345-2544	55	Yes/55	No	Tax Credit	
Blue Heron Manor	2 & 4 Mallard Way	Newark	Licking	43055	740/345-2544	55	Yes/55	No	Neither	
Candlewick Commons	15 S. Third St.	Buckeye Lak	Licking	43055	740/349-0636	62	N/A	No	Subsidy	
Chines Terrace	65 South Williams Street	Johnstown	Licking	43031	740/967-0707	62	Yes/Any	No	Subsidy	
Concord Apartments	41 North 40th Street	Newark	Licking	43055	740/522-6311	Any	Yes/Any	Yes	Both	
Crossroads Manor	1153 6th Street	Hebron	Licking	43025	740/345-2544	55	Yes/55	No	Tax Credit	
Licking Metropolitan Housing Author	85 West Church Street	Newark	Licking	43055	740/349-8069	62	N/A	No	Subsidy	
Mitchell Retirement Village I and II	1030 S. 30th Street	Heath	Licking	43056	740-522-2830	62	Yes/18	No	Subsidy	
Oakhill Manor	1 Cross St.	Utica	Licking	43080	740-892-2353	62	Yes/Any	No	Subsidy	
NCR of Weingert Rd	771 Chesnut Grove Drive	Blacklick	Licking	43004	614-451-2151	62	N/A	No	Subsidy	
Pataskala Green Apartments	119 Coronado Drive	Pataskala	Licking	43062	740/927-1126	62	N/A	No	Subsidy	
Rendy Murray Commons	400 Washington Street	Newark	Licking	43055	740-670-8576	62	Yes/Any	No	Subsidy	
Sharon Glyn	914 Sharon Glyn Village	Newark	Licking	43055	740/366-8797	62	N/A	No	Neither	
Washington Plaza	340 Eastern Ave.	Newark	Licking	43055	740-349-8353	62	Yes/Any	No	Subsidy	
Westgate Village Apartments	15 North Mound Street	Frazeyburg	Licking	43822	740/828-2170	62	Yes/Any	No	Subsidy	
FacilityName	Address	City	County	Zip	Phone	Sen/Age?	PWD/Age?	FAM?	Subsidy/Tax Credit?	
			MADISON							
Bristol Square	1111 Bristol Square	West Jeffers	Madison	43162	614/879-9200	62	Yes/Any	No	Subsidy	
Devonshire West	89 101 Twin Street	West Jeffers	Madison	43162	614/879-4187	60	N/A	No	Subsidy	
Londonerry Apartments	267 Bowman Rd.	London	Madison	43140	740/852-2721	Any	Yes/Any	Yes	Subsidy	
Madison Square Apartments	445 Fairfield Drive	Plain City	Madison	43264	740/873-3533	Any	Yes/Any	Yes	Subsidy	
Meadowview Village	338 West Main Street	Mt. Sterling	Madison	43143	740/869-2813	62	Yes/21	Yes	Both	
Pleasant Valley Commons & Garden	390 Allgyer Drive	Plain City	Madison	43064	614-873-8119	62	Yes/18	No	Both	
Seton London	350 Cambridge Drive	London	Madison	43140	740-852-4233	62	N/A	No	Subsidy	
FacilityName	Address	City	County	Zip	Phone	Sen/Age?	PWD/Age?	FAM?	Subsidy/Tax Credit?	
			PICKAWAY							
Eden Place	1175 Atwater Avenue	Circleville	Pickaway	43113	740/477-2514	62	Yes/Any	No	Subsidy	
Holland Terrace and Ross Commons	293 South Main Street	New Holland	Pickaway	43145	740/495-5811	Any	Yes/Any	Yes	Subsidy	
Louise Terrace	270 Lexington Ave	Ashville	Pickaway	43103	740-983-2912	62	Yes/Any	No	Subsidy	
Pickaway Terrace Retirement Village	2065 Chickasaw Drive	Circleville	Pickaway	43113	740/474-8700	62	Yes/Any	No	Subsidy	
Rustic Ridge	176 Rustic Drive	Circleville	Pickaway	43113	740/477-2514	Any	Yes/Any	Yes	Subsidy	
Williamsport Terrace	South Water Street	Williamsport	Pickaway	43164	740/466-2514	Any	Yes/Any	Yes	Subsidy	
FacilityName	Address	City	County	Zip	Phone	Sen/Age	PWD/Age?	FAM?	Subsidy/Tax Credit?	
			UNION							
Helen Evans Apartments	821 Milcrest Drive	Marysville	Union	43040	937-644-1829	62	Yes/62	No	Subsidy	
Richwood Greens	602 Forest Lane	Richwood	Union	43344	740/943-2332	Any	Yes/Any	Yes	Subsidy	
Windsor Manor	376 Rosehill Drive	Marysville	Union	43040	937/644-2905	62	Yes/18	No	Subsidy	

Central Ohio List of Homeless Shelters



Homeless Shelters in Central Ohio

Delaware County

Faith Promise Family Shelter
Delaware, OH, 740-362-7817
Serves families

Fairfield County

Fairfield County Emergency Shelter
Faith Housing of Fairfield County
1681 E. Main St.
Lancaster OH 43130-5266, 740-653-2012
Serves adult females and males

The Foundation Shelter
800 W. Sixth Avenue
Lancaster, Ohio 43130, 740-653-1960 (night)
740-503-2381 (day)
Serves men, women and women with children

Lancaster-Fairfield County Community Action (CA)
Emergency Homeless Shelter
1743 East Main Street
Lancaster, OH 43130, 740-653-4146
Serves eligible homeless families with children only-no single adults.

Fayette County

Community Action Commission of Fayette County
320 Hinde Street
Washington Court House, Ohio 43160, 740-333-7580
Serves families including single women, children, couples with children, and single parent families.

Franklin County

There are a number of shelters in Franklin County for men, women and families.

Referrals for single adults are made through HandsOn Central Ohio at 888-474-3587.

Referrals for family shelters can be obtained by calling 211.

Licking County

St. Vincent DePaul Haven
135 Wilson St.
Newark, OH 43055, 740-670-0822
Serves men.

Salvation Army of Licking County
250 East Main Street
Newark, OH 43058, 740-345-8120
Serves men, women and families.

Madison County

Madison County Emergency Shelter
1038 Rt. 38, London, OH, Call 740-852-3511 for a referral.

Pickaway County

Circle of Light Emergency Shelter
2146 North court Street
Circleville OH 43113, 614-980-5788, www.thecircleshelter.org

Union County

None

Central Ohio List of Adult Care Facilities

Organized Alphabetically by County

**For more detailed information,
visit either www.mha.ohio.gov
Or call Ohio Dept. of Mental
Health at (614) 466-1590 or
www.ltc.ohio.gov.**

Note: Every reasonable effort is taken to ensure accurate information. However we cannot guarantee completeness or timeliness of information. Some of the names, addresses or phone numbers of the facilities may have changed since the printing of this manual. List updated September 2014.

Central Ohio Adult Care Facilities List

Delaware County

Ashley Manor Assisted Living
Adult Group Home (6-16 Residents)
445 Ashley Road Ashley OH 43003
(740) 747-3229

Galena Manor Assisted Living
Adult Family Home (3-5 Residents)
8160 Dustin Road Galena OH 43021
740-936-5212

The Mitchell House of Powell
Adult Family Home (3-5 Residents)
53 Sharp Street Powell OH 43065
(614)506-2890

Fayette County

Currently no licensed facilities.

Fairfield County

Dalan House Adult Group Home
Adult Group Home(6-16 Residents)
1519 East Main Street Lancaster OH 43130
740-536-7981

Good Shepherd Adult Care
Adult Group Home(6-16 Residents)
619 County Line Road Bremen OH 43107
(740) 569-7243

Kathy's Kare Haven
Adult Family Home (3-5 Residents)
5715 Westfall Road, SW Lancaster OH 43130
(740) 969-2923

McCafferty Adult Care Facility
Adult Family Home(3-5 Residents)
106 Pearl Street Pleasantville OH 43148
(740)468-3404

McCafferty Adult Care Facility
Adult Family Home (3-5 Residents)
106 Pearl Street Pleasantville OH 43148
(740) 468-3404

Scott's Place
Adult Family Home (3-5 Residents)
504 Overlook Drive Lancaster OH 43130
(740) 407-2154

Stimmell Board And Care
Adult Family Home (3-5 Residents)
936 N. Columbus Street Lancaster OH 43130
(740) 687-0542

Stimmell Elderly Care
Adult Family Home(3-5 Residents)
936 North Columbus Street (Rear)
Lancaster OH 43130
(740) 687-0542

Franklin County

A Blessed Business Of Family Homes
Adult Family Home (3-5 Residents)
1717 Milford Ave Columbus OH 43224
(614) 297-6733

A Blessed Business of Family Homes II
Adult Family Home (3-5 Residents)
1848 East N. Broadway Columbus OH 43224
614-725-2222

A Hamishe Home Assisted Living
Adult Family Home (3-5 Residents)
2346 Brookwood Road Columbus OH 43209
(614) 725-5996

Avery House
Adult Family Home (3-5 Residents)
5544 Avery Road Dublin OH 43016
(614) 467-9092

Blanton Health Care
Adult Family Home (3-5 Residents)
3040 Longridge Way Grove City OH 43123
(614) 871-3531

Blanton House
Adult Family Home (3-5 Residents)
3083 Sawyer Drive Grove City OH 43123
(614) 871-3531

Blanton House At Meadow Grove Estates
Adult Family Home (3-5 Residents)
1944 Mallow Lane Grove City OH 43123
(614) 871-3531

Burton's Adult Family Home
Adult Family Home (3-5 Residents)
3921 Parsons Avenue Columbus OH 43207
(614) 497-0664

Christian Hands, LLC
Adult Family Home (3-5 Residents)
924 Linwood Avenue Columbus OH 43206
(614) 874-6637

Comfortable Housing, Inc.
Adult Family Home (3-5 Residents)
6268 Brauning Drive Reynoldsburg OH 43068
(614) 604-9171

Crandall House
Adult Family Home (3-5 Residents)
146 Crandall Drive Worthington OH 43085
(614) 396-6279

Eason House
Adult Family Home (3-5 Residents)
5249 Rush Avenue Columbus OH 43214
614-396-6194

Esther's Place
Adult Family Home (3-5 Residents)
5550 Sinclair Rd Columbus OH 43229
(614) 436-5333

Mentor ABI, LLC
Adult Family Home (3-5 Residents)
6800 Sunbury Road Westerville OH 43081
(614) 774-5400

Mildred's Manor
Adult Family Home (3-5 Residents)
5331 Torchwood Loop East
Columbus OH 43229
(614) 505-0221

My Brother's Other Place
Adult Family Home (3-5 Residents)
3016 Weirton Drive Columbus OH 43207
(614) 295-8911

My Brother's Place
Adult Family Home (3-5 Residents)
2555 Red Rock Blvd. Grove City OH 43123
(614) 332-6403

My Friends Place in Unity
Adult Family Home (3-5 Residents)
714 Miller Avenue Columbus OH 43205
614-253-2393

Franklin County

Our Family Home
Adult Family Home (3-5 Residents)
6535 Evening Street Worthington OH 43085
(614) 558-1828

Our Family Home
Adult Family Home (3-5 Residents)
5006 Johnstown Rd New Albany OH 43054
(614) 558-1828

Our Family Home #4
Adult Family Home (3-5 Residents)
6207 Olentangy River Road Worthington OH 43085
614-558-1828

Our Family Home - HARLEM
Adult Family Home (3-5 Residents)
6227 Harlem Road New Albany OH 43054
(614) 558-1828

Our Family Home - Longview
Adult Family Home (3-5 Residents)
50 Longview Drive Dublin OH 43017
(614) 553-7760

Our Family Home - TONTI
Adult Family Home (3-5 Residents)
3741 Tonti Drive Dublin OH 43016
(614)558-1828

Our Family Home, Inc
Adult Family Home (3-5 Residents)
6620 Worthington-Galena Rd Worthington OH 43085
(614) 558-1828

Perfect Life Choices, LLC
Adult Family Home (3-5 Residents)
1337 Manor Drive Columbus OH 43232
(614) 367-1031

Pete's Place
Adult Family Home (3-5 Residents)
243 Sinsbury Drive, North Worthington OH 43085
(614) 554-7697

Powell House
Adult Family Home (3-5 Residents)
2322 Sunbury Road Columbus OH 43219
(614) 476-8579

Powell House II
Adult Family Home (3-5 Residents)
1643 Marina Drive Columbus OH 43219
(614) 230-2336

Reach Out A Hand
Adult Family Home (3-5 Residents)
4792 Northtowne Blvd Columbus OH 43229
(614) 428-5779

Reach Out a Hand II
Adult Family Home (3-5 Residents)
202 East Jenkins Avenue Columbus OH 43207
(614)449-6383

Rosencrance Adult Foster Home
Adult Family Home (3-5 Residents)
3799 Hines Road Gahanna OH 43230
(614) 269-7048

Senior Home Choice I
Adult Family Home (3-5 Residents)
6394 Roselawn Avenue Reynoldsburg OH 43068
(614) 655-2017

Senior Home Choice II
Adult Family Home (3-5 Residents)
6397 Roselawn Ave Reynoldsburg OH 43068
(614) 604-8623

Serenity House Assisted Living
Adult Family Home (3-5 Residents)
1939 Mallow Lane Grove City OH 43123
(614) 871-8966

The Jessie Mae Home
Adult Family Home (3-5 Residents)
3476 Fishinger Road Columbus OH 43221
(614)219-7018

Franklin County

TMC Helping Hands Home I
Adult Family Home (3-5 Residents)
5 73 North Everett Avenue Columbus OH 43213
(614)338-0207

TMC Helping Hands Home II
Adult Family Home (3-5 Residents)
3048 Southfield Drive Columbus OH 43207
(614) 477-2243

TMC Helping Hands III
Adult Family Home (3-5 Residents)
1269 Grovewood Drive Columbus OH 43207
614-295-8626

Madison County

Adams Home of Tranquility
Adult Family Home (3-5 Residents)
750 Taylor Blair Road West
Jefferson, OH 43162, (614)879-8139

Mt. Sterling Place
Adult Group Home (6-16 Residents)
160 W. Main Street, Mount Sterling, OH 43143
(740)869-7669

Sisters Elderly Life
Adult Group Home (6-16 Residents)
16 North Main Street, London OH 43140
(740)852-3988

Sisters On Elm
Adult Group Home (6-16 Residents)
76 Elm Street London OH 43140
(740) 852-0605

Union County

Serendipity Place
Adult Foster Home (1-2 Residents)
16081 Snyder Road Richwood OH 43344
(740) 943-2257

Licking County

Altmaier House
Adult Group Home (6-16 Residents)
61 Granville Street Newark OH 43055
(740) 788-0375

River Valley Apartments
Adult Group Home (6-16 Residents)
837 East Main Street Newark OH 43055
(740) 349-3071

Wolfe Foster Home
Adult Family Home (3-5 Residents)
1100 Thornwood Drive, Unit 1025
Heath OH 43056 , (740)281-0004

Wolfe Foster Home
Adult Foster Home (1-2 Residents)
1100 Thornwood Drive #1025
Heath OH 43056, (614) 589-9771

Pickaway County

Howard's Care Home
Adult Group Home (6-16 Residents)
906 South Court Street Circleville OH 43113
(740) 477-1806

Lemaster's Adult Foster Home
Adult Foster Home (1-2 Residents)
110 Logan Elm Blvd. Circleville OH 43113
(740) 601-4249

Maze Residential Care Home
Adult Group Home (6-16 Residents)
416 Cedar Heights Road Circleville OH 43113
(740) 474-4158

The Caring Touch of Ohio
Adult Group Home (6-16 Residents)
11274 Route 23 Lockbourne OH 43137
(740) 983-6542

We Care Court
Adult Family Home (3-5 Residents)
5300 Hagerty Road Ashville OH 43103
(740) 474-3440

Central Ohio List of Assisted Living & Skilled Nursing Facilities

Organized Alphabetically by County

For more detailed information,
visit www.ltc.ohio.gov.

Note: Every reasonable effort is taken to ensure accurate information. However we cannot guarantee completeness or timeliness of information. Some of the names, addresses or phone numbers of the facilities may have changed since the printing of this manual. List updated September 2014.

SKILLED NURSING FACILITIES-DELAWARE CO

ARBORS AT DELAWARE
2270 WARRENSBURG RD
DELAWARE, OH 43015
(740) 369-9614 117 BEDS

CHERITH CARE CENTER AT WILLOW BROOK
100 WILLOW BROOK WAY, SOUTH
DELAWARE, OH 43015
(740) 369-0048 34 BEDS

COUNTRY VIEW OF SUNBURY
14961 NORTH OLD 3C HIGHWAY
SUNBURY, OH 43074
(740) 965-3984 136 BEDS

DELAWARE COURT HEALTHCARE CENTER
4 NEW MARKET DRIVE
DELAWARE, OH 43015
(740) 369-6400 75 BEDS

SARAH MOORE HEALTH CARE CENTER
26 N. UNION STREET
DELAWARE, OH 43015
(740) 362-9641 32 BEDS

WINTERSONG VILLAGE OF DELAWARE
478 SOUTH SANDUSKY STREET
DELAWARE, OH 43015
(740) 369-8741 50 BEDS

ASSISTED LIVING FACILITIES-DELAWARE CO.

ABBINGTON OF POWELL
3971 BRADFORD COURT
DELAWARE, OH 43015
(740) 369-0048 54 BEDS

CENTRUM AT WILLOW BROOK
100 WILLOW BROOK WAY SOUTH
DELAWARE, OH 43015
(740) 369-6400 133 BEDS

DELAWARE COURT HEALTHCARE
4 NEW MARKET DRIVE
WESTERVILLE, OH 43082
(614) 898-7488 25 BEDS

FERIDEAN COMMONS
6885 FREEMAN ROAD
DELAWARE, OH 43015
(740) 417-9287 66 BEDS

INN AT OLENTANGY TRAIL
36 CORDUROY ROAD
WESTERVILLE, OH 43082
(330) 487-8686 120 BEDS

PARKSIDE VILLAGE
730 NORTH SPRING
DELAWARE, OH 43015
(740) 362-9641 150 BEDS

SARAH MOORE HEALTH CARE CENTER, INC
26 N UNION STREET
DELAWARE, OH 43015
(740) 362-9641 44 BEDS

SARAH MOORE HOME
47 E. WILLIAM STREET
DELAWARE, OH 43015
(740) 201-5640 21 BEDS

WILLOW BROOK AT DELAWARE RUN
100 DELAWARE CROSSING WEST
DELAWARE, OH 43015
(740) 201-5640 228 BEDS

SKILLED NURSING FACILITIES-FAIRFIELD CO.

CRESTVIEW MANOR NURSING HOME
957 BECKS KNOB ROAD
LANCASTER, OH 43130
(740) 654-2634 195 BEDS

ECHO MANOR EXTENDED CARE CTR.
10270 BLACKLICK EASTERN RD, NW
PICKERINGTON, OH 43147
(614) 864-1718 89 BEDS

HEARTLAND-FAIRFIELD
7820 PLEASANTVILLE ROAD
PLEASANTVILLE, OH 43148
(740) 536-7381 150 BEDS

HOMESTEAD CENTER
1900 EAST MAIN STREET
LANCASTER, OH 43130
(740) 653-8630 102 BEDS

KINDRED TRANSITIONAL CARE & REHAB-
PICKERINGTON
1300 HILL ROAD NORTH
PICKERINGTON, OH 43147
(614) 863-1858 96 BEDS

LANFAIR CENTER FOR REHAB & NURSING CARE
1590 CHARTWELL STREET
LANCASTER, OH 43130
(740) 687-5100 84 BEDS

MAIN STREET TERRACE CARE CENTER
1318 EAST MAIN STREET
LANCASTER, OH 43130
(740) 653-8767 50 BEDS

ROCKMILL REHABILITATION CENTRE
3680 DOLSON COURT
CARROLL, OH 43112
(704) 654-1641 100 BEDS

ASSISTED LIVING FACILITIES--FAIRFIELD CO.

ABBINGTON OF PICKERINGTON
9480 BLACKLICK-EASTERN ROAD
PICKERINGTON, OH 43147
(614) 577-0822 195 BEDS

AMBER PARK ASSISTED LIVING
401 HILL ROAD NORTH
PICKERINGTON, OH 43147
(614) 834-3113 89 BEDS

CARRIAGE COURT ASSISTED LIVING
800 BECKS KNOB ROAD
LANCASTER, OH 43130
(740) 654-4422 150 BEDS

THEINN AT FAIRFIELD VILLAGE
1834 COUNTRY SIDE DRIVE
LANCASTER, OH 43130
(740) 689-9944 102 BEDS

PRIMROSE RETIREMENT COMMUNITIES
1481 WESLEY WAY
LANCASTER, OH 43130
(740) 653-3900 96 BEDS

REFLECTIONS RETIREMENT COMMUNITY
2750 WEST FAIR AVENUE
LANCASTER, OH 43130
(740) 653-1423 84 BEDS

THE SPRINGS AT CARROLL
3682 DOLSON COURT, NW
CARROLL, OH 43112
(740) 654-4529 50 BEDS

STERLING HOUSE OF LANCASTER
241 WHITTIER DRIVE SOUTH
LANCASTER, OH 43130
(740) 681-9903 100 BEDS

SKILLED NURSING FACILITIES--FAYETTE CO

COURT HOUSE MANOR
555 NORTH GLENN AVENUE
WASHINGTON CH, OH 43160
(740) 335-6391 100 BEDS

HILLCREST MANOR
6674 STAFFORD ROAD
WASHINGTON CH, OH 43160
(740) 335-6323 25 BEDS

MANOR AT WASHINGTON COURT HOUSE
726 RAWLINGS STREET
WASHINGTON COURT HOUSE, OH 43160
(740) 335-7143 125 BEDS

SIGNATURE HEALTHCARE OF FAYETTE COUNTY
375 GLENN AVENUE
WASHINGTON CH, OH 43160
(740) 335-9270 99 BEDS

ST CATHERINE'S MANOR OF WASHINGTON COURT HOUSE
250 GLENN AVENUE
WASHINGTON COURT HOU, OH 43160
(740) 335-9290 68 BEDS

ASSISTED LIVING FACILITIES-FAYETTE CO.

CARRIAGE COURT OF WASHINGTON COURT HOUSE
500 NORTH GLENN AVENUE
WASHINGTON COURT HOU, OH 43160
(740) 333-3434 72 BEDS

SKILLED NURSING FACILITIES-FRANKLIN CO

ALTERCARE OF CANAL WINCHESTER POST
ACUTE REHAB
6725 THRUSH DRIVE
CANAL WINCHESTER, OH 43110
(614) 920-9434 72 BEDS

ALTERCARE OF HILLIARD POST ACUTE
CENTER INC
4660 TRUEMAN BLVD
HILLIARD, OH 43026
(614) 850-8655 72 BEDS

ARBORS EAST NURSING & REHAB
5500 EAST BROAD STREET
COLUMBUS, OH 43213
(614) 575-9003 100 BEDS

ARLINGTON COURT NURSING HOME
1605 NORTHWEST PROFESSIONAL PLAZA
COLUMBUS, OH 43220
(614) 451-5677 130 BEDS

BON-ING CARE & REHAB. CENTER
121 JAMES ROAD
GAHANNA, OH 43230
(614) 475-7222 100 BEDS

BRYDEN PLACE
1169 BRYDEN ROAD
COLUMBUS, OH 43205
(614) 258-6623 147 BEDS

COLUMBUS ALZHEIMER CARE CENTER
700 JASONWAY AVENUE
COLUMBUS, OH 43214
(614) 459-7050 100 BEDS

COLUMBUS HEALTHCARE CENTER
4301 CLIME ROAD, NORTH
COLUMBUS, OH 43228
(614) 276-4400 100 BEDS

COLUMBUS COLONY FOR ELDERLY CARE
1150 COLONY DRIVE
WESTERVILLE, OH 43081
(614) 891-5055 150 BEDS

COLUMBUS REHABILITATION & SUBACUTE
44 SOUTH SOUDER AVENUE
COLUMBUS, OH 43222
(614) 228-5900 120 BEDS

COLUMBUS WEST PARK NURSING & REHAB
1700 HEINZERLING DRIVE
COLUMBUS, OH 43223
(614) 274-4222 100 BEDS

THE CONVALARIUM AT INDIAN RUN
6430 POST ROAD
DUBLIN, OH 43017
(614) 761-1188 90 BEDS

CROWN POINTE CARE CENTER
1850 CROWN PARK COURT
COLUMBUS, OH 43235
(614) 459-7293 100 BEDS

DARBY GLENN NURSING & REHABILITATION
4787 TREMONT CLUB DRIVE
HILLIARD, OH 43026
(614) 777-6001 100 BEDS

EASTLAND HEALTH CARE AND REHAB.
2425 KIMBERLY PARKWAY EAST
COLUMBUS, OH 43232
(614) 868-9306 93 BEDS

EDGEWOOD MANOR OF WESTERVILLE
140 NORTH STATE STREET
WESTERVILLE, OH 43086
(614) 882-4055 70 BEDS

FIRST COMMUNITY VILLAGE HEALTHCARE
1801 RIVERSIDE DRIVE
COLUMBUS, OH 43212
(614) 324-4462 163 BEDS

SKILLED NURSING FACILITIES-FRANKLIN CO.

<p>FOREST HILLS CENTER 2841 EAST DUBLIN-GRANVILLE COLUMBUS, OH 43231 (614) 891-1111 75 BEDS</p> <p>FRIENDSHIP VILLAGE HEALTH CENTER 5800 FOREST HILLS BOULEVARD COLUMBUS, OH 43231 (614) 890-8285 90 BEDS</p> <p>FRIENDSHIP VILLAGE OF DUBLIN 6000 RIVERSIDE DRIVE DUBLIN, OH 43017 (614) 764-1600 60 BEDS</p> <p>GLENMONT CENTER 4599 AVERY ROAD HILLIARD, OH 43026 (614) 876-0084 25 BEDS</p> <p>HEALTHCARE CENTER AT THE FORUM 4590 KNIGHTSBRIDGE BOULEVARD COLUMBUS, OH 43214 (614) 451-6766 60 BEDS</p> <p>HEARTLAND OF UPTOWN WESTERVILLE 140 OLD COUNTY LINE ROAD WESTERVILLE, OH 43081 (614) 882-1511 174 BEDS</p> <p>HEARTLAND OF WESTERVILLE 1060 EASTWIND DRIVE WESTERVILLE, OH 43081 (614) 895-1038 130 BEDS</p> <p>HEARTLAND-VICTORIAN VILLAGE 920 THURBER DRIVE WEST COLUMBUS, OH 43215 (614) 464-2273 104 BEDS</p> <p>HIGHBANKS CARE CENTER 111 LAZELLE ROAD EAST WORTHINGTON, OH 43235 (614) 888-2021 56 BEDS</p>	<p>ISABELLE RIDGWAY CARE CENTER 1520 HAWTHORNE AVENUE COLUMBUS, OH 43203 (614) 252-4931 100 BEDS</p> <p>KINDRED--WINCHESTER PLACE 36 LEHMAN DRIVE CANAL WINCHESTER, OH 43110 (614) 834-2273 181 BEDS</p> <p>KINDRED- FRANKLIN WOODS 2770 CLIME ROAD COLUMBUS, OH 43223 (614) 276-8222 100 BEDS</p> <p>THE LAURELS OF HILLIARD 5471 SCIOTO DARBY ROAD HILLIARD, OH 43026 (614) 876-7356 122 BEDS</p> <p>THE LAURELS OF NORWORTH 6830 NORTH HIGH STREET WORTHINGTON, OH 43085 (614) 888-4553 150 BEDS</p> <p>LAURELS OF WORTHINGTON 1030 NORTH HIGH STREET WORTHINGTON, OH 43085 (614) 885-0408 100 BEDS</p> <p>THE MANOR AT WHITEHALL 4805 LANGLEY AVE WHITEHALL, OH 43213 (614) 501-8271 150 BEDS</p> <p>MAYFAIR VILLAGE NURSING CARE 3000 BETHEL ROAD COLUMBUS, OH 43220 (614) 889-6320 100 BEDS</p> <p>MCNAUGHTEN POINTE NURSING & REHAB 1425 YORKLAND ROAD COLUMBUS, OH 43232 (614) 861-6666 150 BEDS</p>
---	--

SKILLED NURSING FACILITIES-FRANKLIN CO.

<p>MILL RUN CARE CENTER 3399 MILL RUN DRIVE HILLIARD, OH 43026 (614) 527-3000 66 BEDS</p>	<p>SCIOTO COMMUNITY 433 OBETZ ROAD COLUMBUS, OH 43207 (614) 491-2000 125 BEDS</p>
<p>MINERVA PARK HEALTHCARE & REHAB. 5460 CLEVELAND AVENUE COLUMBUS, OH 43231 (614) 882-2490 101 BEDS</p>	<p>SCIOTO POINTE 740 CANONBY PLACE COLUMBUS, OH 43223 (614) 224-5738 101 BEDS</p>
<p>MOHUN HEALTH CARE CENTER 2340 AIRPORT DRIVE COLUMBUS, OH 43219 (614) 416-6132 72 BEDS</p>	<p>SUMMIT'S TRACE HEALTHCARE CENTER 935 NORTH CASSADY AVENUE COLUMBUS, OH 43219 (614) 252-4987 210 BEDS</p>
<p>MONTEREY CARE CENTER 3929 HOOVER ROAD GROVE CITY, OH 43123 (614) 875-7700 200 BEDS</p>	<p>TRADITIONS AT STYGLER ROAD 167 NORTH STYGLER ROAD GAHANNA, OH 43230 (614) 475-8778 100 BEDS</p>
<p>MOTHER ANGELINE MCCRORY MANOR 5199 EAST BROAD STREET COLUMBUS, OH 43213 (614) 751-5700 147 BEDS</p>	<p>VILLA ANGELA CARE CENTER 5700 KARL ROAD COLUMBUS, OH 43229 (614) 846-5420 225 BEDS</p>
<p>NEW ALBANY CARE CENTER 5691 THOMPSON ROAD COLUMBUS, OH 43230 (614) 855-8866 67 BEDS</p>	<p>WESLEY GLEN HEALTH CENTER 5155 NORTH HIGH STREET COLUMBUS, OH 43214 (614) 888-7492 81 BEDS</p>
<p>REGENCY MANOR NURSING & REHAB 2000 REGENCY MANOR CIRCLE COLUMBUS, OH 43207 (614) 445-8261 275 BEDS</p>	<p>WESLEY RIDGE--ROBERT A BARNES CENT. 2225 TAYLOR PARK DRIVE REYNOLDSBURG, OH 43068 (614) 759-0023 25 BEDS</p>
<p>REHAB. & HEALTH CENTER OF GAHANNA 5151 NORTH HAMILTON ROAD COLUMBUS, OH 43230 (614) 337-1066 112 BEDS</p>	<p>WESTMINSTER-THURBER COMMUNITY 717 NEIL AVENUE COLUMBUS, OH 43215 (614) 228-8888 128 BEDS</p>
<p>SANCTUARY AT TUTTLE CROSSING 4880 TUTTLE CROSSING DUBLIN, OH 43017 (614) 760-8870 66 BEDS</p>	<p>WEXNER HERITAGE VILLAGE 1151 COLLEGE AVENUE COLUMBUS, OH 43209 (614) 231-4900 149 BEDS</p>

SKILLED NURSING FACILITIES-FRANKLIN CO

WHETSTONE CARE CENTER
3710 OLENTANGY RIVER ROAD
COLUMBUS, OH 43214
(614) 457-1100 200 BEDS

WILLOW BROOK CHRISTIAN HOME
55 LAZELLE ROAD
COLUMBUS, OH 43235
(614) 885-3300 50 BEDS

WORTHINGTON CHRISTIAN VILLAGE
165 HIGHBLUFFS BOULEVARD
COLUMBUS, OH 43235
(614) 846-6076 50 BEDS

ASSISTED LIVING FACILITIES-FRANKLIN CO.

ABBINGTON ARLINGTON ASSISTED LIVING
1320 OLD HENDERSON ROAD
COLUMBUS, OH 43220
(614) 451-4575 48 BEDS

AMBASSADOR SUITES AT
FORUM/KNIGHTSBRIDGE
4590 KNIGHTSBRIDGE BLVD
COLUMBUS, OH 43214
(614) 451-6793 59 BEDS

CARRIAGE COURT OF GROVE CITY
2320 SONORA DRIVE
GROVE CITY, OH 43123
(614) 871-8000 76 BEDS

CARRIAGE COURT OF HILLIARD
3570 HERITAGE CLUB DRIVE
HILLIARD, OH 43026
(614) 529-7470 136 BEDS

CLAREMONT RETIREMENT VILLAGE
7041 BENT TREE BLVD
COLUMBUS, OH 43235
(614) 761-2011 17 BEDS

CONVALARIUM AT INDIAN RUN THE
6430 POST ROAD
DUBLIN, OH 43017
(614) 761-1188 10 BEDS

THE COTTAGE AT WEXNER HERITAGE
1151 COLLEGE AVENUE
COLUMBUS, OH 43209
(614) 231-4900 11 BEDS

CREEKSIDE AT THE VILLAGE
2200 WELCOME PLACE
COLUMBUS, OH 43209
(614) 559-5500 138 BEDS

DR. ROY A. BURKHART CENTER
1802 RIVERSIDE DRIVE
COLUMBUS, OH 43212
(614) 486-9511 74 BEDS

EMERALD CROSSINGS
7220 MUIRFIELD DRIVE
DUBLIN, OH 43017
(614) 336-3677 100 BEDS

EMERITUS AT CHESTNUT HILL
5055 THOMPSON ROAD
COLUMBUS, OH 43230
(614) 855-3700 125 BEDS

EMERITUS AT LAKEVIEW
4000 LAKEVIEW CROSSING
GROVEPORT, OH 43125
(614) 836-5990 99 BEDS

ASSISTED LIVING FACILITIES-FRANKLIN CO.

<p>EMERITUS AT OUTLOOK MANOR 690 COOPER ROAD WESTERVILLE, OH 43081 (614) 794-2499 151 BEDS</p> <p>EMERITUS AT PINNACLE 1305 LAMPLIGHTER DRIVE GROVE CITY, OH 43123 (614) 277-1200 135 BEDS</p> <p>THE FORUM AT KNIGHTSBRIDGE 4625 KNIGHTSBRIDGE BLVD. COLUMBUS, OH 43214 (614) 538-6660 71 BEDS</p> <p>GARDENS AT WHETSTONE 3710 OLENTANGY RIVER ROAD COLUMBUS, OH 43214 (614) 457-1100 72 BEDS</p> <p>GLENMONT CENTER 4599 AVERY ROAD HILLIARD, OH 43026 (614) 876-0084 10 BEDS</p> <p>HOOVER HAUS 3675 HOOVER ROAD GROVE CITY, OH 43123 (614) 875-7600 22 BEDS</p> <p>MAYFAIR VILLAGE RETIREMENT COMM. 3011 HAYDEN ROAD COLUMBUS, OH 43235 (614) 889-6202 172 BEDS</p> <p>MEADOWS AT FRIENDSHIP VILLAGE 6000 RIVERSIDE DRIVE DUBLIN, OH 43017 (614) 717-1600 46 BEDS</p> <p>MILL RUN CARE CENTER 3399 MILL RUN DRIVE HILLIARD, OH 43026 (614) 527-3000 42 BEDS</p>	<p>NATIONAL CHURCH RESIDENCES LINCOLN VILLAGE 4959 MEDFIELD WAY COLUMBUS, OH 43228 (614) 870-1123 66 BEDS</p> <p>NEW ALBANY CARE CENTER 5691 THOMPSON ROAD COLUMBUS, OH 43230 (614) 855-8866 42 BEDS</p> <p>OAKLEAF VILLAGE 5500 KARL ROAD COLUMBUS, OH 43229 (614) 431-1739 150 BEDS</p> <p>PATTERSON ASSISTED LIVING CENTER 71 WOODLAND AVENUE COLUMBUS, OH 43203 (614) 258-2095 43 BEDS</p> <p>RIDGEWOOD AT FRIENDSHIP VILLAGE 5675 PONDEROSA BLVD. COLUMBUS, OH 43231 (614) 890-8285 70 BEDS</p> <p>SANCTUARY AT TUTTLE CROSSING 4880 TUTTLE CROSSING DUBLIN, OH 43017 (614) 760-8870 56 BEDS</p> <p>SCIOTO COMMUNITY 433 OBETZ ROAD COLUMBUS, OH 43207 (614) 491-2000 64 BEDS</p> <p>STERLING HOUSE OF WESTERVILLE 6377 COOPER ROAD COLUMBUS, OH 43231 (614) 901-2100 50 BEDS</p> <p>SUMMIT'S TRACE HEALTHCARE CENTER 935 NORTH CASSADY AVENUE COLUMBUS, OH 43219 (614) 257-4331 111 BEDS</p>
--	--

ASSISTED LIVING FACILITIES-FRANKLIN CO.

SUNRISE OF BEXLEY
2600 EAST MAIN STREET
BEXLEY, OH 43209
(614) 235-3900 75 BEDS

SUNRISE OF GAHANNA
775 EAST JOHNSTOWN ROAD
GAHANNA, OH 43230
(614) 418-9775 64 BEDS

SUNRISE OF WORTHINGTON
6525 NORTH HIGH STREET
WORTHINGTON, OH 43085
(614) 846-6500 105 BEDS

SUNRISE ON THE SCIOTO
3500 RIVERSIDE DRIVE
UPPER ARLINGTON, OH 43221
(614) 846-6500 75 BEDS

TRADITIONS AT MILL RUN
3550 FISHINGER BOULEVARD
HILLIARD, OH 43026
(614) 771-0100 150 BEDS

TRADITIONS AT STYGLER COMMONS
165 NORTH STYGLER ROAD
GAHANNA, OH 43230
(614) 475-8778 54 BEDS

TRILLIUM PLACE
3500 TRILLIUM CROSSING
COLUMBUS, OH 43235
(614) 734-1000 120 BEDS

VILLAGE AT WESTERVILLE RETIREMENT
215 HUBER VILLAGE BOULEVARD
WESTERVILLE, OH 43081
(614) 882-3782 73 BEDS

THE VILLAS AT SAINT THERESE
25 NOE-BIXBY ROAD
COLUMBUS, OH 43213
(614) 864-3576 50 BEDS

WESLEY GLEN HEALTH CENTER
5155 NORTH HIGH STREET
COLUMBUS, OH 43214
(614) 888-7492 133 BEDS

WESLEY RIDGE
2225 STATE ROUTE 256
REYNOLDSBURG, OH 43068
(614) 759-0023 136 BEDS

WESTMINSTER-THURBER COMMUNITY
645-717 NEIL AVENUE
COLUMBUS, OH 43215
(614) 228-8888 128 BEDS

WILLOW BROOK CHRISTIAN HOME
55 LAZELLE ROAD
COLUMBUS, OH 43235
(614) 885-3300 34 BEDS

THE WOODLANDS AT EASTLAND
2469 KIMBERLY PARKWAY EAST
COLUMBUS, OH 43232
(614) 866-2080 75 BEDS

THE WOODLANDS OF COLUMBUS
5380 EAST BROAD STREET
COLUMBUS, OH 43213 [FRANKLIN
COUNTY]
(614) 755-7591 117 BEDS

WORTHINGTON CHRISTIAN VILLAGE, INC.
165 HIGHBLUFFS BOULEVARD
COLUMBUS, OH 43235
(614) 846-6076 60 BEDS

SKILLED NURSING FACILITIES-LICKING CO

ARLINGTON CARE CENTER
98 SOUTH 30TH STREET
NEWARK, OH 43055
(740) 344-0303 143 BEDS

AUTUMN CARE CENTER INC
151 PRICE ROAD
NEWARK, OH 43055
(740) 633-2321 81 BEDS

AUTUMN HEALTHCARE
17 FORRY STREET
NEWARK, OH 43055
(740) 345-9197 48 BEDS

FLINT RIDGE NURSING & REHAB.
1450 WEST MAIN STREET
NEWARK, OH 43055
(740) 344-9465 101 BEDS

HEATH NURSING CARE CENTER
717 SOUTH 30TH STREET
HEATH, OH 43056
(740) 522-1171 150 BEDS

KINDRED TRANSITIONAL CARE & REHAB-
75 MCMILLEN DRIVE
NEWARK, OH 43055
(740) 344-0357 300 BEDS

PATASKALA OAKS CARE CENTER
144 EAST BROAD STREET
PATASKALA, OH 43062
(740) 927-9888 86 BEDS

PINE KIRK NURSING HOME
205 EAST MAIN STREET
KIRKERSVILLE, OH 43033
(740) 927-3209 24 BEDS

TUSCANY GARDENS
7400 HAZELTON ETNA ROAD SW
PATASKALA, OH 43062
(740) 964-0803 123 BEDS

UTICA NURSING HOME
233 NORTH MAIN ST
UTICA, OH 43080
(740) 892-3414 32 BEDS

KENDAL AT GRANVILLE
2158 COLUMBUS ROAD
GRANVILLE, OH 43023
(740) 321-0400 32 BEDS

ASSISTED LIVING FACILITIES- LICKING CO

AUTUMN HEALTH CARE
17 FORRY STREET
NEWARK, OH 43055
(740) 345-9197 9 BEDS

THE CHAPEL GROVE INN
1400 CHAPEL WAY
HEATH, OH 43056
(740) 522-4663 120 BEDS

CHESTNUT HOUSE
1065 JOHNSON AVENUE
NEWARK, OH 43055
(888) 252-7333 45 BEDS

KENDAL AT GRANVILLE
2158 COLUMBUS ROAD
GRANVILLE, OH 43023
(740) 321-0400 20 BEDS

SHARONBROOKE
920 SHARON VALLEY ROAD
NEWARK, OH 43055
(740) 366-7333 125 BEDS

STERLING HOUSE OF NEWARK
331 GOOSEPOND ROAD
NEWARK, OH 43055
(740) 366-0005 50 BEDS

SKILLED NURSING FACILITIES-MADISON CO

ARBORS OF LONDON
218 ELM STREET
LONDON, OH 43140
(740)-852-3100 100 BEDS

ARBORS WEST
375 WEST MAIN STREET
WEST JEFFERSON, OH 43162
(740)-879-7661 100 BEDS

ASSISTED LIVING FACILITIES-MADISON CO.

EDGEWATER PLACE
11351 LAFAYETTE - PLAIN CITY ROAD
PLAIN CITY, OH 43064
(614) 873-9700 80 BEDS

THE MADISON HOUSE
351 KENY BOULEVARD
LONDON, OH 43140
(740) 845-0750 104 BEDS

SKILLED NURSING FACILITIES-PICKAWAY CO

BROWN MEMORIAL HOME, INC. 158 EAST MOUND STREET CIRCLEVILLE, OH 43113 (740) 474-6238	44 BEDS
CIRCLEVILLE CENTER 1155 ATWATER AVENUE CIRCLEVILLE, OH 43113 (740) 477-1695	100 BEDS
LOGAN ELM HEALTH CARE CENTER 370 TARLTON ROAD CIRCLEVILLE, OH 43113 (740) 474-3121	101 BEDS
PICKAWAY MANOR CARE CENTER 391 CLARK DRIVE CIRCLEVILLE, OH 43113 (740) 474-6036	100 BEDS

ASSISTED LIVING FACILITIES-PICKAWAY CO.

BROWN MEMORIAL HOME, INC 158 EAST MOUND STREET CIRCLEVILLE, OH 43113 (740) 474-6238	15 BEDS
PICKAWAY MANOR STUDIOS 391 CLARK DRIVE CIRCLEVILLE, OH 43113 (740) 474-6036	25 BEDS

SKILLED NURSING FACILITIES-UNION CO

HEARTLAND OF MARYSVILLE
755 SOUTH PLUM STREET
MARYSVILLE, OH 43040
(937) 644-8836 100 BEDS

MILCREST NURSING CENTER
730 MILCREST DRIVE
MARYSVILLE, OH 43040
(937) 642-1026 50 BEDS

ASSISTED LIVING FACILITIES-UNION CO.

CARRIAGE COURT OF MARYSVILLE
717 SOUTH WALNUT STREET
MARYSVILLE, OH 43040
(937) 642-2200 70 BEDS

EMERITUS AT HALCYON VILLAGE
1565 LONDON AVENUE
MARYSVILLE, OH 43040
(937) 738-7342 101 BEDS

The Central Ohio Aging and Disability Resource Network (ADRN) is a collaborative effort of the Central Ohio Area Agency on Aging and community partners, designed to streamline access to long-term services and supports that promote community living, personal choice and independence for older adults and all persons with disabilities regardless of age.

Central Ohio Community Partners Include:

Centers for Independent Living

- **MOBILE: Center for Independent Living** (Mid Ohio)
690 High Street | Columbus, Ohio 43206
Phone: 614-443-5946, www.mobileonline.org/
- **SOCIL (Southeastern Ohio Center for Independent Living)**
Fairfield County Office, 418 South Broad Street, Lancaster, Ohio 43130
(740) 689-1494
Hocking County Office, 1369 East Front Street Logan, Ohio 43138 (740) 380-1475, www.socil.org
- **CDE Center for Disability Empowerment**
670 Morrison Rd., Suite 200, Gahanna, OH 43230 (614) 575-8055
www.disabilityempowerment.net

Senior Service Providers

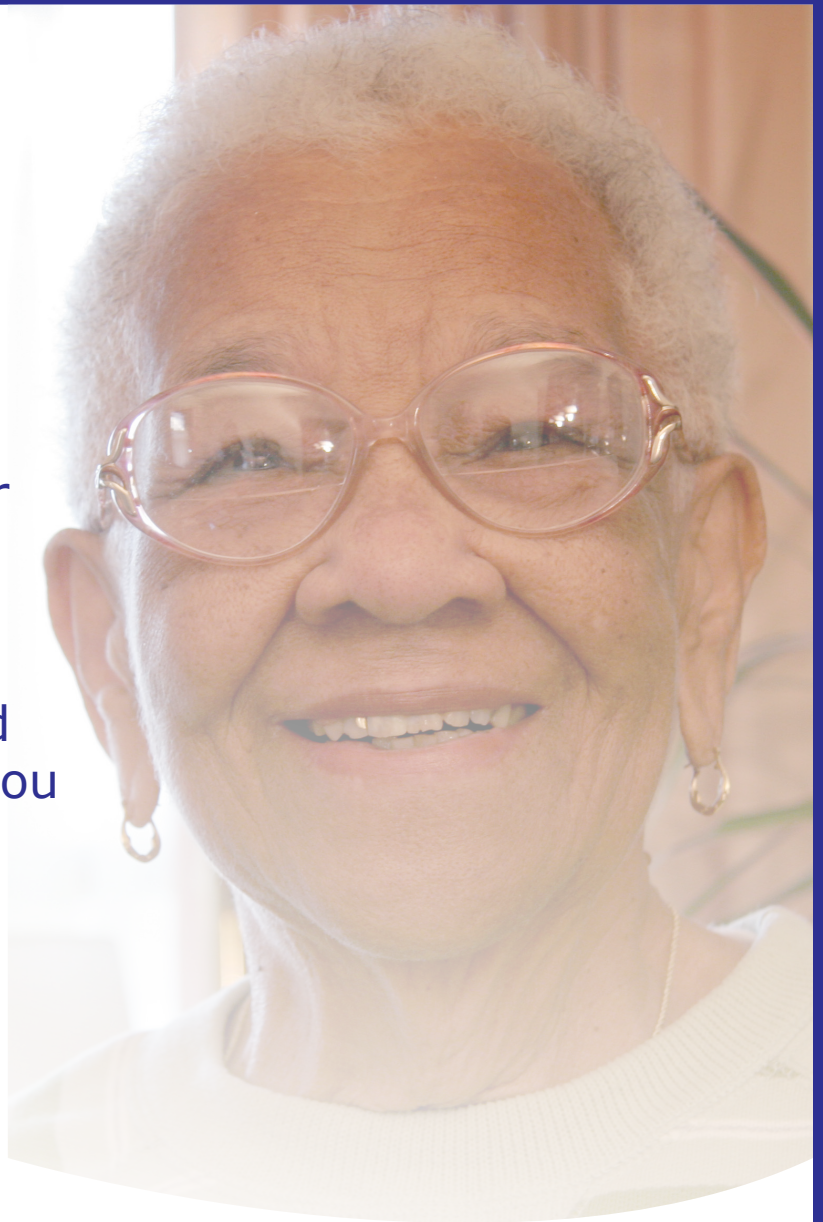
- **Delaware County Council for Older Adults**, 800 Cheshire Dr.
Delaware, OH 43015, 740-363-6677, www.growingolder.org
- **Meals on Wheels Older Adult Alternatives of Fairfield Co**, 253 Boving Road.
Lancaster, OH 43130, 740-681-5050, www.mowfc.org
- **Fayette County Commission on Aging**, 1179 S. Elm St., Washington Court House OH 43160, 740-335-2159, www.seniorcenterelmst.com
- **Franklin Co. Office on Aging**. 280 E. Broad St., 3rd Floor, Columbus, OH 43215, 614-525-6200, www.officeonaging.org
- **Licking Co. Aging Program**, 1058 E. Main St., Newark, OH 43055, 740-345-0821 or 800-452-0097, www.lcap.org
- **Madison Co. Senior Center** 280 W. High St., London, OH 43140, 740-852-3001, www.mcsejior.org
- **Pickaway County Senior Center**, 2105 Chickasaw Dr., P.O. Box 565, Circleville, OH 43113, 740-474-8831, www.pickawayseniors.org
- **Union County Senior Services**, STE D128, 18000 St. Rt. 4, Marysville, OH 43040, 937-644-9629, www.ucseniors.org

Navigating the
Medicare system can
be difficult.

Our experts at the
Central Ohio Area
Agency on Aging are
ready to answer your
Medicare questions!

Call us today to
receive free unbiased
information to help you
make informed
decisions.

We do not
represent or sell
insurance products.



Your Aging and
Disability Resource Network

1-800-589-7277

www.coaaa.org