

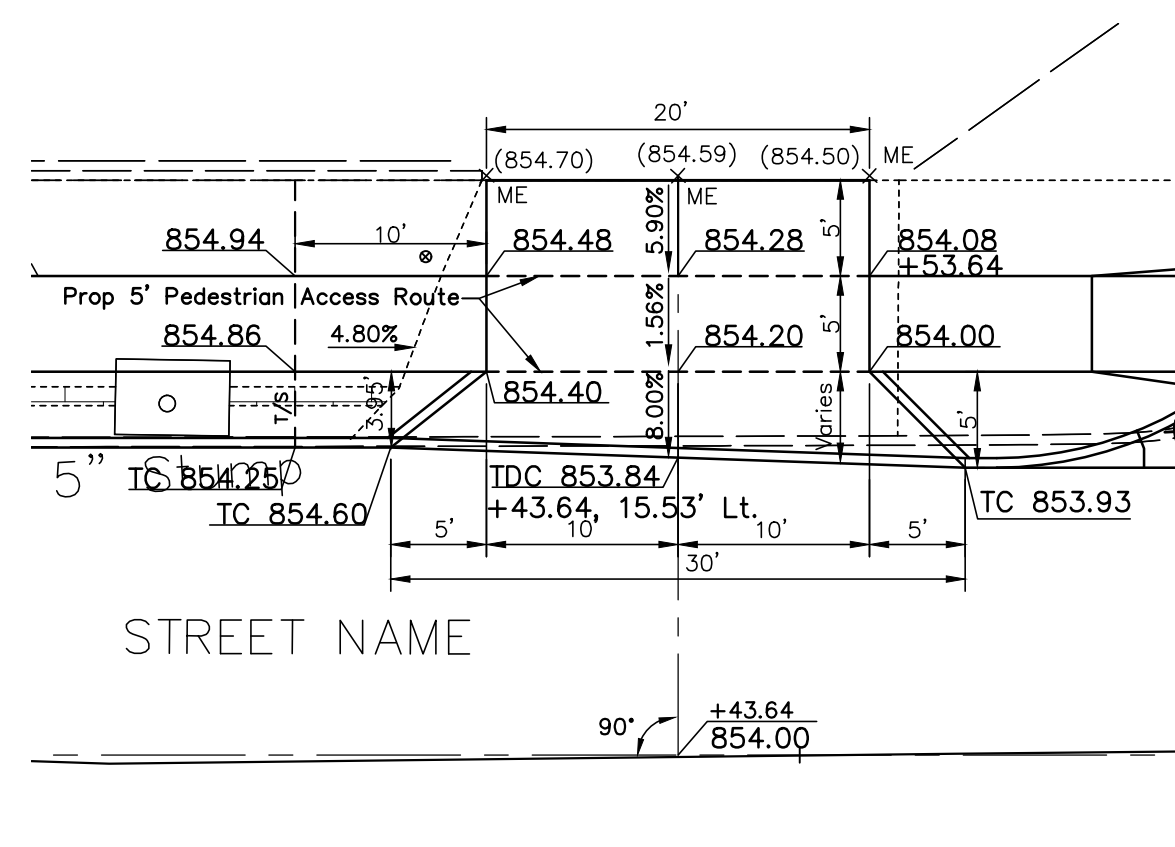
HORIZ. SCALE
 1" = 10'

CALCULATED
 CHECKED

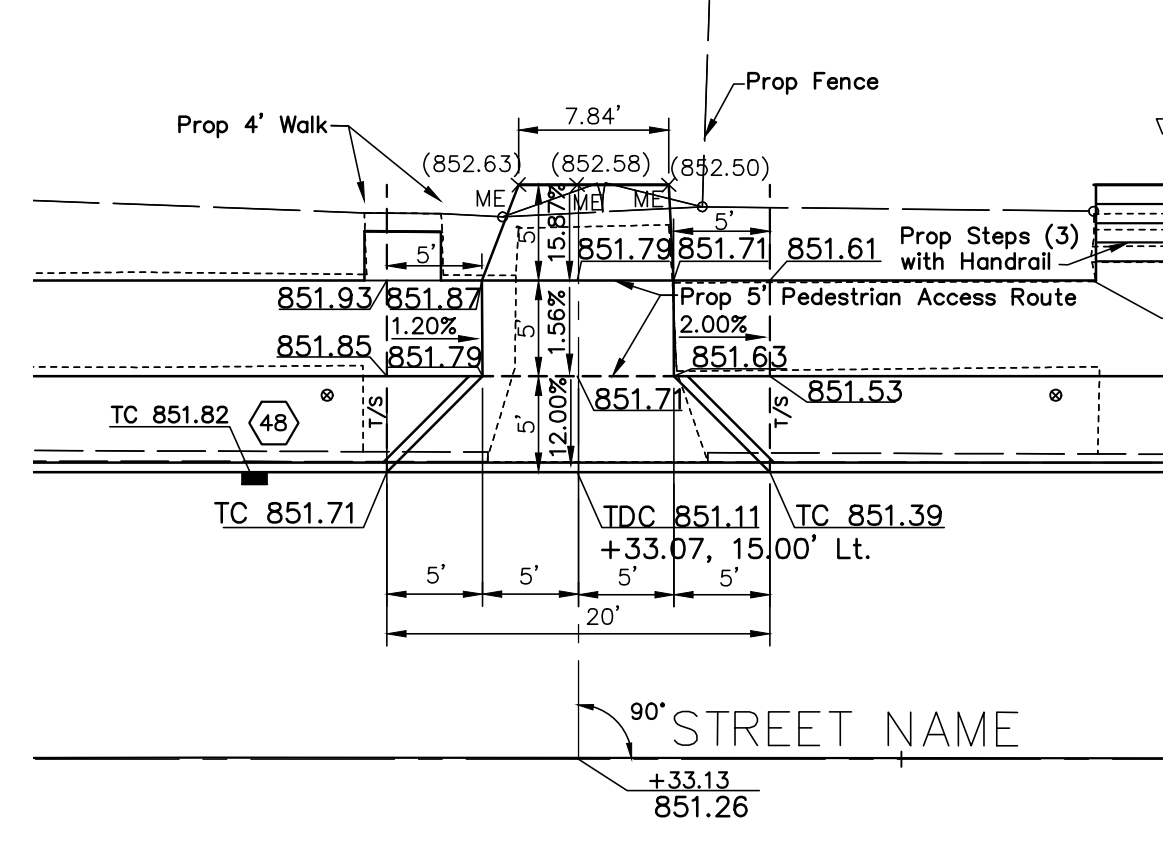
DRIVEWAY DETAILS

PROJECT NAME

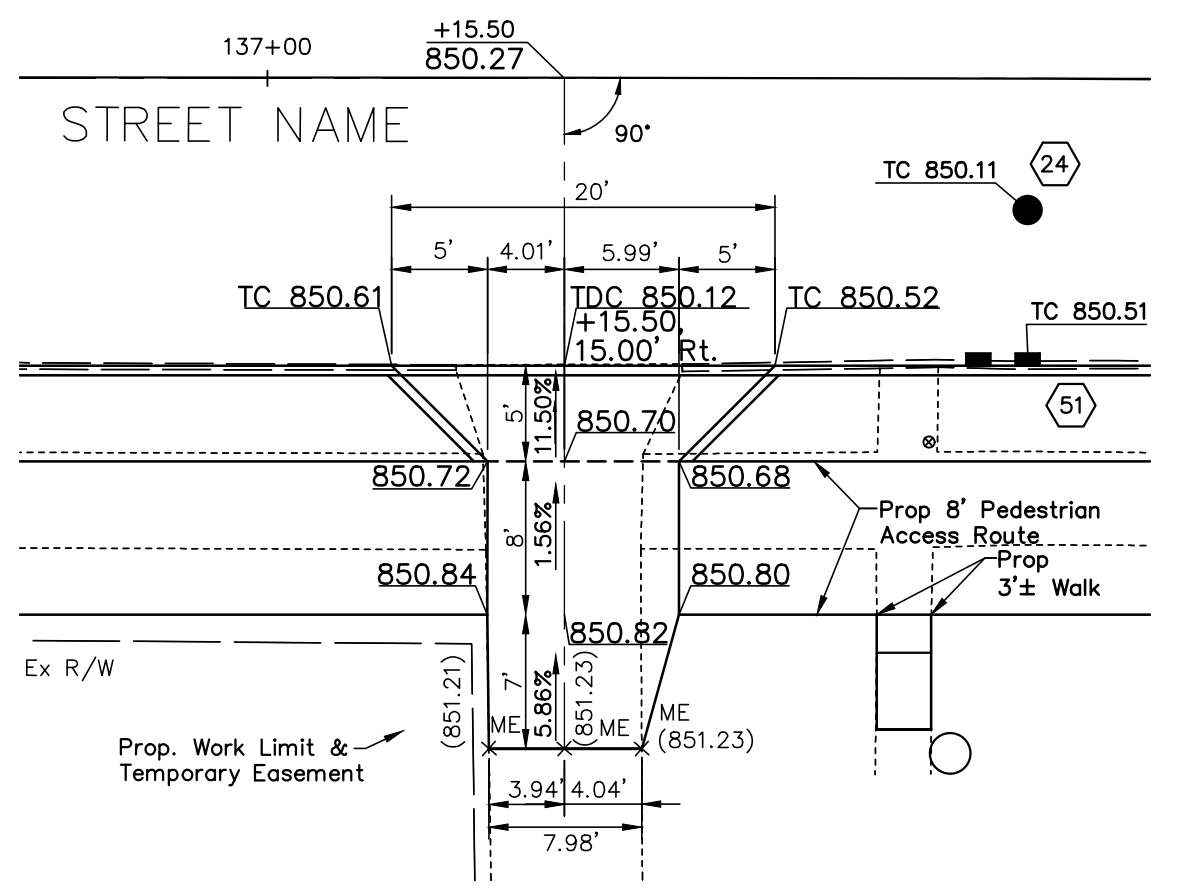
XXXX-E
 XX



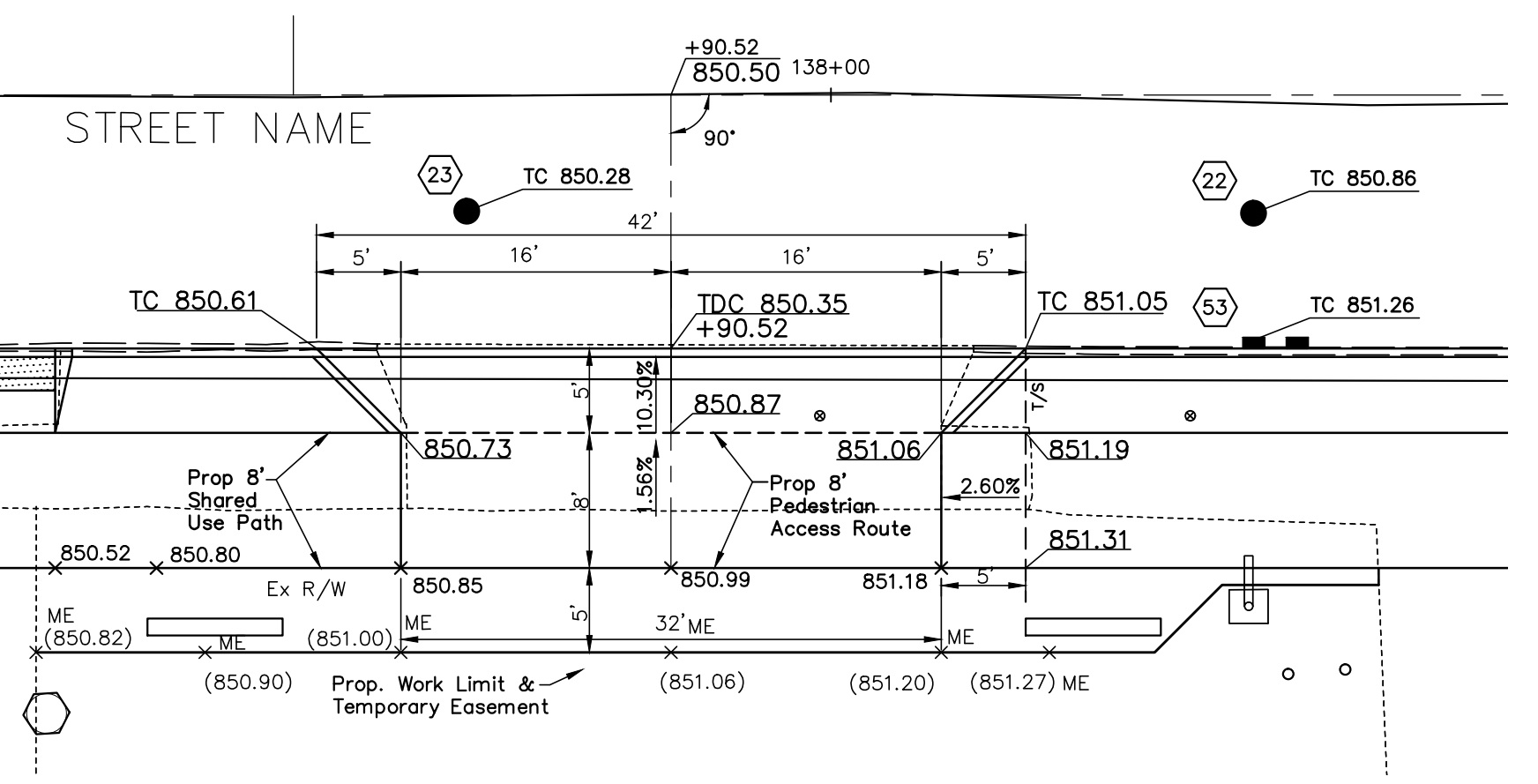
Commercial Drive @ 134+43.64 Lt.
 Scale: 1"=10'



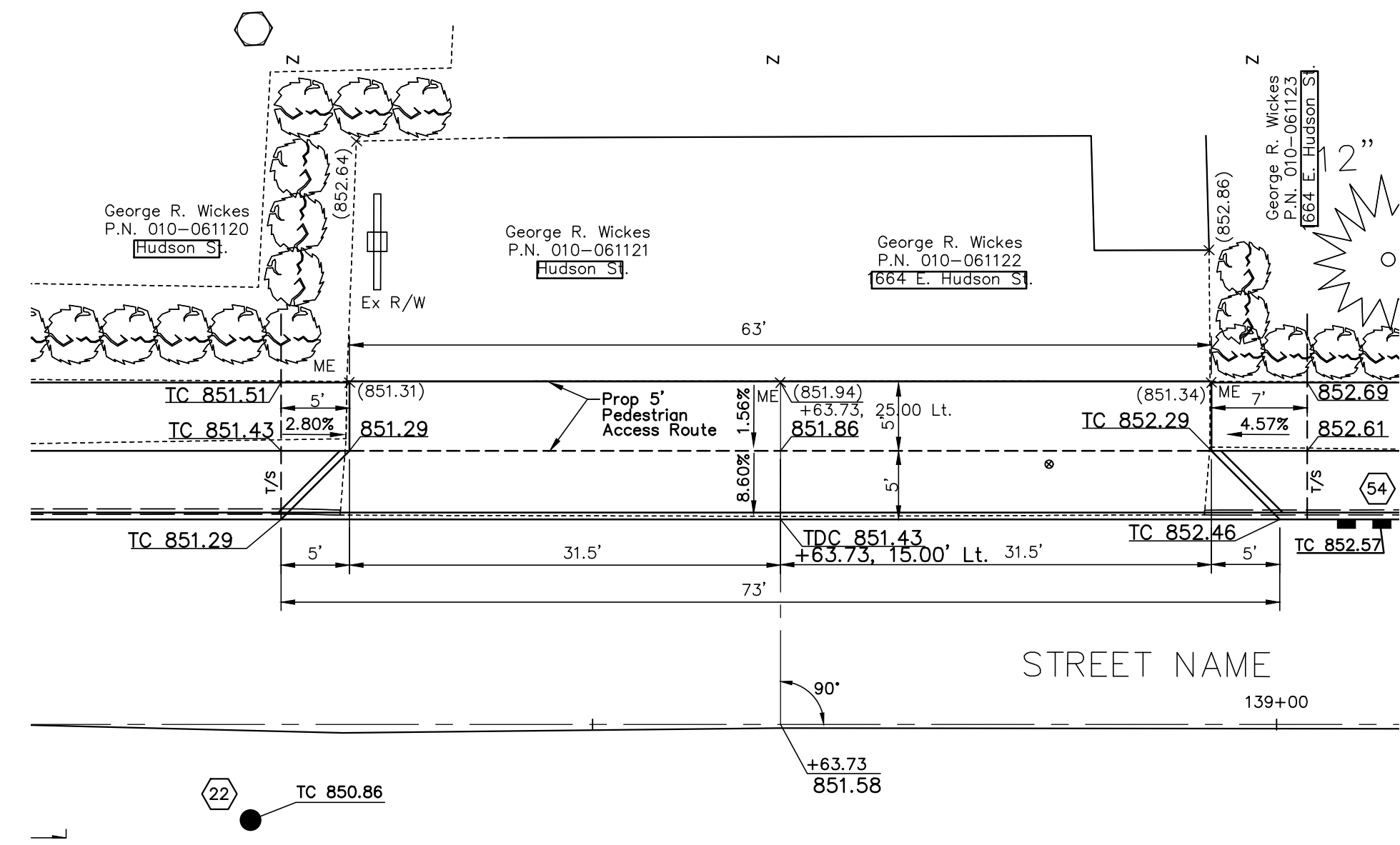
Residential Drive @ 136+33.13 Lt.
 Scale: 1"=10'



Residential Drive @ 137+15.50 Rt.
 Scale: 1"=10'

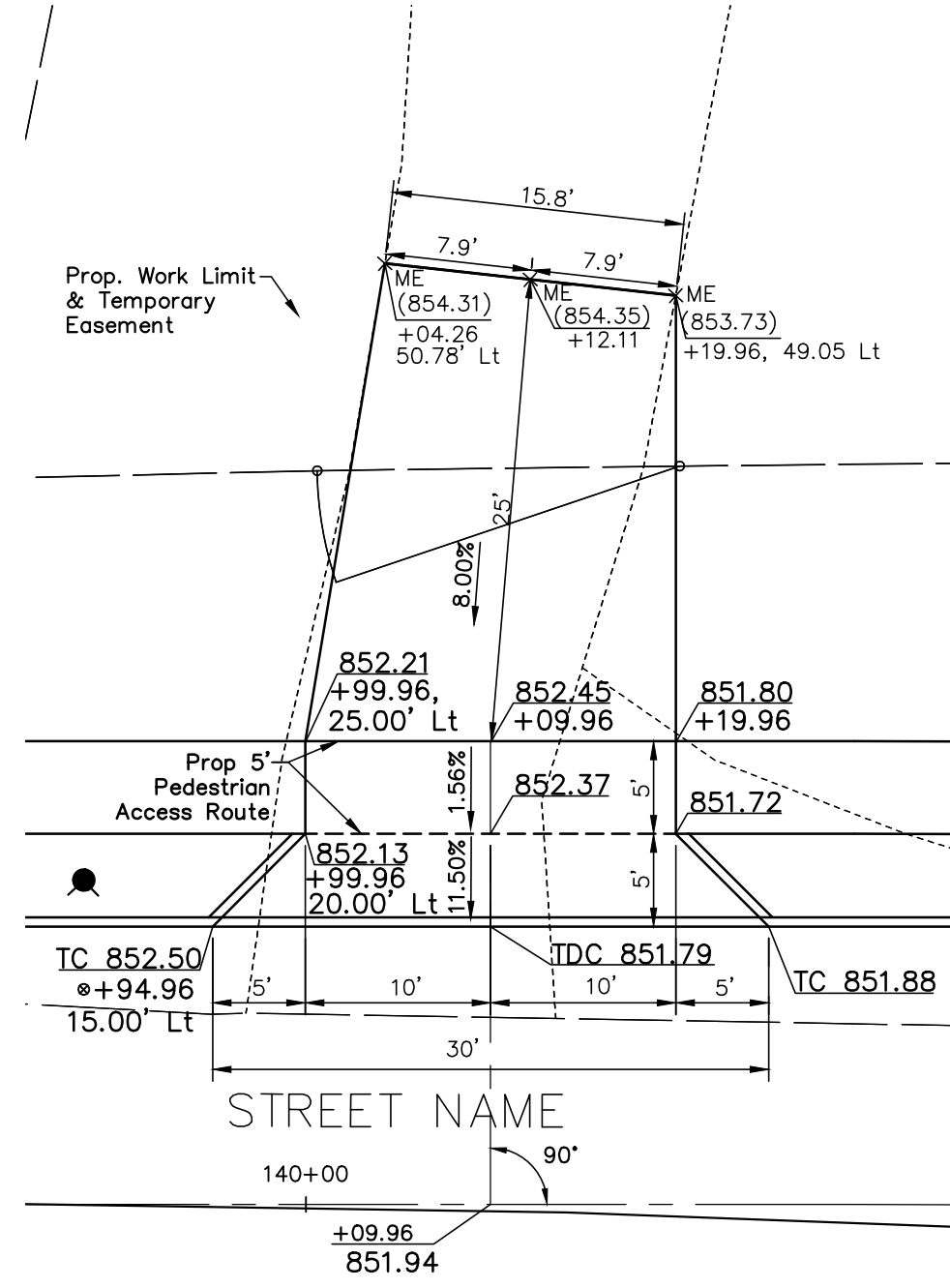


Commercial Drive @ 137+90.52 Rt.
 Scale: 1"=10'



Commercial Drive @ 138+63.73 Lt.
 Scale: 1"=10'

| Ref. Letter | Curve Data Table | | | | | | | Rad. Pt. Sta./Offset Street Name |
|-------------|------------------|--------|--------|--------|-------|-------|-------|----------------------------------|
| | Δ | R | T | L | E | M | A | |
| A | 90°00'00" | 20.00' | 20.00' | 31.42' | 8.28' | 5.86' | 86 SF | 140+45.14, 35.00' Rt. |
| B | 90°00'00" | 20.00' | 20.00' | 31.42' | 8.28' | 5.86' | 86 SF | 141+11.14, 35.00' Rt. |
| C | 87°08'01" | 20.00' | 19.02' | 30.42' | 7.60' | 5.50' | 76 SF | 141+16.45, 35.00' Lt. |
| D | 61°54'58" | 20.00' | 12.00' | 21.61' | 3.32' | 2.85' | 24 SF | 141+86.50, 35.00' Lt. |



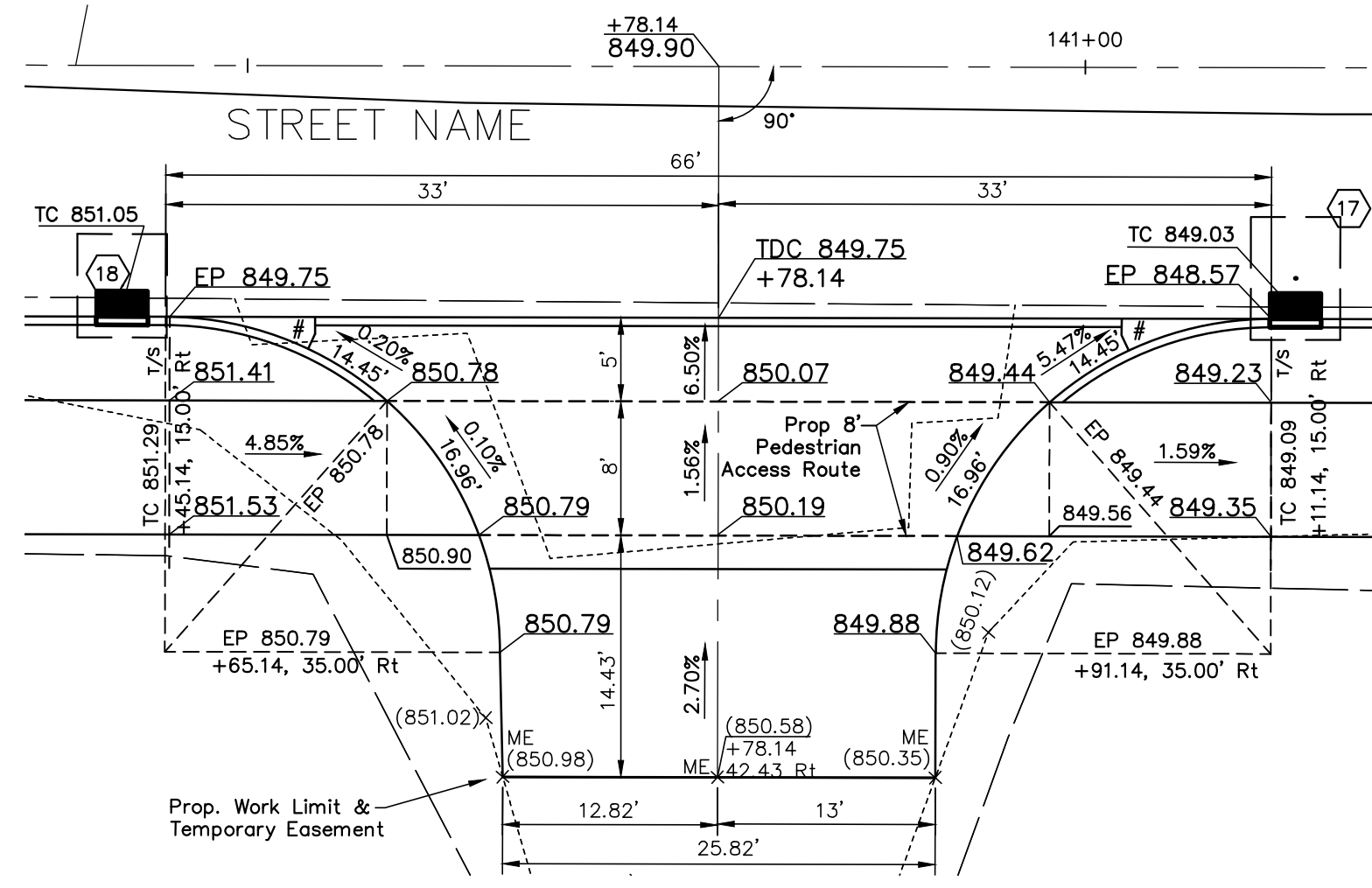
Commercial Drive @ 140+09.96 Lt.
 Scale: 1"=10'

- LEGEND**
- XXX.XX Proposed Elevations
 - (xxx.xx) Existing Elevations
 - XXX.XX Proposed Pavement Crown/Walk Elevation
 - +XX Proposed Station
 - TC XXX.XX Proposed Top of Curb Elevation
 - +XX Proposed Station
 - EP XXX.XX Proposed Edge of Pavement Elevation
 - +XX Proposed Station
 - TC Top of Casting
 - T/S Match Typical Section Grades
 - ME Match Existing
- * Actual elevation is 0.44' lower due to driveway cutout.
 # Taper curb height from 6" to at walk with 1:10 flare.

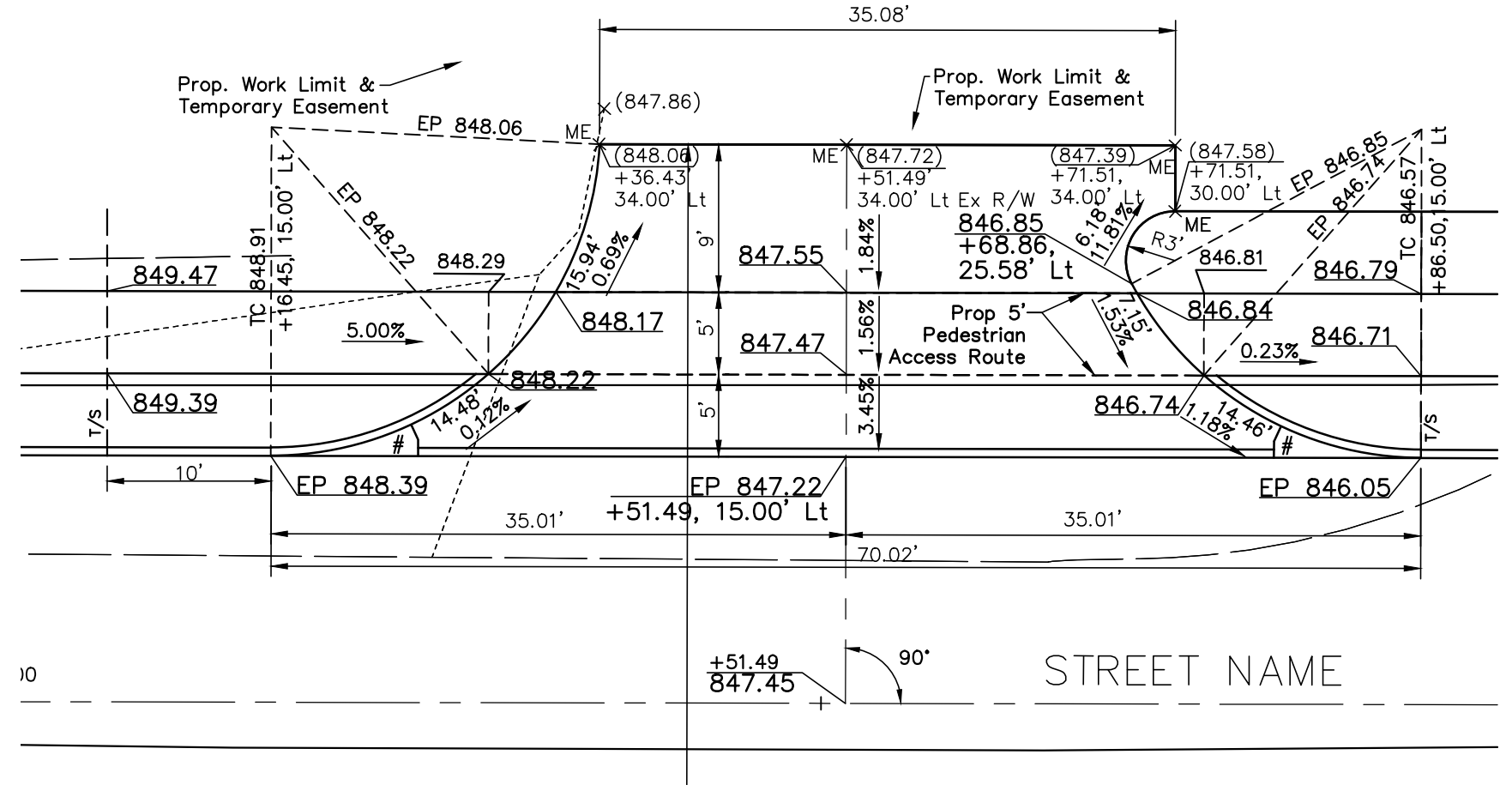
PAVEMENT DETAIL NOTES

Curb return and taper data is shown to face of curb in curb areas and edge of pavement in pavement areas.

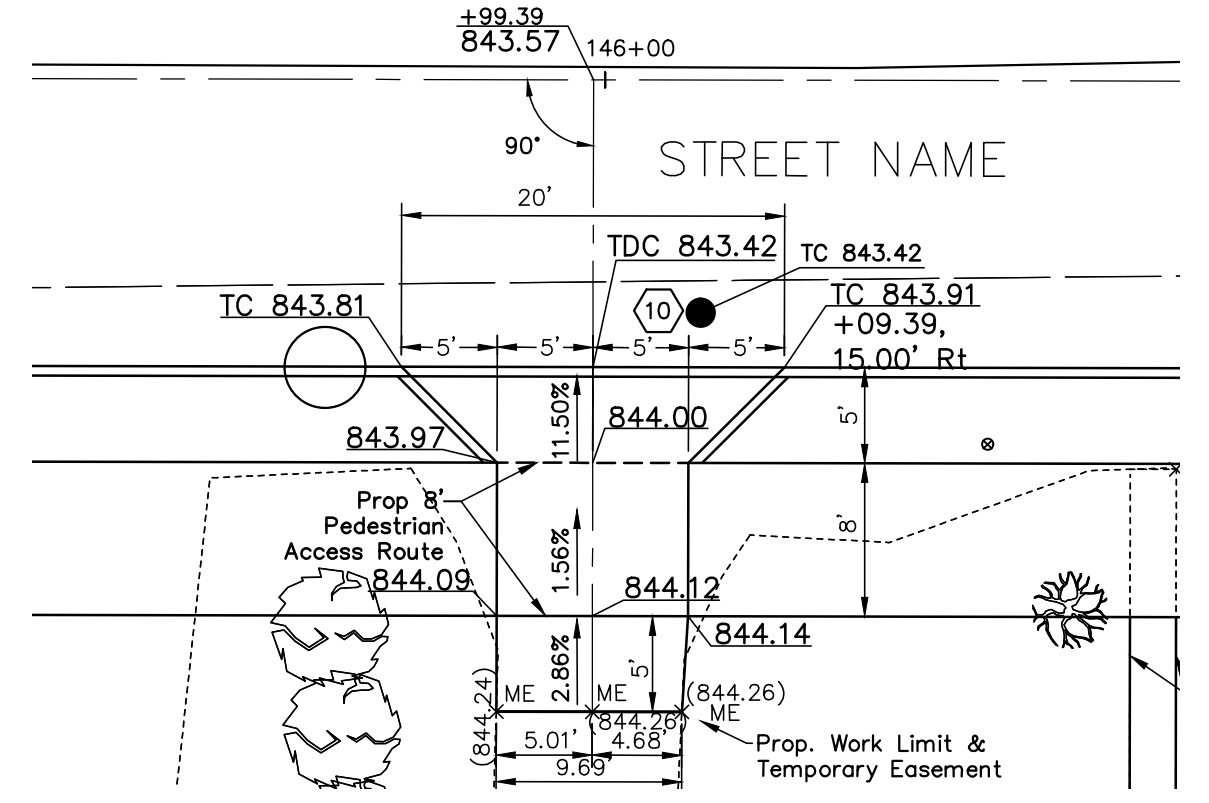
All elevations shown are to finished pavement unless otherwise noted.



Commercial Drive @ 140+78.14 Rt.
 Scale: 1"=10'



Commercial Drive @ 141+51.49 Lt.
 Scale: 1"=10'



Residential Drive @ 145+99.39 Lt.
 Scale: 1"=10'

REVISED 5/16/14

XXXX-E