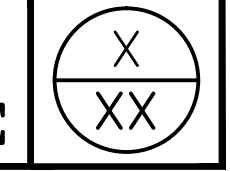


HORIZ. SCALE
50
0
25

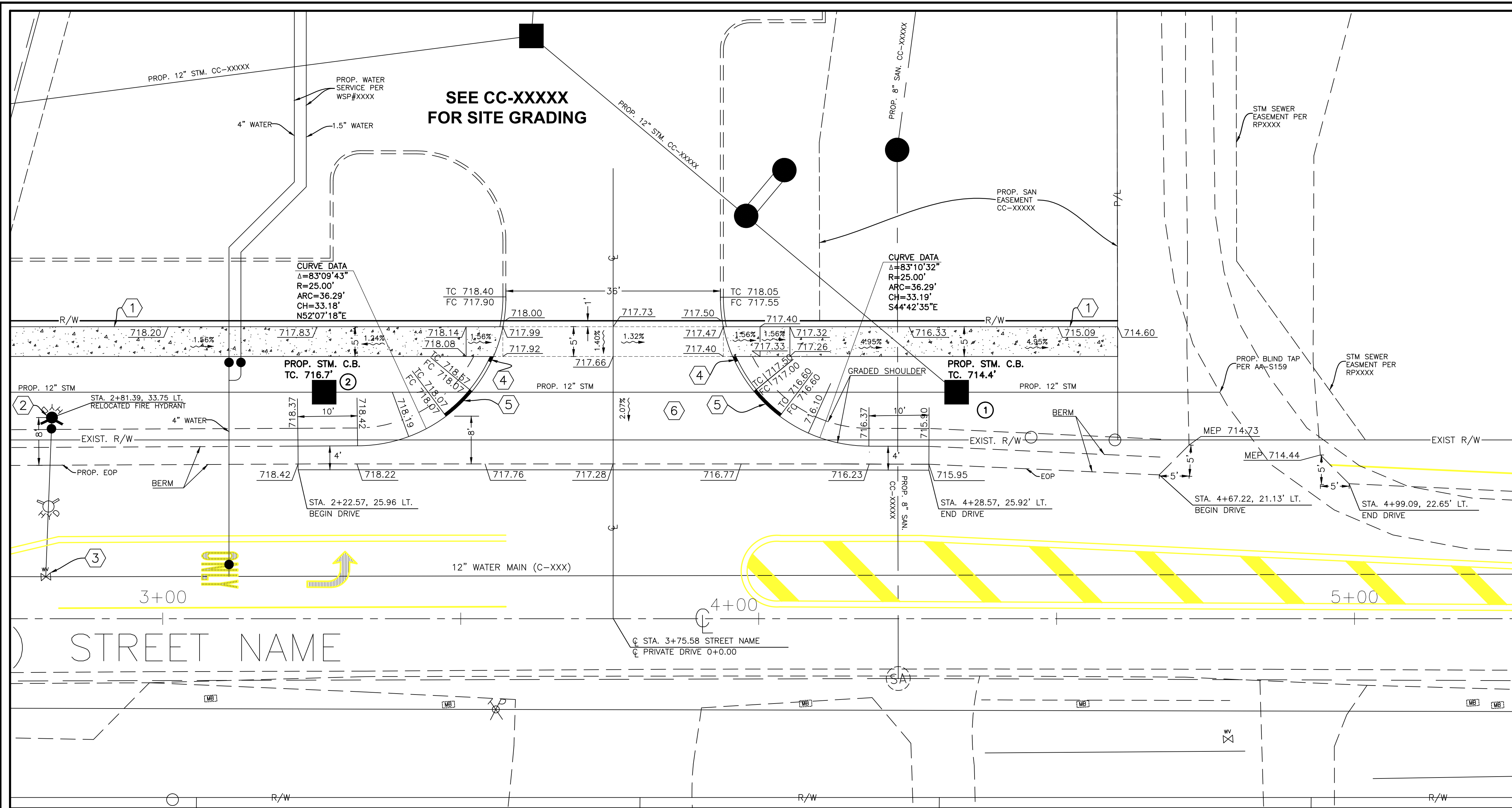
CALCULATED
CHECKED

DETAIL - DRIVE
NON - CURBED STREET

PROJECT NAME



PROPOSED STORM STRUCTURES				
REFERENCE SHEET	NO.	STATION	OFFSET	DESCRIPTION
17	1	4+33.22	38.0' LT	CATCH BASIN, AA-S133
17	2	3+27.08	38.0' LT	CATCH BASIN, AA-S133



DETAIL - DRIVE - STREET NAME
@ C STA. 3+75.58
 SCALE: 1"=10'

KEYED NOTES

- ① PROPOSED STANDARD SIDEWALK PER STD DWG 2300.
- ② PROPOSED FIRE HYDRANT (TYPE 'A'). CONTRACTOR TO REUSE EXISTING FIRE HYDRANT IF PERMITTED BY DOPW (WATER).
- ③ EXISTING WATER VALVE. ADJUST TO GRADE.
- ④ TAPER CURB FROM 6" TO 0" OVER 2'
- ⑤ TAPER CURB FROM 6" TO 0" OVER 6'
- ⑥ PAVEMENT BUILDUP FOR DRIVE PER STD DWG 2208
 ITEM 448 - 4" Asphalt Concrete, Surface Course (Medium Traffic) PG64-22
 ITEM 448 - 4" Asphalt Concrete, Intermediate Course (Medium Traffic) PG64-22
 ITEM 304 - 4" Aggregate Base

STANDARD ABBREVIATIONS	
XXX.XX	= PROPOSED PAVEMENT GRADE ELEVATION
TC XXX.XX FC XXX.XX	= PROPOSED TOP OF CURB/FACE OF CURB ELEVATION
METC XXX.XX	= MEET EXISTING TOP OF CURB
MEP XXX.XX	= MEET EXISTING PAVEMENT
EX XXX.XX	= EXISTING GRADE
EX XXX.XX(TC)	= EXISTING TOP OF CURB GRADE

LEGEND

- ⊙ (S) EXIST. SANITARY MANHOLE
- ⊙ (ST) EXIST. STORM MANHOLE
- ⊙ (CB) EXIST. CATCH BASIN
- ⊙ (V) EXIST. GAS VALVE
- ⊙ (W) EXIST. WATER VALVE
- ⊙ (FH) EXIST. FIRE HYDRANT
- ⊙ (PP) EXIST. POWER POLE
- ⊙ (LP) EXIST. LIGHT POLE
- ⊙ (GP) EXIST. GUY POLE
- ⊙ (TS) EXIST. TRAFFIC SIGN
- ⊙ (TL) EXIST. TRAFFIC LIGHT
- O/L — G/L — EXIST. OVERHEAD ELECTRIC/TELEPHONE LINE
- EX GAS — EXIST. GAS LINE
- EX SAN — EXIST. SANITARY LINE
- EX STORM — EXIST. STORM LINE
- EX WATER — EXIST. WATER LINE

Revised 5/16/14