

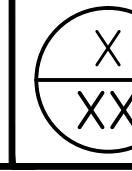
HORIZ. SCALE



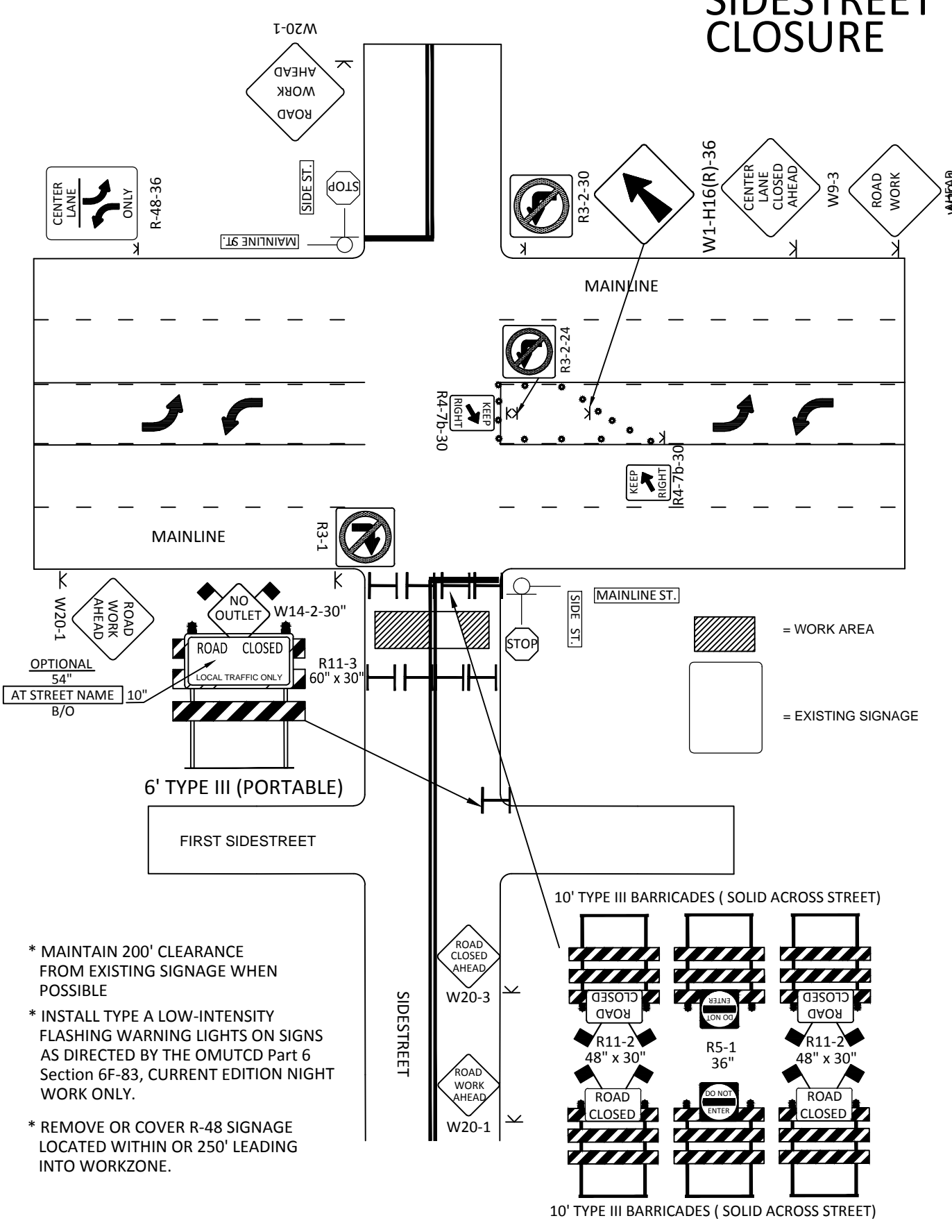
CALCULATED CHECKED

MAINTENANCE OF TRAFFIC

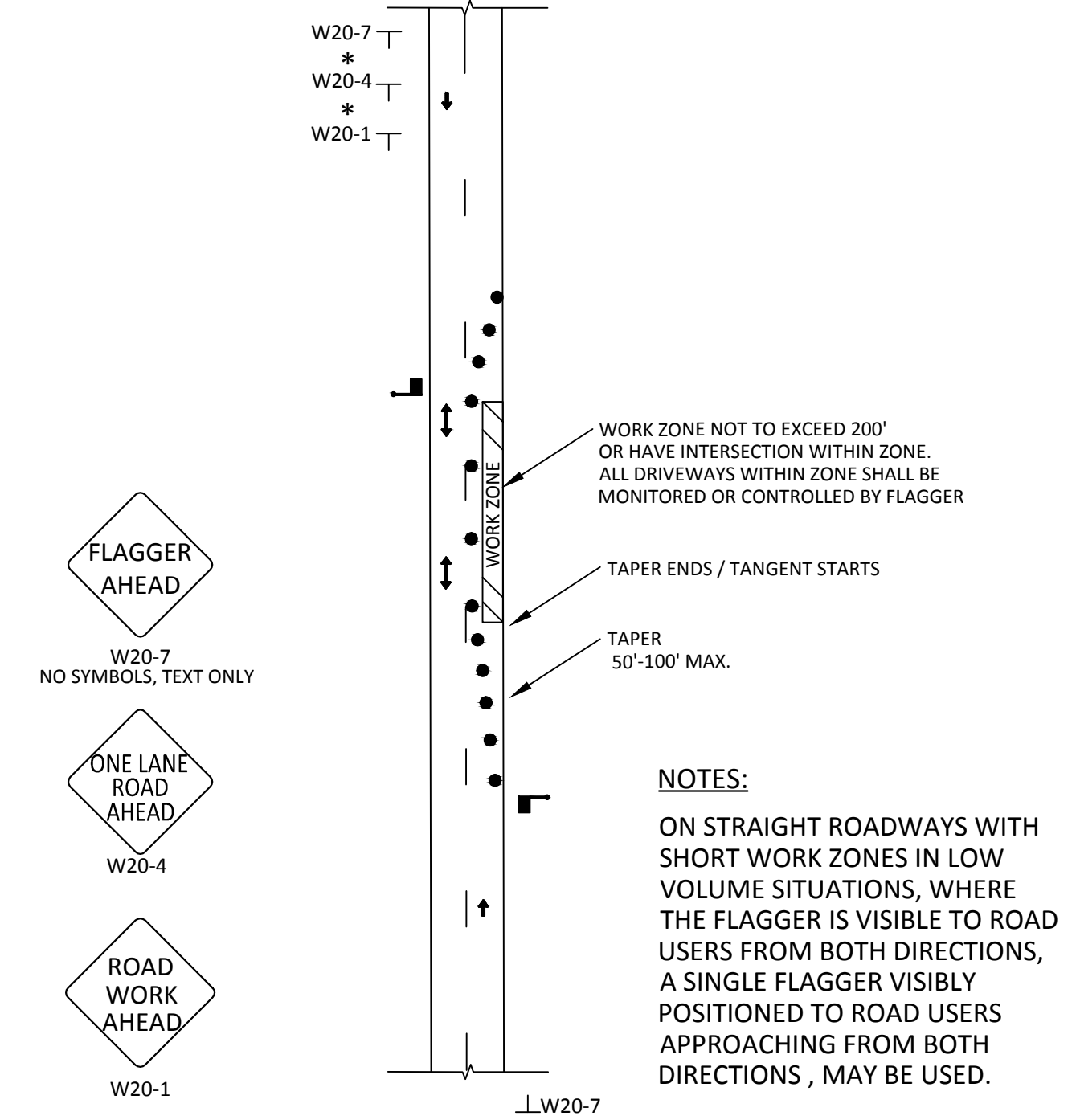
PROJECT NAME



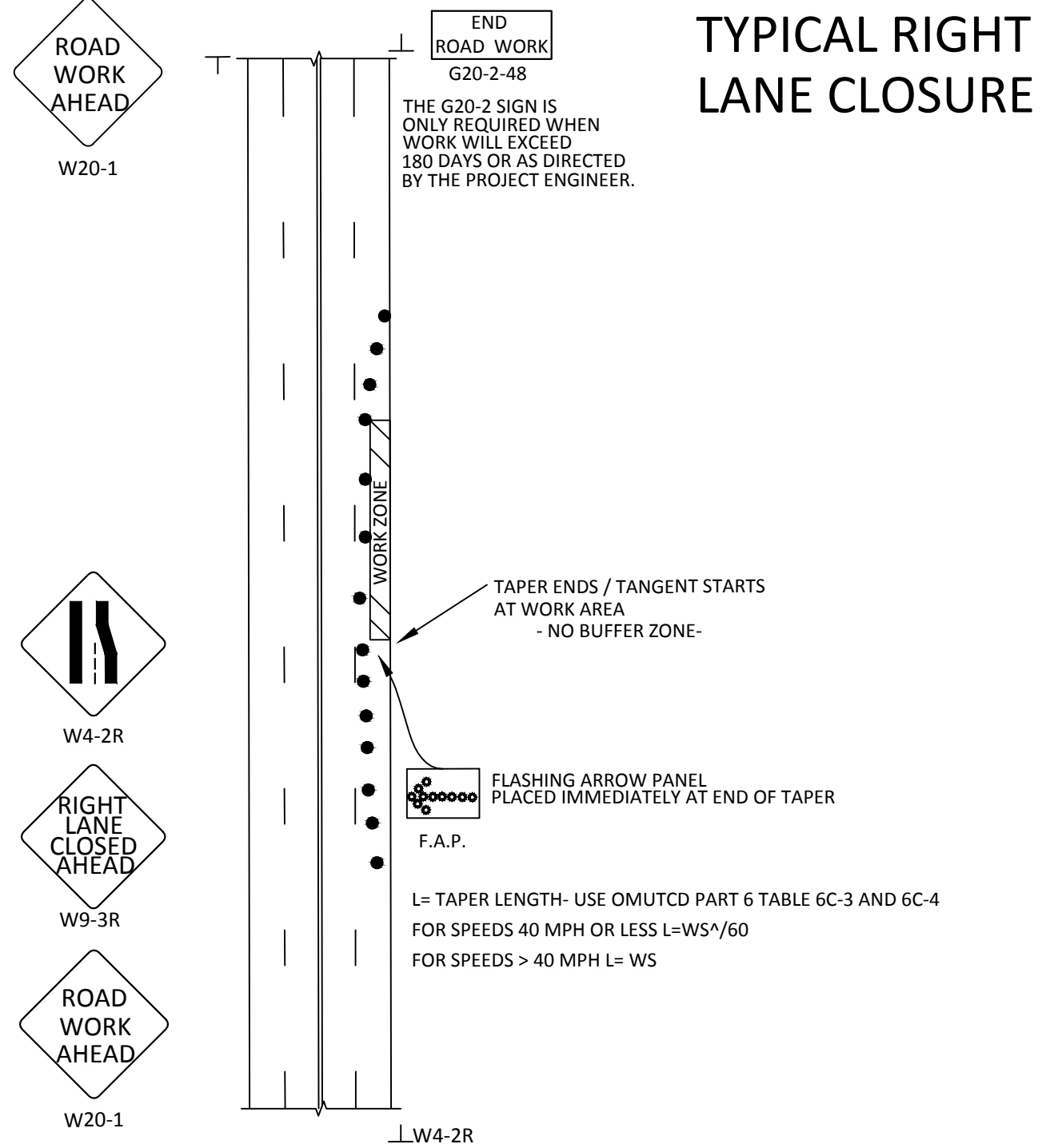
TYPICAL SIDESTREET CLOSURE



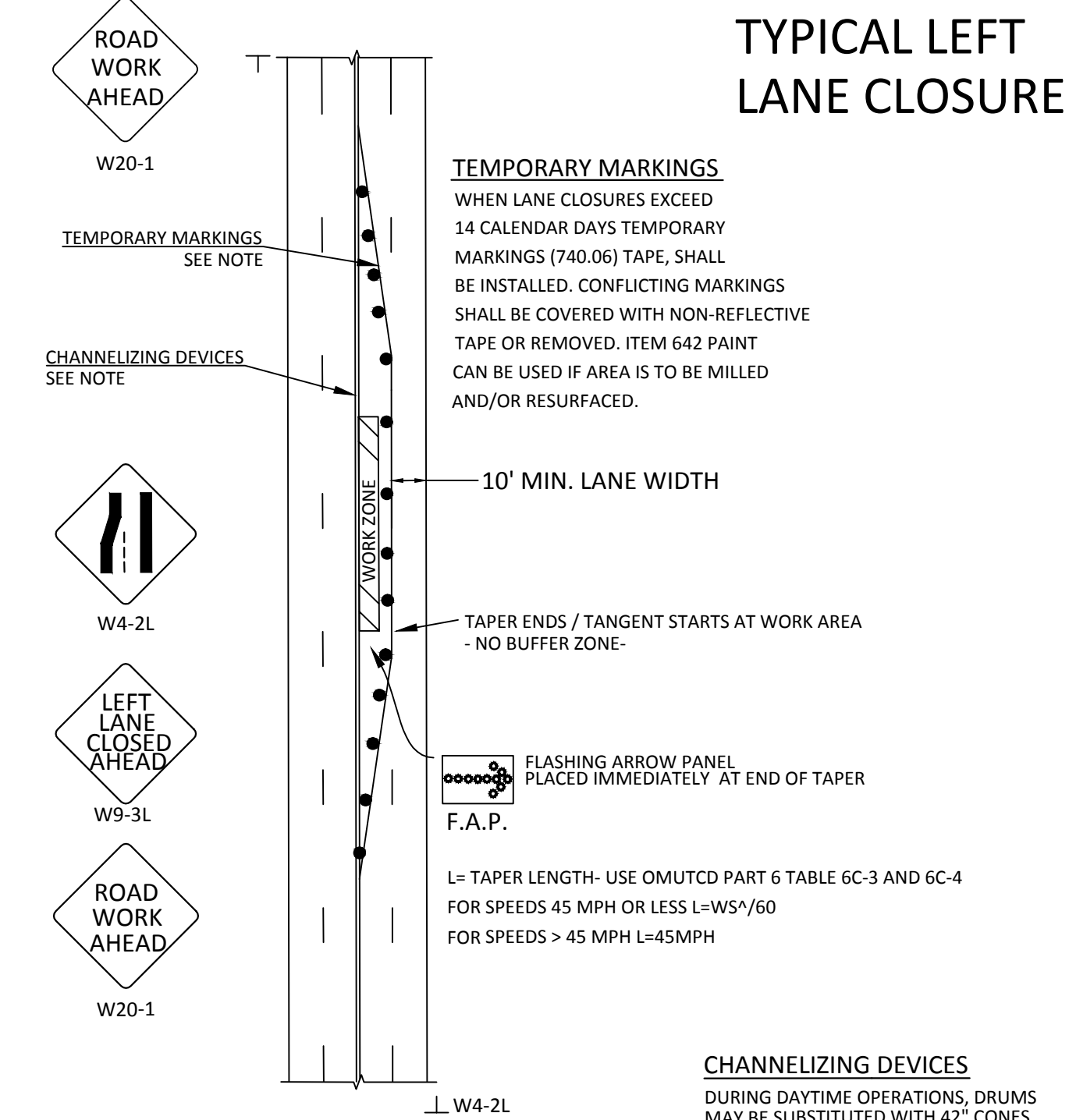
LANE CLOSURE ON TWO-LANE ROAD USING FLAGGERS



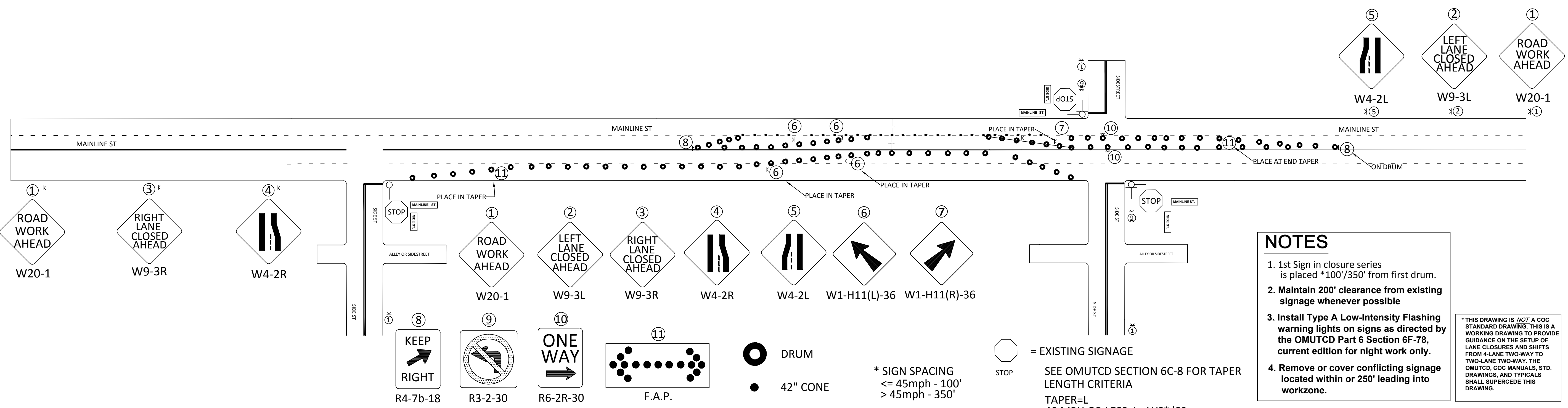
TYPICAL RIGHT LANE CLOSURE



TYPICAL LEFT LANE CLOSURE



LANE SHIFT- 4 LANE SECTION



NOTES

- 1st sign in closure series is placed *100'/350' from first drum.
 - Maintain 200' clearance from existing signage whenever possible.
 - Install Type A Low-Intensity Flashing warning lights on signs as directed by the OMUTCD Part 6 Section 6F-78, current edition for night work only.
 - Remove or cover conflicting signage located within or 250' leading into workzone.
- * THIS DRAWING IS NOT A COC STANDARD DRAWING. THIS IS A WORKING DRAWING TO PROVIDE GUIDANCE ON THE SETUP OF LANE CLOSURES AND SHIFTS FROM 4-LANE TWO-WAY TO TWO-LANE TWO-WAY. THE OMUTCD, COC MANUALS, STD. DRAWINGS, AND TYPICALS SHALL SUPERCEDE THIS DRAWING.

REVISED 7/11/14

XXXX-E