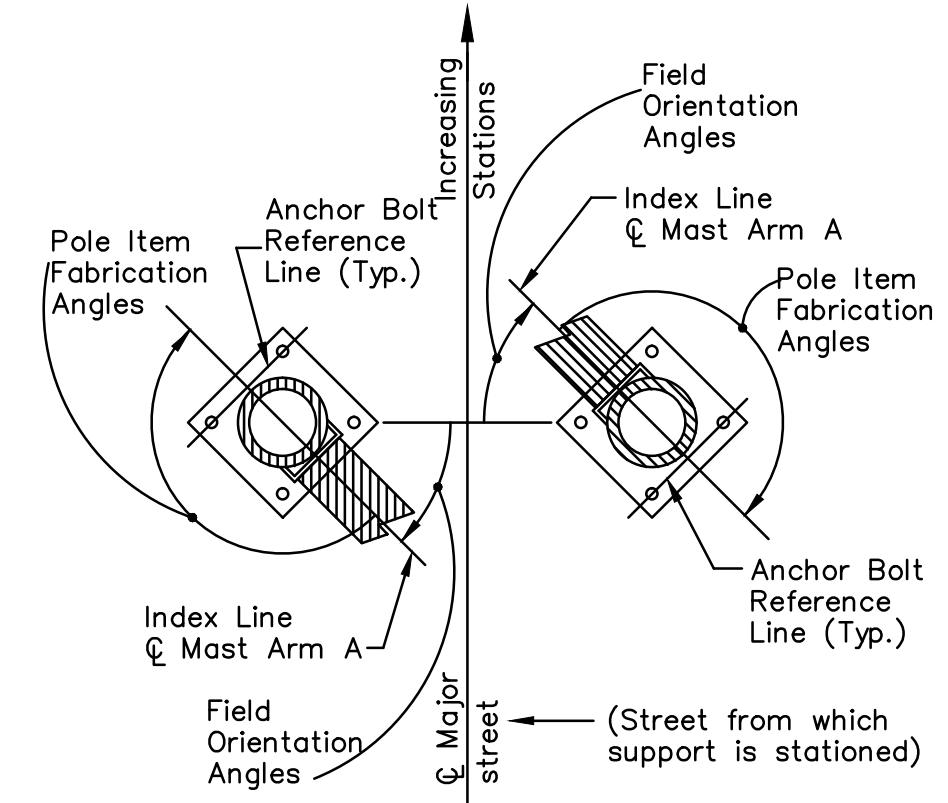
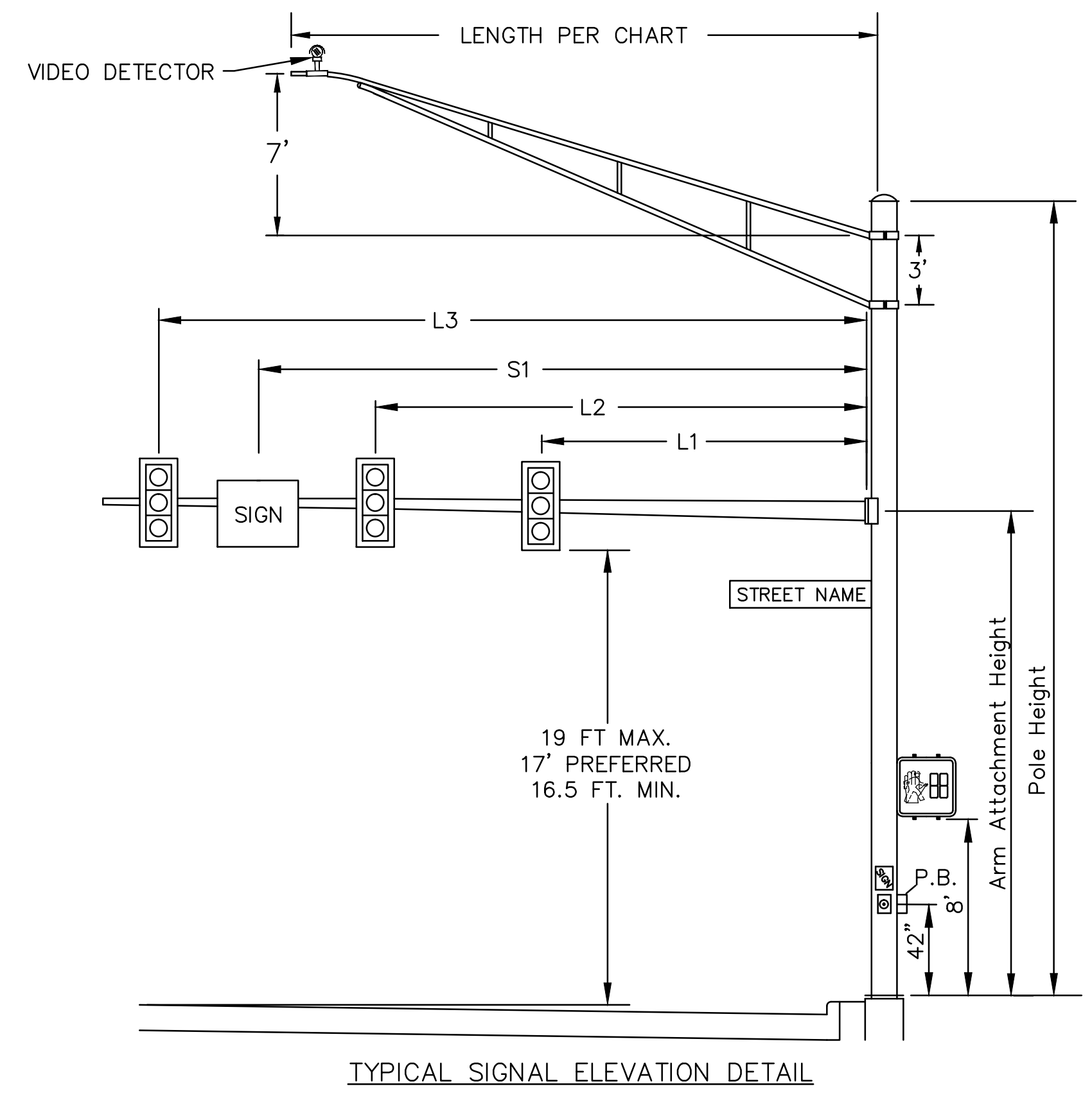


INTERSECTION	SHEET NO.	SUPPORT DESIGNATION	POLE COLOR	POLE DESIGN NO.	POLE HT. (FT.)	ARM LENGTH		OBJECT ATTACHMENT HEIGHT			DISTANCE FROM BUTT PLATE (FT.)			POLE FABRICATION DATA—CLOCKWISE FROM MAST ARM A AT 0 DEGREES						FIELD ORIENTATION			
						MASTARM (FT.)	VIDEO BRACKET ARM	MASTARM (FT.)	VIDEO BRACKET ARM	VIDEO DETECTOR MOUNTING HEIGHT	L1	L2	S1	VIDEO DETECTION CAMERA	ANCHOR BOLT REFERENCE LINE	PED. SIGNALS	PED. PUSH BUTTON	VIDEO BRACKET ARM	STREET NAME SIGNS	HANDHOLE	INDEX LINE ANGLE MAST ARM A	ANCHOR BOLT REF. LINE	FOUNDATION ELEVATION*
STREET A AT STREET C	##	S/E-1	Black	4	27'	32'	25'	21.5'	26'	33'	12.5'	23.5'	-	24'	90°	264°	255°	0°	0°/270°	180°	0°	90°	723.87
		S/E-2	Black	Pedestal	10.7'	-	-	-	-	-	-	-	-	-	90°	344°	-	-	-	180°	18°	108°	723.61
		S/W-1	Black	4	27'	32.5'	25'	21.5'	26'	33'	14'	24'	-	24'	90°	264°	-	0°	-	180°	90°	0°	723.62
		S/W-2	Black	Pedestal	10.7'	-	-	-	-	-	-	-	-	-	90°	347°	0°	-	-	180°	106°	16°	724.24
		N/W-1	Black	4	27'	32.5'	25'	21.5'	26'	33'	13'	24'	-	24'	90°	264°	257°	0°	0°/270°	180°	0°	90°	724.55
		N/W-2	Black	Pedestal	10.7'	-	-	-	-	-	-	-	-	-	90°	355°	-	-	-	180°	15°	105°	724.73
		N/E-1	Black	14	27'	50.5'	30'	21.5'	26'	33'	32'	42'	-	29'	90°	8°	5°	0°	-	180°	90°	0°	723.88
		N/E-2	Black	Pedestal	10.7'	-	-	-	-	-	-	-	-	-	90°	285°	-	-	-	180°	75°	165°	724.37



All angles measured clockwise.
 Base plate is oriented square to Mast Arm A.
 Mast Arm A is the largest arm if the support has two mast arms.

TYPICAL SIGNAL SUPPORT ORIENTATION DETAIL



TYPICAL SIGNAL ELEVATION DETAIL

CALCULATED SCALE
 XXX
 CHECKED XXX

POLE FABRICATION AND ORIENTATION DETAILS

PROJECT NAME

XXXX E