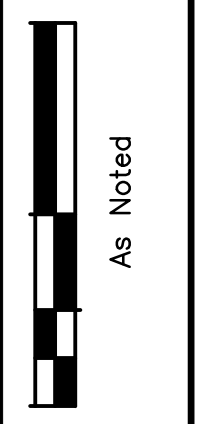


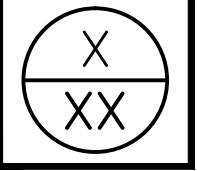
HORIZ. SCALE



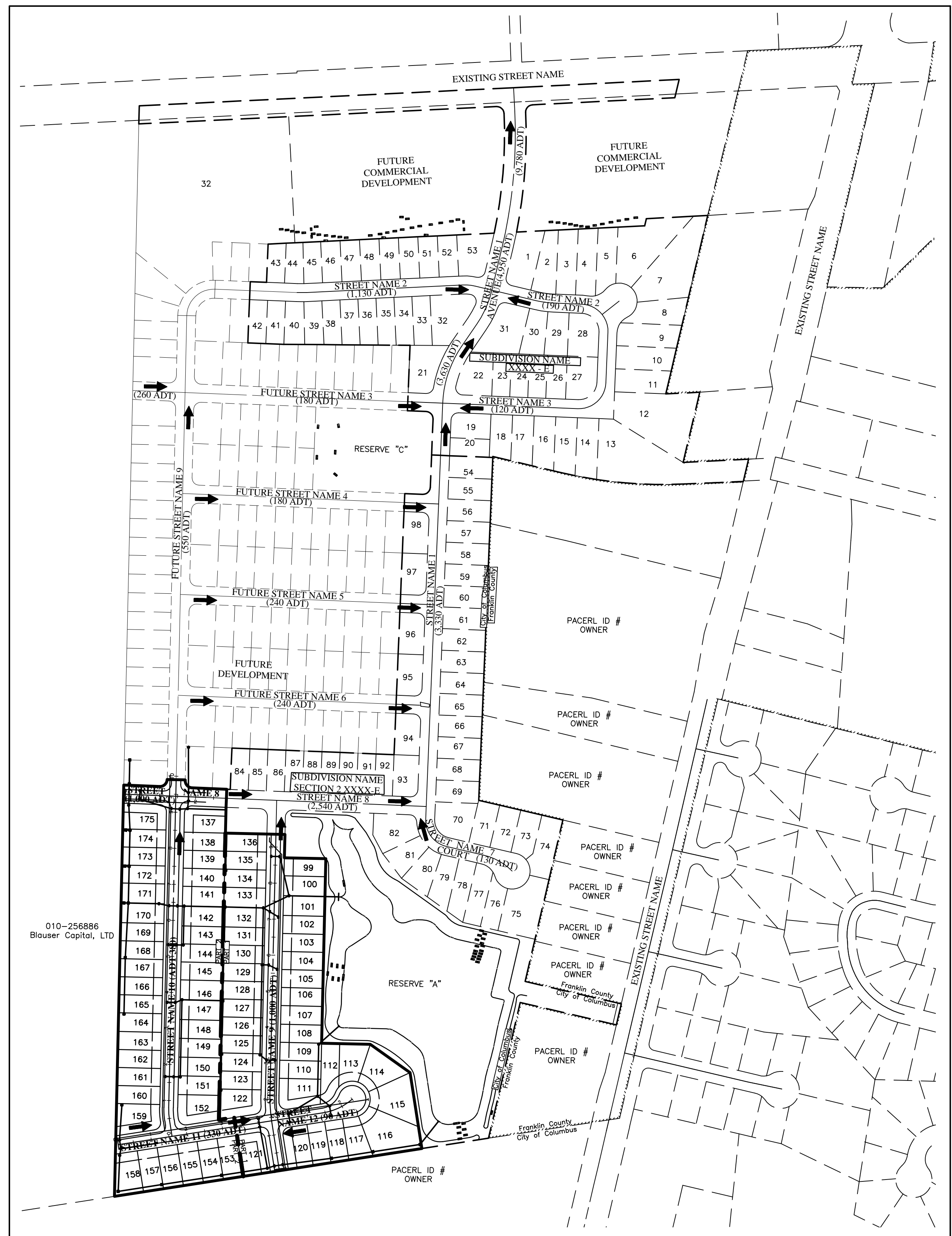
As Noted
CALCULATED
CHECKED

ADT EXHIBIT
TYPICAL SECTION

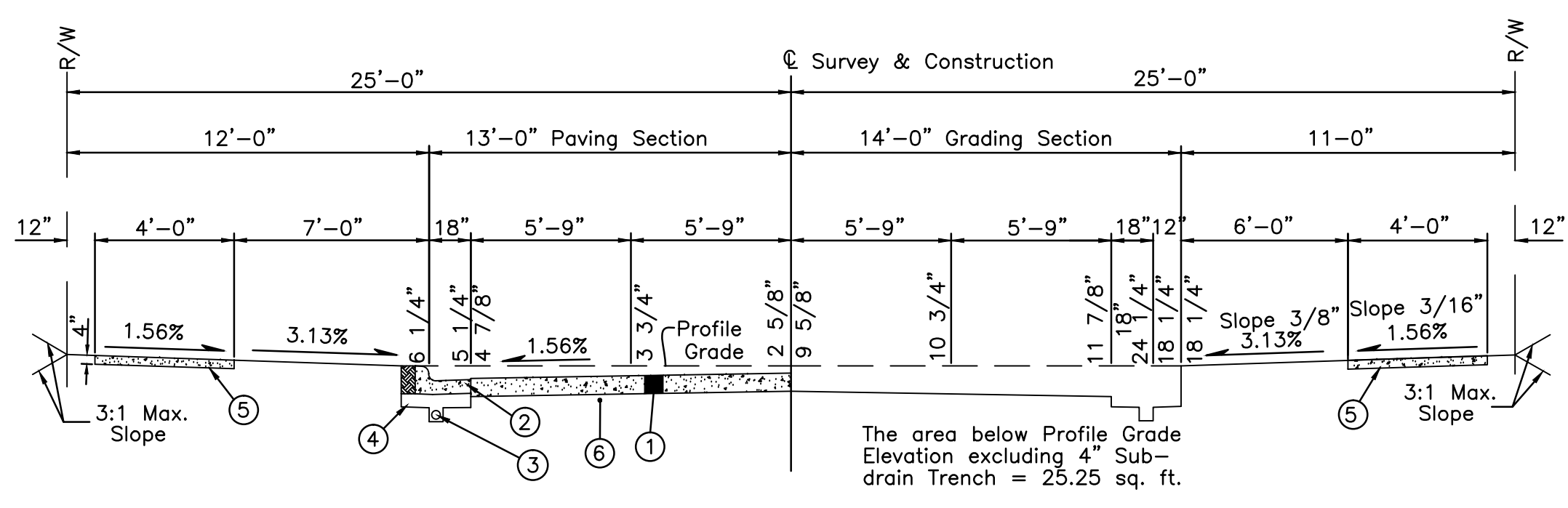
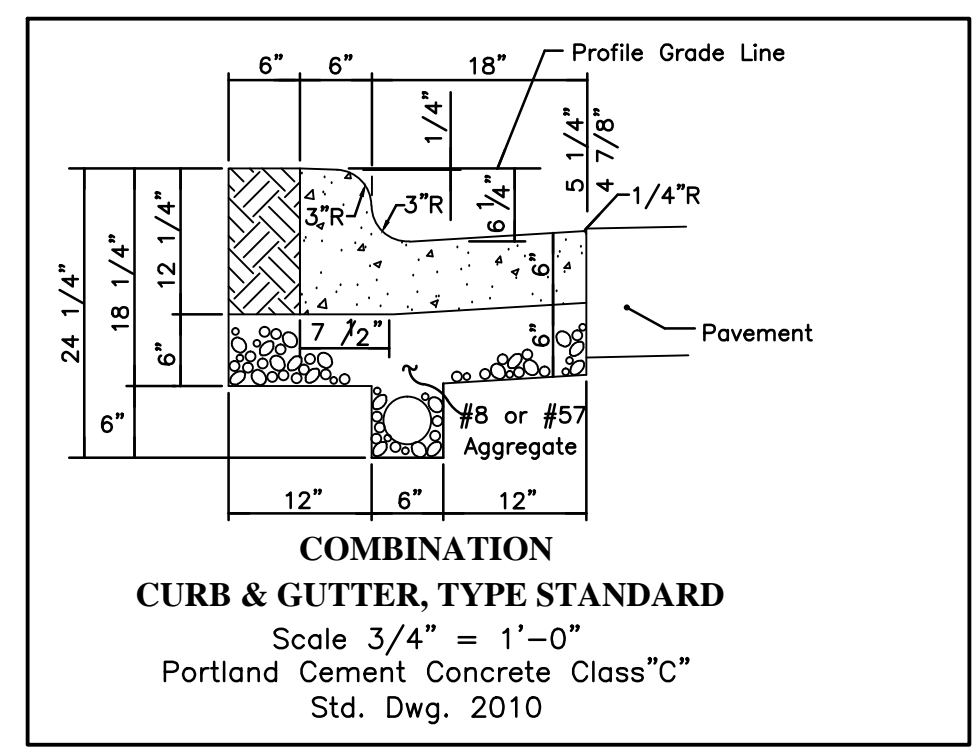
PROJECT NAME



Revised 6/25/14



ADT EXHIBIT
Scale 1" = 200'



TYPICAL 26' SECTION (50' R/W) W/ COMBINATION CURB & GUTTER
Scale 1" = 5'

STREET NAME 8 (1,000 ADT) (725 SY) @ STA 0+00.00 to 2+85.50	STREET NAME 9 (1,000 ADT) (2,535 SY) @ STA 0+00.00 to 9+38.53
STREET NAME 12 (90 ADT) (950 SY) @ STA 0+00.00 to 2+72.82	STREET NAME 10 (380 ADT) (2,280 SY) @ STA 0+00.00 to 9+10.91 @ STA 9+78.13 to 9+90.34
STREET NAME 11 (330 ADT) (PART 1 - 180 SY, PART 2 - 925 SY) @ STA 0+00.00 to 4+38.08	

PAVEMENT LEGEND (STANDARD CONCRETE PAVEMENT)

- ① Item 452 7" Non-Reinforced Portland Cement Concrete Pavement
- ② Item 609 Combination Curb & Gutter, Type Standard
- ③ Item 605 4" Underdrain
- ④ No. 8 or No. 57 Aggregate. (Also used for replacement work)
- ⑤ Item 608 4" Concrete Sidewalk
- ⑥ Item 204 Compacted Subgrade

NOTE TO CONSULTANTS

Refer to City of Columbus
Pavement Design Policies and
Standard Drawings for pavement
design.