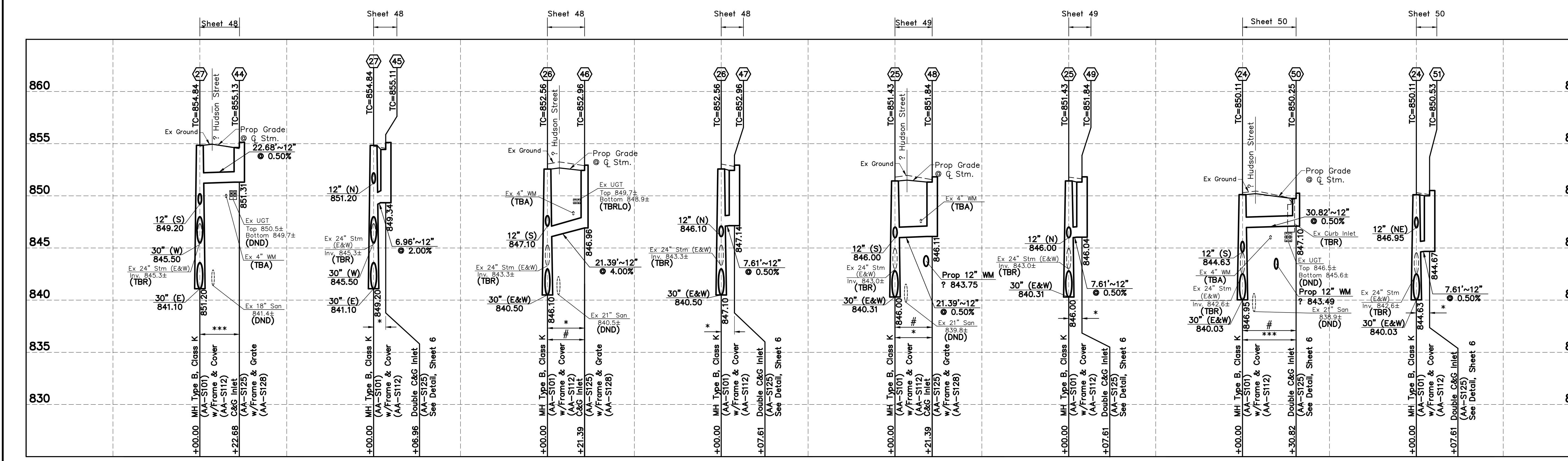
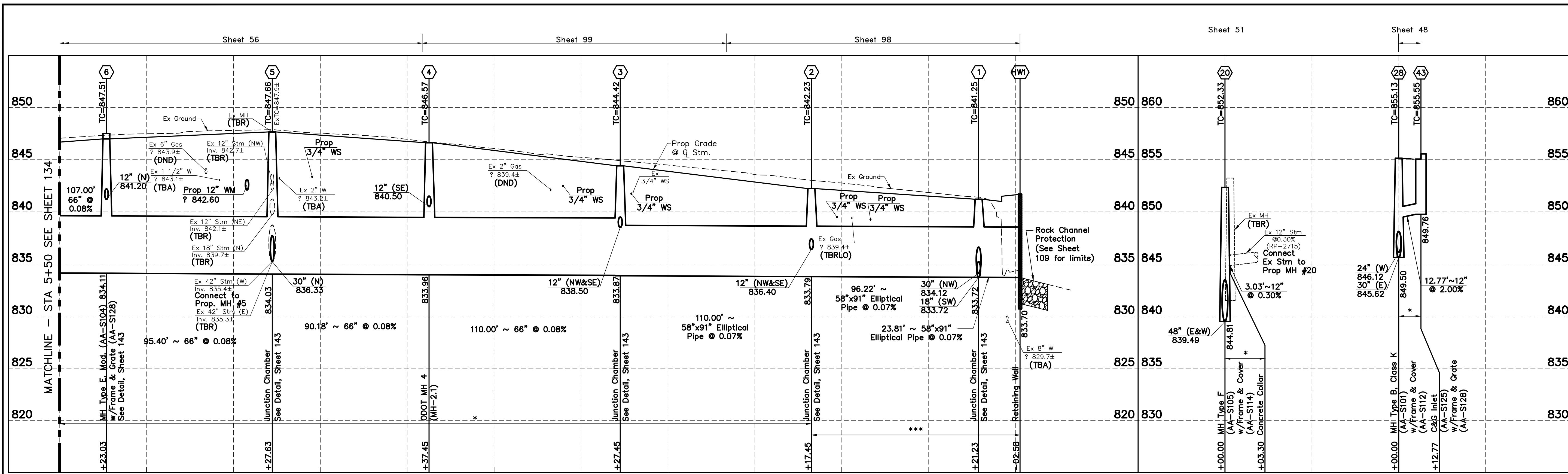


REVISED 12/2/11



NOTE: For Curb & Gutter Inlets, TC = Top of Curb = Top of Casting

- * Compacted Granular Backfill Per Item 912
- ** Backfill Per Item 911
- *** Concrete Encasement Per Item 910
- # Watertight joints per 901.15 and place trench dams per 901.11

HORIZ. SCALE: 1" = 30'

VERTICAL SCALE: 1" = 5'

CALCULATED

CHECKED

STORM SEWER PROFILES

PROJECT NAME

XXXX-E