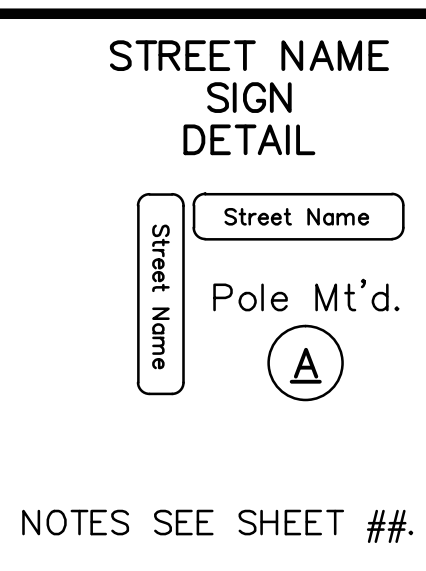
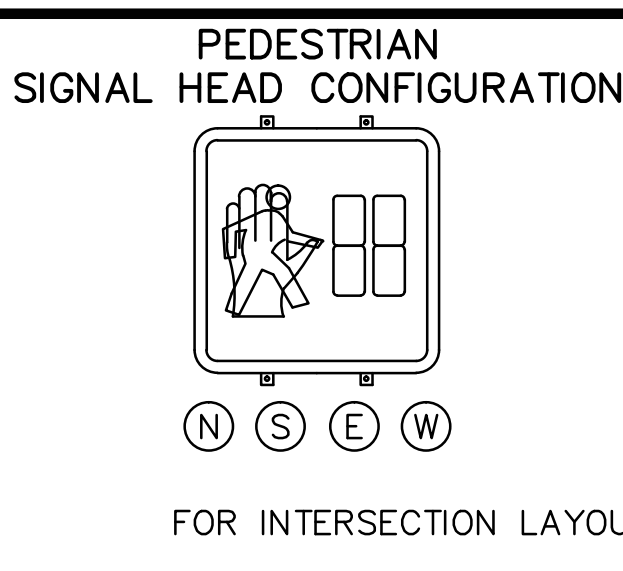
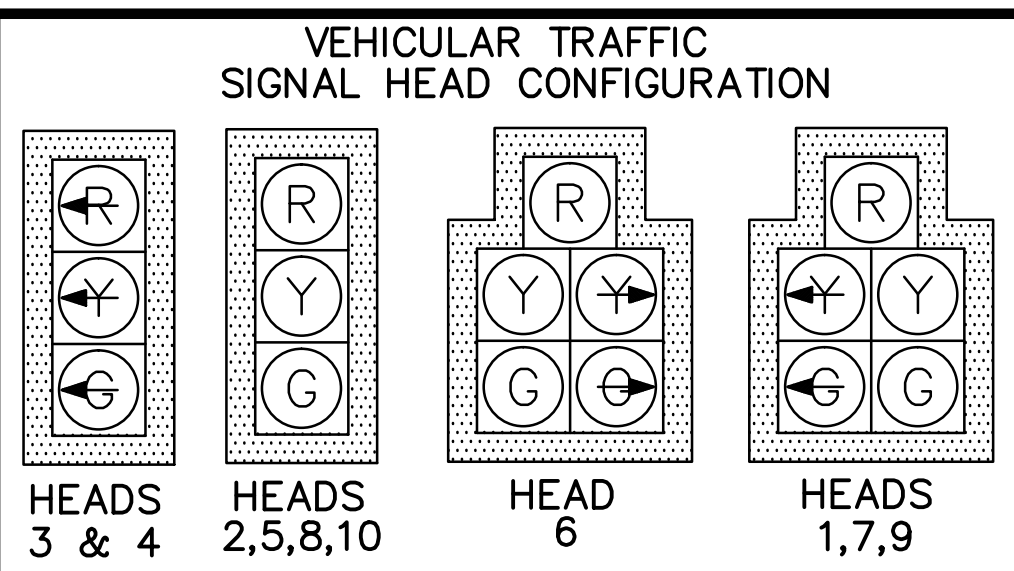


TRAFFIC SIGNAL INSTALLATION PLAN  
STREET A AT STREET B

PROJECT NAME

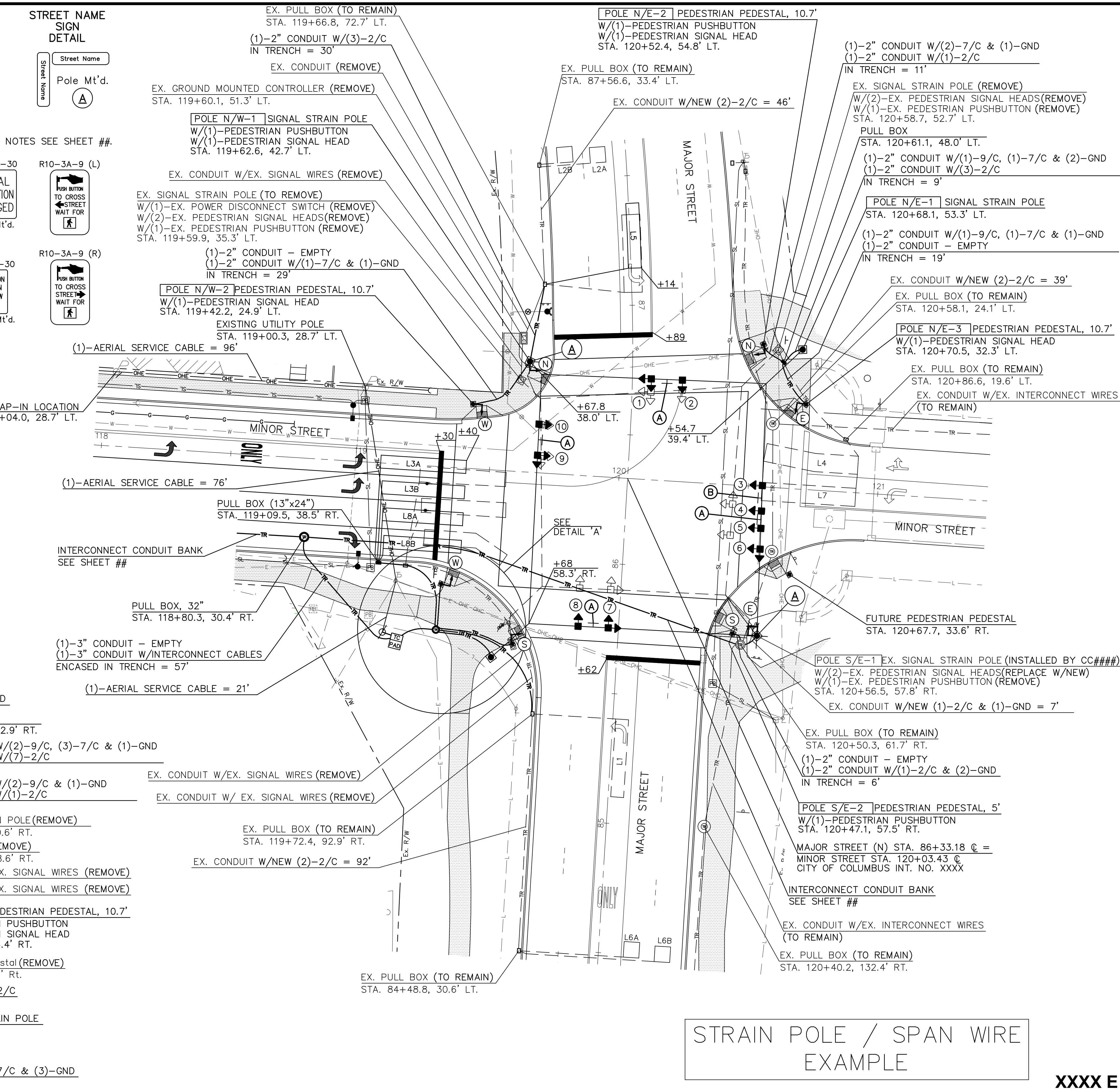
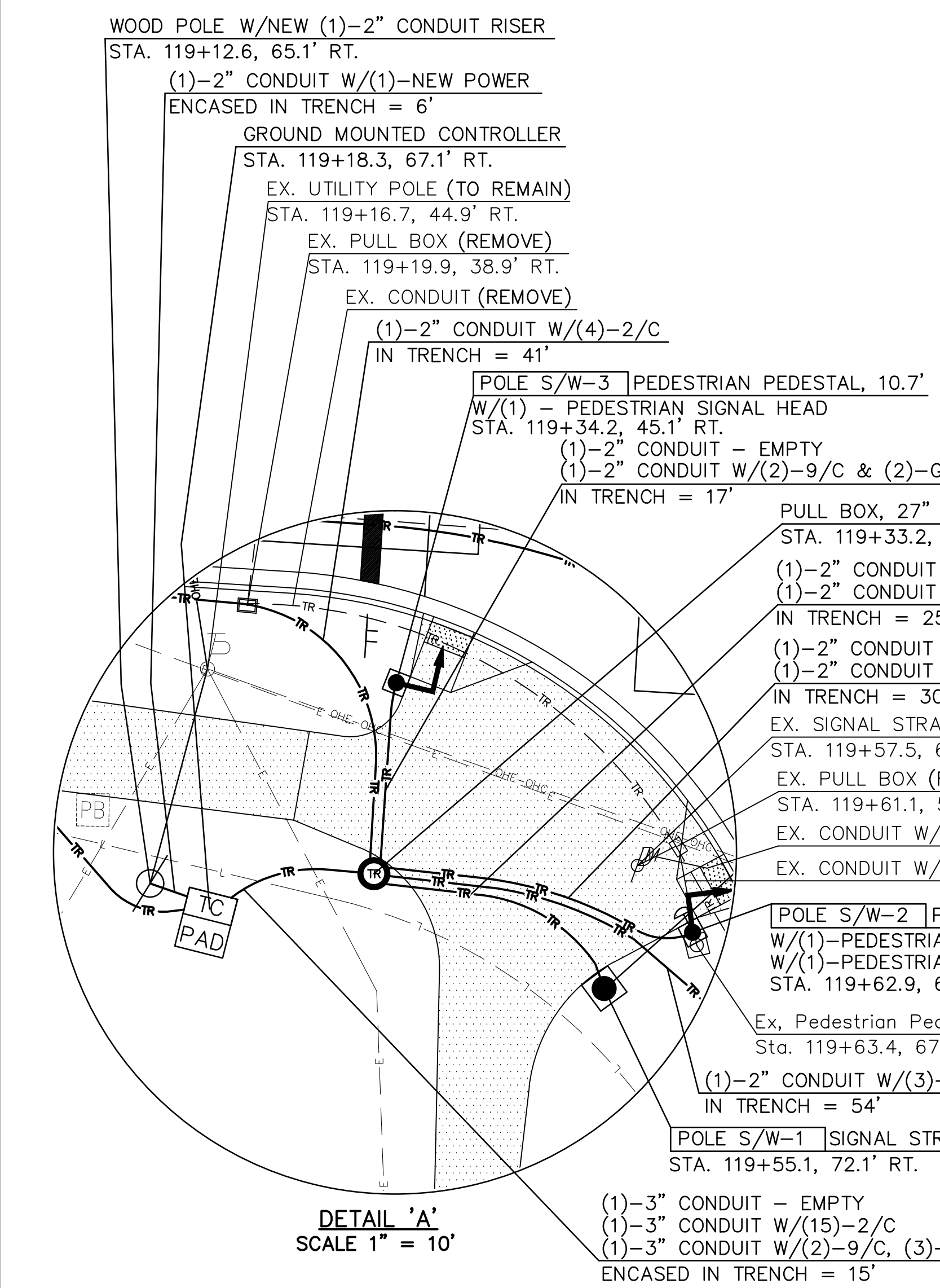
XXXX E



FOR INTERSECTION LAYOUT NOTES SEE SHEET ##.

- LEGEND**
- SIGNAL HEADS: PROP. VEHICULAR EX. VEHICULAR PROP. PEDESTRIAN EX. PEDESTRIAN
- SIGNAL POLES: PROP. ANCHOR/STRAIN POLE EX. ANCHOR/STRAIN POLE EX. EMBEDDED POLE EX. WOOD POLE GUY ANCHOR PROP. PEDESTAL EX. PEDESTAL PUSHBUTTON
- EX. MASTARM
- PROP. MASTARM
- CONTROLLERS & CABINETS: EX. CABINET W/PAD PROP. CABINET W/PAD EX. CABINET (NO PAD) PROP. CABINET (NO PAD)
- PULL BOXES: EX. PULL BOX PROP. PULL BOX
- DETECTION: FLOW MONITOR MICROWAVE RADAR VIDEO CAMERA VIDEO ZONE LOOP DETECTOR
- MISCELLANEOUS: REDLIGHT CAMERA REDLIGHT FLASH

- W3-H10-30  
SIGNAL OPERATION CHANGED  
Span Mt'd.  
(A)
- R10-3A-9 (L)  
PUSH BUTTON TO CROSS STREET WAIT FOR  
(A)
- R10-5-30  
LEFT ON GREEN ARROW ONLY  
Span Mt'd.  
(B)
- R10-3A-9 (R)  
PUSH BUTTON TO CROSS STREET WAIT FOR  
(A)



STRAIN POLE / SPAN WIRE  
EXAMPLE

REVISED 4/11/14