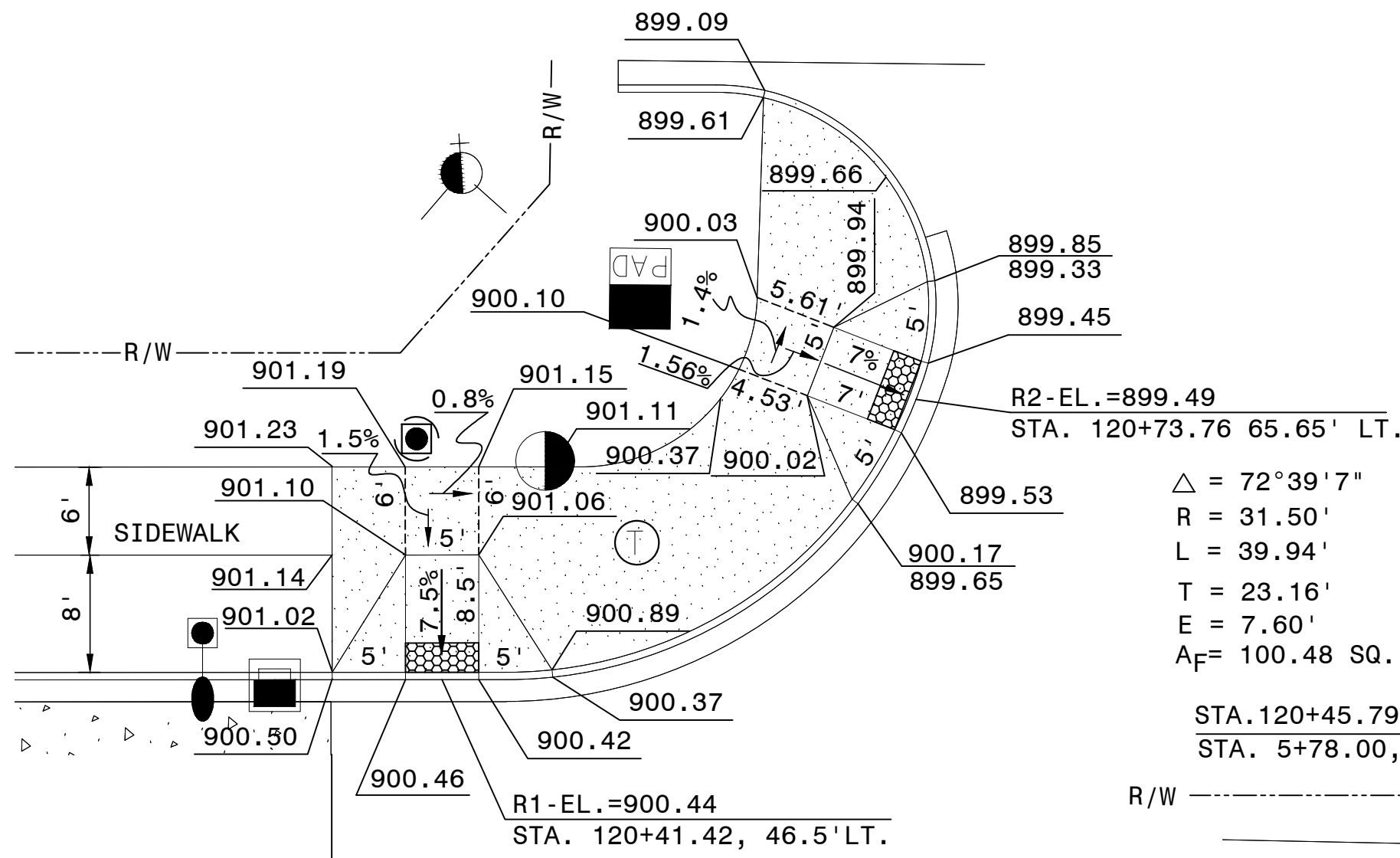


NOTES:  
1. \*\* CENTERLINE OF RAMP SHALL BE SET WITH STATION/OFFSET; PROJECT LINE PERPENDICULAR TO CENTERLINE OF ROAD TO ARRIVE AT THE RAMP CENTERLINE STATION.  
2. 8" WALK SHALL BE PLACED AT THE INTERSECTIONS OF ARTERIAL ROADWAYS PER STD DWG 2303



$\Delta = 54^{\circ}15'55''$      $\Delta = 53^{\circ}00'16''$   
R = 16.50'    R = 15.00'  
L = 15.63'    L = 14.00'  
T = 8.46'    T = 7.48'  
E = 2.04'    E = 1.76'  
A<sub>F</sub> = 10.59 SQ. FT.    A<sub>F</sub> = 8.12 SQ. FT.

$\Delta = 47^{\circ}09'48''$      $\Delta = 69^{\circ}35'57''$   
R = 15.00'    R = 16.50'  
L = 12.48'    L = 20.04'  
T = 6.55'    T = 11.47'  
E = 1.36'    E = 3.59'  
A<sub>F</sub> = 5.59 SQ. FT.    A<sub>F</sub> = 23.56 SQ. FT.

$\Delta = 72^{\circ}39'7''$   
R = 31.50'  
L = 39.94'  
T = 23.16'  
E = 7.60'  
A<sub>F</sub> = 100.48 SQ. FT.

$\Delta = 62^{\circ}40'53''$   
R = 31.50'  
L = 34.46'  
T = 19.18'  
E = 5.38'  
A<sub>F</sub> = 61.50' SQ. FT.

STA. 120+45.79, 76.50' LT.  
STA. 5+78.00, 71.56' LT.

STA. 121+76.05, 69.0' LT.  
STA. 5+73.23, 57.07' RT.

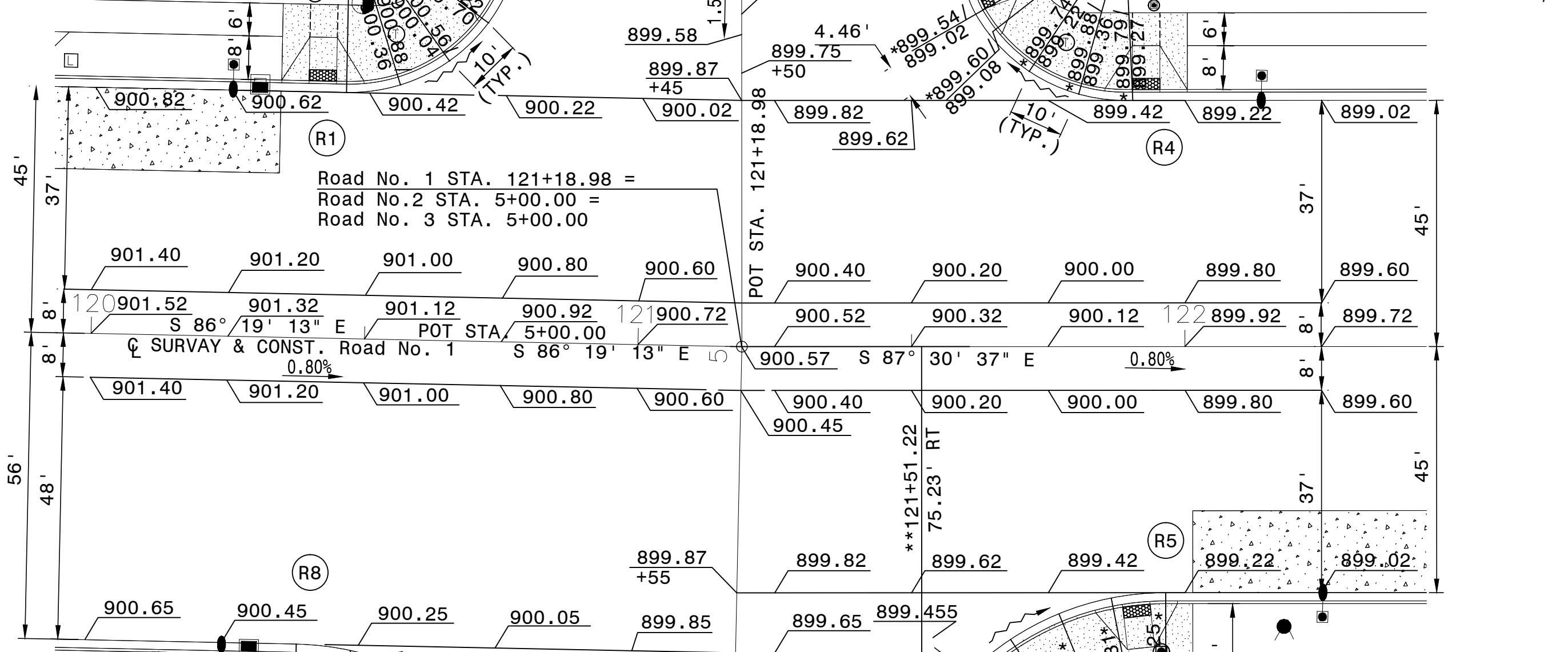
R3-EL. = 898.92  
STA. 121+61.93, 63.92' LT.

R4-EL. = 899.23  
STA. 121+92.93, 46.5' LT.

SCALE 1" = 10'

SCALE 1" = 10'

\*\* FINAL FOUNDATION ELEVATION DETERMINED BY SIDEWALK PLACEMENT. SEE DETAIL ON SHEET 252.



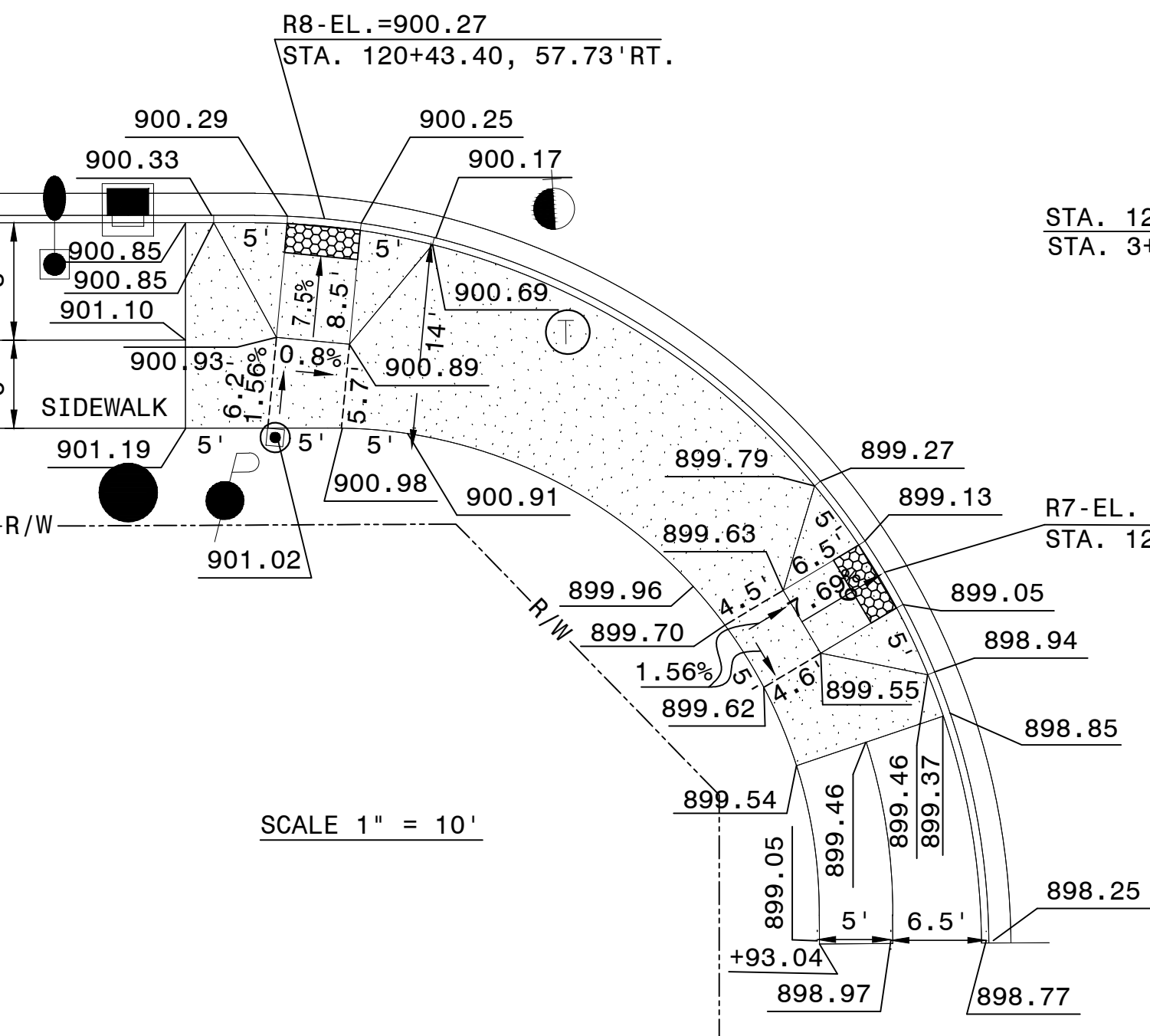
Road No. 1 STA. 121+18.98 =  
Road No. 2 STA. 5+00.00 =  
Road No. 3 STA. 5+00.00

STA. 120+38.65, 107.5' RT.  
STA. 3+92.50, 80.33' LT.  
 $\Delta = 89^{\circ}34'04''$   
R = 51.50'  
L = 80.51'  
T = 51.11'  
E = 21.06'  
A<sub>F</sub> = 559.25 SQ. FT.

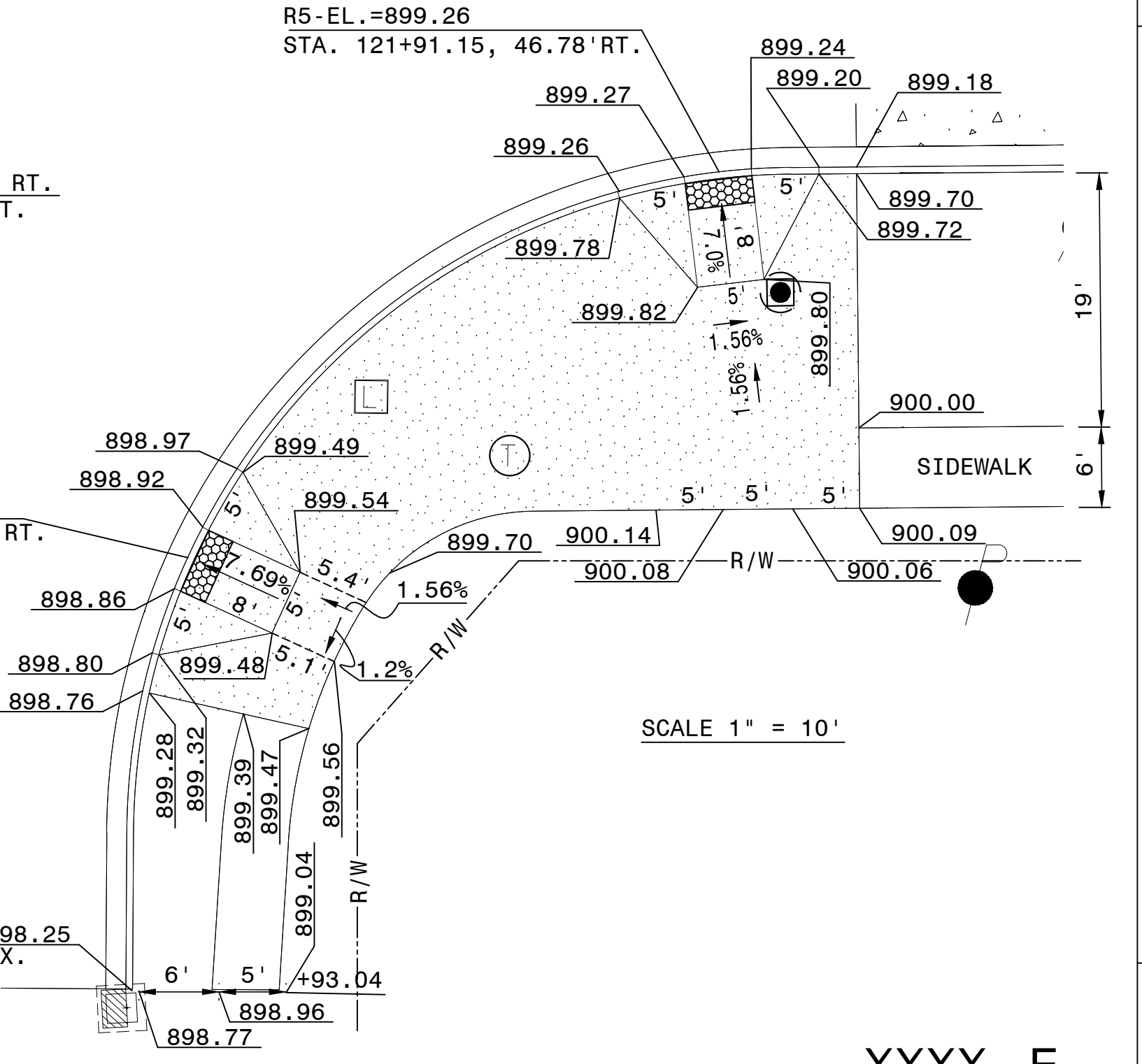
$\Delta = 89^{\circ}06'24''$   
R = 51.50'  
L = 80.09'  
T = 50.70'  
E = 20.77'  
A<sub>F</sub> = 548.82 SQ. FT.

Road No. 1 AT Road No. 2/Road No. 3.  
SCALE 1" = 20'

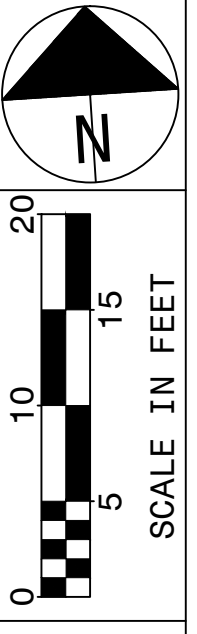
\* = TC ELEVATION/EP ELEVATION  
\* = TC ELEVATION/EP ELEVATION



SCALE 1" = 10'



SCALE 1" = 10'



INTERSECTION & CURB RAMP DETAILS

PROJECT NAME

X  
XX

XXXX - E