

A photograph of the Columbus skyline, featuring several tall skyscrapers under a clear blue sky. In the foreground, there is a green park area with a curved path and some trees. A bridge is visible in the distance.

CONNECT COLUMBUS

Building Columbus' Transportation Future

Vision and Goals Meeting
March 31, 2015



Today's Agenda

1

How We Got Here

2

Connect Columbus Process

3

What Are Others Doing?

4

Columbus' Goals

How We

Got Here

What is the Purpose of Cities?



Cities are an invention to maximize exchange (goods, culture, friendship, knowledge) and to minimize travel.

The role of transport is to maximize exchange

...David Engwicht



Transportation investments are powerful and far-reaching.

Transportation accounts for **19 percent** of spending by the average household in America - as much as for food and health care combined.



"We're gonna need roads...lots of 'em!"

What is the Purpose of Cities?



Access



Mobility

The Good Old Days



Broad and High Streets

- 
- An aerial, high-angle photograph of a city street, likely in Columbus, Ohio, showing a crowded trolley and many pedestrians. The image is dark and serves as a background for the text.
- Crowded
 - Dangerous
 - Dirty
 - Unhealthy
 - Lacking
Greenspace

Multi-Disciplinary Approach

1. Identify Problem

2. Formulate A Response

3. Implement The Solution

Identifying Last Century's Problems

Infectious Diseases

- TB
- Cholera
- Yellow Fever
- Polio

Formulating A Response

THE HARTMAN SANITARIUM, COLUMBUS, OHIO.

Great Water Cure Facilities.

CARLSBAD, NAUHEIM, KISSENGEN, VICHY, SPA.

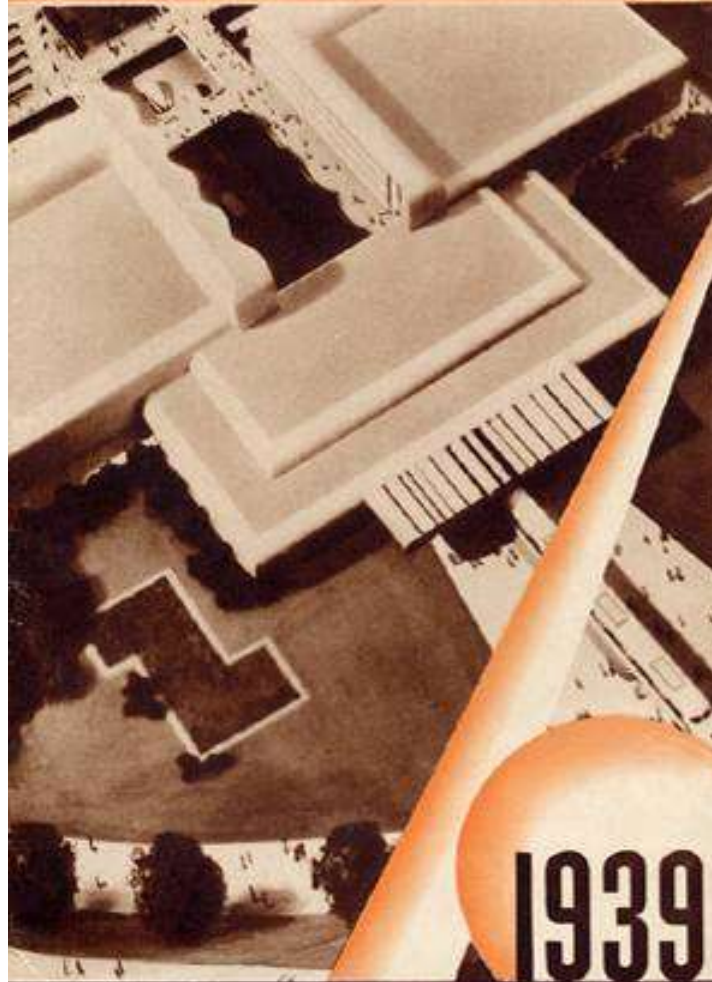
Modified, Grouped Under one Roof by the Dr. Hartman Method.

KALYBA SPRINGS SITUATED IN THE SANITARIUM.



THE HARTMAN SANITARIUM, COLUMBUS, OHIO.

THE
GENERAL MOTORS
EXHIBIT BUILDING

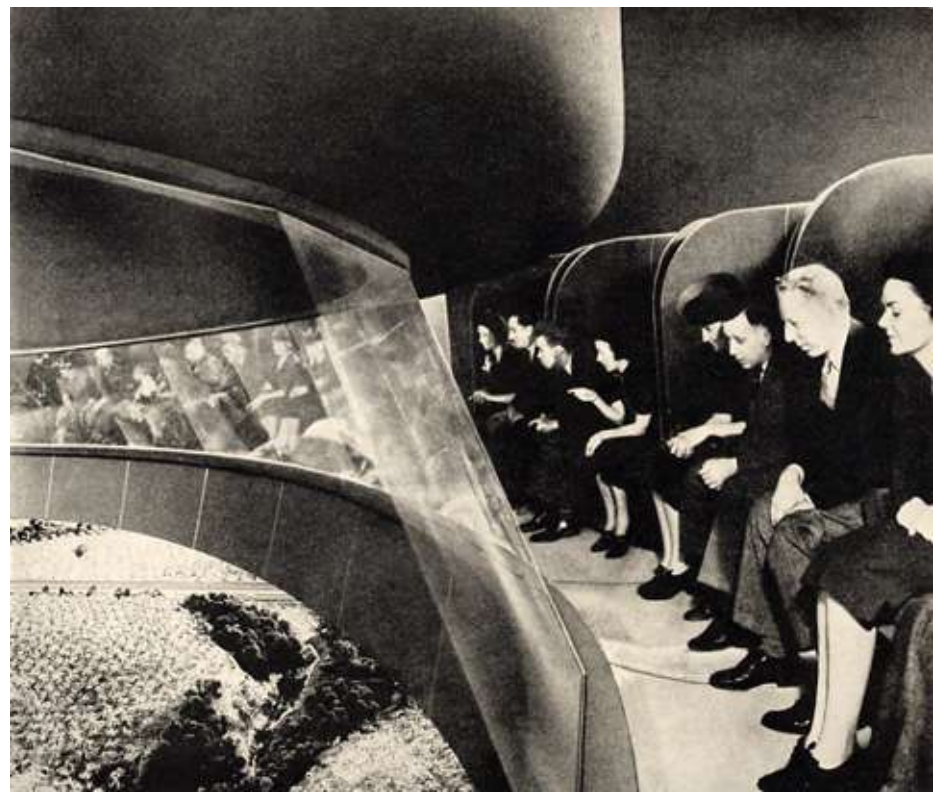
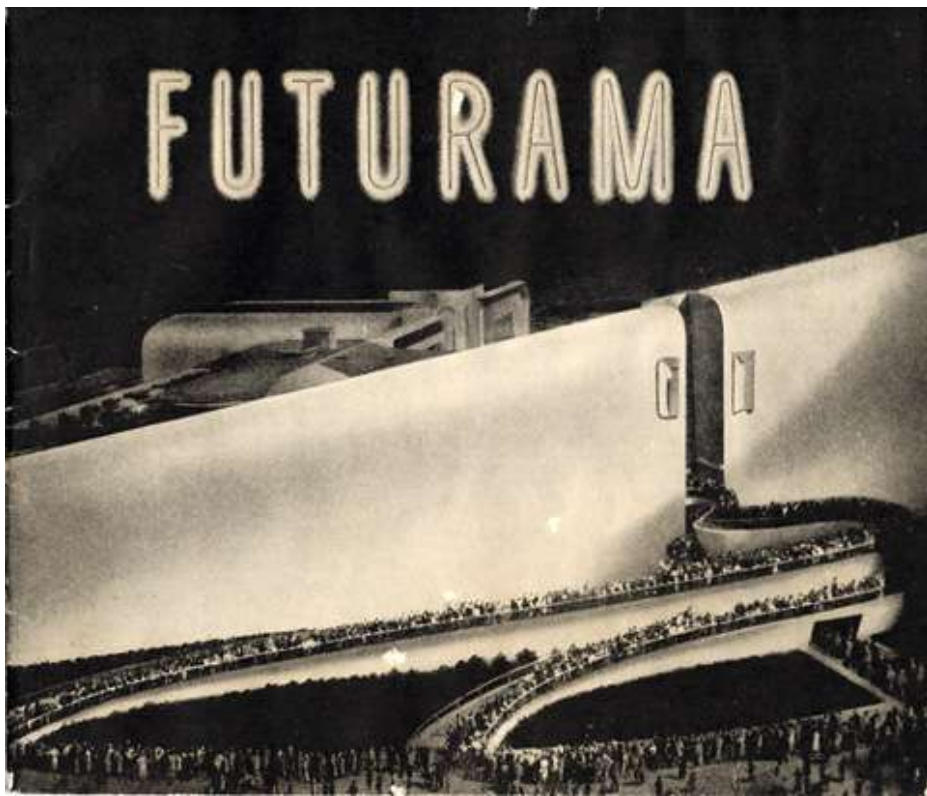


1939

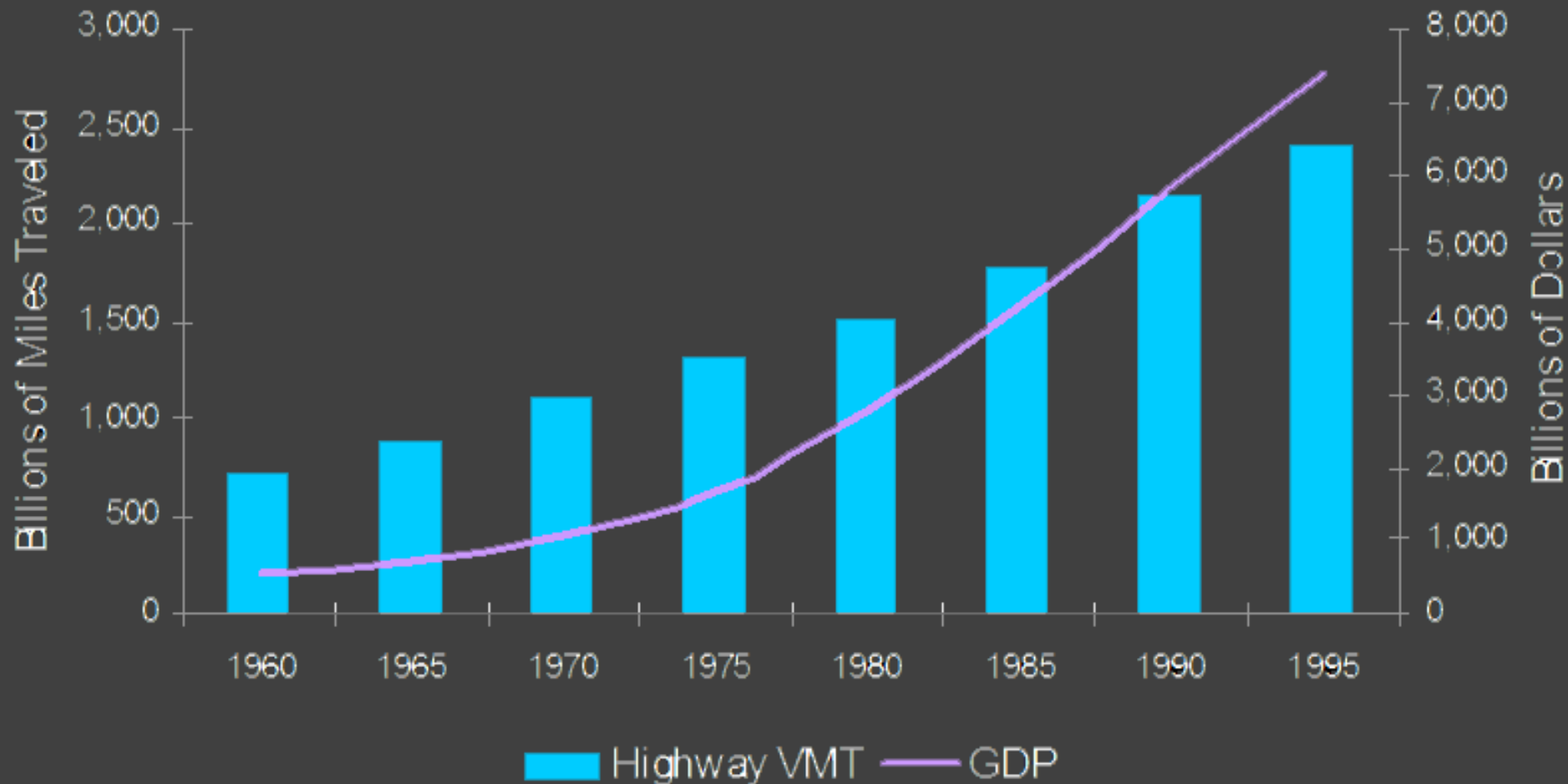
New York World's Fair
HIGHWAYS AND HORIZONS



"abundant sunshine, fresh air,
fine green parkways will blend
together seamlessly with
dazzling skyscrapers and seven-
lane highways."



Transportation's Power



Freeways Are Safe!

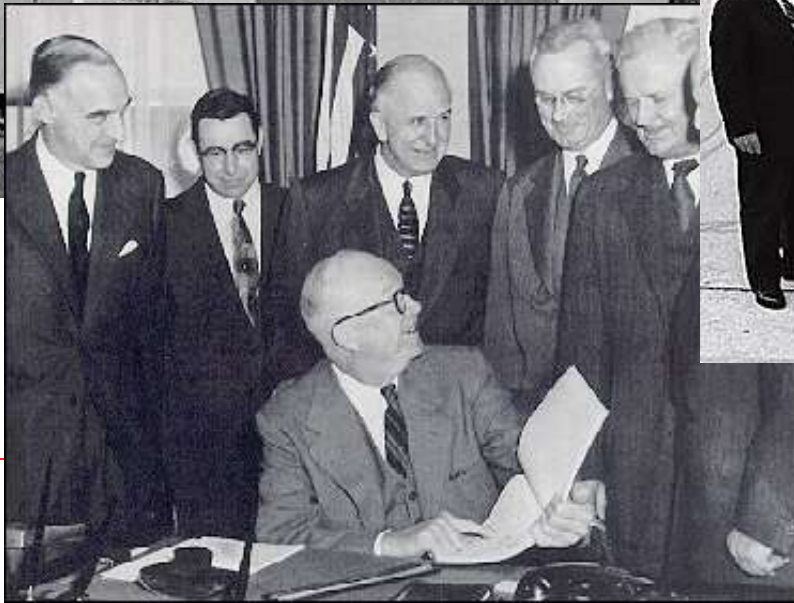
	PRINCIPAL RURAL AREAS	MINOR ARTERIAL	COLLECTOR	INTERSTATE	ALL HIGHWAYS
Vehicle Miles of Travel (Millions)	4,031.36	1,789.58	957.67	4,573.99	11,352.60
Miles of Highway	1,980.28	1,685.51	1,604.63	467.33	5,737.75
Total Collisions	3,776	2,128	1,291	2,367	9,562
Collision Rate (1)	0.94	1.19	1.35	0.52	0.84

Implement The Solution

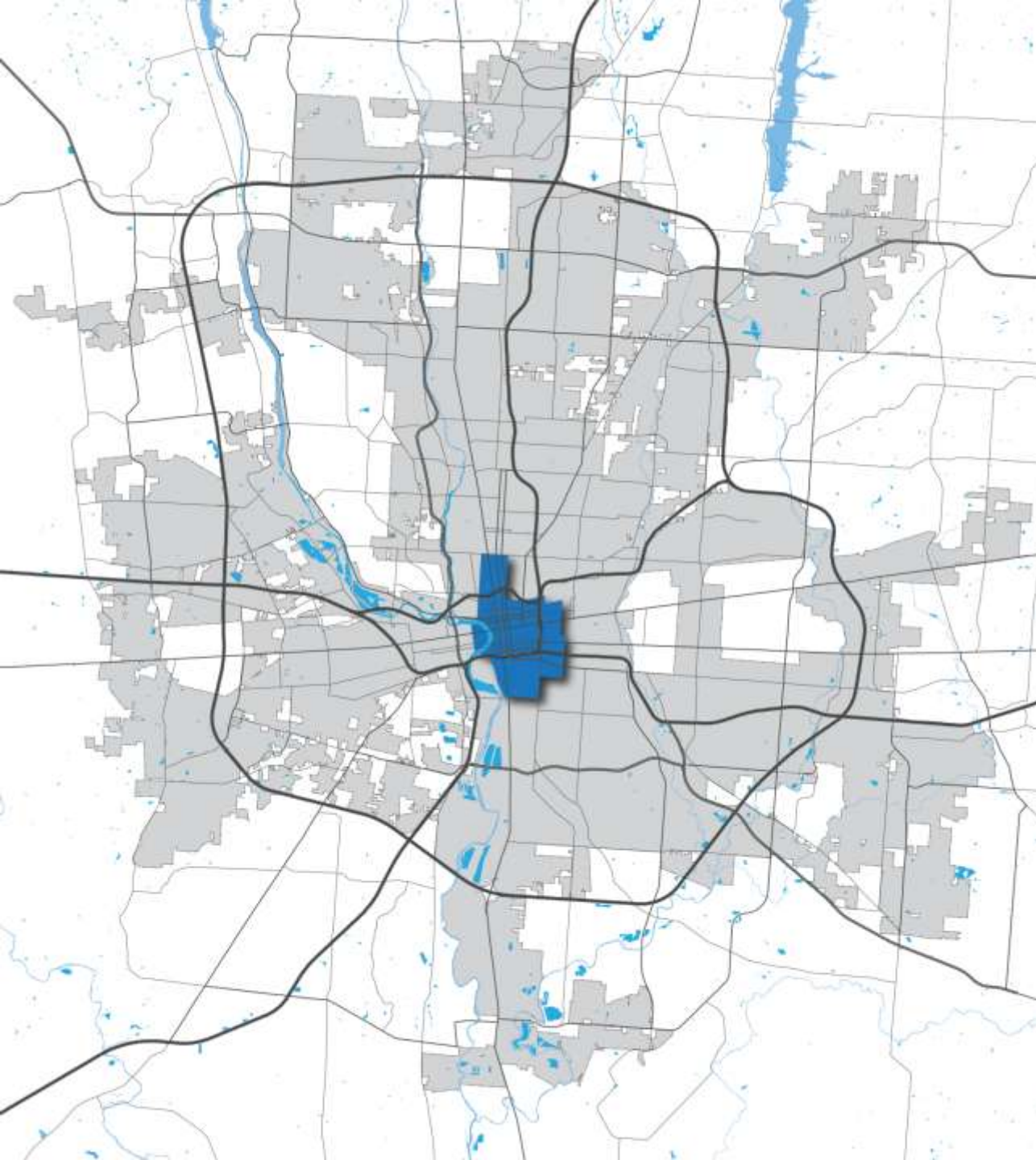


Federal Transportation Policy 1956-1982

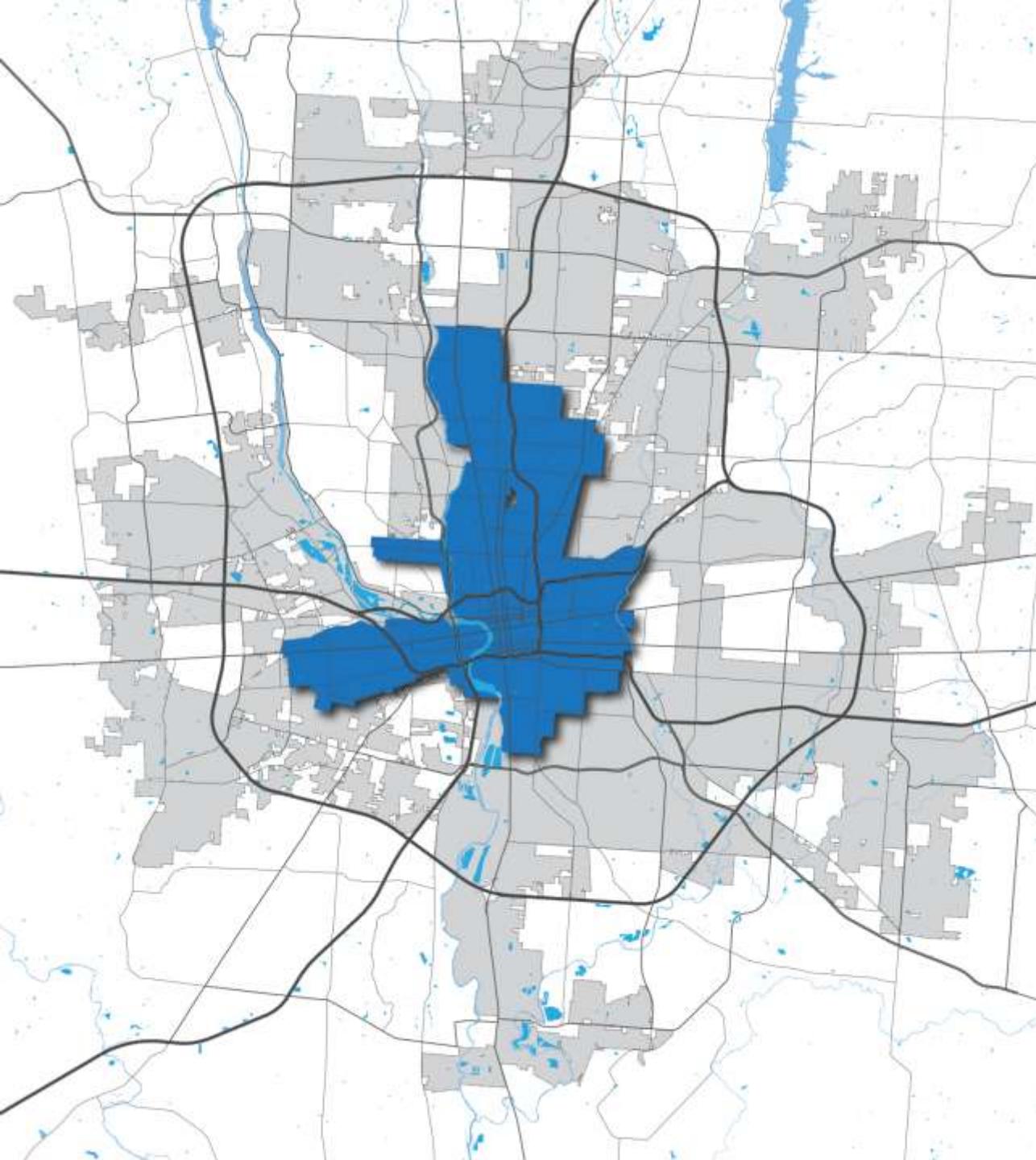
Federal Aid Highway Act of 1956



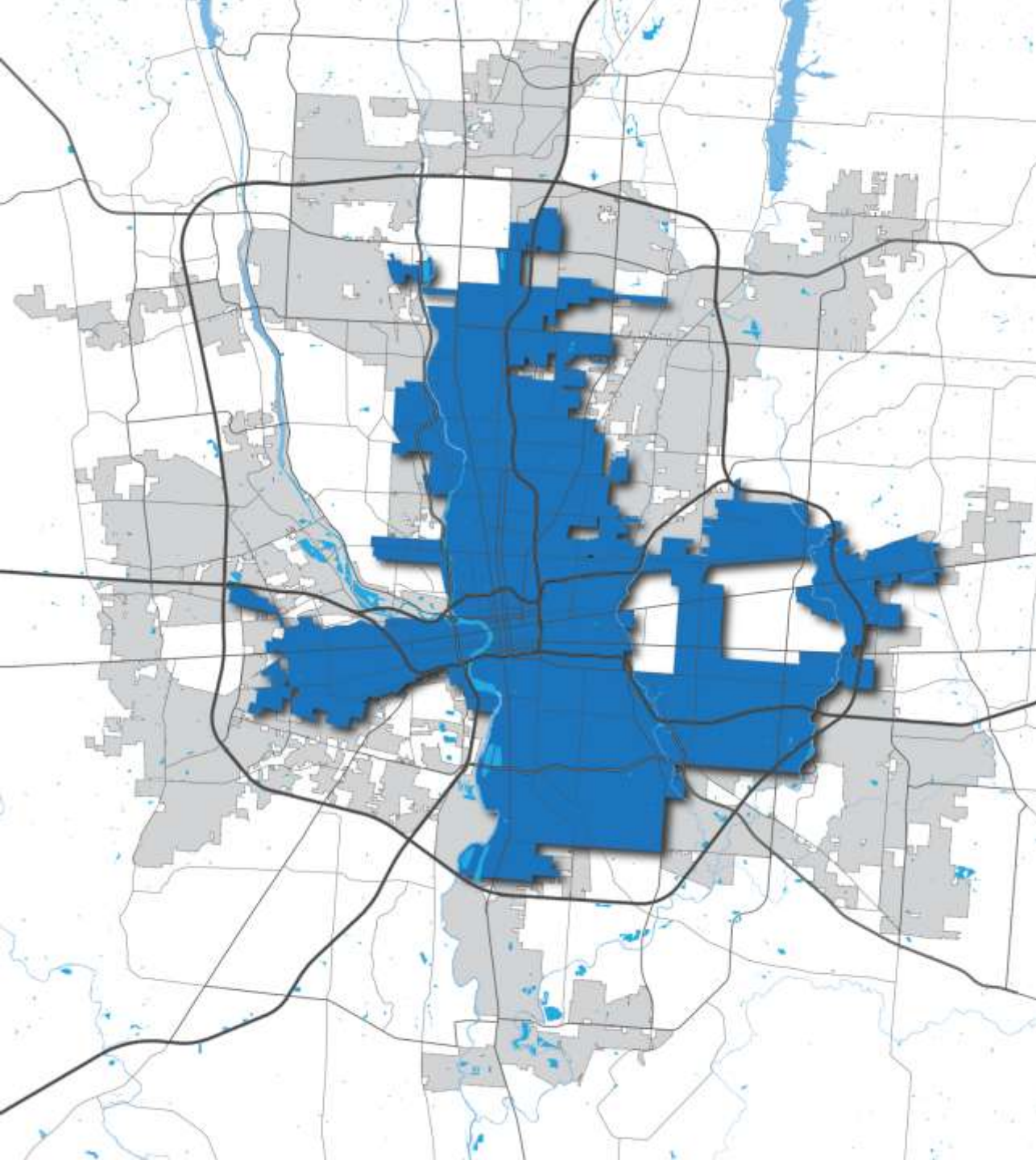
1870



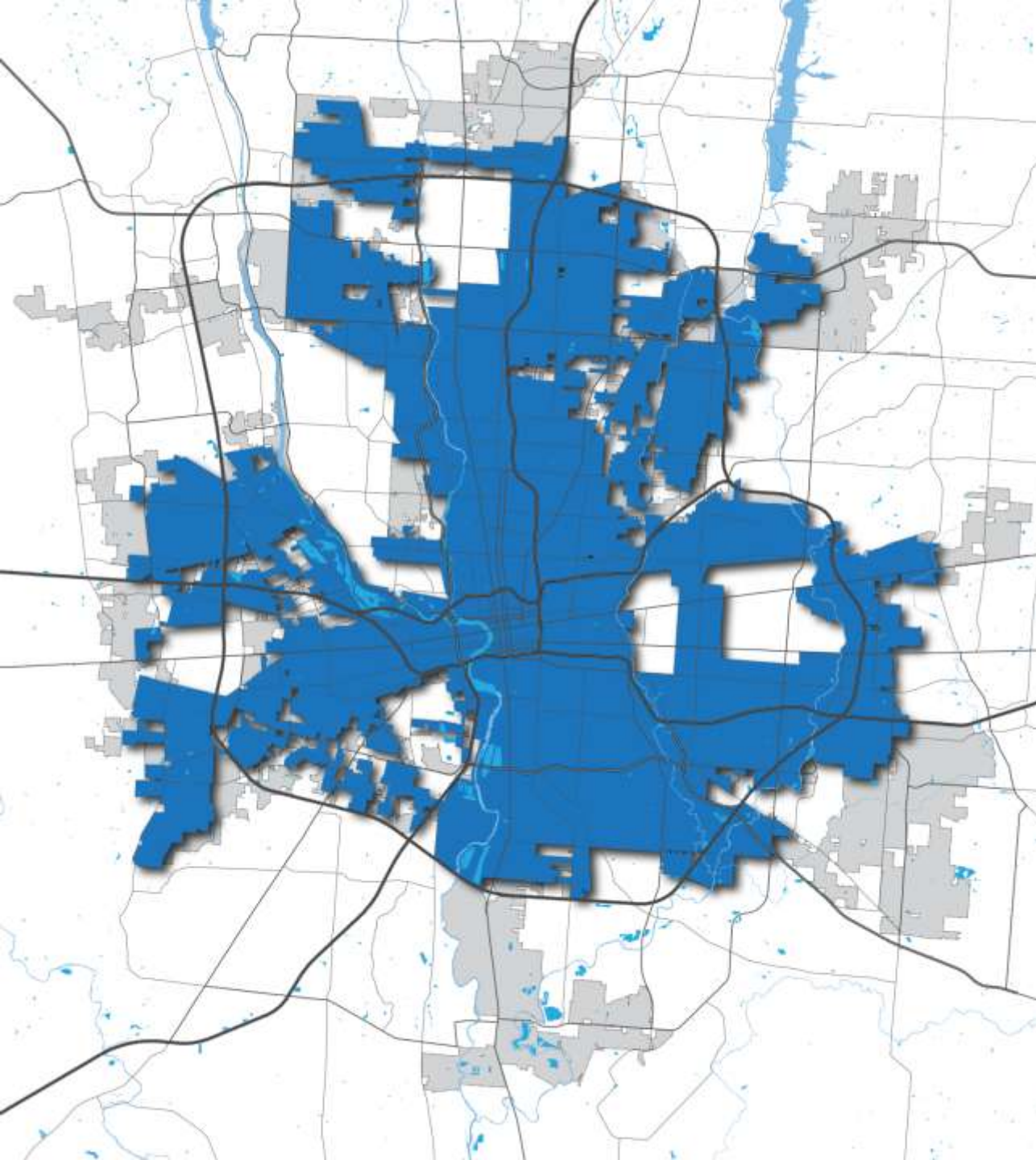
1928



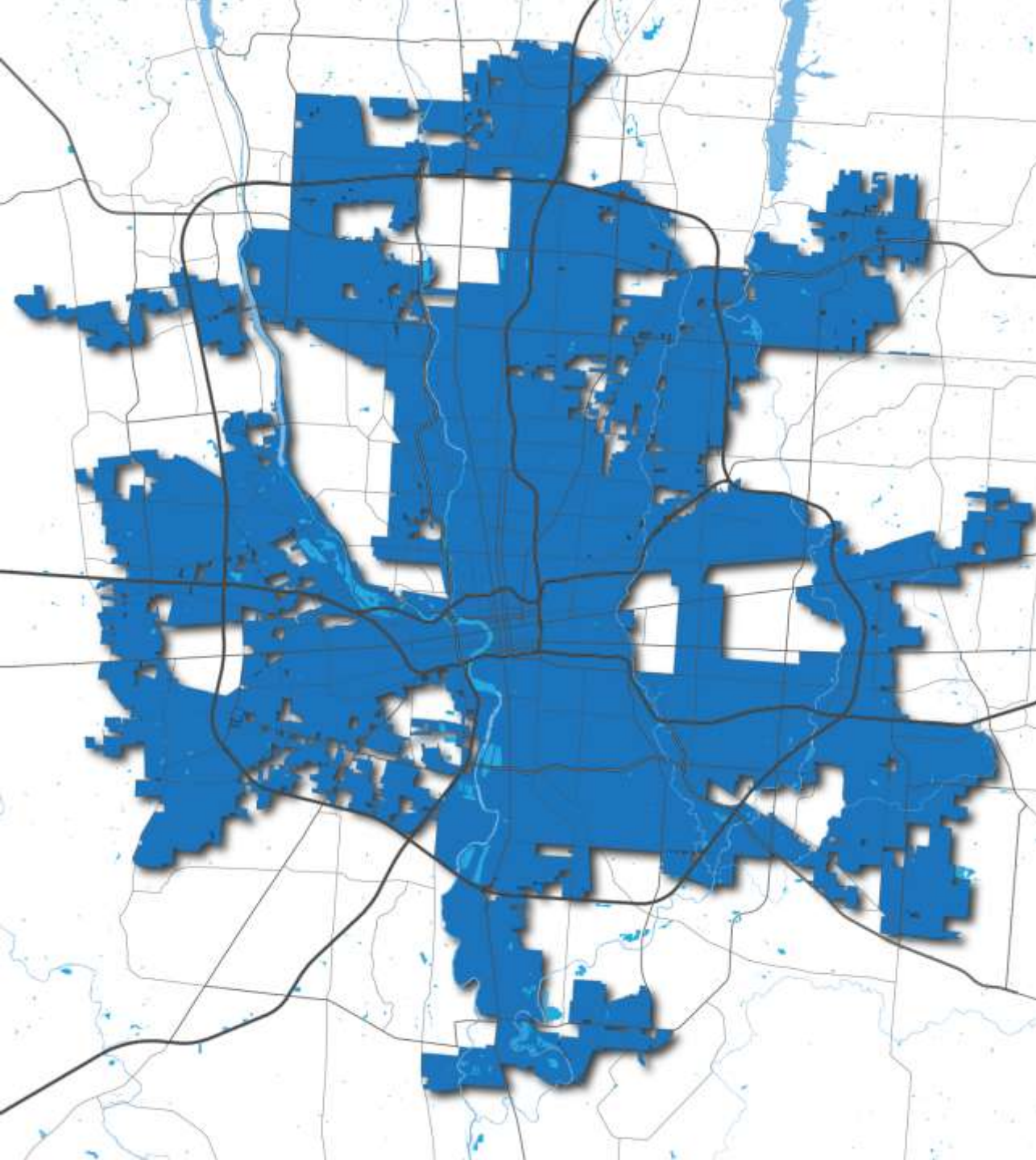
1957



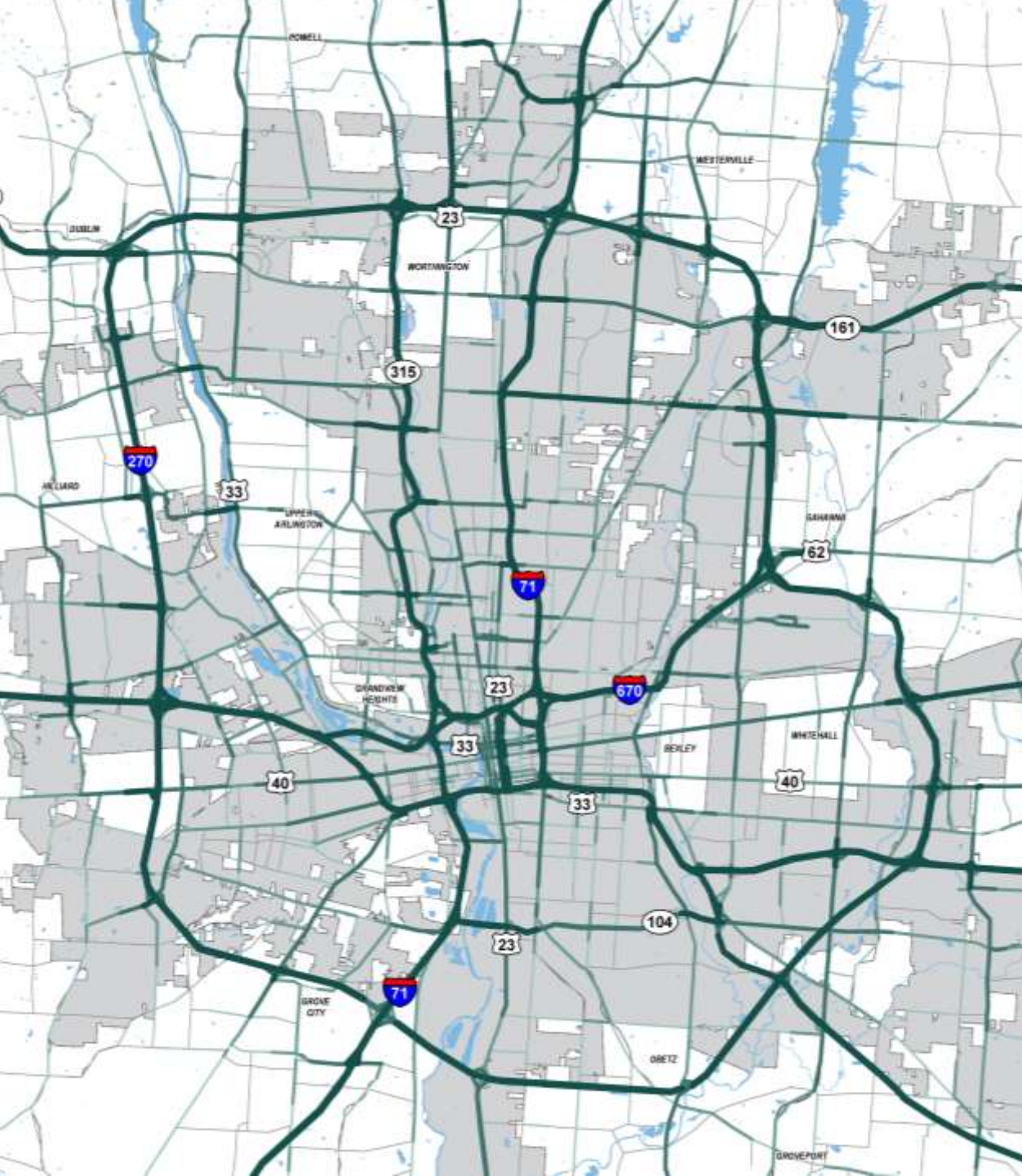
1972



Present



Freeways





U.S. METROS RANKED BY HOURS WASTED IN TRAFFIC YEARLY*

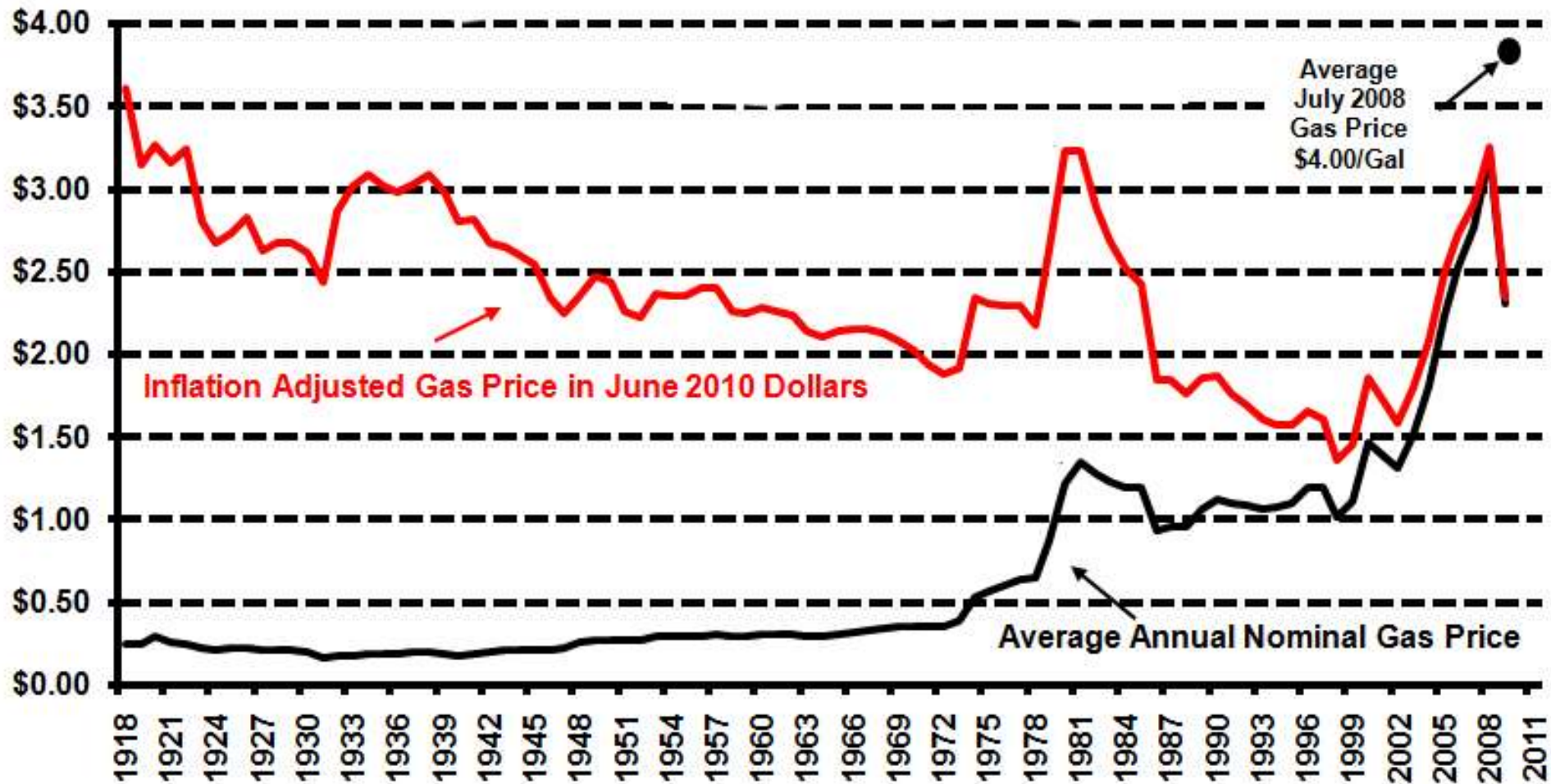


Copying Success, Ignoring Context



To facilitate travel over longer distances!

Today's Issues - Energy



Average
July 2008
Gas Price
\$4.00/Gal

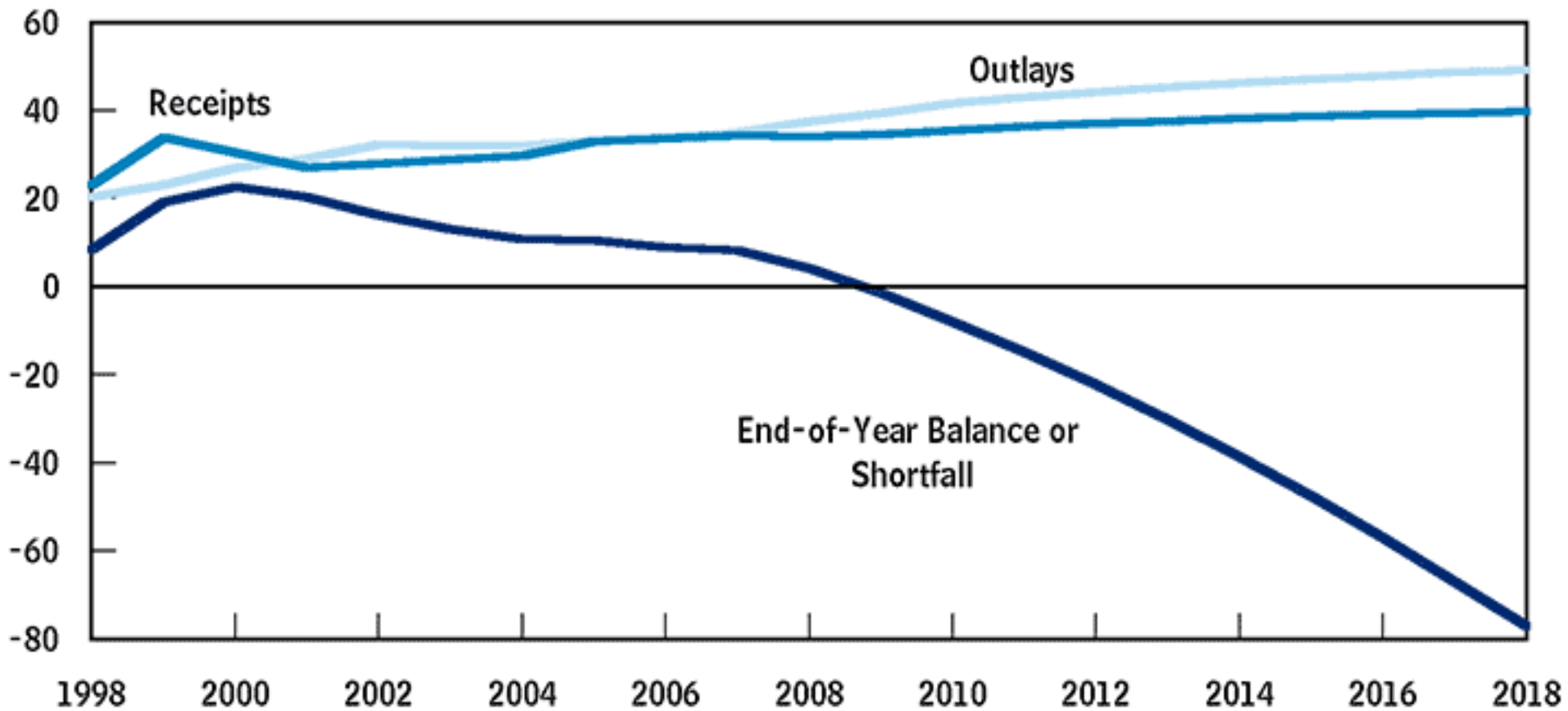
Inflation Adjusted Gas Price in June 2010 Dollars

Average Annual Nominal Gas Price

Note: Prices are Average Annual prices not Peak Prices so peaks are smoothed out considerably

Source of Data: US Energy Information Administration
CPI-U Inflation index- www.bls.gov

Today's Issues - Finance



Unintended Consequences

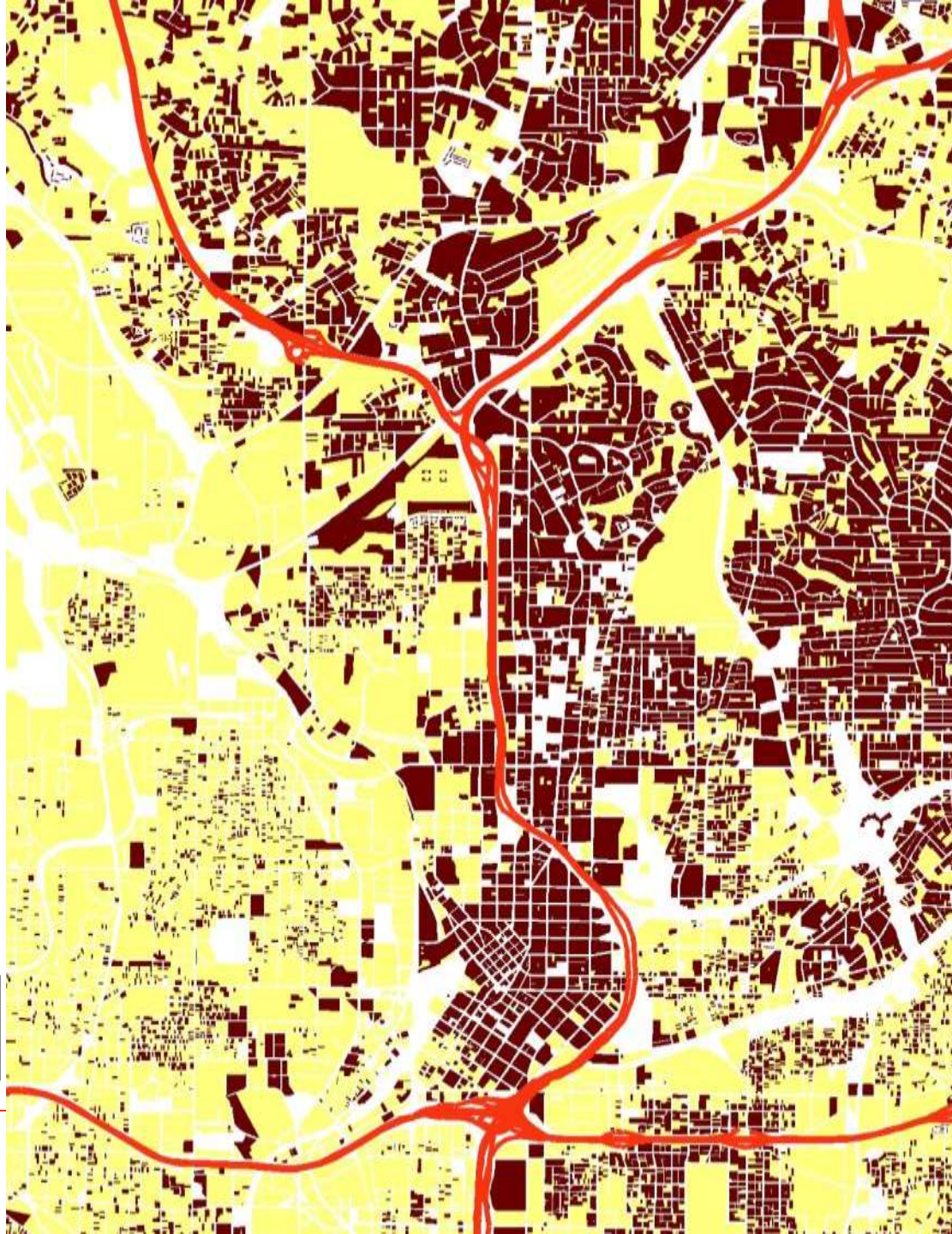
Trenton's Historic Riverfront



The Change for Mobility







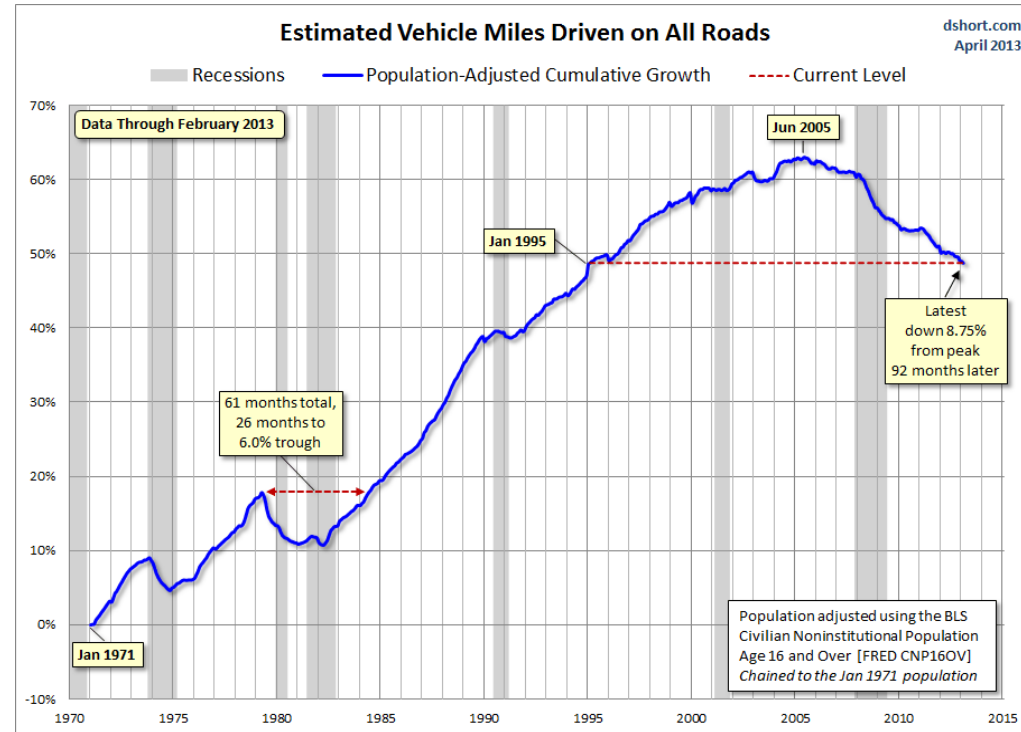
Above \$400K -
Create Space

Below \$400K -
Improve Access

CONNECT
COLUMBUS

Results Over the Last 50-Years

- 1) Vehicle Miles of Travel (VMT) Growing Faster Than Population Growth
- 2) Longer Commute Times
- 3) Decreased Transit Ridership





CONNECT
COLUMBUS

Diseases of this Century

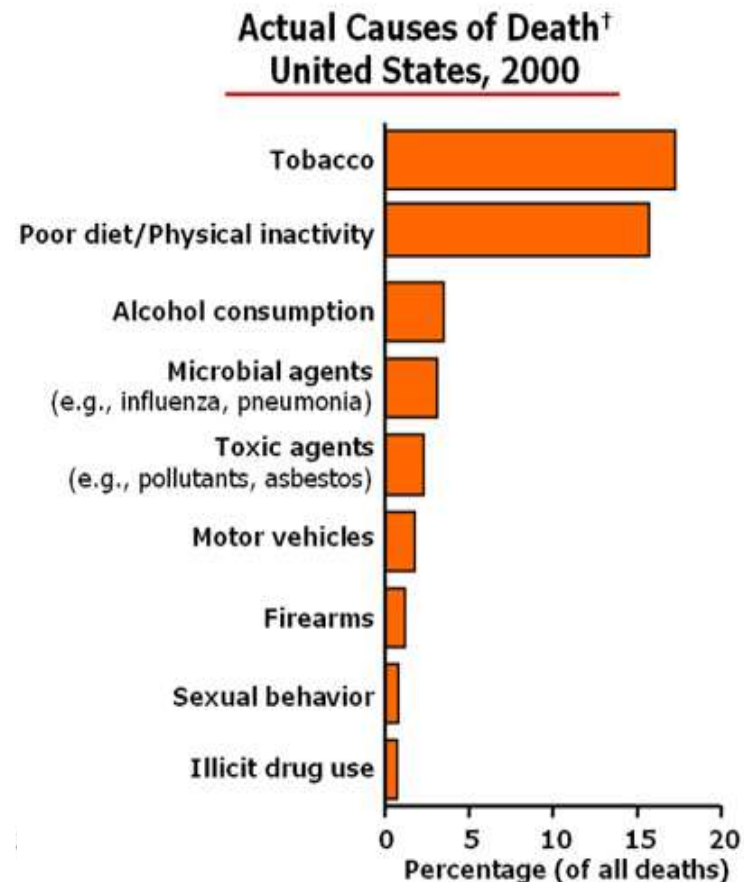
- Cardiovascular: Heart Attack
Stroke
- Respiratory: Asthma
Emphysema
- Weight Related: Diabetes II
Heart Disease
- Environmental: Cancer & other
“chronic” diseases

The Atlanta Journal-Constitution
AUG. 19, 2000 SATURDAY

Smothered in smog



Health Issue	Transportation Cause
Physical Safety	
Car Collisions	Speed
Physical Health	
Obesity	Inactivity
Asthma	Vehicle Emissions
Mental Health	Stress
Clean Water	Vehicle Waste



Environmental factors influence 85 out of the 102 categories of diseases and injuries listed in The World Health Report.

Today's Issues - Health



Humana Vitality

Humana Vitality

18,208 likes · 575 talking about this

 Like

Message



Health/Medical/Pharmaceuticals

Welcome to HumanaVitality! We are a wellness company that will help you stay motivated to be healthy and reach your fitness goals. Connect with us!

About – Suggest an Edit



Photos



18,208

Likes



Welcome



How it works

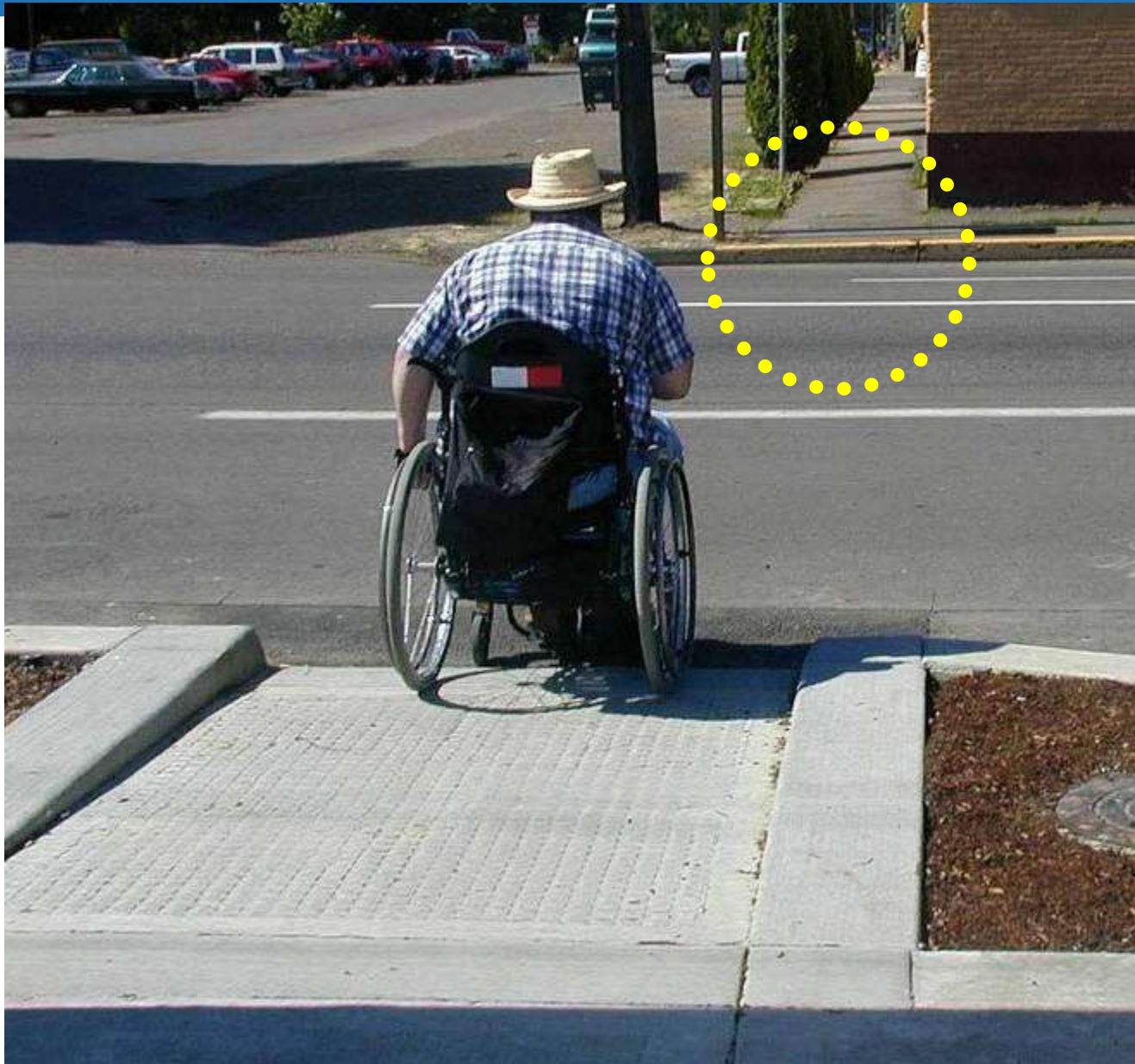
COLUMBUS

Consumption of Resources

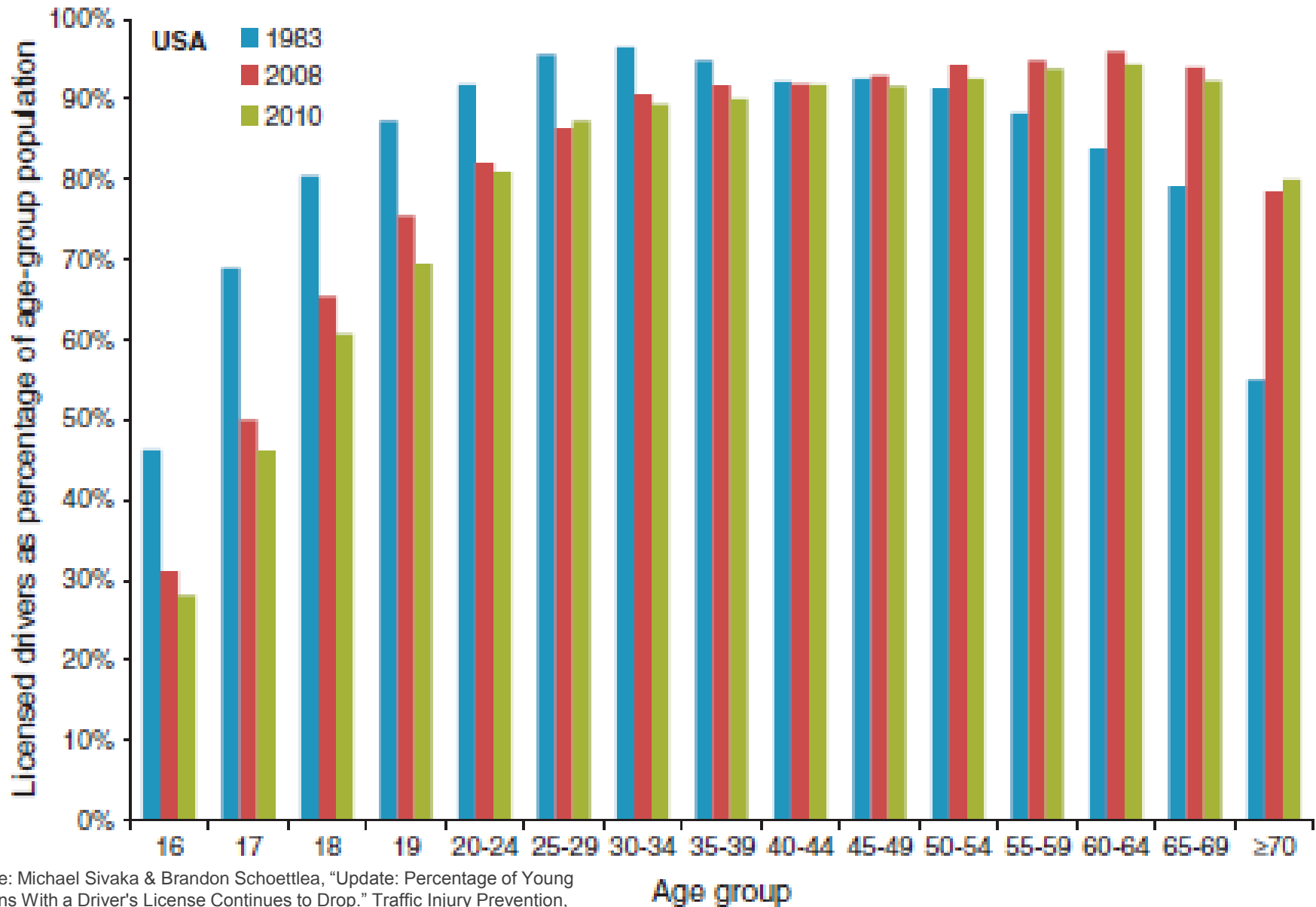




People Left Behind



US Licensed Drivers By Age Group



Source: Michael Sivaka & Brandon Schoettler, "Update: Percentage of Young Persons With a Driver's License Continues to Drop." Traffic Injury Prevention, Volume 13, Issue 4, 2012. Page 341.

Connect Columbus Process

A Strategic Plan

“A good hockey player plays where the puck is. A great hockey player plays where the puck is going to be.”

Wayne Gretzky

Our Process



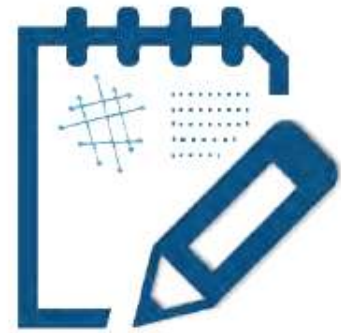
1. Discovery



2. Desire

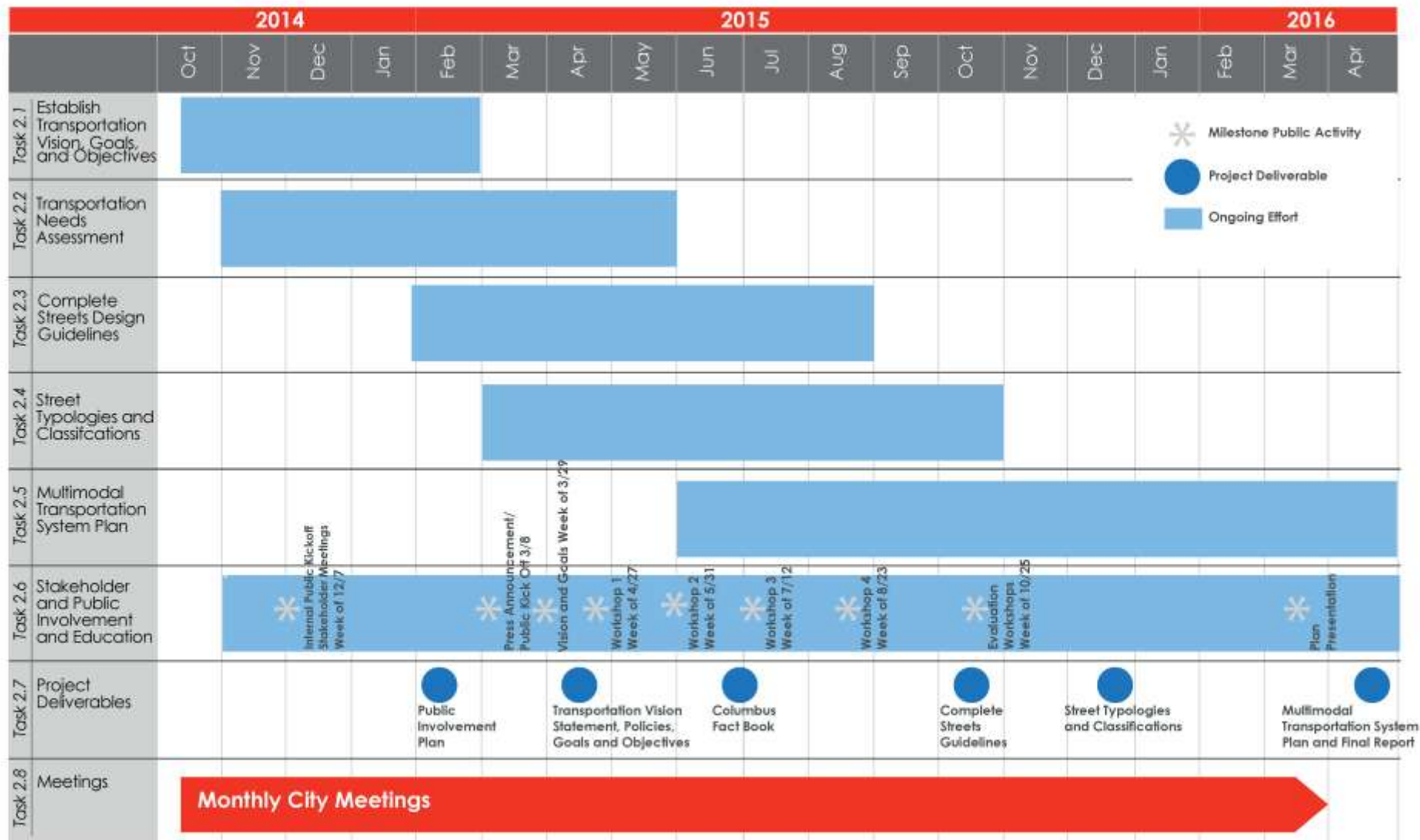


3. Design



4. Documentation

Project Schedule



Project Coordination

2016-2040 Columbus Area
Metropolitan Transportation Plan



CONNECT
COLUMBUS

Move

Differently

Travel Modes

	Drive Alone	Carpool	Transit	Walk	Other Means
Columbus Region	83%	8%	2%	2%	5%
City of Columbus	81%	8%	3%	3%	5%

Source: 2009-2013 American Community Survey 5-Year Estimates

[illegible]

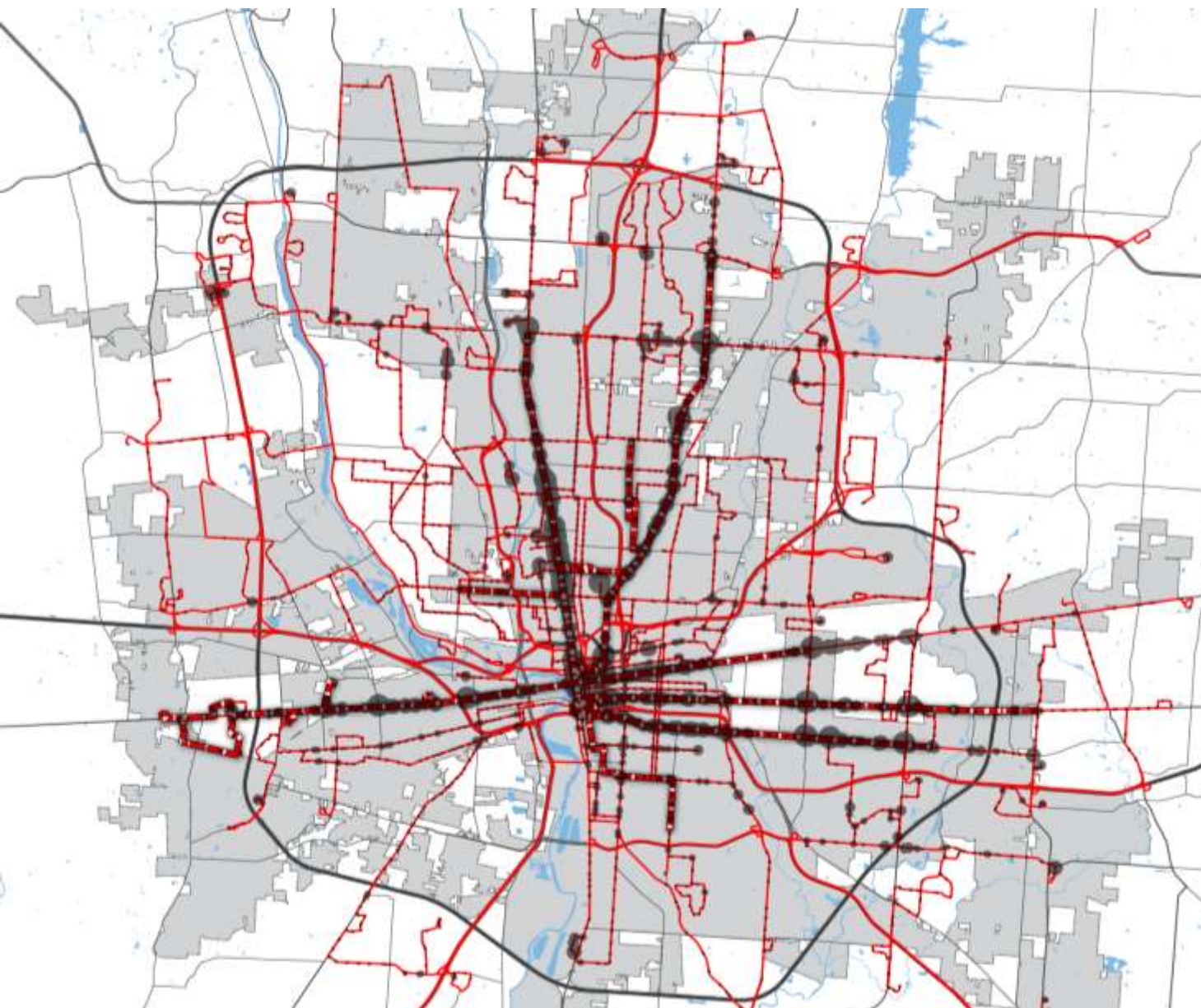
**CONNECT
COLUMBUS**

Sidewalks



Transit Decision Drivers

- **Frequency**
- **Hours**
- **Safety**
- **Cost (Relative To Driving)**



Transit Commitment - Denver



\$6.1 Billion
Investment In 122
Miles of Transit

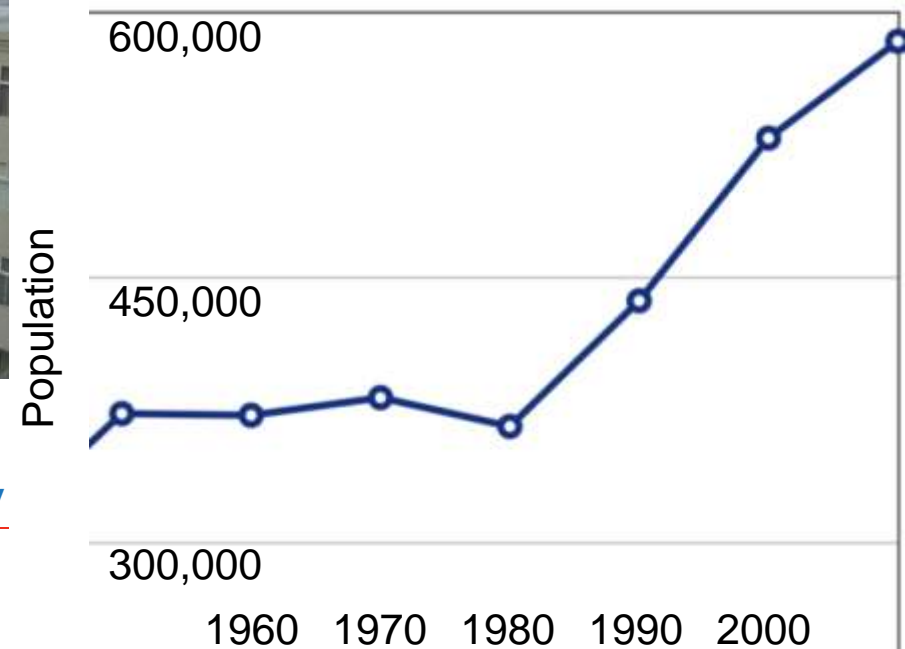
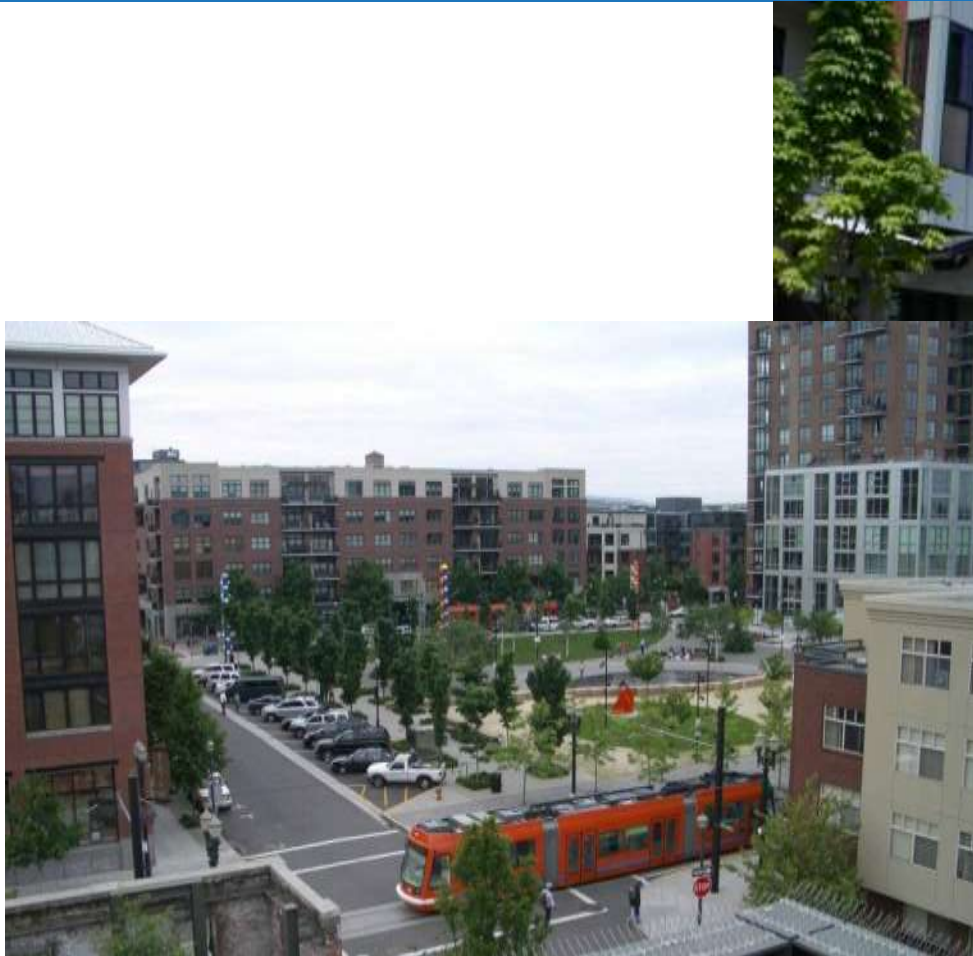


Transit Commitment - Charlotte

- \$8.9 Billion Investment In Transit
- Over \$1 Billion in Private Investment Before Opening

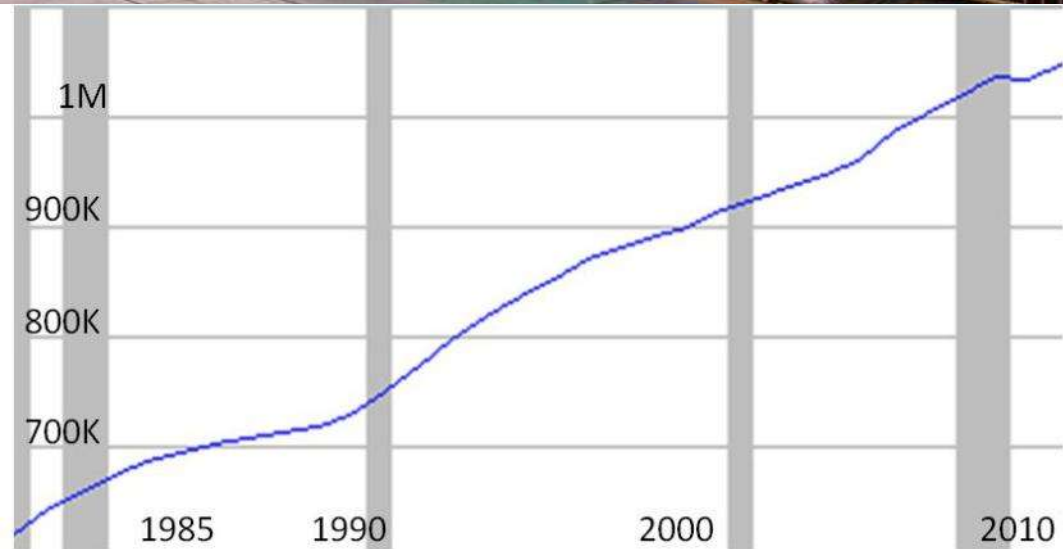


Transit Commitment - Portland



\$2.6 Billion Added to Local Economy By
Getting Citizens to Drive 4 Less Miles Per Day

Transit Commitment – Salt Lake City



SLC tops the US in transit
connecting people and jobs

CONNECT
COLUMBUS

MBTA Key Bus Routes



- MBTA's 15 highest ridership bus routes
- Capital Improvements

MBTA Key Routes



Bus stops too close



Poorly located boarding area



Signage issues

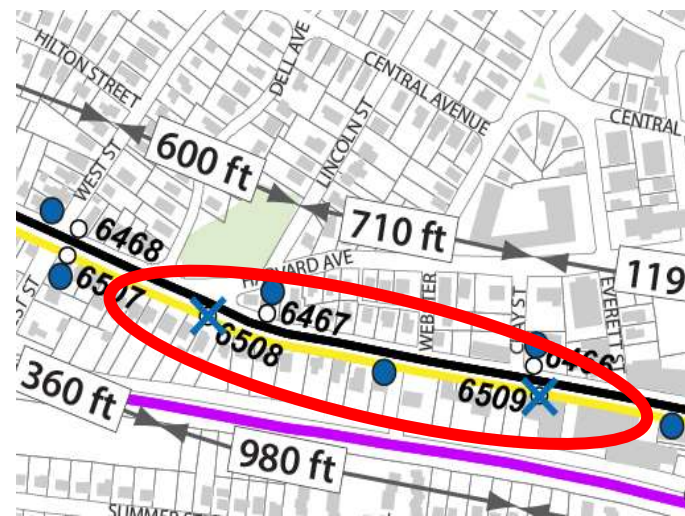


Lack of accessibility



Bus stop too short

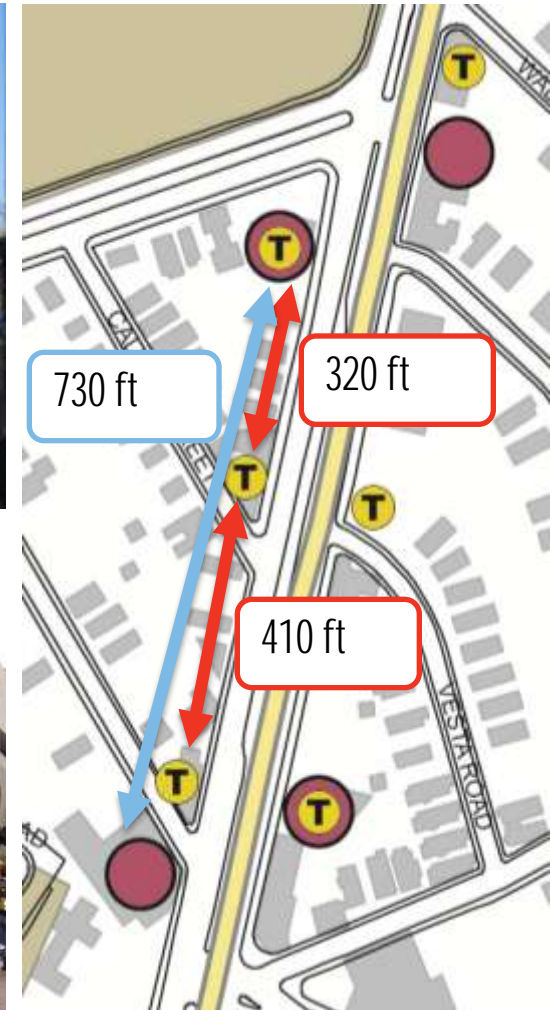
Typical Improvements



Stop Consolidation



Signal Improvements



Spacing



Curb Extensions



Improved Amenities

Cycle Design Is Not One-Size-Fits-All





For the price of a mile of highway, you too can have a bike-friendly city

Portland, Oregon is America's iconic cycling city, but I'm happy to say we're being swiftly overtaken as everywhere else gears up



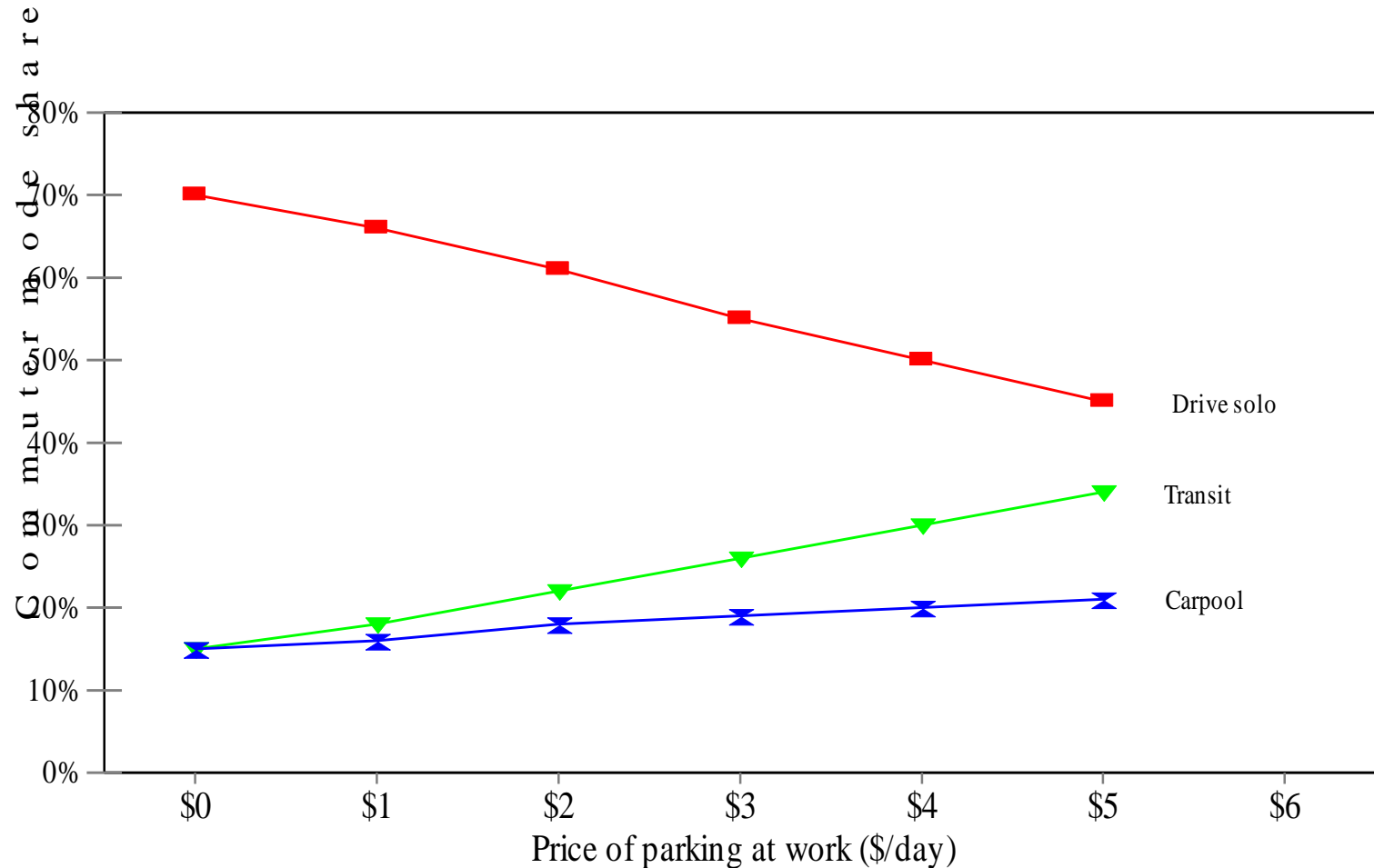
Elly Blue

theguardian.com, Monday 28 October 2013 09.45 EDT

Cars. They're noisy and ugly. They smell terrible and cause disease on an epidemic proportion. They move way too fast, take up an extraordinary amount of space, are a leech on the economy, and have a propensity to run people over, especially kids. What's to love?

Parking Prices Affect Mode Choices

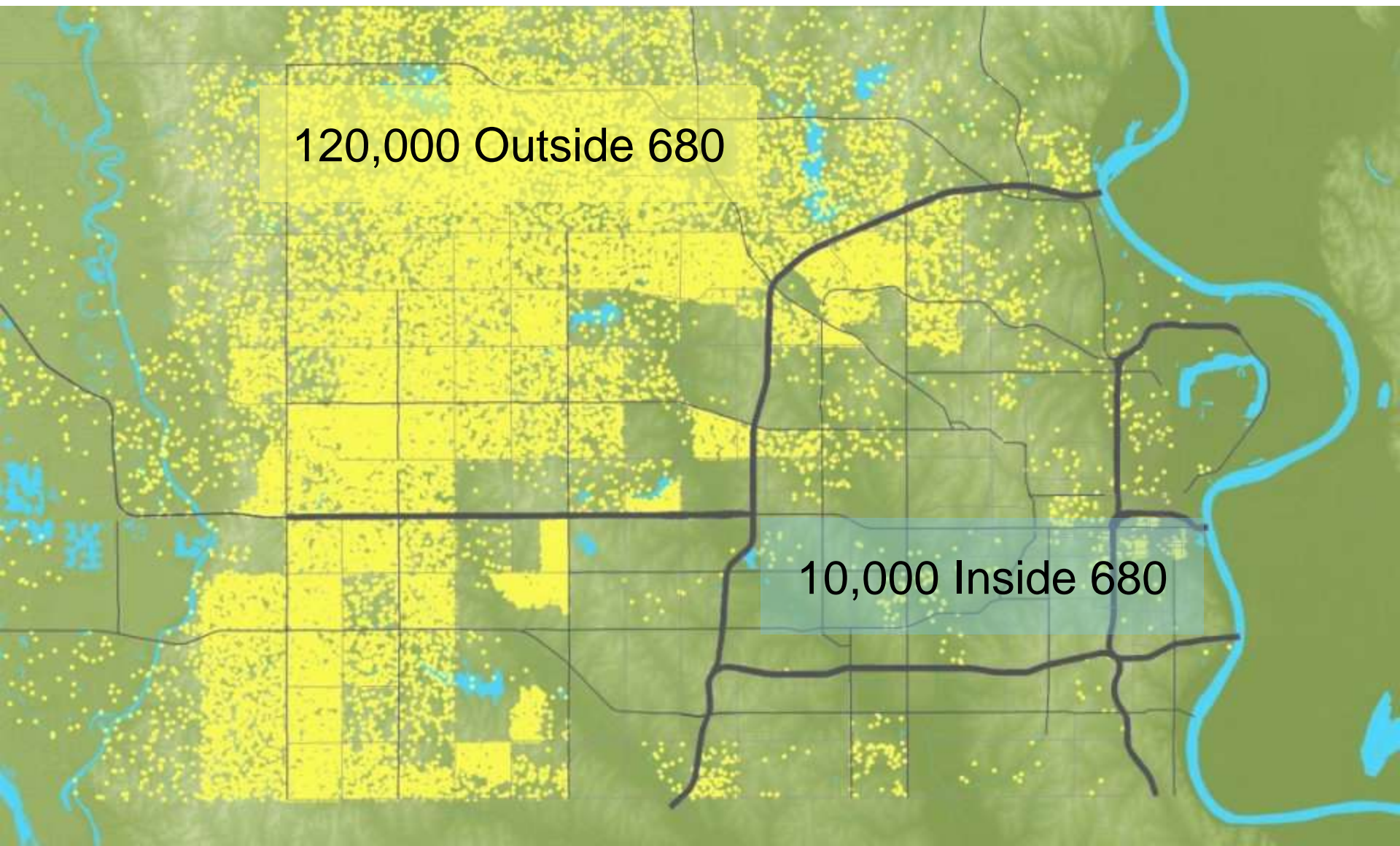
For Commuters to Downtown Los Angeles



Source: Estimated from Willson (1991)

Grow

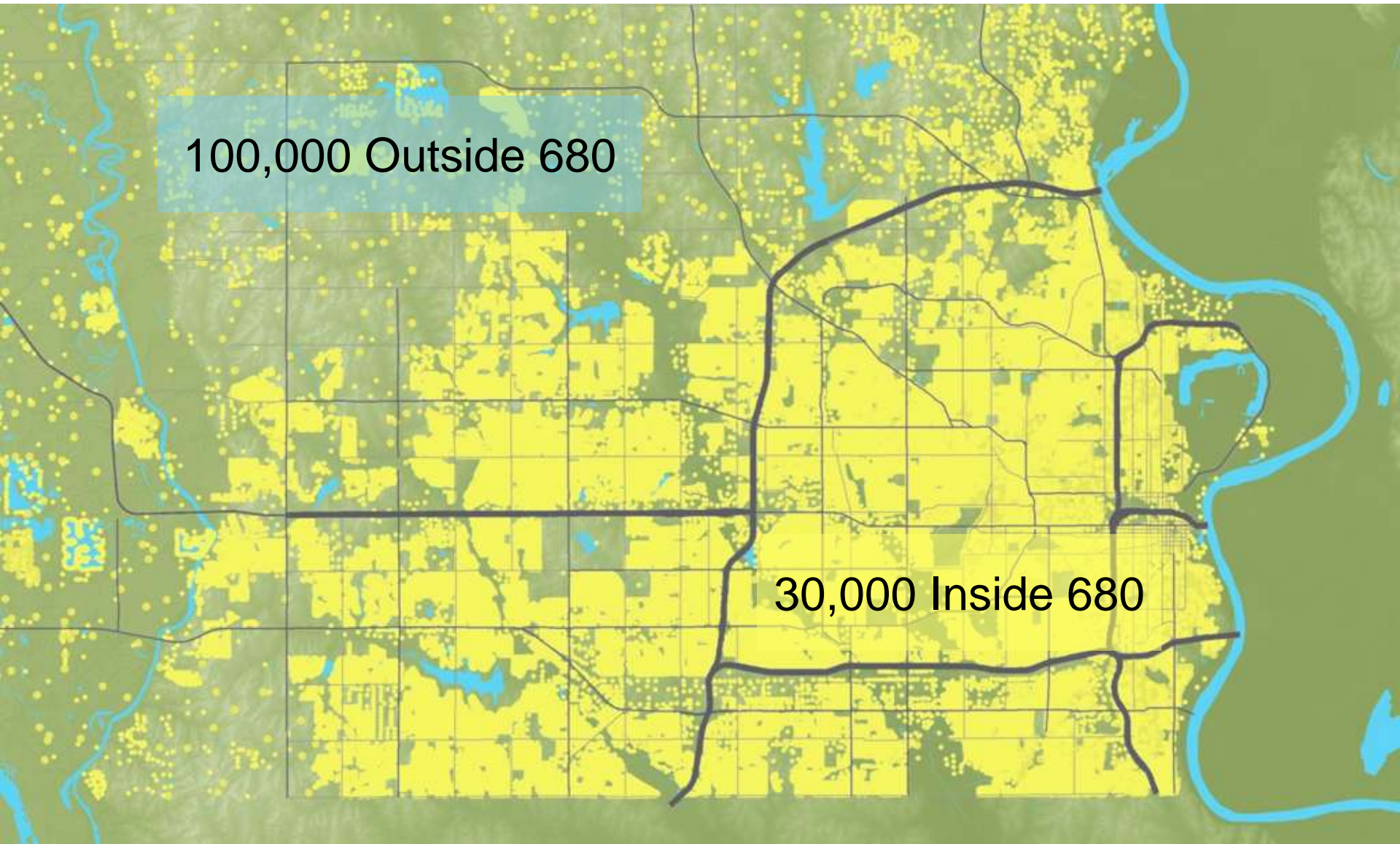
Differently



120,000 Outside 680

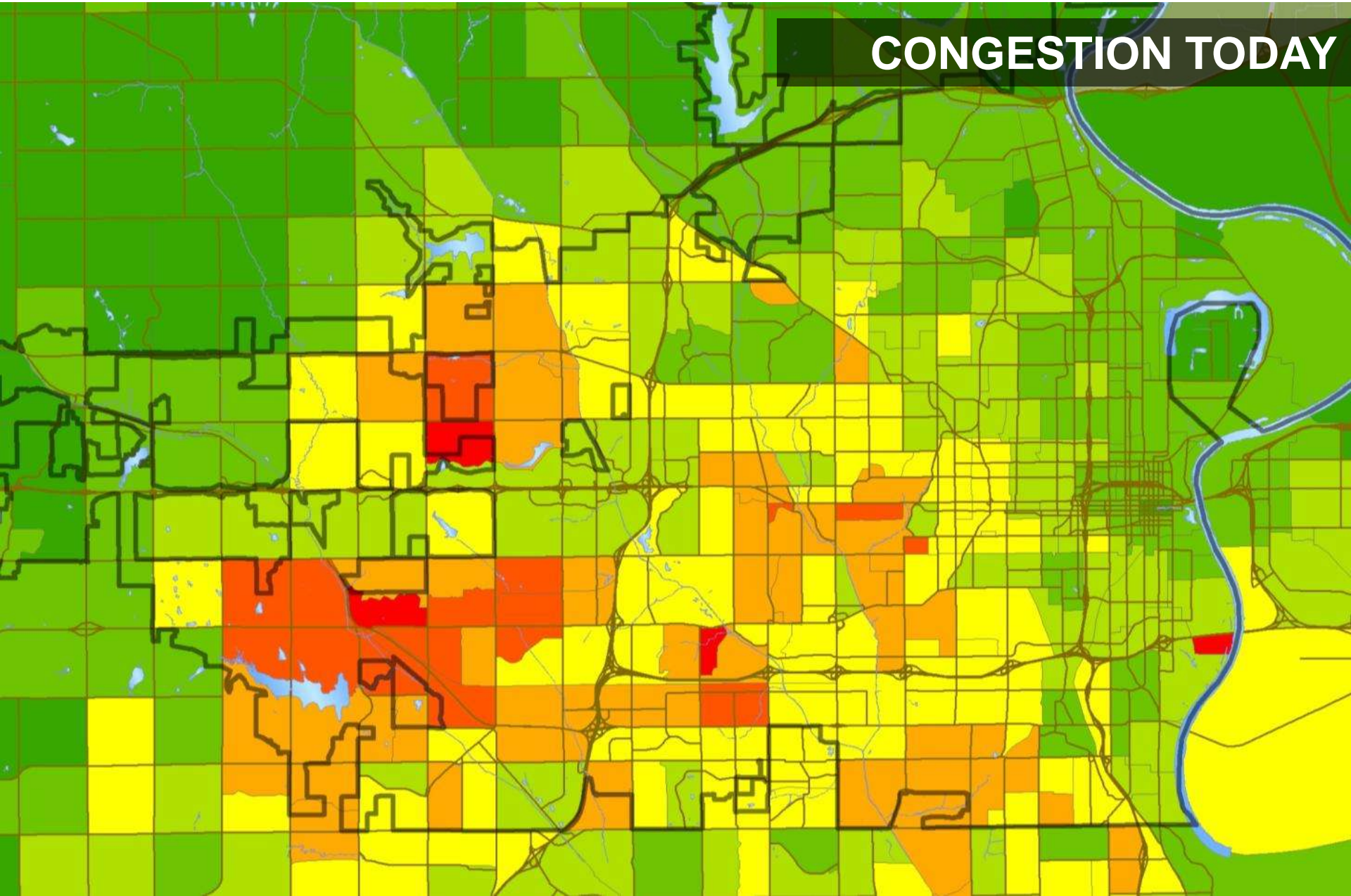
10,000 Inside 680

2035 Greater Infill Focus



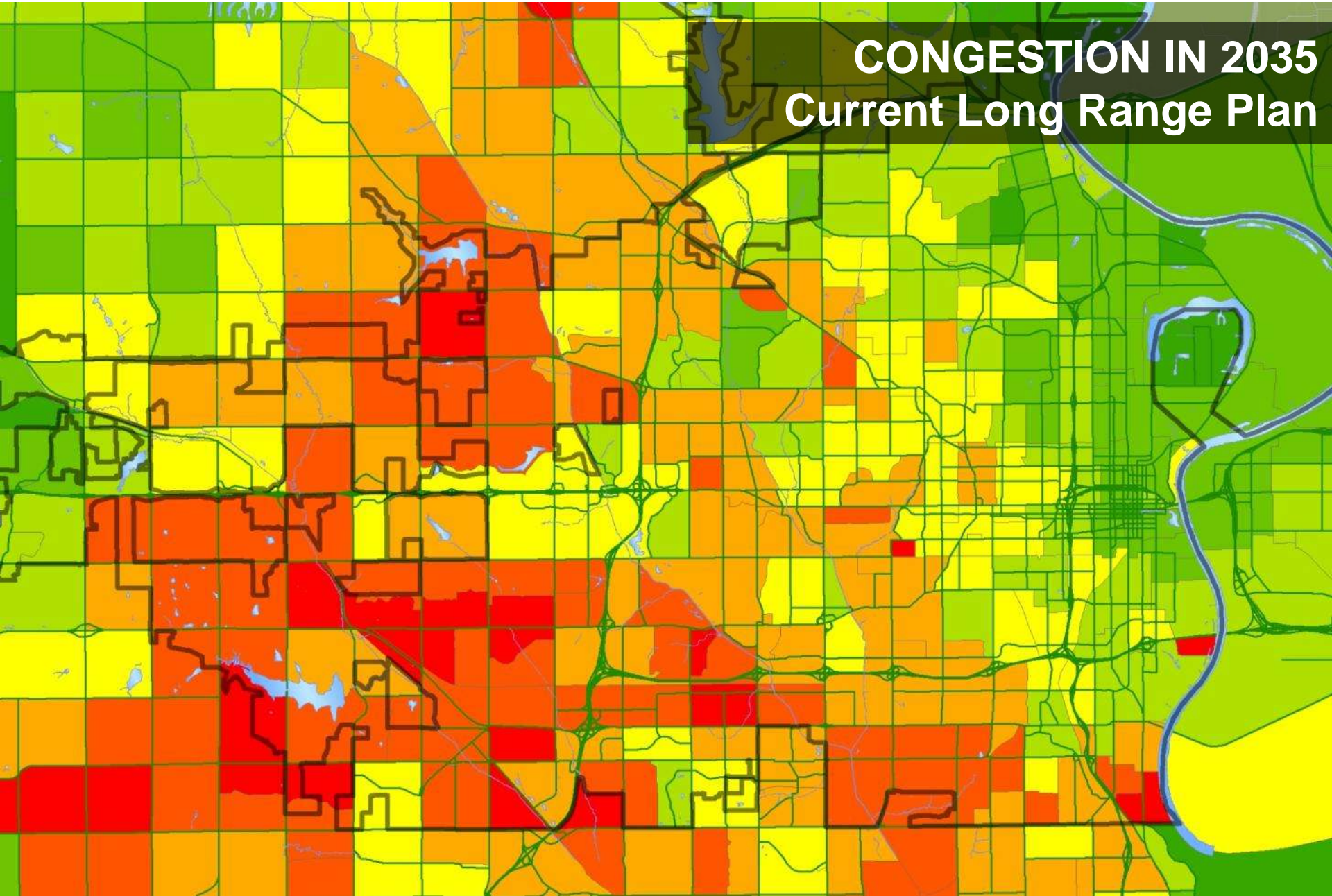
Congestion

CONGESTION TODAY



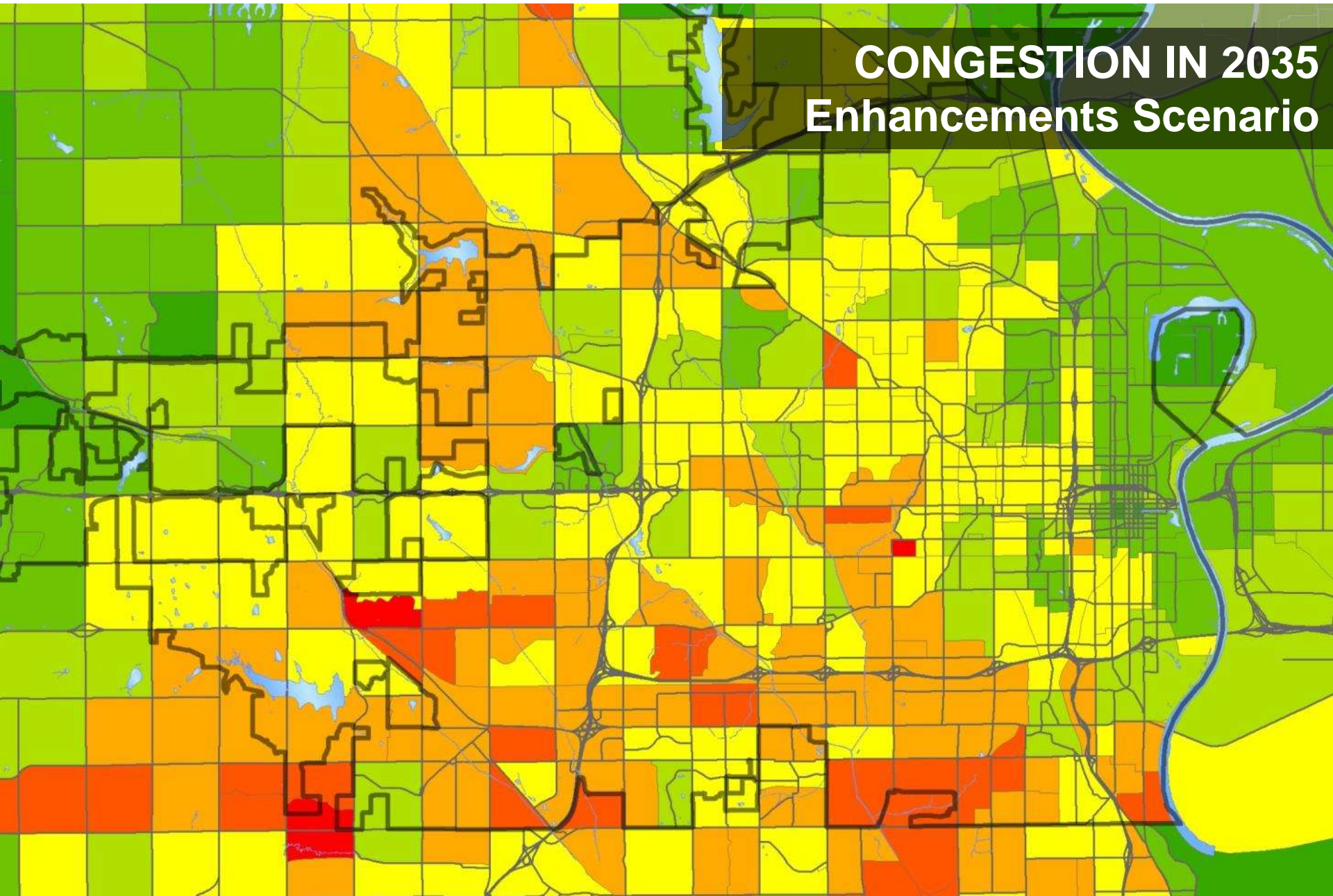
Congestion

CONGESTION IN 2035
Current Long Range Plan

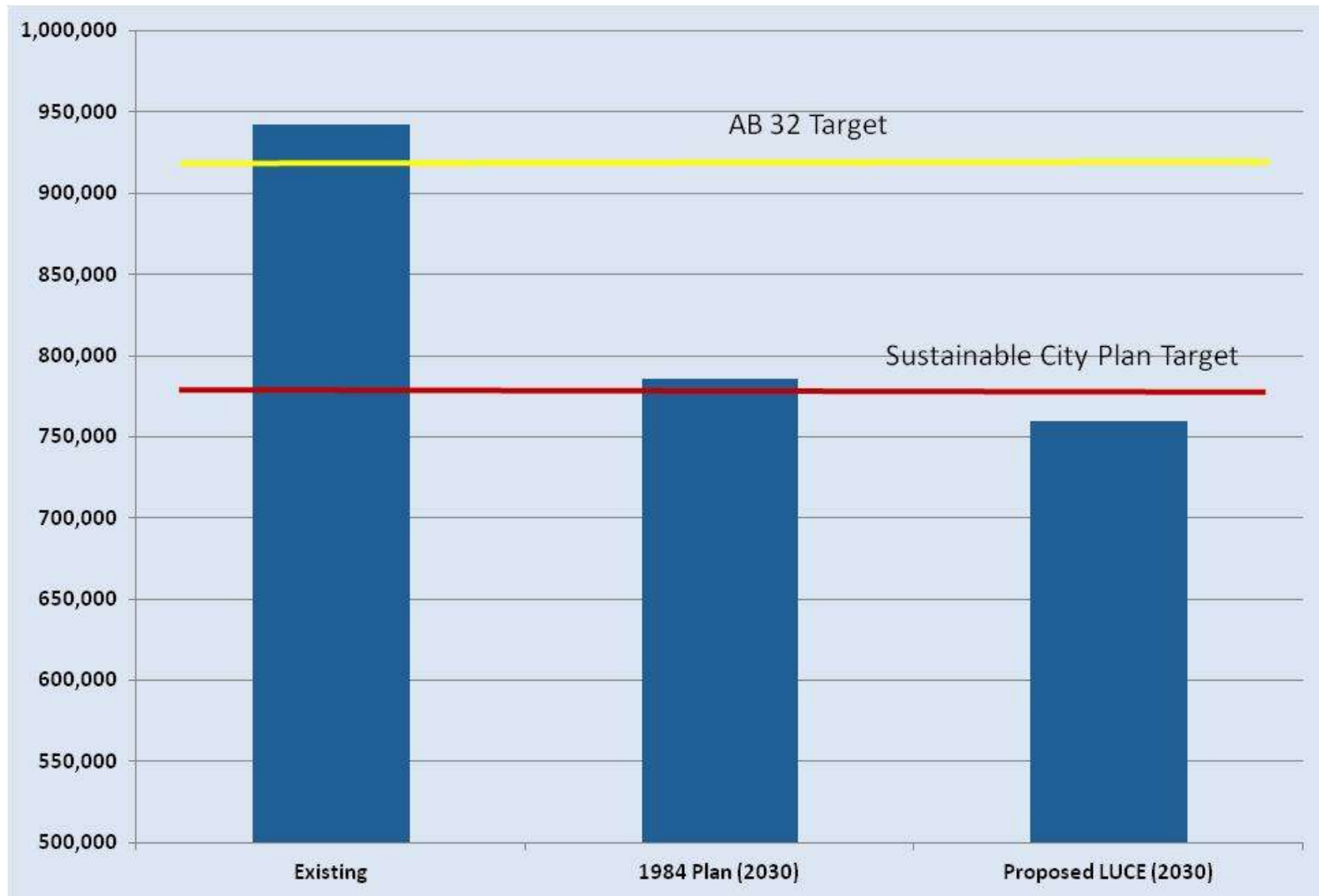


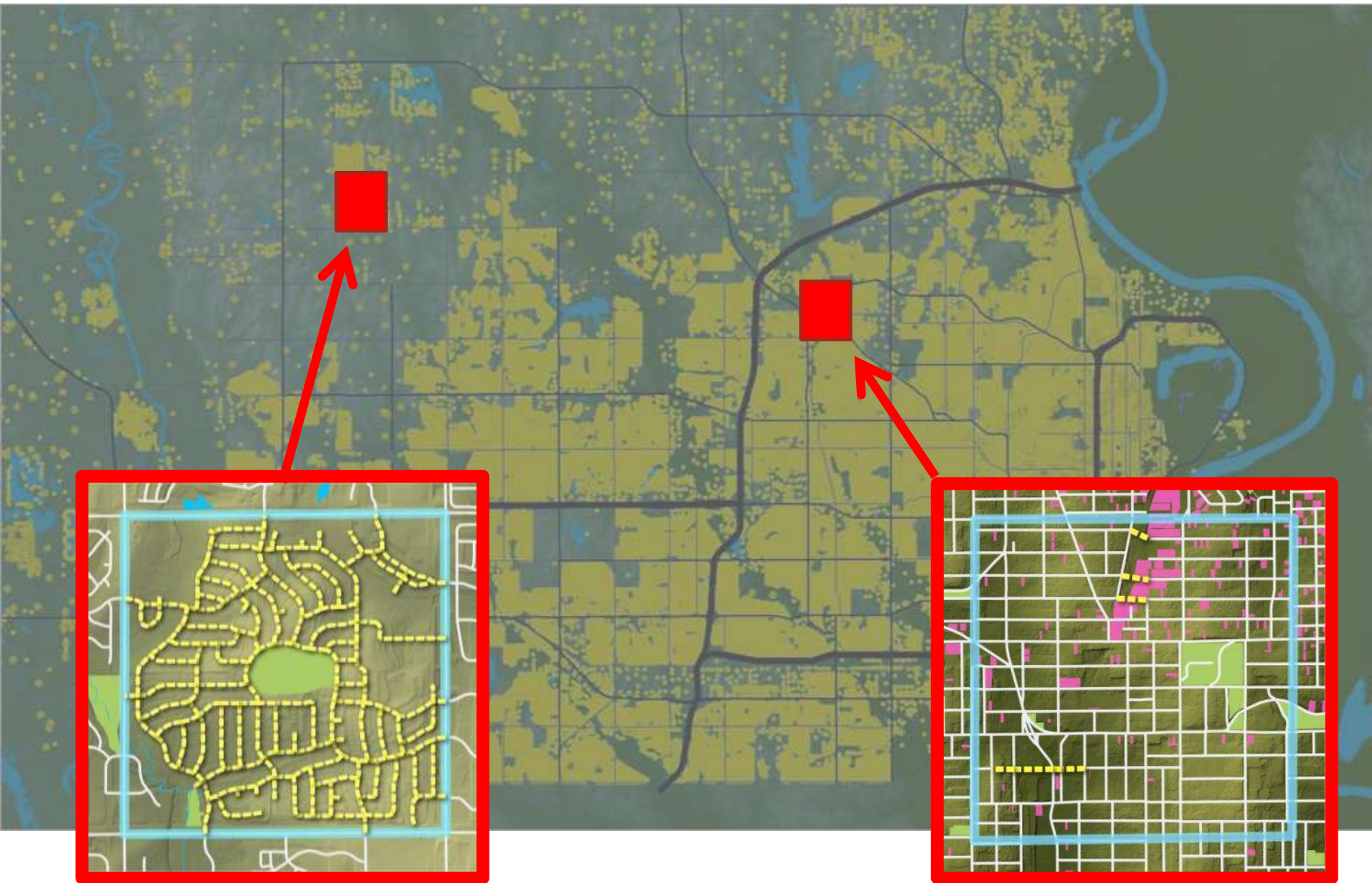
Congestion

CONGESTION IN 2035
Enhancements Scenario



Greenhouse Gasses





Street + Transit Costs

Annualized Street Construction Cost	\$2,645,000	\$68,000
Annual Street Maintenance Cost	\$193,000	\$136,000
Annualized Transit Capital Cost	\$35,000	\$17,000
Annual Transit Operating Cost	\$235,000	\$119,000
TOTAL COSTS	\$3,108,000	\$340,000

Put Rights of Way To **Work**

Support Retail and Restaurant



Clematis Street – West Palm Beach, FL

Support Retail and Restaurant



Clematis Street – West Palm Beach, FL

Fort Washington Way

Cincinnati, Ohio



Fort Washington Way

Cincinnati, Ohio



Fort Washington Way

Cincinnati, Ohio



Fort Washington Way

Cincinnati, Ohio



Underground transit center

Fort Washington Way

Cincinnati, Ohio





City turns the park into parking (with freeway access)









Riverfront Parkway - Chattanooga



Riverfront Parkway - Chattanooga

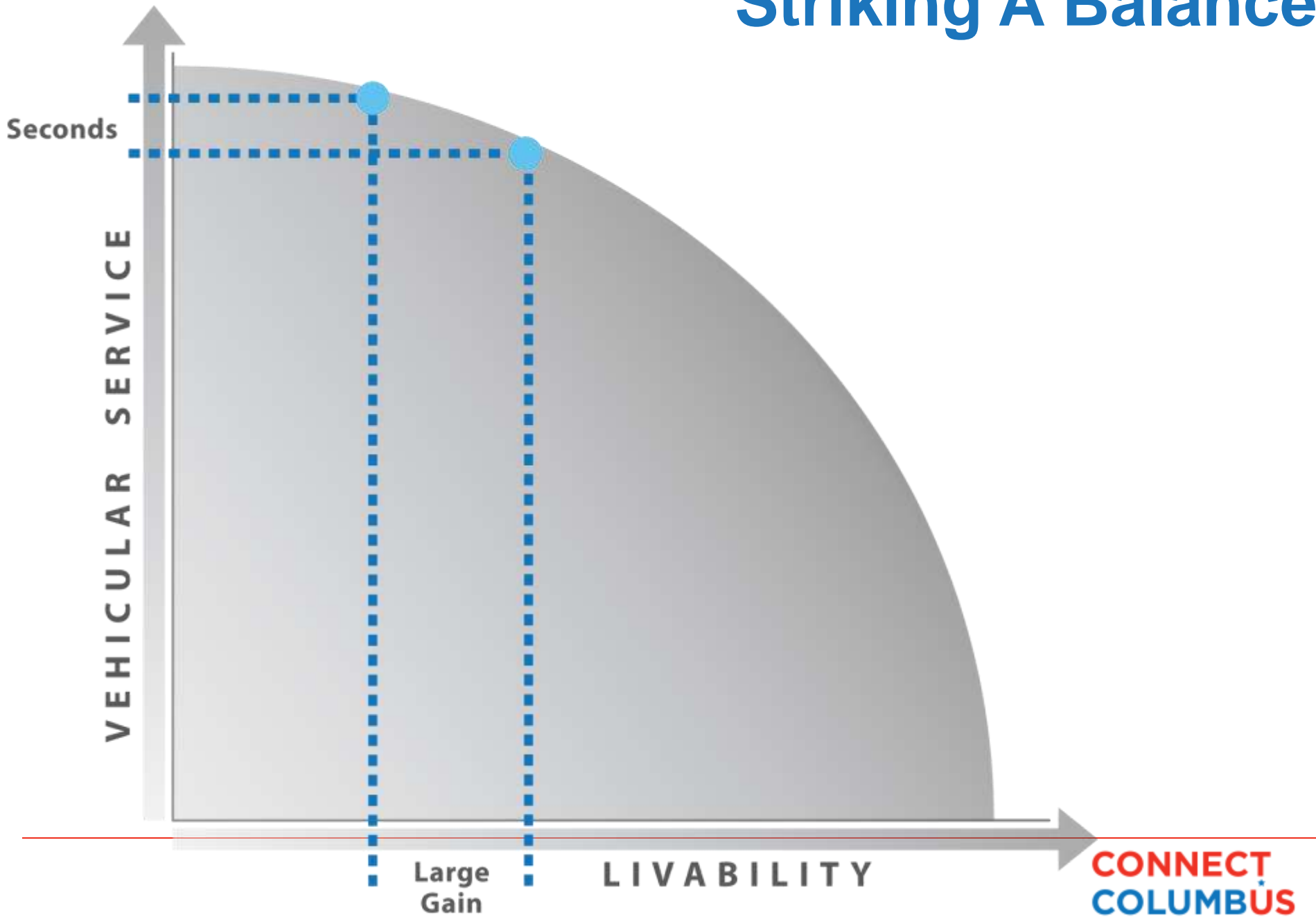


Riverfront Parkway - Chattanooga





Striking A Balance



We can do nothing and
just take our chances...

...or we can
choose now to plan for
change.

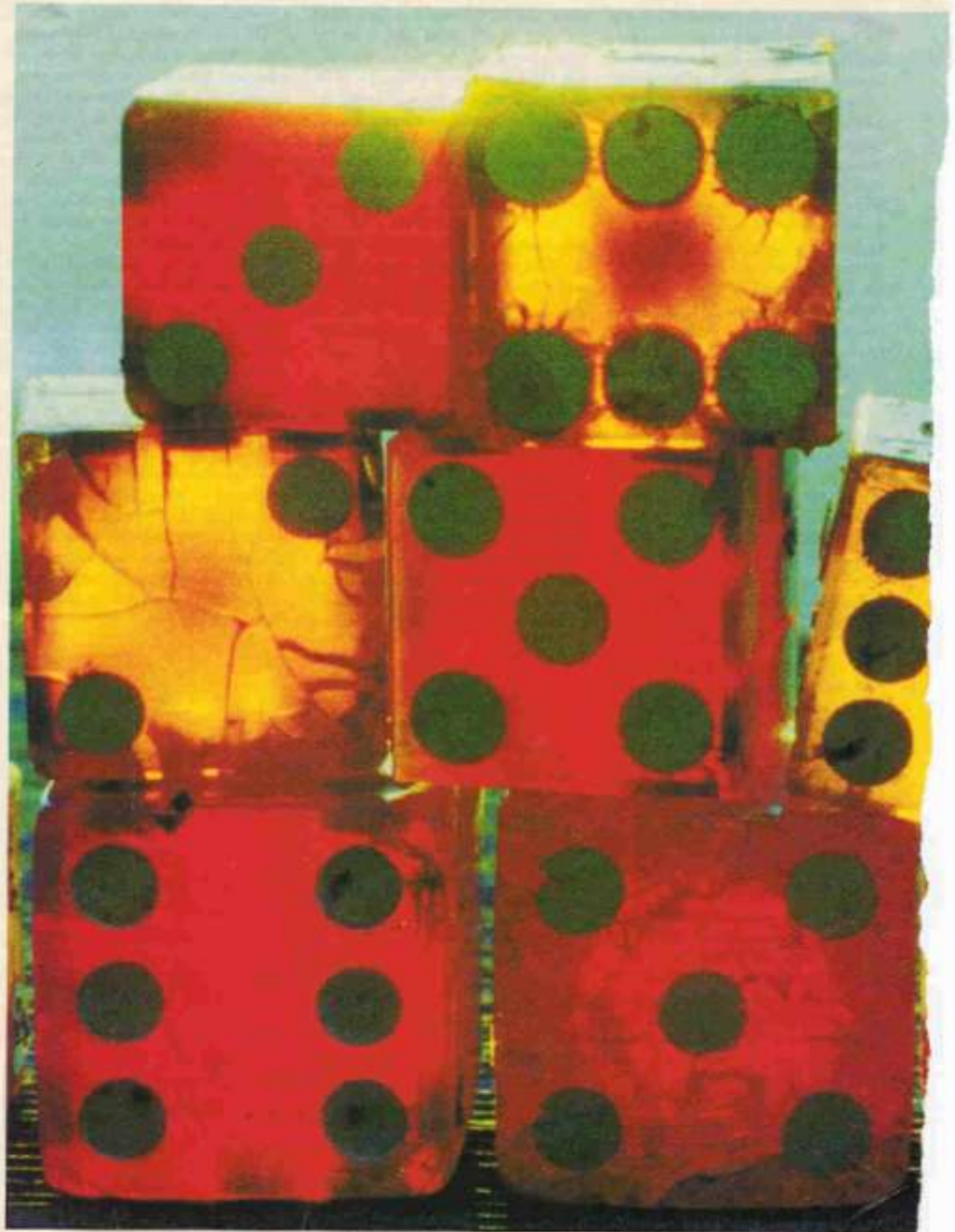


Image source: The New Yorker

Columbus

Tomorrow

Walking is a pleasure everywhere for everyone



Flickr/alisharusher

<http://www.flickr.com/photos/9541469@N05/2424508231/>

CONNECT
COLUMBUS

Cycling is comfortable for all ages



The needs of daily life are a walk away



Flickr/ohad* <http://www.flickr.com/photos/ohadby/854161159/>

Transit is fast, frequent, reliable and dignified



Wikipedia http://commons.wikimedia.org/wiki/File:Tramway_Strasbourg_FRA_001.jpg

Everyone knows and loves their neighborhood



<http://www.flickr.com/photos/joebehr/1782474408/>

Food and energy are local and precious



Social networks are fostered



Flickr/Ed Yourdon

<http://www.flickr.com/photos/yourdon/3863997453/>

215 Planning Documents Reviewed

Of those 215 planning documents reviewed by the Connect Columbus team, how many documents supported each of the goals?

DRAFT

31
Neighborhood Development

29
Economic Development

23
Health and Safety

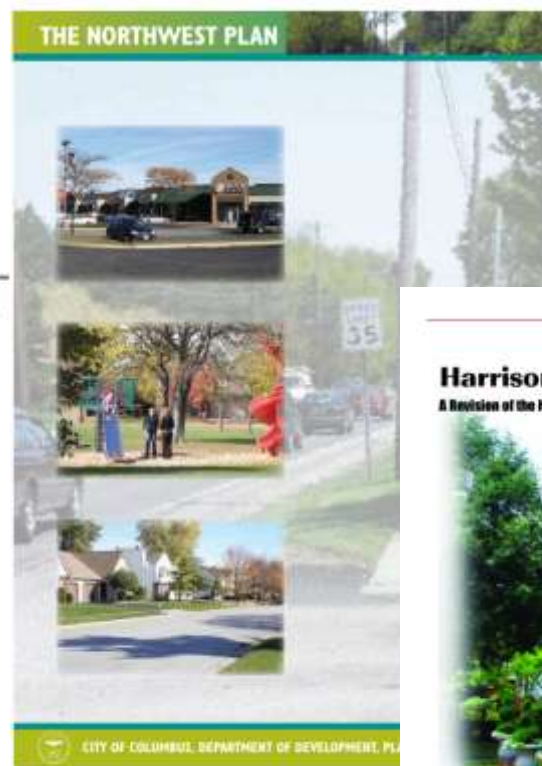
21
Access

13
Sustainability

5
Resiliency

4
Placemaking

2
Equity



Harrison West Plan

A Revision of the Harrison West Reach Section of the Columbus Riverfront Vision Plan



City of Columbus, Department of Development, Planning Division

Livingston East Area Plan

City of Columbus / Department of Development / Planning Division



**CONNECT
COLUMBUS**



Discussion - Draft Project Goals

- **Health and Safety:** Promote health, safety and welfare throughout neighborhoods within the City
- **Access:** Increase mobility options for residents, employees and visitors
- **Equity:** Provide transportation choices that are equitable for all citizens
- **Sustainability:** Reduce resource consumption and promote sustainable and renewable transportation options
- **Resiliency:** Maximize infrastructure system resiliency to adapt to expected and unexpected changes
- **Neighborhood Development:** Protect and enhance Columbus' diverse neighborhoods
- **Economic Development:** Build Columbus' infrastructure to attract and retain key jobs and minds
- **Placemaking:** Invest in transportation as a driving force for community development and place making

DISCUSSION

THANK YOU