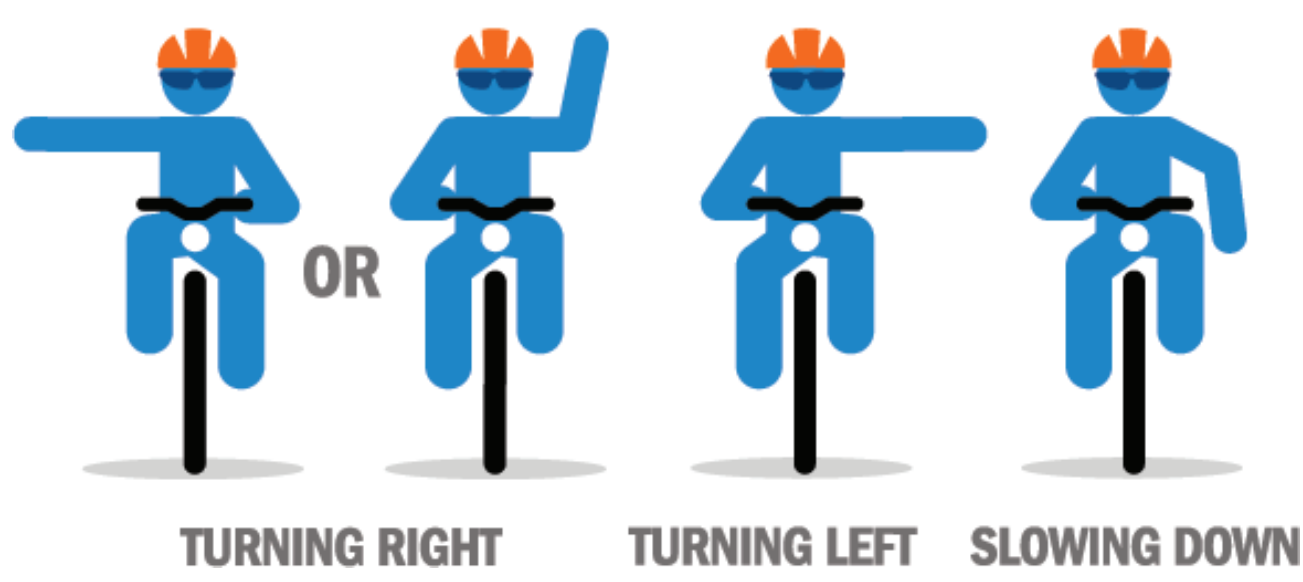


SHARING THE ROAD SAFELY

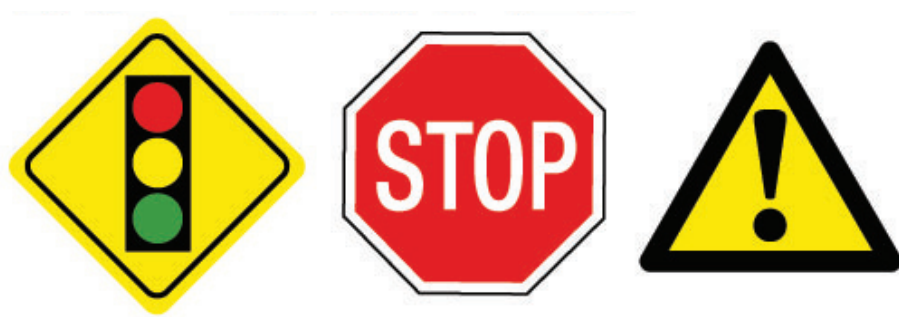
SIGNAL YOUR TURNS



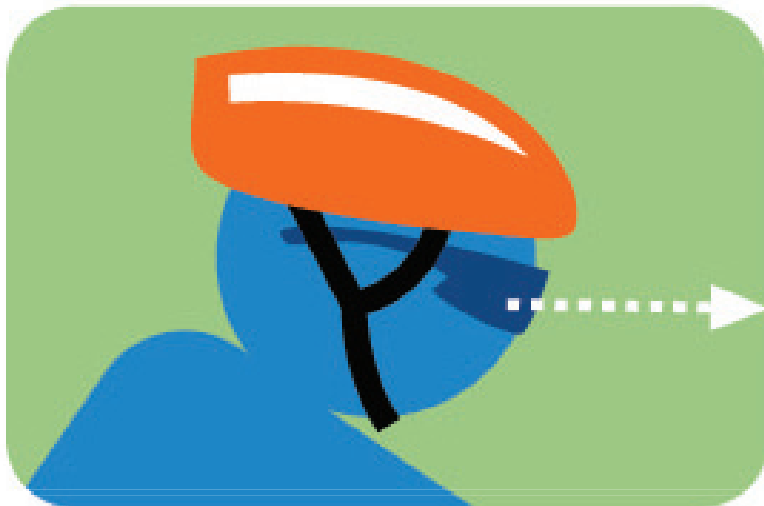
SHARROW



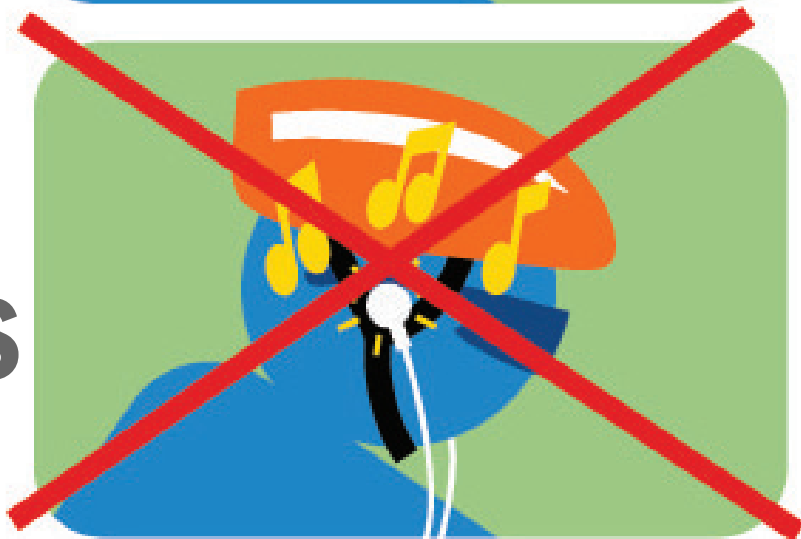
OBEY TRAFFIC SIGNS AND SIGNALS



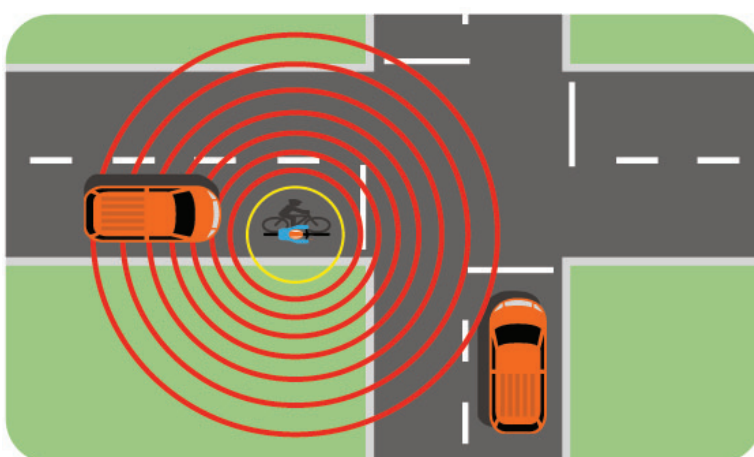
WEAR A HELMET AND MAKE EYE CONTACT



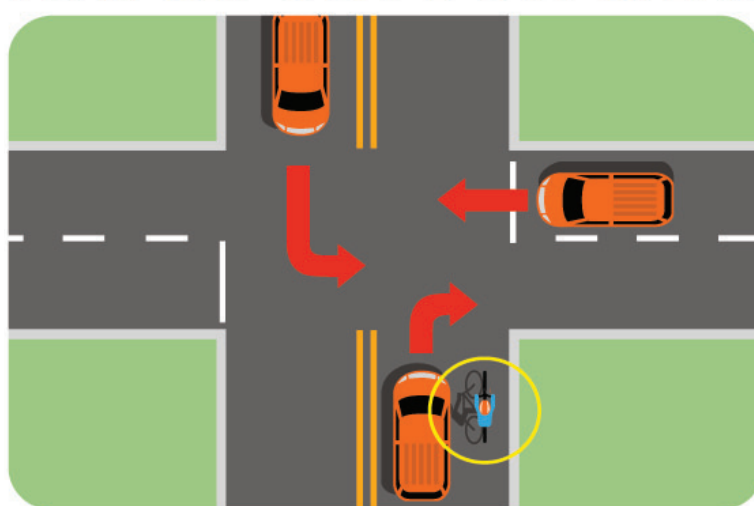
DON'T WEAR HEADPHONES



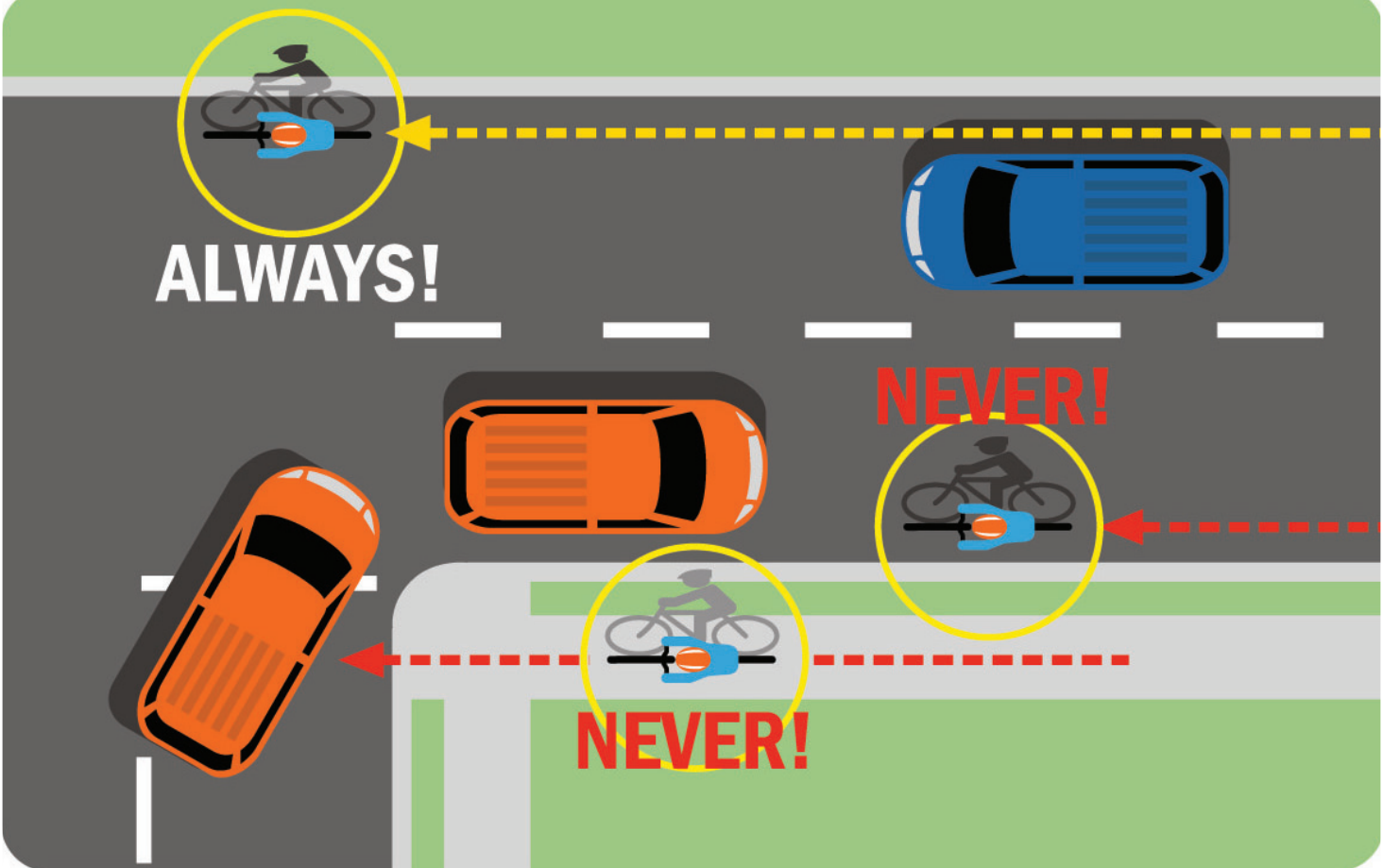
RIDE DEFENSIVELY



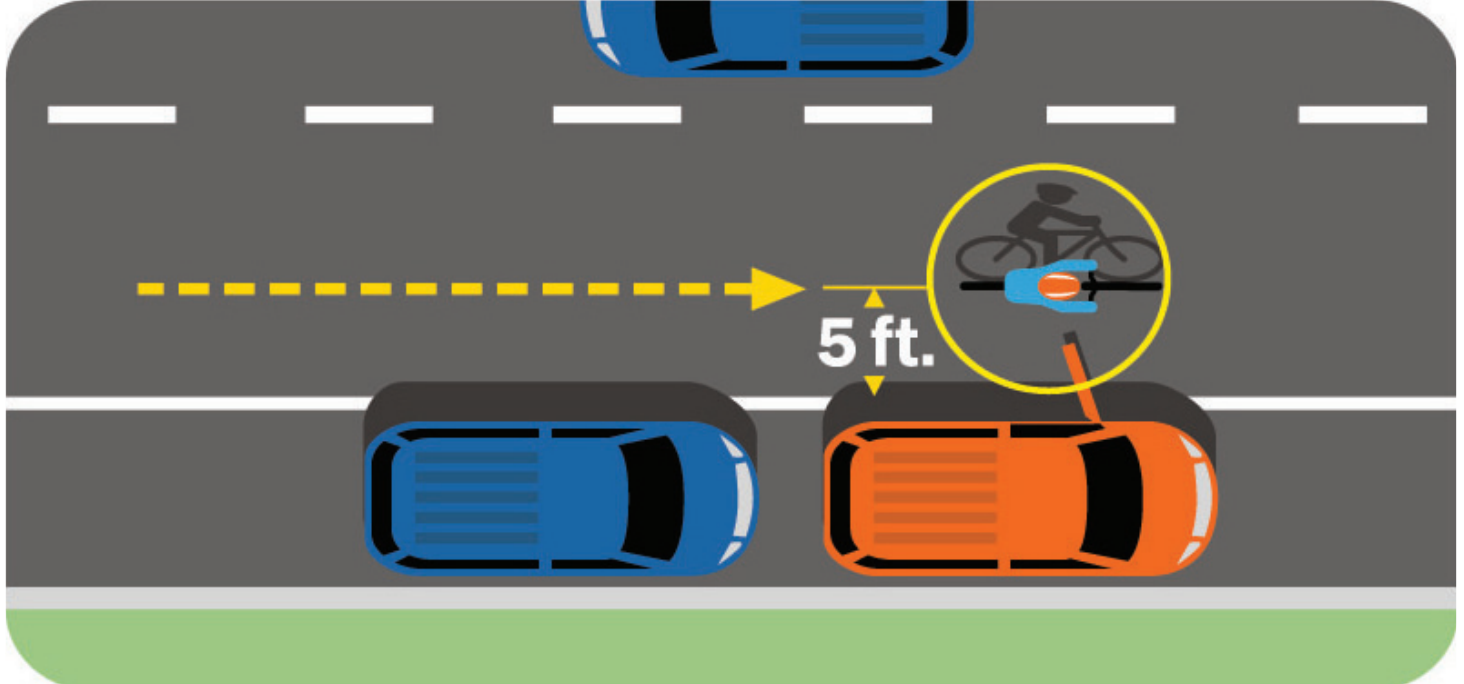
WATCH OUT FOR CARS



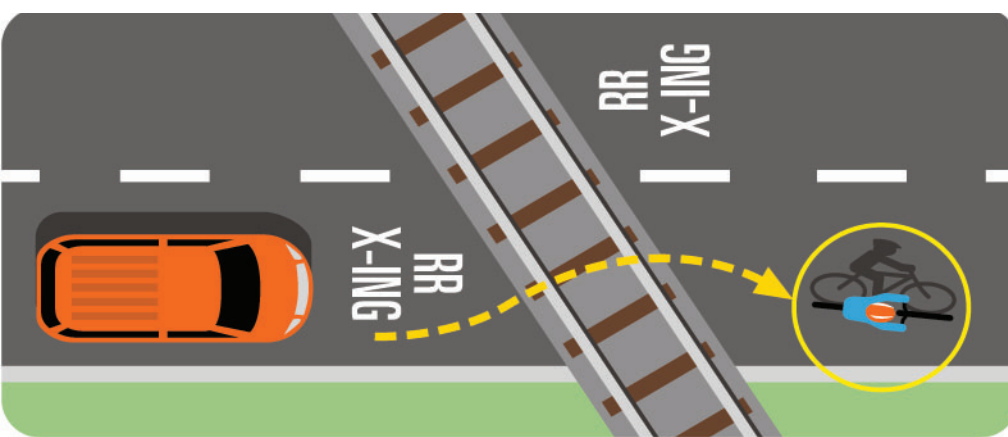
NEVER RIDE AGAINST TRAFFIC



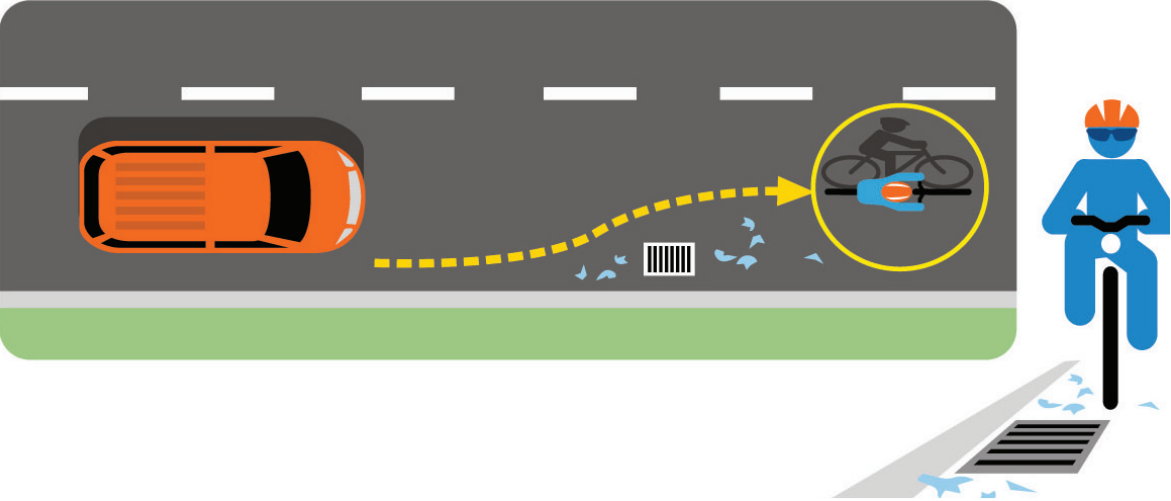
WATCH OUT FOR CAR DOORS



CROSS RAILROAD TRACKS AT A RIGHT ANGLE



KEEP AN EYE ON ROAD SURFACE



AVOID RIDING ON SIDEWALKS BE CAREFUL AT INTERSECTIONS RIDE IN A STRAIGHT LINE

HOW TO TURN LEFT

