

A wide-angle photograph of the Columbus, Ohio skyline at dusk. The sky is a clear, pale blue. In the foreground, a green park with a curved path and some trees is visible. A bridge spans a body of water in the middle ground. The skyline features several prominent skyscrapers, including the US Bank Tower and the Schieffelin Building.

CONNECT COLUMBUS

Building Columbus' Transportation Future

Workshop #3
July 16, 2015



Tonight's Agenda

1

Connect Columbus Process

2

Project Goals

3

Workshop 1 + 2 Recap

4

This Week's Work

5

Discussion

Connect Columbus Process

Our Process



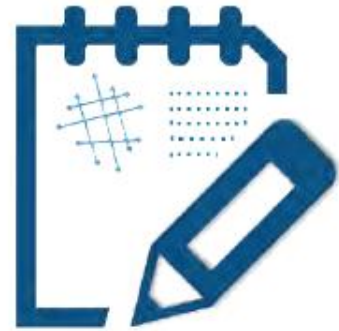
1. Discovery



2. Desire

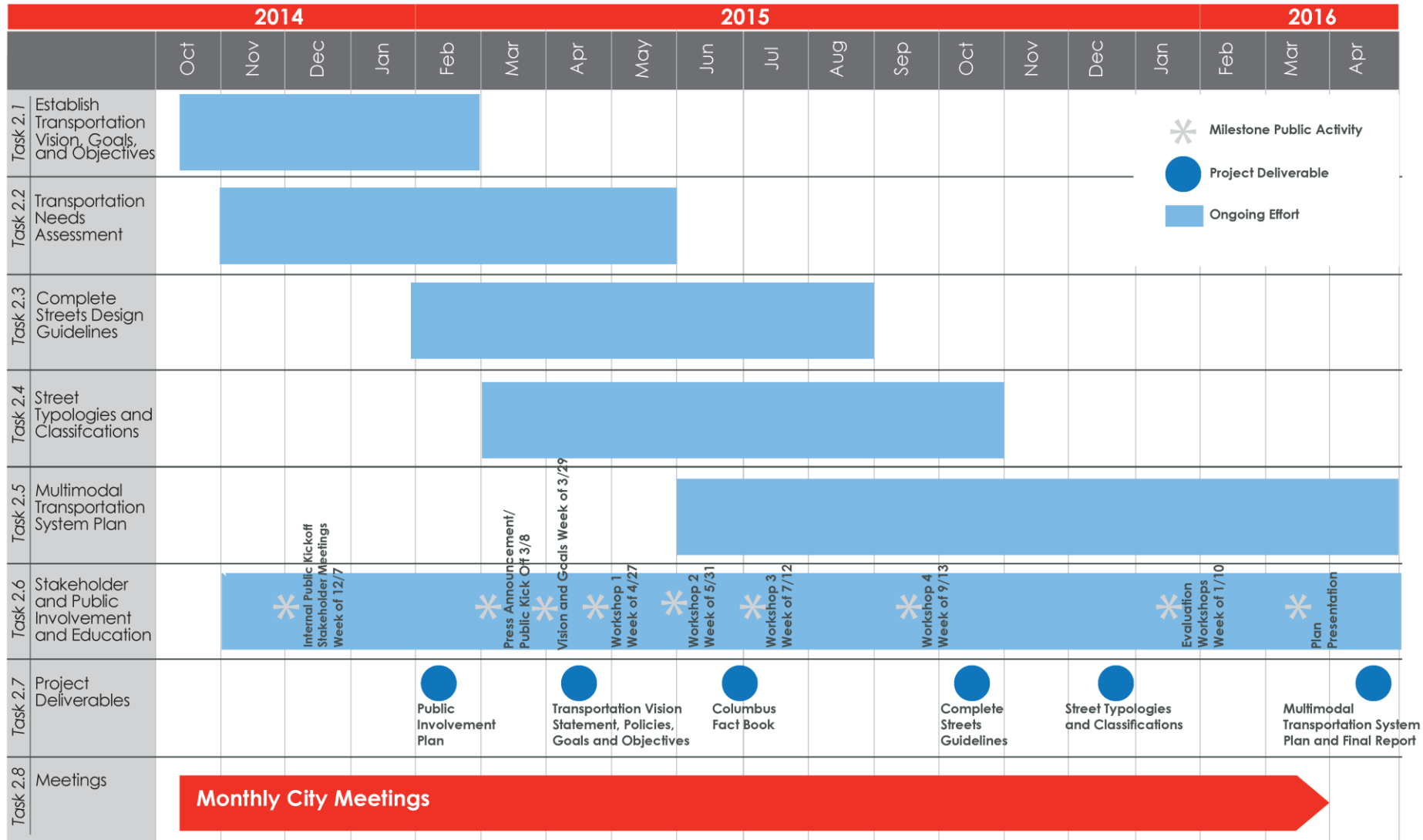


3. Design

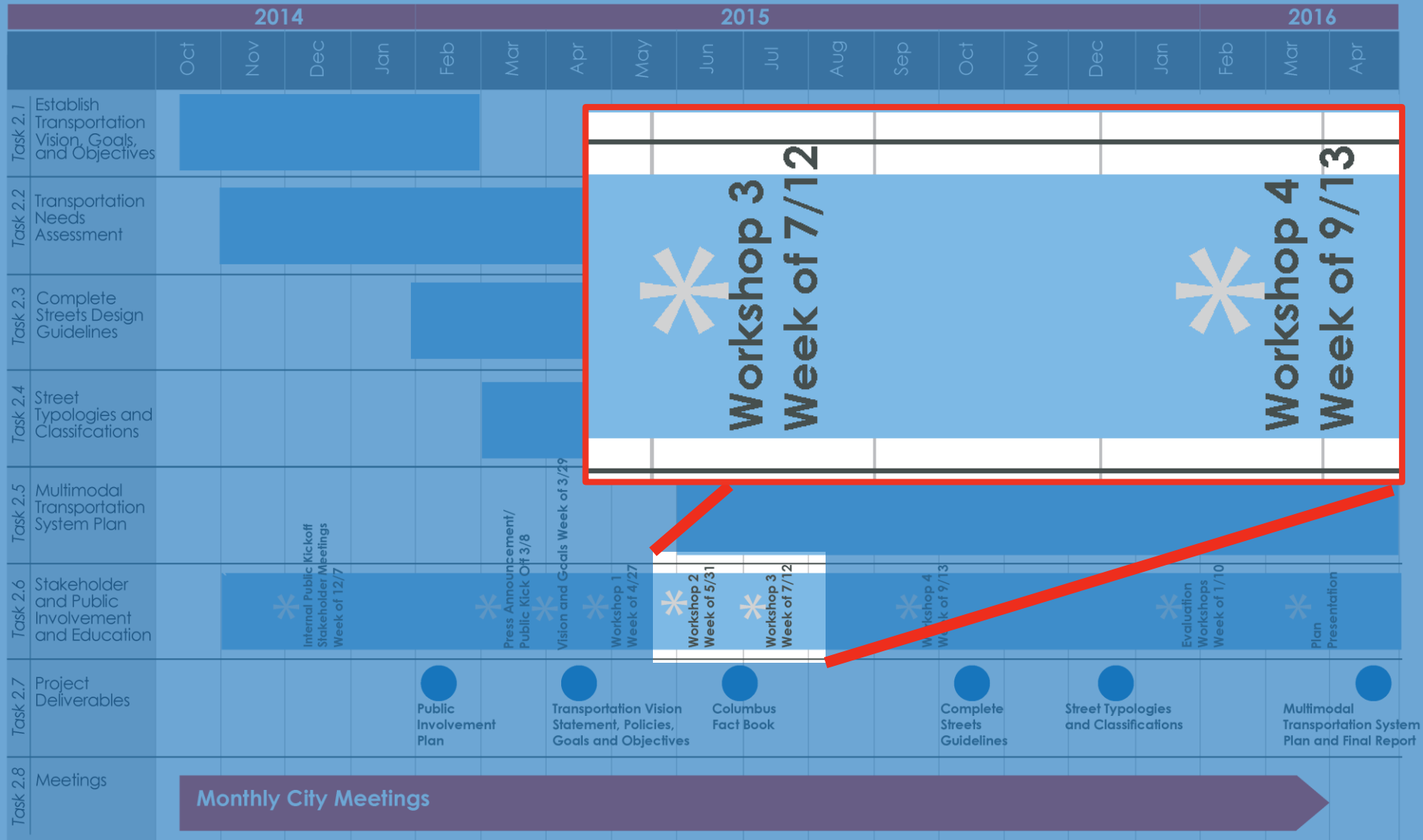


4. Documentation

Project Schedule



Project Schedule



Project

Goals



4 Community Meetings



Proposed Final Goals

- **Neighborhood Vitality:** Through placemaking and community development, be responsive to neighborhood's character and needs.
- **Health and Safety:** Balanced access for walking, biking, and active transportation that promotes health, safety, and well-being
- **Equitable Access:** Provide quality transportation choices that are socially and economically inclusive of all.
- **Sustainability:** Promote sustainable and renewable transportation options, aimed at reducing resource consumption.
- **Economic Development:** Build infrastructure to attract and retain jobs and minds, while connecting and enhancing access.
- **Fiscal Sustainability:** Prioritize transportation investments that can be sustained long term

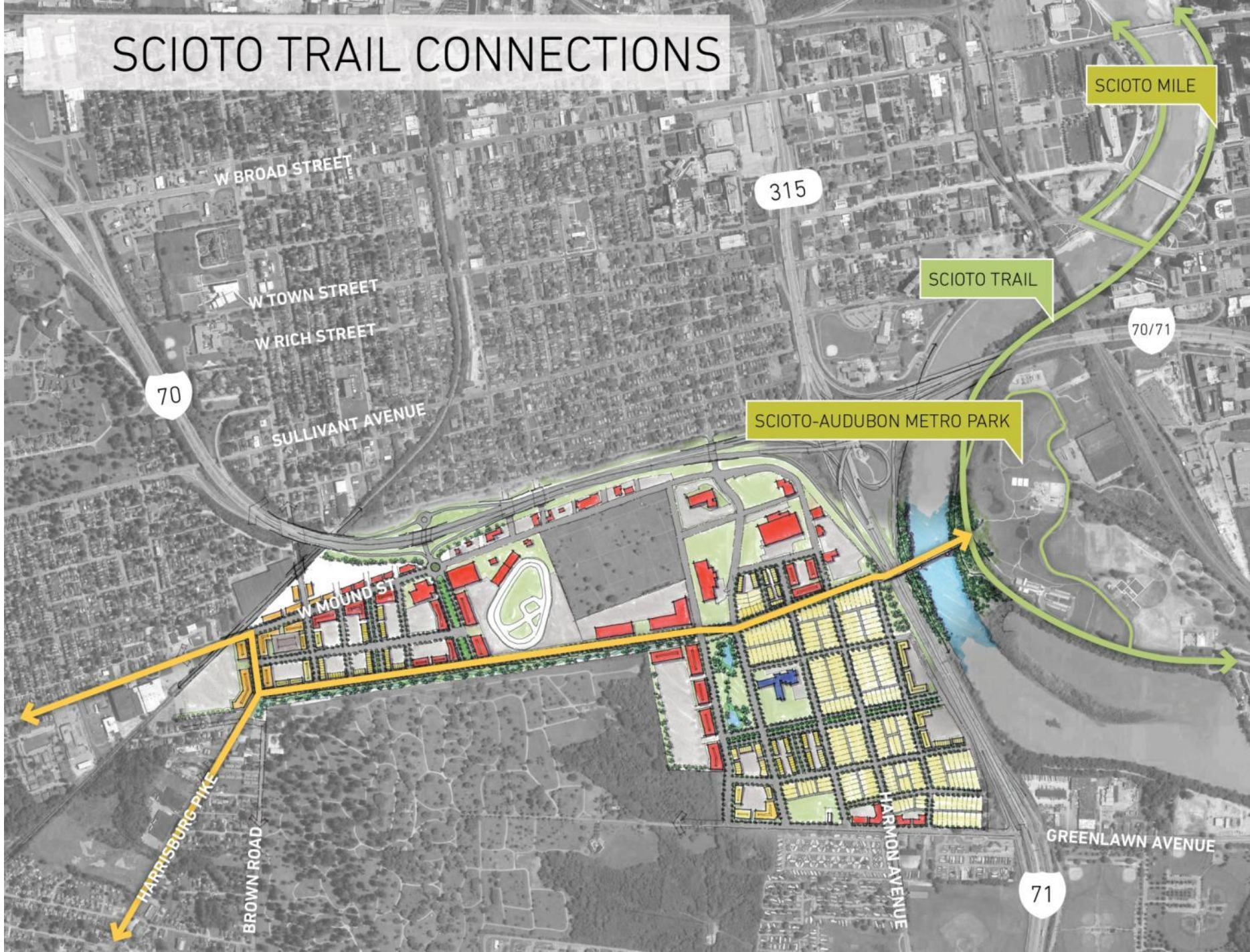
Workshops

One + Two

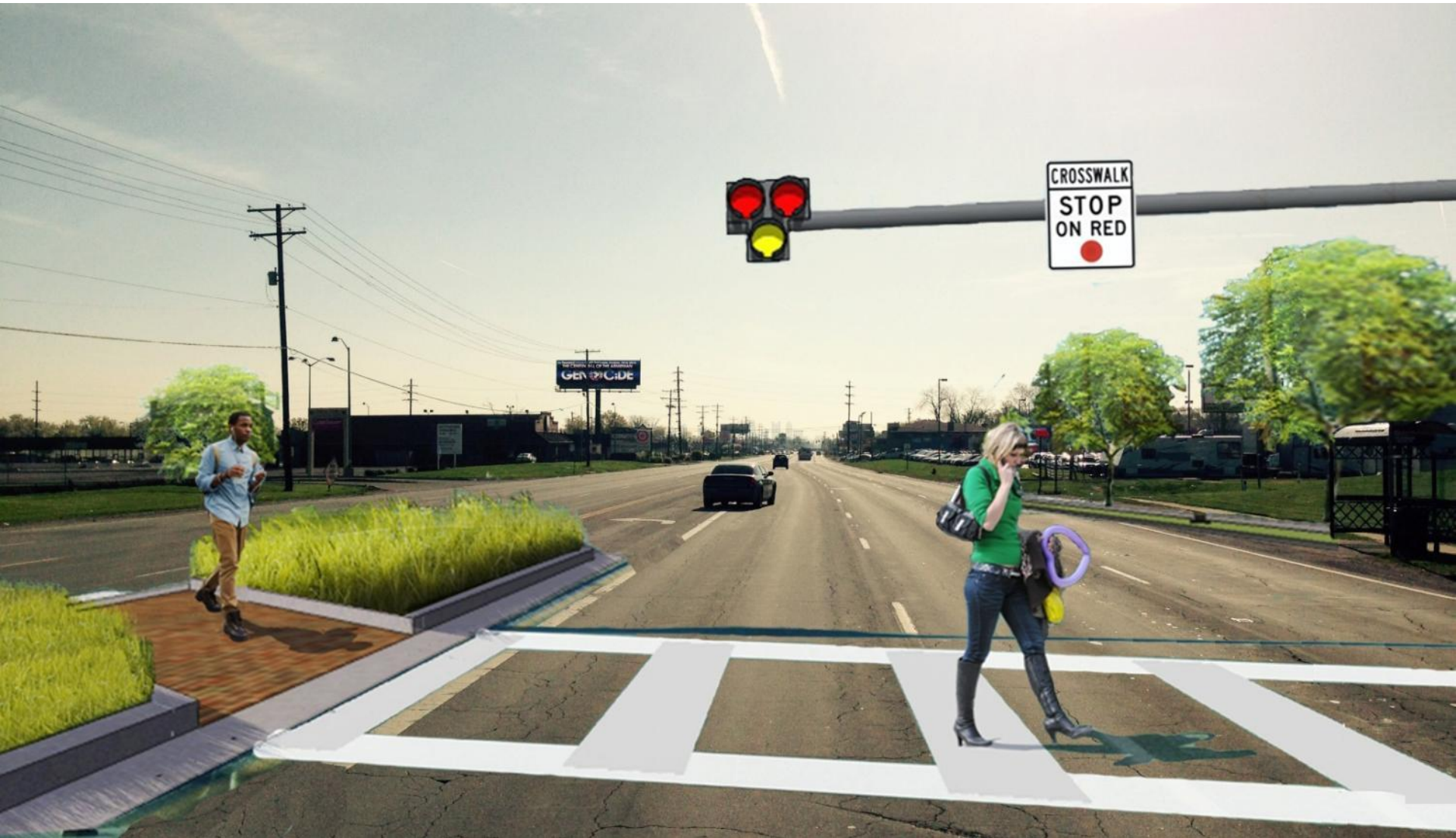
WHAT ARE THE WORKSHOPS ABOUT?

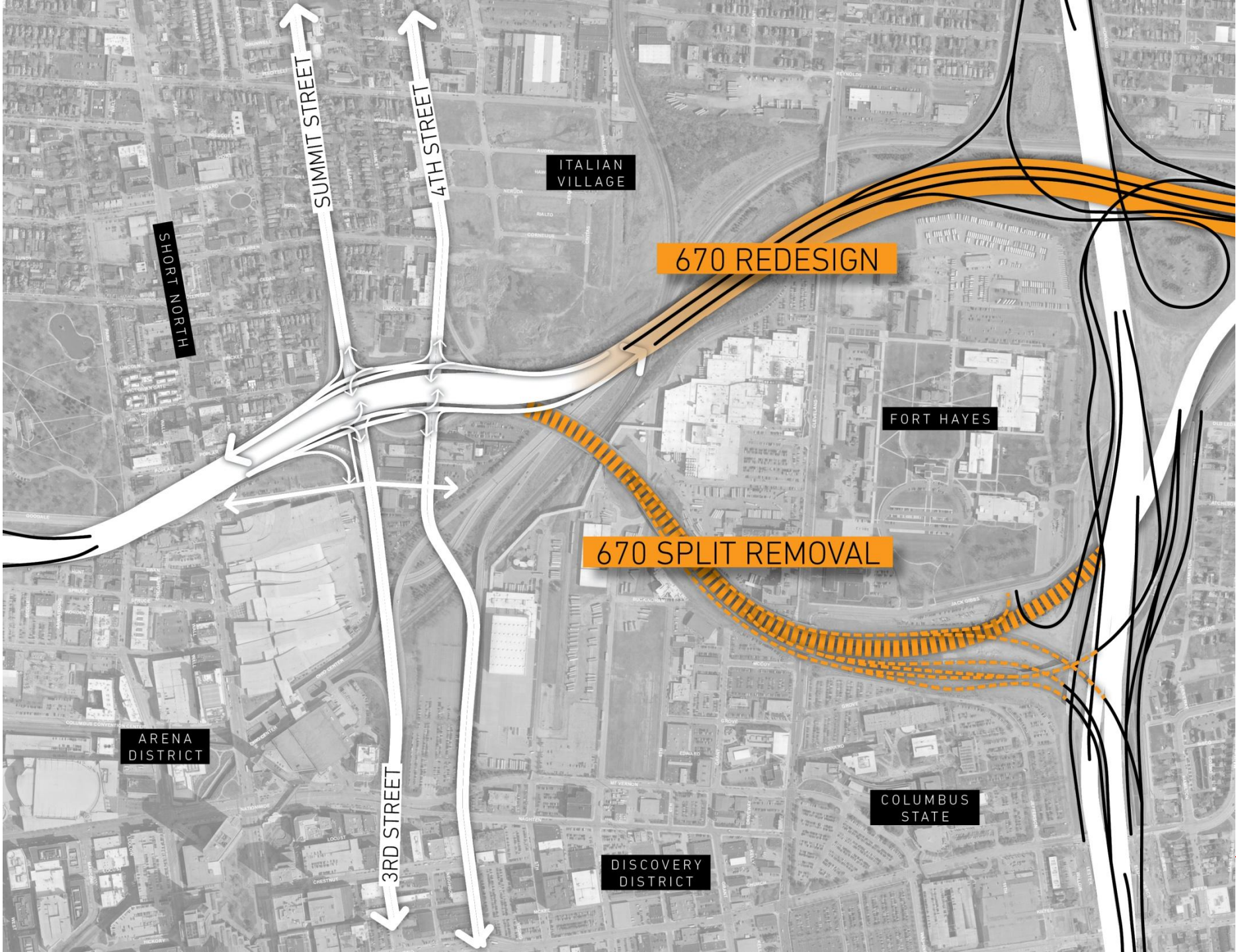
IDEAS
NOT
RECOMMENDATIONS

SCIOTO TRAIL CONNECTIONS



Protected Crossing – Broad Street





SHORT NORTH

SUMMIT STREET

4TH STREET

ITALIAN VILLAGE

670 REDESIGN

FORT HAYES

670 SPLIT REMOVAL

ARENA DISTRICT

3RD STREET

DISCOVERY DISTRICT

COLUMBUS STATE



TRAIL CONNECTION

SIMPLIFIED 315 ACCESS

RIVERSIDE METHODIST
HOSPITAL

W NORTH BROADWAY

INTERCONNECTED
STREET NETWORK

SIMPLIFIED 315 ACCESS

W NORTH BROADWAY

UNION
CEMETERY

OLENTANGY RIVER ROAD

OLENTANGY RIVER

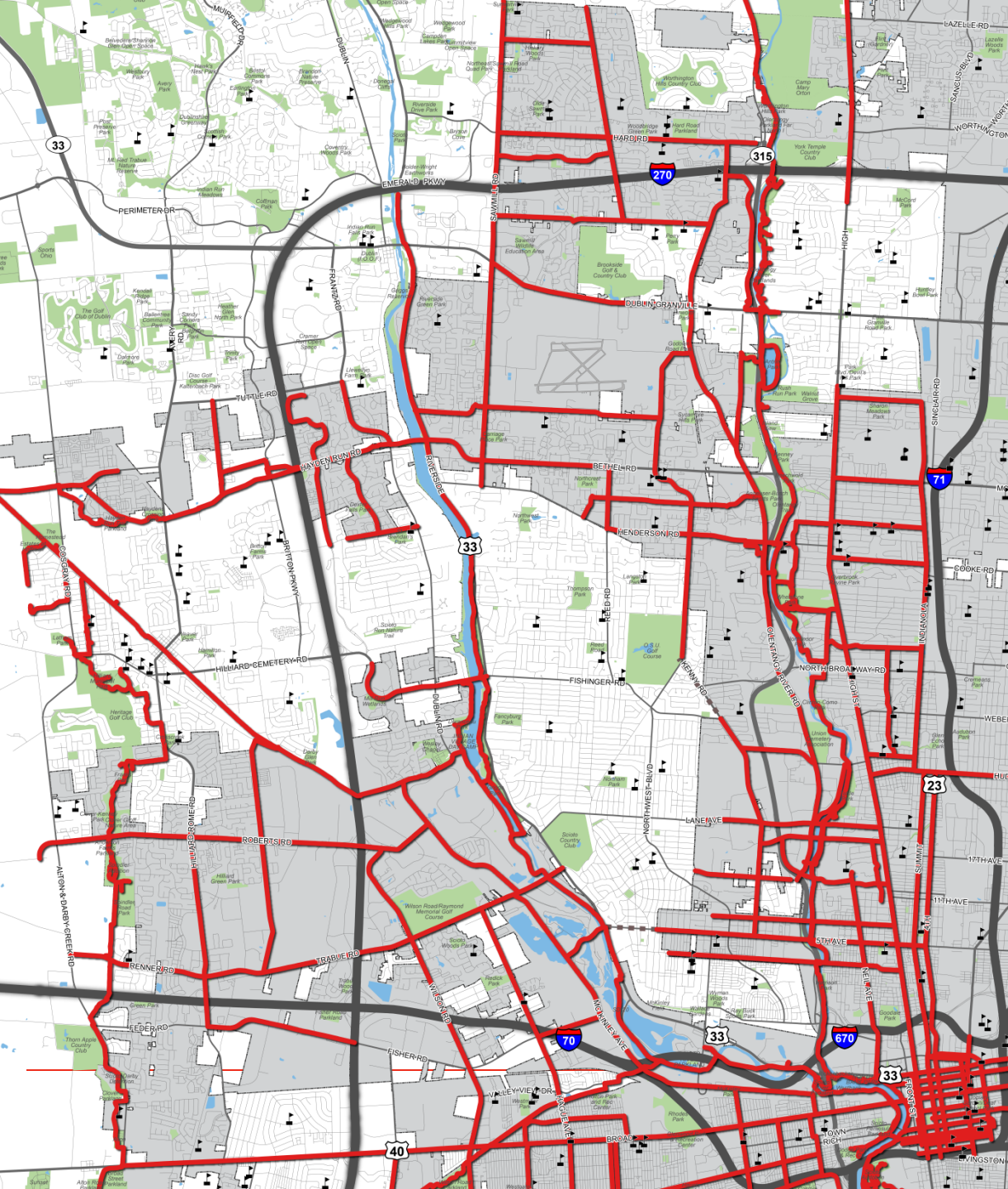
SR 315

Kenny Road

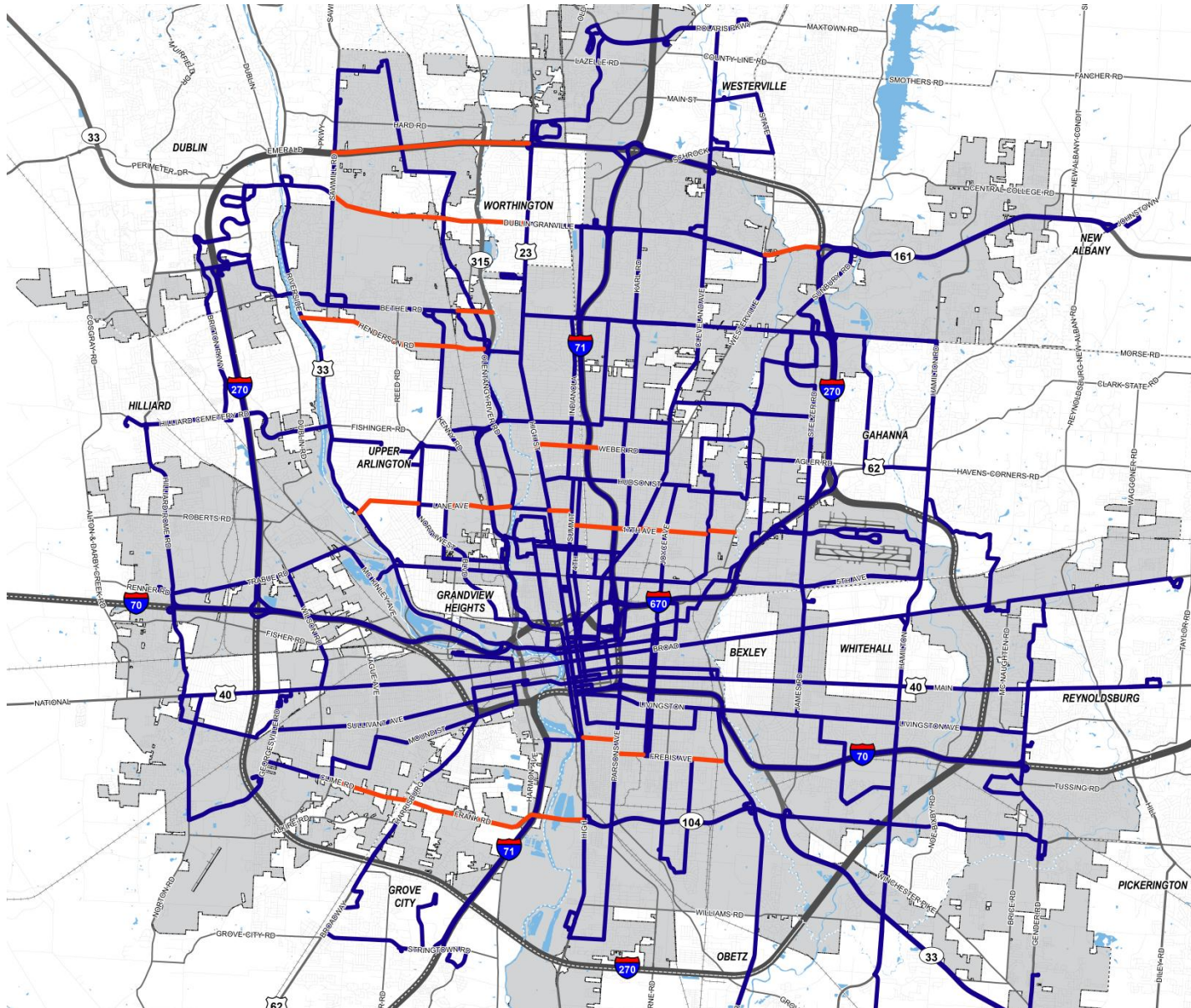


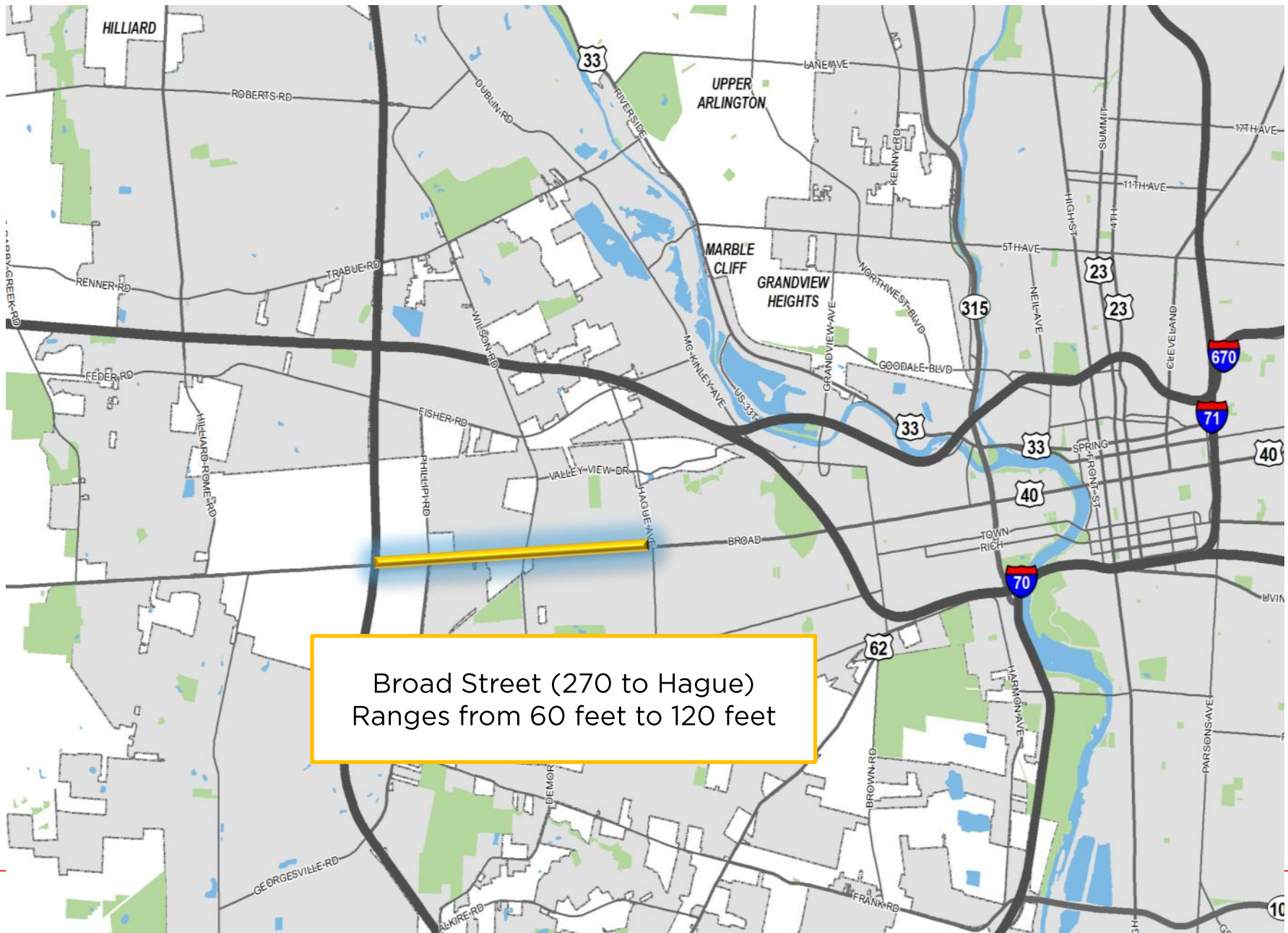


Mound Street



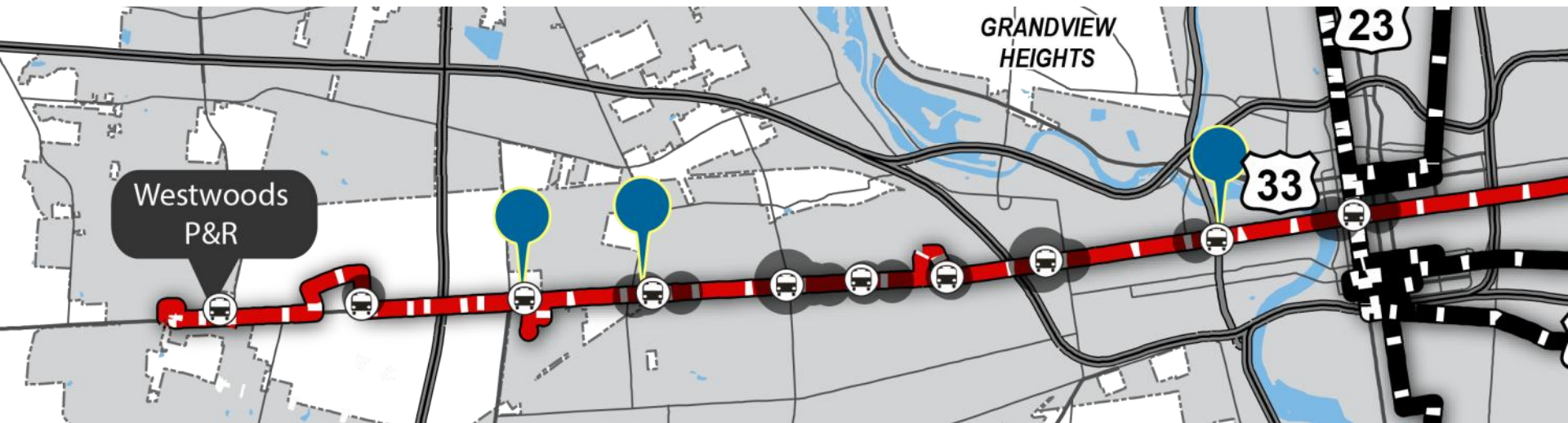
Potential Cross-Radial Connections



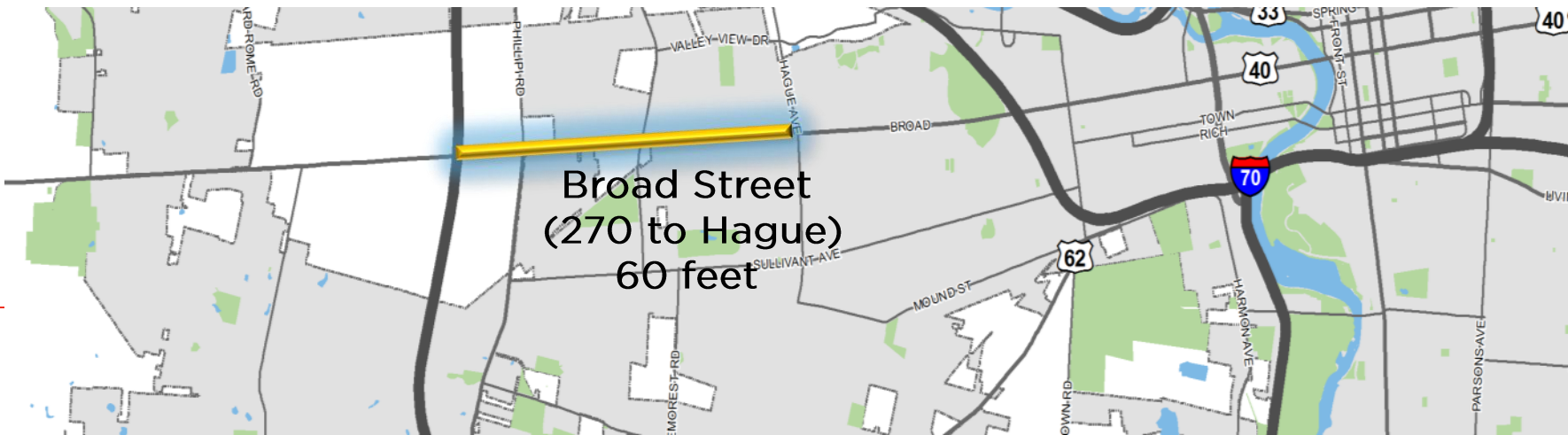


Broad Street (270 to Hague)
Ranges from 60 feet to 120 feet

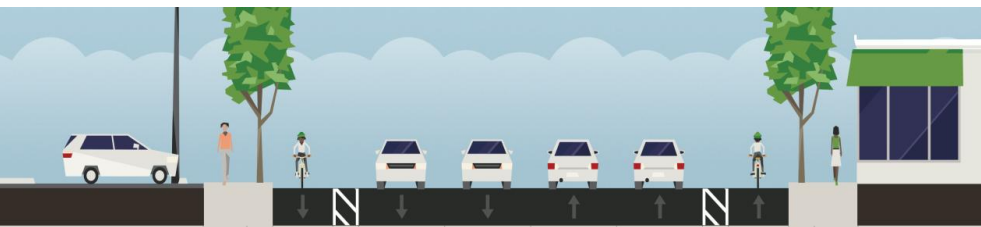
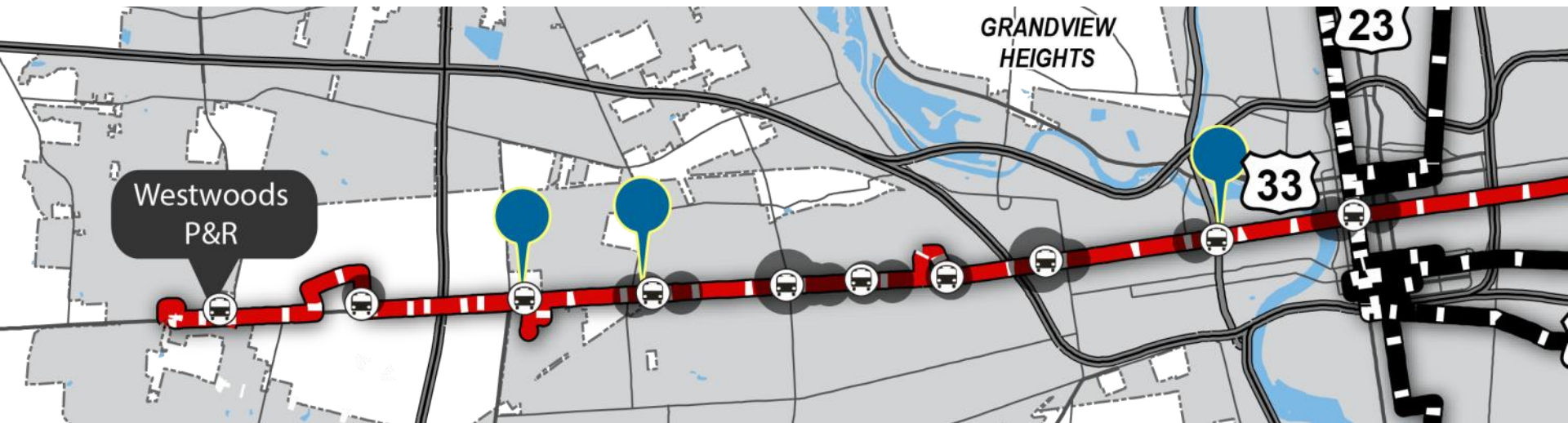
West Broad – Many Options



Broad Street
Ranges from 60 feet to 120 feet



West Broad – Many Options

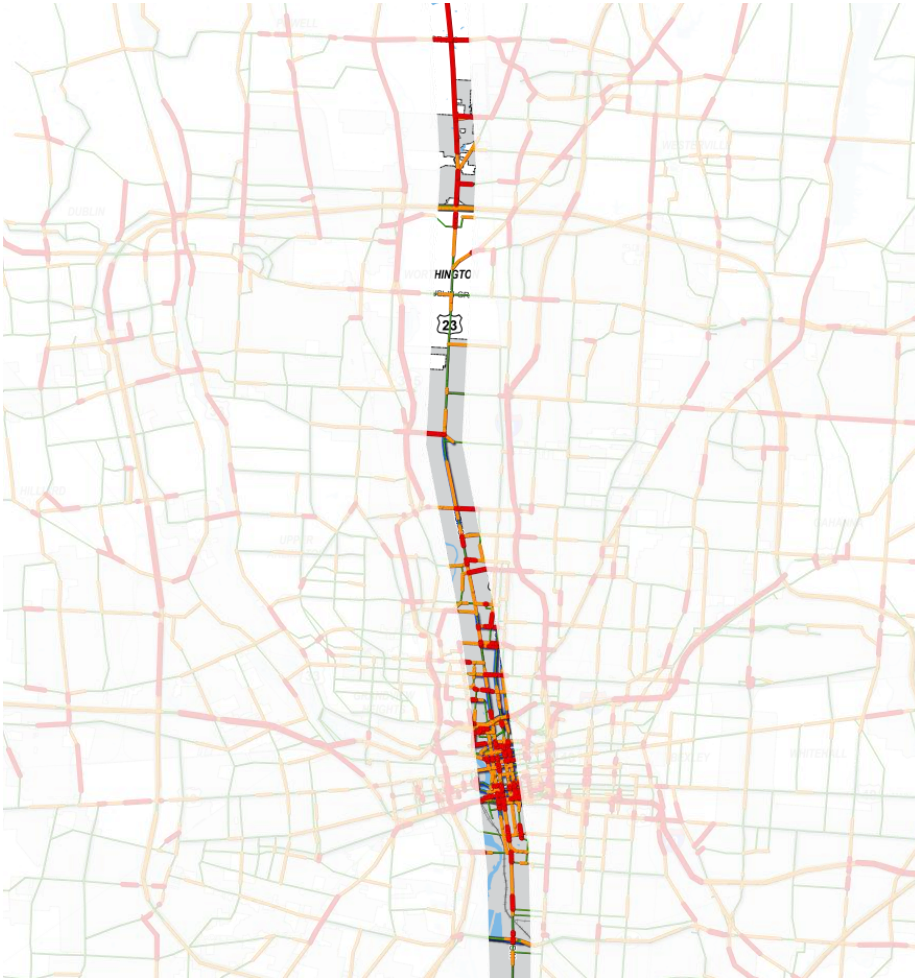


W Broad (Powell and Chase) Proposed Bicycle



Ranges from 60 feet to 120 feet

High Street - Many Options



Emphasis

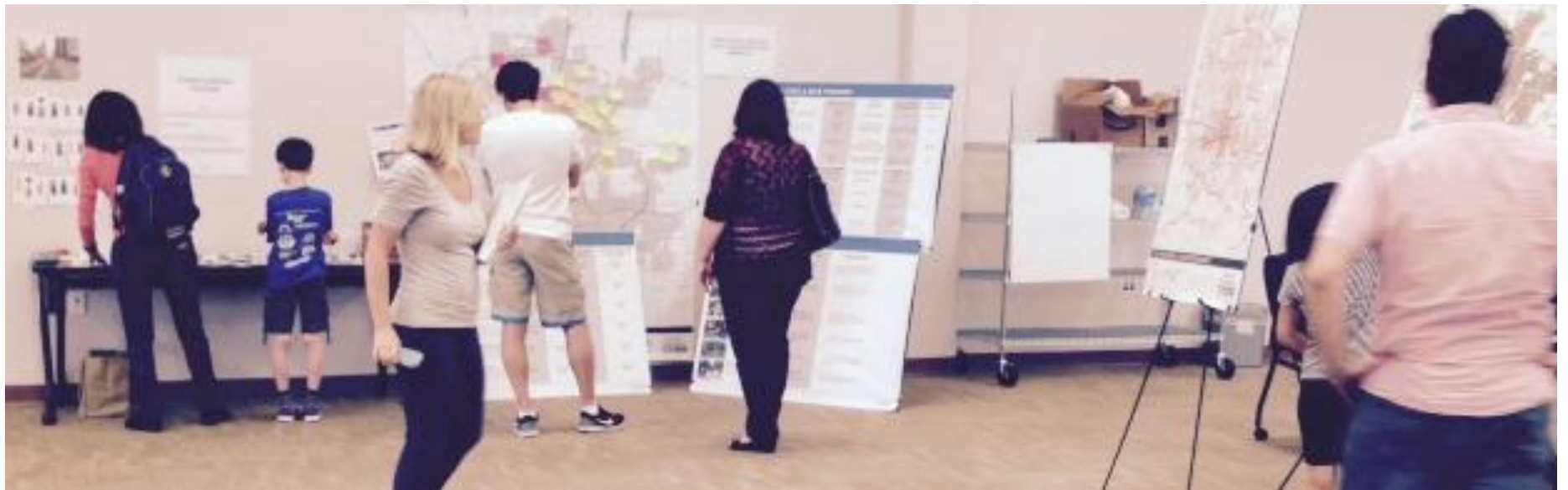
- Pedestrians
- Business
- Transit
- Driving

Transit Options

- Frequent Bus
- Bus Rapid Transit
- Streetcar
- Light Rail

Workshop

Three

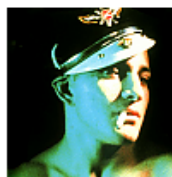




TAGS:

ALTERNATIVE TRANSPORTATION , BRENT WARREN , CONNECT COLUMBUS , DOWNTOWN , LIGHT RAIL , NELSON NYGAARD , PAUL MOORE , RAIL , SHORT NORTH , TRANSIT , TRANSPORTATION

29 Responses to *Underground Light Rail Idea Presented as Connect Columbus Initiative Continues*



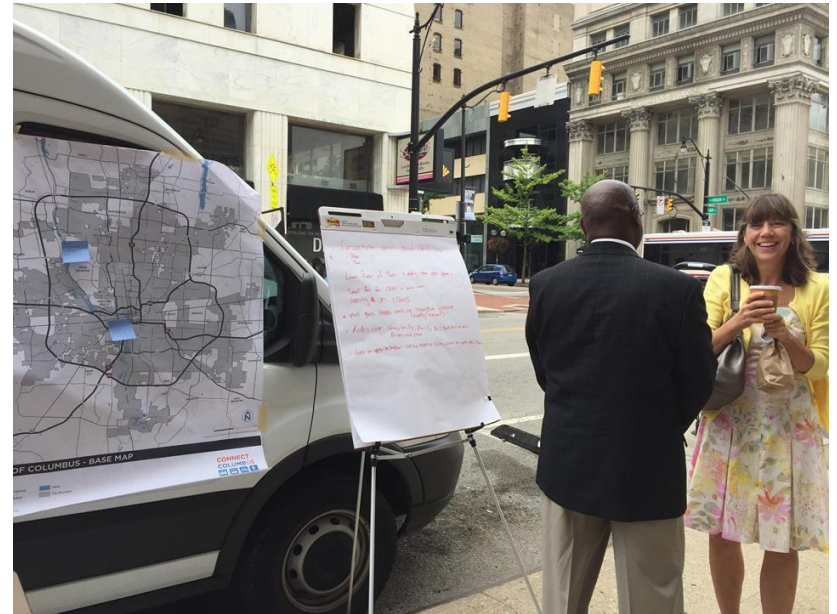
heresthecasey

July 14, 2015 12:37 am at 12:37 am

Definitely worth it, though I'd want the tunnel portion to run further north to around Arcadia/Dodridge.



This Week - Plan Van



This Week - Plan Van



Yay Bikes! Ride on Friday!



Yay Bikes!

3 hrs · 🌐

Free tomorrow morning? Help understand and influence good road design for the next 30 years with Connect Columbus. #letsride



Connect Columbus Design Workshop 3: Yay Bikes! Bike Ride Event

Connect Columbus Design Workshop Ride Event | Yay Bikes!

Connect Columbus Design Workshop 3: Yay Bikes!
Calendar Tickets Add to Calendar Add to Timely Cal

WHEN: July 17, 2015 @ 9:30 am – 11:30 am

WHERE: Franklin County Board of Elections
1700 Morse Road
Columbus, OH 43229
USA

COST: Free, but registration required

CONTACT: Meredith Joy
 614-403-4557
 Email
 Event website

Back to Calendar

Tickets

Add to Calendar ▼



ADVOCACY

INFRASTRUCTURE

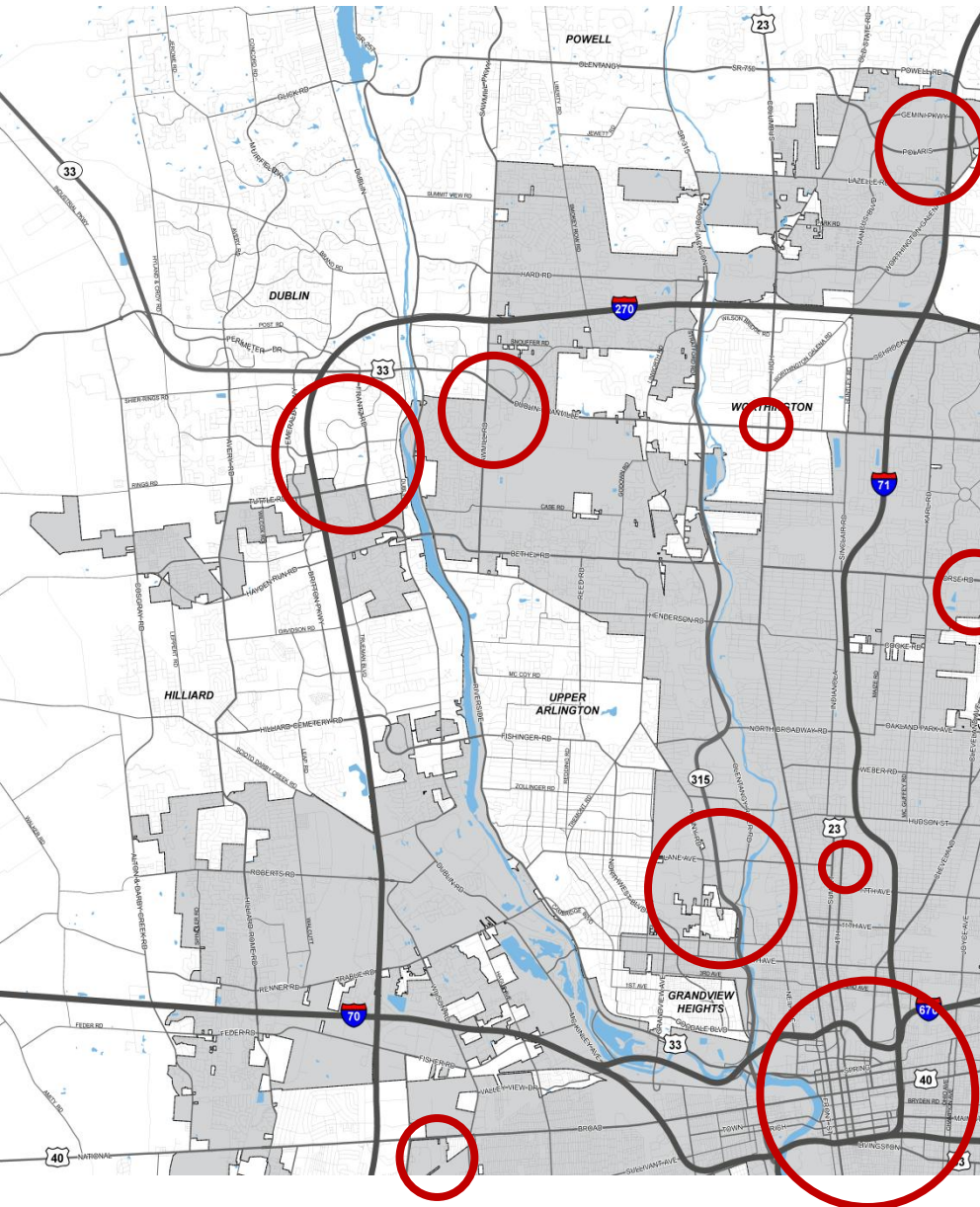
PARTNER EVENT

This Week's

Work

Options and Ideas

Household Trips



60% OF HOUSEHOLD TRIPS
ARE **5 MILES OR LESS** IN LENGTH.

Source: NHTSA

85% OF THESE
ARE DRIVEN
A DISTANCE THAT IS EASILY VIABLE BY
BICYCLE, TRANSIT OR WALK.

Source: NHTSA

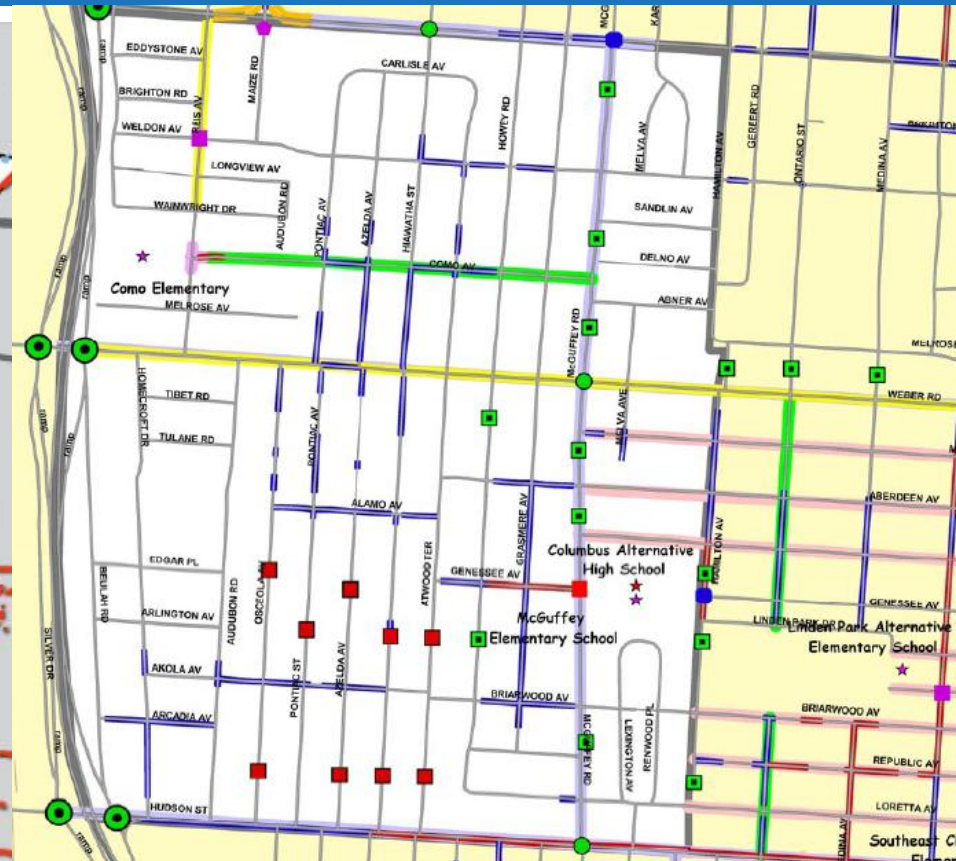
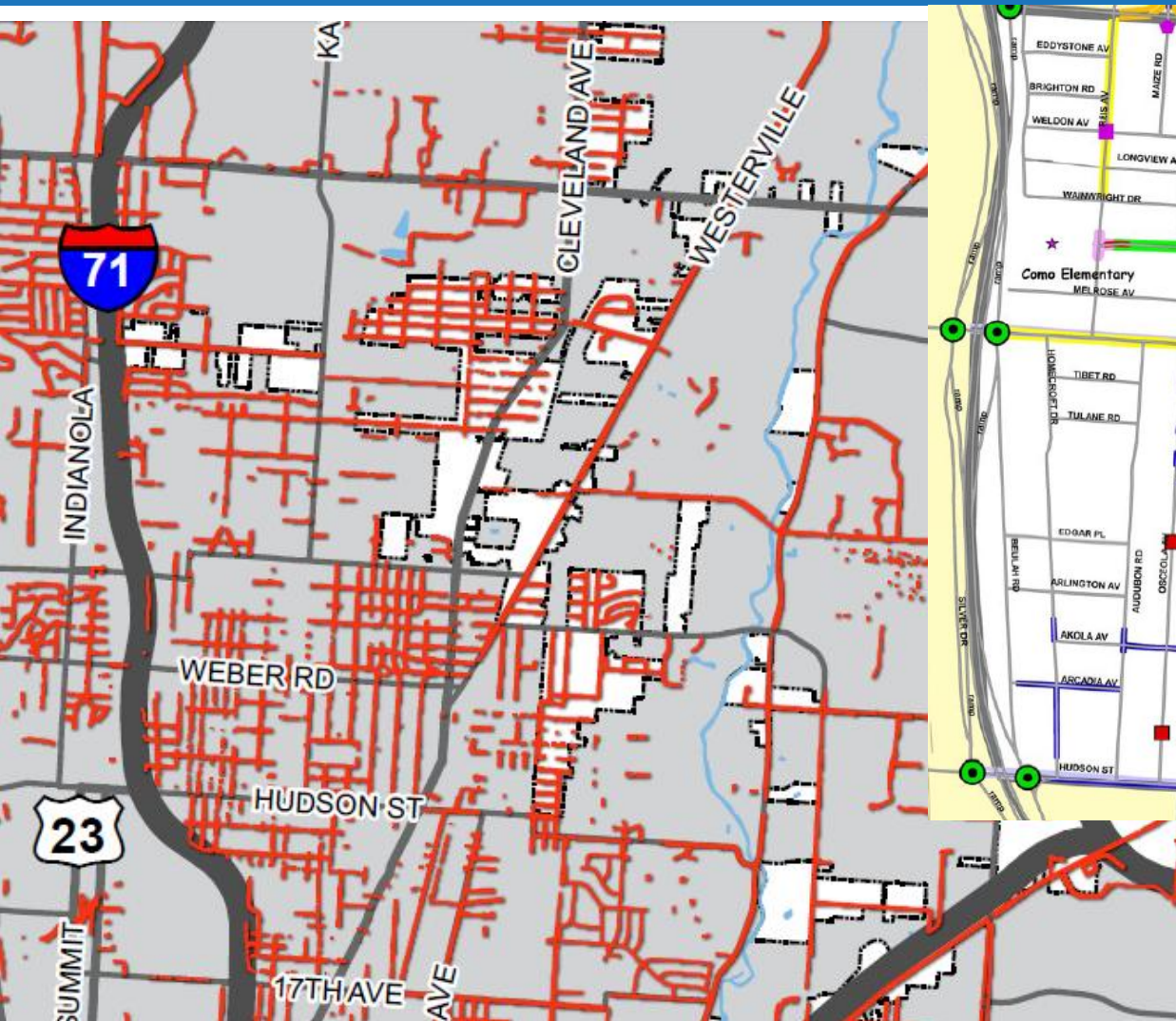
1 IN 6 HOUSEHOLD
TRIPS ARE
COMMUTE
TRIPS

Source: AASHTO

**CONNECT
COLUMBUS**

Walking in Northeast Columbus

Sidewalk Infrastructure

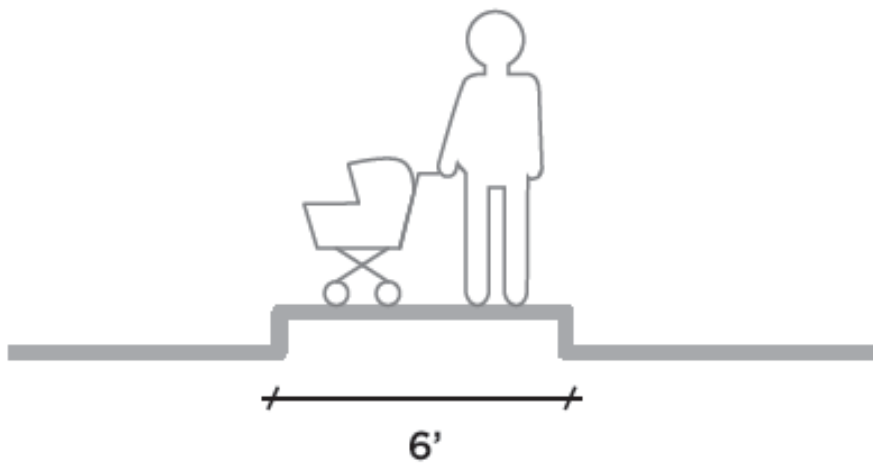


Linden Area Traffic Management Plan

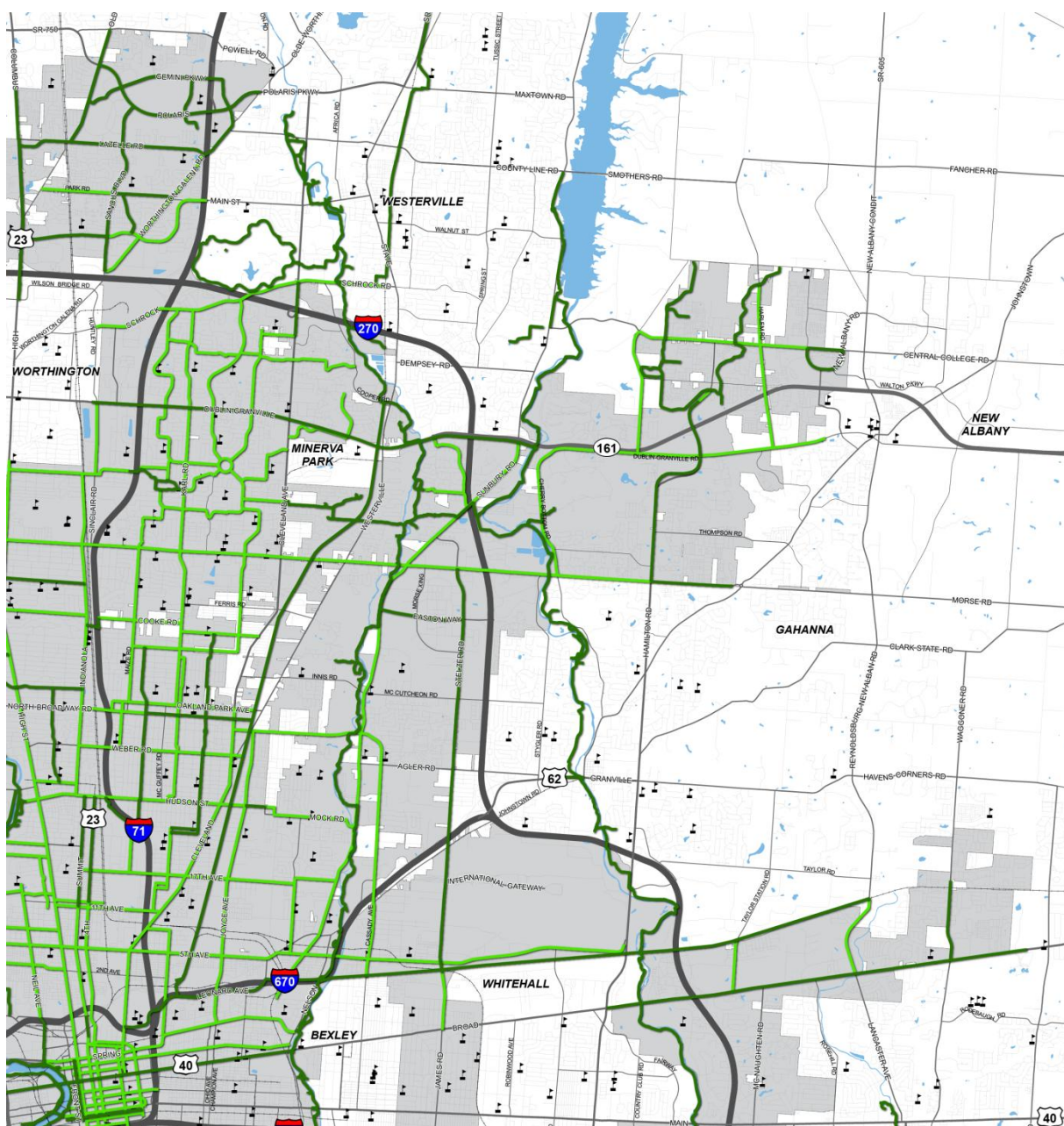
Linden Area Traffic Management Plan

- 1st TMP in Columbus
- Key recommendations:
 - Slow speeds through traffic calming
 - Reduce posted speeds on certain streets
 - Complete sidewalk system, prioritize schools, senior centers, shopping, etc.





Biking in Northeast Columbus



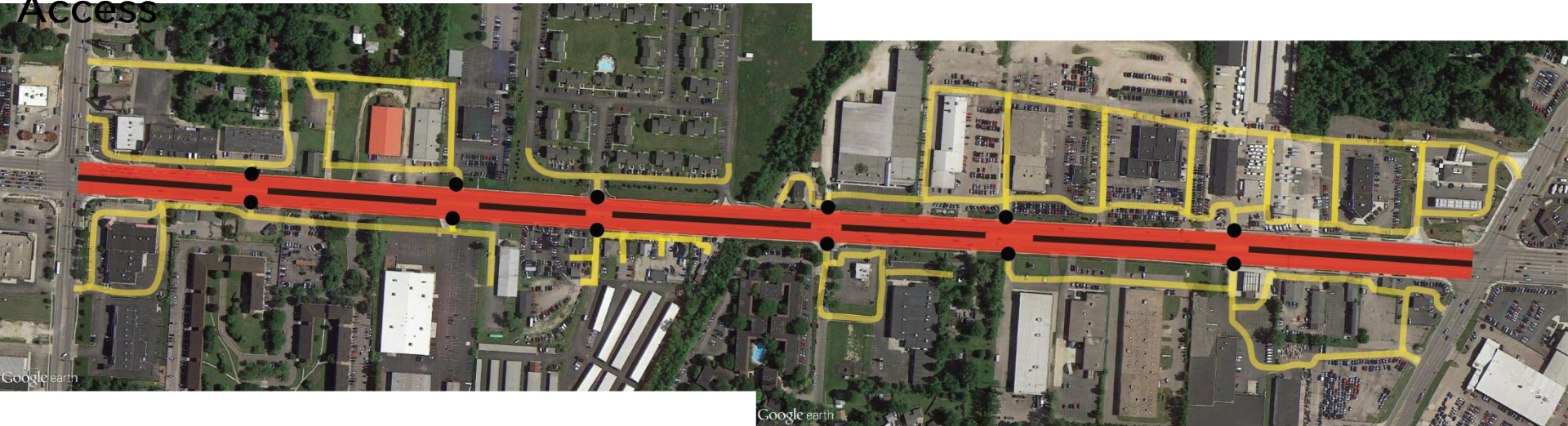
Morse Road - Existing

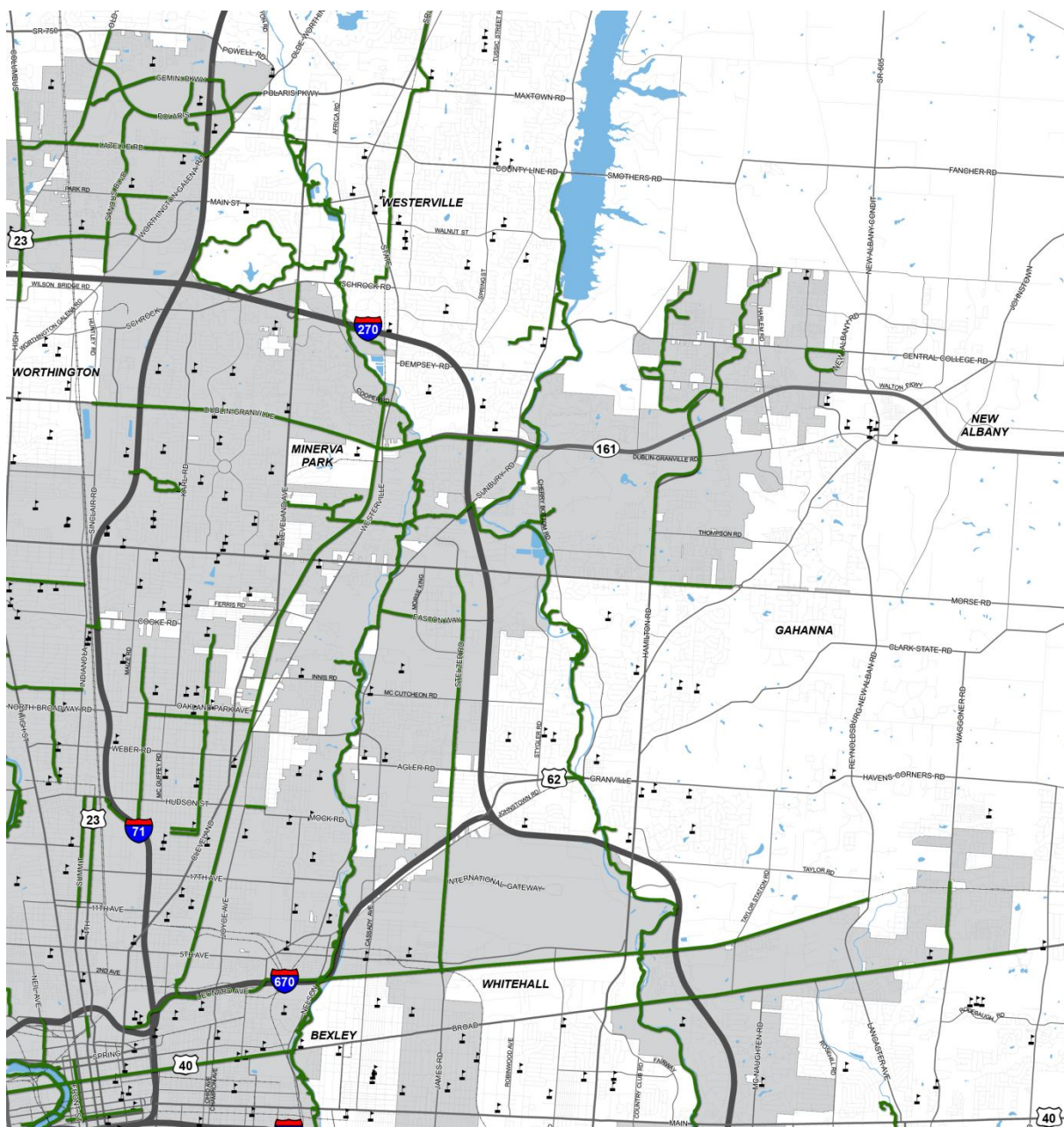


Morse Road - Existing



Morse Road - Managed Access





**CONNECT
COLUMBUS**

Safety

Billiter Blvd



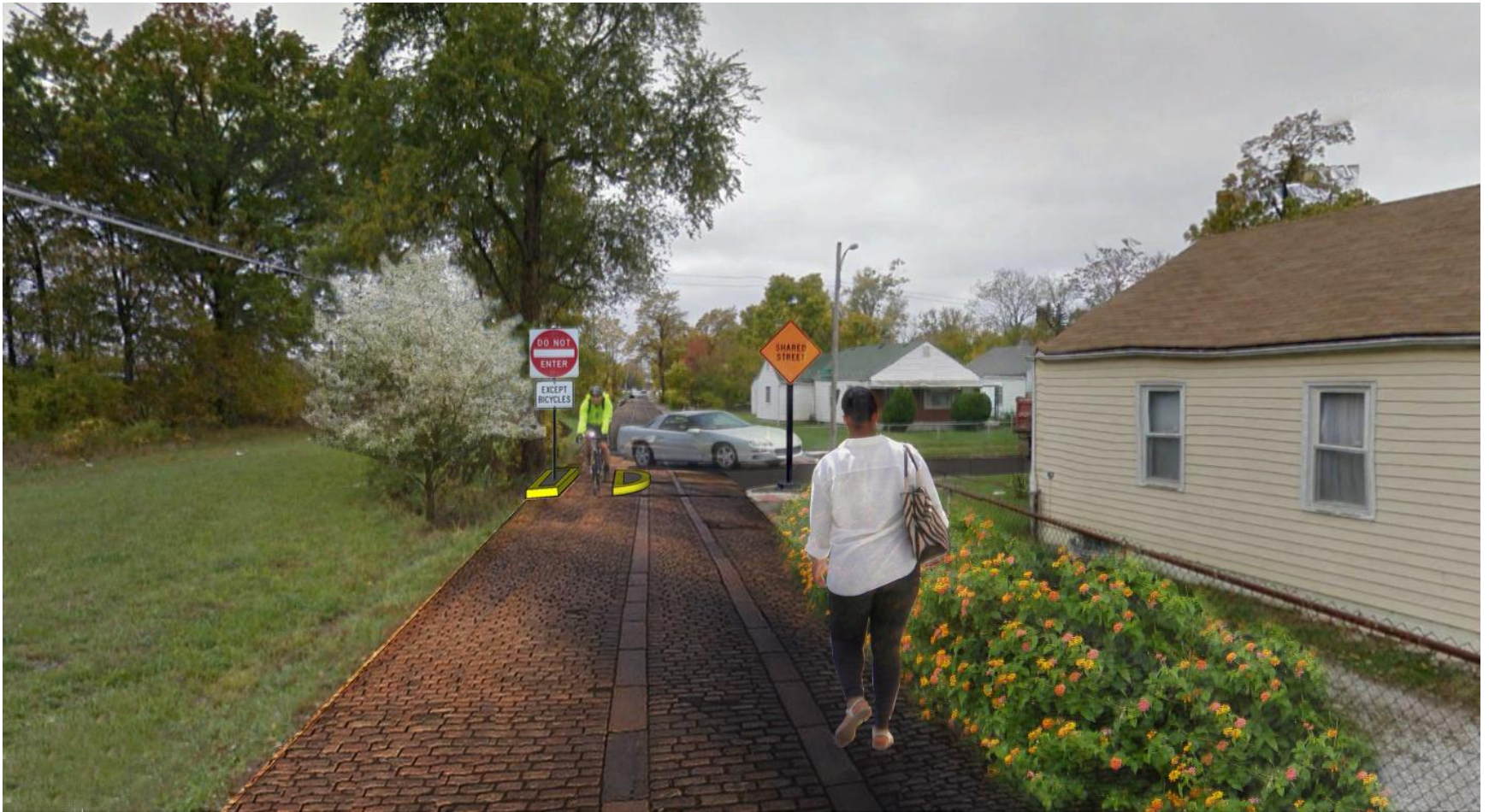
Google earth

© 2015 Google

Billiter Blvd Shared Street



Billiter Blvd Shared Street



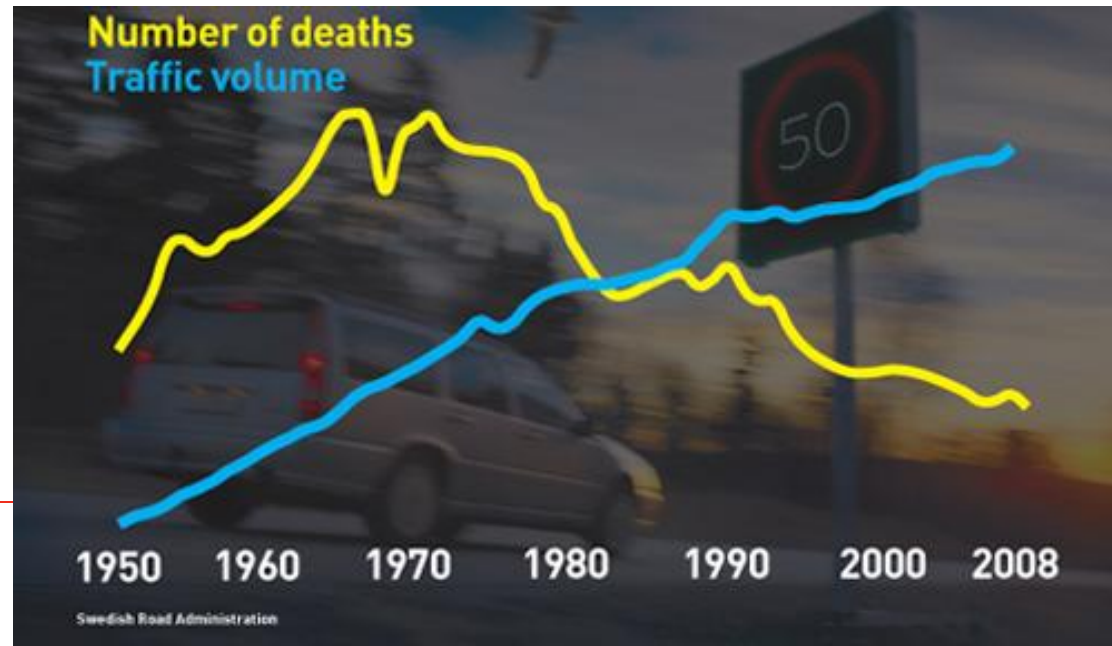
Premise: No loss of life is acceptable

Approach

- 1. Preserve Freedom to Move**
- 2. Manage Speeds**
- 3. Build Safety into Design**

**86% of Ohio
Drivers
Support
These
Policies**

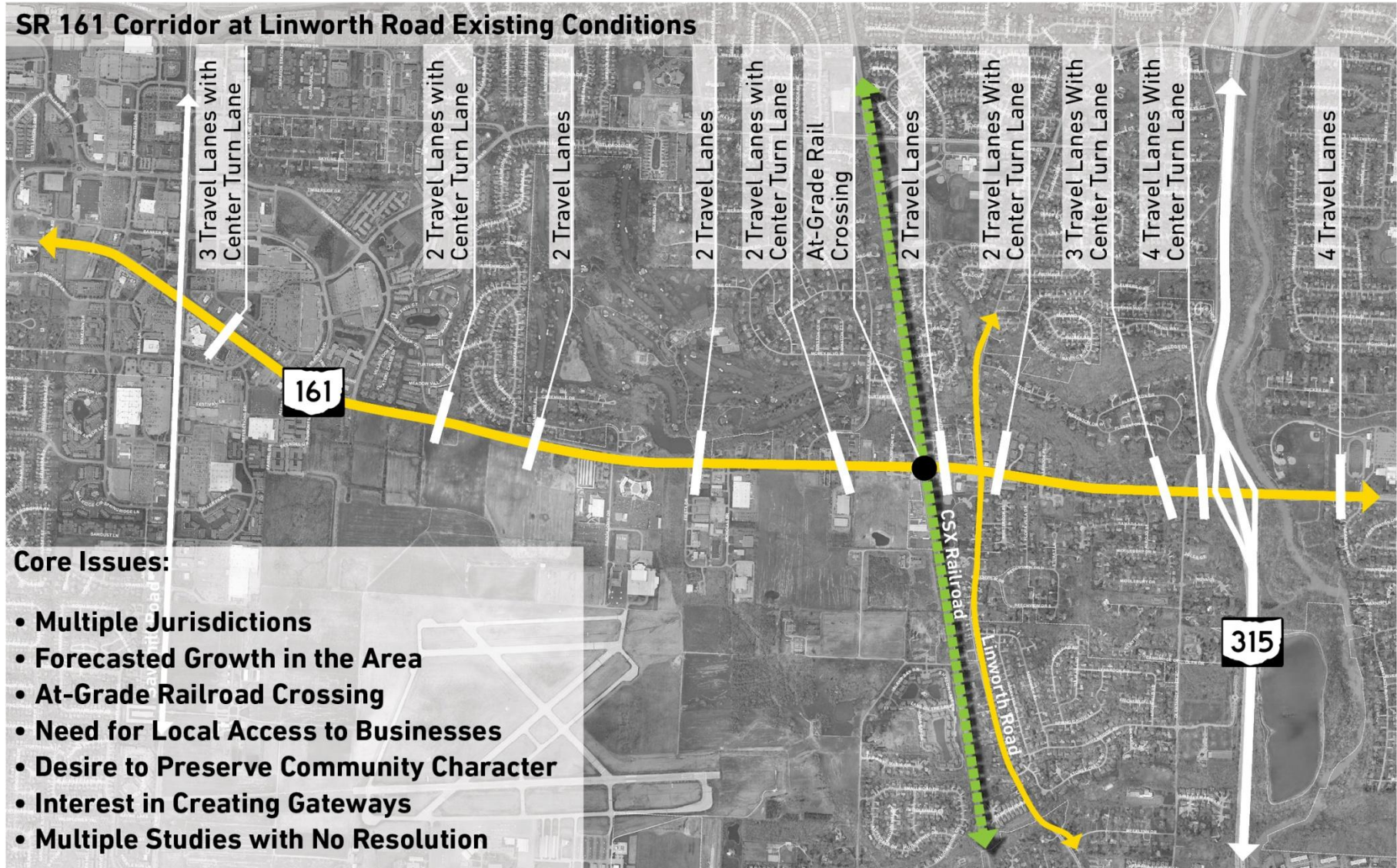
Source: AAA of Ohio



Congestion in Northeast Columbus

Dublin-Granville Road

SR 161 Corridor at Linworth Road Existing Conditions



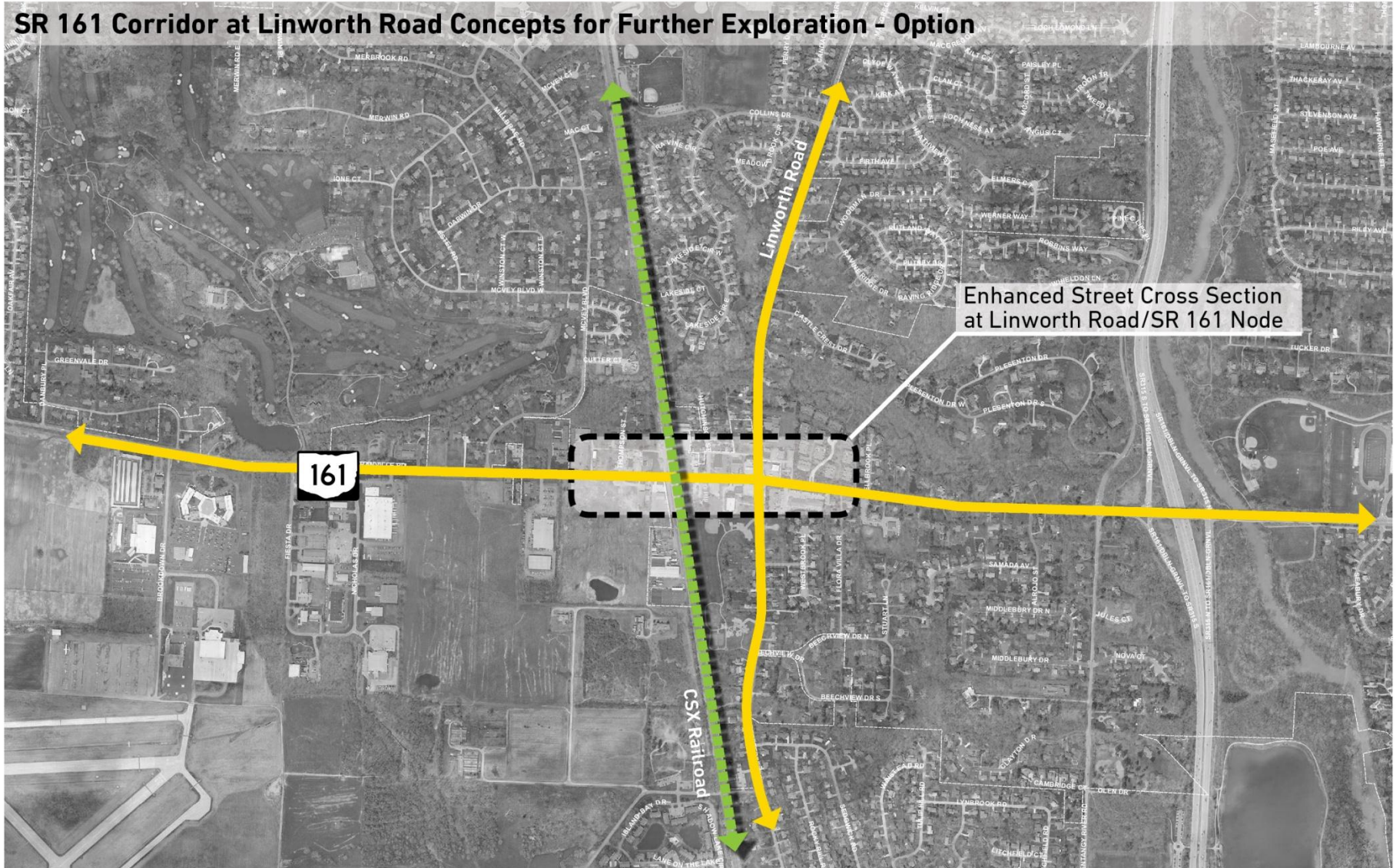
Dublin-Granville Road

SR 161 Corridor at Linworth Road Existing Conditions - Multiple Jurisdiction Coordination



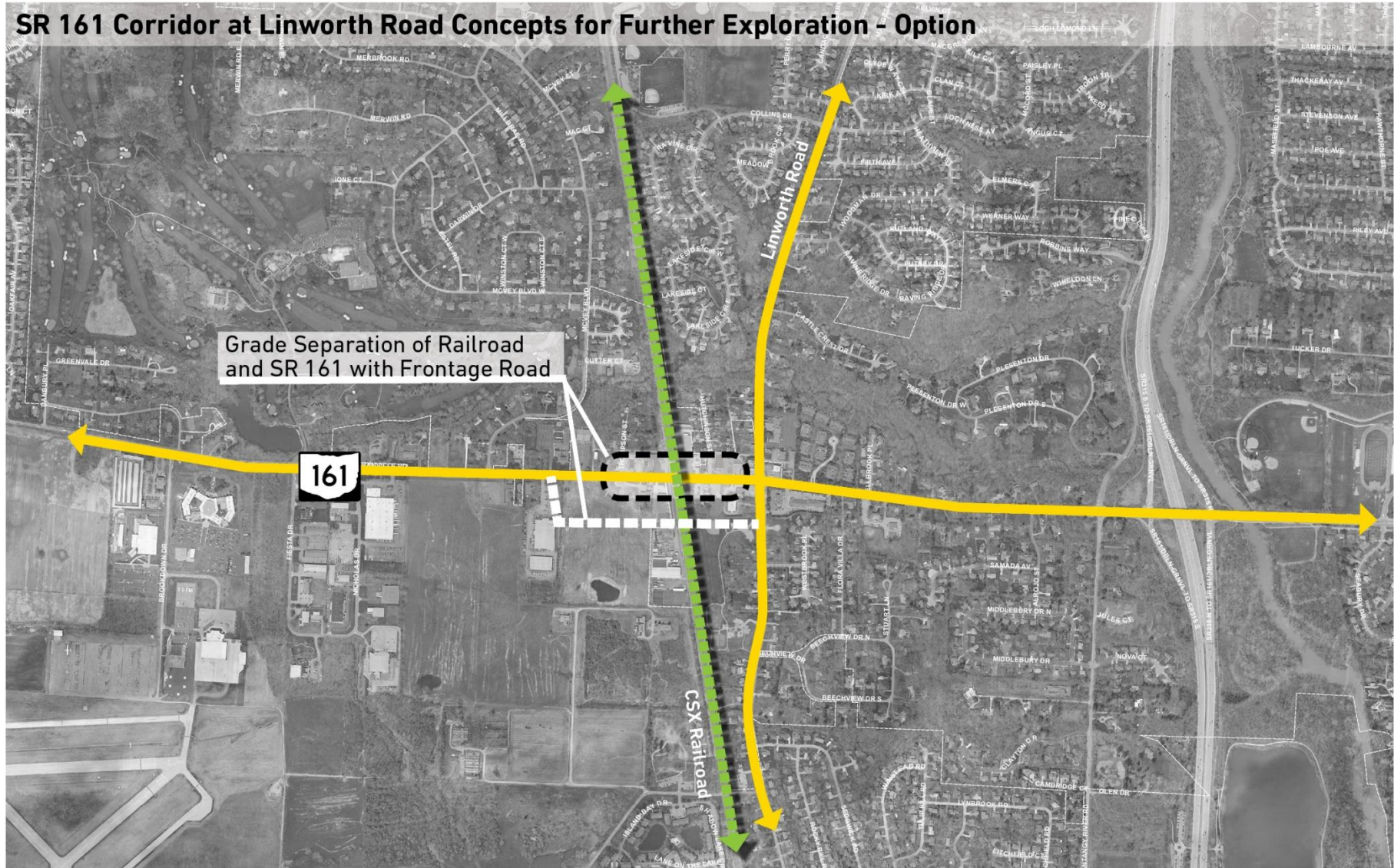
Dublin-Granville Road - Options

SR 161 Corridor at Linworth Road Concepts for Further Exploration - Option



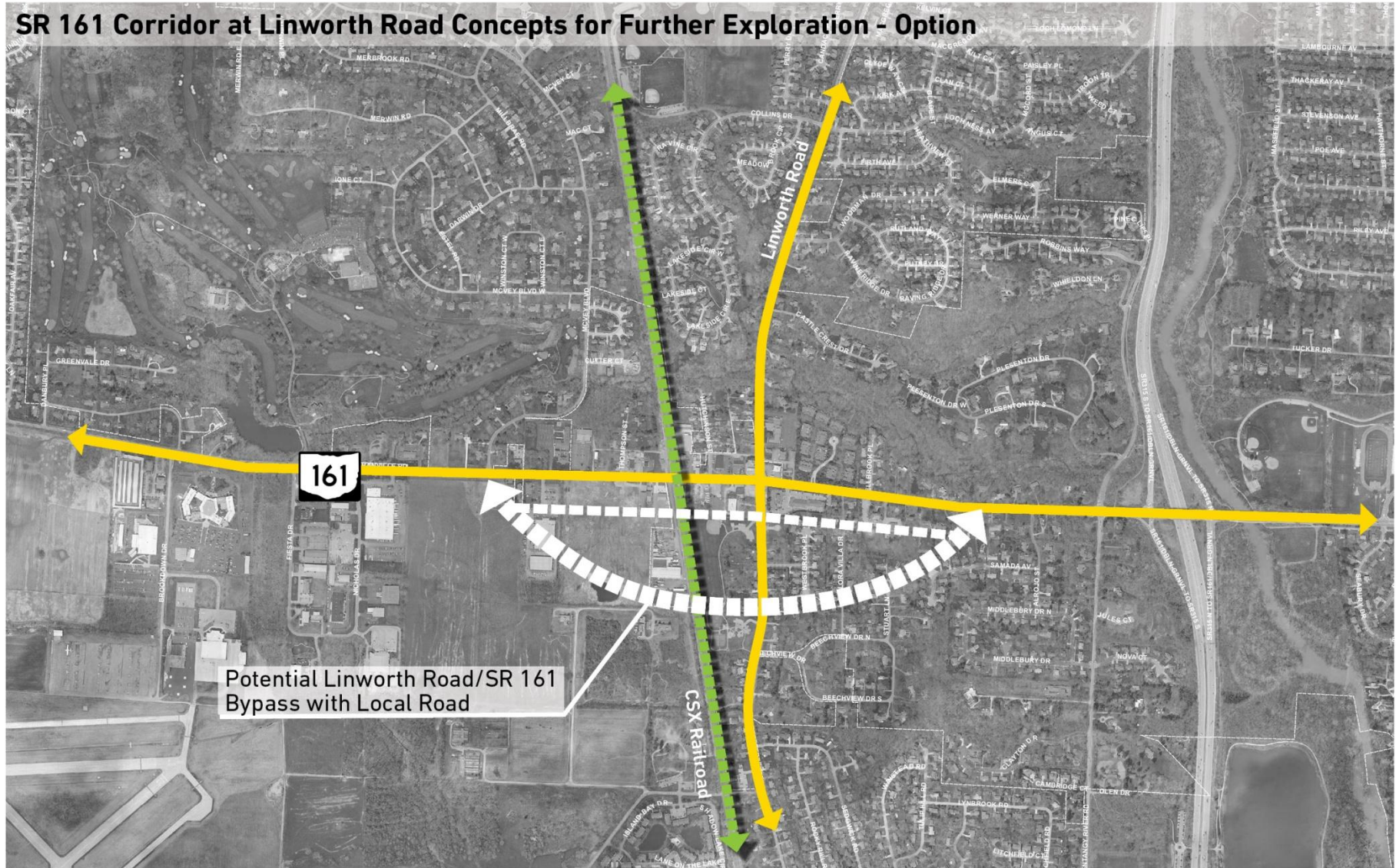
Dublin-Granville Road - Options

SR 161 Corridor at Linworth Road Concepts for Further Exploration - Option



Dublin-Granville Road - Options

SR 161 Corridor at Linworth Road Concepts for Further Exploration - Option

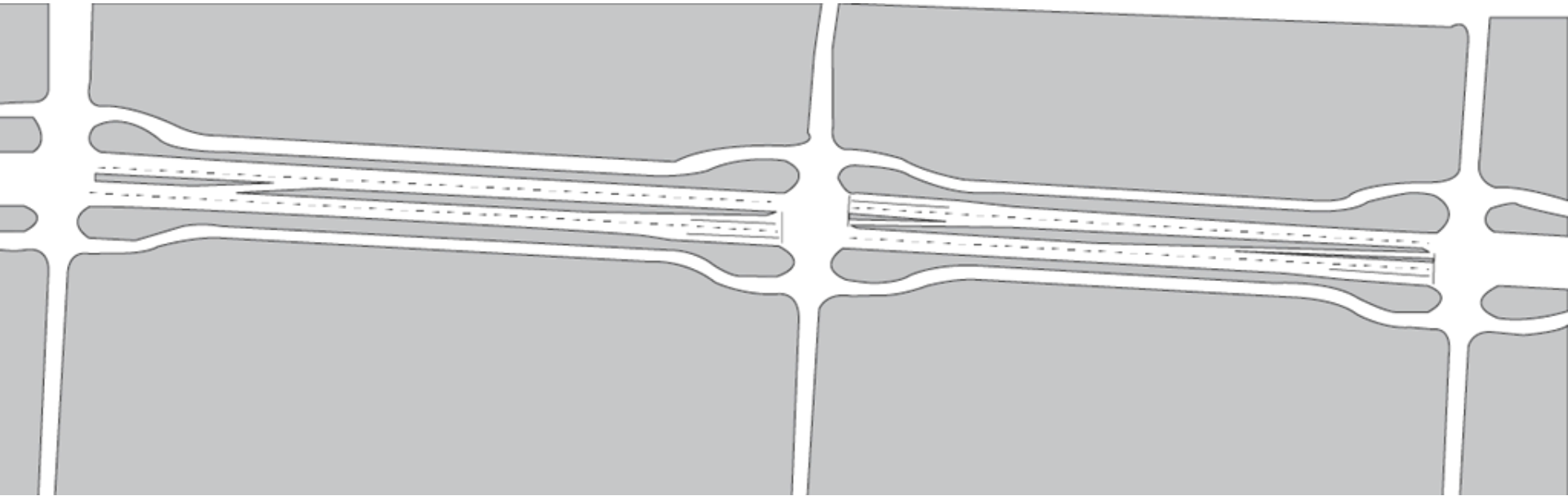


Dublin-Granville Road - Options

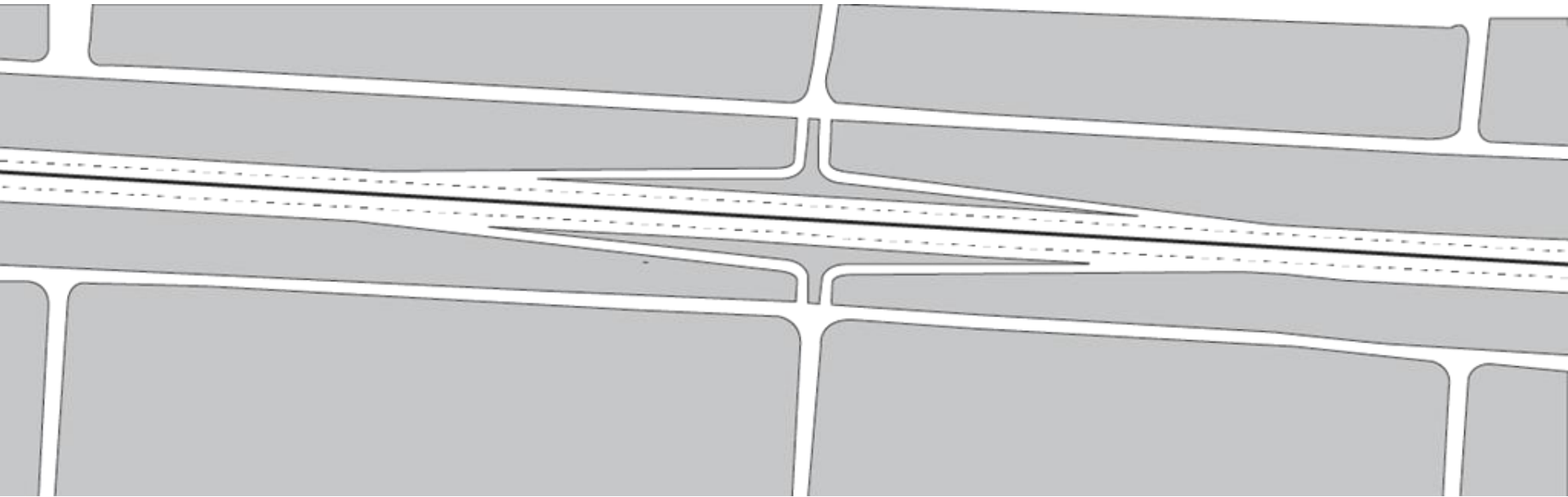
SR 161 Corridor at Linworth Road Concepts for Further Exploration - Option



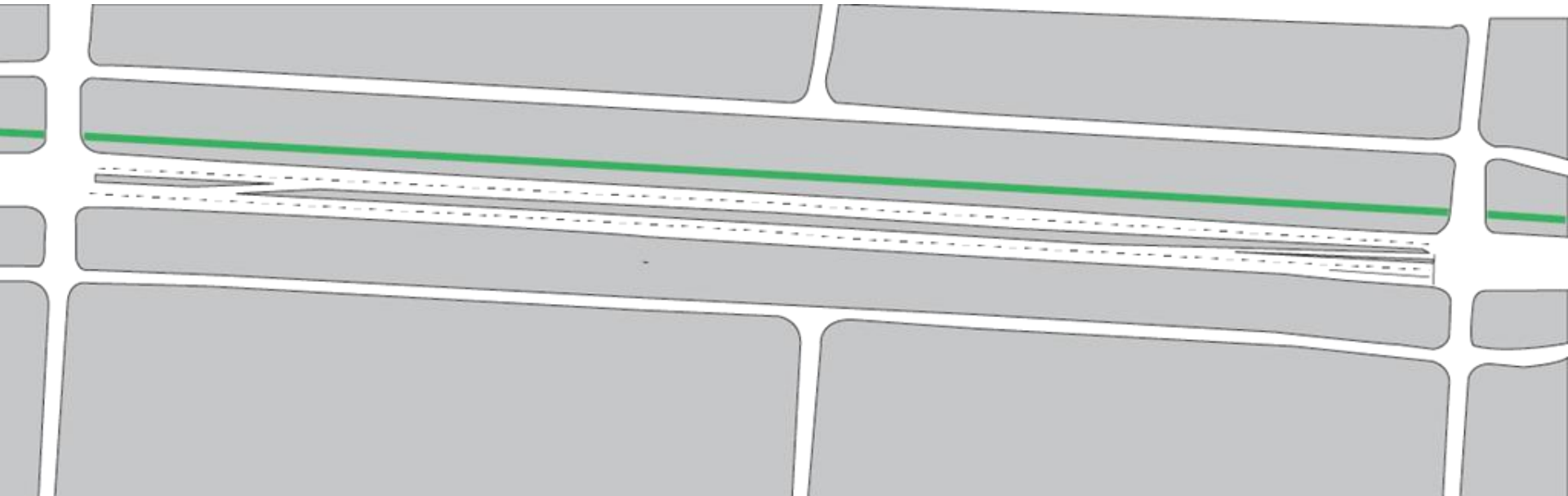
DUBLIN-GRANVILLE - CONFLICTED CORRIDOR (East of Karl)



DUBLIN-GRANVILLE OPTION - LIMITED ACCESS



DUBLIN-GRANVILLE OPTION - COMPLETE STREET



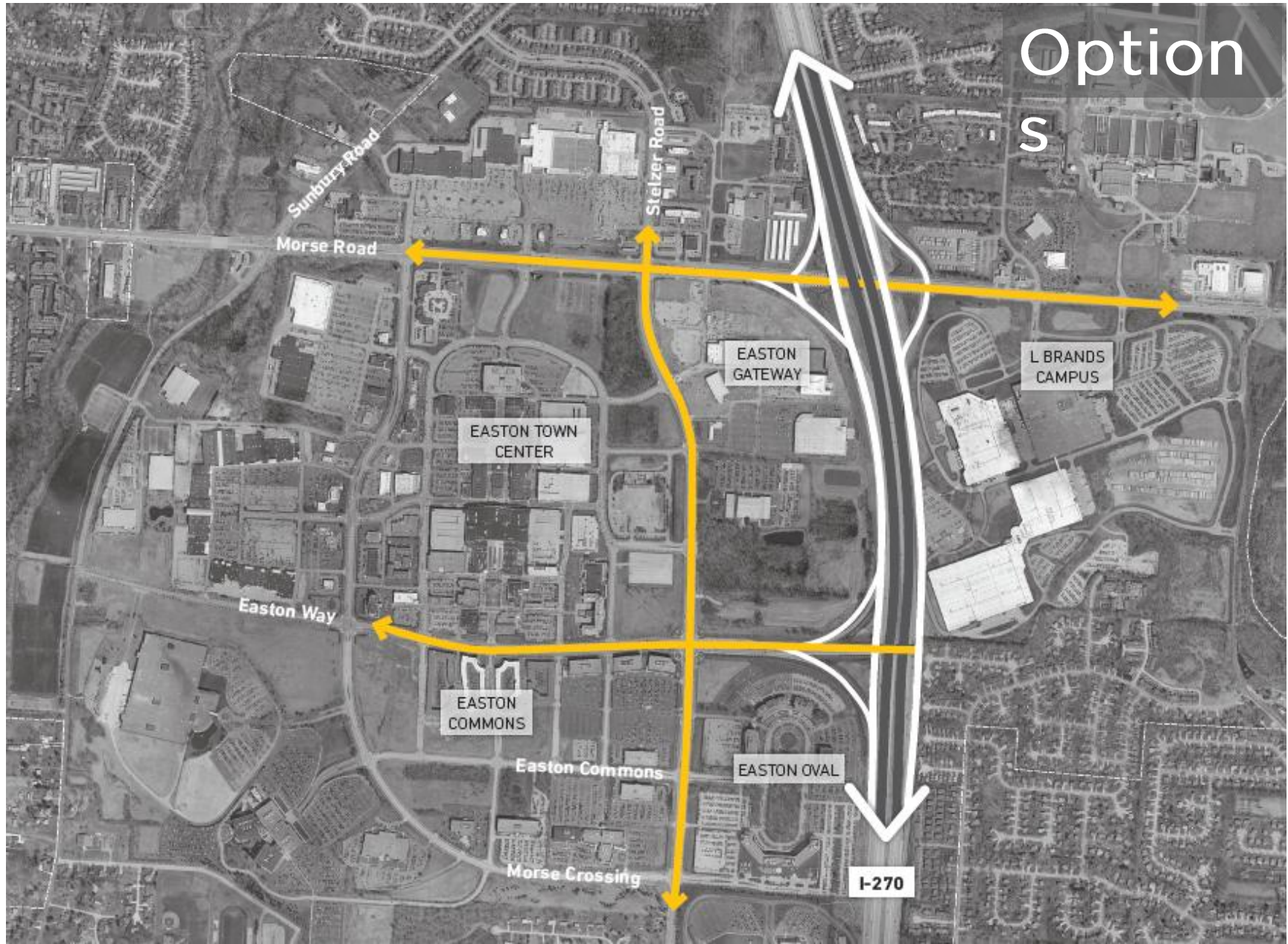


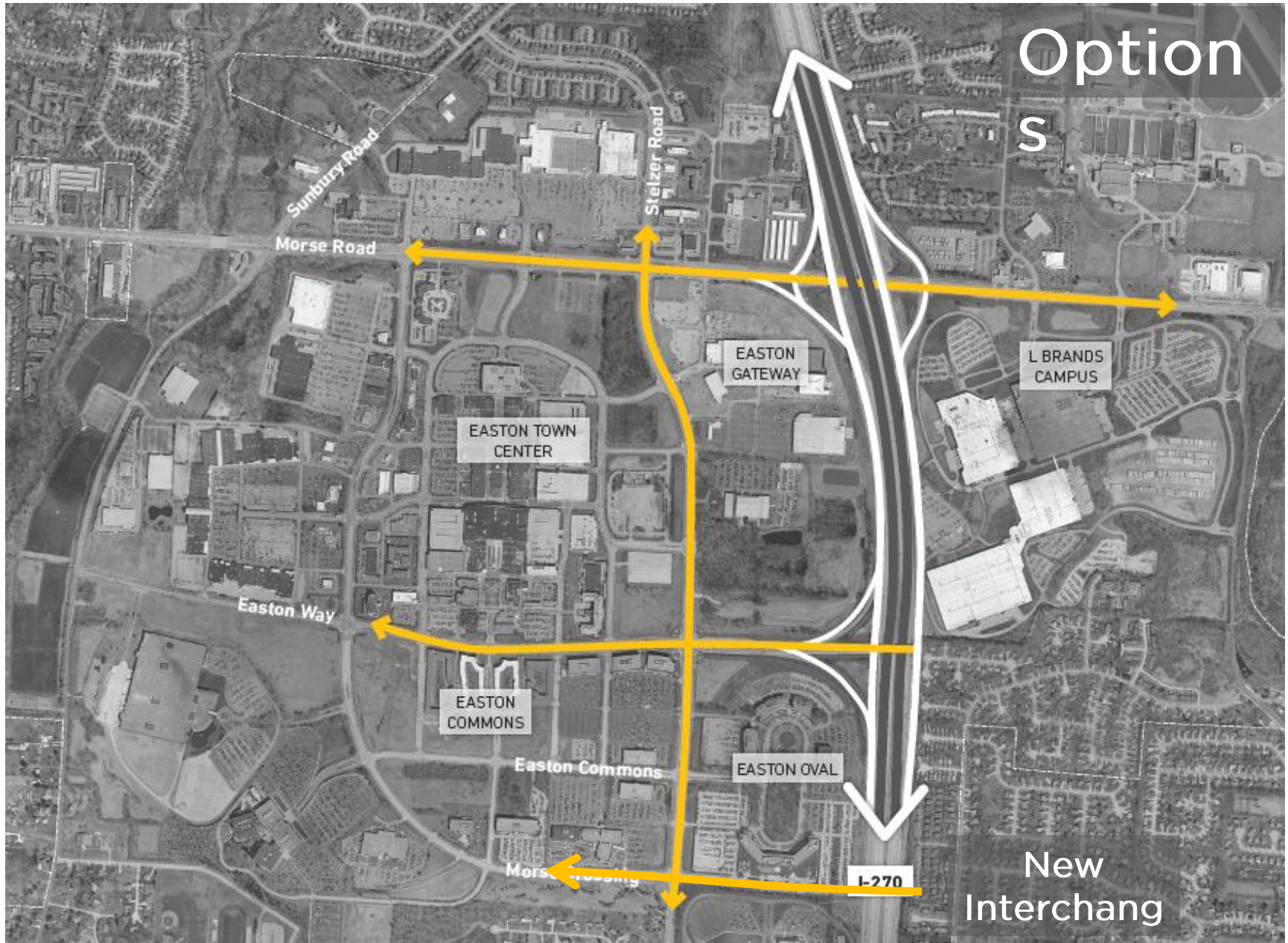
I-270 at Morse Rd 2015-03-07 14:28:07



CONNECT
COLUMBUS

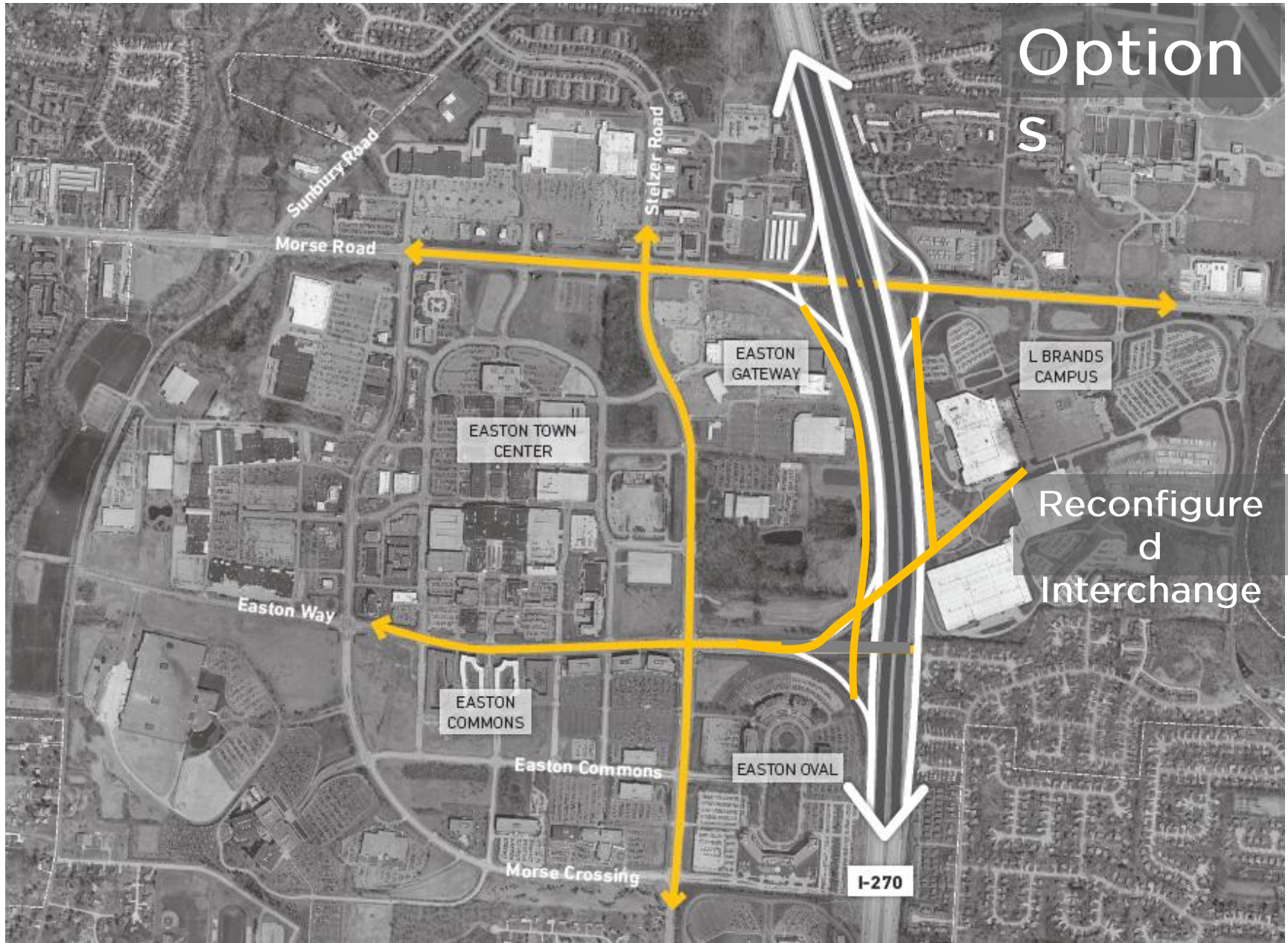
Options





Options

New Interchang



Option
s

Reconfigure
d
Interchange

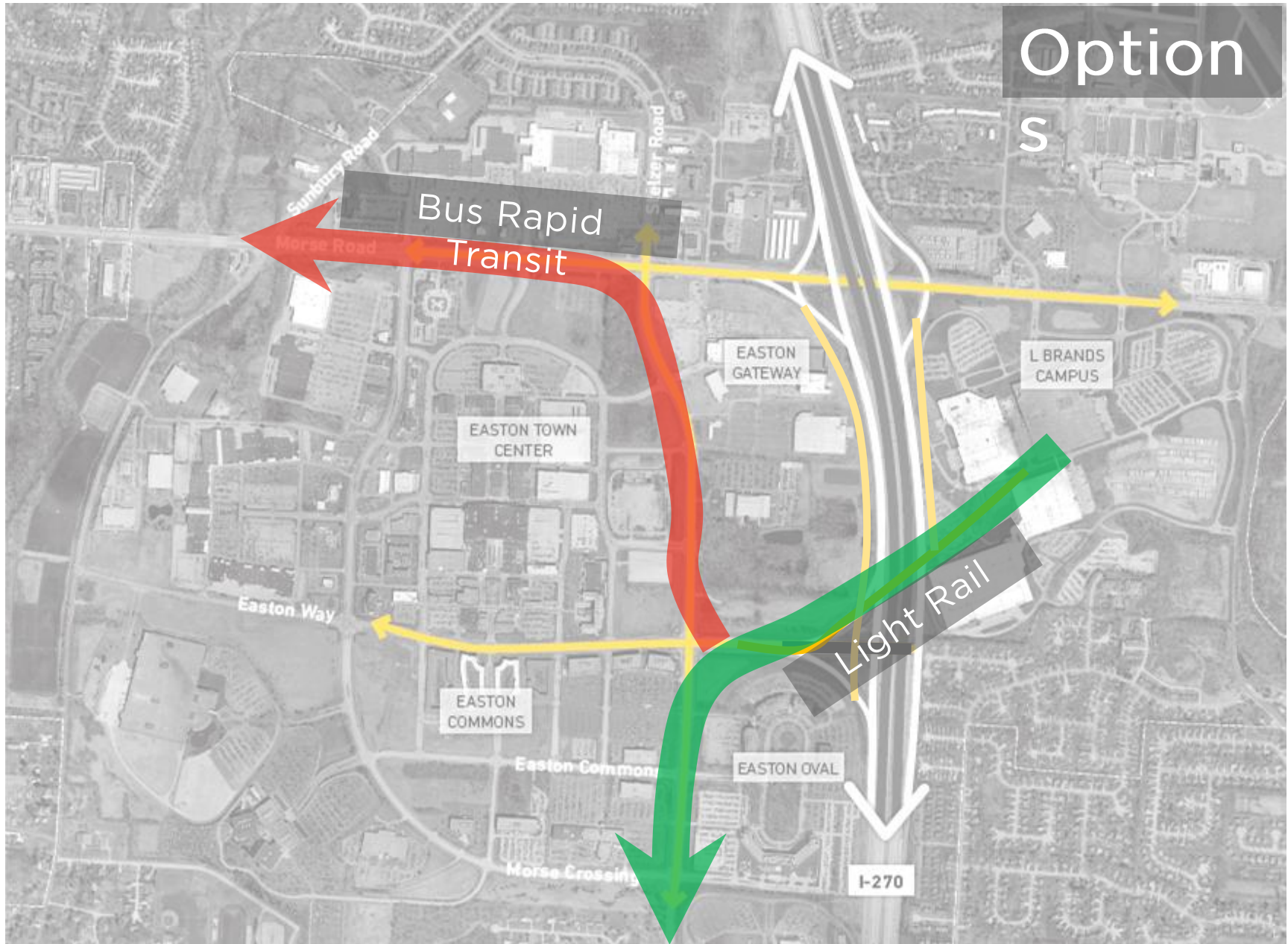
I-270

Transit





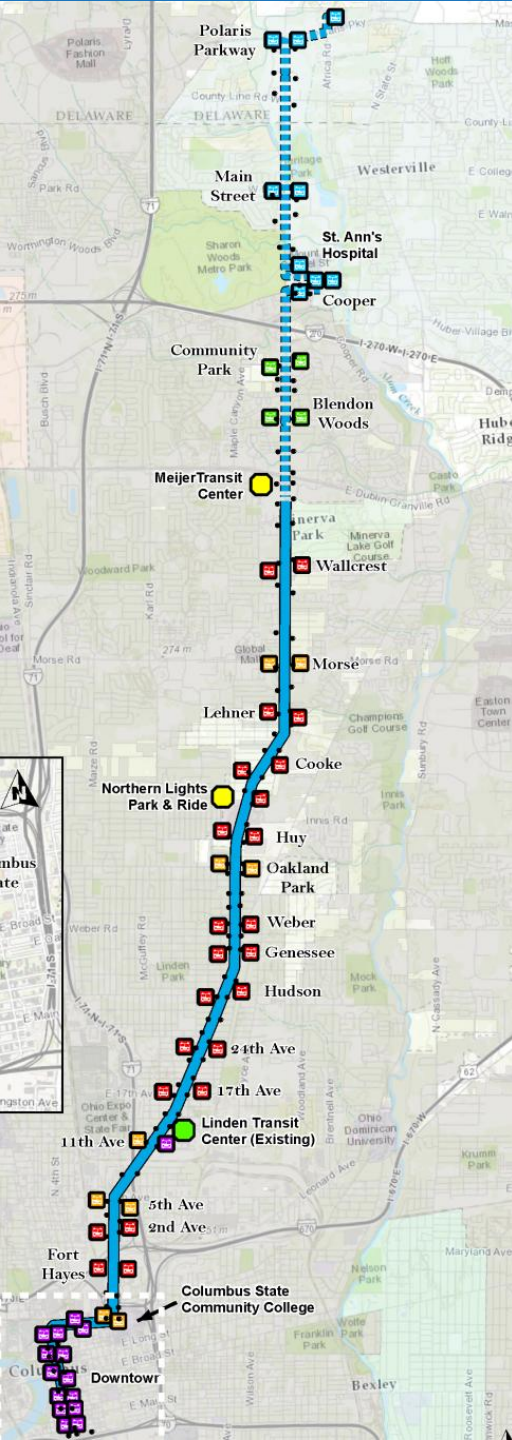
Options

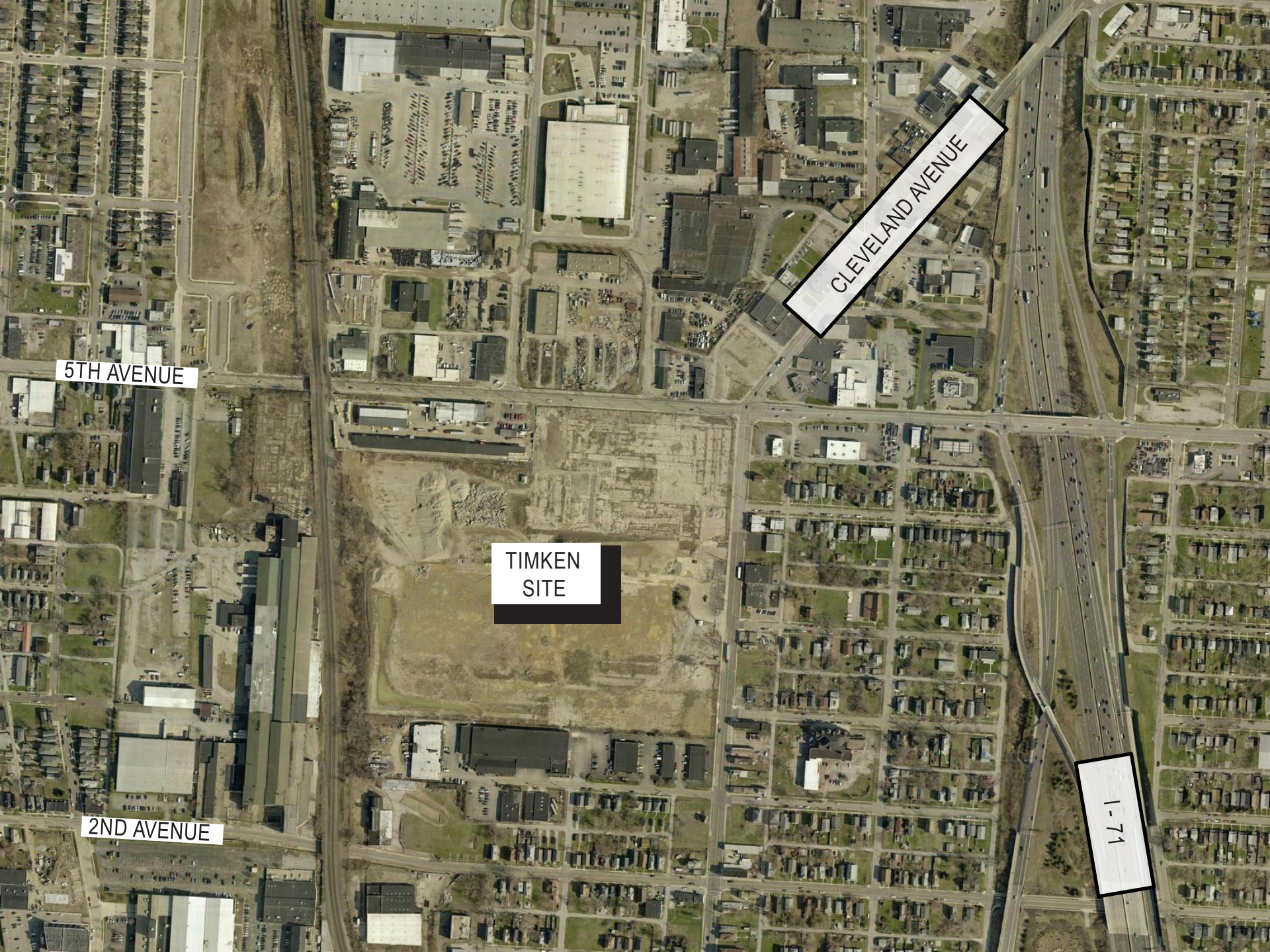




Cleveland Avenue BRT

20% Faster Than Line
1





5TH AVENUE

CLEVELAND AVENUE

TIMKEN
SITE

2ND AVENUE

I-71

FUTURE TRANSIT
ENHANCEMENTS

5TH AVENUE

FUTURE CMAX BRT

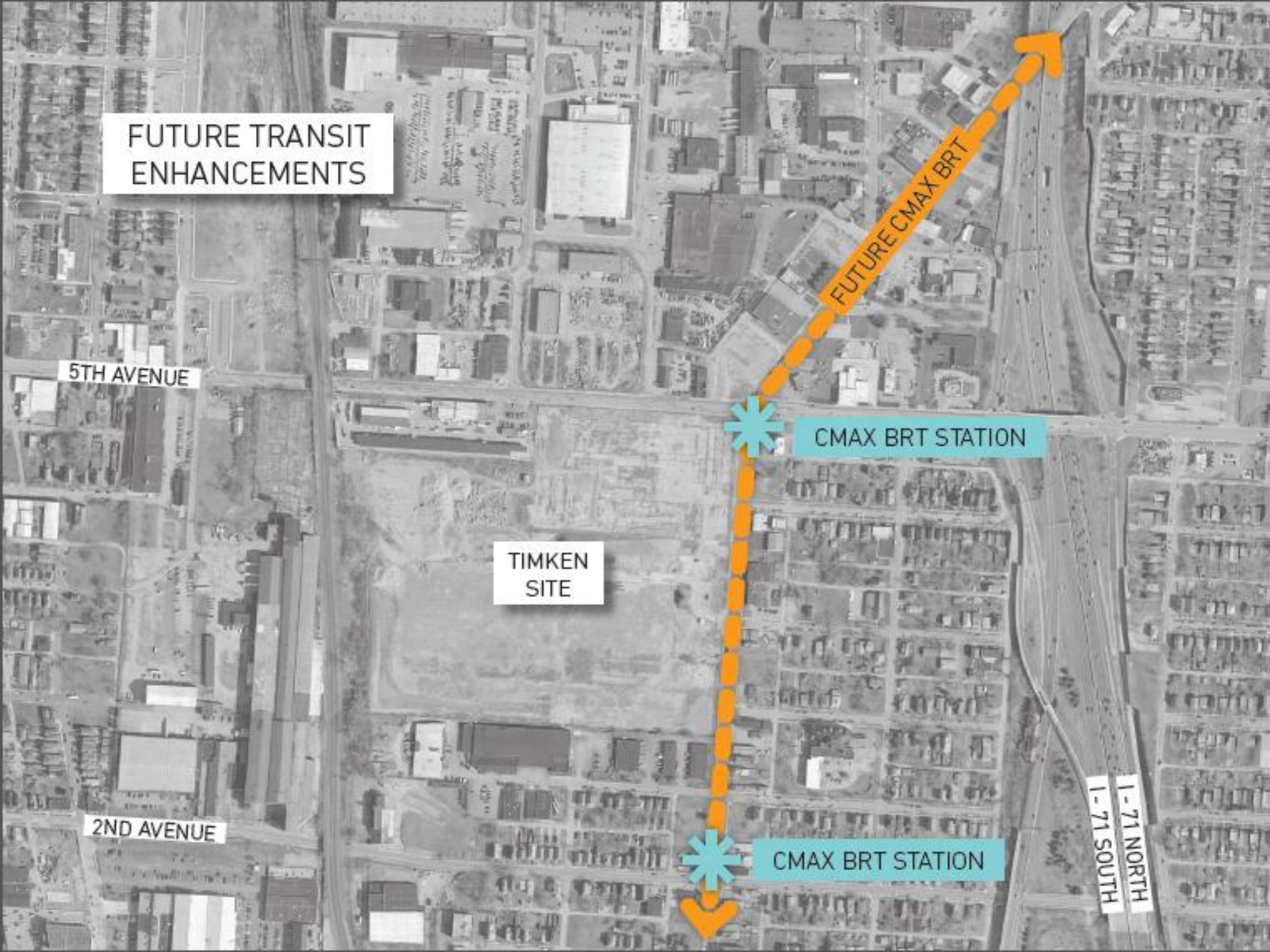
CMAX BRT STATION

TIMKEN
SITE

2ND AVENUE

CMAX BRT STATION

I-71 NORTH
I-71 SOUTH



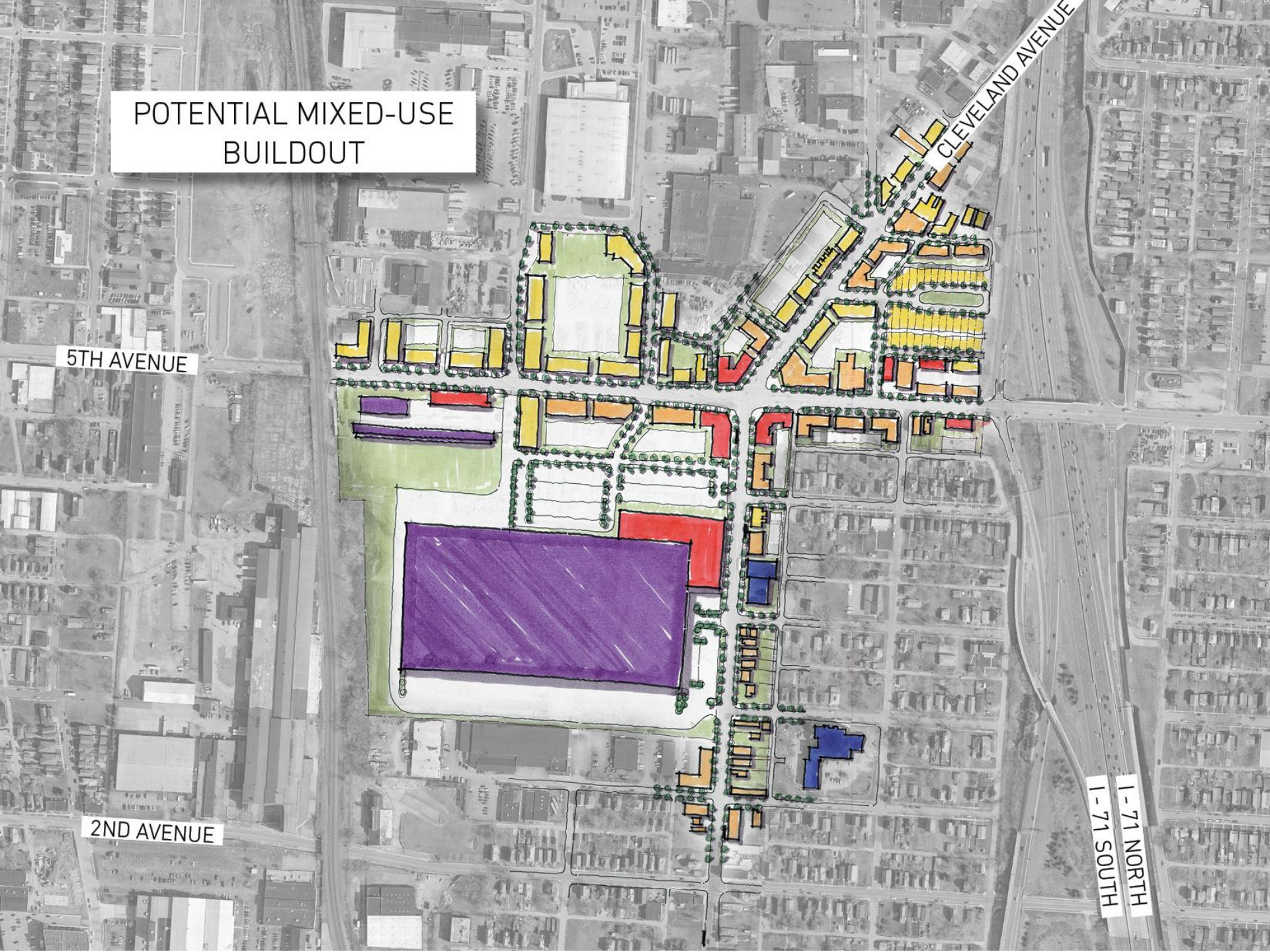
POTENTIAL MIXED-USE
BUILDOUT

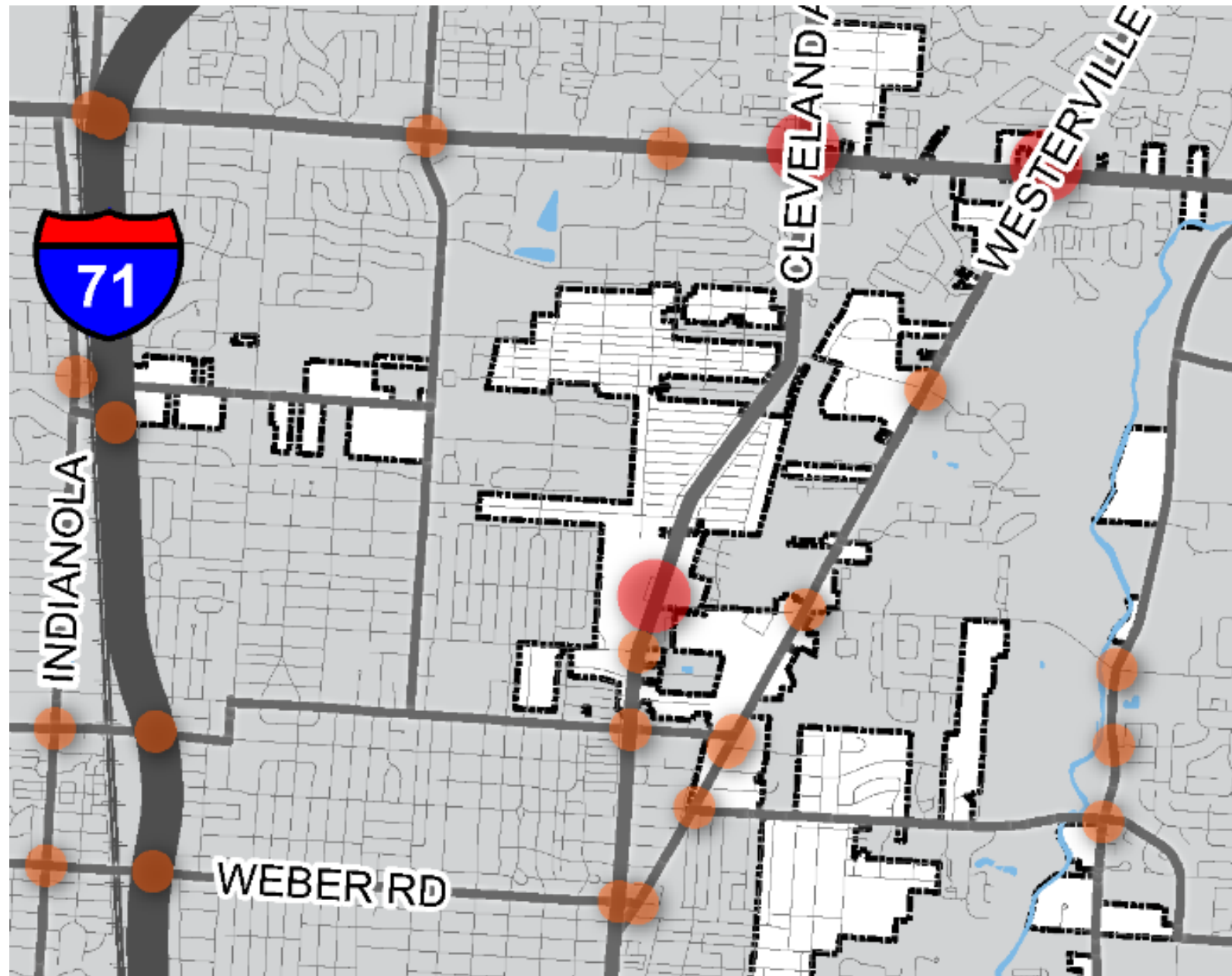
5TH AVENUE

2ND AVENUE

CLEVELAND AVENUE

1-71 NORTH
1-71 SOUTH





NORTHERN LIGHTS
SHOPPING CENTER

CLEVELAND
AVENUE

WESTERVILLE
ROAD

INNIS ROAD

OAKLAND PARK AVE

NORTH BROADWAY

AGLER ROAD

NORTHERN LIGHTS
PARK & RIDE



HUY ROAD CMAX STATION



OAKLAND PARK CMAX STATION



FUTURE CMAX BRT



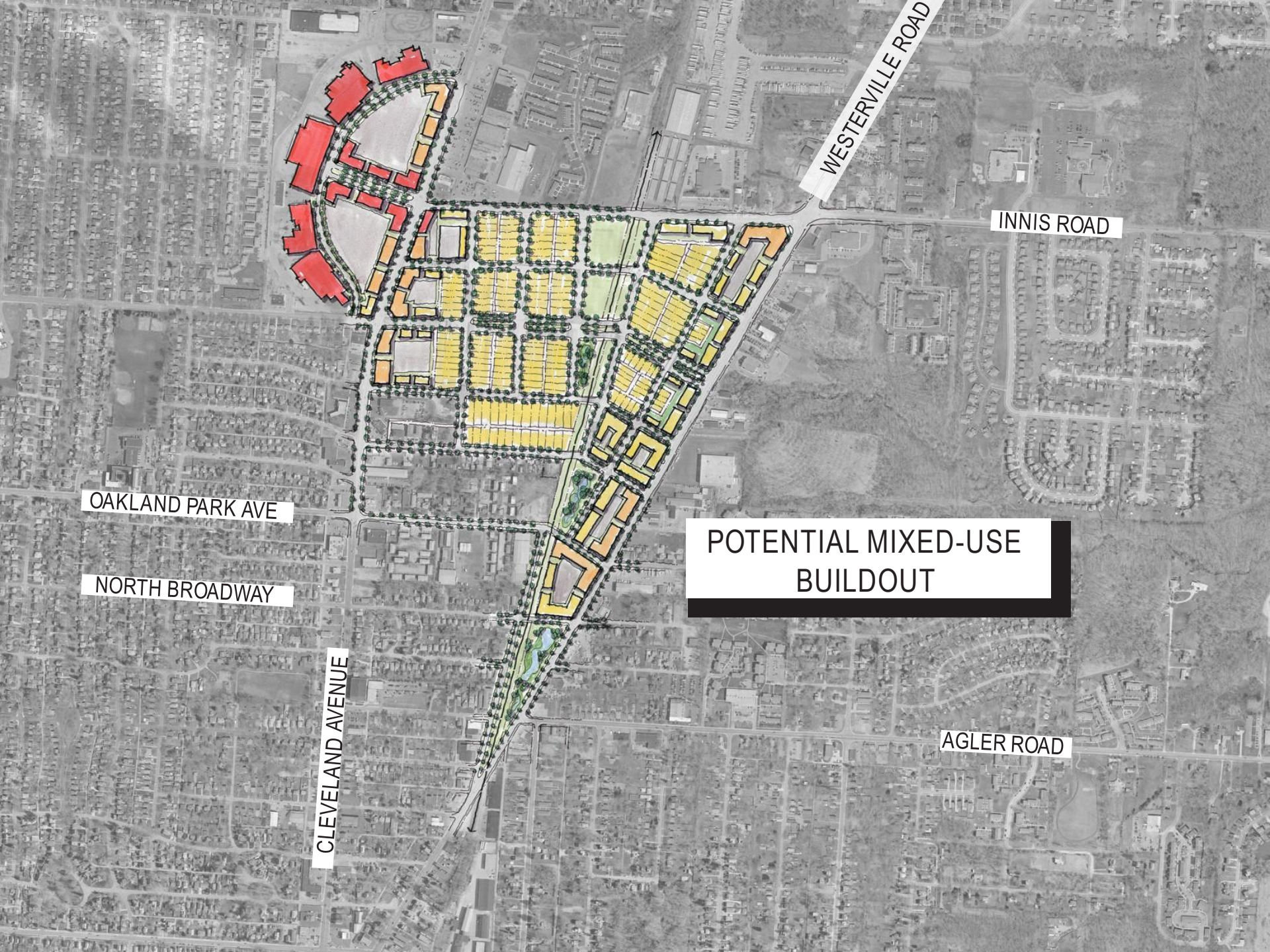
POTENTIAL TRAIL ALONG RAIL ROW



WESTERVILLE ROAD

INNIS ROAD

AGLER ROAD



WESTERVILLE ROAD

INNIS ROAD

POTENTIAL MIXED-USE
BUILDOUT

AGLER ROAD

CLEVELAND AVENUE

OAKLAND PARK AVE

NORTH BROADWAY



TRAIL

WESTERVILLE ROAD

INNIS ROAD

OAKLAND PARK AVE

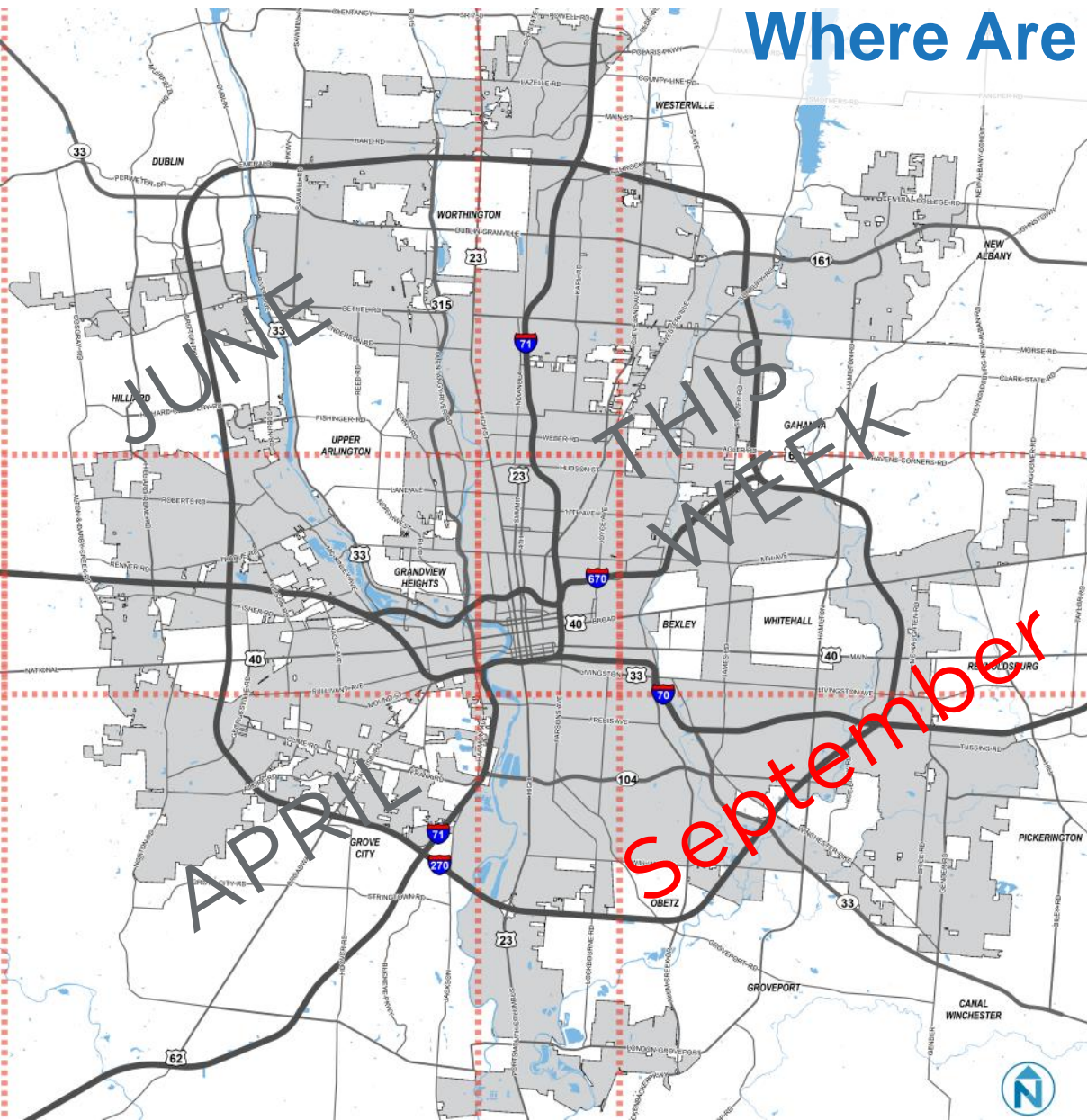
NORTH BROADWAY

CLEVELAND AVENUE

GREEN SPINE ALONG TRAIL CONNECTION

AGLER ROAD

Where Are We Concentrating?



DISCUSSION

THANK YOU