

SCD 1500 NOTES

1A. SEE SCD 1500 NOTE 3. TAPER LENGTHS ARE TO BE CALCULATED USING FORMULAS FROM THE SCD 1500, TABLE 1: TAPER LENGTHS FOR TEMPORARY TRAFFIC CONTROL ZONES.

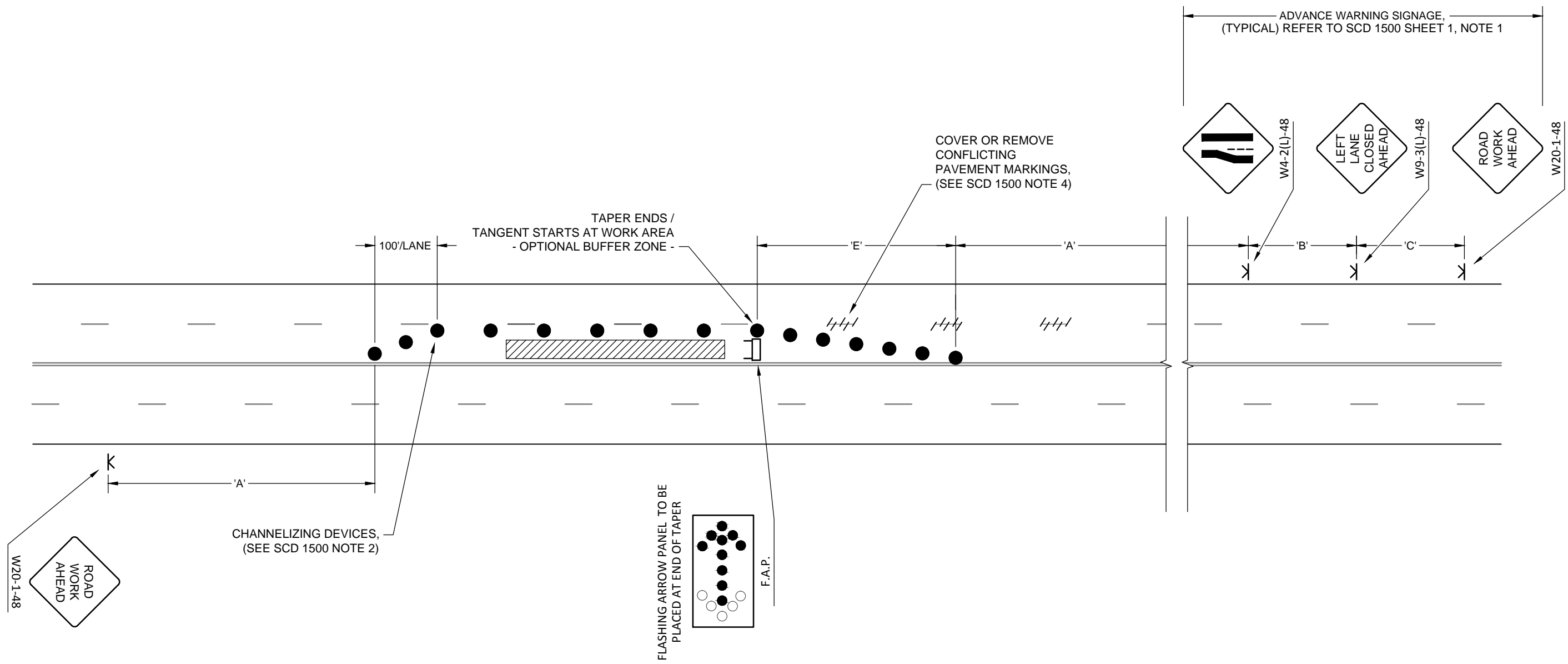
NOTES

1. FOR ADDITIONAL NOTES, TABLES, AND SYMBOL LEGEND SEE CITY OF COLUMBUS STANDARD CONSTRUCTION DRAWING 1500.

RIGHT LANE

LANE CLOSURES

CITY OF COLUMBUS, OHIO DEPARTMENT OF PUBLIC SERVICE DIVISION OF DESIGN AND CONSTRUCTION	STD DWG 1510
<i>Hassan Zahran</i> CITY ENGINEER	9/15/2015
	SHT 1 OF 5



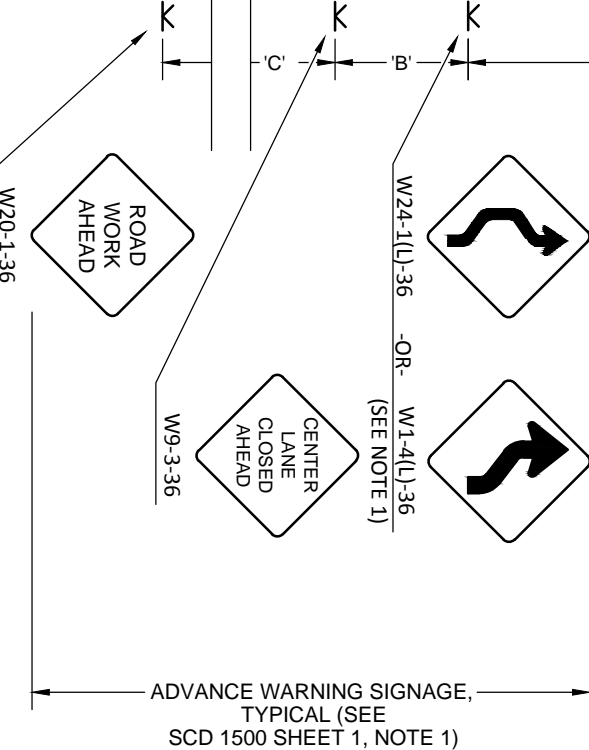
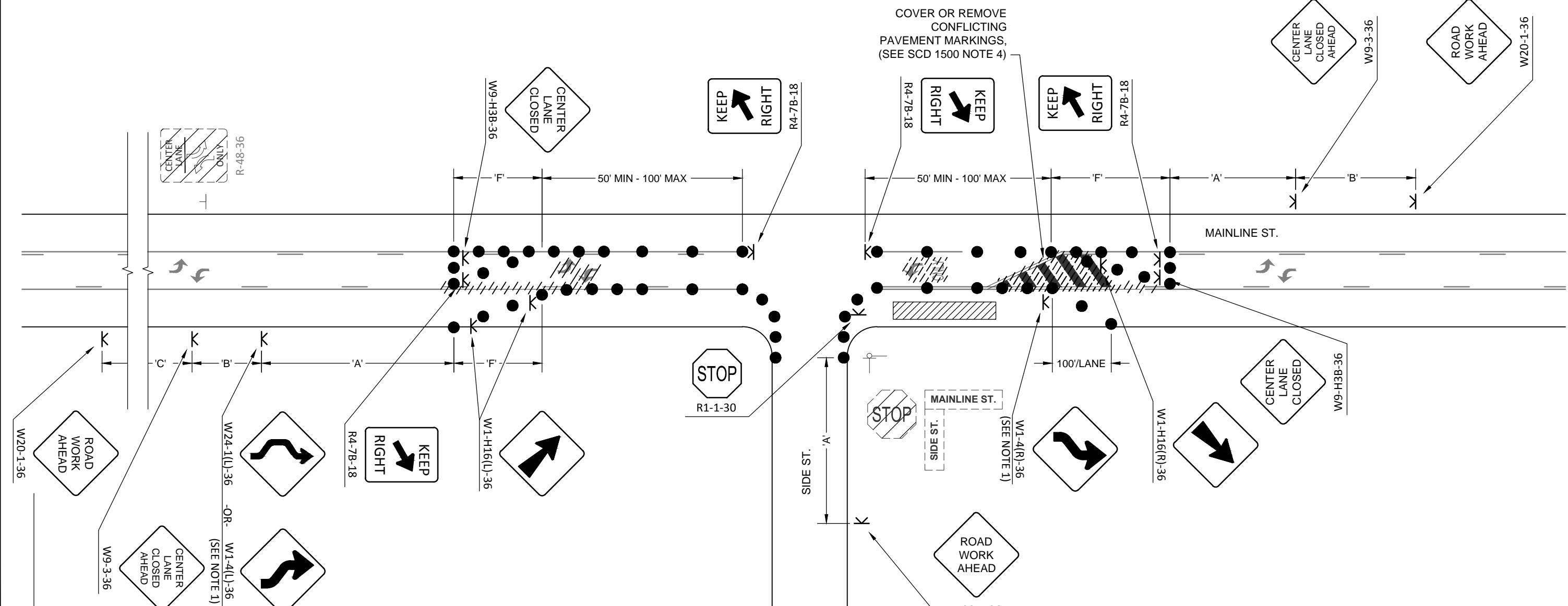
SCD 1500 NOTES

1A. SEE SCD 1500 NOTE 3. TAPER LENGTHS ARE TO BE CALCULATED USING FORMULAS FROM THE SCD 1500, TABLE 1: TAPER LENGTHS FOR TEMPORARY TRAFFIC CONTROL ZONES.

LEFT LANE

LANE CLOSURES

CITY OF COLUMBUS, OHIO DEPARTMENT OF PUBLIC SERVICE DIVISION OF DESIGN AND CONSTRUCTION	STD DWG 1510
<i>Hassan Zahran</i> CITY ENGINEER	9/15/2015
	SHT 2 OF 5



SCD 1500 NOTES

1A. SEE SCD 1500 NOTE 3. TAPER LENGTHS ARE TO BE CALCULATED USING FORMULAS FROM THE SCD 1500, TABLE 1: TAPER LENGTHS FOR TEMPORARY TRAFFIC CONTROL ZONES.

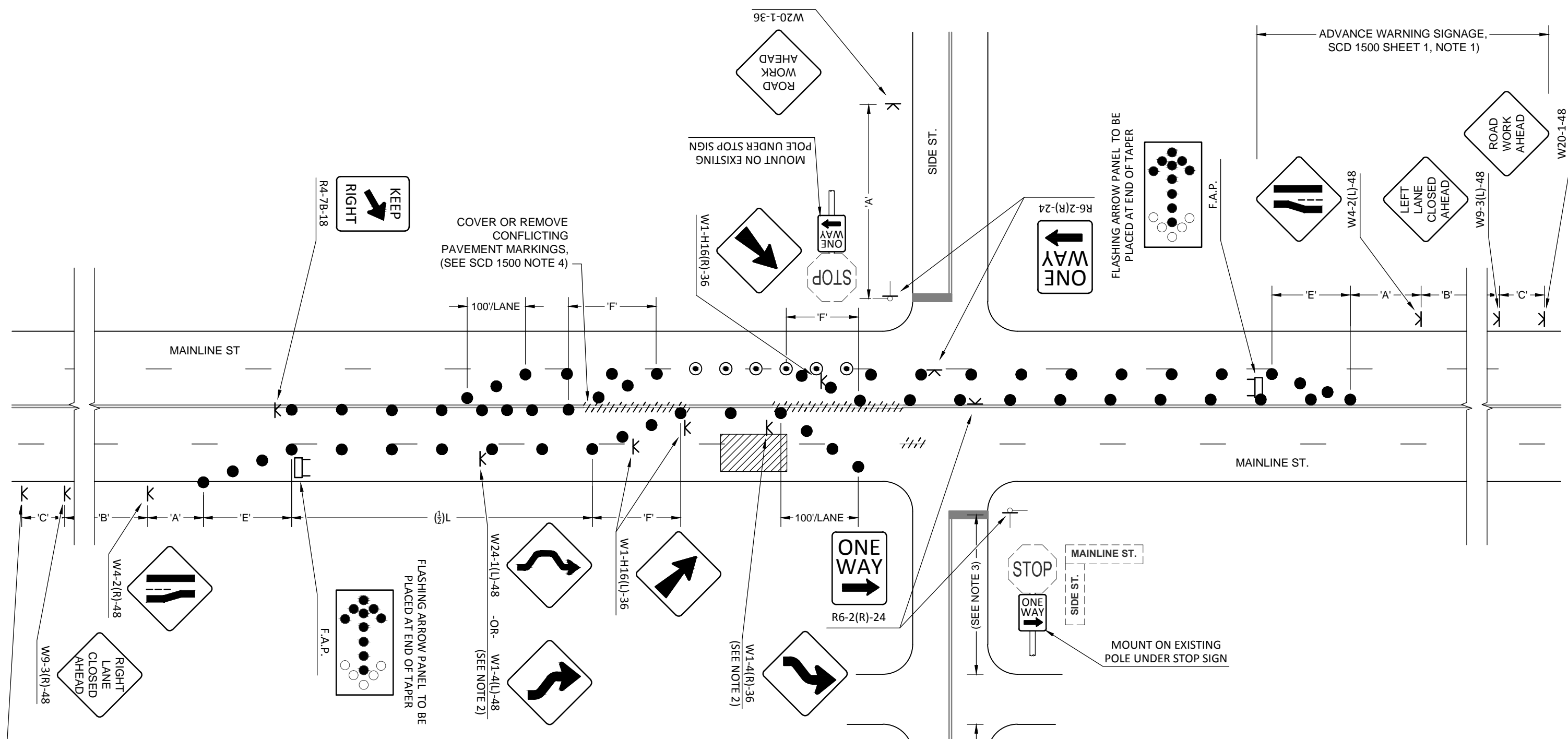
NOTES

- IF TANGENT DISTANCE ALONG THE TEMPORARY DIVERSION IS LESS THAN 540', A DOUBLE REVERSE CURVE SIGN (W24-1) SHOULD BE USED IN PLACE OF INITIAL REVERSE CURVE SIGN AND THE SECOND REVERSE CURVE SIGN SHALL BE OMITTED.
- FOR ADVANCE WARNING SIGN ON SIDE STREET APPLICATION PLACE SIGN A MAXIMUM OF 200' FROM STOP LINE OR TRAFFIC CONTROL.

3-LANE SECTION WITH SHIFT

LANE CLOSURES

CITY OF COLUMBUS, OHIO DEPARTMENT OF PUBLIC SERVICE DIVISION OF DESIGN AND CONSTRUCTION	STD DWG 1510
<i>Hassan Zahran</i> CITY ENGINEER	9/15/2015
	SHT 3 OF 5



SCD 1500 NOTES

1A. SEE SCD 1500 NOTE 3. TAPER LENGTHS ARE TO BE CALCULATED USING FORMULAS FROM THE SCD 1500, TABLE 1: TAPER LENGTHS FOR TEMPORARY TRAFFIC CONTROL ZONES.

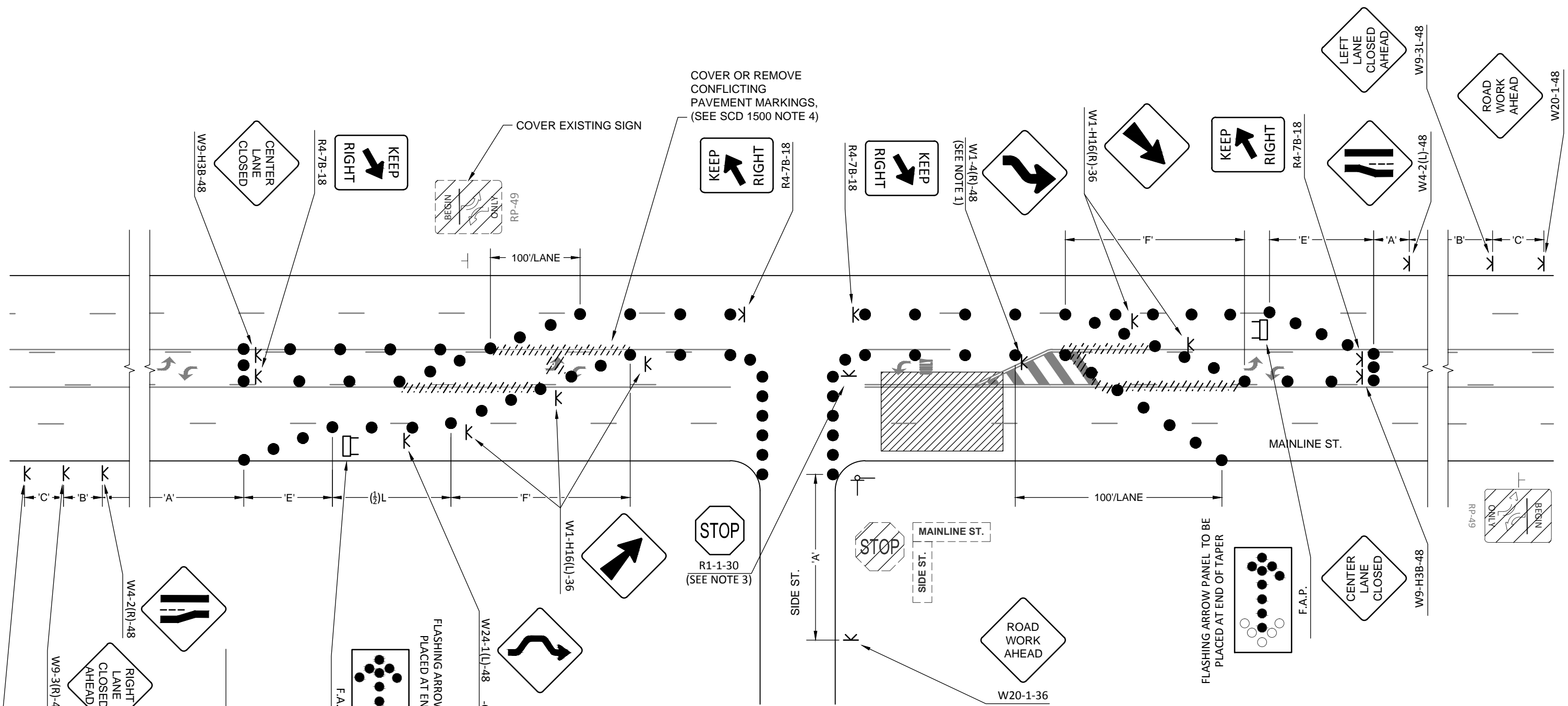
NOTES

1. FOR CLARITY SOME EXISTING TRAFFIC CONTROL AND LANE USAGE SIGNS ARE INTENTIONALLY NOT SHOWN.
2. IF TANGENT DISTANCE ALONG THE TEMPORARY DIVERSION IS LESS THAN 540', A DOUBLE REVERSE CURVE SIGN (W24-1) SHOULD BE USED IN PLACE OF INITIAL REVERSE CURVE SIGN AND THE SECOND REVERSE CURVE SIGN SHALL BE OMITTED.
3. PLACE ADVANCE WARNING SIGN A MAXIMUM OF 200' FROM POSTED STOP OR ADJUST TO NEXT STREET IF LESS THAN 100'.

4-LANE SECTION WITH SHIFT

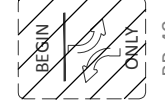
LANE CLOSURES

CITY OF COLUMBUS, OHIO DEPARTMENT OF PUBLIC SERVICE DIVISION OF DESIGN AND CONSTRUCTION	STD DWG 1510
<i>Hassan Zahran</i> CITY ENGINEER	9/15/2015
	SHT 4 OF 5



COVER OR REMOVE
CONFLICTING
PAVEMENT MARKINGS,
(SEE SCD 1500 NOTE 4)

COVER EXISTING SIGN



100'/LANE



R1-1-30
(SEE NOTE 3)

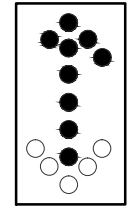


STOP
MAINLINE ST.



W20-1-36

FLASHING ARROW PANEL TO BE
PLACED AT END OF TAPER



F.A.P.



W9-H3B-48

5-LANE SECTION WITH SHIFT

LANE CLOSURES

CITY OF COLUMBUS, OHIO
DEPARTMENT OF PUBLIC SERVICE
DIVISION OF DESIGN AND CONSTRUCTION

STD DWG

1510

Hassan Zahran
CITY ENGINEER

9/15/2015

SHT 5 OF 5

SCD 1500 NOTES

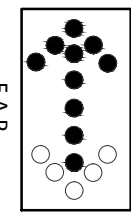
1A. SEE SCD 1500 NOTE 3. TAPER LENGTHS ARE TO BE CALCULATED USING FORMULAS FROM THE SCD 1500, TABLE 1: TAPER LENGTHS FOR TEMPORARY TRAFFIC CONTROL ZONES.

NOTES

- IF TANGENT DISTANCE ALONG THE TEMPORARY DIVERSION IS LESS THAN 540', A DOUBLE REVERSE CURVE SIGN (W24-1) SHOULD BE USED IN PLACE OF INITIAL REVERSE CURVE SIGN AND THE SECOND REVERSE CURVE SIGN SHALL BE OMITTED.
- FOR ADVANCE WARNING SIGN ON SIDE STREET APPLICATION PLACE SIGN A MAXIMUM OF 200' FROM STOP LINE OR TRAFFIC CONTROL.
- PLACE TEMPORARY STOP SIGN ON STAND AND MOVE FORWARD.

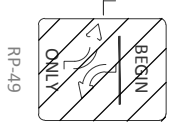
ADVANCE WARNING SIGNAGE,
(TYPICAL) REFER TO
SCD 1500 SHEET 1, NOTE 1

FLASHING ARROW PANEL TO BE
PLACED AT END OF TAPER

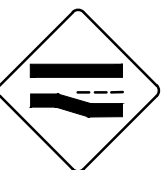


F.A.P.

W24-1(L)-48 -OR- W1-4(L)-48
(SEE NOTE 1)



RP-49



W4-2(L)-48



W20-1-48



W9-3(L)-48



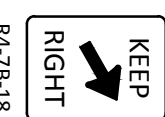
W9-H3B-48



R4-7B-18



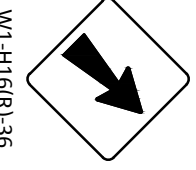
R4-7B-18



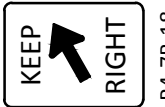
R4-7B-18



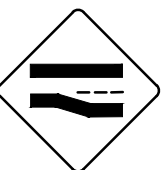
W1-4(R)-48
(SEE NOTE 1)



W1-H16(R)-36



R4-7B-18



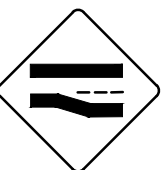
W4-2(L)-48



W9-3(L)-48



W20-1-48



W4-2(L)-48



W9-3(L)-48



W20-1-48