

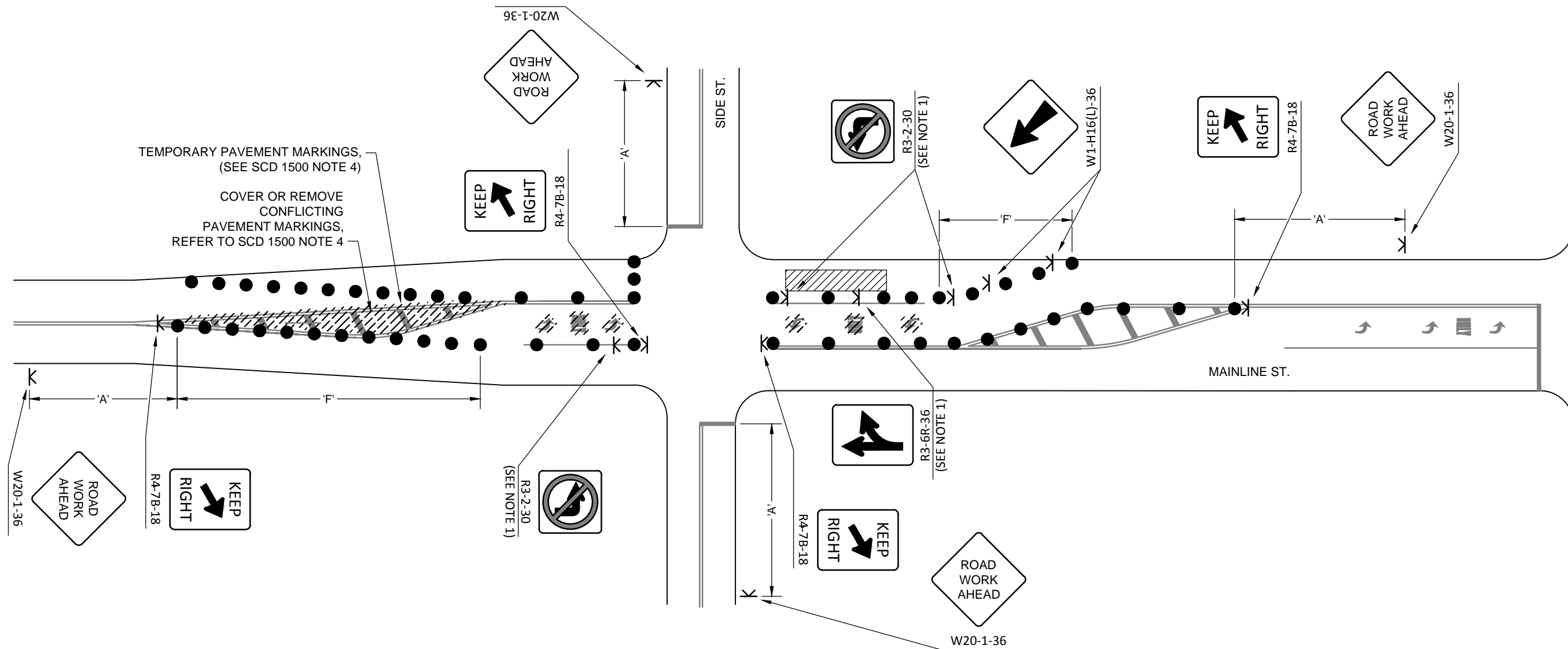
NOTES

1. FOR ADDITIONAL NOTES, TABLES, AND SYMBOL LEGEND SEE CITY OF COLUMBUS STANDARD CONSTRUCTION DRAWING 1500.
2. USE ONLY IN HIGH VOLUME AREA AS DIRECTED BY ENGINEER.
3. FOR CLARITY SOME EXISTING TRAFFIC CONTROL AND LANE USAGE SIGNS ARE INTENTIONALLY NOT SHOWN.
4. FOR ADVANCE WARNING SIGN ON SIDE STREET APPLICATION PLACE SIGN A MAXIMUM OF 200' FROM STOPLINE OR TRAFFIC CONTROL.

LEFT TURN LANE

LANE CLOSURES INTERSECTIONS

CITY OF COLUMBUS, OHIO DEPARTMENT OF PUBLIC SERVICE DIVISION OF DESIGN AND CONSTRUCTION	STD DWG 1520
<i>Hassan Zahran</i> CITY ENGINEER	9/15/2015
	SHT 1 OF 7



SCD 1500 NOTES

1A. SEE SCD 1500 NOTE 3. TAPER LENGTHS ARE TO BE CALCULATED USING FORMULAS FROM THE SCD 1500, TABLE 1.

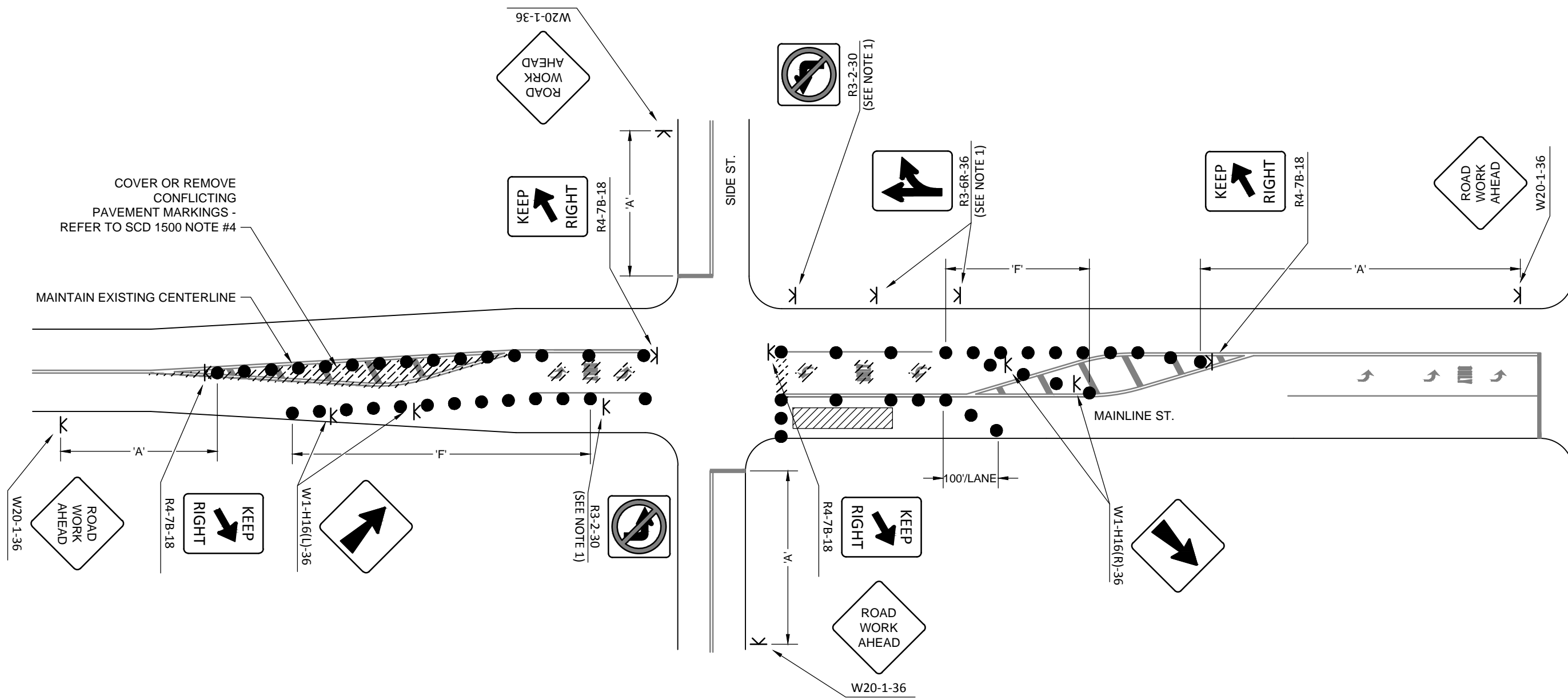
NOTES

1. USE ONLY IN HIGH VOLUME AREA AS DIRECTED BY ENGINEER.
2. FOR ADVANCE WARNING SIGN ON SIDE STREET APPLICATION PLACE SIGN A MAXIMUM OF 200' FROM STOPLINE OR TRAFFIC CONTROL.

3-LANE SECTION, NEAR SIDE

LANE CLOSURES INTERSECTIONS

CITY OF COLUMBUS, OHIO DEPARTMENT OF PUBLIC SERVICE DIVISION OF DESIGN AND CONSTRUCTION	STD DWG 1520
<i>Hassan Zahran</i> CITY ENGINEER	9/15/2015
	SHT 2 OF 7



SCD 1500 NOTES

1A. SEE SCD 1500 NOTE 3. TAPER LENGTHS ARE TO BE CALCULATED USING FORMULAS FROM THE SCD 1500, TABLE 1.

NOTES

1. USE ONLY IN HIGH VOLUME AREA AS DIRECTED BY ENGINEER.
2. FOR CLARITY SOME EXISTING TRAFFIC CONTROL AND LANE USAGE SIGNS ARE INTENTIONALLY NOT SHOWN.
3. FOR ADVANCE WARNING SIGN ON SIDE STREET APPLICATION PLACE SIGN A MAXIMUM OF 200' FROM STOP LINE OR TRAFFIC CONTROL.

3-LANE SECTION, FARSIDE

LANE CLOSURES INTERSECTIONS

CITY OF COLUMBUS, OHIO
DEPARTMENT OF PUBLIC SERVICE
DIVISION OF DESIGN AND CONSTRUCTION

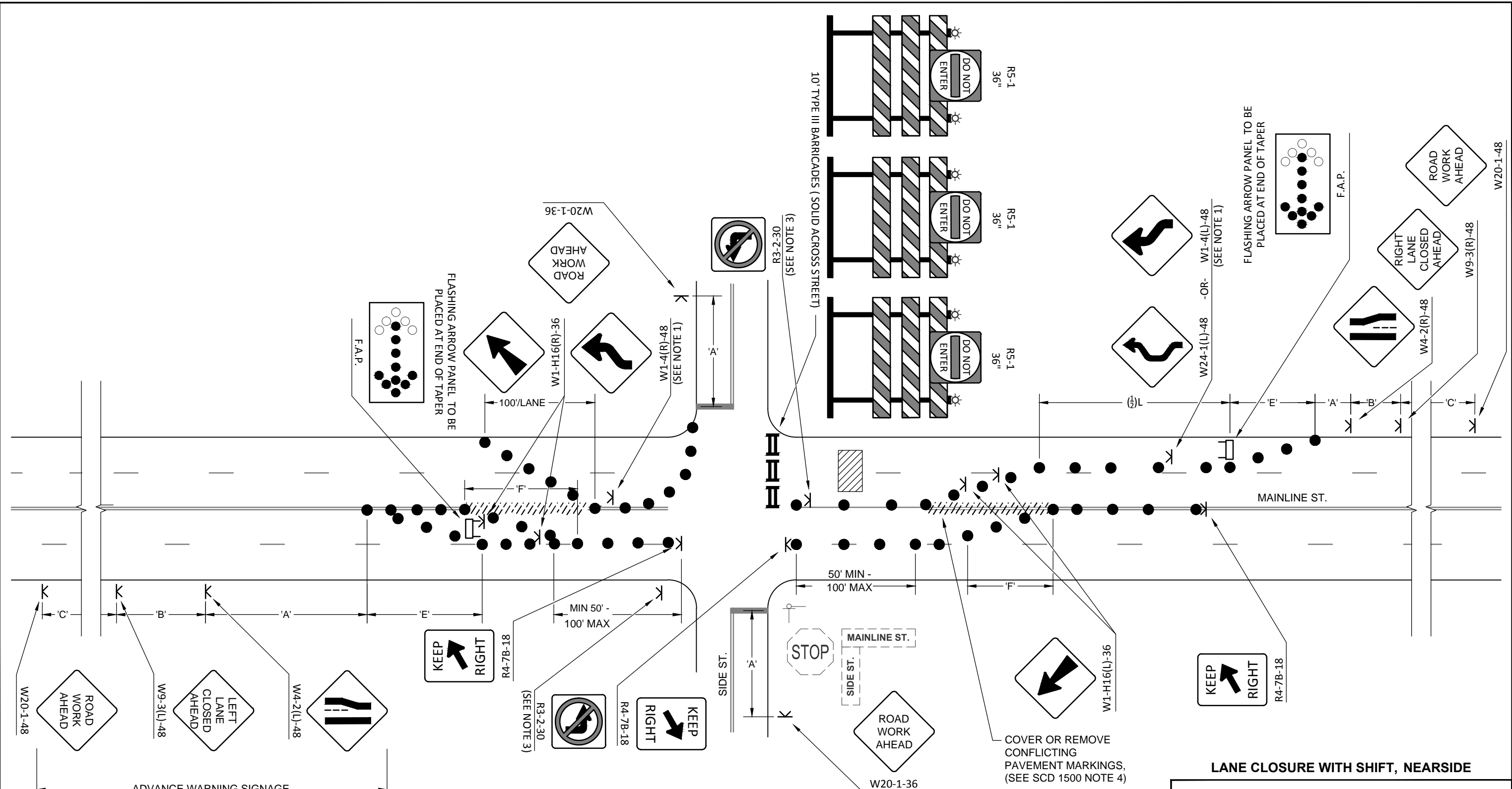
STD DWG

1520

Hassan Zahran
CITY ENGINEER

9/15/2015

SHT 3 OF 7



SCD 1500 NOTES

1A. SEE SCD 1500 NOTE 3. TAPER LENGTHS ARE TO BE CALCULATED USING FORMULAS FROM THE SCD 1500, TABLE 1.

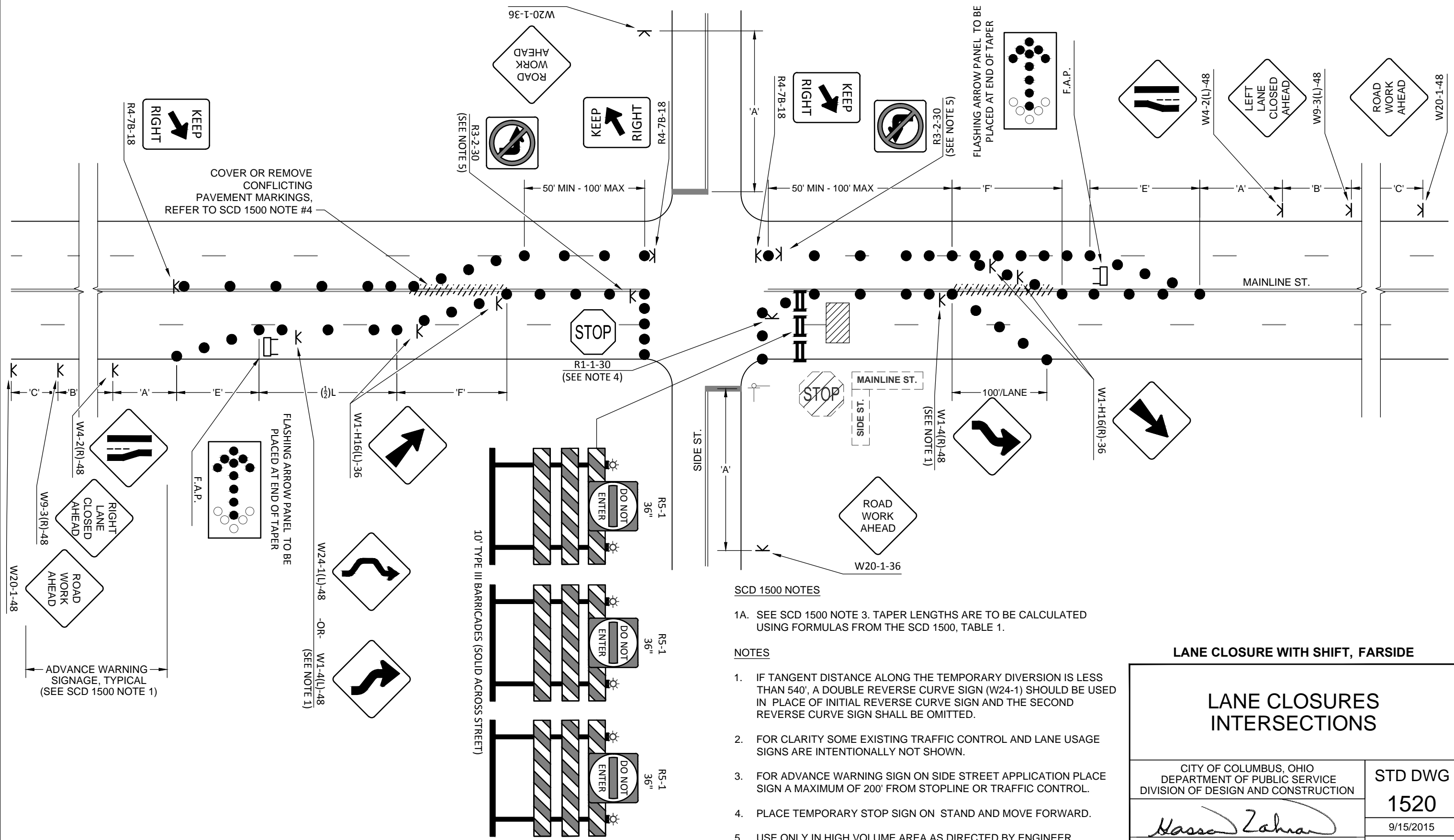
NOTES

- IF TANGENT DISTANCE ALONG THE TEMPORARY DIVERSION IS LESS THAN 540', A DOUBLE REVERSE CURVE SIGN (W24-1) SHOULD BE USED IN PLACE OF INITIAL REVERSE CURVE SIGN AND THE SECOND REVERSE CURVE SIGN SHALL BE OMITTED.
- FOR ADVANCE WARNING SIGN ON SIDE STREET APPLICATION PLACE SIGN A MAXIMUM OF 200' FROM STOP LINE OR TRAFFIC CONTROL.
- USE ONLY IN HIGH VOLUME AREA AS DIRECTED BY ENGINEER.

LANE CLOSURE WITH SHIFT, NEARSIDE

LANE CLOSURES INTERSECTIONS

CITY OF COLUMBUS, OHIO DEPARTMENT OF PUBLIC SERVICE DIVISION OF DESIGN AND CONSTRUCTION	STD DWG 1520
 CITY ENGINEER	9/15/2015 SHT 4 OF 7



SCD 1500 NOTES

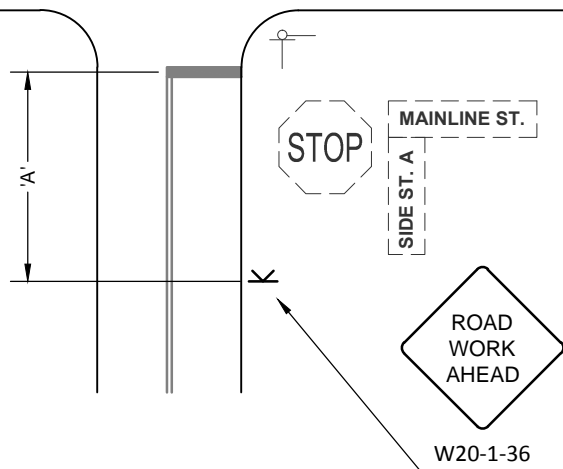
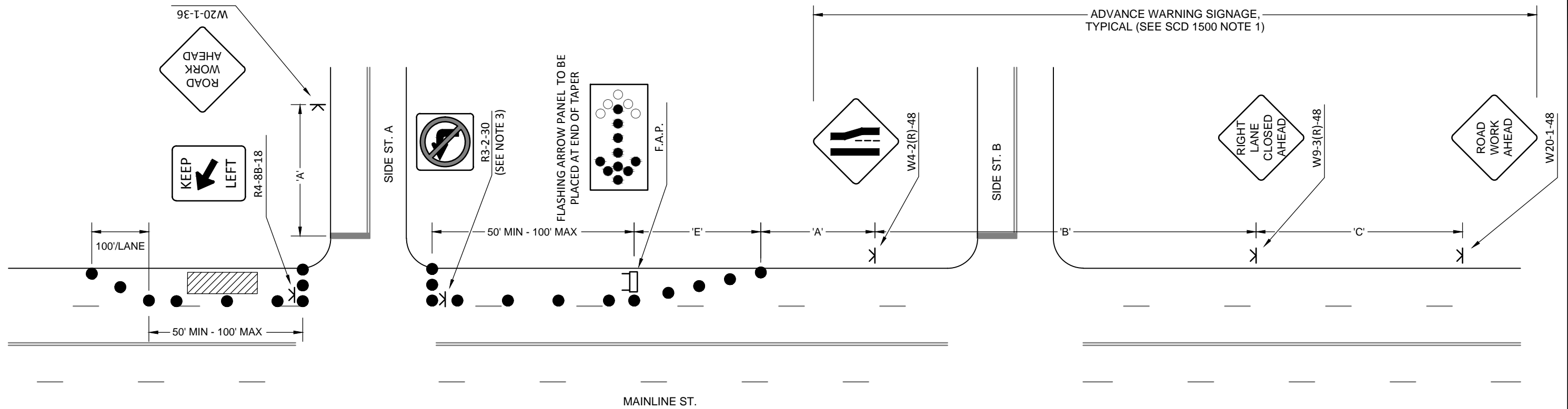
1A. SEE SCD 1500 NOTE 3. TAPER LENGTHS ARE TO BE CALCULATED USING FORMULAS FROM THE SCD 1500, TABLE 1.

NOTES

1. IF TANGENT DISTANCE ALONG THE TEMPORARY DIVERSION IS LESS THAN 540', A DOUBLE REVERSE CURVE SIGN (W24-1) SHOULD BE USED IN PLACE OF INITIAL REVERSE CURVE SIGN AND THE SECOND REVERSE CURVE SIGN SHALL BE OMITTED.
2. FOR CLARITY SOME EXISTING TRAFFIC CONTROL AND LANE USAGE SIGNS ARE INTENTIONALLY NOT SHOWN.
3. FOR ADVANCE WARNING SIGN ON SIDE STREET APPLICATION PLACE SIGN A MAXIMUM OF 200' FROM STOPLINE OR TRAFFIC CONTROL.
4. PLACE TEMPORARY STOP SIGN ON STAND AND MOVE FORWARD.
5. USE ONLY IN HIGH VOLUME AREA AS DIRECTED BY ENGINEER.

LANE CLOSURE WITH SHIFT, FARSIDE

LANE CLOSURES INTERSECTIONS	
CITY OF COLUMBUS, OHIO DEPARTMENT OF PUBLIC SERVICE DIVISION OF DESIGN AND CONSTRUCTION	STD DWG 1520
CITY ENGINEER	9/15/2015 SHT 5 OF 7



SCD 1500 NOTES

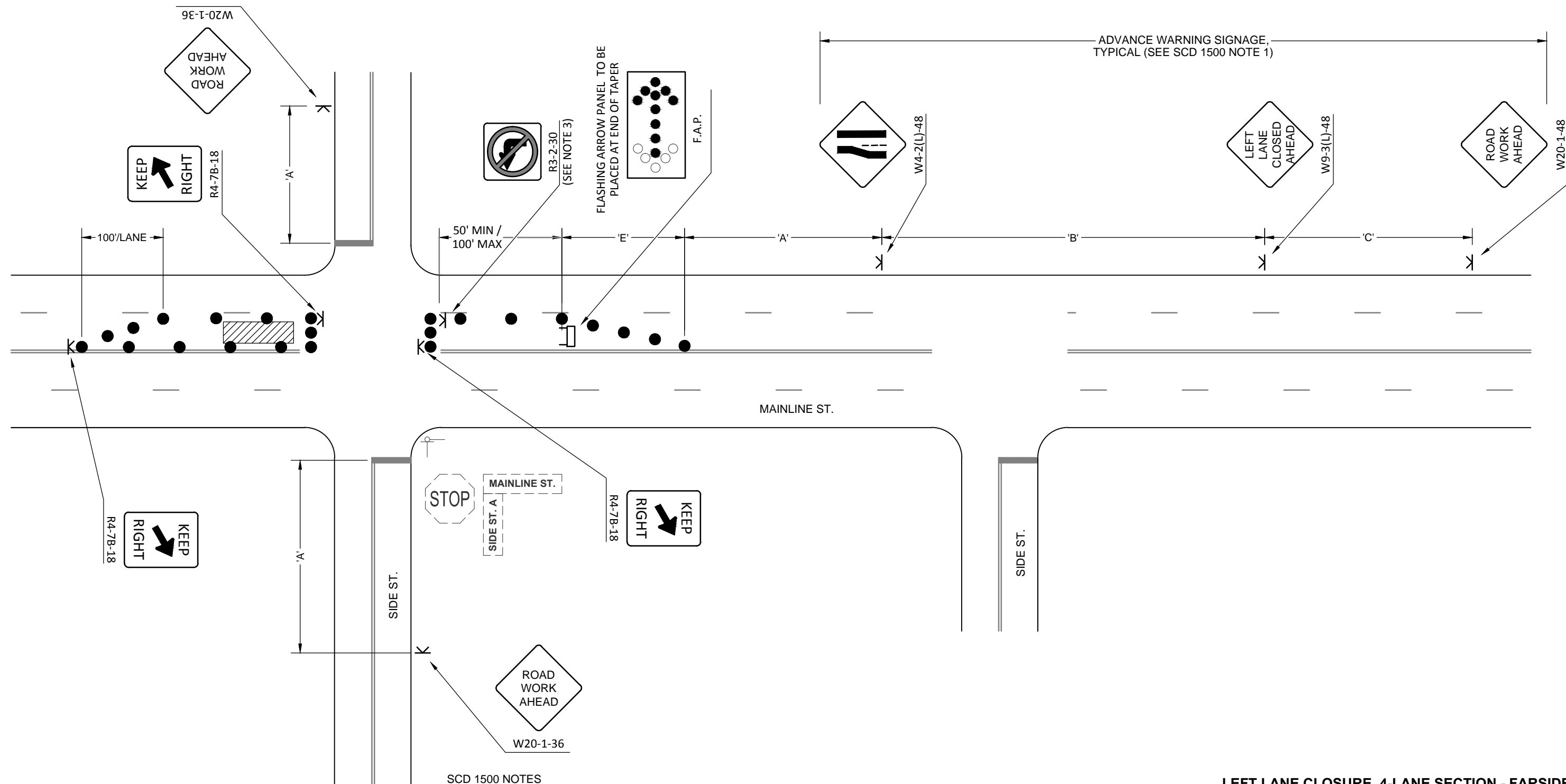
1A. SEE SCD 1500 NOTE 3. TAPER LENGTHS ARE TO BE CALCULATED USING FORMULAS FROM THE SCD 1500, TABLE 1.

NOTES

- FOR CLARITY SOME EXISTING TRAFFIC CONTROL AND LANE USAGE SIGNS ARE INTENTIONALLY NOT SHOWN.
- FOR ADVANCE WARNING SIGN ON SIDE STREET APPLICATION PLACE SIGN A MAXIMUM OF 200' FROM STOP LINE OR TRAFFIC CONTROL.
- USE ONLY IN HIGH VOLUME AREA AS DIRECTED BY ENGINEER.

RIGHT LANE CLOSURE, 4-LANE SECTION - FARSIDE

LANE CLOSURES INTERSECTIONS	
CITY OF COLUMBUS, OHIO DEPARTMENT OF PUBLIC SERVICE DIVISION OF DESIGN AND CONSTRUCTION	STD DWG 1520
<i>Hassan Zahran</i> CITY ENGINEER	9/15/2015 SHT 6 OF 7



SCD 1500 NOTES

1A. SEE SCD 1500 NOTE 3. TAPER LENGTHS ARE TO BE CALCULATED USING FORMULAS FROM THE SCD 1500, TABLE 1.

NOTES

- FOR CLARITY SOME EXISTING TRAFFIC CONTROL AND LANE USAGE SIGNS ARE INTENTIONALLY NOT SHOWN.
- FOR ADVANCE WARNING SIGN ON SIDE STREET APPLICATION PLACE SIGN A MAXIMUM OF 200' FROM STOP LINE OR TRAFFIC CONTROL.
- USE ONLY IN HIGH VOLUME AREA AS DIRECTED BY ENGINEER.

LEFT LANE CLOSURE, 4-LANE SECTION - FARSIDE

LANE CLOSURES INTERSECTIONS

CITY OF COLUMBUS, OHIO
DEPARTMENT OF PUBLIC SERVICE
DIVISION OF DESIGN AND CONSTRUCTION

STD DWG

1520

Hassan Zahran
CITY ENGINEER

9/15/2015

SHT 7 OF 7