

ADVANCE WARNING SIGNAGE,
TYPICAL (SEE SCD 1500 SHEET 1, NOTE 1)

SCD 1500 NOTES

1A. SEE SCD 1500 NOTE 3. TAPER LENGTHS ARE TO BE CALCULATED USING FORMULAS FROM THE SCD 1500, TABLE 1: TAPER LENGTHS FOR TEMPORARY TRAFFIC CONTROL ZONES.

NOTES

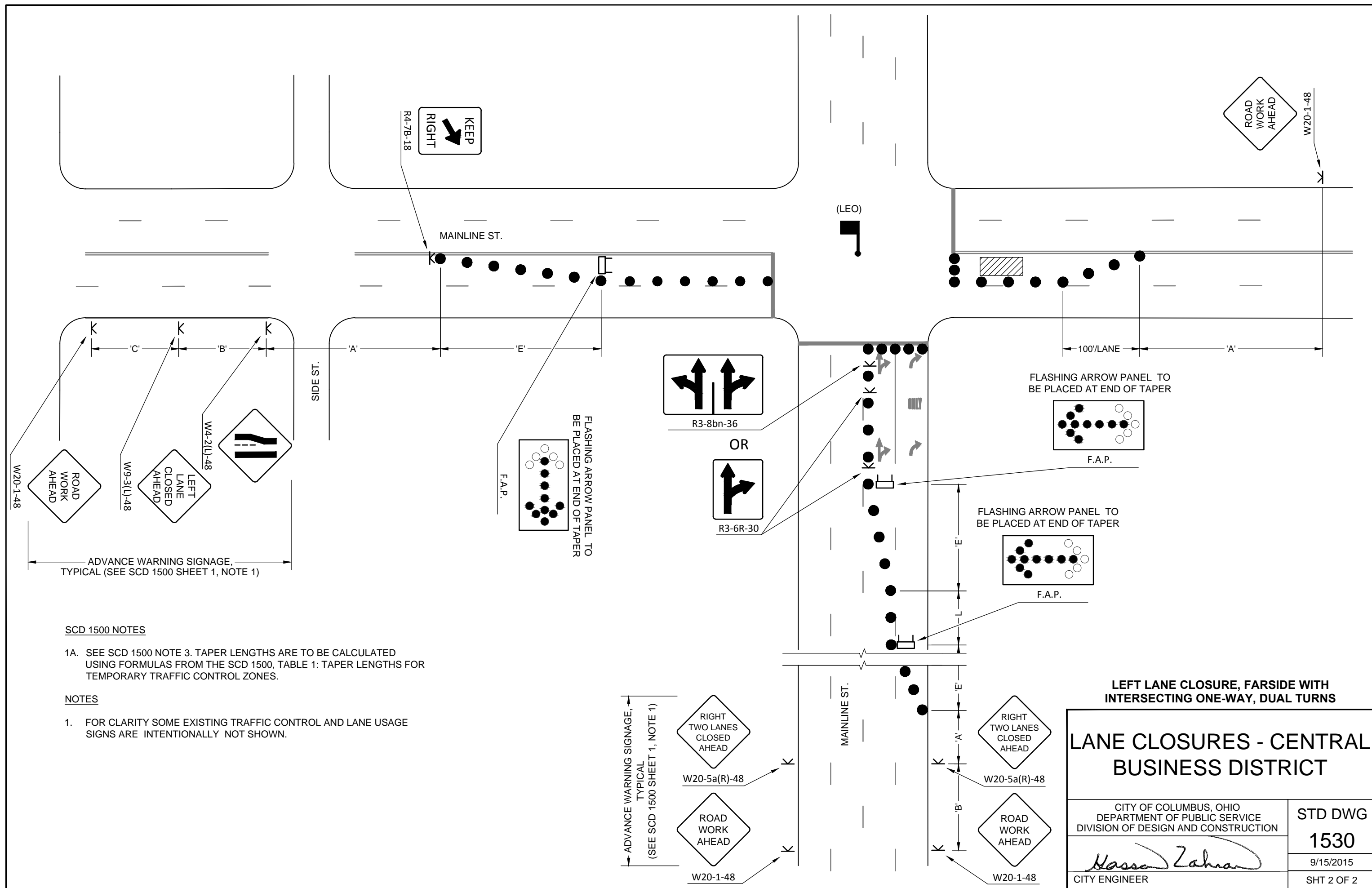
1. FOR ADDITIONAL NOTES, TABLES, AND SYMBOL LEGEND SEE CITY OF COLUMBUS STANDARD CONSTRUCTION DRAWING 1500.
2. FOR CLARITY SOME EXISTING TRAFFIC CONTROL AND LANE USAGE SIGNS ARE INTENTIONALLY NOT SHOWN.

ADVANCE WARNING SIGNAGE,
TYPICAL (SEE SCD 1500 SHEET 1, NOTE 1)

RIGHT LANE CLOSURE, FAR SIDE WITH INTERSECTING ONE-WAY, DUAL TURNS

LANE CLOSURES - CENTRAL BUSINESS DISTRICT

CITY OF COLUMBUS, OHIO DEPARTMENT OF PUBLIC SERVICE DIVISION OF DESIGN AND CONSTRUCTION	STD DWG 1530
<i>Hassan Zahran</i> CITY ENGINEER	9/15/2015
	SHT 1 OF 2



SCD 1500 NOTES

1A. SEE SCD 1500 NOTE 3. TAPER LENGTHS ARE TO BE CALCULATED USING FORMULAS FROM THE SCD 1500, TABLE 1: TAPER LENGTHS FOR TEMPORARY TRAFFIC CONTROL ZONES.

NOTES

1. FOR CLARITY SOME EXISTING TRAFFIC CONTROL AND LANE USAGE SIGNS ARE INTENTIONALLY NOT SHOWN.

LEFT LANE CLOSURE, FAR SIDE WITH INTERSECTING ONE-WAY, DUAL TURNS

LANE CLOSURES - CENTRAL BUSINESS DISTRICT	
CITY OF COLUMBUS, OHIO DEPARTMENT OF PUBLIC SERVICE DIVISION OF DESIGN AND CONSTRUCTION	STD DWG 1530
<i>Hassan Zahran</i> CITY ENGINEER	9/15/2015 SHT 2 OF 2