

# GreenbergFarrow

1430 W. PEACHTREE ST. NW SUITE 200  
ATLANTA, GA 30309  
t: 404.601.4000 f: 404.601.3970

## PROJECT INFORMATION

### TREE MITIGATION INFORMATION

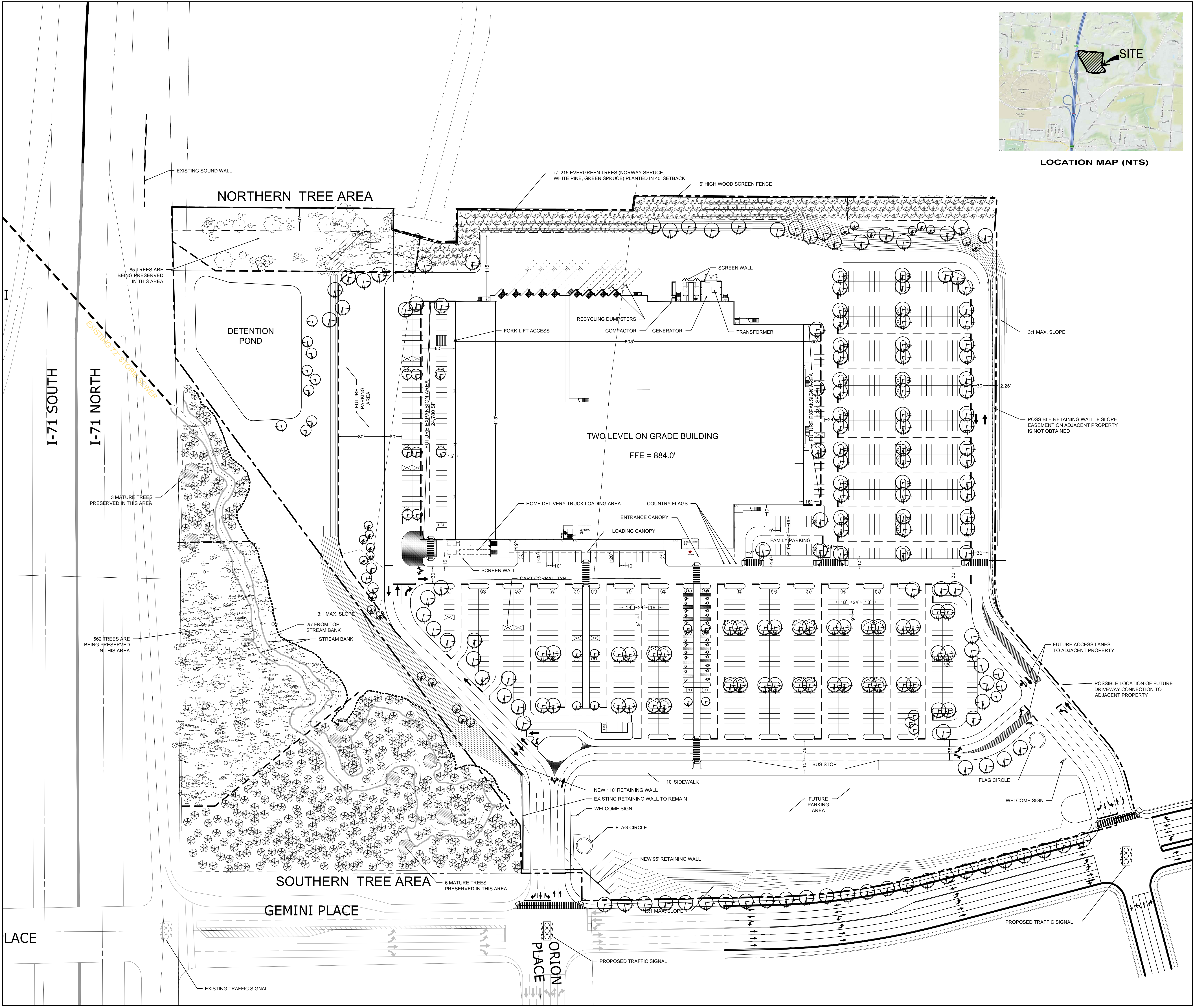
- EXISTING MATURE TREES TO REMAIN
- NATIVE HARDWOOD TREES TO BE PLANTED

### TREE PRESERVATION BREAKDOWN

- IN NORTHERN TREE AREA 85 MATURE TREES 3" CALIPER AND LARGER ARE TO REMAIN.
- THE SOUTHERN TREE AREA CURRENTLY CONSISTS OF A TOTAL OF 1185 TREES, 3" CALIPER AND LARGER.
- IN THE ENTIRE SOUTHERN TREE AREA, 571 TREES 3" CALIPER AND LARGER SHALL BE PRESERVED.
- IN THE UPPER AND LOWER PORTIONS OF THE SOUTHERN TREE AREA, 9 LARGE MATURE TREES SHALL BE PRESERVED.
- IN THE SOUTHERN TREE AREA, NATIVE HARDWOOD TREES WILL BE PLANTED IN A RANDOM PATTERN, IN OPEN AREAS OR WHERE TREES HAVE BEEN REMOVED.



LOCATION MAP (NTS)



### DRAWING ISSUE/REVISION RECORD

12/22/14	TREE MITIGATION PLAN
07/20/15	UPDATED TREE PRESERVATION AND MITIGATION PLAN

SITE PLANNER  
SITE DEV. COORDINATOR

## POLARIS SITE COLUMBUS, OH

I-71 & GEMINI PLACE

GFA PROJECT NUMBER 20130804



## TREE PRESERVATION AND MITIGATION PLAN