

Memorandum

To Mark Timbrook, PE Page 1

CC

Subject Availble On-Street Parking Before and After Construction

From Steven Thompson, Eric Onderak

Date October 14, 2016

On-Street Parking

The number of on-street parking spaces will decrease after the construction of green infrastructure bumpouts along Chatham Road, Northridge Road, Blenheim Road, and Wynding Drive. Parking along Glenmont Avenue, Yaronia Drive (North and South) and Colerain Avenue will not be affected because the green infrastructure is located within the right-of-way without changes to the existing curb.

Along each street within the work limits of the project, the total number of parking spaces, and the number of parking spaces lost after construction of the green infrastructure were counted. Each parking space was assumed to be 22ft. long by 7ft. wide. The Table below and the attached Figure 1 summarizes the available on-street parking before and after construction, the percent decrease in available parking, and the total decrease in available parking along all streets within the project area on a per block basis.

Street Name	Pre-Construction Available Parking	Post-Construction Available Parking	Percent Decrease in Available Parking
Chatham (Indianola Ave. to Colerain Ave.)	52	44	15%
Northridge (Indianola Ave. to Colerain Ave.)	55	46	16%
Blenheim (Indianola Ave. to Colerain Ave.)	55	49	11%
Blenheim (Colerain Ave. to Granden Rd.)	25	22	12%
Glenmont	N/A	N/A	N/A
Wynding	50	41	18%
Yaronia	N/A	N/A	N/A
Total	237	202	15%

Overall, there is not a significant decrease in parking available. Most homes within the project area have driveways, so homeowners do not rely on on-street parking. During field visits to these locations, it was observed that less than 50% of available on-street parking was used.

Chatham Road

There are three bumpouts along Chatham Road that affect the number of on-street parking spaces available. Between Indianola Ave. and Colerain Ave. (one block) there are 52 parking spaces. After construction 8 parking spaces will be lost. This is approximately a 15% decrease in parking.

Northridge Road

There are three bumpouts along Northridge Road that affect the number of on-street parking spaces available. Between Indianola Ave. and Colerain Ave. (one block) there are a total of 55 parking spaces before construction of the green infrastructure. After construction, 9 parking spaces will be lost. This is approximately a 16% decrease in parking.

Blenheim Road and Colerain Avenue

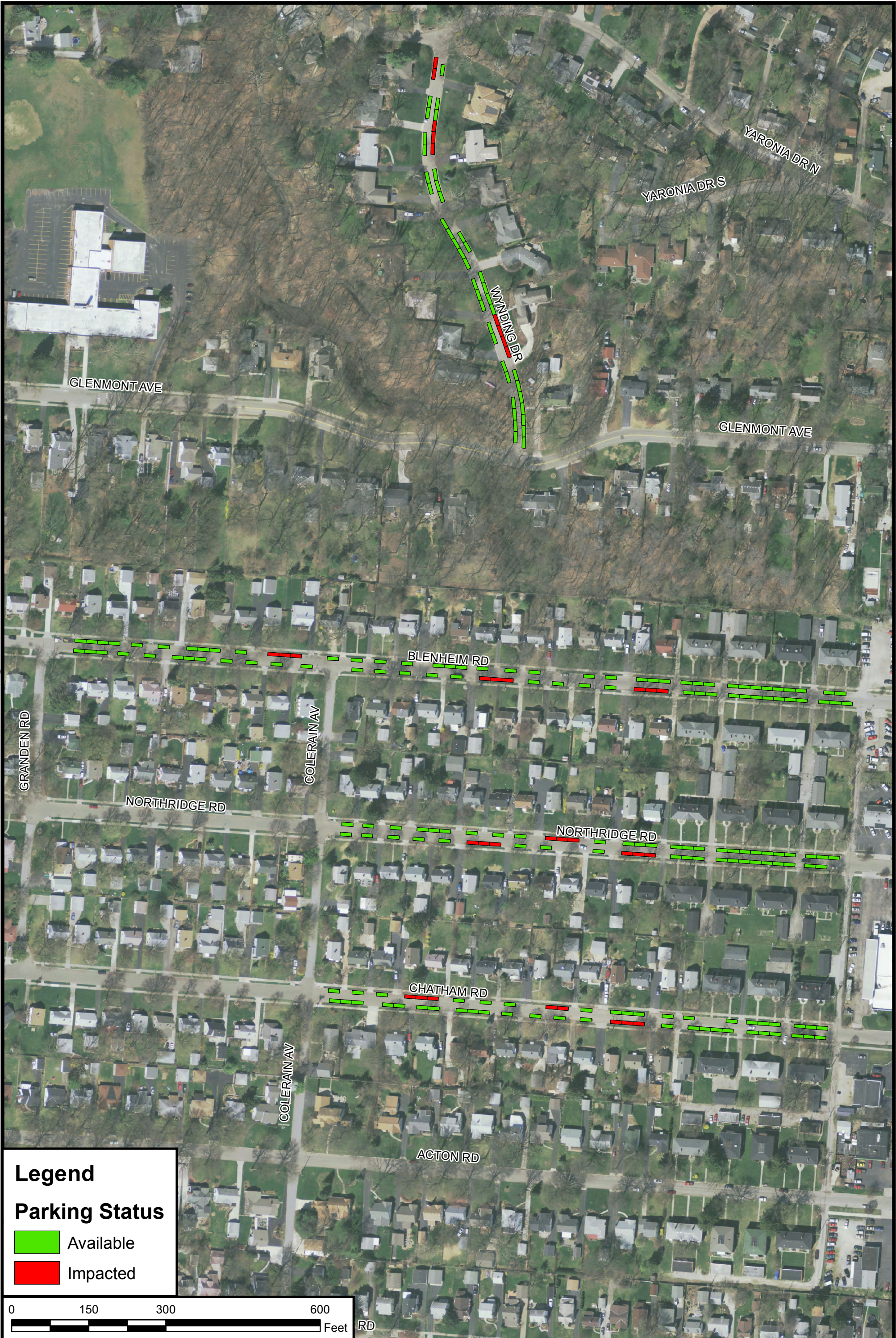
There are three bumpouts that will affect parking along Blenheim Road. The green infrastructure along Colerain Ave. will not affect on-street parking since it is within the edge of the road and the right-of-way. Between Indianola Ave. and Colerain Ave. (one block) there are 55 parking spaces along Blenheim Road. After construction, 6 parking spaces will be lost. This is approximately a 11% decrease in parking. Between Colerain Rd. and Granden Rd. (one block) there are 25 parking spaces along Blenheim Road. After construction, 3 parking spaces will be lost. This is approximately a 12% decrease in parking. The number of parking spaces along Colerain Avenue was not counted since there will be no change after construction.

Glenmont Avenue

There will be no loss in on-street parking along Glenmont Avenue. All green infrastructure is located between the existing edge of pavement and the right-of-way limit.

Wynding Drive and Yaronia Drive

There are three bumpouts along Wynding Drive that will affect the number of available on-street parking spaces. Between Glenmont Ave. and Yaronia Dr. (one block) there are a total of 50 parking spaces before construction of the green infrastructure bumpouts. After construction, 9 parking spaces will be lost. This is approximately a 18% decrease in the number of available on-street parking spaces. The green infrastructure at the intersection of Yaronia Drive South and Wynding Drive does not disturb existing parking. Yaronia Drive South is not paved at this intersection. Also, the green infrastructure at the intersection of Yaronia Drive South and Yaronia Drive North is between the existing edge of pavement and the right-of-way limit and will not affect available on-street parking.



Legend

Parking Status

Available

Impacted

