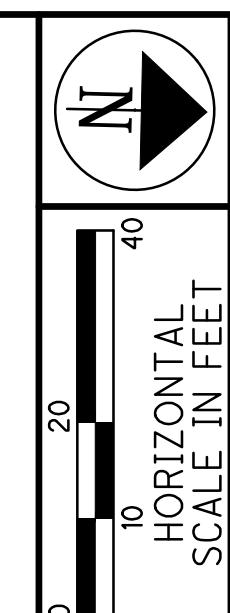


STATE OF OHIO
 COUNTY OF FRANKLIN, CITY OF COLUMBUS, Ohio, a Municipal Corporation
 SECTION 18 & 19, T 12, R 21
 REFUGEE LANDS

LEGEND
 ● RAILROAD SPIKE SET
 ● I.P.S. 5/8"X30" IRON PIN SET
 W/ CAP "ASI 8438"



PID NO.
 101787

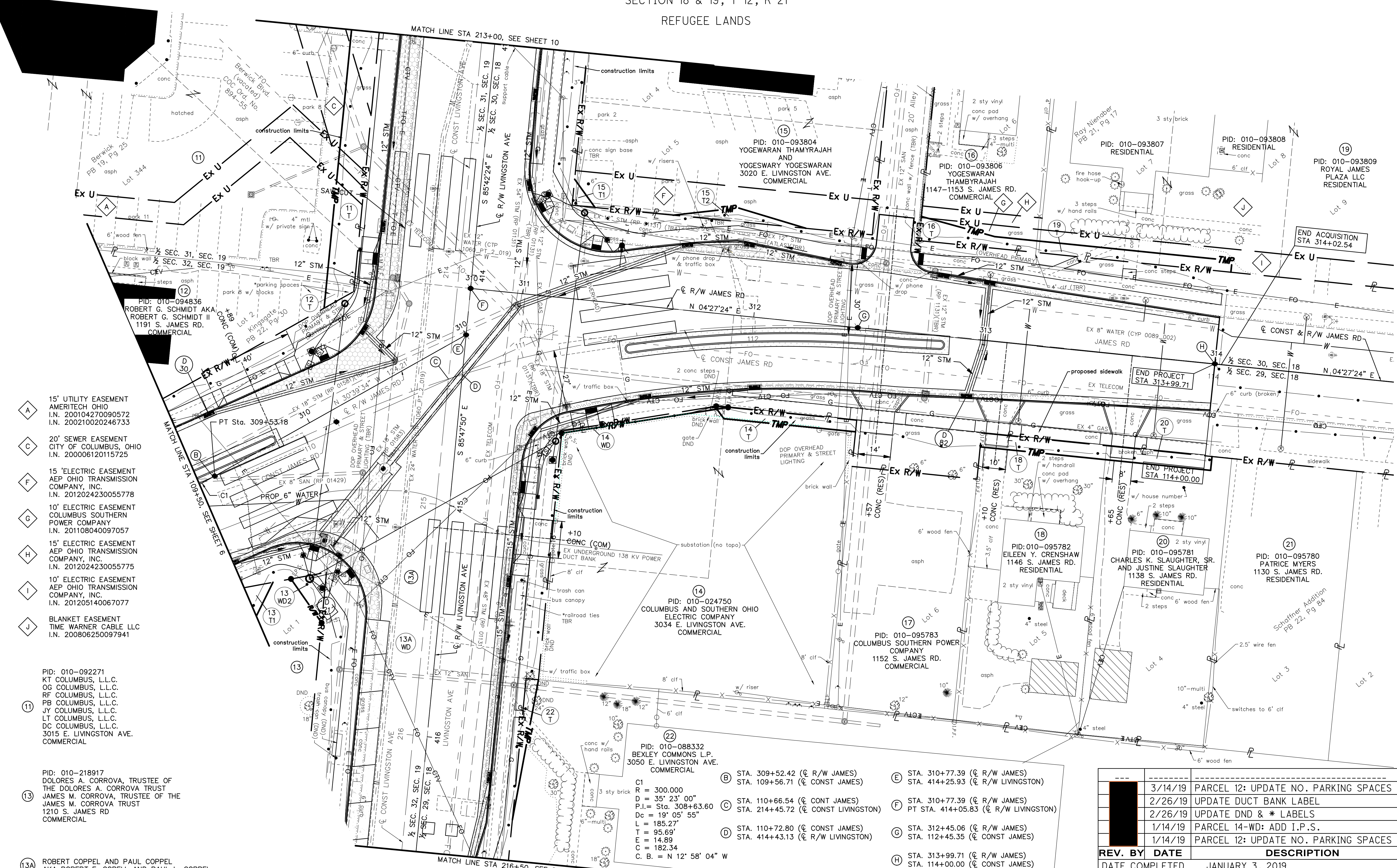
CALCULATED
 CHECKED

RIGHT OF WAY TOPO SHEET
 STA. 109+50 TO STA. 114+00

JAMES RD AT LIVINGSTON AVE

8 / 13

127
 132



- A 15' UTILITY EASEMENT AMERITECH OHIO I.N. 200104270090572 I.N. 200210020246733
- C 20' SEWER EASEMENT CITY OF COLUMBUS, OHIO I.N. 200006120115725
- F 15' ELECTRIC EASEMENT AEP OHIO TRANSMISSION COMPANY, INC. I.N. 201202423005778
- G 10' ELECTRIC EASEMENT COLUMBUS SOUTHERN POWER COMPANY I.N. 201108040097057
- H 15' ELECTRIC EASEMENT AEP OHIO TRANSMISSION COMPANY, INC. I.N. 201202423005775
- I 10' ELECTRIC EASEMENT AEP OHIO TRANSMISSION COMPANY, INC. I.N. 201205140067077
- J BLANKET EASEMENT TIME WARNER CABLE LLC I.N. 200806250097941

PID: 010-092271
 KT COLUMBUS, L.L.C.
 OG COLUMBUS, L.L.C.
 RF COLUMBUS, L.L.C.
 PB COLUMBUS, L.L.C.
 JY COLUMBUS, L.L.C.
 LT COLUMBUS, L.L.C.
 DC COLUMBUS, L.L.C.
 3015 E. LIVINGSTON AVE.
 COMMERCIAL

PID: 010-218917
 DOLORES A. CORROVA, TRUSTEE OF THE DOLORES A. CORROVA TRUST
 JAMES M. CORROVA, TRUSTEE OF THE JAMES M. CORROVA TRUST
 1210 S. JAMES RD
 COMMERCIAL

13A ROBERT COPPEL AND PAUL COPPEL
 AKA ROBERT F. COPELL AND PAUL L. COPPEL

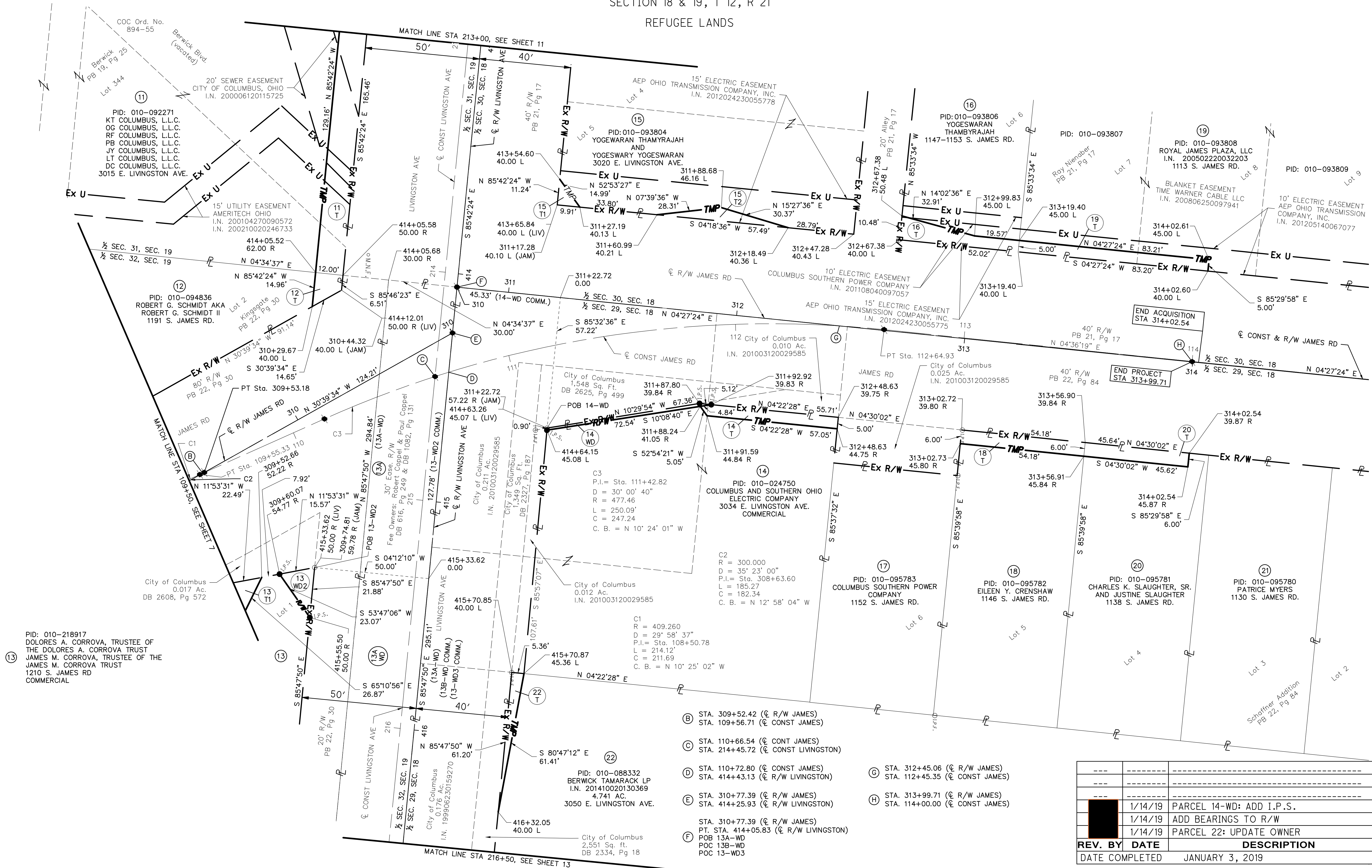
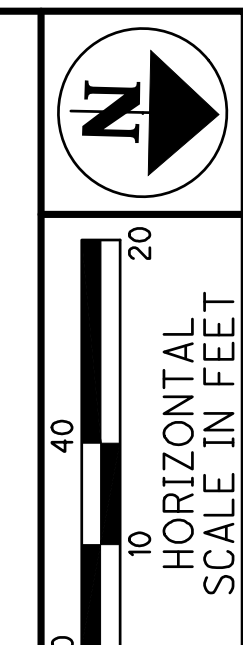
- ① STA. 309+52.42 (☉ R/W JAMES)
 STA. 109+56.71 (☉ CONST JAMES)
- ② STA. 110+66.54 (☉ CONST JAMES)
 STA. 214+45.72 (☉ CONST LIVINGSTON)
- ③ STA. 110+72.80 (☉ CONST JAMES)
 STA. 414+43.13 (☉ R/W LIVINGSTON)
- ④ STA. 310+77.39 (☉ R/W JAMES)
 STA. 414+25.93 (☉ R/W LIVINGSTON)
- ⑤ STA. 310+77.39 (☉ R/W JAMES)
 PT STA. 414+05.83 (☉ R/W LIVINGSTON)
- ⑥ STA. 312+45.06 (☉ R/W JAMES)
 STA. 112+45.35 (☉ CONST JAMES)
- ⑦ STA. 313+99.71 (☉ R/W JAMES)
 STA. 114+00.00 (☉ CONST JAMES)

REV. BY	DATE	DESCRIPTION
	3/14/19	PARCEL 12: UPDATE NO. PARKING SPACES
	2/26/19	UPDATE DUCT BANK LABEL
	2/26/19	UPDATE DND & * LABELS
	1/14/19	PARCEL 14-WD: ADD I.P.S.
	1/14/19	PARCEL 12: UPDATE NO. PARKING SPACES
DATE COMPLETED		JANUARY 3, 2019

3500 - E

STATE OF OHIO
 COUNTY OF FRANKLIN, CITY OF COLUMBUS, Ohio, a Municipal Corporation
 SECTION 18 & 19, T 12, R 21
 REFUGEE LANDS

LEGEND
 ● RAILROAD SPIKE SET
 ● I.P.S. 3/4"x30" IRON PIN SET W/ CAP "ASI 8438"



- (B) STA. 309+52.42 (R/W JAMES)
STA. 109+56.71 (CONST JAMES)
- (C) STA. 110+66.54 (CONST JAMES)
STA. 214+45.72 (CONST LIVINGSTON)
- (D) STA. 110+72.80 (CONST JAMES)
STA. 414+43.13 (CONST R/W LIVINGSTON)
- (E) STA. 310+77.39 (R/W JAMES)
STA. 414+25.93 (R/W LIVINGSTON)
- (F) STA. 310+77.39 (R/W JAMES)
PT. STA. 414+05.83 (R/W LIVINGSTON)
POB 13A-WD
POC 13B-WD
POC 13-WD3
- (G) STA. 312+45.06 (R/W JAMES)
STA. 112+45.35 (CONST JAMES)
- (H) STA. 313+99.71 (R/W JAMES)
STA. 114+00.00 (CONST JAMES)

REV. BY	DATE	DESCRIPTION
	1/14/19	PARCEL 14-WD: ADD I.P.S.
	1/14/19	ADD BEARINGS TO R/W
	1/14/19	PARCEL 22: UPDATE OWNER
DATE COMPLETED		JANUARY 3, 2019

PID: 010-218917
 DOLORES A. CORROVA, TRUSTEE OF
 THE DOLORES A. CORROVA TRUST
 JAMES M. CORROVA, TRUSTEE OF THE
 JAMES M. CORROVA TRUST
 1210 S. JAMES RD
 COMMERCIAL

PID NO.
101787

CALCULATED
 CHECKED

RIGHT OF WAY BOUNDARY SHEET
 STA. 109+50 TO STA. 114+00

JAMES RD AT LIVINGSTON AVE

9 / 13

128
 132

3500 - E

