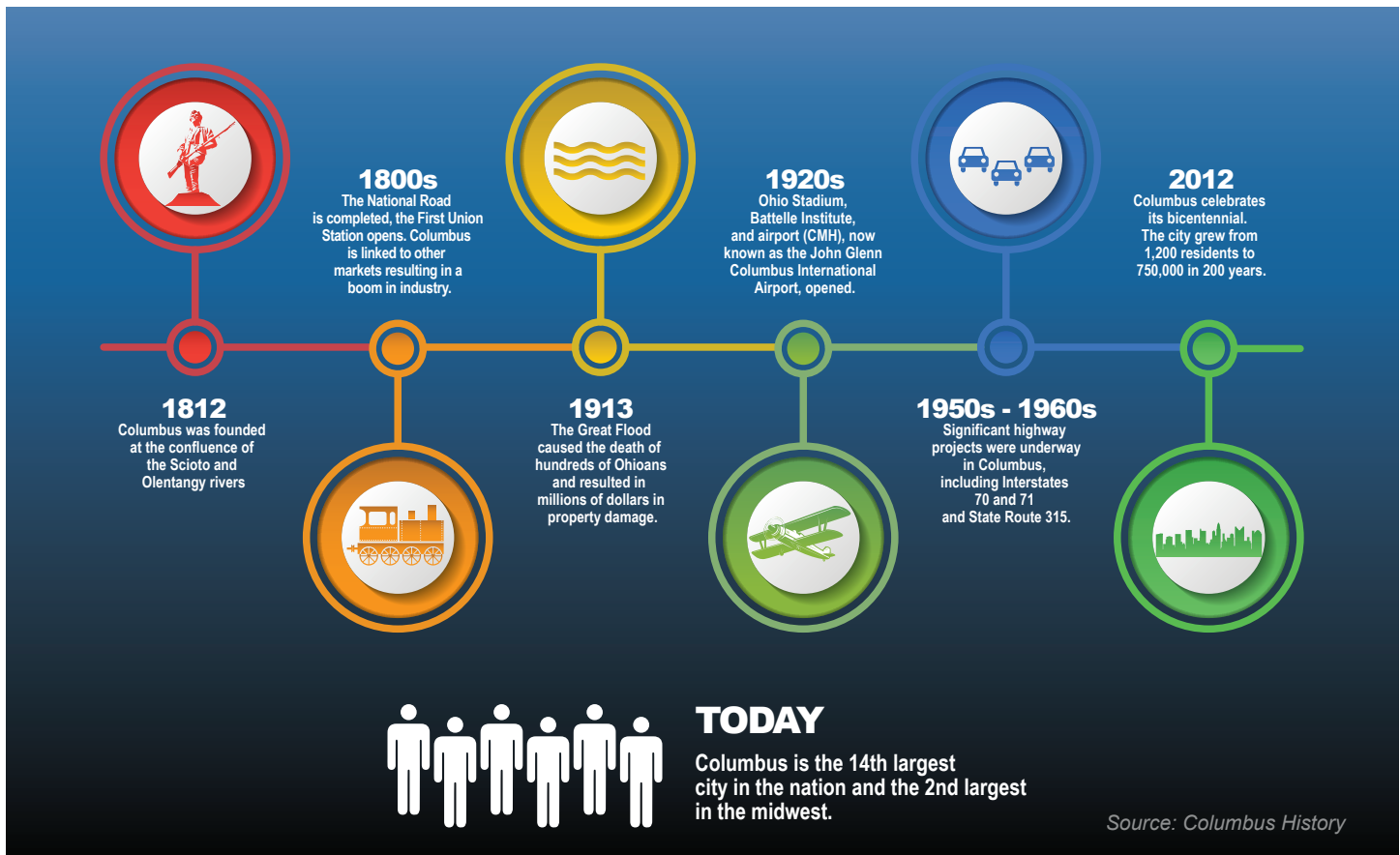


Columbus Community Profile

THE CITY OF
COLUMBUS



Columbus was founded in 1812 at the confluence of the Scioto and Olentangy rivers. In 1803, the year of Ohio's statehood, the capital was moved from Chillicothe, located 45 miles to the south, to Zanesville, located 50 miles to the east, and back to Chillicothe. Created specifically to be the capital city, state officials finally selected a centralized location in Columbus in 1812 and the city officially became Ohio's permanent capital in 1816.

Currently, Columbus maintains its ranking of the 14th most populated city in the United States. Covering 226 square

miles, the city is recognized nationwide for its historic neighborhoods, booming downtown arts and sporting districts, open attitude, and notably affordable quality of life. The city's economy is very diverse, and the community prides itself on being at the forefront of education reform, fiscal responsibility, and public safety.

Economic investments in the future of Columbus have created jobs and spurred major initiatives focused on improving neighborhoods, community health, and the environment.

Columbus Government



The city is a home-rule municipal corporation operating under the laws of Ohio. The City Charter, its constitution, can only be amended by a majority of the city’s voters.

The city is administered by a Mayor, a nine-member City Council, the City Auditor, and the City Attorney. The Mayor is elected in an odd numbered year and the City Auditor and the City Attorney are elected in the following odd numbered year. City Council members are elected at large to four-year terms at two-year intervals and operate through a hybrid at-large districting system. The City Charter provides for appointments and elections of successors to these officials if they should, for any reason, vacate their office. All are chosen through a non-partisan process.

The Recreation and Parks Director, the Health Commissioner, and the Civil Service Executive Director are appointed by, and report to, independent commissions. The City Treasurer and Clerk to the Council are appointed by, and serve at the pleasure of, City Council. All other departments’ directors are appointed by, and serve at the pleasure of the Mayor.

Stay Connected

Visit our new Columbus.gov website which features a new mobile friendly layout, service-centric navigation, improved search, and language translation tools.



Key City Services at a Glance

Development

Annual Average Emergency & Non-Emergency Requests	38,644
Annual Average Code Violation Notices	17,800

Neighborhoods

Neighborhood Pride Centers	5
311 Service Requests Received in 2023	332,280

Public Health

Licensed Food Facilities	
Compliant with Health Standards	98.6%
Annual Average Immunizations	25,000

Public Safety

Total Fire & EMS Calls	172,216
Fire Stations	35
Police Substation	17
Total 911 Police Service Calls	682,813

Public Service

Roadway Lane Miles Maintained	5,678 Miles
Refuse Total Households Serviced	350,000
Recycling Tons Collected	32,000
Bridges Maintained	209

Public Utilities

City-Owned Sewer and Water Lines Maintained	7,189 Miles
Wastewater Reclamation Facilities	2
Water Treatment Plants	3
Gallons of Wastewater Treated (2023)	66 Billion
Gallons of Drinking Water Treated	53 Billion
Service Population	1.4 Million Customers
City Power Customers	18,793

Recreation & Parks

Park Sites	422
Acres Maintained (Including Reservoirs)	15,844
Swimming Pools, Spray Grounds, Splash Pads & Fountains	16
Golf Courses	6
Multi-Use Trails	131 Miles
Community Centers & Specialty Facilities	32
Athletic Complexes	5

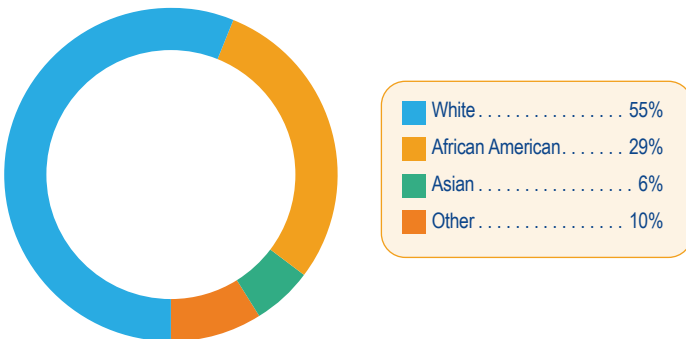
Columbus Demographics



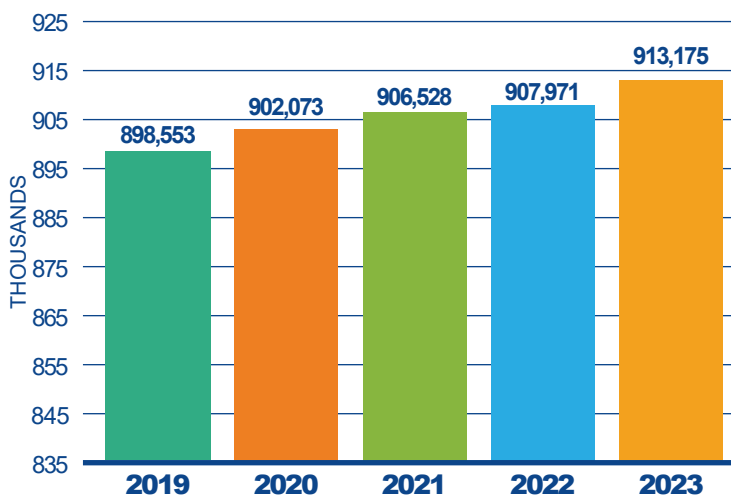
The population of Columbus is diverse, young, and has a growth rate double the national average. The city's population is well educated, with over 38.5 percent having earned a bachelor's or advanced degree compared to the national average of 37.7 percent.

Source: U.S. Census Bureau

Racial Demographics



Population 5 Year Trend



Population Quick Facts

Population Size 913,175
Population per Square Mile 4,095

Population Growth Rate

COLUMBUS 0.6%
National Average 0.5%

Median Income

COLUMBUS \$61,727
National \$74,580

Median Age

COLUMBUS 33.3
National 38.5

Population by Age

Under 18 21.0%
18 to 65 67.5%
Over 65 11.5%

Sex

Female 50.5%
Male 49.5%

FUN FACT!

The population of Columbus grew faster than any other city in the nation during the second half of 2023.



Source: U.S. Census Bureau, Data USA

Columbus Transportation

Columbus is located in the heart of the Midwest, and is within a one day drive or one hour flight to nearly half of the population in the United States and one-third of the population in Canada. Eight major inter-states cross through Columbus, providing convenient access from coast to coast and benefiting in-state commerce. In recent years, Columbus was recognized by Inbound Logistics as one of the nation's logistical hotspots.

Source: Columbus Region

Columbus is also home to the **Columbus Regional Airport Authority** which connects central Ohio with the world through the operation of three airports:

John Glenn Columbus International Airport: Service to nearly 50 destination airports with over 130 daily flights and 8.4 million annual passengers.

Rickenbacker International Airport: A multimodal logistics hub serving international airfreight, cargo airlines, manufacturers, and distributors with almost 300,000 annual passengers.

Bolton Air Field: Services the needs of area businesses, private pilots, and aviation enthusiasts. In addition, Columbus is also home to **The Ohio State University Airport**, with over 75,000 operations a year, including corporate activity, student training, and pleasure flying.

Source: Columbus Regional Airport Authority

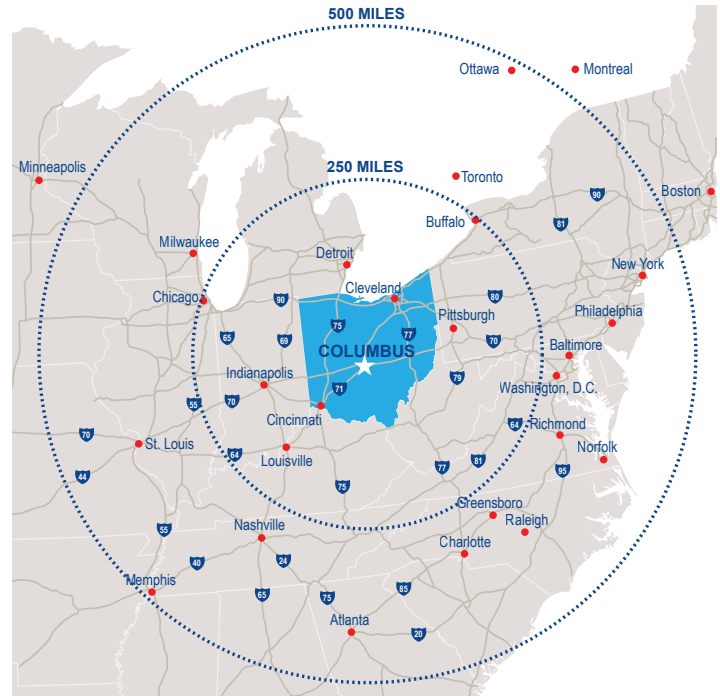
Other Means of Getting Around Columbus:

Public Transportation: The Central Ohio Transit Authority (**COTA**) provides bus service to over 11 million annual passengers with 38 total operational routes serving a 562 square mile area.

Sharing Services: COGO provides on demand access to over 600 bicycles located at more than 80 stations throughout downtown and adjoining neighborhoods. **Zipcar** provides car-sharing service in on-street parking spots Downtown, as well as the Short North, German Village, and Weinland Park. **Uber** and **Lyft** connect people in need of a ride with available drivers. Electric scooter share options are available through **Lime**, **Spin** and **Bird**.

Two Wheels: Columbus' bikeway program encourages traveling in and around Columbus via bicycles and maintains protected bike lanes and 240 miles of connected trails in the region.

Taxi Services: Pedicabs provide bike taxi service throughout downtown and taxicabs offer taxi service throughout the city.



Columbus Employment

Columbus serves as headquarters to major national and multinational corporations including Nationwide Mutual Insurance, L Brands, Huntington Bancshares, and American Electric Power (AEP). In recent years, the healthcare industry has emerged as a growth sector, with the city boasting four nationally recognized health system employers; each employ thousands of healthcare workers and contribute billions of dollars to the local economy.



Employer Name	Central Ohio Employees
The Ohio State University	36,433
Ohio Health	24,662
State of Ohio	24,217
JPMorgan Chase & Co.	18,600
Nationwide Children’s Hospital	14,037
The Kroger Co.	14,006
Nationwide Insurance	11,000
Amazon	9,262
City of Columbus	9,150
Mt. Carmel Health System	8,200
Honda	8,000
Cardinal Health Inc.	4,353
Bath & Body Works Inc.	4,052
Huntington Bancshares Inc.	3,776
Giant Eagle Inc.	3,500
Source: Columbus Business First: Largest Central Ohio Employers, Published July 2024	

Several major employers have made central Ohio home in recent years, investing millions of dollars in the local economy and expanding the region’s economic base. The table below lists private companies that have made recent significant investments in the Columbus economy.

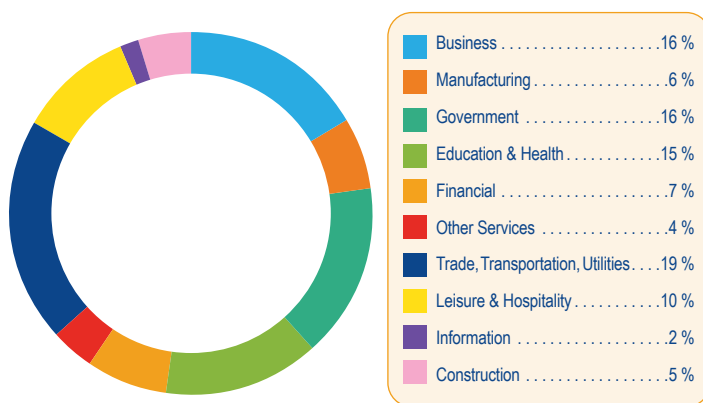
Company	Type	Product	Investment
Magellan Enterprises LLC	Data Center	Data Center	\$500 million
Hyperion	Fuel Cells	Fuel Cells	\$297 million
Nationwide Children’s Hospital / Andelyn Bioscience	Manufacturing Research/Development	Cell and Gene Therapy	\$115 million
Source: Ohio Private Investment Survey 2020-2022, Ohio Development Services Agency, June 2023			

Columbus Workforce Environment

Columbus has a stable, diverse employment environment with a large range of employment opportunities. All employment sectors have approximately 20 percent or less of the workforce, indicating the city is well diversified in this area.

In the last year alone, the construction sector has experienced growth of 5.6 percent. Education/Health sectors saw growth of 4.3 percent.

Source: U.S. Bureau of Labor Statistics



Largest Colleges & Universities

Educational opportunities in Columbus range from career training programs to top ranked schools and universities. Employers have access to a large, well-educated and highly skilled workforce. The city is home to more than 50 nearby colleges and universities, with a total enrollment of more than 120,000 students and over 22,000 annual graduates. In addition, Columbus offers a large variety of workforce development programs through community, technical, and vocational schools.

University	Enrollment
The Ohio State University	65,368
Columbus State CC	26,900
Franklin University	8,044
Capital University	2,617
Central Ohio Technical College	2,877

 THE OHIO STATE UNIVERSITY

COLUMBUS STATE
COMMUNITY COLLEGE

 FRANKLIN
UNIVERSITY

 CENTRAL OHIO
TECHNICAL
COLLEGE

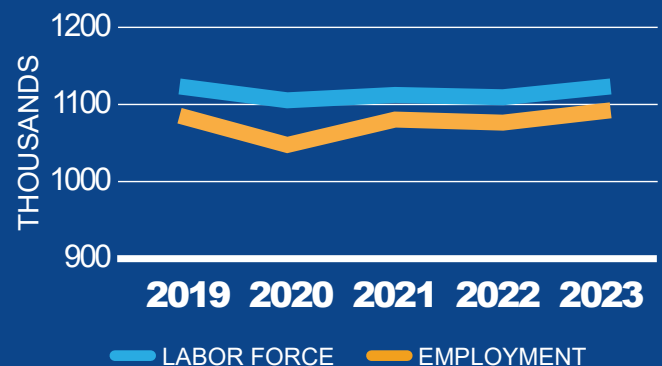
Capital
University

Source: Source: Columbusregion.com/colleges-universities/



Workforce Quick Facts

5 Year - Labor Force Trend



Workforce Size 1,167,300

Unemployment Rate

Columbus 4.8%
National Average 4.3%

Mean Hourly Wage

Columbus \$30.17
National Average \$31.48

Highest Paid Occupation

Management \$58.96

Lowest Paid Occupation

Food preparation \$15.57

Mean Travel Time to Work

Columbus 21.5 (minutes)
National Average 26.9 (minutes)

Source: U.S. Bureau of Labor Statistics, U.S. Census Bureau

Columbus Economic Development

Columbus ranks as the 14th largest city in the United States with a city population of 913,175. Population estimates are from the July 1, 2023 (V2023) U.S. Census Bureau residents.

- Columbus metropolitan statistical area (MSA): 2,161,511
(Source: US Census ACS 1-yr, 2022)
- Columbus enjoys a workforce of over 1.16 million, the median age of which is 33.3, or 5.6 years below the national average.
(Source: BLS and US Census ACS 1-yr, 2022 [U.S. Median age is 38.9])
- The annual cost of living in Columbus is ten percent below the national average.
(Source: PayScale.com)
- Fifteen Fortune 1000 companies operate their headquarters within the City of Columbus. .
(Source: ProximityOne.com)

The Columbus economy is balanced with a combination of education, technology, government, research, insurance and health care entities as major employers within the City. As one of the fastest growing cities in the United States, these diverse investments are indicators of a strong economy and continue to signal markets across the globe that Columbus is a great place to do business. Columbus frequently earns nationwide recognition for its booming downtown, historic neighborhoods, arts and sporting districts, open attitude, and a noticeably affordable quality of life. The City of Columbus remains on its growth trajectory from 2023 into 2024 and continues to absorb a tremendous number of net new jobs and investment throughout the City.



Downtown Development Quick Facts

Investments (\$)	
Proposed	\$1.7B
Under Construction	\$1.1B
Completed	\$228M

Largest Proposed Projects	
70/71 Final Two Phases	\$526M
Grant Medical Center Expansion	\$360M
Peninsula Phase 2	\$290M

Private and Public Investment	
Total 2011-2021	\$3.336B
Total Residents	12,000

Housing Units	
Proposed	1,831
Under Construction	1,609
Completed	650

Apartment Occupancy Rate	90%
--------------------------	-----

Office Vacancy Rate	21.1%
---------------------	-------

Colleges & Universities	
4 institutions with 37,264 students	
(Downtown - Columbus State Community College, Franklin University, Columbus College of Art & Design, Capital University Law School)	

Hotels	20
--------	----

Annual Visitors (2023)	over 5 million
------------------------	----------------

(Source: State of Downtown Columbus Year End 2023 prepared by Capital Crossroads & Discovery Special Improvement Districts.)

Columbus Economic Development

Chipotle was founded by Steve Ells with a single restaurant in 1993 as a brand committed to serving real, responsibly sourced ingredients. Chipotle now has more than 2,500 restaurants in the United States, United Kingdom, France, Canada and Germany. Chipotle committed to a significant expansion of their corporate offices in downtown Columbus. The project, which opened in 2022, was an investment of approximately \$3,750,000. The company occupies approximately 80,000 sq. ft. at 500 Neil Avenue. Additionally, Chipotle created 307 net new full-time permanent positions and retained 90 full-time positions.



Sarepta Therapeutics, Inc. was established in 1980 in Corvallis, Oregon. Sarepta is a global commercial biotechnology company focused on genetic medicine for rare diseases. Sarepta Therapeutics, Inc. invested approximately \$47,000,000 to establish laboratory and corporate operations at 3435 Stelzer Road. With this project, the company relocated and retained 38 existing full-time permanent positions and created 109 new full-time permanent positions within Columbus.



Coca-Cola Consolidated, Inc. is the largest Coca-Cola bottler in the United States. For 120 years, Coca-Cola Consolidated, Inc. has made, sold, and distributed beverages of The Coca-Cola Company. The company is investing a total of approximately \$82 million to construct new operations and distribution center within Columbus. The new construction will consist of an approximately 400,000 square-foot warehouse distribution facility, along with two separate facilities to service their products and vehicles. This project will create 12 net new full-time permanent positions and retain 329 full-time jobs.



Middle West Spirits, LLC is Ohio's award-winning craft distillery founded in 2008 by Brady Konya and Ryan Lang. The company has three operating locations in the Columbus area and produces small batch craft spirits. Middle West Spirits is investing approximately \$6,205,000 to redevelop a vacant industrial complex into an approximately 35,189 sq. ft. office, manufacturing and warehouse operation on Alum Creek Drive on the cities near east side. The company will retain and relocate 14 full-time jobs and create 13 net new full-time permanent positions.

**MIDDLE WEST
SPIRITS.**



Columbus Housing

The City of Columbus’ housing market is booming with trendy and desirable neighborhoods, affordable housing options, and a thriving local economy. The Columbus area jumped to 8th place on the Winter 2024 Wall Street Journal/Realtor.com Emerging Housing Markets Index after previously being listed as 9th in the Fall 2023 Index.

Columbus is known for its vibrant, unique neighborhoods. Throughout the city, there are a variety of living options with many neighborhoods consisting of smaller communities within its borders. Residents are able to live in areas that range from historically preserved German Village, to the popular Short North, or newly developed downtown condominiums.



Housing Quick Facts

Housing Units 415,456

Persons per Household

COLUMBUS 2.3
National Average 2.6

Ownership Rate

COLUMBUS 44.7%
National Average 64.8%

Median Home Value

COLUMBUS \$212,500
National \$281,900

Median Monthly Mortgage

COLUMBUS \$1,505
National \$1,828

Median Monthly Rent

COLUMBUS \$1,161
National \$1,268

Source: U.S. Census Bureau



Columbus Fun

Columbus is home to many renowned facilities, including the nationally ranked Columbus Zoo and Aquarium, COSI and Franklin Park Conservatory. Organizations such as the Columbus Symphony, Columbus Jazz Orchestra, Wexner Center for the Arts, and Opera Columbus provide year-round opportunities for live arts music performances.



Arts & Cultural Attractions

BalletMet
CATCO
Center of Science & Industry (COSI)
Columbus Children's Theatre
Columbus Cultural Arts Center
Columbus Jazz Orchestra
Columbus Museum of Art
Columbus Symphony Orchestra
Columbus Zoo & Aquarium
Franklin Park Conservatory
The King Arts Complex
Lincoln Theatre
Ohio History Connection
Ohio Theatre
Short North Stage
Opera Columbus
Palace Theatre
Shadowbox Theatre
Short North Arts District
Wexner Center For The Arts

Entertainment Venues



Sports Teams



Events and Activities in Columbus

Patrons of performing arts and theater find plenty to see in the offerings of local companies such as BalletMet, CATCO (Contemporary American Theatre Company), and the Columbus Children's Theatre. The city offers an exciting array of entertainment with special events, sporting events, and popular festivals throughout the year.



COLUMBUS RANKINGS

#1 Rankings

#1 Opportunity
City For Startups

Forbes

Fastest Growing
City In The
Midwest

Forbes

Best Science
Museum In The
Nation (COSI)



Largest Wage
Growth In The
Midwest



Notable Top Rankings

#3 Best
College
Towns

TimeOut

Top 10
Places For
Young
Professionals

Forbes

#8 Most
Climate-Resilient
Cities

AD
ARCHITECTURAL DIGEST

#5 Best
City For College
Graduates

**The
New York
Times**

Top 10 Best
Riverwalks
Across The U.S.



#2 Safest
Cities For
Families

b bestplaces

Best City
For Tech Workers

smartasset

Top 10 Best
Cities To Move
To

Forbes

America's
100 Best Cities

resonance

#2 City
In America For
Commerce

SITE
SELECTION
MAGAZINE

Community Profile

This page has been intentionally left blank.