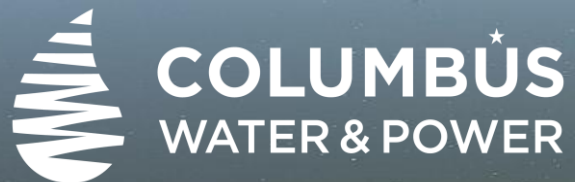


# 2025 ASCE Luncheon

Fang Cheng, PhD, PE

Division of Water Reclamation  
Sewer System Engineering Section  
Dec. 4<sup>th</sup> , 2025



# Collection System RFPs in late 2025 through 2026

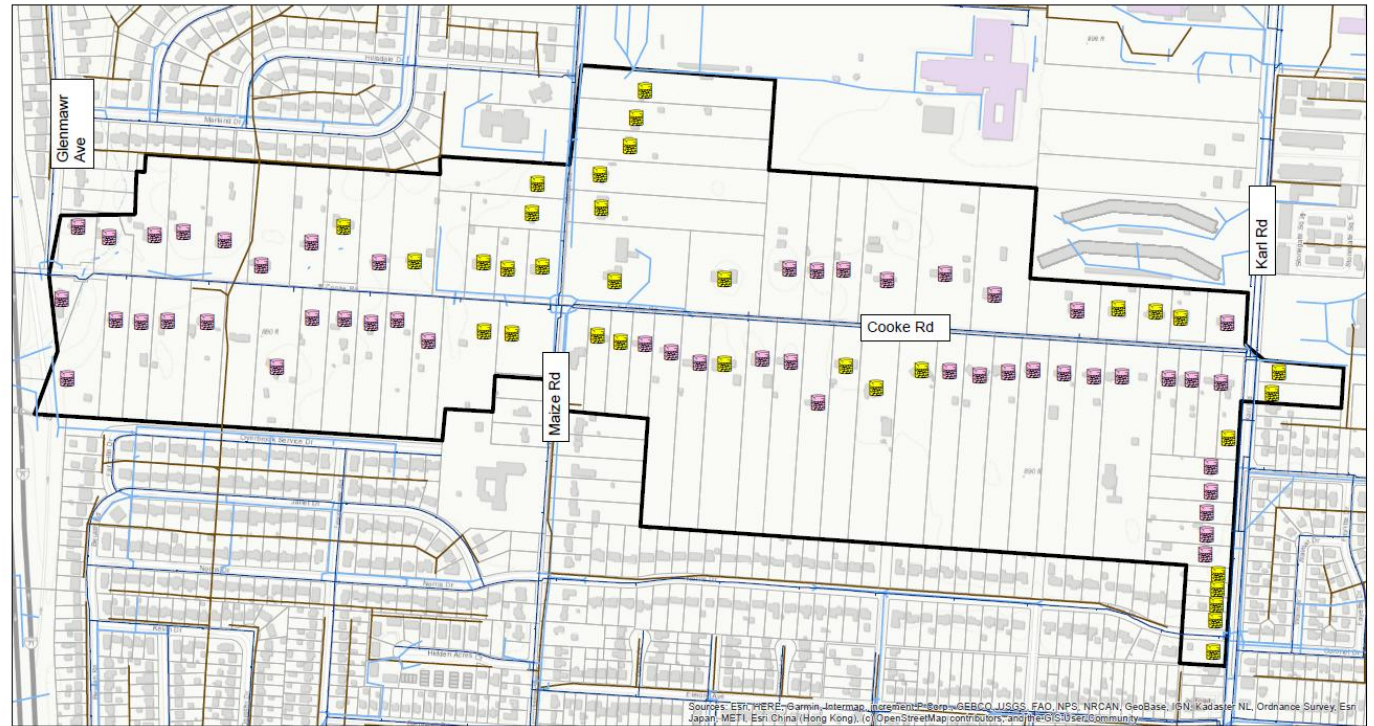
1. Maize Rd Cooke Rd HSTS Elimination
2. Towers Court Stormwater System Improvements
3. Twin Lakes Dredging and Bliss Run Channel Improvements
4. Storm Sewer Large Diameter Condition Assessment (Rehabilitation) Phase 1
5. Lower Olentangy Tunnel Phase 2
6. Inflow Redirection - Alum Creek Storm Tank Combined Sewer Area
7. Sewer System Capacity Model Update 2026
8. Overall Engineering Contract - OEC 2025-2027
9. Clinton No. 3 Trunk Sewer Rehabilitation (Phase 1)



# Maize Rd Cooke Rd HSTS Elimination

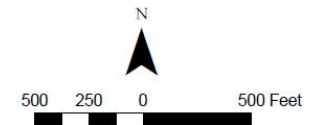
- Partner with Franklin County Sewer Engineer
- 33 HSTS in Columbus
- 49 HSTS in Franklin County
- ~ 7,000 ft of sewer

Maize Rd & Cooke Rd HSTS Elimination  
CIP 650895-100010



## Legend

- |                       |                |
|-----------------------|----------------|
| Franklin County HSTS  | SANITARY       |
| City of Columbus HSTS | STORM          |
| Water Main            | Tributary Area |



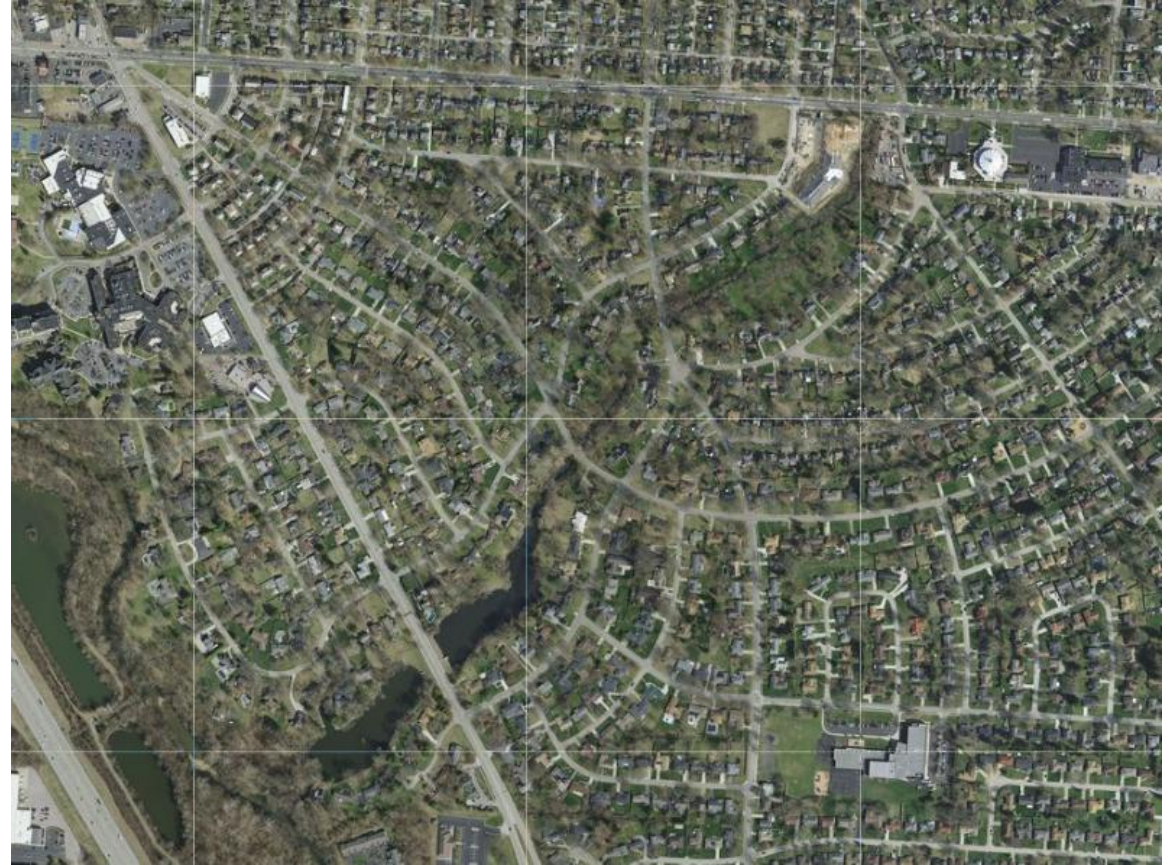
- North of Livingston Avenue, between Barnett Road and James Road
- Chronical street ponding
- Conveyance and/or detention





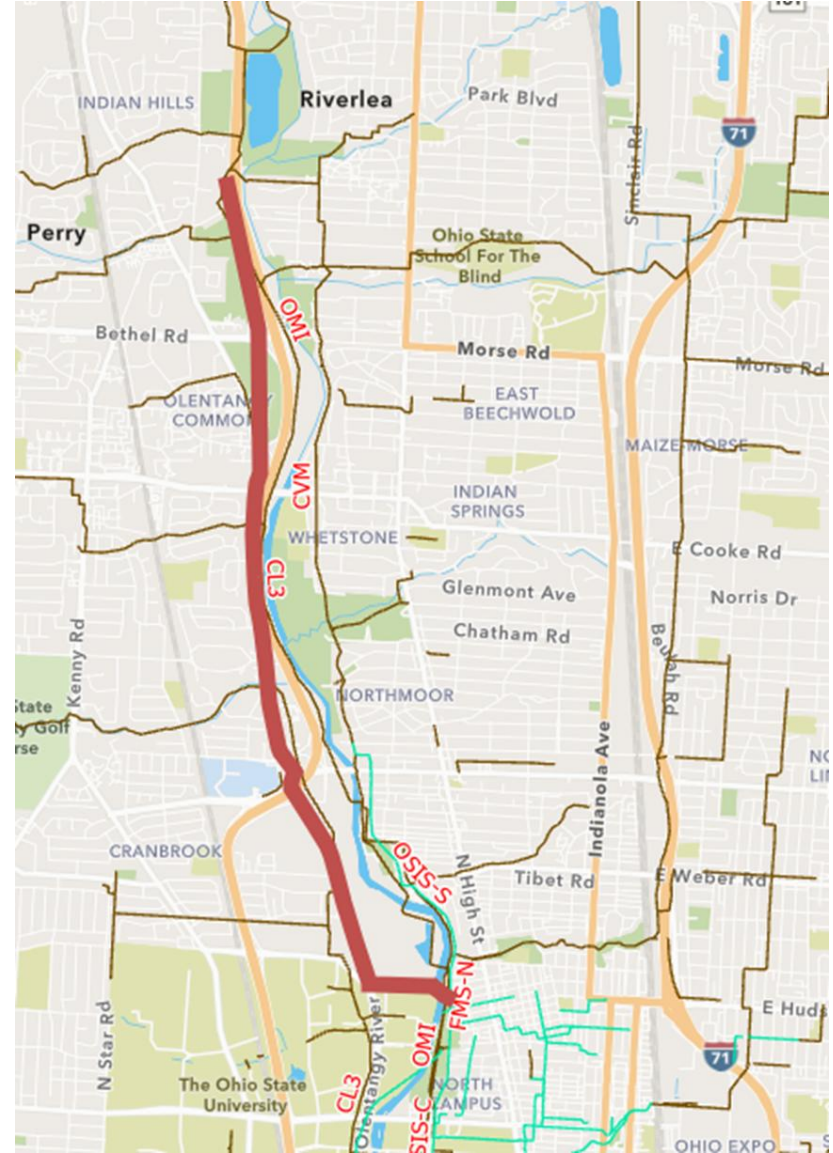
# Twin Lakes Dredging and Bliss Run Channel Improvements

- College Ave. South of Livingston Ave.
- Sedimentation issues in both lakes
- Yard flooding in Bliss Run upstream of the lakes



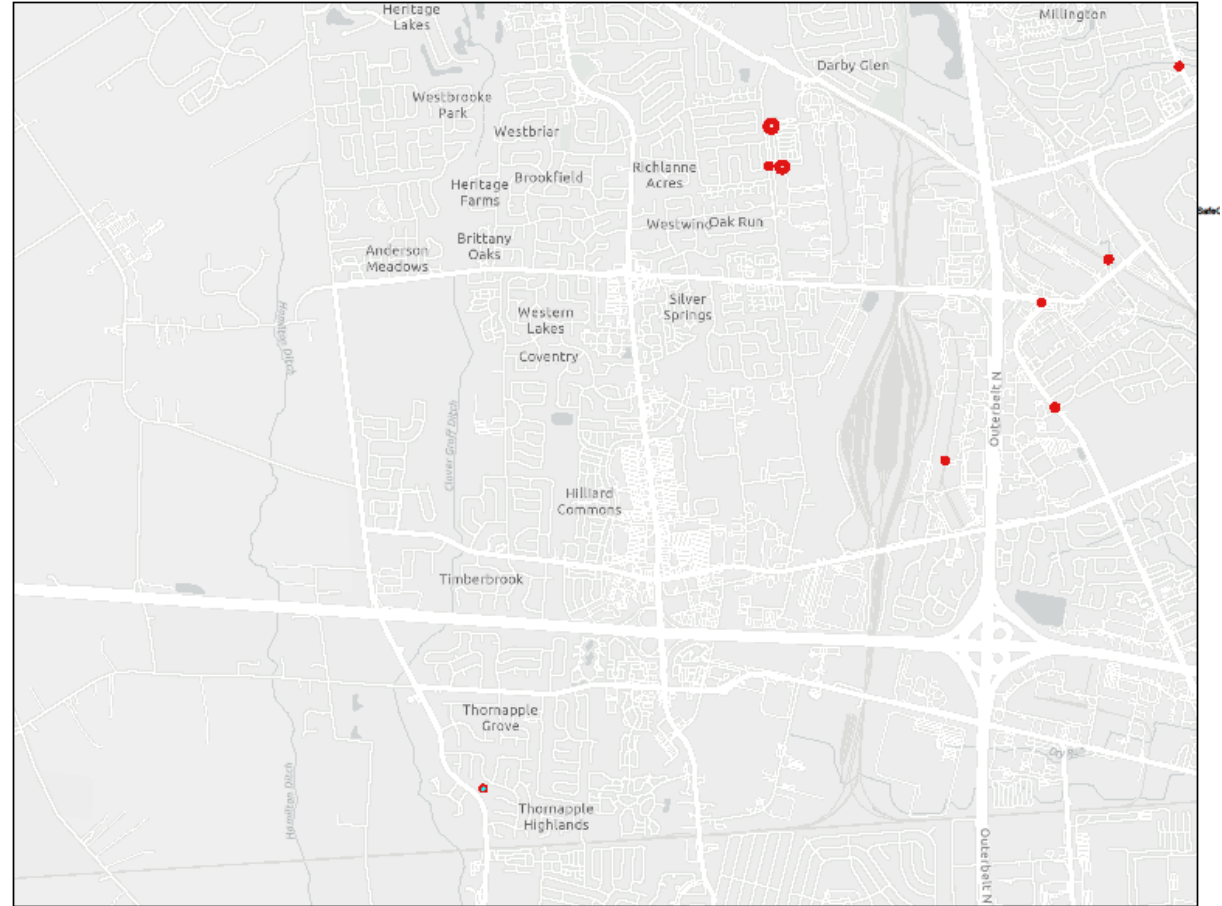
## Lower Olentangy Tunnel Phase 2

- Extending LOT to near Antrim Park
- < 9ft in diameter
- ~ 4.5 miles in length
- Exploring alignments and alternatives



# Storm Sewer Large Diameter Rehabilitation Phase 1

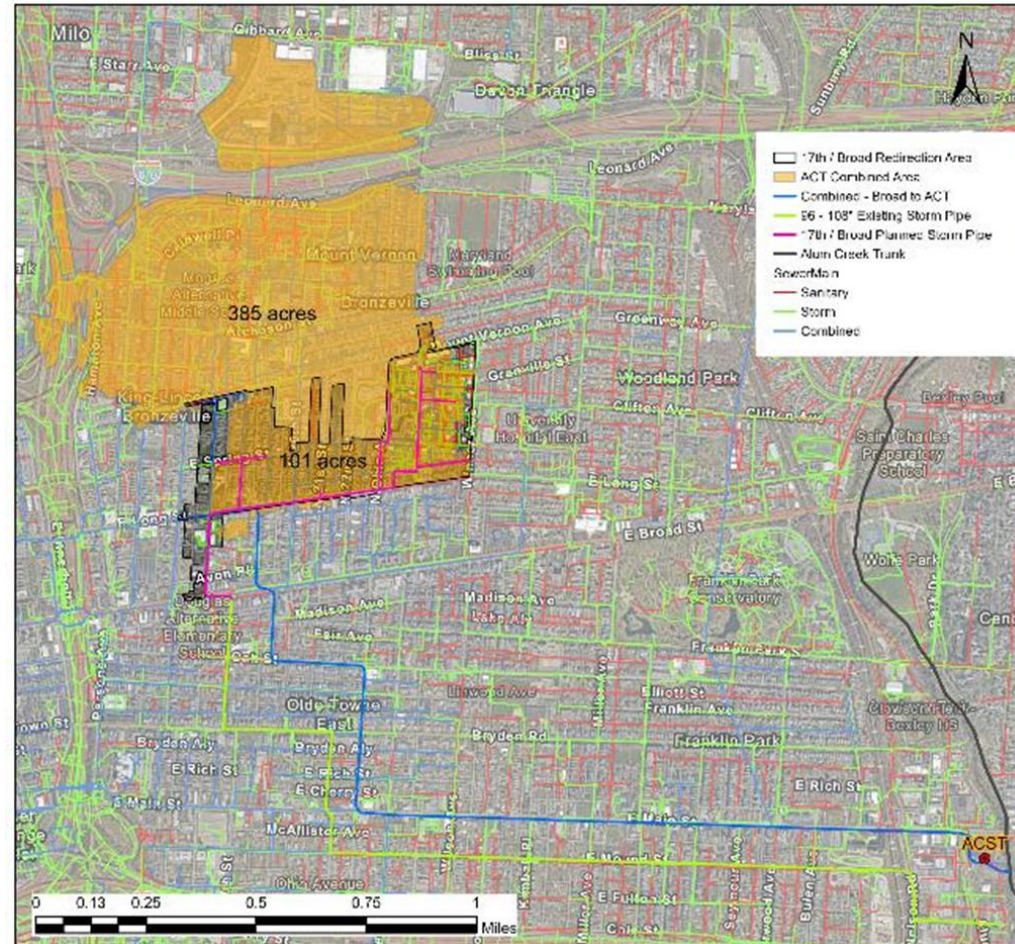
- Based on the findings of the condition assessment
- 500 LF of storm sewer requires design for full pipe rehabilitation, with additional design for spot and joint repairs.
- Storm pipe materials include CMP and RCP ranging from 42" to 98" diameter
- 18 Manholes identified for rehabilitation





# Inflow Redirection - Alum Creek Storm Tank Combined Sewer Area

- Separate storm runoff from the combined sewer system that could overflow into Alum Creek
- 385 acres
- New storm and/or sanitary sewer

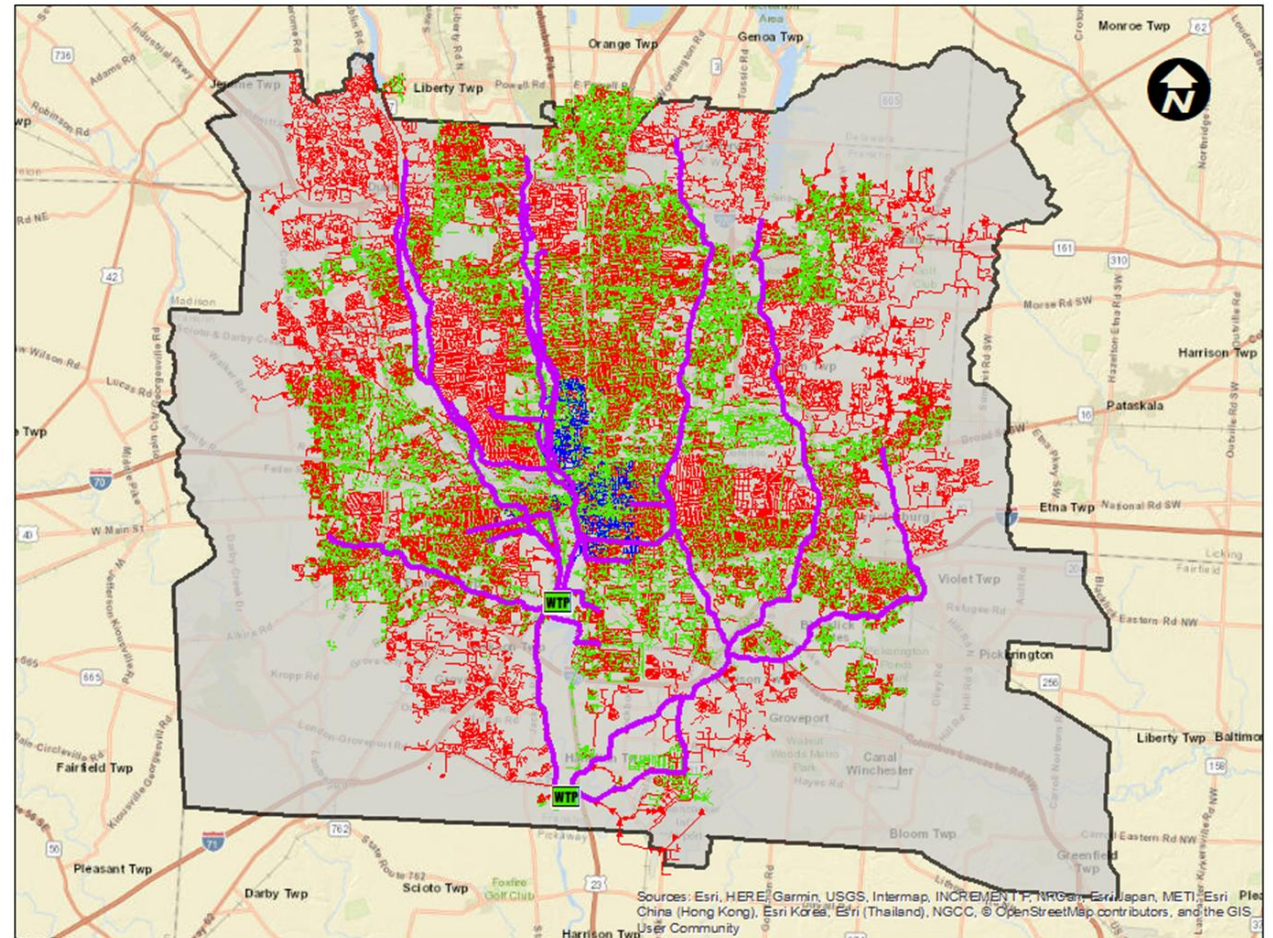




# Sewer System Capacity Model Update 2026

## Overall Engineering Consultant-OEC 2025-2027

- Planning contract
- Model refinement
- CIP support
- Capacity Review





## Clinton No. 3 Trunk Sewer Rehabilitation (Phase 1)

- 42" sanitary sewer
- 7,400 ft in length
- CIPP liner design





# Questions?



**COLUMBUS**  
WATER & POWER