



# Existing Conditions Report

Eastmoor Blvd Safety & Mobility Improvements

City of Columbus

*Columbus, Ohio*

January 21, 2022

Prepared by consultant team of HDR, Burgess & Niple, and OHM

## Table of Contents

Introduction .....	1
Summary of Existing Conditions .....	2
Overview of Project Corridor.....	2
Non-motorized User Data .....	5
Bicycle, Pedestrian, and Traffic Calming Observations.....	6
311 Service Requests .....	7
Speed Analysis.....	9
Crash Analysis .....	11
Parking Utilization.....	11
Existing Conditions Diagram .....	16
Conclusion .....	17

## Appendices

- Appendix A: Raw Speed Data
- Appendix B: Collision Diagrams
- Appendix C: Raw Parking Utilization Data

## Tables

Table 1. Eastmoor Blvd Intersections in Project Corridor .....	5
Table 2. Average Daily Ridership for Bus Stops Near Study Area.....	6
Table 3. Speed Data Summary .....	10
Table 4. Total Number of Existing Spaces and Observed Parking Counts by Block.....	15
Table 5. Summary of Parking Utilization Findings .....	15
Table 6. Total Spaces Occupied and Total Occupancy Percentage by Observation Period .....	16

## Figures

Figure 1. Signs Seen Along Eastmoor Blvd.....	1
Figure 2. Map of Project Study Area .....	3
Figure 3. Typical Section of Eastmoor Blvd (made using Streetmix) .....	3
Figure 4. Aerial View of Eastmoor Blvd (via Google Earth).....	4
Figure 5. A Street-Level View of Eastmoor Blvd.....	4
Figure 6. Count of 311 Service Requests on Eastmoor Blvd by Type .....	7
Figure 7. Location Distribution of 311 SRs on Eastmoor Blvd .....	8
Figure 8. Speed Collection .....	9
Figure 9. Vehicles Traveling Faster than 50 mph by Hour of Day.....	10
Figure 10. Total Existing Available Parking Spaces by Block .....	12
Figure 11. Percent of Segments Occupied During Observation Period - Tuesday, September 28th, 2021 AM and PM .....	13
Figure 12. Percent of Segments Occupied During Observation Period - Thursday, September 30th, 2021 AM and PM .....	14
Figure 13. Existing Conditions Diagram .....	17

# Introduction

This document provides an overview of the existing conditions of the Eastmoor Blvd corridor between E Main St and E Broad St in Columbus, Ohio. Speeding is a key issue along Eastmoor Blvd and there is a documented history of speeding complaints and safety concerns by the residents in the area. This corridor is entirely residential and does not currently offer dedicated pedestrian or bicycle amenities. Most of the residents that live on the corridor have private driveways however curbside parking is available on both sides of the street. Traffic circles have previously been installed at two intersections along the project corridor, Eastmoor Blvd and Fair Ave and Eastmoor Blvd and Bexley Park Rd.

In the past, the Eastmoor Civic Association financed the installation of non-MUTCD signs along the corridor to alert drivers of the risks of speeding. These signs are shown in Image A of **Figure 1**. During a recent field visit, a few instances of yard signs placed by individual residents, such as those pictured in Image B of **Figure 1** below, were seen.



*Image A. Pole-mounted Signs*



*Image B. Yard Signs*

**Figure 1. Signs Seen Along Eastmoor Blvd**

A variety of data was used to assess the existing conditions of the corridor. Traffic count data along Eastmoor Blvd was collected in recent years. Speed data was collected for three locations along the corridor over a 72-hour period. The project team conducted pedestrian and bicycle observations during peak weekday and weekend hours to understand the non-vehicle activity along the corridor. In addition, other relevant non-motorized user data was provided. Parking counts were collected to determine the utilization of the on-street parking and crash data was provided to be used for a safety evaluation.

This document includes the following elements:

- Overview of Project Corridor
- Non-motorized User Data
- Pedestrian and Bicycle Activity
- 311 Service Requests
- Speed Analysis
- Crash Analysis
- Parking Utilization
- Conclusion

This Existing Conditions Report will provide the framework for the remainder of this project, the overall goal of which is to provide a plan for Eastmoor Blvd to improve the safety for all users and provide more options for active transportation users.

## Summary of Existing Conditions

### Overview of Project Corridor

Eastmoor Blvd is a tree-lined residential street with single-family homes with private driveways lining the corridor. The roadway consists of one lane of travel in each direction with double yellow striping down the centerline and unstriped parking on each side. There are no sidewalks or pedestrian treatments along the project corridor except for those that serve the intersections at each of the segment's endpoints, E Main St and E Broad St. The curb-to-curb width is 40 feet and remains consistent throughout the length of the corridor. A map of the project study area is shown in **Figure 2**. A typical section for the Eastmoor Blvd corridor is shown in **Figure 3**. As the only existing pavement marking on the roadway is the double yellow centerline, this typical section serves as an approximation of the allocation of parking and driving lanes within the right-of-way. **Figure 4** provides an aerial view of Eastmoor Blvd and **Figure 5** shows a street-level view of the roadway.

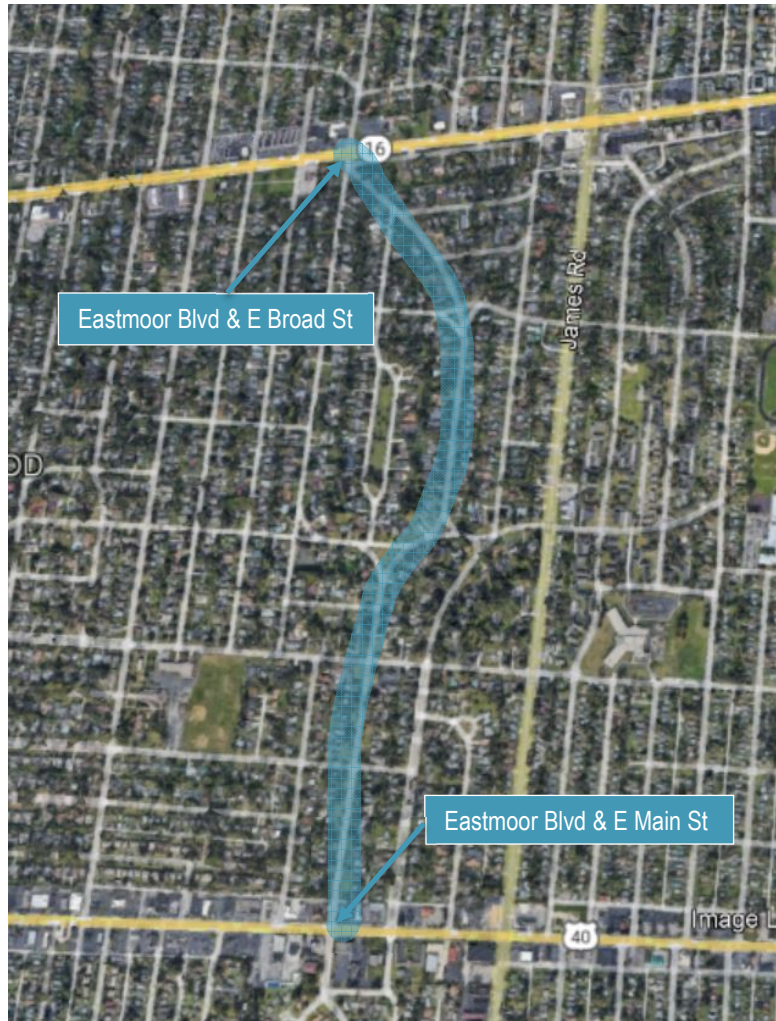


Figure 2. Map of Project Study Area

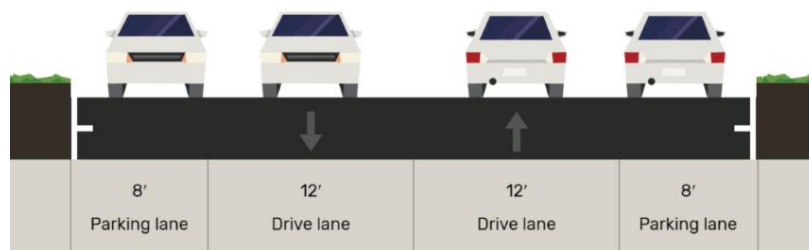


Figure 3. Typical Section of Eastmoor Blvd (made using Streetmix)



**Figure 4. Aerial View of Eastmoor Blvd (via Google Earth)**



**Figure 5. A Street-Level View of Eastmoor Blvd**

The posted speed limit along Eastmoor Blvd is 25 mph. Traffic count data was collected in recent years along the corridor. Counts indicate that northbound and southbound traffic are approximately similar, with total two-way AADT ranging between 1,000 and 2,000 vehicles along the corridor.

The intersections included in the project study area and the associated intersection controls are listed in **Table 1**. The endpoints of the project area, the intersections at Eastmoor Blvd and Broad St and E Main St and E Broad St, are controlled by traffic signals. Traffic circles exist at Eastmoor Blvd and Fair Ave and Eastmoor Blvd and Bexley Park Rd.

**Table 1. Eastmoor Blvd Intersections in Project Corridor**

Intersection	Intersection Control
E Broad St/S Harding Rd	Traffic Signal
Elbern Ave	None
Dale Ave	None
Fair Ave	Traffic Circle with Stop Sign
Bexley Park Rd	Traffic Circle
E Main St	Traffic Signal

Public places within a half mile of the study area include several churches and the Eastmoor South Swim Club. There are 11 schools within two miles of the study area, with the majority comprising elementary and middle schools.

## Non-motorized User Data

Dedicated pedestrian and bicycle infrastructure is limited in the project study area. There are no sidewalks on the majority of Eastmoor Blvd. A short segment of sidewalk exists on the west side of Eastmoor Blvd north of E Main St. Sidewalks are present on E Main St south of the study area and on E Broad St north of the study area. Type I marked crosswalks are present on all legs of the E Broad St and E Main St intersections. No priority routes for Safe Routes to School are present directly within the study area, however there are priority corridors and infrastructure recommendations nearby. Existing and proposed bicycle infrastructure is as follows:

- Existing sharrows on E Main St from S Gould Rd to Maplewood Rd
- Existing sharrows on E Broad St from N Gould Rd to Westland Ave
- Proposed sharrows on James Rd from E Main St to E Livingston Ave, turning to proposed bike lanes south of Livingston Ave
- Proposed sharrows on N James Rd from E Broad St to Ruhl Ave, turning to proposed shared use path or bike lanes north of Ruhl Ave

Two neighborhood traffic circles are present on Eastmoor Blvd at the intersections with Fair Ave and Bexley Park Rd. Relevant MTP 2050 projects include a multi-use path on E Broad St from Nelson Rd to Hamilton Rd and a High-Capacity Transit Line on E Rich St/E Main St from High St to Waggoner Ave.

Ridership figures consist of average daily ridership on weekdays for years 2019 and 2020. **Table 2** below summarizes the average daily ridership of bus stops that are nearest to the study area. Stops within a half mile of the study area were included. Within a half mile of Eastmoor Blvd, there are 41 bus stops for three routes.

**Table 2. Average Daily Ridership for Bus Stops Near Study Area**

Route	2020	2019
<b>2: E Main/N High (10 stops)</b>	539	656
<b>10: E Broad/W Broad (14 stops)</b>	558	787
<b>23: James-Stelzer (17 stops)</b>	781	1107

Routes 2 and 10 are some of the highest used bus routes in the regional system. Increasing access to these bus stops is beneficial for residents in the adjacent neighborhood.

## Bicycle, Pedestrian, and Traffic Calming Observations

The study team visited the Eastmoor corridor several times to get an understanding of existing conditions. The weather during observations ranged across a variety of conditions. Field visits took place at the following times:

- **Wednesday, August 18, 2021 midday:** Weather in mid-80's and dry.
- **Wednesday, December 1, 2021 afternoon/evening:** Weather in mid-40's and dry.
- **Saturday, December 11, 2021 midday:** Weather was very windy with intermittent rain and in the 50's.
- **Sunday, December 12, 2021 midday:** Weather in mid-40's, sunny, and dry.

A handful of pedestrians and bicyclists were observed traveling along the corridor on most days that were not raining. It appeared to observers that most people on foot were local residents engaged in recreational activity of walking dogs or jogging. On the one hand, the residential nature of the road and low volume of automobiles might be inviting to pedestrians and bicyclists. On the other hand, high vehicular speeds and lack of sidewalks could deter residents from walking, biking, or jogging along the road.

While driving and walking along the corridor, observers noted the ease with which speeding seems to occur. The wide, curving road is potentially somewhat easy to speed on, so to speak. A motorist who tries to follow the speed limit of 25 mph can quickly find that they are accidentally going 35 mph without any malicious intent. Motorists currently need to actively try to not speed. Observers noted that it would be beneficial to change this characteristic as the team considers potential future roadway improvements.

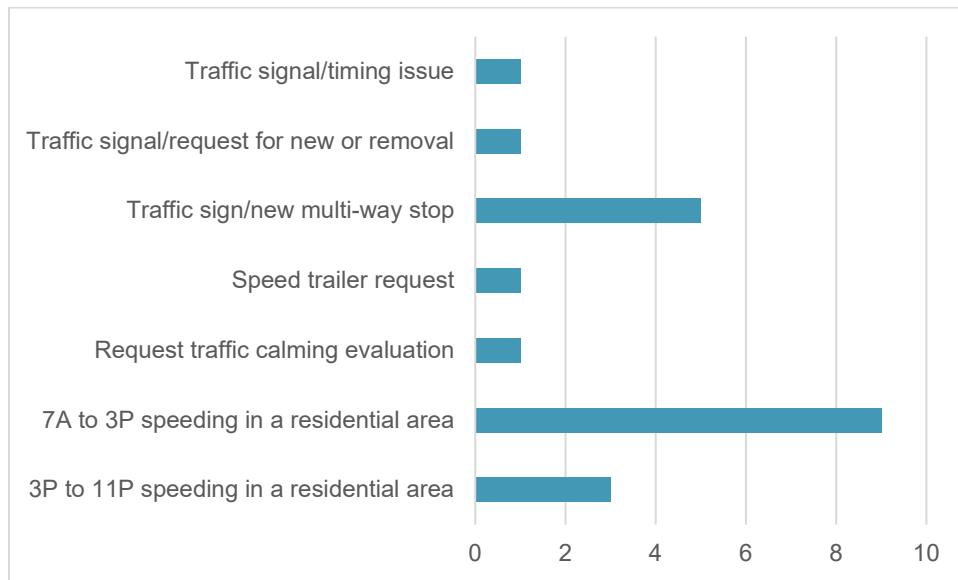
The study team observed that existing traffic calming is effective at slowing speeds at Eastmoor Blvd/Bexley Park Rd and Eastmoor Blvd/Fair Ave. One issue is that this effect is limited to the area adjacent to these intersections. After slowing down at these intersections, cars appear to quickly pick up speed again as they proceed to travel up the corridor. This may point to the

benefit of additional traffic calming throughout the corridor to provide repeated reminders to motorists to maintain speeds under the speed limit.

The study team noted that there is potential for future roadway improvements to reduce vehicular speeding and enhance the nonmotorized traveling environment.

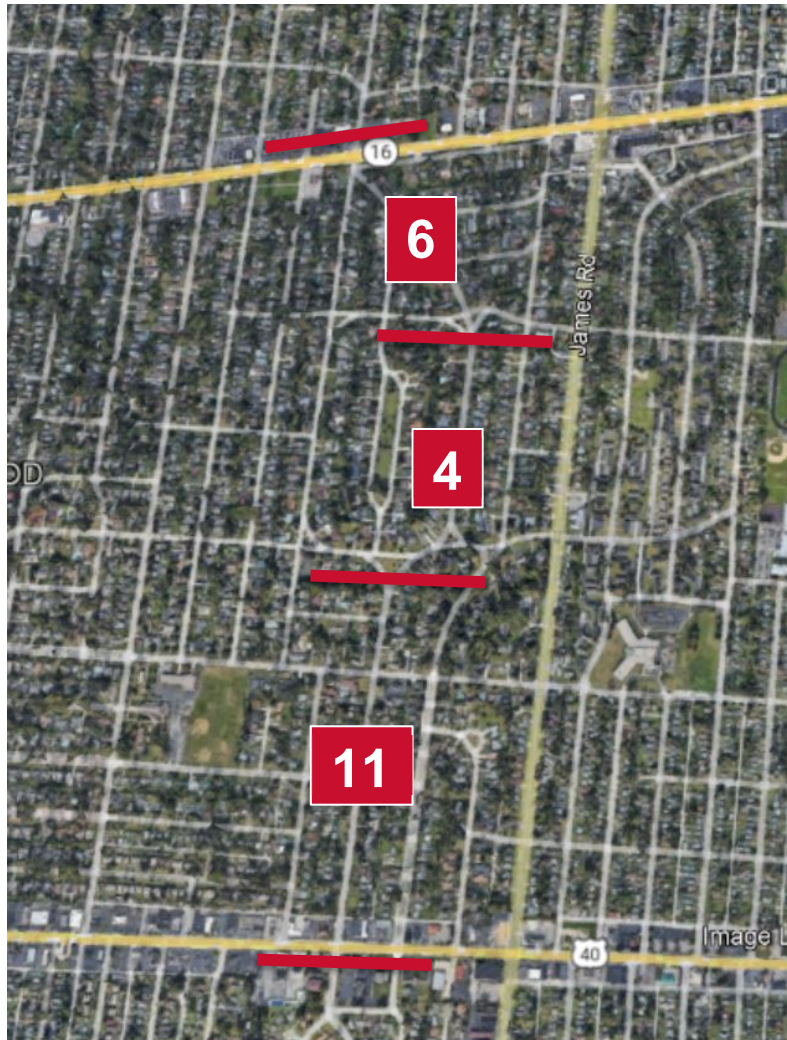
### 311 Service Requests

The City of Columbus provided the 311 service requests (SRs) specific to the project corridor that had been submitted between April 2017 and September 2021. Throughout this period of time, 21 311 SRs were submitted to the City for a variety of reasons. **Figure 6** shows the distribution of the count of the 311 SRs by type.



**Figure 6. Count of 311 Service Requests on Eastmoor Blvd by Type**

The most prevalent types of 311 SRs along the Eastmoor corridor were related to speeding in a residential area or an issue with a traffic sign or multi-way stop. The distribution of 311 SRs by location is shown in **Figure 7**.



**Figure 7. Location Distribution of 311 SRs on Eastmoor Blvd**

The highest concentration of 311 SRs was throughout the southern portion of the corridor, south of Dale Ave. Seven of these SRs were specifically for the Eastmoor Blvd and Fair Ave intersection, where there have been many complaints about the neighborhood traffic circle. All 10 311 SRs submitted for locations north of Dale Ave were related to speeding. The information included in the comments of the SR documentation for Eastmoor Blvd will be valuable to the project team as they move forward with developing solutions for the corridor.

## Speed Analysis

Speed data was collected along Eastmoor Blvd for a 72-hour period between Tuesday, November 16 and Thursday, November 18 at the following locations as illustrated in **Figure 8**:

1. Between Bexley Park Rd and E Main St (633 Eastmoor Blvd)
2. North of Dale Ave (280 Eastmoor Blvd)
3. Between Medway Ave and Elbern Ave (120 Eastmoor Blvd)

**Table 3** summarizes the speeds collected for each the northbound and southbound direction. The statistics summarized include the 85<sup>th</sup> percentile speed, the mean (average) speed, and the 10-mph pace and corresponding percentage of vehicles within the pace speed range. The pace speed is the range at which most vehicles are traveling within that segment. The raw speed data is provided in **Appendix A**.

Speeds at a fourth location, between Fair Ave and Bexley Park Rd, were collected by the City of Columbus and revealed an average speed of 31 mph. This data is in line with the data collected as part of this study. However, detailed information for this location was not provided; therefore, this location is not included in the discussions herein, but it can be assumed that the speeds at this location are similar to the locations collected as part of this study.



Figure 8. Speed Collection

Table 3. Speed Data Summary

Location	85 <sup>th</sup> Percentile Speed	Mean Speed	10 mph Pace Speed	Percent in Pace
<b><i>Between Bexley Park Rd and E Main St (633 Eastmoor Blvd)</i></b>				
Northbound	34 mph	30 mph	26 – 35 mph	69%
Southbound	34 mph	30 mph	26 – 35 mph	72%
<b><i>North of Dale Ave (280 Eastmoor Blvd)</i></b>				
Northbound	38 mph	33 mph	31 – 40 mph	62%
Southbound	41 mph	35 mph	31 – 40 mph	60%
<b><i>Between Medway Ave and Elbern Ave (120 Eastmoor Blvd)</i></b>				
Northbound	34 mph	30 mph	26 – 35 mph	70%
Southbound	37 mph	32 mph	26 – 35 mph	64%

In all three segments included in this study, the majority of vehicles are traveling faster than the posted 25 mph speed limit. The segment between Dale Ave and Elbern Ave is very straight and does not have any traffic control along Eastmoor Blvd which likely contributes to the faster speeds in this segment compared to the other segments.

Approximately 0.5 percent of traffic was traveling more than 50 mph (twice the posted speed limit) over the three-day period. **Figure 9** summarizes the hour of day that speeds of this magnitude or higher were reported.

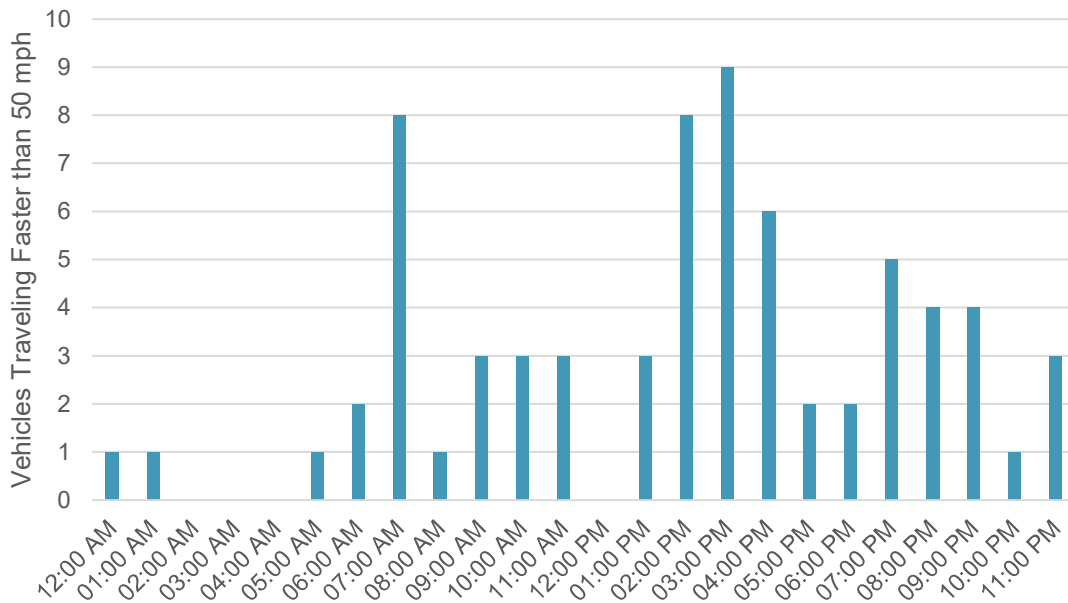


Figure 9. Vehicles Traveling Faster than 50 mph by Hour of Day

While there are a number of vehicles traveling faster than 50 mph during off peak times, such as the overnight period, there is a high frequency of vehicles traveling above 50 mph during daylight hours, including during the middle of the day when residents are likely to be outside and children are walking home from school or from the bus stops.

## Crash Analysis

Crash data for Eastmoor Blvd between E Main St and E Broad St were provided by the City of Columbus from January 1, 2016 to December 31, 2020. The original dataset included 38 crashes for this time period. After further review, it was determined that seven of these crashes occurred outside of the study area or on private property and were removed from the dataset. Furthermore, 17 of the 38 crashes occurred at the intersection with E Main St and seven of the 38 crashes occurred at the E Broad St intersection. In this five-year period, there were seven crashes that occurred on the Eastmoor Blvd corridor. A collision diagram illustrating the approximate location of each of these seven crashes is provided in **Appendix B**.

Three of the seven crashes involved parked vehicles along Eastmoor Blvd. None of these crashes resulted in injuries. One of these crashes involved a driver impaired by alcohol and another involved a driver over the age of 65 years old. The third parked vehicle crash occurred in the 4:00 AM hour under dark conditions.

Two crashes in the corridor were pedestrian collisions – one of which resulted in a minor injury and one of which resulted in a serious injury. Both of these crashes occurred during daylight hours under clear weather conditions and were at the E Main St intersection. In one crash, the pedestrian was intoxicated and was struck while crossing outside of the marked crosswalk on the east leg of the intersection. The pedestrian in the other crash was crossing the west leg of the E Main St intersection in the crosswalk during a Do Not Walk period and was struck by an eastbound vehicle on E Main St.

The remaining two crashes in the study area were angle crashes. Based on the OH-1 report, one occurred at the traffic circle at Bexley Park Rd when a vehicle was driving continuously around the traffic circle at a high rate of speed. This vehicle exited on the east leg of the intersection and struck an eastbound vehicle waiting to enter the traffic circle. No injuries were reported. This crash occurred just before 9:00 PM under clear and dry conditions. The second crash occurred at the intersection of Fair Ave with Eastmoor Blvd. A vehicle eastbound on Fair Ave lost control when turning right onto southbound Eastmoor Blvd and struck a northbound vehicle on Eastmoor Blvd at the stop sign. This crash occurred under snowy conditions and the OH-1 report cited that vehicle speed too fast for the weather conditions was a contributing factor.

## Parking Utilization

Parking counts along Eastmoor Blvd were collected in order to gain an understanding of the current utilization of the existing available curbside parking within the study area. There are a total of 246 potential parking spaces along 15 blocks of the Eastmoor Blvd project corridor.

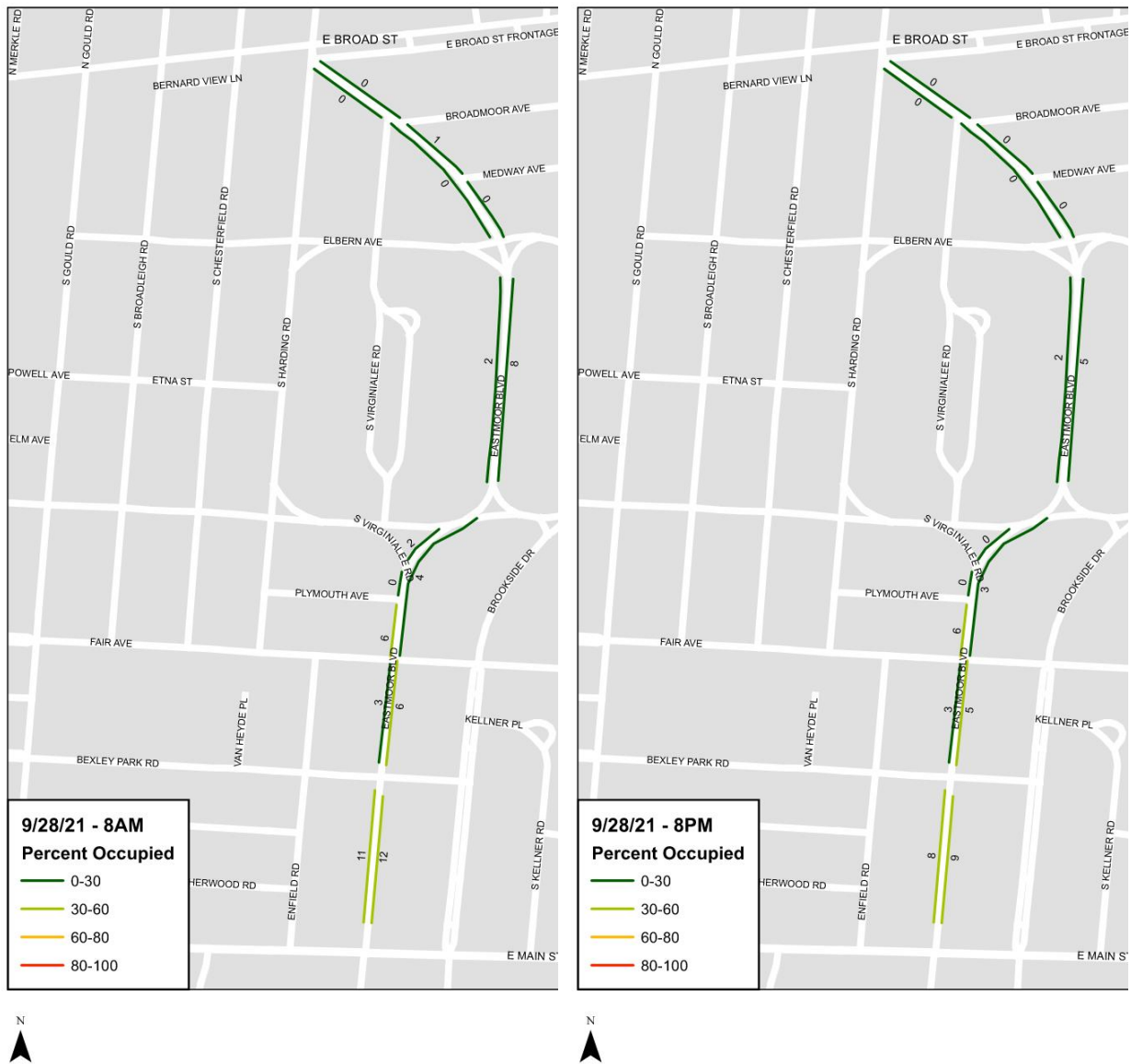
**Figure 10** shows the distribution of these existing parking spaces.



**Figure 10. Total Existing Available Parking Spaces by Block**

Parking count data was collected in the morning and evening hours on two separate weekdays, Tuesday, September 28, 2021, and Thursday, September 30, 2021. Raw data is included in **Appendix C**. A visual representation of the number of spaces occupied at the time of

observation, with each block color-coded to represent the percentage of the total potential parking spaces occupied for each segment, is shown in **Figure 11** for September 28 and **Figure 12** for September 30.



**Figure 11. Percent of Segments Occupied During Observation Period - Tuesday, September 28th, 2021 AM and PM**



Figure 12. Percent of Segments Occupied During Observation Period - Thursday, September 30th, 2021 AM and PM

**Table 4** shows the existing number of parking spaces in each block of the Eastmoor Blvd corridor as well as the number of cars parked along each block during each of the four observation periods.

**Table 4. Total Number of Existing Spaces and Observed Parking Counts by Block**

Existing Number of Spaces in Block	Parking Count During Observation Period			
	9/28/21 AM	9/28/21 PM	9/30/21 AM	9/30/21 PM
24	12	9	7	6
19	11	8	8	7
16	6	5	2	4
19	3	3	3	4
28	8	5	7	6
15	2	2	0	1
10	0	0	1	0
12	1	0	0	1
11	0	0	1	0
29	0	0	1	0
16	0	0	0	0
10	6	6	3	7
4	0	0	0	0
7	2	0	0	0
26	4	3	3	5

**Table 5** shows the counts of blocks that were found to be within the 0-30%, 30-60%, 60-80%, and 80-100% occupancy ranges. **Table 6** shows the total number of spaces occupied along the entire Eastmoor Blvd corridor during each observation period as well as the corresponding total occupancy percentage.

**Table 5. Summary of Parking Utilization Findings**

Observation Period	Count of Blocks within Range of Percent Occupied			
	0 30%	30 60%	60 80%	80 100%
9/28/21 8AM	11	4	0	0
9/28/21 8PM	11	4	0	0
9/30/21 9AM	14	1	0	0
9/30/21 8PM	13	2	0	0

**Table 6. Total Spaces Occupied and Total Occupancy Percentage by Observation Period**

Observation Period	Total Spaces Occupied	Total Occupancy Percentage
9/28/21 AM	55	22.4%
9/28/21 PM	41	16.7%
9/30/21 AM	36	14.6%
9/30/21 PM	41	16.7%

The majority of the study area was observed to be less than 30% occupied by parked vehicles in both the morning and evening observation periods. In fact, five to seven blocks of the roadway segment observed were found to have zero vehicles parked on the street throughout the data collection period. There was only one block that was consistently more than 30% occupied, which was the southbound side of Eastmoor Blvd between Bexley Park Rd and E Main St. The northern end of the corridor had the lowest concentration of on-street parking utilized.

The parking utilization assessment within the project study area revealed that the Eastmoor Blvd corridor does not use most of the curbside parking spaces that are currently available. The percentage of parking spaces occupied was low throughout the morning and evening periods on Tuesday and Thursday. The total occupancy percentage for the entire corridor ranged from 14.6% to 22.4%, showing that the overall parking utilization for the corridor is low.

## Existing Conditions Diagram

**Figure 13** shows the Existing Conditions Diagram, which provides an overview of the existing conditions of the Eastmoor Blvd corridor. All available data sources were compiled to develop a complete picture of corridor function and operation.



Figure 13. Existing Conditions Diagram

## Conclusion

This document provides an overview of the existing conditions of the project study area based on all of the data compiled. It was known that vehicle speeds were a major concern of area residents. The majority of 311 SRs from recent years focused on speeding and intersection configurations, specifically that of Eastmoor Blvd and Fair Ave. The speed data collected by the project team shows that speeding is indeed an issue along the Eastmoor Blvd corridor. The crash analysis showed that the majority of crashes within the past few years occurred at the E Main St and E Broad St intersections, however there is still a potential danger to roadway users and residents on the corridor, especially with the speeds seen during the speed data collection.

The utilization of the curbside parking space is low and indicates that there are opportunities to explore potential alternative uses for this existing right-of-way in the next phase of the project.

Existing pedestrian and bicycle infrastructure is limited. As this project moves forward, connections to nearby points of interest, such as schools, existing sidewalk and bicycle infrastructure, and bus stops on E Main St, E Broad St, and James Rd, should be considered. There is an opportunity to connect the existing sharrows on E Main St and E Broad St.

The next step of the project involves evaluating conceptual alternatives for the Eastmoor Blvd corridor. The project team will use the findings of this Existing Conditions Report to develop options that provide improvements to pedestrian, bicycle, and vehicular safety and increase multimodal options in the corridor.



# Appendix A

Raw Speed Data

# Burgess & Niple

5085 Reed Rd  
Columbus, OH 43220

Site Code:  
Eastmoor Road btwn Main and Bexley Park  
In Front of 633 Eastmoor Road  
Latitude: 0' 0.0000 Undefined  
Longitude: 0' 0.0000 Undefined

Southbound

Start Time	1	16	21	26	31	36	41	46	51	56	61	66	71	76	Total	Pace Speed	Number in Pace
	15	20	25	30	35	40	45	50	55	60	65	70	75	999			
11/16/21	0	0	1	2	0	0	0	0	0	0	0	0	0	0	3	20-29	3
01:00	0	1	1	1	1	1	0	0	0	0	0	0	0	0	5	31-40	2
02:00	0	0	0	0	0	0	0	0	0	0	0	0	0	0	0	*	*
03:00	0	0	0	0	0	0	0	0	0	0	0	0	0	0	0	*	*
04:00	0	0	0	1	0	0	0	0	0	0	0	0	0	0	1	19-28	1
05:00	0	0	1	0	0	0	1	0	0	0	0	0	0	0	2	14-23	1
06:00	0	0	3	7	6	3	0	0	0	0	0	0	0	0	19	26-35	13
07:00	0	2	<b>9</b>	<b>23</b>	18	0	0	<b>1</b>	<b>1</b>	0	0	0	0	0	54	26-35	41
08:00	0	1	3	21	17	8	0	0	0	0	0	0	0	0	50	26-35	38
09:00	0	1	5	20	<b>20</b>	2	1	0	0	0	0	0	0	0	49	26-35	40
10:00	<b>3</b>	1	5	15	16	5	<b>2</b>	0	0	0	0	0	0	0	47	26-35	31
11:00	0	<b>3</b>	7	22	16	<b>9</b>	0	0	0	0	0	0	0	0	<b>57</b>	26-35	38
12 PM	<b>6</b>	2	<b>12</b>	21	<b>37</b>	<b>11</b>	2	0	0	0	0	0	0	0	<b>91</b>	26-35	58
13:00	1	1	9	16	22	11	<b>3</b>	0	0	0	0	0	0	0	63	26-35	38
14:00	2	<b>6</b>	10	28	18	9	2	0	0	0	0	0	0	0	75	26-35	46
15:00	5	2	7	33	21	7	1	0	0	0	0	0	0	0	76	26-35	54
16:00	3	2	11	<b>38</b>	29	7	0	0	0	0	0	0	0	0	90	26-35	67
17:00	2	1	9	34	22	4	0	0	0	0	0	0	0	0	72	26-35	56
18:00	1	0	9	20	15	5	1	0	0	0	0	0	0	0	51	26-35	35
19:00	0	0	5	16	8	5	0	0	0	0	0	0	0	0	34	26-35	24
20:00	0	0	2	10	3	2	1	0	0	0	0	0	0	0	18	24-33	13
21:00	0	0	2	4	7	2	0	0	0	0	0	0	0	0	15	26-35	11
22:00	0	0	3	6	1	1	0	0	0	0	0	0	0	0	11	21-30	9
23:00	0	1	1	1	1	1	0	0	0	0	0	0	0	0	5	31-40	2
<b>Total</b>	<b>23</b>	<b>24</b>	<b>115</b>	<b>339</b>	<b>278</b>	<b>93</b>	<b>14</b>	<b>1</b>	<b>1</b>	<b>0</b>	<b>0</b>	<b>0</b>	<b>0</b>	<b>0</b>	<b>888</b>		
Percent	2.6%	2.7%	13.0%	38.2%	31.3%	10.5%	1.6%	0.1%	0.1%	0.0%	0.0%	0.0%	0.0%	0.0%			
AM Peak	10:00	11:00	07:00	07:00	09:00	11:00	10:00	07:00	07:00						11:00		
Vol.	3	3	9	23	20	9	2	1	1						57		
PM Peak	12:00	14:00	12:00	16:00	12:00	12:00	13:00								12:00		
Vol.	6	6	12	38	37	11	3								91		

# Burgess & Niple

5085 Reed Rd  
Columbus, OH 43220

Site Code:  
Eastmoor Road btwn Main and Bexley Park  
In Front of 633 Eastmoor Road  
Latitude: 0' 0.0000 Undefined  
Longitude: 0' 0.0000 Undefined

Southbound

Start Time	15	20	25	30	35	40	45	50	55	60	65	70	75	999	Total	Pace Speed	Number in Pace
11/17/21	1	0	0	0	1	0	0	0	0	0	0	0	0	0	2	*	1
01:00	0	0	0	0	1	1	0	0	0	0	0	0	0	0	2	29-38	2
02:00	0	0	0	0	0	0	0	0	0	0	0	0	0	0	0	*	*
03:00	0	0	1	0	0	0	0	0	0	0	0	0	0	0	1	14-23	1
04:00	0	0	0	0	1	0	0	0	0	0	0	0	0	0	1	24-33	1
05:00	0	0	1	2	1	1	0	0	0	0	0	0	0	0	5	26-35	3
06:00	0	0	4	6	7	3	0	0	0	0	0	0	0	0	20	26-35	13
07:00	<b>2</b>	<b>2</b>	<b>10</b>	<b>29</b>	14	4	<b>3</b>	0	0	0	0	0	0	0	<b>64</b>	26-35	43
08:00	0	0	5	15	<b>17</b>	8	2	0	0	0	0	0	0	0	47	26-35	32
09:00	0	0	9	16	10	4	2	0	0	0	0	0	0	0	41	24-33	26
10:00	2	2	9	12	15	4	0	0	0	0	0	0	0	0	44	26-35	27
11:00	2	1	9	14	14	<b>9</b>	2	0	0	0	0	0	0	0	51	26-35	28
12 PM	0	1	10	23	25	2	1	0	0	0	0	0	0	0	62	26-35	48
13:00	<b>5</b>	3	8	20	24	1	0	0	0	0	0	0	0	0	61	26-35	44
14:00	4	2	10	22	21	7	0	0	0	0	0	0	0	0	66	26-35	43
15:00	3	1	7	25	26	<b>8</b>	<b>5</b>	0	0	0	0	0	0	0	75	26-35	51
16:00	2	2	6	29	27	5	1	0	0	0	0	0	0	0	72	26-35	56
17:00	2	<b>5</b>	11	<b>33</b>	<b>34</b>	3	0	0	0	0	0	0	0	0	<b>88</b>	26-35	67
18:00	3	1	<b>12</b>	21	17	2	0	0	0	0	0	0	0	0	56	26-35	38
19:00	0	3	8	12	10	5	0	0	0	0	0	0	0	0	38	25-34	22
20:00	1	0	4	9	9	4	0	0	0	0	0	0	0	0	27	26-35	18
21:00	1	1	3	7	9	3	1	0	0	0	0	0	0	0	25	26-35	16
22:00	0	1	2	3	2	3	0	0	0	0	0	0	0	0	11	20-29	5
23:00	0	0	2	0	5	1	0	0	0	0	0	0	0	0	8	29-38	6
<b>Total</b>	<b>28</b>	<b>25</b>	<b>131</b>	<b>298</b>	<b>290</b>	<b>78</b>	<b>17</b>	<b>0</b>	<b>0</b>	<b>0</b>	<b>0</b>	<b>0</b>	<b>0</b>	<b>0</b>	<b>867</b>		
Percent	3.2%	2.9%	15.1%	34.4%	33.4%	9.0%	2.0%	0.0%	0.0%	0.0%	0.0%	0.0%	0.0%	0.0%			
AM Peak	07:00	07:00	07:00	07:00	08:00	11:00	07:00								07:00		
Vol.	2	2	10	29	17	9	3								64		
PM Peak	13:00	17:00	18:00	17:00	17:00	15:00	15:00								17:00		
Vol.	5	5	12	33	34	8	5								88		

**Burgess & Niple**  
5085 Reed Rd  
Columbus, OH 43220

Site Code:  
Eastmoor Road btwn Main and Bexley Park  
In Front of 633 Eastmoor Road  
Latitude: 0' 0.0000 Undefined  
Longitude: 0' 0.0000 Undefined

Southbound

Start Time	1 15	16 20	21 25	26 30	31 35	36 40	41 45	46 50	51 55	56 60	61 65	66 70	71 75	76 999	Total	Pace Speed	Number in Pace
11/18/21	0	0	1	0	1	0	0	0	0	0	0	0	0	0	2	14-23	1
01:00	0	0	0	1	1	0	0	0	0	0	0	0	0	0	2	24-33	2
02:00	0	0	0	0	1	0	0	0	0	0	0	0	0	0	1	24-33	1
03:00	0	0	0	2	1	0	0	0	0	0	0	0	0	0	3	24-33	3
04:00	0	0	0	0	0	0	0	0	0	0	0	0	0	0	0	*	*
05:00	0	0	0	1	1	1	0	0	0	0	0	0	0	0	3	24-33	2
06:00	0	0	3	4	7	0	1	0	0	0	0	0	0	0	15	26-35	11
07:00	0	0	7	21	14	2	0	0	0	0	0	0	0	0	44	26-35	35
08:00	0	1	9	20	16	5	2	0	0	0	0	0	0	0	53	26-35	36
09:00	2	0	7	28	10	8	0	0	0	0	0	0	0	0	55	26-35	38
10:00	2	0	7	21	22	7	2	0	0	0	0	0	0	0	61	26-35	43
11:00	1	1	4	10	17	6	1	0	0	0	0	0	0	0	40	26-35	27
12 PM	3	2	5	14	23	8	0	0	0	0	0	0	0	0	55	26-35	37
13:00	1	0	6	21	14	8	2	0	0	0	0	0	0	0	52	26-35	35
14:00	0	0	8	32	14	9	2	1	0	0	0	0	0	0	66	26-35	46
15:00	5	1	15	24	25	15	3	0	0	0	0	0	0	0	88	26-35	49
16:00	0	3	8	31	35	10	1	0	0	0	0	0	0	0	88	26-35	66
17:00	3	2	13	32	24	6	0	0	0	0	0	0	0	0	80	26-35	56
18:00	2	0	4	23	23	5	1	0	0	0	0	0	0	0	58	26-35	46
19:00	0	1	4	10	12	7	1	1	0	0	0	0	0	0	36	26-35	22
20:00	0	0	4	9	7	3	0	0	0	0	0	0	0	0	23	26-35	16
21:00	1	0	1	4	6	7	3	0	0	0	0	0	0	0	22	31-40	13
22:00	3	1	1	2	5	3	0	0	0	0	0	0	0	0	15	29-38	8
23:00	0	0	2	0	0	0	0	0	0	0	0	0	0	0	2	15-24	2
<b>Total</b>	<b>23</b>	<b>12</b>	<b>109</b>	<b>310</b>	<b>279</b>	<b>110</b>	<b>19</b>	<b>2</b>	<b>0</b>	<b>0</b>	<b>0</b>	<b>0</b>	<b>0</b>	<b>0</b>	<b>864</b>		
Percent	2.7%	1.4%	12.6%	35.9%	32.3%	12.7%	2.2%	0.2%	0.0%	0.0%	0.0%	0.0%	0.0%	0.0%			
AM Peak	09:00	08:00	08:00	09:00	10:00	09:00	08:00								10:00		
Vol.	2	1	9	28	22	8	2								61		
PM Peak	15:00	16:00	15:00	14:00	16:00	15:00	15:00	14:00							15:00		
Vol.	5	3	15	32	35	15	3	1							88		
<b>Total</b>	<b>74</b>	<b>61</b>	<b>355</b>	<b>947</b>	<b>847</b>	<b>281</b>	<b>50</b>	<b>3</b>	<b>1</b>	<b>0</b>	<b>0</b>	<b>0</b>	<b>0</b>	<b>0</b>	<b>2619</b>		
Percent	2.8%	2.3%	13.6%	36.2%	32.3%	10.7%	1.9%	0.1%	0.0%	0.0%	0.0%	0.0%	0.0%	0.0%			

15th Percentile : 23 MPH  
50th Percentile : 29 MPH  
85th Percentile : 34 MPH  
95th Percentile : 38 MPH

Stats  
10 MPH Pace Speed : 26-35 MPH  
Number in Pace : 1794  
Percent in Pace : 68.5%  
Number of Vehicles > 55 MPH : 0  
Percent of Vehicles > 55 MPH : 0.0%  
Mean Speed(Average) : 30 MPH

# Burgess & Niple

5085 Reed Rd  
Columbus, OH 43220

Site Code:  
Eastmoor Road btwn Main and Bexley Park  
In Front of 633 Eastmoor Roaf  
Latitude: 0' 0.0000 Undefined  
Longitude: 0' 0.0000 Undefined

Northbound

Start Time	15	20	25	30	35	40	45	50	55	60	65	70	75	999	Total	Pace Speed	Number in Pace
11/16/21	0	0	0	1	2	0	0	0	0	0	0	0	0	0	3	25-34	3
01:00	0	0	0	1	1	0	0	0	0	0	0	0	0	0	1	24-33	1
02:00	0	0	0	1	0	1	0	0	0	0	0	0	0	0	2	19-28	1
03:00	0	0	0	0	0	0	0	0	0	0	0	0	0	0	0	*	*
04:00	0	0	0	0	1	1	0	0	0	0	0	0	0	0	2	29-38	2
05:00	0	0	2	3	1	1	0	0	0	0	0	0	0	0	7	21-30	5
06:00	0	1	0	5	9	0	0	0	0	1	0	0	0	0	16	26-35	14
07:00	0	0	3	14	16	8	2	0	0	0	0	0	0	0	43	26-35	30
08:00	3	1	6	12	30	11	0	0	0	0	0	0	0	0	63	26-35	42
09:00	0	0	4	21	22	2	0	0	0	0	0	0	0	0	49	26-35	43
10:00	2	4	13	18	19	1	1	0	0	0	0	0	0	0	58	26-35	37
11:00	3	2	9	20	22	6	0	0	0	0	0	0	0	0	62	26-35	42
12 PM	7	2	7	19	40	7	1	1	0	0	0	0	0	0	84	26-35	59
13:00	2	2	1	14	25	8	0	0	1	0	0	0	0	0	53	26-35	39
14:00	1	2	4	31	25	12	1	1	0	0	0	0	0	0	77	26-35	56
15:00	2	0	8	19	40	8	2	2	0	0	0	0	0	0	81	26-35	59
16:00	0	0	5	22	37	13	3	0	0	0	0	0	0	0	80	26-35	59
17:00	3	1	7	33	37	14	2	0	0	0	0	0	0	0	97	26-35	70
18:00	1	0	8	17	20	5	1	0	0	0	0	0	0	0	52	26-35	37
19:00	0	1	3	14	11	3	1	0	0	0	0	0	0	0	33	26-35	25
20:00	1	1	3	12	12	3	1	0	0	0	0	0	0	0	33	26-35	24
21:00	0	2	0	7	3	0	0	0	0	0	0	0	0	0	12	26-35	10
22:00	0	0	0	2	3	2	0	0	0	0	0	0	0	0	7	31-40	5
23:00	0	0	1	3	4	0	0	0	0	0	0	0	0	0	8	26-35	7
<b>Total</b>	<b>25</b>	<b>19</b>	<b>84</b>	<b>288</b>	<b>380</b>	<b>106</b>	<b>15</b>	<b>4</b>	<b>1</b>	<b>1</b>	<b>0</b>	<b>0</b>	<b>0</b>	<b>0</b>	<b>923</b>		
Percent	2.7%	2.1%	9.1%	31.2%	41.2%	11.5%	1.6%	0.4%	0.1%	0.1%	0.0%	0.0%	0.0%	0.0%			
AM Peak	08:00	10:00	10:00	09:00	08:00	08:00	07:00			06:00					08:00		
Vol.	3	4	13	21	30	11	2			1					63		
PM Peak	12:00	12:00	15:00	17:00	12:00	17:00	16:00	15:00	13:00						17:00		
Vol.	7	2	8	33	40	14	3	2	1						97		

# Burgess & Niple

5085 Reed Rd  
Columbus, OH 43220

Site Code:  
Eastmoor Road btwn Main and Bexley Park  
In Front of 633 Eastmoor Road  
Latitude: 0' 0.0000 Undefined  
Longitude: 0' 0.0000 Undefined

Northbound

Start Time	15	20	25	30	35	40	45	50	55	60	65	70	75	999	Total	Pace Speed	Number in Pace
11/17/21	0	0	3	2	1	1	0	0	0	0	0	0	0	0	7	21-30	5
01:00	0	0	0	0	1	1	0	0	0	0	0	0	0	0	2	29-38	2
02:00	0	0	1	0	0	1	0	0	0	0	0	0	0	0	2	14-23	1
03:00	0	0	0	0	0	0	0	0	0	0	0	0	0	0	0	*	*
04:00	0	0	0	0	1	1	0	0	0	0	0	0	0	0	2	29-38	2
05:00	0	0	1	0	0	1	0	0	0	0	0	0	0	0	2	14-23	1
06:00	1	0	2	7	8	7	0	0	0	0	0	0	0	0	25	27-36	15
07:00	1	0	4	16	<b>35</b>	7	<b>5</b>	0	0	0	0	0	0	0	<b>68</b>	26-35	51
08:00	1	0	9	<b>23</b>	21	5	1	<b>1</b>	0	0	0	0	0	0	61	26-35	44
09:00	1	0	7	17	19	6	2	1	0	0	0	0	0	0	53	26-35	36
10:00	0	<b>1</b>	<b>12</b>	15	18	6	1	0	0	0	0	0	0	0	53	26-35	33
11:00	<b>2</b>	1	4	21	22	<b>11</b>	2	0	0	0	0	0	0	0	63	26-35	43
12 PM	0	1	6	<b>32</b>	23	13	0	<b>1</b>	0	0	0	0	0	0	76	26-35	55
13:00	2	1	6	26	14	<b>16</b>	1	0	0	0	0	0	0	0	66	26-35	40
14:00	4	<b>4</b>	4	31	21	6	2	0	0	0	0	0	0	0	72	26-35	52
15:00	3	1	4	26	29	7	<b>4</b>	0	0	0	0	0	0	0	74	26-35	55
16:00	1	0	<b>8</b>	28	<b>45</b>	11	1	0	0	0	0	0	0	0	<b>94</b>	26-35	73
17:00	<b>5</b>	1	6	23	33	11	0	0	0	0	0	0	0	0	79	26-35	56
18:00	0	1	6	28	26	8	0	1	0	0	0	0	0	0	70	26-35	54
19:00	0	2	6	11	19	1	0	0	0	0	0	0	0	0	39	26-35	30
20:00	0	0	3	10	10	6	1	0	0	0	0	0	0	0	30	26-35	20
21:00	2	0	1	3	10	1	0	0	0	0	0	0	0	0	17	26-35	13
22:00	0	0	2	1	1	1	0	0	0	0	0	0	0	0	5	21-30	3
23:00	0	0	1	1	5	0	0	0	<b>1</b>	0	0	0	0	0	8	26-35	6
<b>Total</b>	<b>23</b>	<b>13</b>	<b>96</b>	<b>321</b>	<b>362</b>	<b>128</b>	<b>20</b>	<b>4</b>	<b>1</b>	<b>0</b>	<b>0</b>	<b>0</b>	<b>0</b>	<b>0</b>	<b>968</b>		
<b>Percent</b>	<b>2.4%</b>	<b>1.3%</b>	<b>9.9%</b>	<b>33.2%</b>	<b>37.4%</b>	<b>13.2%</b>	<b>2.1%</b>	<b>0.4%</b>	<b>0.1%</b>	<b>0.0%</b>	<b>0.0%</b>	<b>0.0%</b>	<b>0.0%</b>	<b>0.0%</b>			
<b>AM Peak</b>	<b>11:00</b>	<b>10:00</b>	<b>10:00</b>	<b>08:00</b>	<b>07:00</b>	<b>11:00</b>	<b>07:00</b>	<b>08:00</b>							<b>07:00</b>		
<b>Vol.</b>	<b>2</b>	<b>1</b>	<b>12</b>	<b>23</b>	<b>35</b>	<b>11</b>	<b>5</b>	<b>1</b>							<b>68</b>		
<b>PM Peak</b>	<b>17:00</b>	<b>14:00</b>	<b>16:00</b>	<b>12:00</b>	<b>16:00</b>	<b>13:00</b>	<b>15:00</b>	<b>12:00</b>	<b>23:00</b>						<b>16:00</b>		
<b>Vol.</b>	<b>5</b>	<b>4</b>	<b>8</b>	<b>32</b>	<b>45</b>	<b>16</b>	<b>4</b>	<b>1</b>	<b>1</b>						<b>94</b>		

**Burgess & Niple**  
5085 Reed Rd  
Columbus, OH 43220

Site Code:  
Eastmoor Road btwn Main and Bexley Park  
In Front of 633 Eastmoor Road  
Latitude: 0' 0.0000 Undefined  
Longitude: 0' 0.0000 Undefined

Northbound

Start Time	1	16	21	26	31	36	41	46	51	56	61	66	71	76	Total	Pace Speed	Number in Pace
	15	20	25	30	35	40	45	50	55	60	65	70	75	999			
11/18/21	0	0	0	2	4	0	0	0	0	0	0	0	0	0	6	26-35	6
01:00	0	1	0	2	0	0	0	0	0	0	0	0	0	0	3	19-28	2
02:00	0	0	0	0	0	0	0	0	0	0	0	0	0	0	0	*	*
03:00	0	0	1	0	0	0	0	0	0	0	0	0	0	0	1	14-23	1
04:00	0	0	0	0	1	1	0	0	0	0	0	0	0	0	2	29-38	2
05:00	0	0	0	2	3	1	0	0	0	0	0	0	0	0	6	26-35	5
06:00	0	0	4	11	7	0	1	0	0	0	0	0	0	0	23	26-35	18
07:00	0	0	4	19	19	11	1	0	0	0	0	0	0	0	54	26-35	38
08:00	0	0	4	21	22	4	0	0	0	0	0	0	0	0	51	26-35	43
09:00	0	0	6	23	14	8	1	0	0	0	0	0	0	0	52	26-35	37
10:00	2	1	10	26	23	6	0	0	0	0	0	0	0	0	68	26-35	49
11:00	1	2	6	18	23	3	0	0	0	0	0	0	0	0	53	26-35	41
12 PM	3	1	4	24	26	8	1	0	0	0	0	0	0	0	67	26-35	50
13:00	1	2	3	19	20	9	1	0	0	0	0	0	0	0	55	26-35	39
14:00	1	2	7	28	41	10	1	0	0	0	0	0	0	0	90	26-35	69
15:00	3	1	11	14	34	17	3	1	0	0	0	0	0	0	84	31-40	51
16:00	1	2	13	33	34	7	1	0	0	0	0	0	0	0	91	26-35	67
17:00	1	1	7	29	37	7	0	0	0	0	0	0	0	0	82	26-35	66
18:00	0	1	5	20	20	5	0	0	0	0	0	0	0	0	51	26-35	40
19:00	1	1	10	7	12	5	1	0	0	0	0	0	0	0	37	25-34	19
20:00	0	1	1	4	8	0	0	0	0	0	0	0	0	0	14	26-35	12
21:00	0	0	3	3	8	1	0	0	0	0	0	0	0	0	15	26-35	11
22:00	2	0	2	5	14	1	0	0	0	0	0	0	0	0	24	26-35	19
23:00	1	0	1	3	4	0	0	0	0	0	0	0	0	0	9	26-35	7
<b>Total</b>	17	16	102	313	374	104	11	1	0	0	0	0	0	0	938		
Percent	1.8%	1.7%	10.9%	33.4%	39.9%	11.1%	1.2%	0.1%	0.0%	0.0%	0.0%	0.0%	0.0%	0.0%			
AM Peak	10:00	11:00	10:00	10:00	10:00	07:00	06:00								10:00		
Vol.	2	2	10	26	23	11	1								68		
PM Peak	12:00	13:00	16:00	16:00	14:00	15:00	15:00	15:00							16:00		
Vol.	3	2	13	33	41	17	3	1							91		
<b>Total</b>	65	48	282	922	1116	338	46	9	2	1	0	0	0	0	2829		
Percent	2.3%	1.7%	10.0%	32.6%	39.4%	11.9%	1.6%	0.3%	0.1%	0.0%	0.0%	0.0%	0.0%	0.0%			

15th Percentile : 25 MPH  
50th Percentile : 30 MPH  
85th Percentile : 34 MPH  
95th Percentile : 38 MPH

Stats  
10 MPH Pace Speed : 26-35 MPH  
Number in Pace : 2038  
Percent in Pace : 72.0%  
Number of Vehicles > 55 MPH : 1  
Percent of Vehicles > 55 MPH : 0.0%  
Mean Speed(Average) : 30 MPH

# Burgess & Niple

5085 Reed Rd  
Columbus, OH 43220

Site Code:  
Eastmoor Road btwn Elbern and Dale  
In Front of 280 Eastmoor Road  
Latitude: 0' 0.0000 Undefined  
Longitude: 0' 0.0000 Undefined

Southbound

Start Time	15	20	25	30	35	40	45	50	55	60	65	70	75	999	Total	Pace Speed	Number in Pace
11/16/21	0	0	0	0	2	0	0	0	0	0	0	0	0	0	2	25-34	2
01:00	0	0	0	0	2	0	1	0	1	0	0	0	0	0	4	25-34	2
02:00	0	0	0	0	0	1	0	0	0	0	0	0	0	0	1	29-38	1
03:00	0	0	0	0	0	0	0	0	0	0	0	0	0	0	0	*	*
04:00	0	0	0	0	0	1	0	0	0	0	0	0	0	0	1	29-38	1
05:00	0	0	0	0	0	0	0	1	0	0	0	0	0	0	1	39-48	1
06:00	0	0	1	2	1	5	6	2	0	0	0	0	0	0	17	36-45	11
07:00	1	0	3	4	14	5	6	1	0	1	0	0	0	0	35	29-38	19
08:00	2	1	3	7	6	6	4	2	0	0	0	0	0	0	31	26-35	13
09:00	1	0	2	6	13	8	5	0	0	0	0	0	0	0	35	30-39	21
10:00	2	2	1	4	10	9	6	0	1	0	0	0	0	0	35	31-40	19
11:00	3	0	0	5	13	10	5	2	1	0	1	0	0	0	40	31-40	23
12 PM	1	2	2	4	21	26	8	4	0	0	0	0	0	0	68	31-40	47
13:00	1	2	2	4	16	15	6	2	2	0	0	0	0	0	50	31-40	31
14:00	2	0	0	11	16	20	7	2	2	0	0	0	0	0	60	31-40	36
15:00	8	1	2	3	23	22	6	2	1	1	0	0	0	0	69	31-40	45
16:00	2	1	2	14	29	25	9	0	2	0	0	0	0	0	84	31-40	54
17:00	1	1	1	16	22	11	10	3	0	0	0	0	0	0	65	26-35	38
18:00	0	0	0	9	20	20	4	2	0	0	0	0	0	0	55	31-40	40
19:00	0	0	1	4	6	6	6	2	1	0	0	0	0	0	26	30-39	12
20:00	1	0	2	1	10	7	5	0	0	0	0	0	0	0	26	31-40	17
21:00	0	0	0	3	7	4	5	0	0	0	0	0	0	0	19	31-40	11
22:00	0	0	1	1	3	4	0	2	0	0	0	0	0	0	11	31-40	7
23:00	0	0	0	1	0	0	2	1	0	0	0	0	0	0	4	39-48	3
<b>Total</b>	<b>25</b>	<b>10</b>	<b>23</b>	<b>99</b>	<b>234</b>	<b>205</b>	<b>101</b>	<b>28</b>	<b>11</b>	<b>2</b>	<b>1</b>	<b>0</b>	<b>0</b>	<b>0</b>	<b>739</b>		
Percent	3.4%	1.4%	3.1%	13.4%	31.7%	27.7%	13.7%	3.8%	1.5%	0.3%	0.1%	0.0%	0.0%	0.0%			
AM Peak	11:00	10:00	07:00	08:00	07:00	11:00	06:00	06:00	01:00	07:00	11:00				11:00		
Vol.	3	2	3	7	14	10	6	2	1	1	1				40		
PM Peak	15:00	12:00	12:00	17:00	16:00	12:00	17:00	12:00	13:00	15:00					16:00		
Vol.	8	2	2	16	29	26	10	4	2	1					84		

**Burgess & Niple**  
5085 Reed Rd  
Columbus, OH 43220

Site Code:  
Eastmoor Road btwn Elbern and Dale  
In Front of 280 Eastmoor Road  
Latitude: 0' 0.0000 Undefined  
Longitude: 0' 0.0000 Undefined

Southbound

Start Time	1 15	16 20	21 25	26 30	31 35	36 40	41 45	46 50	51 55	56 60	61 65	66 70	71 75	76 999	Total	Pace Speed	Number in Pace
11/17/21	0	0	0	1	0	1	1	0	0	0	0	0	0	0	3	34-43	2
01:00	0	0	0	0	0	0	0	2	0	0	0	0	0	0	2	40-49	2
02:00	0	0	0	0	0	0	0	0	0	0	0	0	0	0	0	*	*
03:00	0	0	0	0	1	0	1	0	0	0	0	0	0	0	2	24-33	1
04:00	0	0	0	0	0	1	0	0	0	0	0	0	0	0	1	29-38	1
05:00	0	0	1	0	0	0	0	0	0	0	1	0	0	0	2	14-23	1
06:00	0	0	1	1	4	4	2	0	0	0	0	0	0	0	12	31-40	8
07:00	0	2	1	4	12	10	4	2	2	0	0	0	0	0	37	31-40	22
08:00	0	2	0	2	18	9	3	4	0	0	0	0	0	0	38	31-40	27
09:00	0	2	2	11	8	5	2	1	2	0	0	0	0	0	33	26-35	19
10:00	1	1	1	8	13	12	3	0	2	0	0	0	0	0	41	31-40	25
11:00	0	0	2	7	11	9	6	3	0	0	0	0	0	0	38	31-40	20
12 PM	1	0	3	16	13	14	6	2	0	0	0	0	0	0	55	26-35	29
13:00	0	2	2	12	12	15	4	2	0	0	0	0	0	0	49	31-40	27
14:00	0	1	3	6	23	15	8	2	0	0	0	0	0	0	58	31-40	38
15:00	0	0	1	11	17	18	7	2	1	0	0	0	0	0	57	31-40	35
16:00	0	1	3	16	24	15	13	4	1	0	1	0	0	0	78	26-35	40
17:00	0	0	2	15	25	20	7	0	1	0	0	0	0	0	70	31-40	45
18:00	2	2	1	9	19	27	3	1	0	0	0	0	0	0	64	31-40	46
19:00	1	1	3	7	17	6	3	0	0	0	0	0	0	0	38	26-35	24
20:00	1	1	2	3	12	10	2	0	0	0	0	0	0	0	31	31-40	22
21:00	0	1	0	5	4	6	4	0	0	0	0	0	0	0	20	36-45	10
22:00	0	0	0	0	6	2	3	3	1	0	0	0	0	0	15	30-39	8
23:00	0	0	0	0	3	0	1	0	0	0	0	0	0	0	4	26-35	3
<b>Total</b>	6	16	28	134	242	199	83	28	10	0	2	0	0	0	748		
<b>Percent</b>	0.8%	2.1%	3.7%	17.9%	32.4%	26.6%	11.1%	3.7%	1.3%	0.0%	0.3%	0.0%	0.0%	0.0%			
<b>AM Peak</b>	10:00	07:00	09:00	09:00	08:00	10:00	11:00	08:00	07:00		05:00				10:00		
<b>Vol.</b>	1	2	2	11	18	12	6	4	2		1				41		
<b>PM Peak</b>	18:00	13:00	12:00	12:00	17:00	18:00	16:00	16:00	15:00		16:00				16:00		
<b>Vol.</b>	2	2	3	16	25	27	13	4	1		1				78		

# Burgess & Niple

5085 Reed Rd  
Columbus, OH 43220

Site Code:  
Eastmoor Road btwn Elbern and Dale  
In Front of 280 Eastmoor Road  
Latitude: 0' 0.0000 Undefined  
Longitude: 0' 0.0000 Undefined

Southbound

Start Time	1 15	16 20	21 25	26 30	31 35	36 40	41 45	46 50	51 55	56 60	61 65	66 70	71 75	76 999	Total	Pace Speed	Number in Pace
11/18/21	0	0	1	0	1	2	0	0	0	0	0	0	0	0	4	30-39	3
01:00	0	0	0	0	0	0	0	0	0	0	0	0	0	0	0	*	*
02:00	0	0	0	1	1	1	0	0	0	0	0	0	0	0	3	24-33	2
03:00	0	0	0	0	2	1	0	0	0	0	0	0	0	0	3	29-38	3
04:00	0	0	0	0	0	0	0	0	0	0	0	0	0	0	0	*	*
05:00	0	0	0	1	1	1	0	0	0	0	0	0	0	0	3	24-33	2
06:00	0	1	1	1	3	1	1	1	0	0	0	0	0	0	9	31-40	4
07:00	0	0	1	6	16	10	3	0	1	0	0	0	0	0	37	31-40	26
08:00	2	1	2	5	10	8	5	1	1	0	0	0	0	0	35	31-40	18
09:00	0	0	3	7	13	9	3	0	1	0	0	0	0	0	36	30-39	22
10:00	0	0	1	2	13	16	2	1	0	0	0	0	0	0	35	31-40	29
11:00	2	0	5	7	9	14	6	1	0	0	0	0	0	0	44	31-40	23
12 PM	0	0	2	5	19	13	5	1	0	0	0	0	0	0	45	31-40	32
13:00	2	1	2	7	18	8	10	1	0	0	0	0	0	0	49	31-40	26
14:00	2	2	1	6	7	13	10	2	2	0	1	0	0	0	46	36-45	23
15:00	1	1	3	11	21	24	6	6	5	0	0	0	0	0	78	31-40	45
16:00	2	2	3	4	32	25	11	1	0	1	0	0	0	0	81	31-40	57
17:00	2	1	1	13	28	11	10	2	1	0	0	0	0	0	69	26-35	41
18:00	1	2	1	3	15	18	10	1	0	0	0	0	0	0	51	31-40	33
19:00	0	1	1	4	14	13	3	2	1	1	0	0	0	0	40	31-40	27
20:00	0	1	1	1	11	7	1	0	2	0	0	0	0	0	24	31-40	18
21:00	0	0	1	1	4	6	3	2	2	1	0	0	0	0	20	31-40	10
22:00	0	0	0	1	3	1	4	3	0	0	0	0	0	0	12	40-49	7
23:00	0	0	1	1	0	3	1	0	0	0	0	0	0	0	6	36-45	4
<b>Total</b>	14	13	31	87	241	205	94	25	16	3	1	0	0	0	730		
<b>Percent</b>	1.9%	1.8%	4.2%	11.9%	33.0%	28.1%	12.9%	3.4%	2.2%	0.4%	0.1%	0.0%	0.0%	0.0%			
<b>AM Peak</b>	08:00	06:00	11:00	09:00	07:00	10:00	11:00	06:00	07:00						11:00		
<b>Vol.</b>	2	1	5	7	16	16	6	1	1						44		
<b>PM Peak</b>	13:00	14:00	15:00	17:00	16:00	16:00	16:00	15:00	15:00	16:00	14:00				16:00		
<b>Vol.</b>	2	2	3	13	32	25	11	6	5	1	1				81		
<b>Total</b>	45	39	82	320	717	609	278	81	37	5	4	0	0	0	2217		
<b>Percent</b>	2.0%	1.8%	3.7%	14.4%	32.3%	27.5%	12.5%	3.7%	1.7%	0.2%	0.2%	0.0%	0.0%	0.0%			

15th Percentile : 27 MPH  
50th Percentile : 34 MPH  
85th Percentile : 41 MPH  
95th Percentile : 45 MPH

Stats  
10 MPH Pace Speed : 31-40 MPH  
Number in Pace : 1326  
Percent in Pace : 59.8%  
Number of Vehicles > 55 MPH : 9  
Percent of Vehicles > 55 MPH : 0.4%  
Mean Speed(Average) : 35 MPH

# Burgess & Niple

5085 Reed Rd  
Columbus, OH 43220

Site Code:  
Eastmoor Road btwn Elbern and Dale  
In Front of 280 Eastmoor Road  
Latitude: 0' 0.0000 Undefined  
Longitude: 0' 0.0000 Undefined

Northbound

Start Time	15	20	25	30	35	40	45	50	55	60	65	70	75	999	Total	Pace Speed	Number in Pace
11/16/21	0	0	0	0	1	0	0	0	0	0	0	0	0	0	1	24-33	1
01:00	0	0	0	0	0	0	0	0	0	0	0	0	0	0	0	*	*
02:00	0	0	0	0	1	1	0	0	0	0	0	0	0	0	2	29-38	2
03:00	0	0	0	0	0	1	0	0	0	0	0	0	0	0	1	29-38	1
04:00	0	0	0	0	1	1	0	0	0	0	0	0	0	0	2	29-38	2
05:00	0	0	2	2	4	3	2	0	0	0	0	0	0	0	13	29-38	7
06:00	0	1	3	1	6	4	0	0	0	0	0	0	0	0	15	31-40	10
07:00	1	1	3	8	16	14	0	4	0	0	0	0	0	0	47	31-40	30
08:00	0	3	2	15	21	15	5	1	0	0	0	0	0	0	62	26-35	36
09:00	0	0	4	10	11	12	4	1	0	0	0	0	0	0	42	30-39	23
10:00	0	0	1	9	19	18	4	1	0	0	0	0	0	0	52	31-40	37
11:00	3	1	2	17	16	18	5	1	0	0	0	0	0	0	63	29-38	34
12 PM	6	1	0	12	25	12	7	1	0	0	0	0	0	0	64	26-35	37
13:00	1	1	0	11	20	8	1	1	0	0	0	0	0	0	43	26-35	31
14:00	2	0	2	14	24	16	5	0	1	0	0	0	0	0	64	31-40	40
15:00	9	0	0	9	28	14	2	1	0	0	0	0	0	0	63	31-40	42
16:00	0	3	2	16	24	22	7	0	0	0	0	0	0	0	74	31-40	46
17:00	1	1	2	16	27	13	5	0	0	0	0	0	0	0	65	26-35	43
18:00	0	0	2	4	20	6	4	2	0	0	0	0	0	0	38	30-39	26
19:00	0	1	3	5	9	3	1	0	0	0	0	0	0	0	22	26-35	14
20:00	1	0	1	5	8	6	2	0	0	0	0	0	0	0	23	29-38	14
21:00	0	0	0	3	4	0	2	0	0	0	0	0	0	0	9	26-35	7
22:00	0	0	0	2	0	1	0	0	0	0	0	0	0	0	3	20-29	2
23:00	0	0	0	0	3	0	0	0	0	0	0	0	0	0	3	26-35	3
<b>Total</b>	<b>24</b>	<b>13</b>	<b>29</b>	<b>159</b>	<b>288</b>	<b>188</b>	<b>56</b>	<b>13</b>	<b>1</b>	<b>0</b>	<b>0</b>	<b>0</b>	<b>0</b>	<b>0</b>	<b>771</b>		
<b>Percent</b>	<b>3.1%</b>	<b>1.7%</b>	<b>3.8%</b>	<b>20.6%</b>	<b>37.4%</b>	<b>24.4%</b>	<b>7.3%</b>	<b>1.7%</b>	<b>0.1%</b>	<b>0.0%</b>	<b>0.0%</b>	<b>0.0%</b>	<b>0.0%</b>	<b>0.0%</b>			
<b>AM Peak</b>	<b>11:00</b>	<b>08:00</b>	<b>09:00</b>	<b>11:00</b>	<b>08:00</b>	<b>10:00</b>	<b>08:00</b>	<b>07:00</b>							<b>11:00</b>		
<b>Vol.</b>	<b>3</b>	<b>3</b>	<b>4</b>	<b>17</b>	<b>21</b>	<b>18</b>	<b>5</b>	<b>4</b>							<b>63</b>		
<b>PM Peak</b>	<b>15:00</b>	<b>16:00</b>	<b>19:00</b>	<b>16:00</b>	<b>15:00</b>	<b>16:00</b>	<b>12:00</b>	<b>18:00</b>	<b>14:00</b>						<b>16:00</b>		
<b>Vol.</b>	<b>9</b>	<b>3</b>	<b>3</b>	<b>16</b>	<b>28</b>	<b>22</b>	<b>7</b>	<b>2</b>	<b>1</b>						<b>74</b>		

# Burgess & Niple

5085 Reed Rd  
Columbus, OH 43220

Site Code:  
Eastmoor Road btwn Elbern and Dale  
In Front of 280 Eastmoor Road  
Latitude: 0' 0.0000 Undefined  
Longitude: 0' 0.0000 Undefined

Northbound

Start Time	15	20	25	30	35	40	45	50	55	60	65	70	75	999	Total	Pace Speed	Number in Pace
11/17/21	0	0	0	2	2	1	0	0	0	0	0	0	0	0	5	26-35	4
01:00	0	0	0	0	0	0	0	0	0	0	0	0	0	0	0	*	*
02:00	0	0	0	0	0	0	0	0	0	0	0	0	0	0	0	*	*
03:00	0	0	0	0	0	1	1	0	0	0	0	0	0	0	2	34-43	2
04:00	0	0	0	1	0	1	1	0	0	0	0	0	0	0	3	34-43	2
05:00	1	0	1	0	2	2	1	0	0	0	0	0	0	0	7	31-40	4
06:00	3	0	3	4	6	4	1	0	0	0	0	0	0	0	21	31-40	10
07:00	1	1	3	12	15	17	3	2	1	0	0	0	0	0	55	31-40	32
08:00	5	2	1	15	28	17	6	1	0	0	0	0	0	0	75	31-40	45
09:00	0	1	3	17	21	12	1	1	0	0	0	0	0	0	56	26-35	38
10:00	0	1	1	11	20	12	2	0	0	0	0	0	0	0	47	29-38	32
11:00	0	1	3	10	14	10	11	0	0	0	0	0	0	0	49	26-35	24
12 PM	1	0	4	9	26	12	4	0	0	0	0	0	0	0	56	31-40	38
13:00	1	0	3	16	12	14	2	0	0	0	0	0	0	0	48	26-35	28
14:00	1	1	4	7	24	14	6	1	0	0	0	0	0	0	58	31-40	38
15:00	1	1	6	15	17	20	3	4	0	0	0	0	0	0	67	31-40	37
16:00	2	0	4	10	27	13	5	1	0	0	0	0	0	0	62	31-40	40
17:00	1	1	3	11	33	16	2	0	0	0	0	0	0	0	67	31-40	49
18:00	4	0	1	10	16	9	0	0	1	0	0	0	0	0	41	26-35	26
19:00	0	0	2	11	23	4	0	0	1	0	0	0	0	0	41	26-35	34
20:00	2	0	0	6	7	4	2	1	1	0	0	0	0	0	23	26-35	13
21:00	1	0	1	0	2	3	0	0	0	0	0	0	0	0	7	31-40	5
22:00	0	0	2	0	5	0	1	0	0	0	0	0	0	0	8	31-40	5
23:00	0	0	0	1	1	0	2	0	0	0	1	0	0	0	5	41-50	2
<b>Total</b>	<b>24</b>	<b>9</b>	<b>45</b>	<b>168</b>	<b>301</b>	<b>186</b>	<b>54</b>	<b>11</b>	<b>4</b>	<b>0</b>	<b>1</b>	<b>0</b>	<b>0</b>	<b>0</b>	<b>803</b>		
Percent	3.0%	1.1%	5.6%	20.9%	37.5%	23.2%	6.7%	1.4%	0.5%	0.0%	0.1%	0.0%	0.0%	0.0%			
AM Peak	08:00	08:00	06:00	09:00	08:00	07:00	11:00	07:00	07:00						08:00		
Vol.	5	2	3	17	28	17	11	2	1						75		
PM Peak	18:00	14:00	15:00	13:00	17:00	15:00	14:00	15:00	18:00		23:00				15:00		
Vol.	4	1	6	16	33	20	6	4	1		1				67		

# Burgess & Niple

5085 Reed Rd  
Columbus, OH 43220

Site Code:  
Eastmoor Road btwn Elbern and Dale  
In Front of 280 Eastmoor Road  
Latitude: 0' 0.0000 Undefined  
Longitude: 0' 0.0000 Undefined

Northbound

Start Time	1 15	16 20	21 25	26 30	31 35	36 40	41 45	46 50	51 55	56 60	61 65	66 70	71 75	76 999	Total	Pace Speed	Number in Pace
11/18/21	0	0	0	1	0	1	0	0	0	0	0	0	0	0	2	19-28	1
01:00	0	0	0	0	1	0	0	0	0	0	0	0	0	0	1	24-33	1
02:00	0	0	0	0	0	0	0	0	0	0	0	0	0	0	0	*	*
03:00	0	0	0	0	0	1	0	0	0	0	0	0	0	0	1	29-38	1
04:00	0	0	0	0	1	1	0	0	0	0	0	0	0	0	2	29-38	2
05:00	0	1	0	3	6	1	2	0	0	0	0	0	0	0	13	26-35	9
06:00	1	0	2	3	2	8	0	0	0	0	0	0	0	0	16	31-40	10
07:00	1	1	1	10	24	16	3	2	0	0	0	0	0	0	58	31-40	40
08:00	2	1	5	14	26	18	0	0	0	0	0	0	0	0	66	31-40	44
09:00	0	0	0	7	16	16	2	1	0	0	0	0	0	0	42	31-40	32
10:00	0	1	3	13	16	5	5	0	0	0	0	0	0	0	43	26-35	29
11:00	3	2	1	11	20	6	0	1	0	0	0	0	0	0	44	26-35	31
12 PM	1	0	2	12	20	20	3	0	0	0	0	0	0	0	58	31-40	40
13:00	4	1	0	7	13	10	0	0	0	0	0	0	0	0	35	31-40	23
14:00	2	1	4	9	29	11	5	1	0	0	0	0	0	0	62	30-39	40
15:00	2	0	5	19	26	29	7	1	0	0	0	0	0	0	89	31-40	55
16:00	0	0	4	12	26	20	5	0	0	0	0	0	0	0	67	31-40	46
17:00	2	2	6	13	44	12	3	1	0	0	0	0	0	0	83	26-35	57
18:00	1	1	3	9	16	9	5	0	0	0	0	0	0	0	44	26-35	25
19:00	2	0	0	7	12	6	3	3	0	0	0	0	0	0	33	26-35	19
20:00	1	2	1	4	4	1	2	0	0	0	0	0	0	0	15	26-35	8
21:00	0	1	0	0	5	1	1	0	1	0	0	0	0	0	9	31-40	6
22:00	0	0	0	1	4	3	0	1	0	0	0	0	0	0	9	30-39	7
23:00	0	0	0	2	5	1	1	0	0	0	0	0	0	0	9	26-35	7
<b>Total</b>	<b>22</b>	<b>14</b>	<b>37</b>	<b>157</b>	<b>316</b>	<b>196</b>	<b>47</b>	<b>11</b>	<b>1</b>	<b>0</b>	<b>0</b>	<b>0</b>	<b>0</b>	<b>0</b>	<b>801</b>		
Percent	2.7%	1.7%	4.6%	19.6%	39.5%	24.5%	5.9%	1.4%	0.1%	0.0%	0.0%	0.0%	0.0%	0.0%			
AM Peak	11:00	11:00	08:00	08:00	08:00	08:00	10:00	07:00								08:00	
Vol.	3	2	5	14	26	18	5	2								66	
PM Peak	13:00	17:00	17:00	15:00	17:00	15:00	15:00	19:00	21:00							15:00	
Vol.	4	2	6	19	44	29	7	3	1							89	
<b>Total</b>	<b>70</b>	<b>36</b>	<b>111</b>	<b>484</b>	<b>905</b>	<b>570</b>	<b>157</b>	<b>35</b>	<b>6</b>	<b>0</b>	<b>1</b>	<b>0</b>	<b>0</b>	<b>0</b>	<b>2375</b>		
Percent	2.9%	1.5%	4.7%	20.4%	38.1%	24.0%	6.6%	1.5%	0.3%	0.0%	0.0%	0.0%	0.0%	0.0%			

15th Percentile : 26 MPH  
50th Percentile : 32 MPH  
85th Percentile : 38 MPH  
95th Percentile : 42 MPH

Stats  
10 MPH Pace Speed : 31-40 MPH  
Number in Pace : 1475  
Percent in Pace : 62.1%  
Number of Vehicles > 55 MPH : 1  
Percent of Vehicles > 55 MPH : 0.0%  
Mean Speed(Average) : 33 MPH

# Burgess & Niple

5085 Reed Rd  
Columbus, OH 43220

Site Code:  
Eastmoor Road btwn Elbern and Medway  
In Front of 120 Eastmoor Road  
Latitude: 0' 0.0000 Undefined  
Longitude: 0' 0.0000 Undefined

Southbound

Start Time	1 15	16 20	21 25	26 30	31 35	36 40	41 45	46 50	51 55	56 60	61 65	66 70	71 75	76 999	Total	Pace Speed	Number in Pace
11/16/21	0	1	0	0	1	0	0	0	0	0	0	0	0	0	2	9-18	1
01:00	0	0	0	3	1	1	0	0	0	0	0	0	0	0	5	26-35	4
02:00	0	0	0	1	0	1	0	0	0	0	0	0	0	0	2	19-28	1
03:00	0	0	0	0	1	0	0	0	0	0	0	0	0	0	1	24-33	1
04:00	0	0	0	0	0	0	0	0	0	0	0	0	0	0	0	*	*
05:00	0	0	0	0	1	0	1	0	0	0	0	0	0	0	2	24-33	1
06:00	<b>3</b>	0	0	2	5	4	1	0	<b>1</b>	0	0	0	0	0	16	31-40	9
07:00	3	0	2	8	10	4	<b>2</b>	<b>1</b>	0	0	0	0	0	0	30	26-35	18
08:00	0	1	3	5	8	6	1	0	0	0	0	0	0	0	24	29-38	14
09:00	3	2	<b>5</b>	9	9	8	0	0	0	0	0	0	0	0	36	26-35	18
10:00	1	<b>3</b>	2	<b>15</b>	9	7	1	0	0	0	0	0	0	0	38	26-35	24
11:00	1	0	3	12	<b>15</b>	<b>10</b>	2	0	1	0	0	0	0	0	<b>44</b>	26-35	27
12 PM	<b>3</b>	0	8	18	22	13	1	0	0	0	0	0	0	0	65	26-35	40
13:00	3	0	2	10	18	<b>17</b>	2	1	0	0	0	0	0	0	53	31-40	35
14:00	3	<b>2</b>	5	14	24	8	3	1	0	0	0	0	0	0	60	26-35	38
15:00	0	0	3	19	26	12	1	<b>3</b>	<b>1</b>	0	0	0	0	0	65	26-35	45
16:00	0	0	<b>10</b>	21	<b>40</b>	14	3	2	0	0	0	0	0	0	<b>90</b>	26-35	61
17:00	0	1	9	21	22	11	3	1	0	0	0	0	0	0	68	26-35	43
18:00	2	0	4	<b>22</b>	27	10	3	0	0	0	0	0	0	0	68	26-35	49
19:00	0	0	1	8	7	8	<b>4</b>	0	0	0	0	0	0	0	28	31-40	15
20:00	0	1	4	7	12	3	0	0	0	0	0	0	0	0	27	26-35	19
21:00	0	0	3	4	3	4	0	2	0	0	0	0	0	0	16	21-30	7
22:00	0	0	3	5	3	3	1	0	0	0	0	0	0	0	15	21-30	8
23:00	0	0	1	0	0	2	0	1	0	0	0	0	0	0	4	30-39	2
<b>Total</b>	<b>22</b>	<b>11</b>	<b>68</b>	<b>204</b>	<b>264</b>	<b>146</b>	<b>29</b>	<b>12</b>	<b>3</b>	<b>0</b>	<b>0</b>	<b>0</b>	<b>0</b>	<b>0</b>	<b>759</b>		
Percent	2.9%	1.4%	9.0%	26.9%	34.8%	19.2%	3.8%	1.6%	0.4%	0.0%	0.0%	0.0%	0.0%	0.0%			
AM Peak	06:00	10:00	09:00	10:00	11:00	11:00	07:00	07:00	06:00						11:00		
Vol.	3	3	5	15	15	10	2	1	1						44		
PM Peak	12:00	14:00	16:00	18:00	16:00	13:00	19:00	15:00	15:00						16:00		
Vol.	3	2	10	22	40	17	4	3	1						90		

# Burgess & Niple

5085 Reed Rd  
Columbus, OH 43220

Site Code:  
Eastmoor Road btwn Elbern and Medway  
In Front of 120 Eastmoor Road  
Latitude: 0' 0.0000 Undefined  
Longitude: 0' 0.0000 Undefined

Southbound

Start Time	1 15	16 20	21 25	26 30	31 35	36 40	41 45	46 50	51 55	56 60	61 65	66 70	71 75	76 999	Total	Pace Speed	Number in Pace
11/17/21	0	0	1	1	0	2	0	0	0	0	0	0	0	0	4	19-28	2
01:00	0	0	0	0	0	0	0	0	0	0	0	0	0	0	0	*	*
02:00	0	0	0	0	0	2	0	0	0	0	0	0	0	0	2	30-39	2
03:00	0	0	0	1	0	1	0	0	0	0	0	0	0	0	2	19-28	1
04:00	0	0	0	0	1	0	0	0	0	0	0	0	0	0	1	24-33	1
05:00	0	0	1	0	1	1	0	0	0	0	0	0	0	0	3	29-38	2
06:00	<b>2</b>	0	2	2	4	3	0	0	0	0	0	0	0	0	13	29-38	7
07:00	0	1	1	7	11	4	3	1	0	0	0	0	0	0	28	26-35	18
08:00	0	1	1	14	13	7	2	1	0	0	0	0	0	0	39	26-35	27
09:00	0	1	<b>4</b>	<b>12</b>	6	5	3	<b>2</b>	0	0	0	0	0	0	33	25-34	18
10:00	0	<b>2</b>	3	<b>19</b>	12	4	<b>4</b>	0	0	0	0	0	0	0	<b>44</b>	26-35	31
11:00	0	0	3	<b>10</b>	<b>16</b>	<b>10</b>	1	0	0	0	0	0	0	0	40	26-35	26
12 PM	0	0	<b>8</b>	12	25	9	2	0	0	0	0	0	0	0	56	26-35	37
13:00	0	0	7	16	16	13	1	0	0	0	0	0	0	0	53	26-35	32
14:00	1	0	4	17	25	12	2	0	0	0	0	0	0	0	61	26-35	42
15:00	0	<b>2</b>	1	21	22	<b>18</b>	2	<b>1</b>	0	0	0	0	0	0	67	26-35	43
16:00	2	2	8	19	<b>34</b>	16	<b>6</b>	0	0	<b>1</b>	0	0	0	0	<b>88</b>	26-35	53
17:00	<b>4</b>	1	7	<b>27</b>	33	9	2	1	0	0	0	0	0	0	84	26-35	60
18:00	1	0	6	13	27	15	0	0	<b>1</b>	0	0	0	0	0	63	30-39	42
19:00	0	1	4	13	16	4	0	0	0	0	0	0	0	0	38	26-35	29
20:00	0	0	3	11	8	9	1	0	0	0	0	0	0	0	32	26-35	19
21:00	0	0	4	3	13	1	1	0	0	0	0	0	0	0	22	26-35	16
22:00	0	0	0	4	7	1	2	0	0	0	0	0	0	0	14	26-35	11
23:00	0	0	1	2	1	1	0	0	0	0	0	0	0	0	5	26-35	3
<b>Total</b>	10	11	69	224	291	147	32	6	1	1	0	0	0	0	792		
Percent	1.3%	1.4%	8.7%	28.3%	36.7%	18.6%	4.0%	0.8%	0.1%	0.1%	0.0%	0.0%	0.0%	0.0%			
AM Peak	06:00	10:00	09:00	10:00	11:00	11:00	10:00	09:00							10:00		
Vol.	2	2	4	19	16	10	4	2							44		
PM Peak	17:00	15:00	12:00	17:00	16:00	15:00	16:00	15:00	18:00	16:00					16:00		
Vol.	4	2	8	27	34	18	6	1	1	1					88		

# Burgess & Niple

5085 Reed Rd  
Columbus, OH 43220

Site Code:  
Eastmoor Road btwn Elbern and Medway  
In Front of 120 Eastmoor Road  
Latitude: 0' 0.0000 Undefined  
Longitude: 0' 0.0000 Undefined

Southbound

Start Time	1	16	21	26	31	36	41	46	51	56	61	66	71	76	Total	Pace Speed	Number in Pace
	15	20	25	30	35	40	45	50	55	60	65	70	75	999			
11/18/21	0	0	1	0	1	1	0	0	0	0	0	0	0	0	3	29-38	2
01:00	0	0	0	0	0	0	0	0	0	0	0	0	0	0	0	*	*
02:00	0	0	0	2	1	1	0	0	0	0	0	0	0	0	4	24-33	3
03:00	0	0	0	1	1	0	0	0	0	0	0	0	0	0	2	24-33	2
04:00	0	0	0	0	1	0	0	0	0	0	0	0	0	0	1	24-33	1
05:00	0	0	0	2	0	1	0	0	0	0	0	0	0	0	3	20-29	2
06:00	1	0	0	5	0	3	1	0	0	0	0	0	0	0	10	26-35	5
07:00	0	1	4	5	15	2	0	0	1	0	0	0	0	0	28	26-35	20
08:00	0	0	4	11	12	7	1	1	0	0	0	0	0	0	36	26-35	23
09:00	2	1	5	12	14	4	2	0	0	0	0	0	0	0	40	26-35	26
10:00	0	0	2	16	15	6	0	0	0	0	0	0	0	0	39	26-35	31
11:00	0	1	7	13	15	10	3	0	0	0	0	0	0	0	49	26-35	28
12 PM	0	0	2	12	16	6	2	0	0	0	0	0	0	0	38	26-35	28
13:00	1	0	4	15	15	11	2	0	0	0	0	0	0	0	48	26-35	30
14:00	2	1	4	13	18	7	7	1	1	1	0	0	0	0	55	26-35	31
15:00	2	2	5	16	22	23	6	1	0	0	0	0	0	0	77	31-40	45
16:00	2	1	2	26	31	20	2	0	0	0	0	0	0	0	84	26-35	57
17:00	5	0	6	23	30	9	4	0	0	0	0	0	0	0	77	26-35	53
18:00	2	0	6	11	26	12	1	1	0	0	0	0	0	0	59	29-38	38
19:00	0	0	3	8	22	4	5	0	0	1	0	0	0	0	43	26-35	30
20:00	0	1	1	7	13	2	1	0	0	1	0	0	0	0	26	26-35	20
21:00	0	0	2	3	10	2	5	1	0	0	0	0	0	0	23	26-35	13
22:00	0	0	0	5	4	4	2	1	0	0	0	0	0	0	16	26-35	9
23:00	0	0	2	2	1	1	0	0	0	1	0	0	0	0	7	21-30	4
<b>Total</b>	<b>17</b>	<b>8</b>	<b>60</b>	<b>208</b>	<b>283</b>	<b>136</b>	<b>44</b>	<b>6</b>	<b>2</b>	<b>4</b>	<b>0</b>	<b>0</b>	<b>0</b>	<b>0</b>	<b>768</b>		
Percent	2.2%	1.0%	7.8%	27.1%	36.8%	17.7%	5.7%	0.8%	0.3%	0.5%	0.0%	0.0%	0.0%	0.0%			
AM Peak	09:00	07:00	11:00	10:00	07:00	11:00	11:00	08:00	07:00								11:00
Vol.	2	1	7	16	15	10	3	1	1								49
PM Peak	17:00	15:00	17:00	16:00	16:00	15:00	14:00	14:00	14:00	14:00							16:00
Vol.	5	2	6	26	31	23	7	1	1	1							84
<b>Total</b>	<b>49</b>	<b>30</b>	<b>197</b>	<b>636</b>	<b>838</b>	<b>429</b>	<b>105</b>	<b>24</b>	<b>6</b>	<b>5</b>	<b>0</b>	<b>0</b>	<b>0</b>	<b>0</b>	<b>2319</b>		
Percent	2.1%	1.3%	8.5%	27.4%	36.1%	18.5%	4.5%	1.0%	0.3%	0.2%	0.0%	0.0%	0.0%	0.0%			

15th Percentile : 25 MPH  
50th Percentile : 31 MPH  
85th Percentile : 37 MPH  
95th Percentile : 41 MPH

Stats  
10 MPH Pace Speed : 26-35 MPH  
Number in Pace : 1474  
Percent in Pace : 63.6%  
Number of Vehicles > 55 MPH : 5  
Percent of Vehicles > 55 MPH : 0.2%  
Mean Speed(Average) : 32 MPH

# Burgess & Niple

5085 Reed Rd  
Columbus, OH 43220

Site Code:  
Eastmoor Road btwn Elbern and Medway  
In Front of 120 Eastmoor Road  
Latitude: 0' 0.0000 Undefined  
Longitude: 0' 0.0000 Undefined

Northbound

Start Time	1	16	21	26	31	36	41	46	51	56	61	66	71	76	Total	Pace Speed	Number in Pace
	15	20	25	30	35	40	45	50	55	60	65	70	75	999			
11/16/21	0	0	0	0	1	0	0	0	0	0	0	0	0	0	1	24-33	1
01:00	0	0	0	0	0	0	0	0	0	0	0	0	0	0	0	*	*
02:00	0	0	0	0	2	0	0	0	0	0	0	0	0	0	2	25-34	2
03:00	0	0	1	0	1	0	0	0	0	0	0	0	0	0	2	14-23	1
04:00	0	0	0	0	1	0	0	0	0	0	0	0	0	0	1	24-33	1
05:00	0	0	0	7	3	4	0	0	0	0	0	0	0	0	14	26-35	10
06:00	1	0	1	5	4	2	0	0	0	0	0	0	0	0	13	26-35	9
07:00	1	1	7	14	15	6	3	1	0	0	0	0	0	0	48	26-35	29
08:00	0	2	7	27	16	13	1	0	0	0	0	0	0	0	66	26-35	43
09:00	4	0	9	15	11	2	0	0	0	0	0	0	0	0	41	25-34	26
10:00	0	0	7	9	20	5	2	0	0	0	0	0	0	0	43	26-35	29
11:00	1	0	7	30	18	8	2	1	0	0	0	0	0	0	67	26-35	48
12 PM	0	1	6	20	19	13	3	1	0	0	0	0	0	0	63	26-35	39
13:00	4	0	5	19	16	5	0	1	0	0	0	0	0	0	50	26-35	35
14:00	3	0	5	23	22	10	2	0	0	0	0	0	0	0	65	26-35	45
15:00	0	0	6	17	23	9	0	0	0	0	0	0	0	0	55	26-35	40
16:00	0	1	4	26	31	6	1	0	0	0	0	0	0	0	69	26-35	57
17:00	1	2	9	30	24	5	1	0	0	0	0	0	0	0	72	26-35	54
18:00	2	1	3	18	14	1	1	1	0	0	0	0	0	0	41	26-35	32
19:00	0	0	1	9	11	0	0	0	0	0	0	0	0	0	21	26-35	20
20:00	0	0	3	9	8	3	1	0	0	0	0	0	0	0	24	26-35	17
21:00	0	0	3	4	3	0	0	1	0	0	0	0	0	0	11	21-30	7
22:00	0	0	0	2	1	0	0	1	0	0	0	0	0	0	4	24-33	3
23:00	0	0	0	1	0	0	0	0	0	0	0	0	0	0	1	19-28	1
<b>Total</b>	17	8	84	285	264	92	17	7	0	0	0	0	0	0	774		
Percent	2.2%	1.0%	10.9%	36.8%	34.1%	11.9%	2.2%	0.9%	0.0%	0.0%	0.0%	0.0%	0.0%	0.0%			
AM Peak	09:00	08:00	09:00	11:00	10:00	08:00	07:00	07:00							11:00		
Vol.	4	2	9	30	20	13	3	1							67		
PM Peak	13:00	17:00	17:00	17:00	16:00	12:00	12:00	12:00							17:00		
Vol.	4	2	9	30	31	13	3	1							72		

# Burgess & Niple

5085 Reed Rd  
Columbus, OH 43220

Site Code:  
Eastmoor Road btwn Elbern and Medway  
In Front of 120 Eastmoor Road  
Latitude: 0' 0.0000 Undefined  
Longitude: 0' 0.0000 Undefined

Northbound

Start Time	1	16	21	26	31	36	41	46	51	56	61	66	71	76	Total	Pace Speed	Number in Pace
	15	20	25	30	35	40	45	50	55	60	65	70	75	999			
11/17/21	0	0	2	1	1	0	0	0	0	0	0	0	0	0	4	19-28	3
01:00	0	0	0	0	0	0	0	0	0	0	0	0	0	0	0	*	*
02:00	0	0	0	0	0	0	0	0	0	0	0	0	0	0	0	*	*
03:00	0	0	0	0	1	1	0	0	0	0	0	0	0	0	2	29-38	2
04:00	0	0	0	1	1	0	0	0	0	0	0	0	0	0	2	24-33	2
05:00	0	0	0	1	2	5	1	0	0	0	0	0	0	0	9	31-40	7
06:00	0	0	2	6	5	0	0	0	0	0	0	0	0	0	13	26-35	11
07:00	0	0	9	14	18	15	0	0	1	0	0	0	0	0	57	29-38	33
08:00	2	0	14	29	17	8	4	0	0	0	0	0	0	0	74	26-35	46
09:00	2	1	7	18	17	12	0	0	0	0	0	0	0	0	57	26-35	35
10:00	0	0	9	17	20	6	1	0	0	0	0	0	0	0	53	26-35	37
11:00	0	0	5	15	14	10	1	1	0	0	0	0	0	0	46	26-35	29
12 PM	0	0	12	29	24	10	2	0	0	0	0	0	0	0	77	26-35	53
13:00	0	1	10	19	11	5	0	0	0	0	0	0	0	0	46	26-35	30
14:00	1	0	8	17	28	6	2	0	0	0	0	0	0	0	62	26-35	45
15:00	0	5	10	24	22	9	2	1	0	0	0	0	0	0	73	26-35	46
16:00	2	1	7	22	23	10	2	0	0	0	0	0	0	0	67	26-35	45
17:00	3	0	7	22	29	4	0	0	0	0	0	0	0	0	65	26-35	51
18:00	1	0	5	16	17	1	1	1	0	0	0	0	0	0	42	26-35	33
19:00	0	1	3	18	14	0	0	0	0	0	0	0	0	0	36	26-35	32
20:00	1	0	1	6	4	3	0	1	0	0	0	0	0	0	16	26-35	10
21:00	0	1	1	1	3	1	0	0	0	0	0	0	0	0	7	31-40	4
22:00	0	1	1	2	4	1	1	0	0	0	0	0	0	0	10	26-35	6
23:00	0	0	0	0	2	1	0	0	0	0	0	0	0	0	3	29-38	3
<b>Total</b>	12	11	113	278	277	108	17	4	1	0	0	0	0	0	821		
Percent	1.5%	1.3%	13.8%	33.9%	33.7%	13.2%	2.1%	0.5%	0.1%	0.0%	0.0%	0.0%	0.0%	0.0%			
AM Peak	08:00	09:00	08:00	08:00	10:00	07:00	08:00	11:00	07:00						08:00		
Vol.	2	1	14	29	20	15	4	1	1						74		
PM Peak	17:00	15:00	12:00	12:00	17:00	12:00	12:00	15:00							12:00		
Vol.	3	5	12	29	29	10	2	1							77		

**Burgess & Niple**  
5085 Reed Rd  
Columbus, OH 43220

Site Code:  
Eastmoor Road btwn Elbern and Medway  
In Front of 120 Eastmoor Road  
Latitude: 0' 0.0000 Undefined  
Longitude: 0' 0.0000 Undefined

Northbound

Start Time	1 15	16 20	21 25	26 30	31 35	36 40	41 45	46 50	51 55	56 60	61 65	66 70	71 75	76 999	Total	Pace Speed	Number in Pace
11/18/21	0	0	0	1	1	0	0	0	0	1	0	0	0	0	3	24-33	2
01:00	0	0	0	1	0	0	0	0	0	0	0	0	0	0	1	19-28	1
02:00	0	0	0	1	0	0	0	0	0	0	0	0	0	0	1	19-28	1
03:00	0	0	0	0	0	1	0	0	0	0	0	0	0	0	1	29-38	1
04:00	0	0	0	0	2	0	0	0	0	0	0	0	0	0	2	25-34	2
05:00	0	0	3	1	6	2	0	0	0	0	0	0	0	0	12	31-40	8
06:00	0	0	2	4	5	1	0	0	0	0	0	0	0	0	12	26-35	9
07:00	1	0	9	17	23	6	1	0	0	0	0	0	0	0	57	26-35	40
08:00	1	0	9	31	21	11	1	0	0	0	0	0	0	0	74	26-35	52
09:00	0	1	7	14	24	5	0	0	0	0	0	0	0	0	51	26-35	38
10:00	1	1	6	20	12	4	1	0	0	0	0	0	0	0	45	26-35	32
11:00	0	0	7	16	17	4	0	1	0	0	0	0	0	0	45	26-35	33
12 PM	3	1	4	19	25	10	0	0	0	0	0	0	0	0	62	26-35	44
13:00	0	1	8	18	19	3	0	0	0	0	0	0	0	0	49	26-35	37
14:00	2	0	8	13	33	4	1	0	0	0	0	0	0	0	61	26-35	46
15:00	2	2	7	21	32	16	1	0	0	0	0	0	0	0	81	26-35	53
16:00	2	0	6	24	25	10	0	1	0	0	0	0	0	0	68	26-35	49
17:00	1	1	8	33	29	6	3	1	0	0	0	0	0	0	82	26-35	62
18:00	1	0	5	15	19	4	1	0	0	0	0	0	0	0	45	26-35	34
19:00	0	1	9	10	7	6	1	0	0	0	0	0	0	0	34	21-30	19
20:00	0	0	0	7	3	1	1	0	0	0	0	0	0	0	12	26-35	10
21:00	0	0	0	1	4	1	1	0	0	0	0	0	0	0	7	29-38	5
22:00	0	0	1	4	3	0	0	0	0	0	0	0	0	0	8	25-34	7
23:00	0	0	1	8	1	1	0	0	0	0	0	0	0	0	11	25-34	9
<b>Total</b>	14	8	100	279	311	96	12	3	0	1	0	0	0	0	824		
Percent	1.7%	1.0%	12.1%	33.9%	37.7%	11.7%	1.5%	0.4%	0.0%	0.1%	0.0%	0.0%	0.0%	0.0%			
AM Peak	07:00	09:00	07:00	08:00	09:00	08:00	07:00	11:00		00:00					08:00		
Vol.	1	1	9	31	24	11	1	1		1					74		
PM Peak	12:00	15:00	19:00	17:00	14:00	15:00	17:00	16:00							17:00		
Vol.	3	2	9	33	33	16	3	1							82		
<b>Total</b>	43	27	297	842	852	296	46	14	1	1	0	0	0	0	2419		
Percent	1.8%	1.1%	12.3%	34.8%	35.2%	12.2%	1.9%	0.6%	0.0%	0.0%	0.0%	0.0%	0.0%	0.0%			

15th Percentile : 24 MPH  
50th Percentile : 30 MPH  
85th Percentile : 34 MPH  
95th Percentile : 39 MPH

Stats  
10 MPH Pace Speed : 26-35 MPH  
Number in Pace : 1694  
Percent in Pace : 70.0%  
Number of Vehicles > 55 MPH : 1  
Percent of Vehicles > 55 MPH : 0.0%  
Mean Speed(Average) : 30 MPH



# Appendix B

Collision Diagrams

P:\PR59923\Crash Analysis\Crash Diagram\Eastmoor Blvd Sheet 1.dgn Design 12/9/2021 1:24:41PM Cursky

(A) 11/16/2020 - 11/D/C/D\*  
(B) 7/18/2020 - 16/D/C/D\*

EASTMOOR BLVD

EASTMOOR BLVD

E MAIN ST (US 40)

MATCHLINE A

CALCULATED  
GJG  
CHECKED  
KHC

0 25 50  
HORIZONTAL  
SCALE IN FEET

EASTMOOR BLVD & MAIN ST  
COLLISION DIAGRAM

BURGESS & NIPLÉ  
5085 REED ROAD  
COLUMBUS, OHIO 43220

**LEGEND**

CR-SHES  
 P-TTERN  
 - DIRECTION OF TRAVEL  
 - INJURY REPORTED  
 - F-T-LITY REPORTED  
 - AT F-ULT VEHICLE  
 -NGLE  
 RIGHT TURN  
 PEDESTRI-N  
 P-RKED C-R

XX/XX/XXXX - D-TE OF COLLISION  
 13/D/C/D  
 -RO-D CONDITION  
 D - DRY  
 I - ICE  
 WE-THER CONDITION  
 C - CLE-R  
 O - CLOUDY  
 S - SNOW  
 LIGHT CONDITION  
 D - D-YLIGHT  
 U - DUSK  
 L - D-RK, LIGHTED  
 N - D-RK, NOT LIGHTED  
 HOUR OF COLLISION

© 7/19/2020 - 20/U/C/D

MATCHLINE A

MATCHLINE B

EASTMOOR BLVD

EASTMOOR BLVD

BEXLEY PARK RD

BEXLEY PARK RD

**LEGEND**

- CRASHES
- P-TTERN
- DIRECTION OF TR-VEL
- INJURY REPORTED
- F-T-LITY REPORTED
- T F-ULT VEHICLE
- ANGLE
- RIGHT TURN
- PEDESTRI-N
- P-RKED C-R
- XX/XX/XXXX - D-TE OF COLLISION  
13/D/C/D
- RO-D CONDITION  
D - DRY  
I - ICE
- WE-THER CONDITION  
C - CLE-R  
O - CLOUDY  
S - SNOW
- LIGHT CONDITION  
D - D-YLIGHT  
U - DUSK  
L - D-RK, LIGHTED  
N - D-RK, NOT LIGHTED
- HOUR OF COLLISION



CALCULATED  
GJG  
CHECKED  
KHC

0 25 50  
HORIZONTAL  
SCALE IN FEET

EASTMOOR BLVD & BEXLEY PARK RD  
COLLISION DIAGRAM

BURGESS & NIPLÉ  
5085 REED ROAD  
COLUMBUS, OHIO 43220

MATCHLINE B

MATCHLINE C

① 1/12/2016 - 12/D/S/I

EASTMOOR BLVD

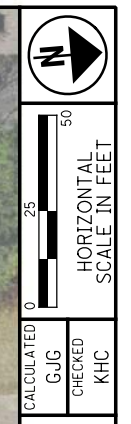
EASTMOOR BLVD

FAIR AVE

FAIR AVE

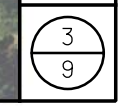
**LEGEND**

- ① - CR-SHES
- P-TTERN
- - DIRECTION OF TRAVEL
- \* - INJURY REPORTED
- + - F-T-LITY REPORTED
- - AT F-ULT VEHICLE
- ↘ - ANGLE
- ↻ - RIGHT TURN
- - PEDESTRI-N
- ↔ - P-RKED C-R
- XX/XX/XXXX - D-TE OF COLLISION  
13/D/C/D
- RO-D CONDITION  
D - DRY  
I - ICE
- WE-THER CONDITION  
C - CLE-R  
O - CLOUDY  
S - SNOW
- LIGHT CONDITION  
D - D-YLIGHT  
U - DUSK  
L - D-RK, LIGHTED  
N - D-RK, NOT LIGHTED
- HOUR OF COLLISION



EASTMOOR BLVD & FAIR AVE  
COLLISION DIAGRAM

**BURGESS & NIPLÉ**  
5085 REED ROAD  
COLUMBUS, OHIO 43220



MATCHLINE C

EASTMOOR BLVD

S VIRGINIALEE RD

DALE AVE

MATCHLINE D

**LEGEND**

- ✱ CR-SHES
- ⬆ P-TTERN
- ➔ - DIRECTION OF TR-VEL
- \* - INJURY REPORTED
- + - F-T-LITY REPORTED
- ➔ - T F-ULT VEHICLE
- ↘ -NGLE
- ↻ RIGHT TURN
- ➔ PEDESTRI-N
- ⊠ P-RKED C-R

XX/XX/XXXX - D-TE OF COLLISION  
13/D/C/D

- RO-D CONDITION  
D - DRY  
I - ICE
- WE-THER CONDITION  
C - CLE-R  
O - CLOUDY  
S - SNOW
- LIGHT CONDITION  
D - D-YLIGHT  
U - DUSK  
L - DARK, LIGHTED  
N - D-RK, NOT LIGHTED

HOUR OF COLLISION

CALCULATED  
GJG

CHECKED  
KHC

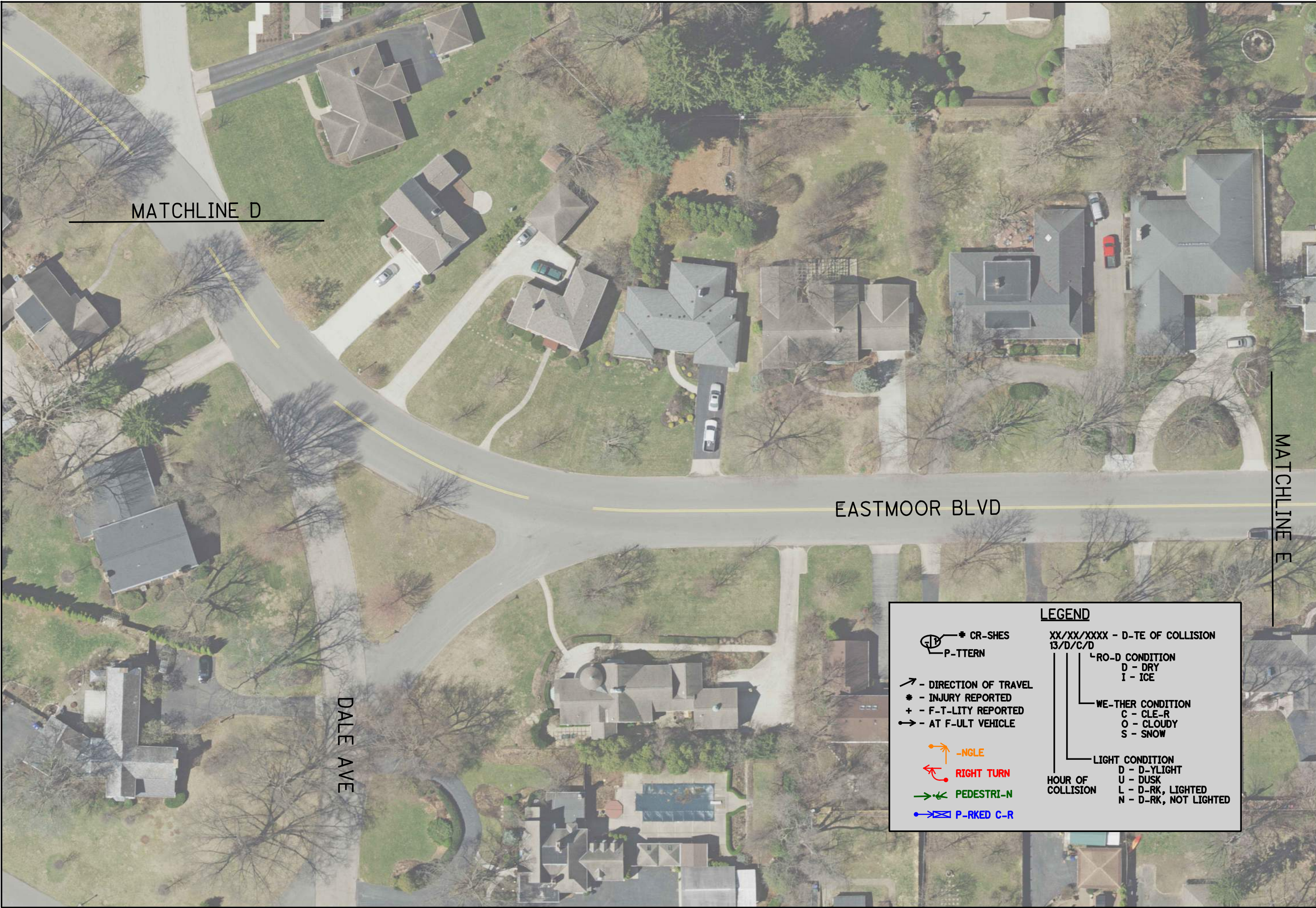
0 25 50  
HORIZONTAL  
SCALE IN FEET

**EASTMOOR BLVD & VIRGINIALEE RD / DALE AVE**

**BURGESS & NIPL**  
5085 REED ROAD  
COLUMBUS, OHIO 43220

**COLLISION DIAGRAM**

P:\PR59923\Crash Analysis\Diagram\Eastmoor Blvd Sheet 5.dgn Design 12/9/2021 12:26:04 PM Gursky



MATCHLINE D

DALE AVE

EASTMOOR BLVD

MATCHLINE E

**LEGEND**

- ☛ CR-SHES
- ☛ P-TTERN
- ➔ - DIRECTION OF TRAVEL
- \* - INJURY REPORTED
- + - F-T-LITY REPORTED
- ➔ - AT F-ULT VEHICLE
- ↘ -NGLE
- ↻ RIGHT TURN
- ➔ PEDESTRI-N
- ➔ P-RKED C-R

XX/XX/XXXX - D-TE OF COLLISION  
13/D/C/D

- RO-D CONDITION
  - D - DRY
  - I - ICE
- WE-THER CONDITION
  - C - CLE-R
  - O - CLOUDY
  - S - SNOW
- LIGHT CONDITION
  - D - D-LIGHT
  - U - DUSK
  - L - D-RK, LIGHTED
  - N - D-RK, NOT LIGHTED
- HOUR OF COLLISION

CALCULATED  
GJG  
CHECKED  
KHC

0 25 50  
HORIZONTAL  
SCALE IN FEET

N

EASTMOOR BLVD & DALE AVE  
COLLISION DIAGRAM

**BURGESS & NIPLÉ**  
5085 REED ROAD  
COLUMBUS, OHIO 43220

MATCHLINE E

MATCHLINE F

EASTMOOR BLVD

EASTMOOR BLVD BETWEEN DALE AVE AND ELBERN AVE COLLISION DIAGRAM

BURGESS & NIPLÉ  
5085 REED ROAD  
COLUMBUS, OHIO 43220

CALCULATED	CJG
CHECKED	KHC

0 25 50  
HORIZONTAL SCALE IN FEET

**LEGEND**

- CR-SHES
- P-TTERN
- DIRECTION OF TRAVEL
- INJURY REPORTED
- F-T-LITY REPORTED
- AT F-ULT VEHICLE
- ANGLE
- RIGHT TURN
- PEDESTRI-N
- P-RKED C-R
- XX/XX/XXXX - D-TE OF COLLISION  
13/D/C/D
- RO-D CONDITION  
D - DRY  
I - ICE
- WE-THER CONDITION  
C - CLE-R  
O - CLOUDY  
S - SNOW
- LIGHT CONDITION  
D - D-YLIT  
U - DUSK  
L - D-RK, LIGHTED  
N - D-RK, NOT LIGHTED
- HOUR OF COLLISION



MATCHLINE F

① 11/12/2016 - 18/L/O/D  
8/24/2017 - 4/N/C/D

ELBERN AVE

EASTMOOR BLVD

ELBERN AVE

MATCHLINE G

MEDWAY AVE

②

**LEGEND**

- CR-SHES
- P-TTERN
- DIRECTION OF TRAVEL
- INJURY REPORTED
- F-T-LITY REPORTED
- AT F-ULT VEHICLE
- ANGLE
- RIGHT TURN
- PEDESTRI-N
- P-RKED C-R
- XX/XX/XXXX - D-TE OF COLLISION  
13/D/C/D
- RO-D CONDITION  
D - DRY  
I - ICE
- WE-THER CONDITION  
C - CLE-R  
O - CLOUDY  
S - SNOW
- LIGHT CONDITION  
D - D-LIGHT  
U - DUSK  
L - D-RK, LIGHTED  
N - D-RK, NOT LIGHTED
- HOUR OF COLLISION

CALCULATED  
GJG  
CHECKED  
KHC

0 25 50  
HORIZONTAL  
SCALE IN FEET

EASTMOOR BLVD & ELBERN AVE  
COLLISION DIAGRAM

BURGESS & NIPLÉ  
5085 REED ROAD  
COLUMBUS, OHIO 43220

① 11/24/2017 - 7/D/C/D

MATCHLINE H

S VIRGINIALEE RD

EASTMOOR BLVD

BROADMOOR AVE

①

MATCHLINE G

**LEGEND**

- CR-SHES
- ⊙ P-TTERN
- ↔ - DIRECTION OF TRAVEL
- \* - INJURY REPORTED
- + - F-T-LITY REPORTED
- ↔ - AT F-ULT VEHICLE
- ↘ -NGLE
- ↻ RIGHT TURN
- PEDESTRI-N
- ↔ P-RKED C-R
- XX/XX/XXXX - D-TE OF COLLISION  
13/D/C/D
- RO-D CONDITION  
D - DRY  
I - ICE
- WE-THER CONDITION  
C - CLE-R  
O - CLOUDY  
S - SNOW
- LIGHT CONDITION  
D - D-YLIGHT  
U - DUSK  
L - D-RK, LIGHTED  
N - D-RK, NOT LIGHTED
- HOUR OF COLLISION

CALCULATED  
GJG  
CHECKED  
KHC

0 25 50  
HORIZONTAL  
SCALE IN FEET

EASTMOOR BLVD & BROADMOOR AVE  
COLLISION DIAGRAM

BURGESS & NIPLÉ  
5085 REED ROAD  
COLUMBUS, OHIO 43220



P:\PR59923\Crash Analysis\Crash Diagram\Eastmoor Blvd Sheet 8.dgn Design 12/9/2021 12:26:42 PM Gursky

P:\PR59923\Crash Analysis\Crash Diagram\Eastmoor Blvd Sheet 9.dgn Design 12/9/2021 12:26:55 PM Gursky



MATCHLINE H

S HARDING RD

N HARDING RD

E BROAD ST (SR 16)

EASTMOOR BLVD

E BROAD ST FRONTAGE

E BROAD ST (SR 16)

**LEGEND**

- CR-SHES
  - ⊙ P-TTERN
- ↔ - DIRECTION OF TRAVEL
  - \* - INJURY REPORTED
  - + - F-T-LITY REPORTED
  - ↔ - AT F-ULT VEHICLE
- ↘ -NGLE
  - ↻ RIGHT TURN
  - PEDESTRI-N
  - ↔ P-RKED C-R
- XX/XX/XXXX - D-TE OF COLLISION
  - 13/D/C/D
  - RO-D CONDITION
    - D - DRY
    - I - ICE
  - WE-THER CONDITION
    - C - CLE-R
    - O - CLOUDY
    - S - SNOW
  - LIGHT CONDITION
    - D - D-LIGHT
    - U - DUSK
    - L - D-RK, LIGHTED
    - N - D-RK, NOT LIGHTED
  - HOUR OF COLLISION

CALCULATED  
GJG  
CHECKED  
KHC

0 25 50  
HORIZONTAL  
SCALE IN FEET

EASTMOOR BLVD & E BROAD ST  
COLLISION DIAGRAM

**BURGESS & NIPLÉ**  
5085 REED ROAD  
COLUMBUS, OHIO 43220





# Appendix C

Raw Parking Utilization Data

9/28/2021 8am

Plate read	Address	Patroller	LPR unit	User	Event timestamp	Rule	Manual capture	Latitude	Longitude
HRW9303	198 EASTMOOR BLVD COLUMBUS, 43209	Unit 28505	Unit 28505 Left-Right	1	9/28/2021 20:11	OCCUPANCY	No	39.9674283	-82.91639188
HBV4076	455 EASTMOOR BLVD COLUMBUS, 43209	Unit 28505	Unit 28505 Left-Right	10	9/28/2021 9:10	OCCUPANCY	No	39.9618552	-82.91831303
JM18485	467 EASTMOOR BLVD COLUMBUS, 43209	Unit 28505	Unit 28505 Left-Right	10	9/28/2021 9:10	OCCUPANCY	No	39.9617775	-82.91831916
JFM8189	463 EASTMOOR BLVD COLUMBUS, 43209	Unit 28505	Unit 28505 Left-Right	10	9/28/2021 9:10	OCCUPANCY	No	39.9617075	-82.91832575
GSW6332	485 EASTMOOR BLVD COLUMBUS, 43209	Unit 28505	Unit 28505 Left-Right	10	9/28/2021 9:11	OCCUPANCY	No	39.9612717	-82.91838969
GVP3485	525 EASTMOOR BLVD COLUMBUS, 43209	Unit 28505	Unit 28505 Left-Right	10	9/28/2021 9:11	OCCUPANCY	No	39.9601968	-82.91848008
TR6112357	575 EASTMOOR BLVD COLUMBUS, 43209	Unit 28505	Unit 28505 Left-Right	10	9/28/2021 9:11	OCCUPANCY	No	39.9592325	-82.91860708
BRAD2	581 EASTMOOR BLVD COLUMBUS, 43209	Unit 28505	Unit 28505 Left-Right	10	9/28/2021 9:11	OCCUPANCY	No	39.9590462	-82.91861219
1KMC	603 EASTMOOR BLVD COLUMBUS, 43209	Unit 28505	Unit 28505 Left-Right	10	9/28/2021 9:11	OCCUPANCY	No	39.9588736	-82.91862391
FCA5076	615 EASTMOOR BLVD COLUMBUS, 43209	Unit 28505	Unit 28505 Left-Right	10	9/28/2021 9:11	OCCUPANCY	No	39.9585364	-82.91865226
VETA6	627 EASTMOOR BLVD COLUMBUS, 43209	Unit 28505	Unit 28505 Left-Right	10	9/28/2021 9:11	OCCUPANCY	No	39.9582163	-82.91868583
HNN1946	633 EASTMOOR BLVD COLUMBUS, 43209	Unit 28505	Unit 28505 Left-Right	10	9/28/2021 9:11	OCCUPANCY	No	39.9579745	-82.91870023
JML8567	669 EASTMOOR BLVD COLUMBUS, 43209	Unit 28505	Unit 28505 Left-Right	10	9/28/2021 9:11	OCCUPANCY	No	39.9574679	-82.91874174
MRSJAG	669 EASTMOOR BLVD COLUMBUS, 43209	Unit 28505	Unit 28505 Left-Right	10	9/28/2021 9:11	OCCUPANCY	No	39.9574679	-82.91874174
353YMN	273 EASTMOOR BLVD COLUMBUS, 43209	Unit 28505	Unit 28505 Left-Right	1	9/28/2021 20:06	OCCUPANCY	No	39.9658688	-82.91860655
HYT3705	315 EASTMOOR BLVD COLUMBUS, 43209	Unit 28505	Unit 28505 Left-Right	1	9/28/2021 20:06	OCCUPANCY	No	39.9648578	-82.91669552
HWV5446	445 EASTMOOR BLVD COLUMBUS, 43209	Unit 28505	Unit 28505 Left-Right	10	9/28/2021 9:10	OCCUPANCY	No	39.9620948	-82.91828339
GEP2602	435 EASTMOOR BLVD COLUMBUS, 43209	Unit 28505	Unit 28505 Left-Right	1	9/28/2021 20:07	OCCUPANCY	No	39.9622285	-82.91825171
GEP2602	435 EASTMOOR BLVD COLUMBUS, 43209	Unit 28505	Unit 28505 Left-Right	10	9/28/2021 9:10	OCCUPANCY	No	39.9621775	-82.91827123
FKZ2417	214 EASTMOOR BLVD COLUMBUS, 43209	Unit 28505	Unit 28505 Left-Right	10	9/28/2021 9:08	OCCUPANCY	No	39.9671295	-82.91641781
GLX2793	654 EASTMOOR BLVD COLUMBUS, 43209	Unit 28505	Unit 28505 Left-Right	10	9/28/2021 9:06	OCCUPANCY	No	39.9575983	-82.91860882
GSF8819	616 EASTMOOR BLVD COLUMBUS, 43209	Unit 28505	Unit 28505 Left-Right	10	9/28/2021 9:06	OCCUPANCY	No	39.9583683	-82.91854119
L654	618 EASTMOOR BLVD COLUMBUS, 43209	Unit 28505	Unit 28505 Left-Right	10	9/28/2021 9:06	OCCUPANCY	No	39.9585183	-82.91852739
FWA9785	598 EASTMOOR BLVD COLUMBUS, 43209	Unit 28505	Unit 28505 Left-Right	10	9/28/2021 9:06	OCCUPANCY	No	39.9589083	-82.91849312
EEF1092	536 EASTMOOR BLVD COLUMBUS, 43209	Unit 28505	Unit 28505 Left-Right	10	9/28/2021 9:07	OCCUPANCY	No	39.9602183	-82.91837093
HWV5423	522 EASTMOOR BLVD COLUMBUS, 43209	Unit 28505	Unit 28505 Left-Right	10	9/28/2021 9:07	OCCUPANCY	No	39.9605183	-82.91834006
FMD4914	490 EASTMOOR BLVD COLUMBUS, 43209	Unit 28505	Unit 28505 Left-Right	10	9/28/2021 9:07	OCCUPANCY	No	39.9610083	-82.91829009
HTW5434	484 EASTMOOR BLVD COLUMBUS, 43209	Unit 28505	Unit 28505 Left-Right	10	9/28/2021 9:07	OCCUPANCY	No	39.9611795	-82.91827445
GRJ8926	468 EASTMOOR BLVD COLUMBUS, 43209	Unit 28505	Unit 28505 Left-Right	10	9/28/2021 9:07	OCCUPANCY	No	39.9616604	-82.91822648
HRW9543	400 EASTMOOR BLVD COLUMBUS, 43209	Unit 28505	Unit 28505 Left-Right	10	9/28/2021 9:07	OCCUPANCY	No	39.9629126	-82.91803043
FMG9504	386 EASTMOOR BLVD COLUMBUS, 43209	Unit 28505	Unit 28505 Left-Right	10	9/28/2021 9:07	OCCUPANCY	No	39.9631867	-82.91781764
HLL1216	324 EASTMOOR BLVD COLUMBUS, 43209	Unit 28505	Unit 28505 Left-Right	10	9/28/2021 9:08	OCCUPANCY	No	39.9647395	-82.91662116
HZB7359	280 EASTMOOR BLVD COLUMBUS, 43209	Unit 28505	Unit 28505 Left-Right	10	9/28/2021 9:08	OCCUPANCY	No	39.9658095	-82.91652932
HPJ9120	240 EASTMOOR BLVD COLUMBUS, 43209	Unit 28505	Unit 28505 Left-Right	10	9/28/2021 9:08	OCCUPANCY	No	39.9665895	-82.91646253
FFW429Q	214 EASTMOOR BLVD COLUMBUS, 43209	Unit 28505	Unit 28505 Left-Right	10	9/28/2021 9:08	OCCUPANCY	No	39.9671295	-82.91641781
GZM7362	100 EASTMOOR BLVD COLUMBUS, 43209	Unit 28505	Unit 28505 Left-Right	10	9/28/2021 9:08	OCCUPANCY	No	39.9694741	-82.91742865
HQC3429	662 EASTMOOR BLVD COLUMBUS, 43209	Unit 28505	Unit 28505 Left-Right	10	9/28/2021 9:06	OCCUPANCY	No	39.9573422	-82.91863458
HWV5446	435 EASTMOOR BLVD COLUMBUS, 43209	Unit 28505	Unit 28505 Left-Right	1	9/28/2021 20:07	OCCUPANCY	No	39.9621487	-82.9182633
JM18485	455 EASTMOOR BLVD COLUMBUS, 43209	Unit 28505	Unit 28505 Left-Right	1	9/28/2021 20:07	OCCUPANCY	No	39.9618008	-82.91830032
1KMC	612 EASTMOOR BLVD COLUMBUS, 43209	Unit 28505	Unit 28505 Left-Right	1	9/28/2021 20:09	OCCUPANCY	No	39.9586183	-82.91851818
669YQV	612 EASTMOOR BLVD COLUMBUS, 43209	Unit 28505	Unit 28505 Left-Right	1	9/28/2021 20:09	OCCUPANCY	No	39.9587083	-82.91851153
FWA9785	598 EASTMOOR BLVD COLUMBUS, 43209	Unit 28505	Unit 28505 Left-Right	1	9/28/2021 20:09	OCCUPANCY	No	39.9588883	-82.91849496
EEF1092	542 EASTMOOR BLVD COLUMBUS, 43209	Unit 28505	Unit 28505 Left-Right	1	9/28/2021 20:09	OCCUPANCY	No	39.9601595	-82.91837645
GGZ5810	536 EASTMOOR BLVD COLUMBUS, 43209	Unit 28505	Unit 28505 Left-Right	1	9/28/2021 20:09	OCCUPANCY	No	39.9602595	-82.91836561
HWV5423	522 EASTMOOR BLVD COLUMBUS, 43209	Unit 28505	Unit 28505 Left-Right	1	9/28/2021 20:09	OCCUPANCY	No	39.9605383	-82.91833822
HWQ3081	504 EASTMOOR BLVD COLUMBUS, 43209	Unit 28505	Unit 28505 Left-Right	1	9/28/2021 20:09	OCCUPANCY	No	39.9609895	-82.91829356
FMD4914	490 EASTMOOR BLVD COLUMBUS, 43209	Unit 28505	Unit 28505 Left-Right	1	9/28/2021 20:09	OCCUPANCY	No	39.9610695	-82.91828262
FOY1493	468 EASTMOOR BLVD COLUMBUS, 43209	Unit 28505	Unit 28505 Left-Right	1	9/28/2021 20:10	OCCUPANCY	No	39.9616117	-82.91822571
GRJ8926	468 EASTMOOR BLVD COLUMBUS, 43209	Unit 28505	Unit 28505 Left-Right	1	9/28/2021 20:10	OCCUPANCY	No	39.9616727	-82.91822679
FMG9504	386 EASTMOOR BLVD COLUMBUS, 43209	Unit 28505	Unit 28505 Left-Right	1	9/28/2021 20:10	OCCUPANCY	No	39.9631285	-82.91787449
HLL1216	324 EASTMOOR BLVD COLUMBUS, 43209	Unit 28505	Unit 28505 Left-Right	1	9/28/2021 20:10	OCCUPANCY	No	39.9647208	-82.91662299
HPL8874	280 EASTMOOR BLVD COLUMBUS, 43209	Unit 28505	Unit 28505 Left-Right	1	9/28/2021 20:10	OCCUPANCY	No	39.9657695	-82.916533
HZB7359	280 EASTMOOR BLVD COLUMBUS, 43209	Unit 28505	Unit 28505 Left-Right	1	9/28/2021 20:10	OCCUPANCY	No	39.9657695	-82.916533
FFW429Q	214 EASTMOOR BLVD COLUMBUS, 43209	Unit 28505	Unit 28505 Left-Right	1	9/28/2021 20:11	OCCUPANCY	No	39.9670295	-82.91642537
PMD2516	644 EASTMOOR BLVD COLUMBUS, 43209	Unit 28505	Unit 28505 Left-Right	1	9/28/2021 20:09	OCCUPANCY	No	39.9580283	-82.91856923
HBV4076	455 EASTMOOR BLVD COLUMBUS, 43209	Unit 28505	Unit 28505 Left-Right	1	9/28/2021 20:07	OCCUPANCY	No	39.9618684	-82.91829523
GLX2793	648 EASTMOOR BLVD COLUMBUS, 43209	Unit 28505	Unit 28505 Left-Right	1	9/28/2021 20:09	OCCUPANCY	No	39.9576883	-82.91859891
HQS7482	664 EASTMOOR BLVD COLUMBUS, 43209	Unit 28505	Unit 28505 Left-Right	1	9/28/2021 20:09	OCCUPANCY	No	39.9574783	-82.91861824
JFM8189	461 EASTMOOR BLVD COLUMBUS, 43209	Unit 28505	Unit 28505 Left-Right	1	9/28/2021 20:07	OCCUPANCY	No	39.9617488	-82.91830474
JKU8622	463 EASTMOOR BLVD COLUMBUS, 43209	Unit 28505	Unit 28505 Left-Right	1	9/28/2021 20:07	OCCUPANCY	No	39.9616979	-82.91831156
GSW6332	485 EASTMOOR BLVD COLUMBUS, 43209	Unit 28505	Unit 28505 Left-Right	1	9/28/2021 20:07	OCCUPANCY	No	39.9613005	-82.91836463
HAS7607	485 EASTMOOR BLVD COLUMBUS, 43209	Unit 28505	Unit 28505 Left-Right	1	9/28/2021 20:07	OCCUPANCY	No	39.9612436	-82.91835803
GVP3485	525 EASTMOOR BLVD COLUMBUS, 43209	Unit 28505	Unit 28505 Left-Right	1	9/28/2021 20:08	OCCUPANCY	No	39.9602369	-82.91845213
DTB5936	575 EASTMOOR BLVD COLUMBUS, 43209	Unit 28505	Unit 28505 Left-Right	1	9/28/2021 20:08	OCCUPANCY	No	39.9592767	-82.91857952
FCA5076	615 EASTMOOR BLVD COLUMBUS, 43209	Unit 28505	Unit 28505 Left-Right	1	9/28/2021 20:08	OCCUPANCY	No	39.9585658	-82.91862376
VETA6	629 EASTMOOR BLVD COLUMBUS, 43209	Unit 28505	Unit 28505 Left-Right	1	9/28/2021 20:08	OCCUPANCY	No	39.9582469	-82.91865029
HNN1946	633 EASTMOOR BLVD COLUMBUS, 43209	Unit 28505	Unit 28505 Left-Right	1	9/28/2021 20:08	OCCUPANCY	No	39.9579376	-82.91868279
HQC3429	663 EASTMOOR BLVD COLUMBUS, 43209	Unit 28505	Unit 28505 Left-Right	1	9/28/2021 20:08	OCCUPANCY	No	39.9575147	-82.91872163
GHW6992	669 EASTMOOR BLVD COLUMBUS, 43209	Unit 28505	Unit 28505 Left-Right	1	9/28/2021 20:08	OCCUPANCY	No	39.9574377	-82.91872929
JML8567	669 EASTMOOR BLVD COLUMBUS, 43209	Unit 28505	Unit 28505 Left-Right	1	9/28/2021 20:08	OCCUPANCY	No	39.9574377	-82.91872929
GRJ6443	675 EASTMOOR BLVD COLUMBUS, 43209	Unit 28505	Unit 28505 Left-Right	1	9/28/2021 20:09	OCCUPANCY	No	39.9572227	-82.91871986
JHY9962	662 EASTMOOR BLVD COLUMBUS, 43209	Unit 28505	Unit 28505 Left-Right	1	9/28/2021 20:09	OCCUPANCY	No	39.9574091	-82.91862567
SZA5420	664 EASTMOOR BLVD COLUMBUS, 43209	Unit 28505	Unit 28505 Left-Right	1	9/28/2021 20:09	OCCUPANCY	No	39.9574783	-82.91861824
JIE5414	654 EASTMOOR BLVD COLUMBUS, 43209	Unit 28505	Unit 28505 Left-Right	1	9/28/2021 20:09	OCCUPANCY	No	39.9575383	-82.91861272
P9016537	670 EASTMOOR BLVD COLUMBUS, 43209	Unit 28505	Unit 28505 Left-Right	10	9/28/2021 9:06	OCCUPANCY	No	39.9572709	-82.91862542

9/28/2021 8pm

Plate read	Address	Patroller	LPR unit	User	Event timestamp	Rule	Manual capture	Latitude	Longitude
HRW9303	198 EASTMOOR BLVD COLUMBUS, 43209	Unit 28505	Unit 28505 Left-Right		1 9/28/2021 20:11	OCCUPANCY	No	39.96742827	-82.916392
GRJ6443	675 EASTMOOR BLVD COLUMBUS, 43209	Unit 28505	Unit 28505 Left-Right		1 9/28/2021 20:09	OCCUPANCY	No	39.95722701	-82.91872
JML8567	669 EASTMOOR BLVD COLUMBUS, 43209	Unit 28505	Unit 28505 Left-Right		1 9/28/2021 20:08	OCCUPANCY	No	39.9574377	-82.918729
GHV6992	669 EASTMOOR BLVD COLUMBUS, 43209	Unit 28505	Unit 28505 Left-Right		1 9/28/2021 20:08	OCCUPANCY	No	39.9574377	-82.918729
HQC3429	663 EASTMOOR BLVD COLUMBUS, 43209	Unit 28505	Unit 28505 Left-Right		1 9/28/2021 20:08	OCCUPANCY	No	39.95751466	-82.918722
HNN1946	633 EASTMOOR BLVD COLUMBUS, 43209	Unit 28505	Unit 28505 Left-Right		1 9/28/2021 20:08	OCCUPANCY	No	39.95793759	-82.918683
VETAE	629 EASTMOOR BLVD COLUMBUS, 43209	Unit 28505	Unit 28505 Left-Right		1 9/28/2021 20:08	OCCUPANCY	No	39.95824688	-82.918865
FCA5076	615 EASTMOOR BLVD COLUMBUS, 43209	Unit 28505	Unit 28505 Left-Right		1 9/28/2021 20:08	OCCUPANCY	No	39.95856581	-82.918624
DTB5936	575 EASTMOOR BLVD COLUMBUS, 43209	Unit 28505	Unit 28505 Left-Right		1 9/28/2021 20:08	OCCUPANCY	No	39.95927671	-82.918858
GVP3485	525 EASTMOOR BLVD COLUMBUS, 43209	Unit 28505	Unit 28505 Left-Right		1 9/28/2021 20:08	OCCUPANCY	No	39.9602369	-82.918452
HAS7607	485 EASTMOOR BLVD COLUMBUS, 43209	Unit 28505	Unit 28505 Left-Right		1 9/28/2021 20:07	OCCUPANCY	No	39.96124358	-82.918358
GSW6332	485 EASTMOOR BLVD COLUMBUS, 43209	Unit 28505	Unit 28505 Left-Right		1 9/28/2021 20:07	OCCUPANCY	No	39.96130053	-82.918365
JKU8622	463 EASTMOOR BLVD COLUMBUS, 43209	Unit 28505	Unit 28505 Left-Right		1 9/28/2021 20:07	OCCUPANCY	No	39.96169787	-82.918312
JFM8189	461 EASTMOOR BLVD COLUMBUS, 43209	Unit 28505	Unit 28505 Left-Right		1 9/28/2021 20:07	OCCUPANCY	No	39.96174875	-82.918305
JMJ8485	455 EASTMOOR BLVD COLUMBUS, 43209	Unit 28505	Unit 28505 Left-Right		1 9/28/2021 20:07	OCCUPANCY	No	39.96180801	-82.918183
HBV4076	455 EASTMOOR BLVD COLUMBUS, 43209	Unit 28505	Unit 28505 Left-Right		1 9/28/2021 20:07	OCCUPANCY	No	39.96186836	-82.918295
HWV5446	435 EASTMOOR BLVD COLUMBUS, 43209	Unit 28505	Unit 28505 Left-Right		1 9/28/2021 20:07	OCCUPANCY	No	39.96214872	-82.918263
GEP2602	435 EASTMOOR BLVD COLUMBUS, 43209	Unit 28505	Unit 28505 Left-Right		1 9/28/2021 20:07	OCCUPANCY	No	39.9622285	-82.918252
JHY9962	662 EASTMOOR BLVD COLUMBUS, 43209	Unit 28505	Unit 28505 Left-Right		1 9/28/2021 20:09	OCCUPANCY	No	39.95740911	-82.918626
HYT3705	315 EASTMOOR BLVD COLUMBUS, 43209	Unit 28505	Unit 28505 Left-Right		1 9/28/2021 20:06	OCCUPANCY	No	39.96485784	-82.916696
SZA5420	664 EASTMOOR BLVD COLUMBUS, 43209	Unit 28505	Unit 28505 Left-Right		1 9/28/2021 20:09	OCCUPANCY	No	39.95747827	-82.918618
JIE5414	654 EASTMOOR BLVD COLUMBUS, 43209	Unit 28505	Unit 28505 Left-Right		1 9/28/2021 20:09	OCCUPANCY	No	39.95753827	-82.918613
FFW429Q	214 EASTMOOR BLVD COLUMBUS, 43209	Unit 28505	Unit 28505 Left-Right		1 9/28/2021 20:11	OCCUPANCY	No	39.96702952	-82.916425
HZB7359	280 EASTMOOR BLVD COLUMBUS, 43209	Unit 28505	Unit 28505 Left-Right		1 9/28/2021 20:10	OCCUPANCY	No	39.96576952	-82.916533
HPL8874	280 EASTMOOR BLVD COLUMBUS, 43209	Unit 28505	Unit 28505 Left-Right		1 9/28/2021 20:10	OCCUPANCY	No	39.96576952	-82.916533
HHL1216	324 EASTMOOR BLVD COLUMBUS, 43209	Unit 28505	Unit 28505 Left-Right		1 9/28/2021 20:10	OCCUPANCY	No	39.96472077	-82.916623
FMG9504	386 EASTMOOR BLVD COLUMBUS, 43209	Unit 28505	Unit 28505 Left-Right		1 9/28/2021 20:10	OCCUPANCY	No	39.96312855	-82.917874
GRJ8926	468 EASTMOOR BLVD COLUMBUS, 43209	Unit 28505	Unit 28505 Left-Right		1 9/28/2021 20:10	OCCUPANCY	No	39.96167269	-82.918227
F0Y1493	468 EASTMOOR BLVD COLUMBUS, 43209	Unit 28505	Unit 28505 Left-Right		1 9/28/2021 20:10	OCCUPANCY	No	39.96161172	-82.918226
FMD4914	490 EASTMOOR BLVD COLUMBUS, 43209	Unit 28505	Unit 28505 Left-Right		1 9/28/2021 20:09	OCCUPANCY	No	39.96106952	-82.918286
HWQ3081	504 EASTMOOR BLVD COLUMBUS, 43209	Unit 28505	Unit 28505 Left-Right		1 9/28/2021 20:09	OCCUPANCY	No	39.96098952	-82.918294
HWV5423	522 EASTMOOR BLVD COLUMBUS, 43209	Unit 28505	Unit 28505 Left-Right		1 9/28/2021 20:09	OCCUPANCY	No	39.96053827	-82.918338
GGZ5810	536 EASTMOOR BLVD COLUMBUS, 43209	Unit 28505	Unit 28505 Left-Right		1 9/28/2021 20:09	OCCUPANCY	No	39.96025952	-82.918366
EEF1092	542 EASTMOOR BLVD COLUMBUS, 43209	Unit 28505	Unit 28505 Left-Right		1 9/28/2021 20:09	OCCUPANCY	No	39.96015952	-82.918376
FWA9785	598 EASTMOOR BLVD COLUMBUS, 43209	Unit 28505	Unit 28505 Left-Right		1 9/28/2021 20:09	OCCUPANCY	No	39.95888827	-82.918495
669YQV	612 EASTMOOR BLVD COLUMBUS, 43209	Unit 28505	Unit 28505 Left-Right		1 9/28/2021 20:09	OCCUPANCY	No	39.95870827	-82.918512
1KMC	612 EASTMOOR BLVD COLUMBUS, 43209	Unit 28505	Unit 28505 Left-Right		1 9/28/2021 20:09	OCCUPANCY	No	39.95861827	-82.918518
PMD2516	644 EASTMOOR BLVD COLUMBUS, 43209	Unit 28505	Unit 28505 Left-Right		1 9/28/2021 20:09	OCCUPANCY	No	39.95802827	-82.918569
GLX2793	648 EASTMOOR BLVD COLUMBUS, 43209	Unit 28505	Unit 28505 Left-Right		1 9/28/2021 20:09	OCCUPANCY	No	39.95768827	-82.918599
HQS7482	664 EASTMOOR BLVD COLUMBUS, 43209	Unit 28505	Unit 28505 Left-Right		1 9/28/2021 20:09	OCCUPANCY	No	39.95747827	-82.918618
353YMN	273 EASTMOOR BLVD COLUMBUS, 43209	Unit 28505	Unit 28505 Left-Right		1 9/28/2021 20:06	OCCUPANCY	No	39.96588798	-82.916607

9/30/2021 9am

Plate read	Address	Patroller	LPR unit	User	Event timestamp	Rule	Manual capture	Latitude	Longitude
HQX7352	670 EASTMOOR BLVD COLUMBUS, 43209	Unit 28505	Unit 28505 Left-Right		10 9/30/2021 9:09	OCCUPANCY	No	39.95724841	-82.918624
HWV5446	435 EASTMOOR BLVD COLUMBUS, 43209	Unit 28505	Unit 28505 Left-Right		10 9/30/2021 9:13	OCCUPANCY	No	39.96211734	-82.918261
JM18485	455 EASTMOOR BLVD COLUMBUS, 43209	Unit 28505	Unit 28505 Left-Right		10 9/30/2021 9:13	OCCUPANCY	No	39.9618969	-82.918288
JFM8189	467 EASTMOOR BLVD COLUMBUS, 43209	Unit 28505	Unit 28505 Left-Right		10 9/30/2021 9:13	OCCUPANCY	No	39.96178811	-82.918301
GSW6332	485 EASTMOOR BLVD COLUMBUS, 43209	Unit 28505	Unit 28505 Left-Right		10 9/30/2021 9:13	OCCUPANCY	No	39.9612737	-82.918388
HDB9562	489 EASTMOOR BLVD COLUMBUS, 43209	Unit 28505	Unit 28505 Left-Right		10 9/30/2021 9:13	OCCUPANCY	No	39.96108827	-82.918386
GVP3485	525 EASTMOOR BLVD COLUMBUS, 43209	Unit 28505	Unit 28505 Left-Right		10 9/30/2021 9:13	OCCUPANCY	No	39.96016654	-82.918467
SXP4976	85 EASTMOOR BLVD COLUMBUS, 43209	Unit 28505	Unit 28505 Left-Right		10 9/30/2021 9:12	OCCUPANCY	No	39.96973512	-82.917849
BRAD2	587 EASTMOOR BLVD COLUMBUS, 43209	Unit 28505	Unit 28505 Left-Right		10 9/30/2021 9:14	OCCUPANCY	No	39.95900814	-82.918592
FCA5076	615 EASTMOOR BLVD COLUMBUS, 43209	Unit 28505	Unit 28505 Left-Right		10 9/30/2021 9:14	OCCUPANCY	No	39.95859689	-82.918627
VEAE	627 EASTMOOR BLVD COLUMBUS, 43209	Unit 28505	Unit 28505 Left-Right		10 9/30/2021 9:14	OCCUPANCY	No	39.95821558	-82.918661
HNN1946	639 EASTMOOR BLVD COLUMBUS, 43209	Unit 28505	Unit 28505 Left-Right		10 9/30/2021 9:14	OCCUPANCY	No	39.95792625	-82.918686
RAM500	647 EASTMOOR BLVD COLUMBUS, 43209	Unit 28505	Unit 28505 Left-Right		10 9/30/2021 9:14	OCCUPANCY	No	39.95773552	-82.918705
MRSJAGR	663 EASTMOOR BLVD COLUMBUS, 43209	Unit 28505	Unit 28505 Left-Right		10 9/30/2021 9:14	OCCUPANCY	No	39.9576376	-82.918714
HQC3429	669 EASTMOOR BLVD COLUMBUS, 43209	Unit 28505	Unit 28505 Left-Right		10 9/30/2021 9:14	OCCUPANCY	No	39.95744569	-82.918726
DLOJ4U	603 EASTMOOR BLVD COLUMBUS, 43209	Unit 28505	Unit 28505 Left-Right		10 9/30/2021 9:14	OCCUPANCY	No	39.95879747	-82.918609
PIF6020	120 EASTMOOR BLVD COLUMBUS, 43209	Unit 28505	Unit 28505 Left-Right		10 9/30/2021 9:11	OCCUPANCY	No	39.96870144	-82.916824
135YJG	26 EASTMOOR BLVD COLUMBUS, 43209	Unit 28505	Unit 28505 Left-Right		10 9/30/2021 9:11	OCCUPANCY	No	39.97068496	-82.918994
FKZ2417	214 EASTMOOR BLVD COLUMBUS, 43209	Unit 28505	Unit 28505 Left-Right		10 9/30/2021 9:11	OCCUPANCY	No	39.96703952	-82.916424
JIES414	664 EASTMOOR BLVD COLUMBUS, 43209	Unit 28505	Unit 28505 Left-Right		10 9/30/2021 9:09	OCCUPANCY	No	39.95747952	-82.918617
GLX2793	654 EASTMOOR BLVD COLUMBUS, 43209	Unit 28505	Unit 28505 Left-Right		10 9/30/2021 9:09	OCCUPANCY	No	39.95754952	-82.918612
GSF8819	616 EASTMOOR BLVD COLUMBUS, 43209	Unit 28505	Unit 28505 Left-Right		10 9/30/2021 9:09	OCCUPANCY	No	39.95836952	-82.918154
1KMC	612 EASTMOOR BLVD COLUMBUS, 43209	Unit 28505	Unit 28505 Left-Right		10 9/30/2021 9:09	OCCUPANCY	No	39.95864952	-82.918515
FWA9785	606 EASTMOOR BLVD COLUMBUS, 43209	Unit 28505	Unit 28505 Left-Right		10 9/30/2021 9:09	OCCUPANCY	No	39.95884827	-82.918499
HWV5423	522 EASTMOOR BLVD COLUMBUS, 43209	Unit 28505	Unit 28505 Left-Right		10 9/30/2021 9:09	OCCUPANCY	No	39.96045952	-82.918346
FQY8895	206 EASTMOOR BLVD COLUMBUS, 43209	Unit 28505	Unit 28505 Left-Right		10 9/30/2021 9:11	OCCUPANCY	No	39.96714952	-82.916414
HWS9997	448 EASTMOOR BLVD COLUMBUS, 43209	Unit 28505	Unit 28505 Left-Right		10 9/30/2021 9:10	OCCUPANCY	No	39.96195017	-82.918193
FMD4914	490 EASTMOOR BLVD COLUMBUS, 43209	Unit 28505	Unit 28505 Left-Right		10 9/30/2021 9:10	OCCUPANCY	No	39.96106952	-82.918286
FMG9504	386 EASTMOOR BLVD COLUMBUS, 43209	Unit 28505	Unit 28505 Left-Right		10 9/30/2021 9:10	OCCUPANCY	No	39.96312391	-82.917877
HP19148	324 EASTMOOR BLVD COLUMBUS, 43209	Unit 28505	Unit 28505 Left-Right		10 9/30/2021 9:10	OCCUPANCY	No	39.96469952	-82.916625
HHL1216	324 EASTMOOR BLVD COLUMBUS, 43209	Unit 28505	Unit 28505 Left-Right		10 9/30/2021 9:10	OCCUPANCY	No	39.96478952	-82.916617
GUE7000	300 EASTMOOR BLVD COLUMBUS, 43209	Unit 28505	Unit 28505 Left-Right		10 9/30/2021 9:10	OCCUPANCY	No	39.96525952	-82.916577
HZB7359	272 EASTMOOR BLVD COLUMBUS, 43209	Unit 28505	Unit 28505 Left-Right		10 9/30/2021 9:10	OCCUPANCY	No	39.96584952	-82.916526
HP19120	240 EASTMOOR BLVD COLUMBUS, 43209	Unit 28505	Unit 28505 Left-Right		10 9/30/2021 9:11	OCCUPANCY	No	39.96659952	-82.916462
JIE4833	400 EASTMOOR BLVD COLUMBUS, 43209	Unit 28505	Unit 28505 Left-Right		10 9/30/2021 9:10	OCCUPANCY	No	39.96303661	-82.917945
DREAMS7	670 EASTMOOR BLVD COLUMBUS, 43209	Unit 28505	Unit 28505 Left-Right		10 9/30/2021 9:09	OCCUPANCY	No	39.9573085	-82.918623
1075	1069 EASTMOOR BLVD COLUMBUS, 43209	Unit 28505	Unit 28505 Left-Right		10 9/30/2021 9:16	No	No	39.94871729	-82.919293
HML4816	971 EASTMOOR BLVD COLUMBUS, 43209	Unit 28505	Unit 28505 Left-Right		10 9/30/2021 9:16	No	No	39.95052931	-82.918868
PIR4382	1049 EASTMOOR BLVD COLUMBUS, 43209	Unit 28505	Unit 28505 Left-Right		10 9/30/2021 9:16	No	No	39.94955677	-82.919015
JLW7966	1111 EASTMOOR BLVD COLUMBUS, 43209	Unit 28505	Unit 28505 Left-Right		10 9/30/2021 9:16	No	No	39.94774764	-82.919442
OVRTDOT	2878 E LIVINGSTON AVE COLUMBUS, 43209	Unit 28505	Unit 28505 Left-Right		10 9/30/2021 9:17	No	No	39.94717146	-82.919817
HDD3783	2685 E LIVINGSTON AVE COLUMBUS, 43209	Unit 28505	Unit 28505 Left-Right		10 9/30/2021 9:18	No	No	39.94742423	-82.925653
HJC5849	2585 E LIVINGSTON AVE COLUMBUS, 43209	Unit 28505	Unit 28505 Left-Right		10 9/30/2021 9:18	No	No	39.94753631	-82.927833
HWI1965	2575 E LIVINGSTON AVE COLUMBUS, 43209	Unit 28505	Unit 28505 Left-Right		10 9/30/2021 9:18	No	No	39.94754899	-82.928081
PHP8883	2575 E LIVINGSTON AVE COLUMBUS, 43209	Unit 28505	Unit 28505 Left-Right		10 9/30/2021 9:18	No	No	39.94754899	-82.928081
HZB7461	2300 E LIVINGSTON AVE COLUMBUS, 43209	Unit 28505	Unit 28505 Left-Right		10 9/30/2021 9:19	No	No	39.94797949	-82.935792
GBA4730	2300 E LIVINGSTON AVE COLUMBUS, 43209	Unit 28505	Unit 28505 Left-Right		10 9/30/2021 9:19	No	No	39.94798115	-82.935962
DZW9050	2260 E LIVINGSTON AVE COLUMBUS, 43209	Unit 28505	Unit 28505 Left-Right		10 9/30/2021 9:19	No	No	39.94801298	-82.936685
PJP2934	2875 E LIVINGSTON AVE COLUMBUS, 43209	Unit 28505	Unit 28505 Left-Right		10 9/30/2021 9:17	No	No	39.94711548	-82.919944
GMQ4038	2263 E LIVINGSTON AVE COLUMBUS, 43209	Unit 28505	Unit 28505 Left-Right		10 9/30/2021 9:19	No	No	39.94803173	-82.937064
HPY8264	2201 E LIVINGSTON AVE COLUMBUS, 43209	Unit 28505	Unit 28505 Left-Right		10 9/30/2021 9:19	No	No	39.9480824	-82.938024
HHT7230	2167 E LIVINGSTON AVE COLUMBUS, 43209	Unit 28505	Unit 28505 Left-Right		10 9/30/2021 9:19	No	No	39.94814615	-82.939442
GVR5314	2131 E LIVINGSTON AVE COLUMBUS, 43209	Unit 28505	Unit 28505 Left-Right		10 9/30/2021 9:20	No	No	39.94817365	-82.940072
GMU2744	2103 E LIVINGSTON AVE COLUMBUS, 43209	Unit 28505	Unit 28505 Left-Right		10 9/30/2021 9:20	No	No	39.94821048	-82.940905
HUQ1825	1971 E LIVINGSTON AVE COLUMBUS, 43209	Unit 28505	Unit 28505 Left-Right		10 9/30/2021 9:20	No	No	39.94835798	-82.943886
GS43474	1971 E LIVINGSTON AVE COLUMBUS, 43209	Unit 28505	Unit 28505 Left-Right		10 9/30/2021 9:20	No	No	39.94837798	-82.944245
HXJ2033	1971 E LIVINGSTON AVE COLUMBUS, 43209	Unit 28505	Unit 28505 Left-Right		10 9/30/2021 9:20	No	No	39.94838798	-82.944425
HYH1988	2253 E LIVINGSTON AVE COLUMBUS, 43209	Unit 28505	Unit 28505 Left-Right		10 9/30/2021 9:19	No	No	39.94807298	-82.937826
JBS8395	2882 E LIVINGSTON AVE COLUMBUS, 43209	Unit 28505	Unit 28505 Left-Right		10 9/30/2021 9:17	No	No	39.94714573	-82.919551
GP255Q	2875 E LIVINGSTON AVE COLUMBUS, 43209	Unit 28505	Unit 28505 Left-Right		10 9/30/2021 9:17	No	No	39.94708755	-82.919541
JBS8395	1117 EASTMOOR BLVD COLUMBUS, 43209	Unit 28505	Unit 28505 Left-Right		10 9/30/2021 9:17	No	No	39.94714083	-82.919469
FWE3348	2664 E LIVINGSTON AVE BEXLEY, 43209	Unit 28505	Unit 28505 Left-Right		10 9/30/2021 9:18	No	No	39.94748771	-82.925647
JLP8009	2590 E LIVINGSTON AVE BEXLEY, 43209	Unit 28505	Unit 28505 Left-Right		10 9/30/2021 9:18	No	No	39.94759619	-82.927677
HZT3249	2590 E LIVINGSTON AVE BEXLEY, 43209	Unit 28505	Unit 28505 Left-Right		10 9/30/2021 9:18	No	No	39.94759979	-82.927828
FWE3348	2584 E LIVINGSTON AVE BEXLEY, 43209	Unit 28505	Unit 28505 Left-Right		10 9/30/2021 9:18	No	No	39.94761246	-82.928075
H2673	2554 E LIVINGSTON AVE BEXLEY, 43209	Unit 28505	Unit 28505 Left-Right		10 9/30/2021 9:19	No	No	39.94766146	-82.928757
GXP5831	2316 E LIVINGSTON AVE BEXLEY, 43209	Unit 28505	Unit 28505 Left-Right		10 9/30/2021 9:19	No	No	39.94803072	-82.935608
	52673 2130 E LIVINGSTON AVE BEXLEY, 43209	Unit 28505	Unit 28505 Left-Right		10 9/30/2021 9:20	No	No	39.94825468	-82.940409
GXP5949	1117 EASTMOOR BLVD COLUMBUS, 43209	Unit 28505	Unit 28505 Left-Right		10 9/30/2021 9:17	No	No	39.9471325	-82.919462
FWE3348	2032 E LIVINGSTON AVE COLUMBUS, 43209	Unit 28505	Unit 28505 Left-Right		10 9/30/2021 9:20	No	No	39.94836646	-82.94273
HCU7285	RHOADS AVE COLUMBUS, 43206	Unit 28505	Unit 28505 Left-Right		10 9/30/2021 9:20	No	No	39.94829393	-82.949476
GSR4749	955 EASTMOOR BLVD COLUMBUS, 43209	Unit 28505	Unit 28505 Left-Right		10 9/30/2021 9:16	No	No	39.95129685	-82.918718
GOW8466	1062 EASTMOOR BLVD COLUMBUS, 43209	Unit 28505	Unit 28505 Left-Right		10 9/30/2021 9:16	No	No	39.94912028	-82.919067
GEP3305	1120 EASTMOOR BLVD COLUMBUS, 43209	Unit 28505	Unit 28505 Left-Right		10 9/30/2021 9:16	No	No	39.94755126	-82.919389
PKP7085	1117 EASTMOOR BLVD COLUMBUS, 43209	Unit 28505	Unit 28505 Left-Right		10 9/30/2021 9:17	No	No	39.94721483	-82.919466
ESQ4586	1117 EASTMOOR BLVD COLUMBUS, 43209	Unit 28505	Unit 28505 Left-Right		10 9/30/2021 9:17	No	No	39.94721483	-82.919466
GTM3107	1117 EASTMOOR BLVD COLUMBUS, 43209	Unit 28505	Unit 28505 Left-Right		10 9/30/2021 9:17	No	No	39.94714244	-82.919467
JJVE610	RHOADS AVE COLUMBUS, 43206	Unit 28505	Unit 28505 Left-Right		10 9/30/2021 9:20	No	No	39.94837704	-82.949475
JVW8209	1937 E LIVINGSTON AVE COLUMBUS, 43209	Unit 28505	Unit 28505 Left-Right		10 9/30/2021 9:20	No	No	39.94846615	-82.945945

9/30/2021 8pm

Plate read	Address	Patroller	LPR unit	User	Event timestamp	Rule	Manual capture	Latitude	Longitude
GZM7362	100 EASTMOOR BLVD COLUMBUS, 43209	Unit 28505	Unit 28505 Left-Right		1 9/30/2021 20:17	OCCUPANCY	No	39.96947419	-82.917429
JML8567	669 EASTMOOR BLVD COLUMBUS, 43209	Unit 28505	Unit 28505 Left-Right		1 9/30/2021 20:15	OCCUPANCY	No	39.95739504	-82.918726
HNN1946	633 EASTMOOR BLVD COLUMBUS, 43209	Unit 28505	Unit 28505 Left-Right		1 9/30/2021 20:15	OCCUPANCY	No	39.95794415	-82.918668
VETAE	627 EASTMOOR BLVD COLUMBUS, 43209	Unit 28505	Unit 28505 Left-Right		1 9/30/2021 20:15	OCCUPANCY	No	39.95820404	-82.918699
FCA5076	615 EASTMOOR BLVD COLUMBUS, 43209	Unit 28505	Unit 28505 Left-Right		1 9/30/2021 20:14	OCCUPANCY	No	39.958508	-82.918628
FDL0540	603 EASTMOOR BLVD COLUMBUS, 43209	Unit 28505	Unit 28505 Left-Right		1 9/30/2021 20:14	OCCUPANCY	No	39.95878837	-82.918594
1KMC	587 EASTMOOR BLVD COLUMBUS, 43209	Unit 28505	Unit 28505 Left-Right		1 9/30/2021 20:14	OCCUPANCY	No	39.95889699	-82.918585
DTB5936	575 EASTMOOR BLVD COLUMBUS, 43209	Unit 28505	Unit 28505 Left-Right		1 9/30/2021 20:14	OCCUPANCY	No	39.95918487	-82.918575
GVP3485	541 EASTMOOR BLVD COLUMBUS, 43209	Unit 28505	Unit 28505 Left-Right		1 9/30/2021 20:14	OCCUPANCY	No	39.96015692	-82.918463
HDB9562	487 EASTMOOR BLVD COLUMBUS, 43209	Unit 28505	Unit 28505 Left-Right		1 9/30/2021 20:14	OCCUPANCY	No	39.96113812	-82.918367
HAS7607	485 EASTMOOR BLVD COLUMBUS, 43209	Unit 28505	Unit 28505 Left-Right		1 9/30/2021 20:14	OCCUPANCY	No	39.96126982	-82.918368
GSW6332	485 EASTMOOR BLVD COLUMBUS, 43209	Unit 28505	Unit 28505 Left-Right		1 9/30/2021 20:14	OCCUPANCY	No	39.96132449	-82.918379
JKU8622	463 EASTMOOR BLVD COLUMBUS, 43209	Unit 28505	Unit 28505 Left-Right		1 9/30/2021 20:14	OCCUPANCY	No	39.96168643	-82.918317
JFM8189	457 EASTMOOR BLVD COLUMBUS, 43209	Unit 28505	Unit 28505 Left-Right		1 9/30/2021 20:14	OCCUPANCY	No	39.96175869	-82.918303
JMJ8485	455 EASTMOOR BLVD COLUMBUS, 43209	Unit 28505	Unit 28505 Left-Right		1 9/30/2021 20:14	OCCUPANCY	No	39.96184839	-82.918289
HBV4076	445 EASTMOOR BLVD COLUMBUS, 43209	Unit 28505	Unit 28505 Left-Right		1 9/30/2021 20:14	OCCUPANCY	No	39.96192858	-82.918281
JIE5147	445 EASTMOOR BLVD COLUMBUS, 43209	Unit 28505	Unit 28505 Left-Right		1 9/30/2021 20:14	OCCUPANCY	No	39.96210858	-82.918261
HWV5446	435 EASTMOOR BLVD COLUMBUS, 43209	Unit 28505	Unit 28505 Left-Right		1 9/30/2021 20:14	OCCUPANCY	No	39.96220733	-82.918225
GRJ6443	670 EASTMOOR BLVD COLUMBUS, 43209	Unit 28505	Unit 28505 Left-Right		1 9/30/2021 20:15	OCCUPANCY	No	39.95724971	-82.918639
GEP2602	435 EASTMOOR BLVD COLUMBUS, 43209	Unit 28505	Unit 28505 Left-Right		1 9/30/2021 20:14	OCCUPANCY	No	39.96220733	-82.918225
JIE5414	664 EASTMOOR BLVD COLUMBUS, 43209	Unit 28505	Unit 28505 Left-Right		1 9/30/2021 20:15	OCCUPANCY	No	39.95742827	-82.918623
GXY3492	612 EASTMOOR BLVD COLUMBUS, 43209	Unit 28505	Unit 28505 Left-Right		1 9/30/2021 20:15	OCCUPANCY	No	39.95865827	-82.918514
HRW9303	192 EASTMOOR BLVD COLUMBUS, 43209	Unit 28505	Unit 28505 Left-Right		1 9/30/2021 20:17	OCCUPANCY	No	39.96747009	-82.916389
G0M1563	222 EASTMOOR BLVD COLUMBUS, 43209	Unit 28505	Unit 28505 Left-Right		1 9/30/2021 20:17	OCCUPANCY	No	39.96682952	-82.916442
JIU4300	300 EASTMOOR BLVD COLUMBUS, 43209	Unit 28505	Unit 28505 Left-Right		1 9/30/2021 20:17	OCCUPANCY	No	39.96519077	-82.916583
GUE7000	300 EASTMOOR BLVD COLUMBUS, 43209	Unit 28505	Unit 28505 Left-Right		1 9/30/2021 20:17	OCCUPANCY	No	39.96519077	-82.916583
HHL1216	324 EASTMOOR BLVD COLUMBUS, 43209	Unit 28505	Unit 28505 Left-Right		1 9/30/2021 20:17	OCCUPANCY	No	39.96476077	-82.916619
HPJ9148	330 EASTMOOR BLVD COLUMBUS, 43209	Unit 28505	Unit 28505 Left-Right		1 9/30/2021 20:17	OCCUPANCY	No	39.96465077	-82.916629
FMG9504	386 EASTMOOR BLVD COLUMBUS, 43209	Unit 28505	Unit 28505 Left-Right		1 9/30/2021 20:16	OCCUPANCY	No	39.96313336	-82.917866
HAF5701	456 EASTMOOR BLVD COLUMBUS, 43209	Unit 28505	Unit 28505 Left-Right		1 9/30/2021 20:16	OCCUPANCY	No	39.96189017	-82.9182
SUPREMJ	464 EASTMOOR BLVD COLUMBUS, 43209	Unit 28505	Unit 28505 Left-Right		1 9/30/2021 20:16	OCCUPANCY	No	39.96171946	-82.918218
GRJ8926	468 EASTMOOR BLVD COLUMBUS, 43209	Unit 28505	Unit 28505 Left-Right		1 9/30/2021 20:16	OCCUPANCY	No	39.96165284	-82.918228
F0Y1493	468 EASTMOOR BLVD COLUMBUS, 43209	Unit 28505	Unit 28505 Left-Right		1 9/30/2021 20:16	OCCUPANCY	No	39.96165284	-82.918228
FMD4914	490 EASTMOOR BLVD COLUMBUS, 43209	Unit 28505	Unit 28505 Left-Right		1 9/30/2021 20:16	OCCUPANCY	No	39.96107952	-82.918284
HWQ3081	504 EASTMOOR BLVD COLUMBUS, 43209	Unit 28505	Unit 28505 Left-Right		1 9/30/2021 20:16	OCCUPANCY	No	39.96098952	-82.918294
HWV5423	522 EASTMOOR BLVD COLUMBUS, 43209	Unit 28505	Unit 28505 Left-Right		1 9/30/2021 20:16	OCCUPANCY	No	39.96046827	-82.918345
GGZ5810	542 EASTMOOR BLVD COLUMBUS, 43209	Unit 28505	Unit 28505 Left-Right		1 9/30/2021 20:16	OCCUPANCY	No	39.96015952	-82.918376
FWA9785	606 EASTMOOR BLVD COLUMBUS, 43209	Unit 28505	Unit 28505 Left-Right		1 9/30/2021 20:15	OCCUPANCY	No	39.95884827	-82.918499
669YQV	606 EASTMOOR BLVD COLUMBUS, 43209	Unit 28505	Unit 28505 Left-Right		1 9/30/2021 20:15	OCCUPANCY	No	39.95875827	-82.918505
GLX2793	664 EASTMOOR BLVD COLUMBUS, 43209	Unit 28505	Unit 28505 Left-Right		1 9/30/2021 20:15	OCCUPANCY	No	39.95749952	-82.918615
HSW4209	207 EASTMOOR BLVD COLUMBUS, 43209	Unit 28505	Unit 28505 Left-Right		1 9/30/2021 20:13	OCCUPANCY	No	39.96715923	-82.916498