

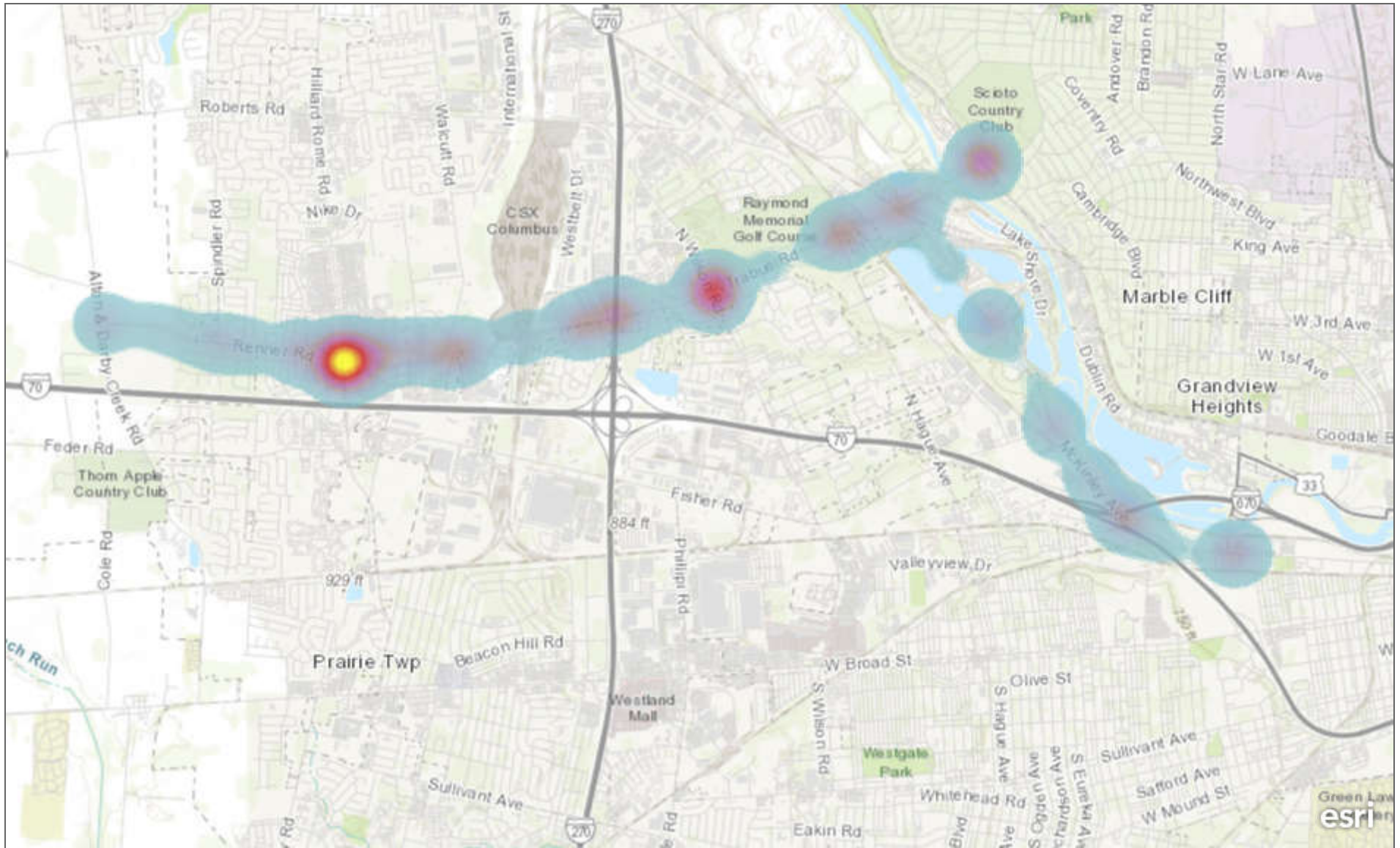
Appendix E

Crash History



All Crash Data Heat Maps

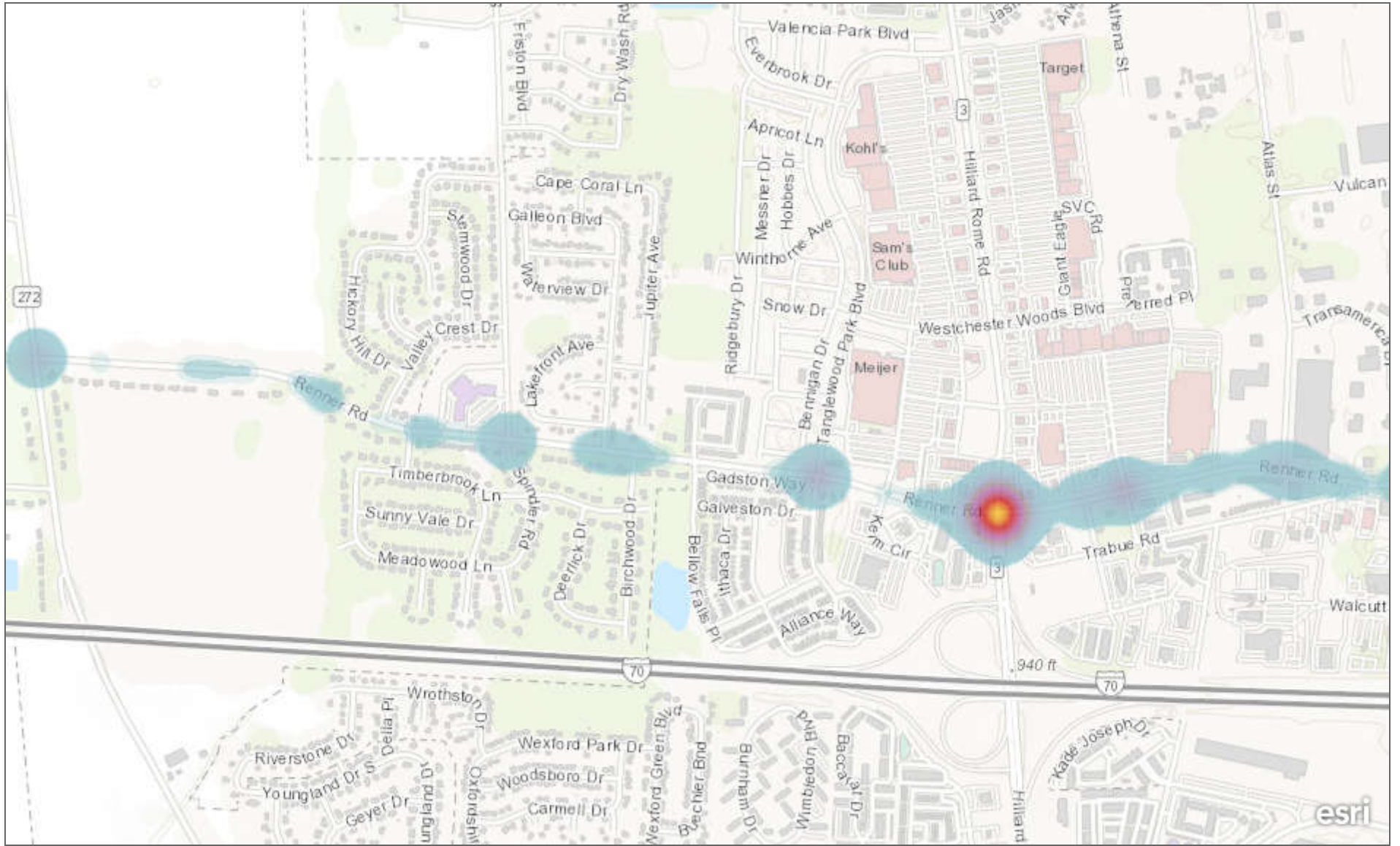
RTMC Crash Data Heat Maps - All Crashes



1mi

Franklin County Auditor, Esri, HERE, Garmin, INCREMENT P, USGS, METI/NASA, NGA, EPA, USDA

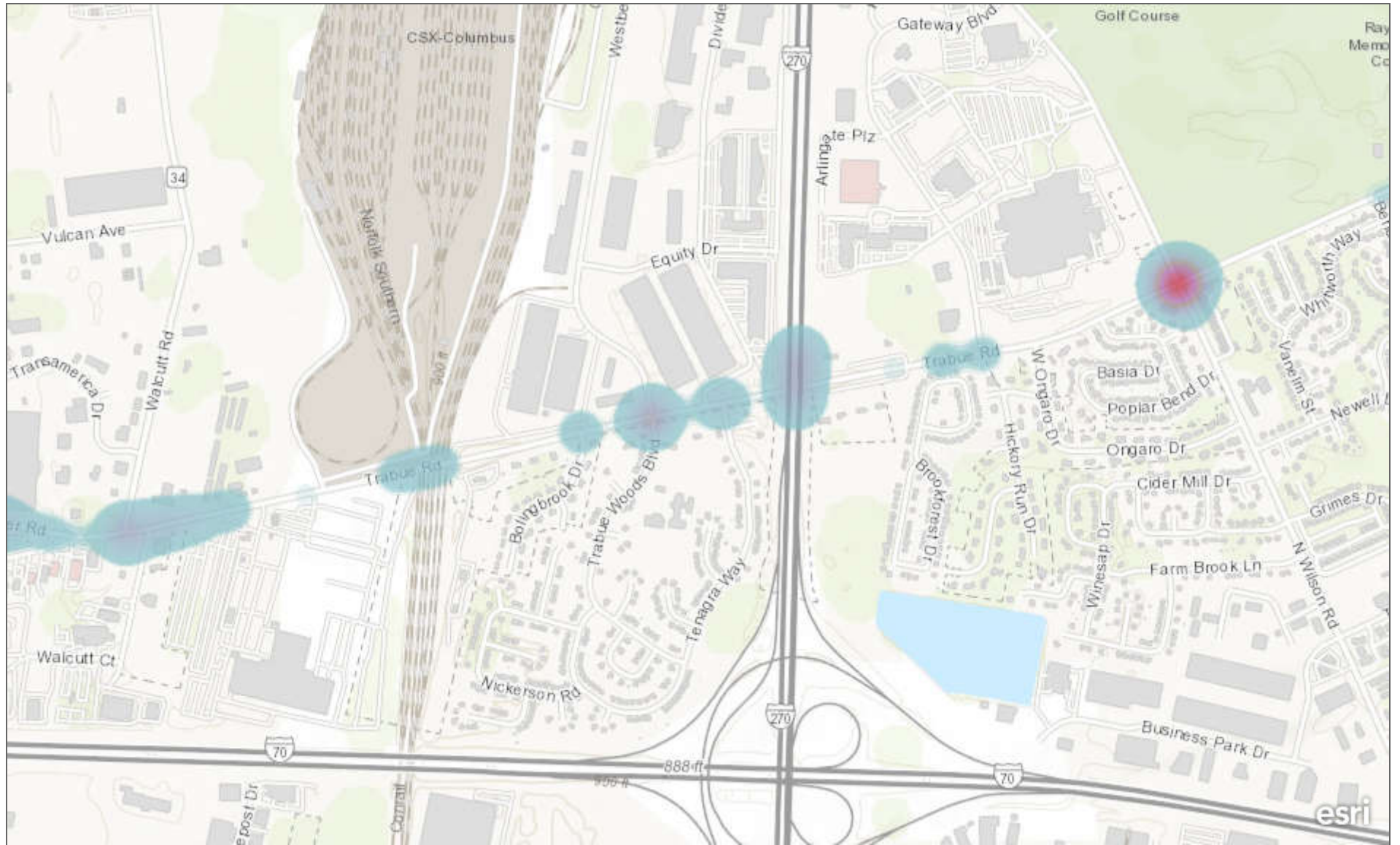
RTMC Crash Data Heat Maps - All Crashes



0.2mi

Franklin County Auditor, Esri, HERE, Garmin, INCREMENT P, USGS, METI/NASA, EPA, USDA

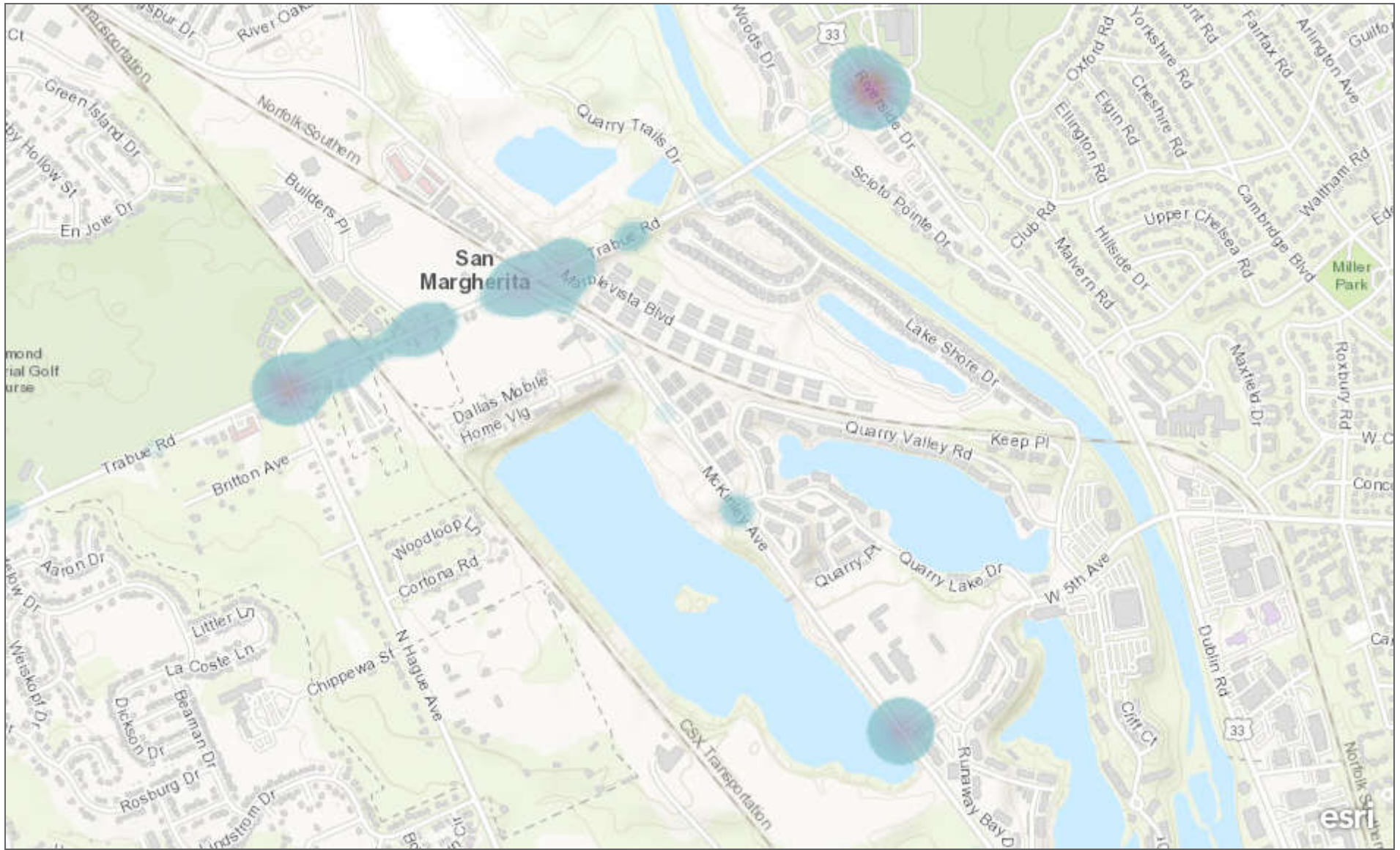
RTMC Crash Data Heat Maps - All Crashes



0.2mi

Franklin County Auditor, Esri, HERE, Garmin, INCREMENT P, USGS, METI/NASA, EPA, USDA

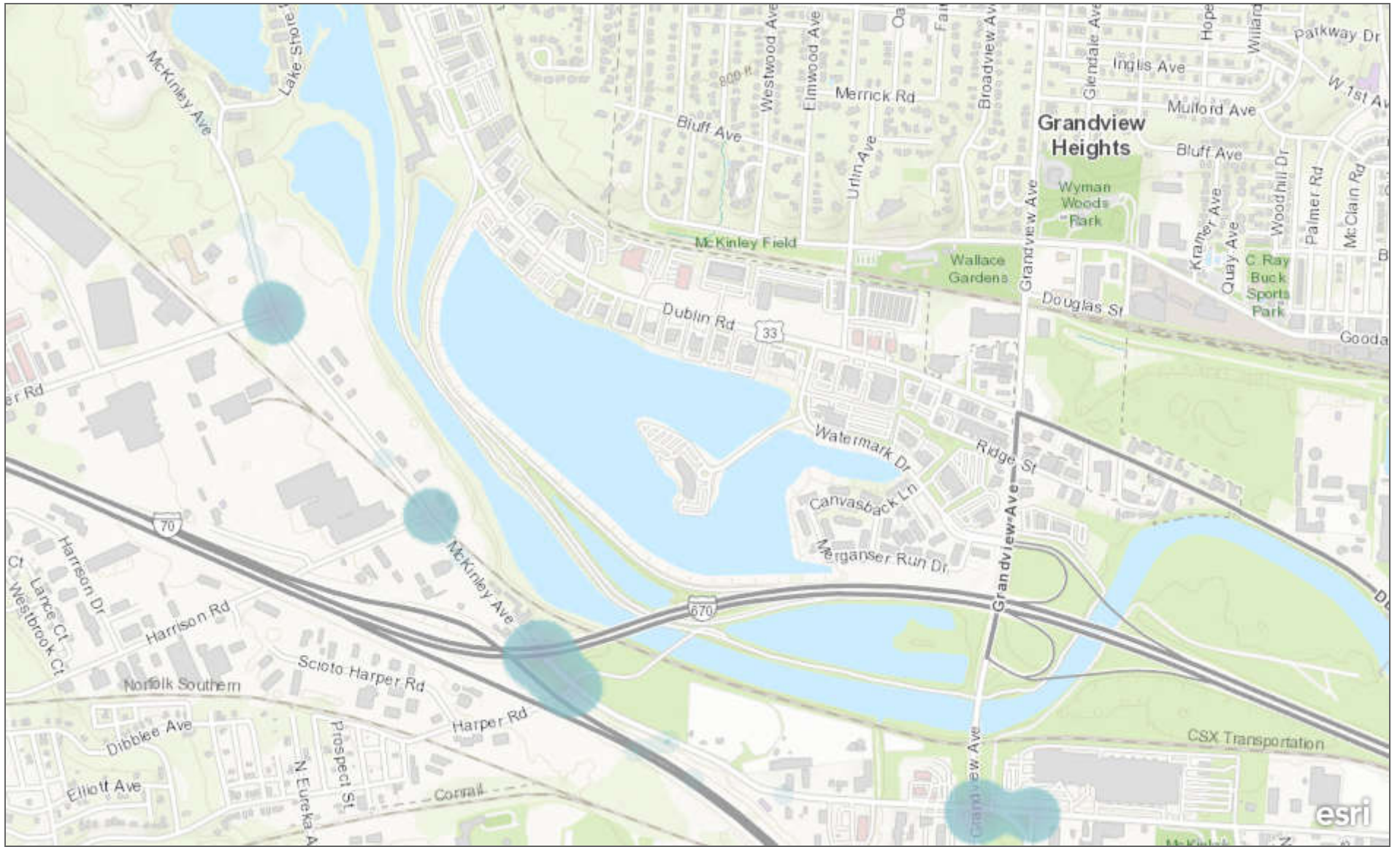
RTMC Crash Data Heat Maps - All Crashes



0.2mi

Franklin County Auditor, Esri, HERE, Garmin, INCREMENT P, USGS, METI/NASA, EPA, USDA

RTMC Crash Data Heat Maps - All Crashes

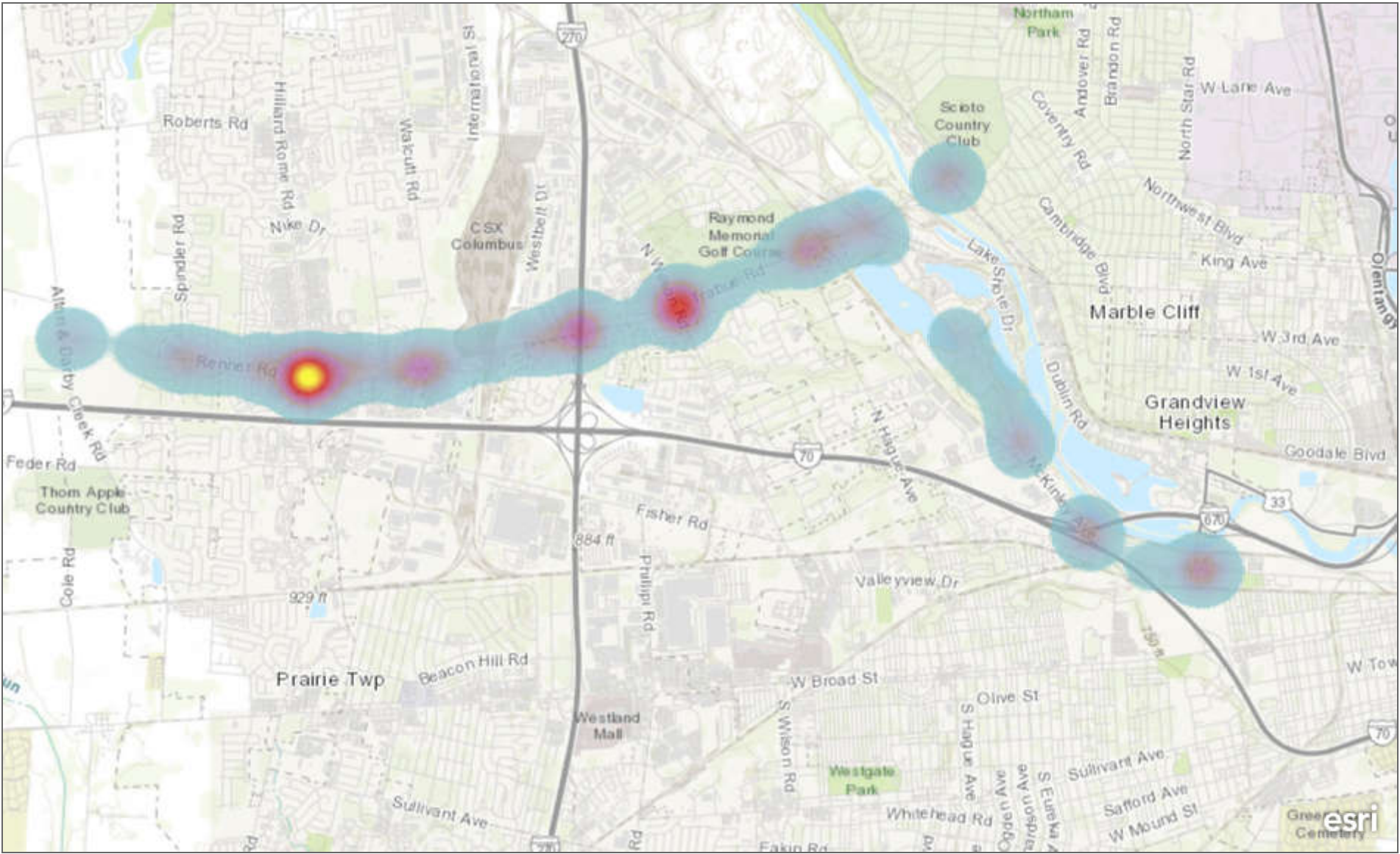


0.2mi

City of Grandview Heights, Franklin County Auditor, Esri, HERE, Garmin, INCREMENT P, USGS, METI/NASA, EPA, USDA

Injury and Fatal Crash Data Heat Maps

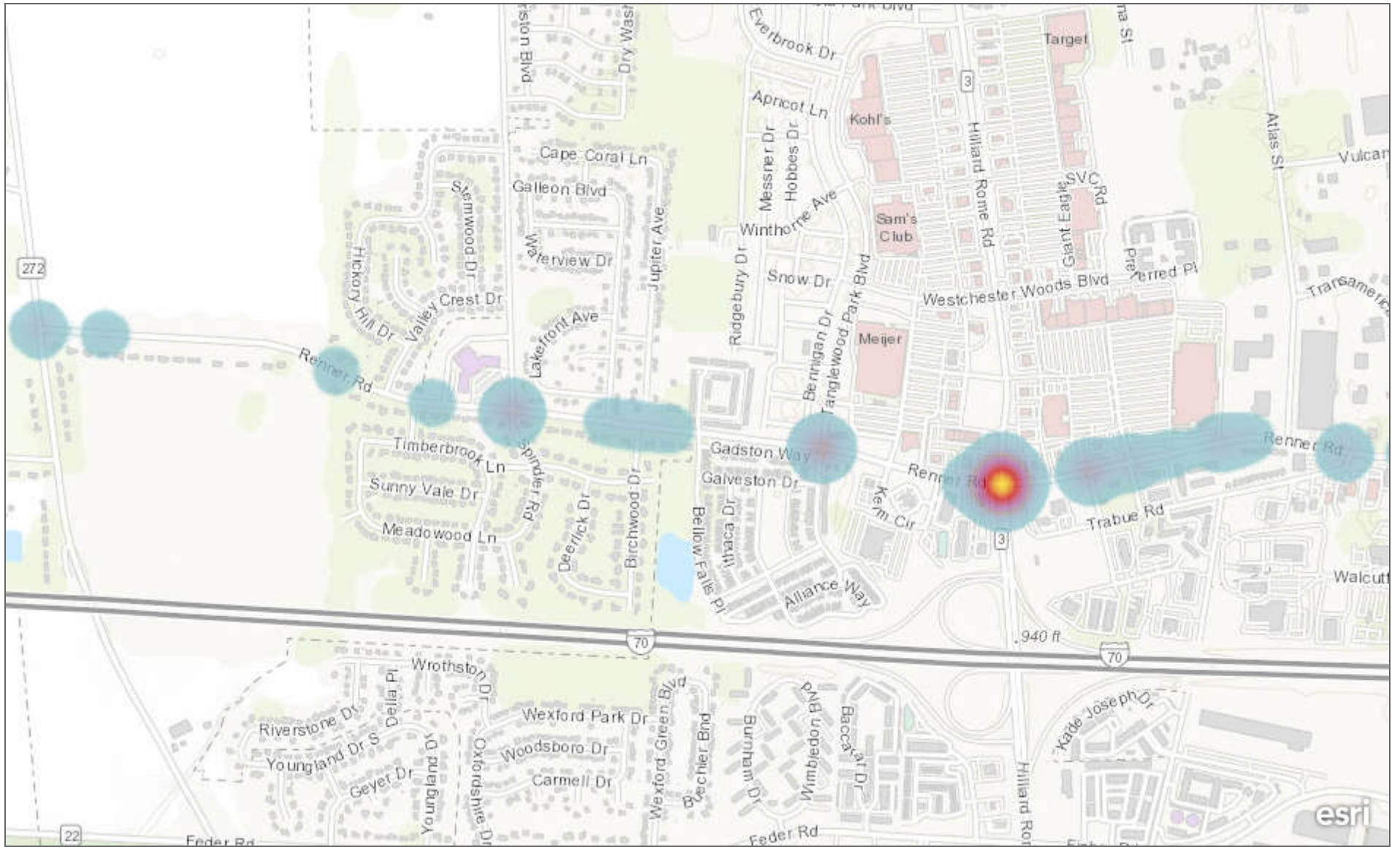
RTMC Crash Data Heat Maps - Injury and Fatal Crashes



1mi

Franklin County Auditor, Esri, HERE, Garmin, INCREMENT P, USGS, METI/NASA, NGA, EPA, USDA

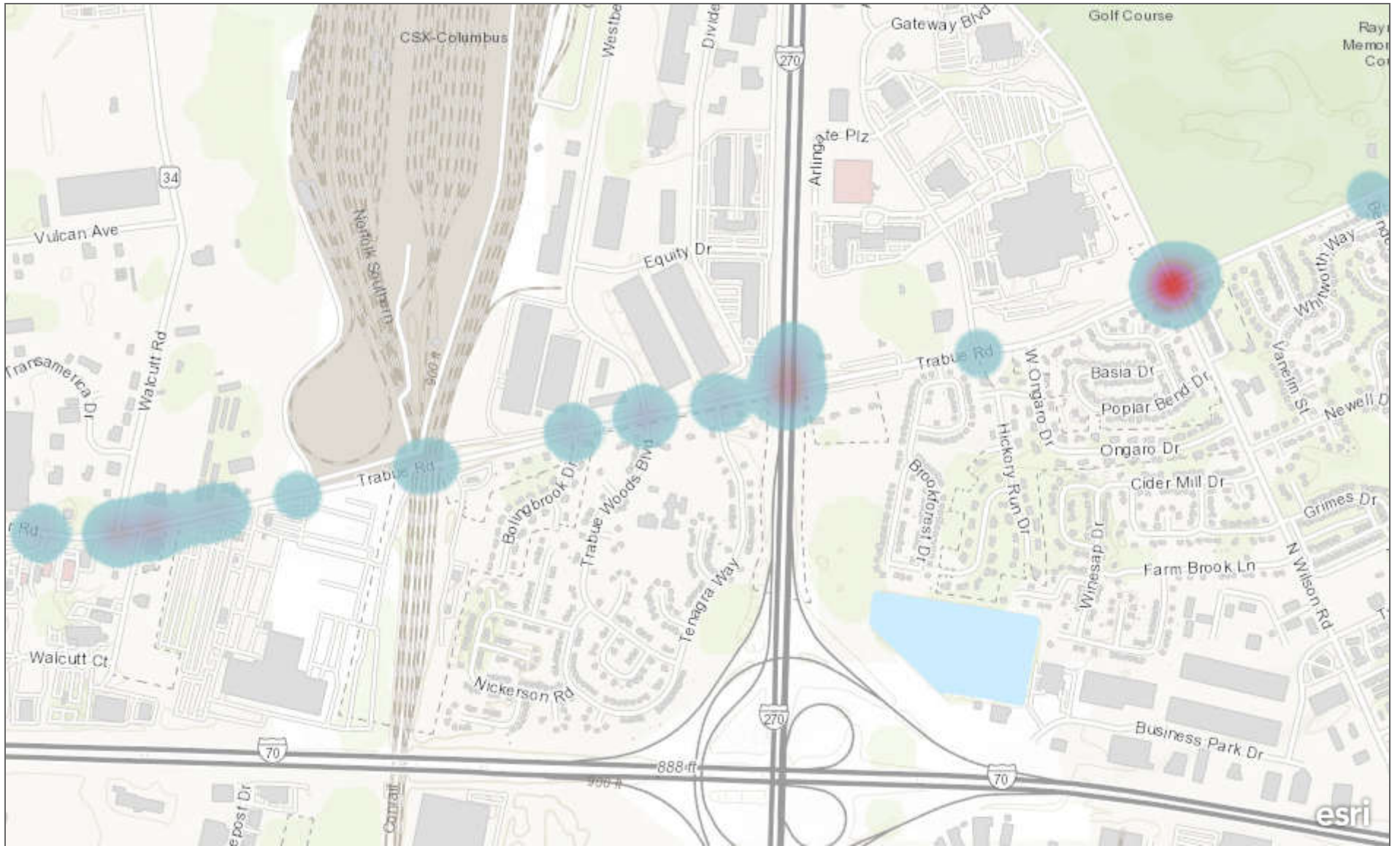
RTMC Crash Data Heat Maps - Injury and Fatal Crashes



0.2mi

Franklin County Auditor, Esri, HERE, Garmin, INCREMENT P, USGS, METI/NASA, EPA, USDA

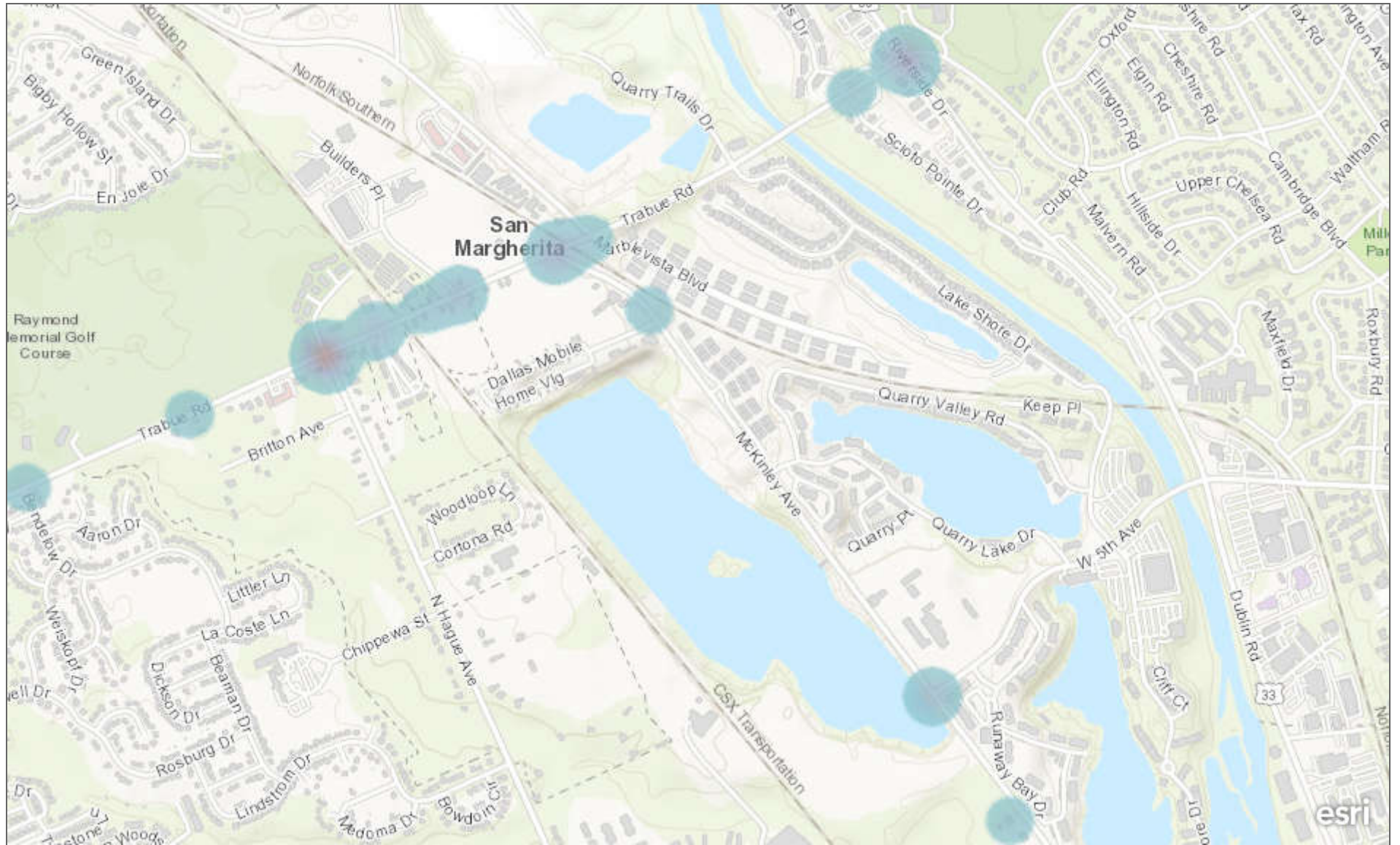
RTMC Crash Data Heat Maps - Injury and Fatal Crashes



0.2mi

Franklin County Auditor, Esri, HERE, Garmin, INCREMENT P, USGS, METI/NASA, EPA, USDA

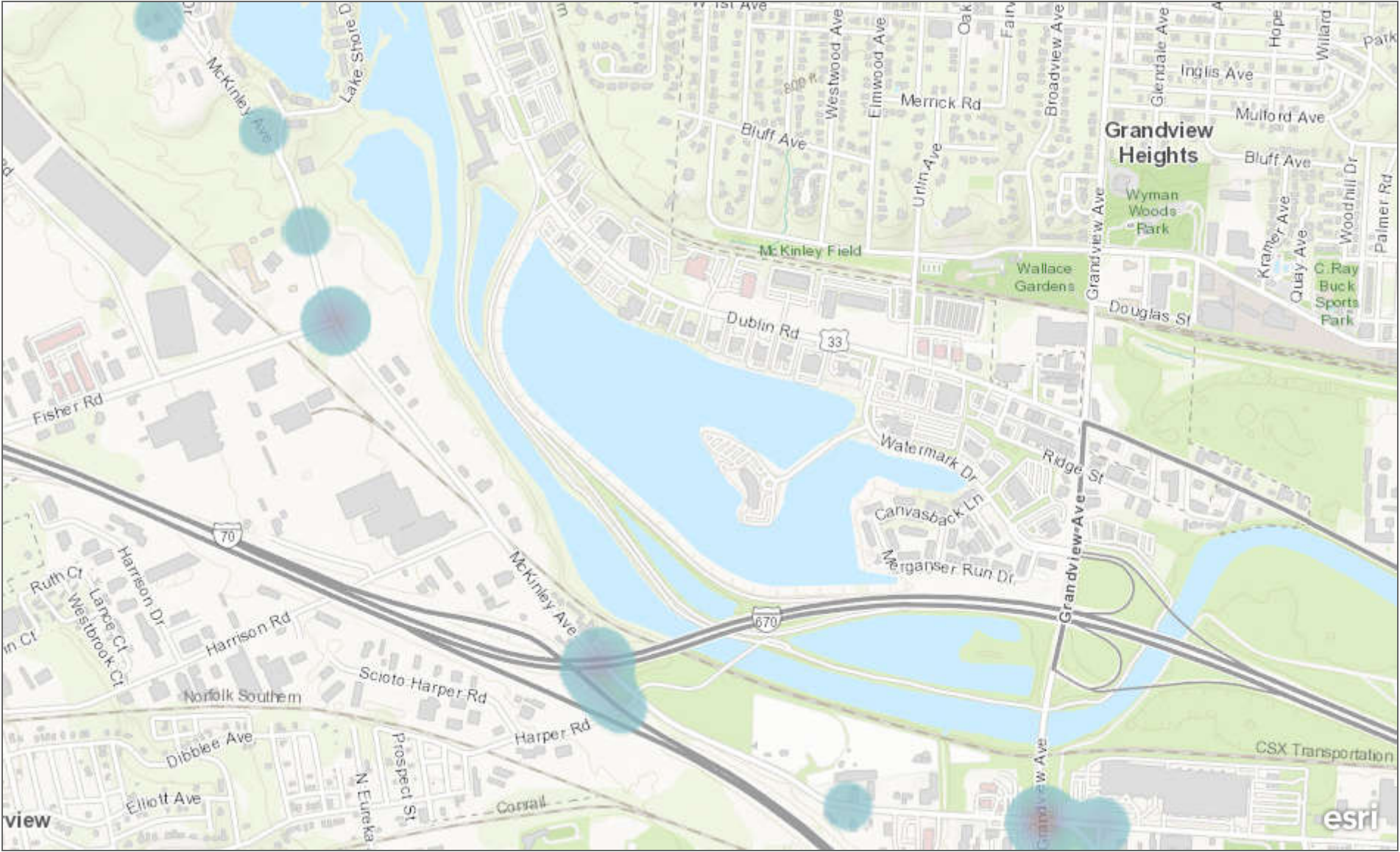
RTMC Crash Data Heat Maps - Injury and Fatal Crashes



0.2mi

Franklin County Auditor, Esri, HERE, Garmin, INCREMENT P, USGS, METI/NASA, EPA, USDA

RTMC Crash Data Heat Maps - Injury and Fatal Crashes

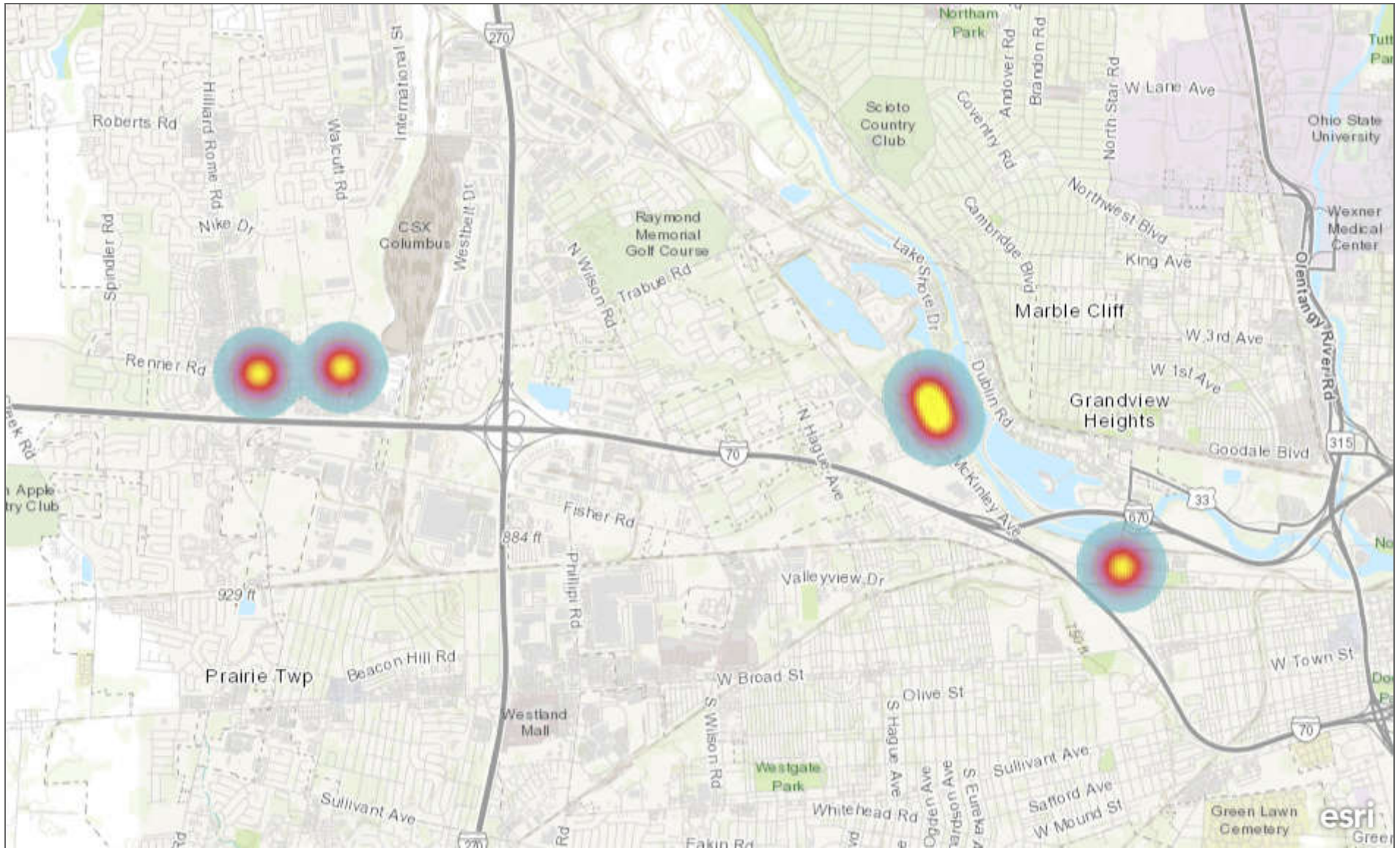


0.2mi

City of Grandview Heights, Franklin County Auditor, Esri, HERE, Garmin, INCREMENT P, USGS, METI/NASA, EPA, USDA

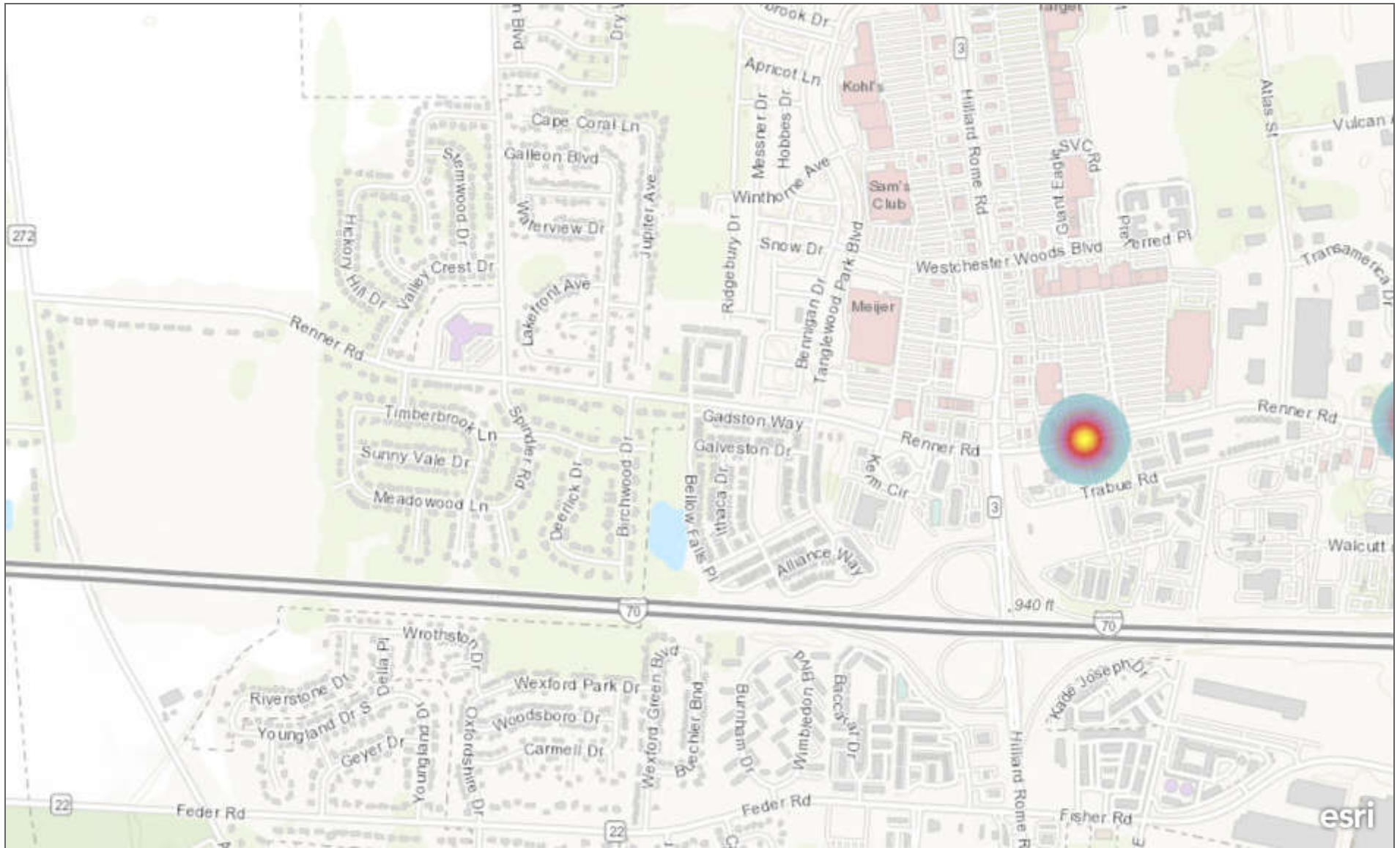
Pedestrian and Bicycle Crash Data Heat Maps

RTMC Crash Data Heat Maps - Pedestrian and Bike Crashes



Franklin County Auditor, Esri, HERE, Garmin, INCREMENT P, USGS, METI/NASA, NGA, EPA, USDA

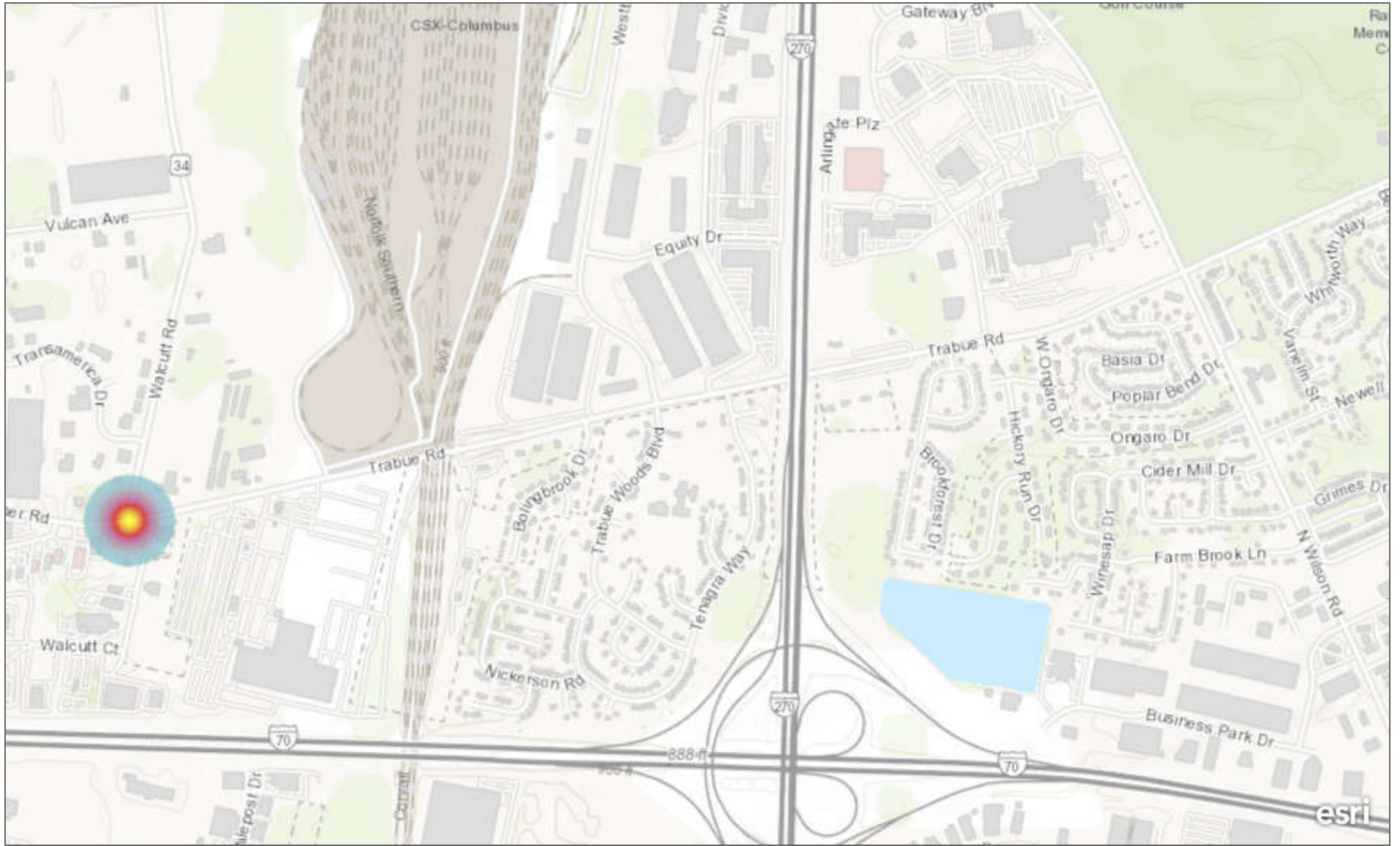
RTMC Crash Data Heat Maps - Pedestrian and Bike Crashes



0.2mi

Franklin County Auditor, Esri, HERE, Garmin, INCREMENT P, USGS, METI/NASA, EPA, USDA

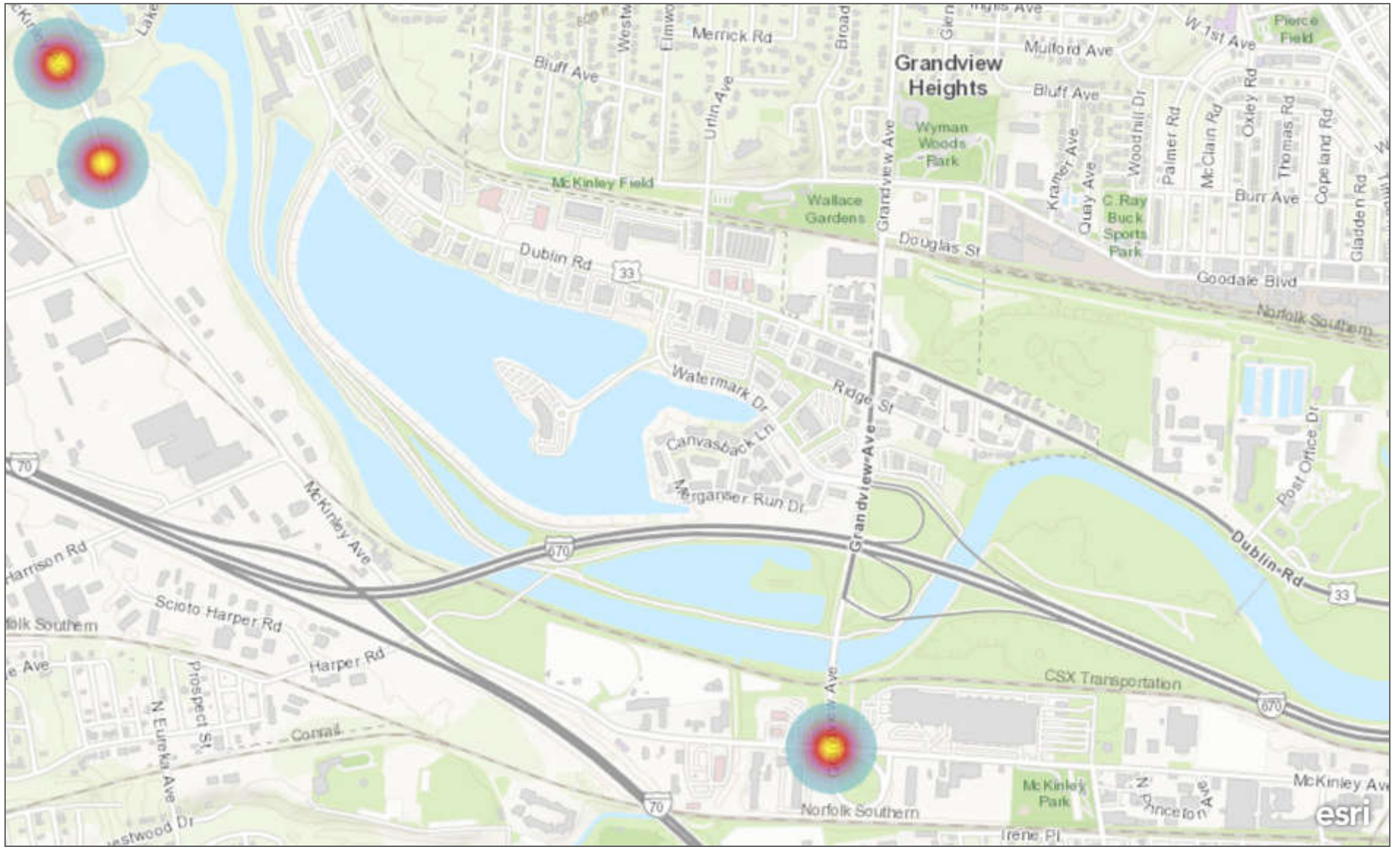
RTMC Crash Data Heat Maps - Pedestrian and Bike Crashes



0.2mi

Franklin County Auditor, Esri, HERE, Garmin, INCREMENT P, USGS, METI/NASA, EPA, USDA

RTMC Crash Data Heat Maps - Pedestrian and Bike Crashes



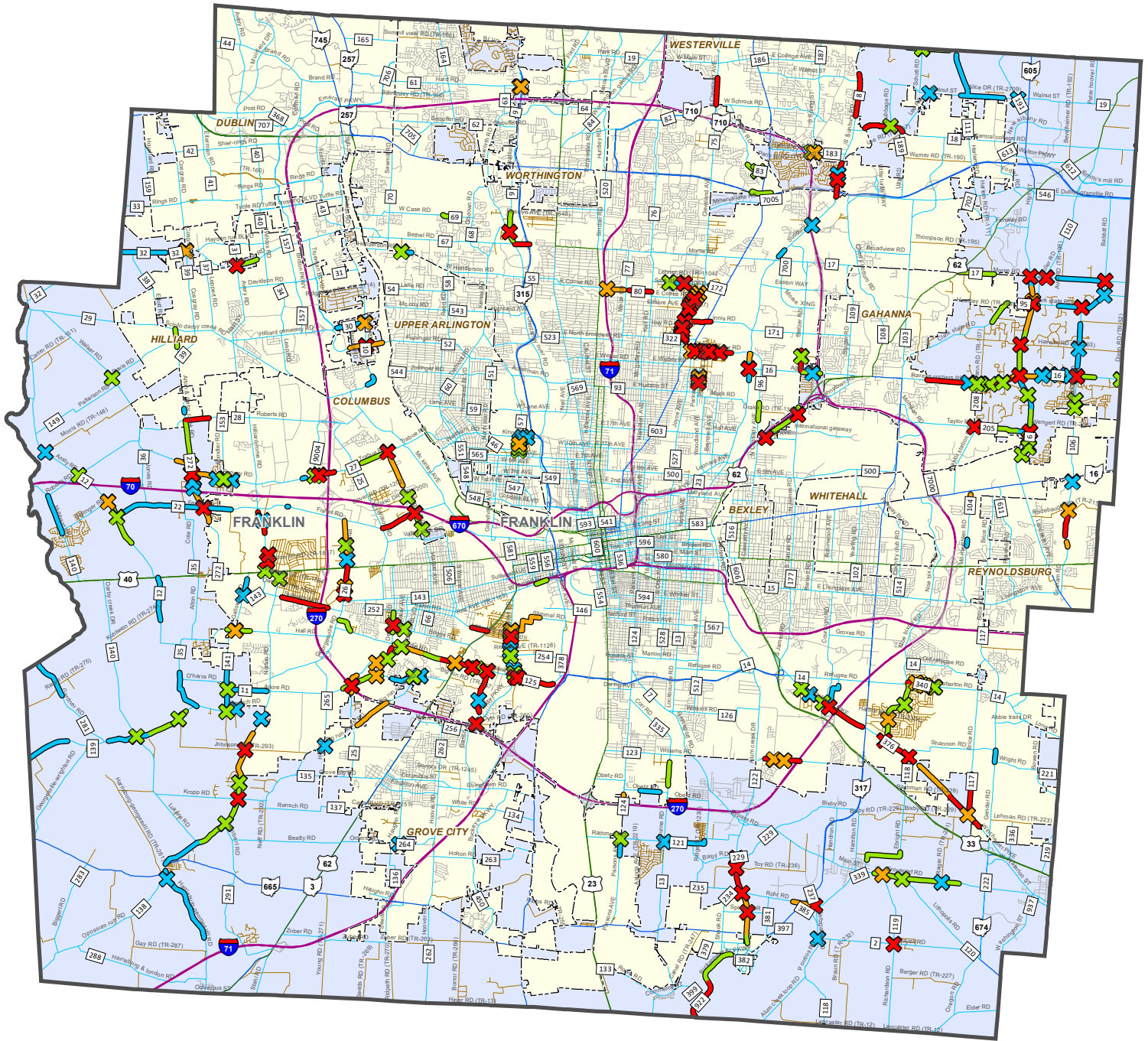
0.2mi

City of Grandview Heights, Franklin County Auditor, Esri, HERE, Garmin, INCREMENT P, USGS, METI/NASA, EPA, USDA

High Crash Location Research

2020 County Road High Crash Locations

Franklin County



*2015-2019 Crash Data Used



OHIO DEPARTMENT OF
TRANSPORTATION
Division of Planning
Office of Program
Management

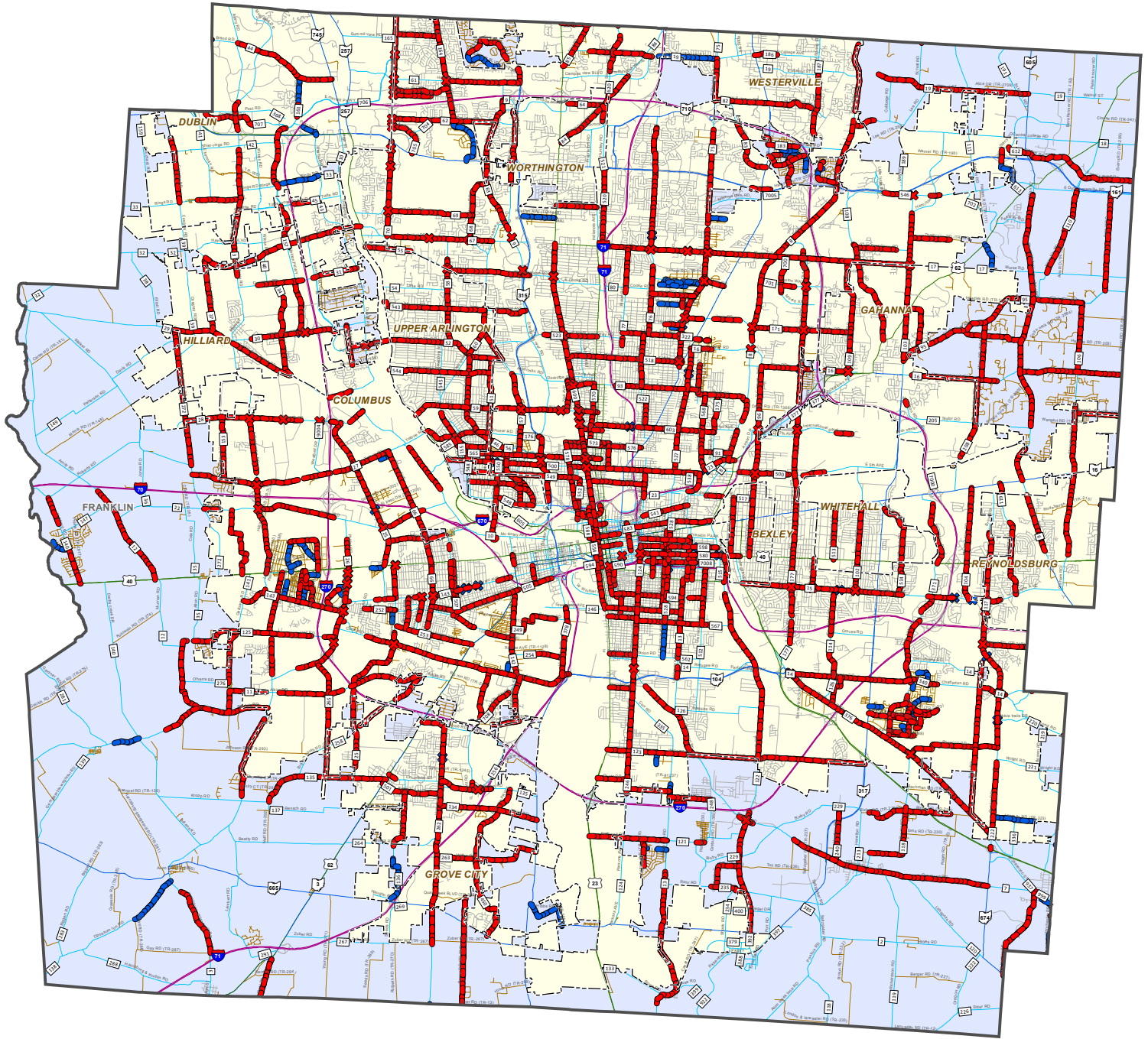
Intersection Crashes Segment Crashes Roads by Type

- | | | |
|---|---|--|
| <ul style="list-style-type: none"> ✕ 5 - 6 ✕ 7 - 10 ✕ 11 - 15 ✕ > 15 | <ul style="list-style-type: none"> — 5 - 6 — 7 - 10 — 11 - 15 — > 15 | <ul style="list-style-type: none"> — Other Routes — Interstate Route — United States Route — State Route — County Road — Township Road |
|---|---|--|
- City Boundary

Date: 7/24/2020

SFY2015 Safety Integrated Project Maps - Local System

Franklin County



High Priority

- ✘ Intersections/Interchanges
- Segments

Low Cost Improvements

- ✘ Intersections/Interchanges
- Segments

— Other Routes

Roads by Type

- Interstate Route
- United States Route
- State Route
- County Road
- Township Road



OHIO DEPARTMENT OF
TRANSPORTATION
Division of Planning
Office of Program
Management

TOP 100 REGIONAL HIGH-CRASH INTERSECTIONS (2015 TO 2017)

RANK	LOCATION	JURISDICTION	TOTAL CRASHES (FREQ.)	CRASH SEVERITY					SEVERITY (EPDO)	AVERAGE DAILY TRAFFIC (ADT)	CRASH RATE (MEV RATE)	CRITERIA RANKINGS			ANNUAL CRASHES			PRIOR RANK	COMMENTS
				Fatal Injury	Serious Injury	Minor Injury	Possible Injury	PDO				Freq.	EPDO	MEV	2015	2016	2017		
1	Dublin Granville Rd / SR 161 @ Maple Canyon Dr	Columbus	157	-	5	20	18	114	3.32	36,700	3.91	10	31	6	52	59	46	14	Corridor study is complete. No funding identified for design or construction, however funding is actively being pursued.
2	Broad St / SR 16 @ James Rd	Columbus	179	1	4	23	20	131	3.17	51,500	3.17	6	33	15	63	63	53	2	LED signals and backplates were added in 2016. Safety study completed in 2018.
3	E Livingston Ave @ Hamilton Rd / SR 317	Columbus	188	1	3	24	25	135	2.98	37,600	4.57	5	48	3	59	70	59	1	Columbus conducted safety study in 2014. LED signals and backplates were added in 2016. ODOT awarded safety funding. The project is currently in construction.
4	Morse Rd @ Karl Rd	Columbus	160	-	2	38	15	105	3.12	44,900	3.25	9	35	14	61	48	51	4	Traffic signal retimed in 2017.
5	Hilliard Rome Rd @ Renner Rd	Columbus	157	1	5	25	12	114	3.61	53,000	2.71	10	17	36	54	51	52	22	Project for improvements at this intersection were part of the I-270 interchange project constructed in 2014.
6	Frank Rd / SR 104 / Refugee Rd @ Winchester Pike	Columbus	144	-	3	20	18	103	3.00	38,600	3.41	15	46	12	59	42	43	16	ODOT award safety funding. Project for improvements currently in design and construction is anticipated to begin in the summer of 2019.
7	Cleveland Ave @ Dublin Granville Rd / SR 161	Columbus	213	-	3	32	27	151	2.81	53,500	3.64	3	63	9	79	76	58	6	Corridor study is complete. LED signals and backplates were added in 2016. ODOT awarded safety funding for north service road project. Construction is anticipated to begin in the fall of 2019.
8	Broad St / SR 16 @ Lancaster Ave / Reynoldsburg-New Albany Rd	Columbus	157	-	5	23	16	113	3.38	57,200	2.51	10	24	42	65	46	46	5	A safety study was completed in 2018. The City of Columbus is currently evaluating recommendations from the study. E Broad Corridor study completed in 2009. No funding identified for design or construction.
9	E Livingston Ave @ Brice Rd	Reynoldsburg	131	-	3	12	19	97	2.88	34,200	3.50	20	57	10	32	54	45	49	
10	Cleveland Ave @ Innis Rd	Franklin County	110	-	3	3	25	79	2.98	25,200	3.99	33	49	5	41	34	35	3	
11	E Main St / US 40 @ McNaughten Rd	Columbus	150	-	2	26	25	97	3.05	51,600	2.65	13	41	38	58	46	46	12	ODOT awarded safety funding. Project is currently in design with construction anticipated to begin in 2019.
12	E Livingston Ave @ James Rd	Columbus	146	-	2	18	24	102	2.77	38,800	3.44	14	67	11	50	57	39	15	LED signal heads installed in 2009. Safety study completed in 2015. ODOT awarded safety funding. Project for improvements anticipated to begin construction in 2020.
13	Cleveland Ave / SR 3 @ E Hudson St	Columbus	101	-	2	20	14	65	3.33	29,700	3.11	46	30	17	30	35	36	10	A safety study of the intersection was completed in 2018.
14	E Livingston Ave / US 33 @ Alum Creek Dr	Columbus	125	-	4	14	18	89	3.34	45,300	2.52	25	29	40	49	38	38	9	Traffic signals upgraded to LED in late 2016/early 2017. A road safety audit was completed at this location in 2017.
15	Westerville Rd / SR 3 @ Innis Rd	ODOT	101	-	2	22	11	66	3.34	31,000	2.98	46	28	21	28	30	43	59	2017 project added an eastbound right turn lane, upgraded the traffic signal, and improved sidewalks
16	Cleveland Ave @ Morse Rd	Columbus	265	1	1	36	33	194	2.47	58,800	4.12	1	92	4	90	88	87	18	Phase 2 of Morse Rd project completed in 2010, added turn lanes, signal rephasing. Crashes significantly reduced in 2010 and 2011. Traffic signal retimed in 2017.
17	Morse Rd @ Westerville Rd / SR 3	Columbus	176	-	4	13	23	136	2.73	55,400	2.90	7	69	24	52	73	51	8	A safety study of the intersection is currently in progress.
18	Refugee Rd @ Gender Rd	Columbus	140	-	2	20	12	106	2.63	34,300	3.73	16	77	8	57	45	38	26	Intersection safety project completed in 2017.
19	Cleveland Ave @ Oakland Park Ave	Columbus	110	-	1	20	16	73	2.86	32,400	3.10	33	59	18	37	34	39	11	Minor improvements made in 2013. LED signals and backplates were added in 2016.
20	E Dublin Granville Rd / SR 161 @ Karl Rd	Columbus	130	-	1	21	23	85	2.80	42,700	2.78	22	65	31	47	42	41	7	Corridor study is complete. LED signals and backplates were added in 2016.
21	Brice Rd @ Scarborough Blvd / Tussing Rd	Columbus	193	1	1	20	21	150	2.35	53,800	3.28	4	103	13	80	52	61	28	LED signal heads were installed in 2009. Improvements at this location will be designed as part of the I-70/I-270 interchange reconfiguration project.
22	Hamilton Rd / SR 317 @ Refugee Rd	Columbus	126	-	2	18	12	94	2.73	41,600	2.77	24	70	32	38	42	46	21	MORPC awarded funding and ODOT awarded safety funding. Project for improvements currently in the design phase with construction anticipated to begin in 2019.
23	Clime Rd @ Demorest Rd	Columbus	82	-	3	7	15	57	3.50	27,600	2.71	74	19	33	29	28	25	37	Improvements were made at this intersection as part of the Clime Road widening project. LED signals and backplates were added in 2016.
24	E Main St / US 40 @ Hamilton Rd / SR 317	Whitehall	102	1	2	4	23	72	3.12	38,300	2.43	42	36	49	33	35	34	29	
25	Livingston Ave @ Noe Bixby Rd / Woodcrest Rd	Columbus	80	-	3	12	13	52	3.83	29,100	2.51	79	11	41	24	28	28	25	A safety study of the intersection was completed in 2018. The City of Columbus is currently evaluating LED signal heads and backplates for the signal as well as other traffic control changes along Woodcrest Rd.
26	Westerville Rd / SR 3 @ Ferris Rd / Walnut Creek Dr	ODOT	70	-	5	11	10	44	5.10	22,900	2.79	103	3	30	10	24	36		2017 Highway Safety Improvement Program study location. Safety study will be completed within the next year.
27	Cleveland Ave @ Huy Rd	Franklin County	70	1	2	3	19	45	3.81	21,500	2.97	103	12	22	26	20	24		

TOP 100 HIGH-CRASH INTERSECTIONS (2015 TO 2017)

