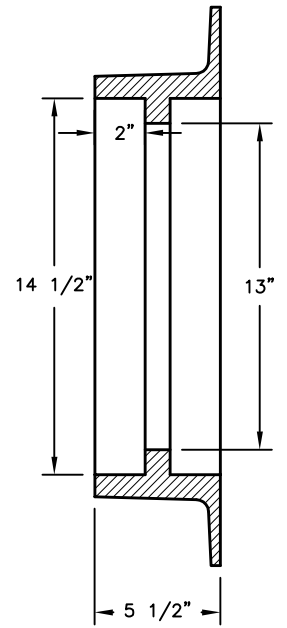
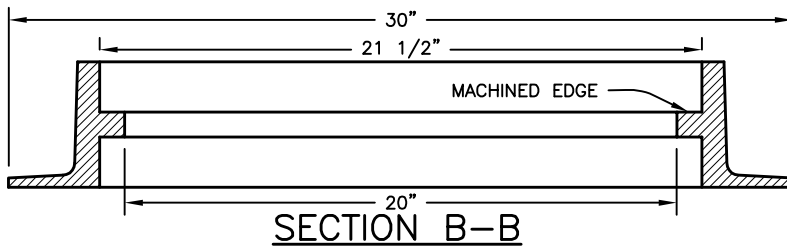
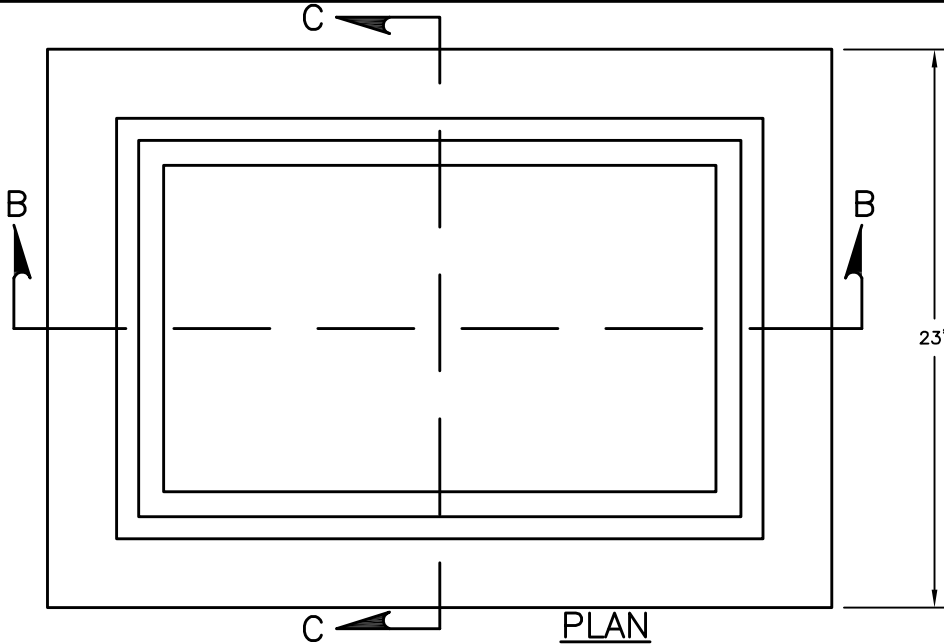


NOTE:

1. GRATING WEIGHT = 93 LBS. APPROX.
2. FRAMES, GRATES, AND COVERS SHALL MEET REQUIREMENTS OF 604.02 & AASHTO M306.
3. FRAME WEIGHT: 150 LBS.



PRE-APPROVED CASTINGS:

NEENAH NO. - 3460-A W/TYPE C GRATE

CITY OF COLUMBUS, OHIO
DEPARTMENT OF PUBLIC UTILITIES
DIVISION OF SEWERAGE & DRAINAGE

RECTANGULAR CAST IRON
INLET FRAME & GRATING

STANDARD DRAWING
AA-S140

REVISED 9/13/22

SSES MANAGER

PAGE

1

1