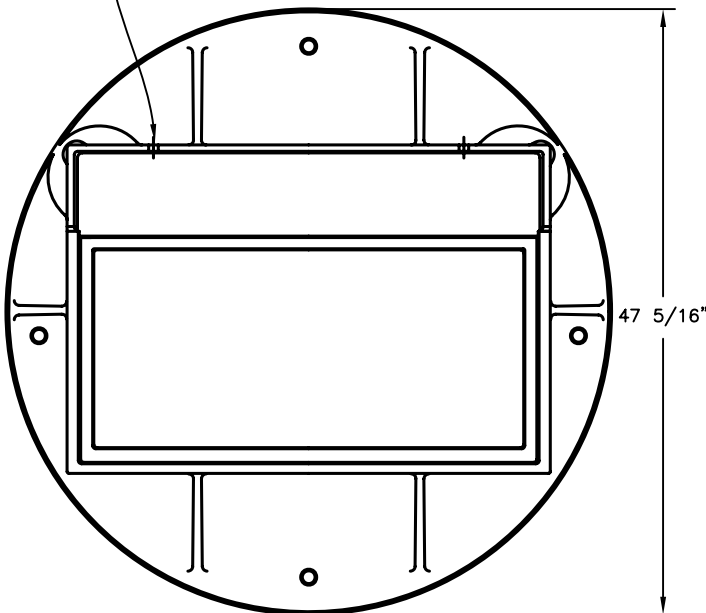


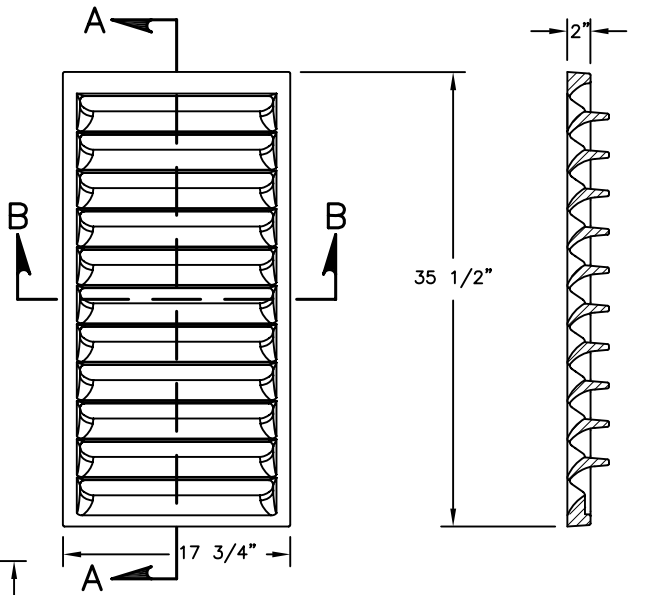
**NOTE:**

1. FRAMES, GRATES AND COVERS, SHALL MEET REQUIREMENTS OF 604.02 & AASHTO M306
2. CURB ADJUSTABLE FROM 3 1/4" TO 9".

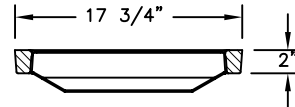
(2) 5/8"-11 HEX STAINLESS STEEL BOLTS W/NUTS AND WASHERS



**PLAN**



**SECTION A-A**

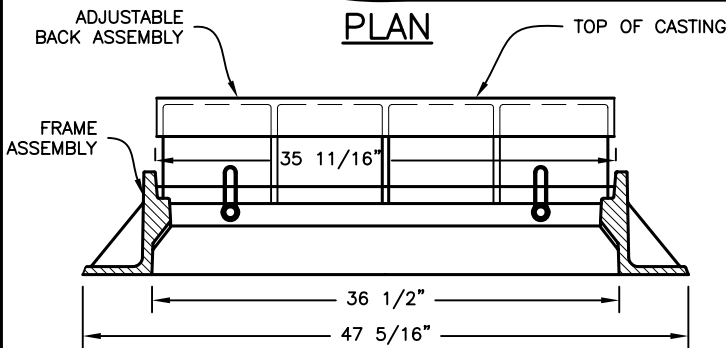


**SECTION B-B**

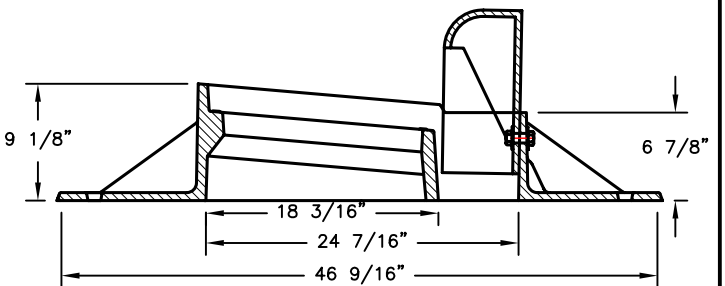
**CURB GRATING**

**PRE-APPROVED CASTINGS:**

EJ NO. - 7360Z WITH 7030M4 GRATE & 7030T6 BACK  
 NEENAH NO. - 3246-F WITH TYPE V GRATE



**ELEVATION**



**FRAME ASSEMBLY  
W/ADJUST. BACK**

**SECTION**

CITY OF COLUMBUS, OHIO  
 DEPARTMENT OF PUBLIC UTILITIES  
 DIVISION OF SEWERAGE & DRAINAGE

CURB & GUTTER INLET  
 FOR CURB INLET  
 MANHOLES

STANDARD DRAWING  
 AA-S142

REVISED 12/6/13

PAGE

1

1

SSES MANAGER

*John J. Newson*