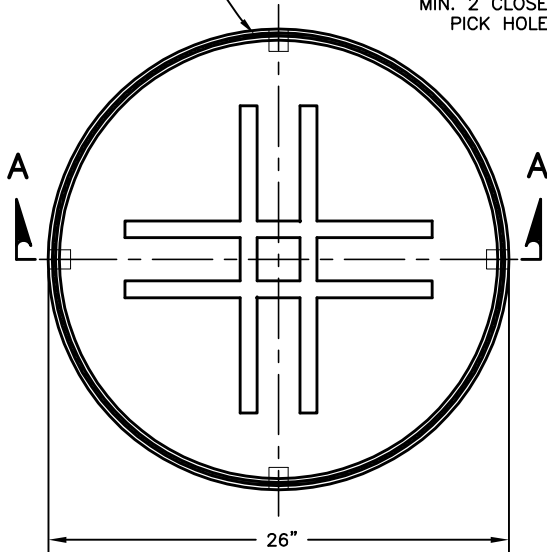


CONTINUOUS GASKET
OR T-SEAL

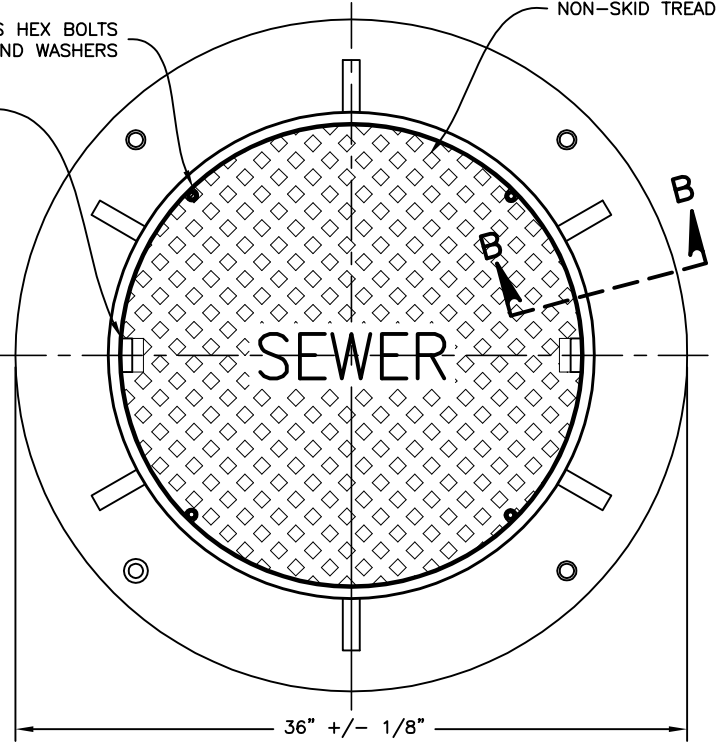


BOTTOM VIEW - LID

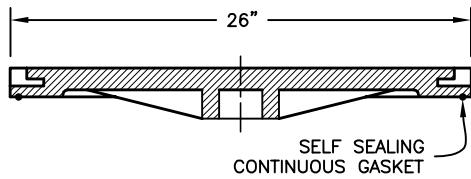
1/2" SS HEX BOLTS
AND WASHERS

MIN. 2 CLOSED
PICK HOLES

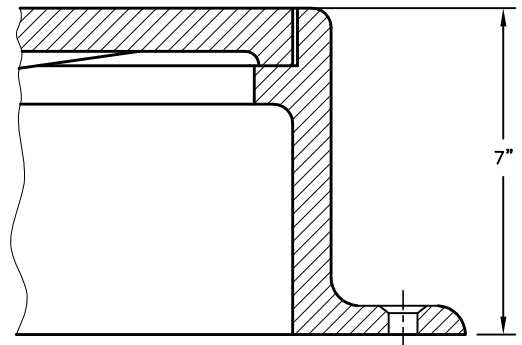
NON-SKID TREAD



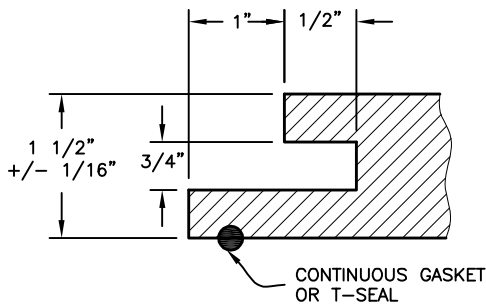
TOP VIEW OF ASSEMBLY



SECTION A-A



SECTION B-B



**PICK HOLE
DETAIL**

NOTES:

- 1. FRAMES, GRATES, AND COVERS SHALL MEET THE REQUIREMENTS OF 604.02 AND AASHTO M 306.

PRE-APPROVED CASTINGS:

- EJ NO. - 1045ZPT ASSEMBLY
- NEENAH NO. - 1916-F

CITY OF COLUMBUS, OHIO
 DEPARTMENT OF PUBLIC UTILITIES
 DIVISION OF SEWERAGE & DRAINAGE

STANDARD DIMENSIONS
 FOR 26" WATER TIGHT
 FRAME AND COVER

STANDARD DRAWING
 AA-S143

REVISED 9/12/22

PAGE

1

1

SSES MANAGER