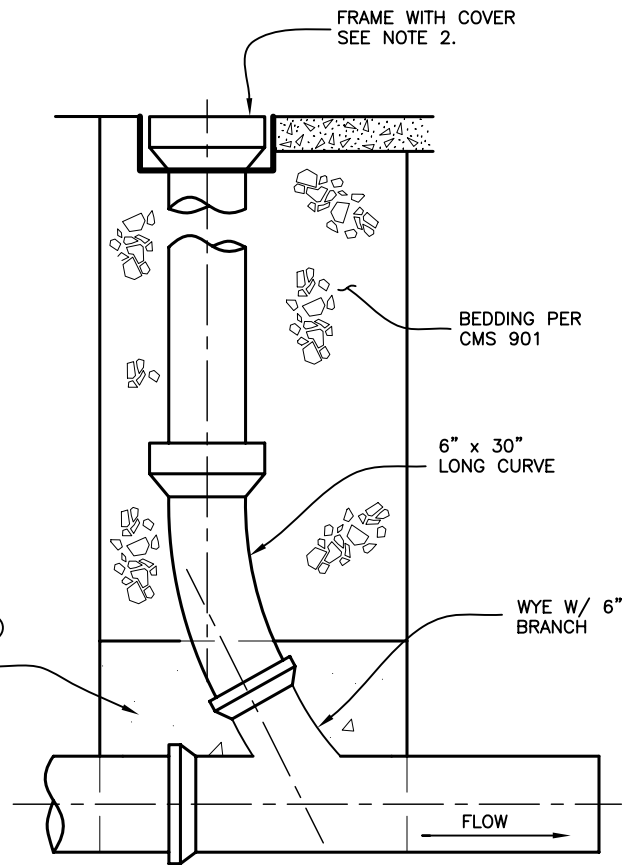


END VIEW



SIDE VIEW

NOTES:

1. PIPE MATERIALS SHALL BE THE SAME MATERIAL FITTING OR WITH A COMPATIBLE ADAPTER AS THE MAIN SEWER OR IN ACCORDANCE WITH 914.02.
2. FOR CLEANOUTS THAT TERMINATE IN PAVED AREAS, A FRAME AND COVER SHALL BE USED IN ADDITION TO MANUFACTURERS CAP/PLUG.

PRE-APPROVED CASTINGS:

EJ NO. - 1578
NEENAH NO. - 1976

CITY OF COLUMBUS, OHIO
DEPARTMENT OF PUBLIC UTILITIES
DIVISION OF SEWERAGE & DRAINAGE

John H. Newson

SSES MANAGER

TYPICAL CLEANOUT

STANDARD DRAWING
AA-S161

REVISED 12/6/13

PAGE

1

1