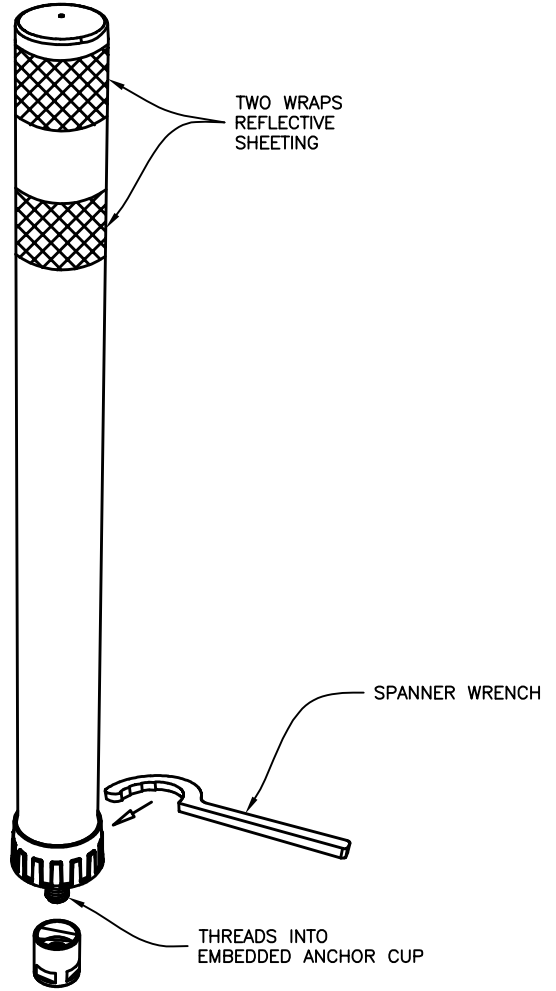
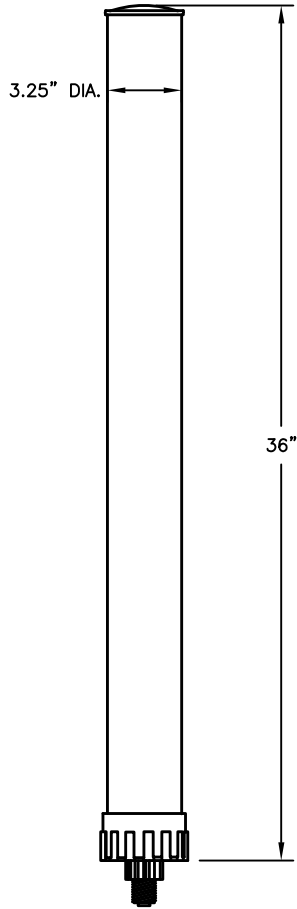


AT-GRADE 2" ALUMINUM
EMBEDDED ANCHOR CUP



NOTES:

- 1) POST SHALL BE WHITE
- 2) REFLECTIVE SHEETING SHALL BE SILVER
- 3) CONTRACTOR TO SUPPLY MINIMUM ONE SPANNER WRENCH WITH EACH PROJECT
- 4) INSTALLATION SHALL BE COMPLETED IN ACCORDANCE WITH MANUFACTURER'S SPECIFICATIONS

APPROVED SUPPLIERS:

- 1) PEXCO - CITY POST

CITY OF COLUMBUS, OHIO
DEPARTMENT OF PUBLIC UTILITIES
DIVISION OF SEWERAGE & DRAINAGE

REBOUNDABLE
TRAFFIC POST

STANDARD DRAWING
AA-S196

REVISED 8/30/21

APPROVED:

8/26/22

SSES MANAGER

DATE

PAGE

1

1