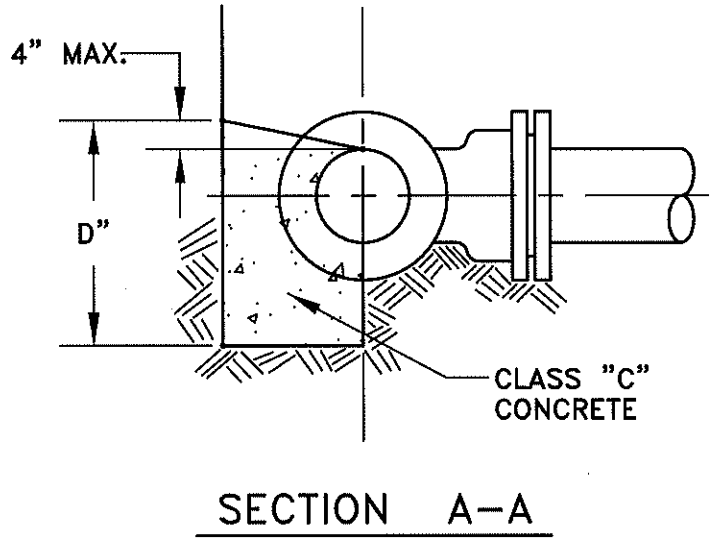
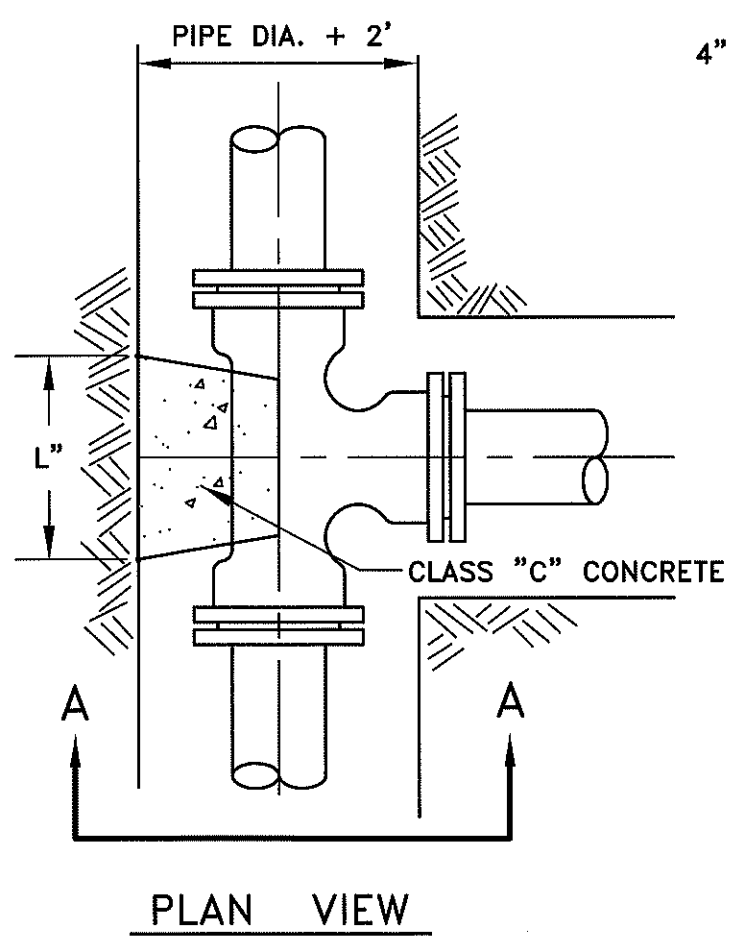


R U N	BRANCH																								
	3"			4"			6"			8"			12"			16"			20"			24"			
	L"	D"	Vc.f.	L"	D"	Vc.f.	L"	D"	Vc.f.	L"	D"	Vc.f.	L"	D"	Vc.f.	L"	D"	Vc.f.	L"	D"	Vc.f.	L"	D"	Vc.f.	
3"	12	5	0.5																						
4"	10	6	0.5	11	8	0.8																			
6"	9	7	0.5	11	8	0.8	18	12	1.9																
8"	8	8	0.5	10	9	0.7	18	12	1.9	23	16	3.5													
12"	6	12	0.6	8	12	0.8	18	12	1.9	23	16	3.5	38	22	8.7										
16"							14	16	2.0	20	18	3.3	36	23	8.7	49	30	13.6							
20"							11	20	1.9	18	20	3.3	35	24	8.7	46	32	13.6	60	38	26.5				
24"							9	24	1.9	15	24	3.3	30	28	8.7	42	36	14.0	54	42	26.3	68	48	45.4	

STEEL WILL BE USED AS REQUIRED BY THE ENGINEER

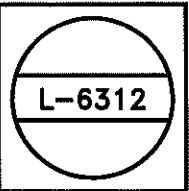


- NOTES:**
1. BACKER DESIGNED FOR 3000 PSF SOIL BEARING.
  2. CONCRETE TO BE PLACED AGAINST UNDISTURBED EARTH.
  3. PROVIDE CLEARANCE FOR REMOVAL OF BOLTS.

CITY OF COLUMBUS  
 DEPARTMENT OF PUBLIC UTILITIES  
 DIVISION OF WATER

APPROVED:  
*R.C. Westerfield* 1-26-18  
 ADMINISTRATOR DATE

STANDARD DETAIL  
**BACKING FOR TEES**



L-6312.Dwg Revision Date: 1/2/13