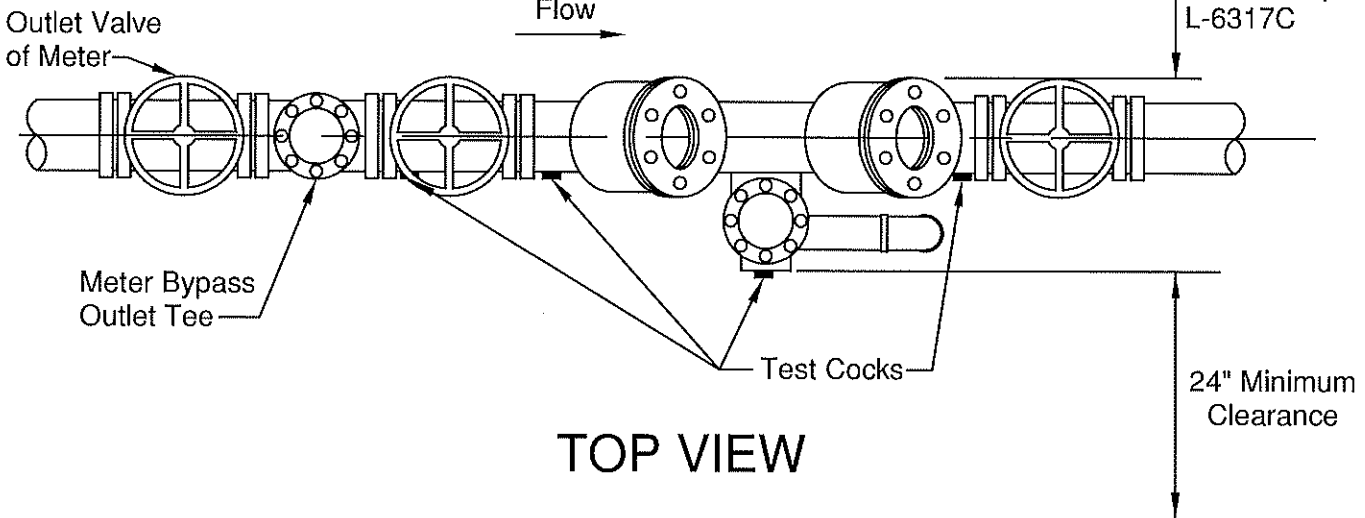
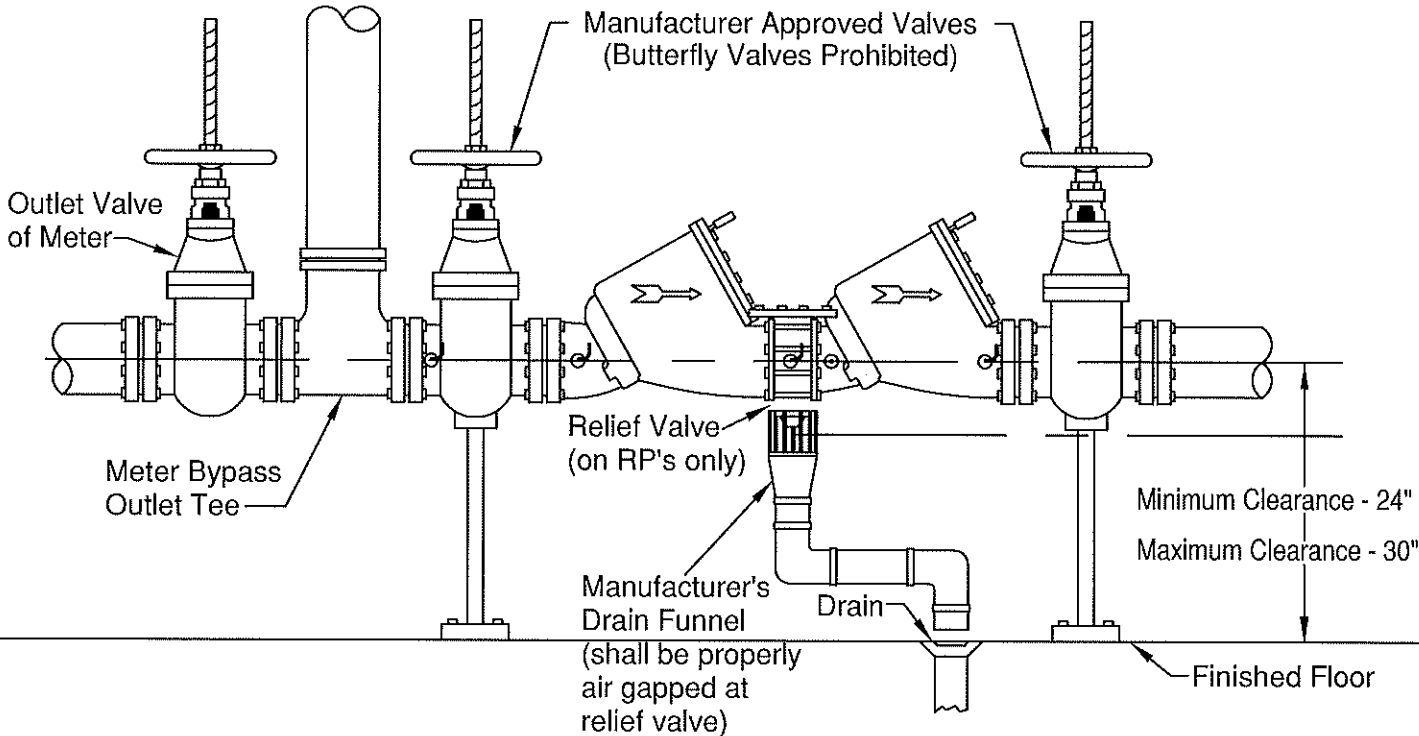


Installation shall follow "L-9002B".



TOP VIEW



SIDE VIEW

L-9002A.Dwg Revision Date: 1/11/21

CITY OF COLUMBUS  
 DEPARTMENT OF PUBLIC UTILITIES  
 DIVISION OF WATER

APPROVED:  
*Vanessa Pottend*  
 ADMINISTRATOR

5/17/21  
 DATE

STANDARD DETAIL  
 BACKFLOW PREVENTER  
 SETTING  
 (FOR DOUBLE CHECK & REDUCED PRESSURE ASSEMBLIES)

