

## **2-2" CONDUIT UNDER STREET PAVEMENT OR SIDEWALK**

### I. Quantity

The base bid shall include the indicated number of feet of 2-2" conduit as an assembly and located as shown on the drawing.

### II. Material

- a. Conduit - The non-metallic conduit shall be schedule 40 polyvinyl chloride. It shall be designed to form a sound, strong duct, free from defects. It shall be non-magnetic, resistant to corrosive action, unaffected by electrolysis and shall not soften, deform or deteriorate when exposed to the maximum safe operating temperature of cables. The inside surface of the conduit shall be smooth, and round and shall have a 2" nominal inside diameter. The conduit shall be Carlon, Heritage, Cantex heavy wall PV-duit plus conduit or approved equal.
- b. Couplings - The couplings shall be of the same material as the conduit, and shall be sufficiently tight to prevent silt or concrete from entering the conduit.
- c. Spacers - Plastic base type sized for the conduit.
- d. Underground Hazard Tape

The underground hazard tape shall be 3" wide yellow plastic with the black legend "CAUTION ELECTRIC LINE BURIED BELOW." The tape shall be manufactured by T & B Panduit, Terra Tape or approved equal.

### III. Installation

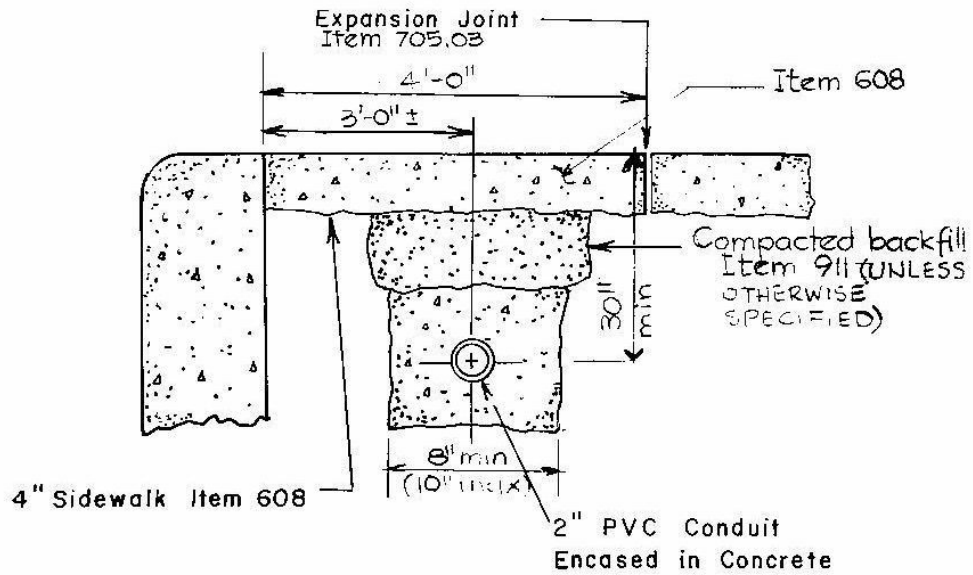
- a. The conduit shall be installed as shown on the detailed drawings 01S0020 conduit under sidewalk or 01S0023 conduit under street pavement.
- b. If the conduit is installed in an area to be paved under a separate item of this or another contract, backfill shall be appropriate for the paving indicated. No other surface restoration will be required
- c. The trench shall be dug wide and deep enough to accommodate the conduit concrete envelope as indicated on the detailed drawings. The bottom of the trench shall be level and free of all stones and rocks. Excess material shall be

disposed of by the Contractor as specified in Section 203.05 of the City of Columbus Construction and Materials Specifications.

- d. The centerline of the conduit runs shall be 24" back of the house side face of the curb unless otherwise specified on the drawings or as indicated in the field by the engineer.
- e. After the duct lines are installed, a flexible mandrel not less than 12" long, having a cross section approximately 1/4" less than the conduit shall be pulled through each conduit after which a stiff overside wire brush shall be pulled through to make certain there are no particles left in the conduit.
- f. Three spacer assemblies shall be installed under each section of conduit, one in the middle and one on each end of the section to insure total encasement of the conduit.

#### IV. Quotation

The concrete encased conduit assembly hereinbefore specified shall be quoted for as a unit price per lineal foot in the appropriate place of this document.



### NOTES

1. CONCRETE ENCASEMENT 3" MIN. ALL SIDES (4" MAX)  
ITEM 499 CLASS C
2. ITEM NUMBER FROM THE CITY OF COLUMBUS  
CONSTRUCTION AND MATERIALS SPECIFICATIONS

6/90  
 7/92  
 11/93  
 REVISIONS

**MEL&P**

MUNICIPAL ELECTRIC LIGHT & POWER SYSTEM  
 CITY OF COLUMBUS, OHIO  
 DEPT. OF PUBLIC SERVICE DIV. OF ELECTRICITY

## CONDUIT UNDER - CONCRETE SIDEWALK -

SCALE NONE

DRAWN

DRAWING NO.

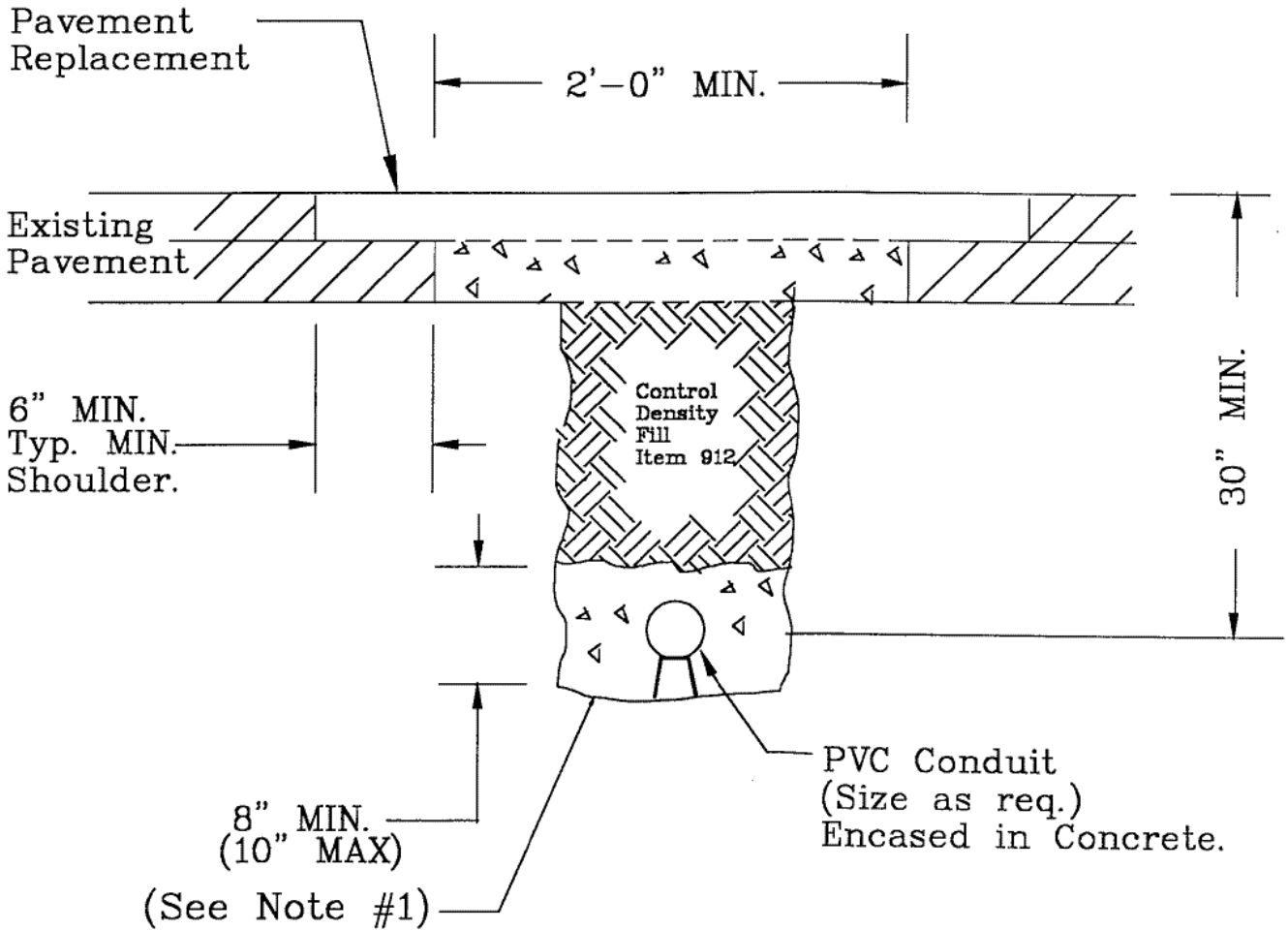
PROJECT NO.

APPROVED

01S0020

SHEET 1 OF 1

Pavement Repair & C.D.F. Backfill  
 Per Division of Engineering & Construction  
 Standard 1441 Dr. A.



NOTES:

- 1) Concrete encasement 3" MIN.(4"MAX) all sides item 499 Class C.
- 2) Conduit to pass under curbs and sub-drains.
- 3) Item numbers are from the City of Columbus Construction and materials Specifications.

4-10-91  
 8-17-99

REVISIONS

MELP

MUNICIPAL ELECTRIC LIGHT & POWER SYSTEM  
 CITY OF COLUMBUS, OHIO  
 DEPT. OF UTILITIES & AVIATION - DIV. OF ELECTRICITY

CONDUIT UNDER STREET PAVEMENT

SCALE NONE

DRAWN PC 4/91

DRAWING NO. 01S0023

C. D. NUMBER

APPROVED

SHEET 1 OF 1