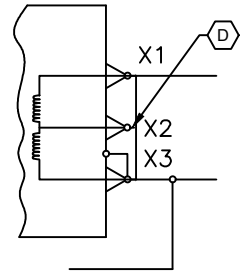
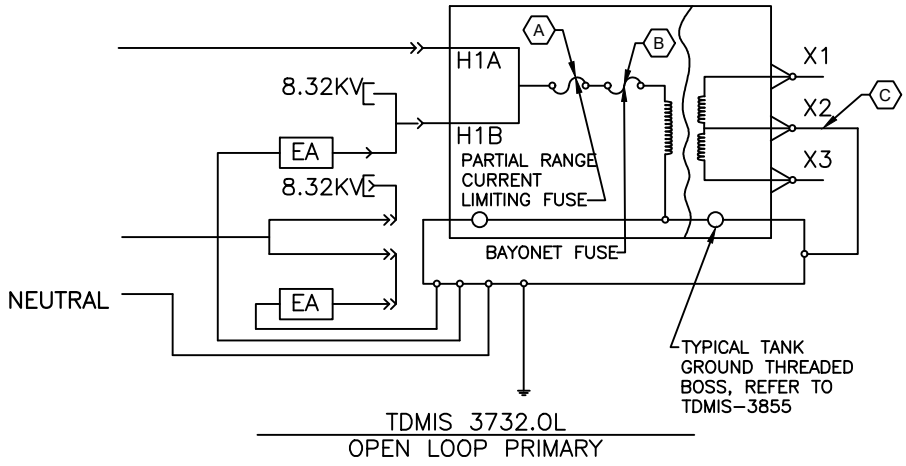
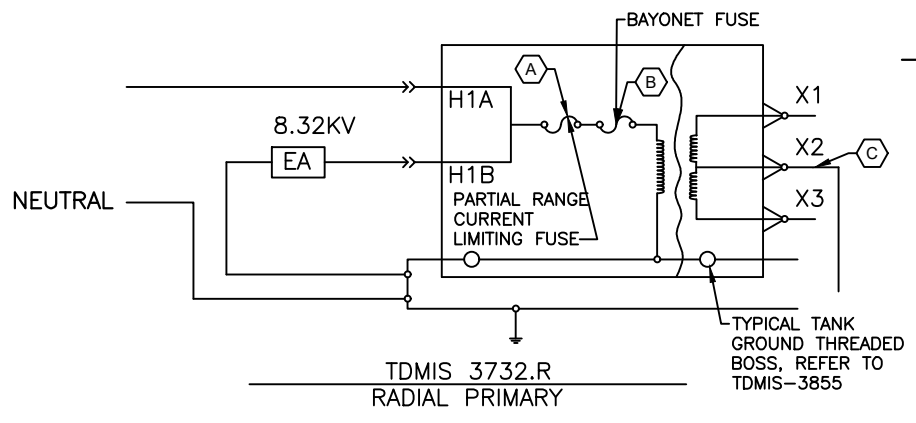


DETAIL 1
120/240 VOLT SECONDARY



DETAIL 2
480 VOLT SECONDARY



- CODED NOTES:**
- (A) NOT REPLACEABLE BY FIELD PERSONNEL.
 - (B) BAYONET TYPE, LOAD-BREAK FUSEHOLDER.
 - (C) FOR SECONDARY CONNECTIONS, REFER TO DETAILS 1 OR 2.
 - (D) INSULATE THIS BUSHING AND ATTACH A TAG INDICATING THAT IT IS ENERGIZED.

LEGEND	
	BUSHING
	ELBOW
	INSULATING CAP
	PARKING BUSHING
	FEED THRU CAN BE 2, 3, OR 4 OUTLETS
	ELBOW ARRESTER
	OVERHEAD ARRESTER