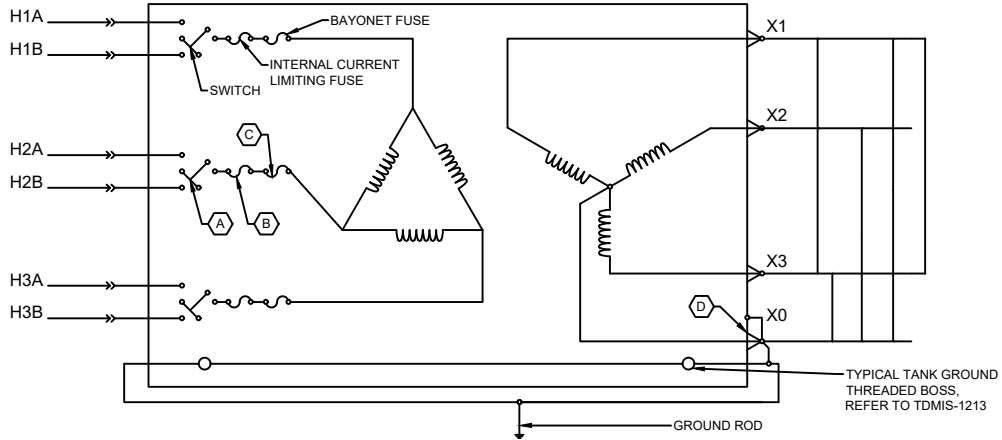
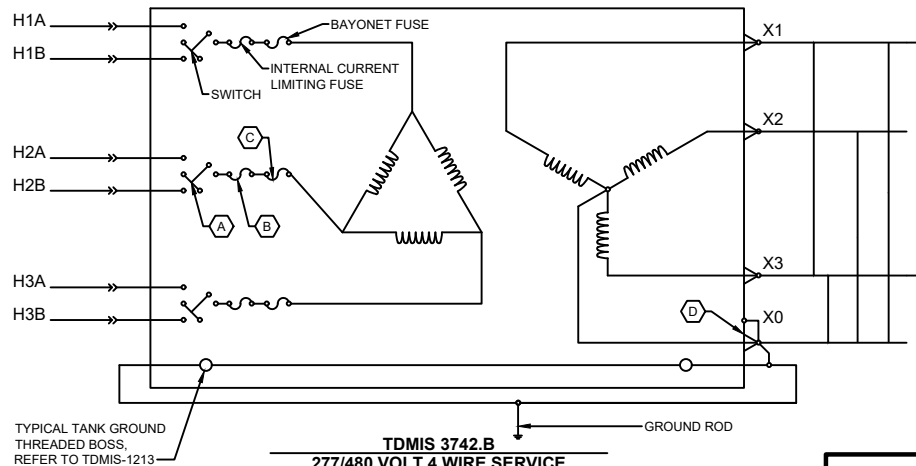


**CODED NOTES:**

- A** "T" BLADE SWITCH, TYP., SEE TABLE 1.
- B** NOT REPLACEABLE BY FIELD PERSONNEL.
- C** BAYONET TYPE, LOAD-BREAK FUSEHOLDER.
- D** GROUND STRAP IS NOT REQUIRED IF THE X0 TERMINAL IS A SPADE WELDED DIRECTLY TO THE TANK.



**TDMIS 3742.A**  
120/208 VOLT 4 WIRE SERVICE



**TDMIS 3742.B**  
277/480 VOLT 4 WIRE SERVICE

**T-BLADE SWITCH POSITION**

|                                 | POINTER DIRECTION |        |                   |  |
|---------------------------------|-------------------|--------|-------------------|--|
|                                 | LEFT              | RIGHT  | UP                | DOWN   |
| SOURCE OF POWER FOR TRANSFORMER | LINE A            | LINE B | LINE A AND LINE B | TRANSFORMER OPEN<br>LINE A AND LINE B<br>CONNECTED |
| CIRCUIT CONNECTION              |                   |        |                   |  |

| LEGEND |                                     |
|--------|-------------------------------------|
|        | BUSHING                             |
|        | ELBOW                               |
|        | INSULATING CAP                      |
|        | PARKING BUSHING                     |
|        | FEED THRU CAN BE 2, 3, OR 4 OUTLETS |
|        | ELBOW ARRESTER                      |
|        | OVERHEAD ARRESTER                   |