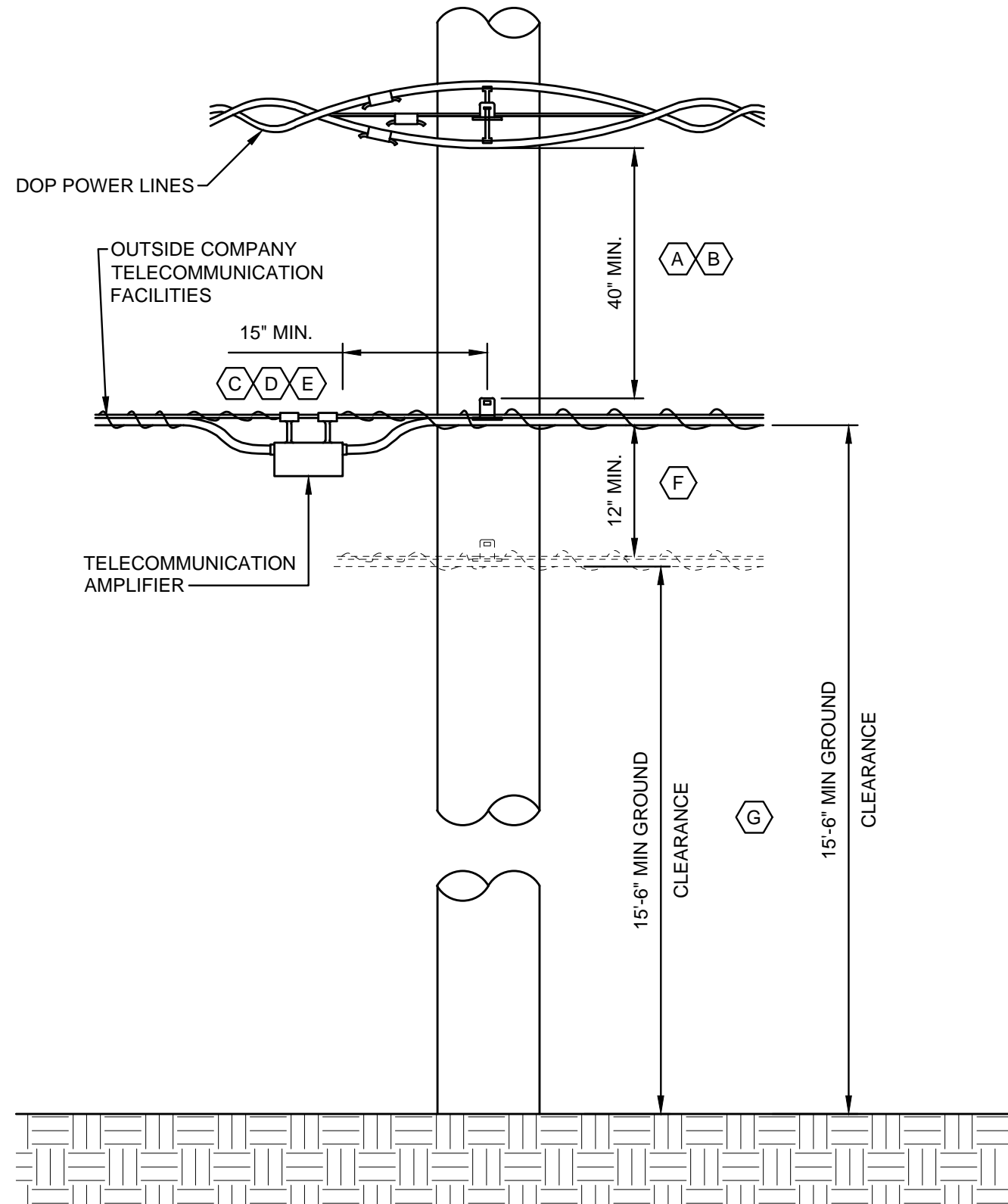


**GENERAL NOTES:**

1. ALL CLEARANCES LISTED ARE PER NESC 2017.

**CODED NOTES:**

- (A) TELECOMMUNICATION EQUIPMENT OTHER THAN COMMUNICATION CABLE SHALL NOT BE INSTALLED ON CAPACITOR, TRANSFORMER, REGULATOR, RECLOSER, SECTIONALIZER, OR PRIMARY/SECONDARY RISER POLE
- (B) CLEARANCE REQUIRED FROM SUPPLY CIRCUIT CONDUCTORS RATED 8.7 KV OR LESS. GROUNDED EQUIPMENT (I.E. TRANSFORMER) CASES AND ALL-DIELECTRIC SELF-SUPPORTED FIBER OPTIC-SUPPLY CABLES. OTHER SUPPLY CIRCUIT CABLES INCLUDE DUPLEX, QUADRUPLEX AND NEUTRAL CONDUCTORS. CONDUCTOR CLEARANCE INCREASES IF SUPPLY CONDUCTORS ARE MORE THAN 8.7 KV. REFER TO NESC TABLE 235-5.
- (C) SUPPLY SERVICE CONDUCTOR ATTACHED DIRECTLY TO THE POLE SHALL MAINTAIN A MINIMUM OF 40" CLEARANCE TO METAL OBJECTS OF TELECOMMUNICATION EQUIPMENT, TABLE 238-1 OF NESC.
- (D) ATTACHMENTS OF ALL COMMUNICATION TYPE FACILITIES TO BE ON THE SAME SIDE OF POLE. CATV SERVICE TO BE TAKEN OFF CATV CABLE AND MESSENGER, AND NOT AT POLE. PROVIDE 30" HORIZONTAL CLIMBING SPACE THROUGH ATTACHED EQUIPMENT.
- (E) TELECOMMUNICATION ATTACHMENTS AND ASSOCIATED EQUIPMENT, SUCH AS AMPLIFIERS, SHALL BE INSTALLED IN A MANNER SATISFACTORY AS SO NOT TO INTERFERE WITH THE PRESENT OR ANY FUTURE USE WHICH COMPANY MAY DESIRE TO MAKE OF ITS POLES. NO STANDBY POWER SUPPLY EQUIPMENT SHALL BE PERMITTED TO BE ATTACHED TO CITY/DOP POLES.
- (F) THE MIN. SPACING BETWEEN TELECOMMUNICATION POLE ATTACHMENTS FOR CONSTRUCTION/MAINTENANCE.
- (G) DIMENSION SHOWN IS A MIN. SAG CLEARANCE ABOVE GROUND FOR INSULATED TELECOMMUNICATION CONDUCTORS AND CABLE UNDER NESC ZONE CONDITIONS. POLE ATTACHMENT LOCATION MAY BE AT A DIFFERENT HEIGHT. REFER TO RULE 232 AND TABLE 232-1 OF THE NESC FOR REQUIREMENTS TO DETERMINE THE PROPER POLE ATTACHMENT HEIGHT.



CITY OF COLUMBUS, OHIO DEPT. OF PUBLIC UTILITIES - DIVISION OF POWER		
<b>JOINT USE TELECOMMUNICATION EQUIPMENT AND CABLES</b>		
DRAWN BY: AEC	DATE: 01/01/2018	<b>TDMIS-600</b>
APPROVED: R. SPRITE		
SCALE: NTS	SHEET: 1 OF 1	