

**APPENDIX E**

Culvert Headwater Exhibits





0 50 100  
 HORIZONTAL  
 SCALE IN FEET

CALCULATED  
 CHECKED



STORM SEWER  
 INTERCEPT OF STREAM  
 AREA=50.32 Acres

CAPITAL CITY  
 NEUROSURGERY

FIRST  
 MERCHANTS  
 BANK

SR 315 SOUTHBOUND  
 SR 315 NORTHBOUND

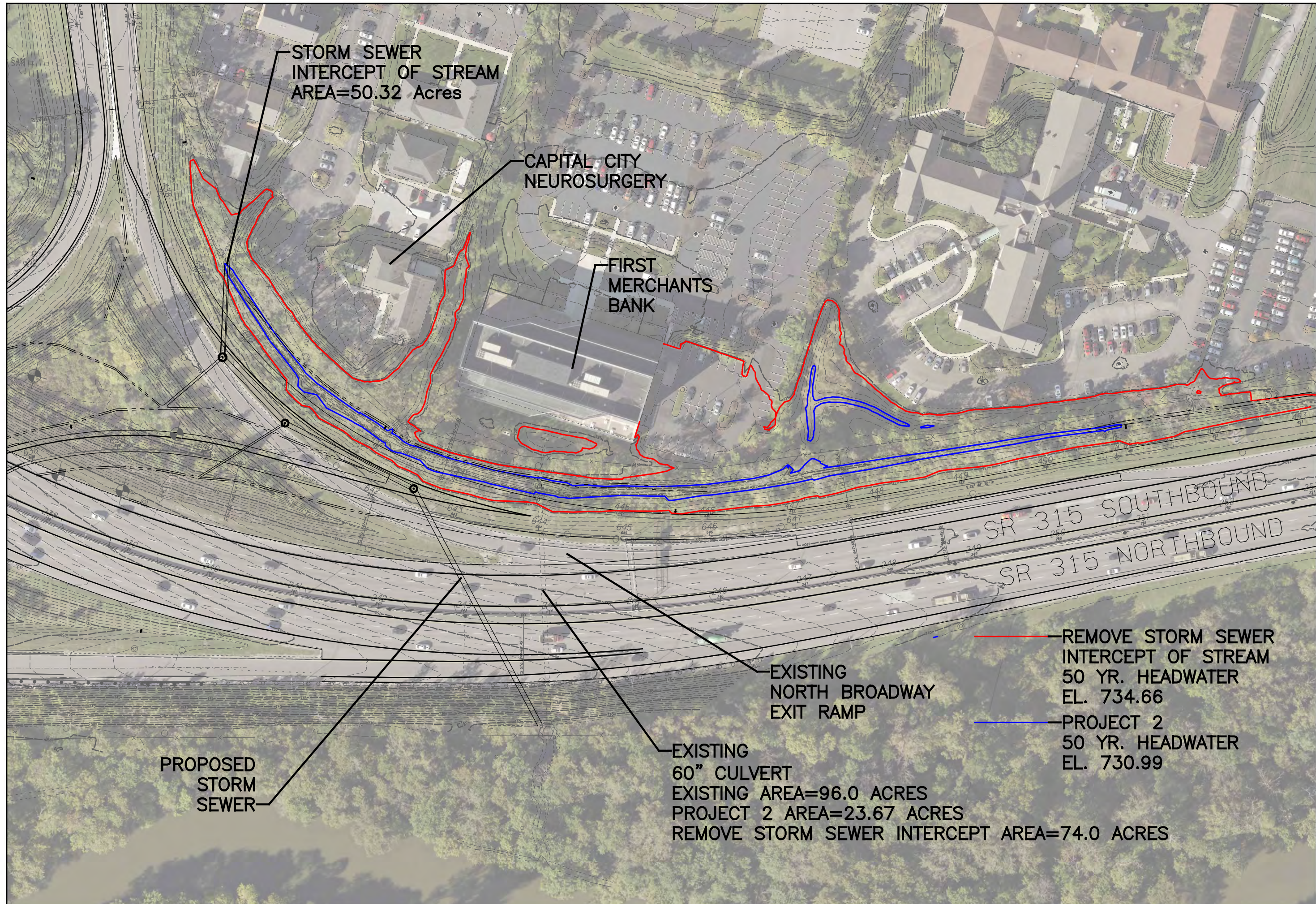
PROPOSED  
 STORM  
 SEWER

EXISTING  
 NORTH BROADWAY  
 EXIT RAMP

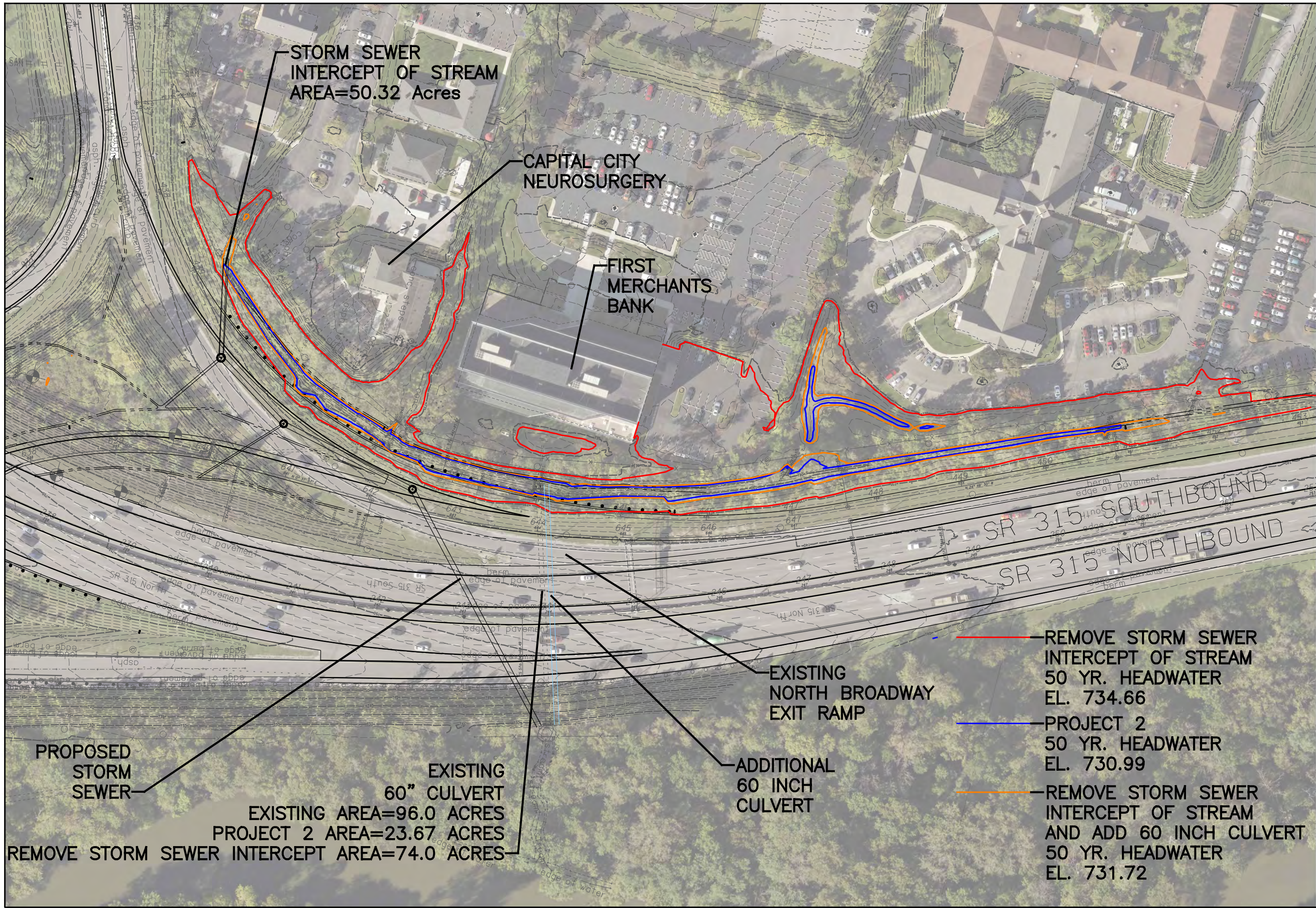
EXISTING  
 60" CULVERT  
 EXISTING AREA=96.0 ACRES  
 PROJECT 2 AREA=23.67 ACRES  
 REMOVE STORM SEWER INTERCEPT AREA=74.0 ACRES

REMOVE STORM SEWER  
 INTERCEPT OF STREAM  
 50 YR. HEADWATER  
 EL. 734.66

PROJECT 2  
 50 YR. HEADWATER  
 EL. 730.99







STORM SEWER  
INTERCEPT OF STREAM  
AREA=50.32 Acres

CAPITAL CITY  
NEUROSURGERY

FIRST  
MERCHANTS  
BANK

SR 315 SOUTHBOUND

SR 315 NORTHBOUND

EXISTING  
NORTH BROADWAY  
EXIT RAMP

ADDITIONAL  
60 INCH  
CULVERT

PROPOSED  
STORM  
SEWER

EXISTING  
60" CULVERT  
EXISTING AREA=96.0 ACRES  
PROJECT 2 AREA=23.67 ACRES

REMOVE STORM SEWER INTERCEPT AREA=74.0 ACRES

- REMOVE STORM SEWER INTERCEPT OF STREAM 50 YR. HEADWATER EL. 734.66
- PROJECT 2 50 YR. HEADWATER EL. 730.99
- REMOVE STORM SEWER INTERCEPT OF STREAM AND ADD 60 INCH CULVERT 50 YR. HEADWATER EL. 731.72

CALCULATED

0 50 100

HORIZONTAL SCALE IN FEET

CHECKED

