



GENERAL PLANTING NOTES
 1. PROTECT ALL PLANTS WITHIN THE STREAM CORRIDOR PROTECTION ZONE.
 2. REFER TO SHEET 2 TREE REPLACEMENT NOTES AND PLANTING PLAN.

LEGEND
 EXISTING TREES TO REMAIN, PROTECT IN PLACE
 REMOVE TREE AND STUMP. BACKFILL VOID WITH PLANTING SOIL AND COMPACT



THE KLEINGERS GROUP
 CIVIL ENGINEERING SURVEYING LANDSCAPE ARCHITECTURE
 www.kleingers.com
 350 Worthington Rd, Ste B
 Westerville, OH 43082
 614.882.4311

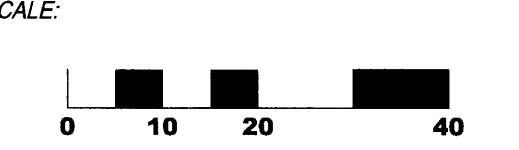


SEAL:

NO. DATE DESCRIPTION

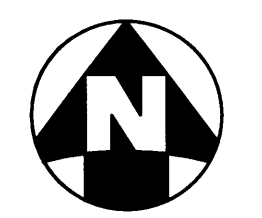
**FAMILY DOLLAR
 COURTRIGHT RD
 COLUMBUS
 FRANKLIN
 COUNTY, OHIO**

PROJECT NO: 160165.002
 DATE: 12.12.2016

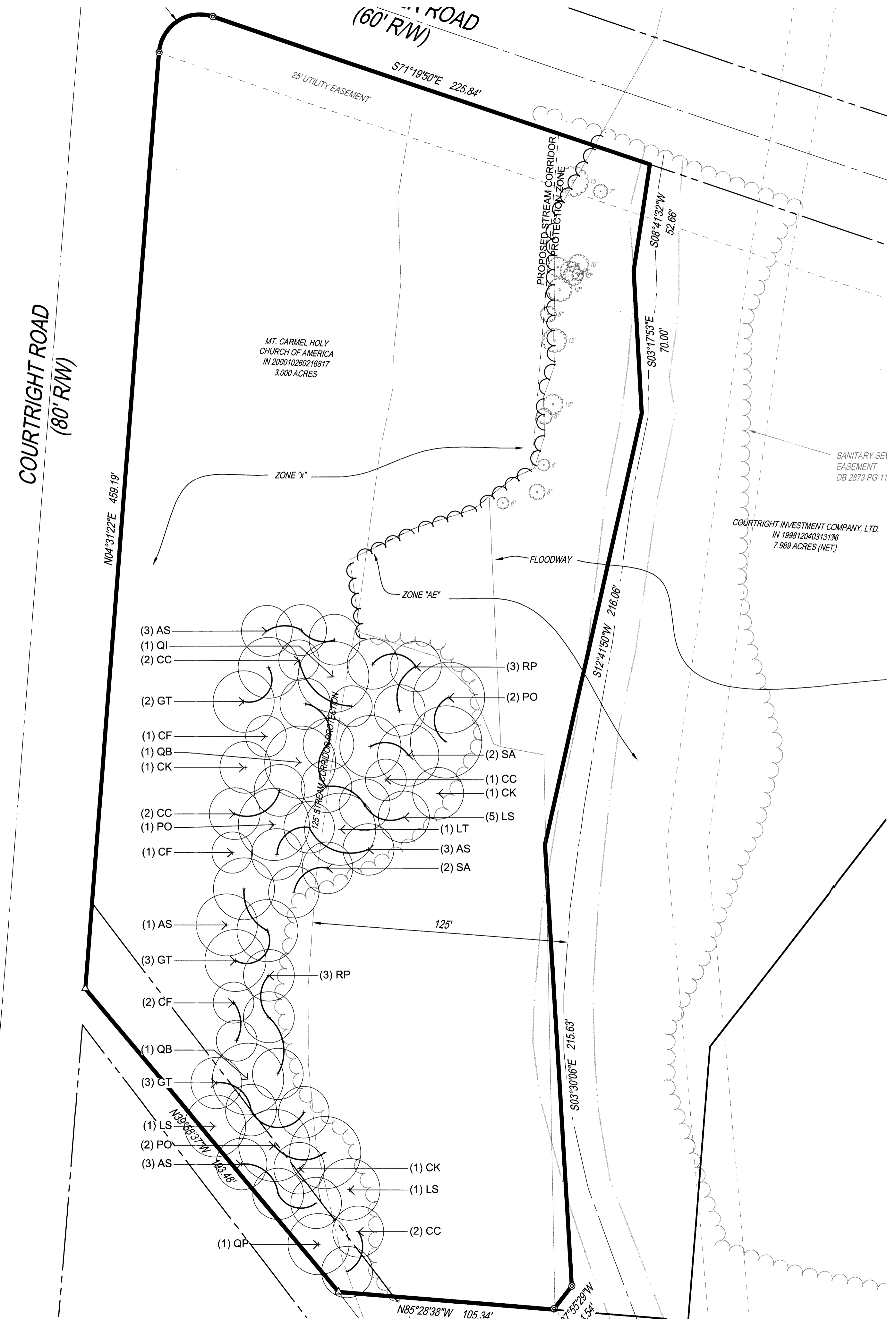


SHEET NAME:
**TREE DEMOLITION
 PLAN**

SHEET NO.
1/3



I:\Columbus\PL160165\DWG\002\SHEETS\160165\LIND002.dwg, 12/12/2016 2:59:27 PM, rps@rps.com



- GENERAL PLANTING NOTES**
- EACH CONTRACTOR IS RESPONSIBLE FOR LOCATING AND PROTECTING ALL EXISTING UTILITIES.
 - SUBSURFACE IMPROVEMENTS SHALL BE OBSERVED. THE CONTRACTOR SHALL CONTACT THE OHIO UTILITIES PROTECTION SERVICE (OUPS) 48 HOURS PRIOR TO ANY EXCAVATION OR DIGGING TO ENSURE THE LOCATION OF UNDERGROUND UTILITIES. IT SHALL BE THE CONTRACTOR'S RESPONSIBILITY TO PROTECT SUCH UNDERGROUND UTILITIES.
 - ALL AREAS DISTURBED BY CONSTRUCTION SHALL BE FINE GRADED AND SEEDED.
 - ALL TREES WITHIN A SPECIES SHALL HAVE MATCHING FORM.
 - THE CONTRACTOR SHALL ENSURE THAT ALL NEWLY PLANTED TREES ARE PERFECTLY ALIGNED AND SET PLUMB WITH PROPER RELATIONSHIP TO THE SURROUNDING GRADE. CONFIRM FINISHED GRADE PRIOR TO PLANTING.
 - ALL PLANT MATERIAL SHALL BE OF THE SIZE AND TYPE SPECIFIED. IF SUBSTITUTIONS ARE APPROVED BY THE OWNER'S REPRESENTATIVE, THE SIZE AND GRADING STANDARDS SHALL CONFORM TO THOSE OF THE AMERICAN ASSOCIATION OF NURSERYMEN.

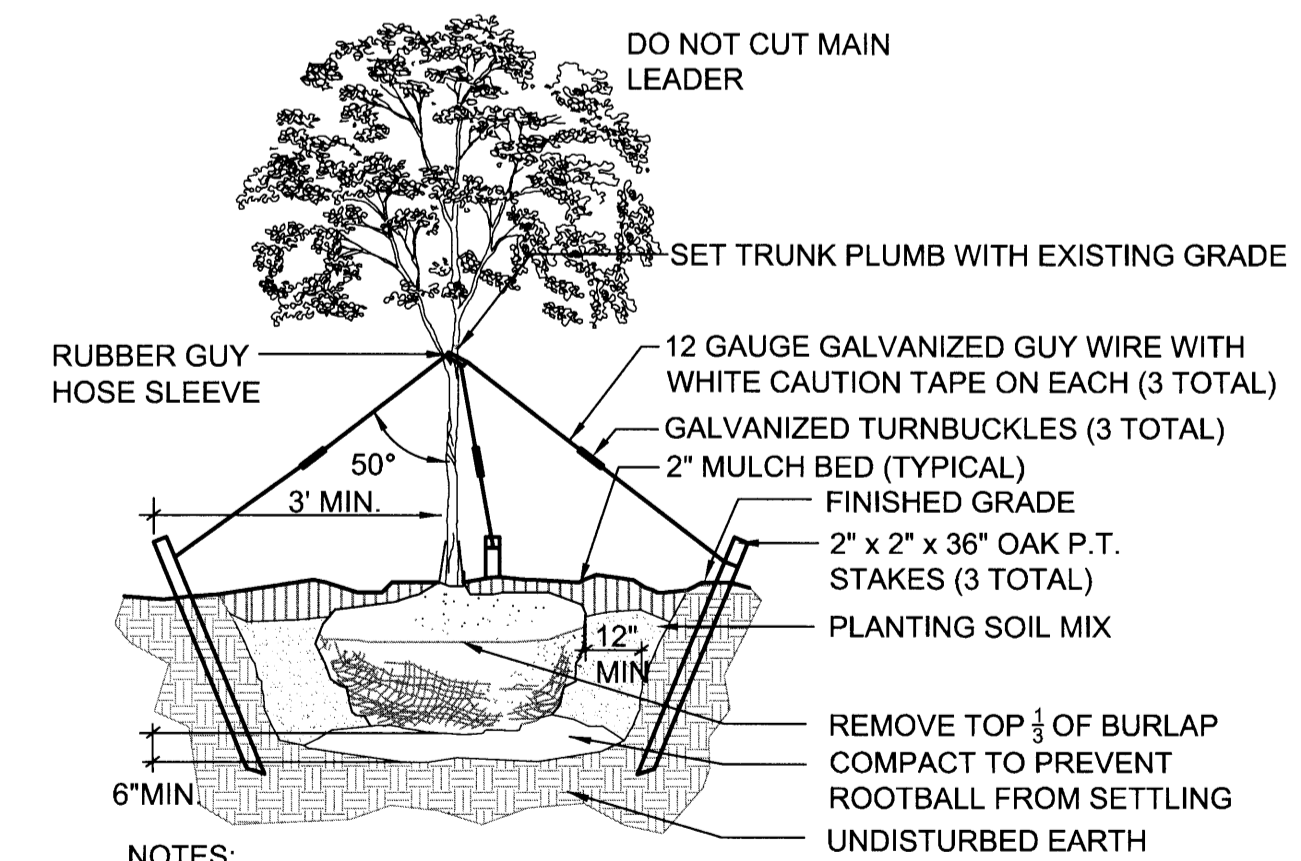
PLANTING SCHEDULE

KEY	COMMON NAME	BOTANICAL NAME	SIZE	ROOT	REMARKS
AS	ACER SACCHARUM 'COMMEMORATION'	COMMEMORATION SUGAR MAPLE	2.5" CAL.	B&B	
CC	CERCIS CANADENSIS	REDBUD	2.5" CAL.	B&B	
CK	CLADRSTIS KENTUCKEA	YELLOWWOOD	2.5" CAL.	B&B	
CF	CORNUS FLORIDA	FLOWERING DOGWOOD	2.5" CAL.	B&B	
GT	GLEDITSIA TRICANTHOS 'SUNBURST'	SUNBURST HONEYLOCUST	2.5" CAL.	B&B	
LS	LIQUIDAMBAR STYRACIFLUA	SWEETGUM	2.5" CAL.	B&B	
LT	LIRIODENDRON TULIPIFERA	TULIP TREE	2.5" CAL.	B&B	
PO	PLATANUS OCCIDENTALIS	AMERICAN SYCAMORE	2.5" CAL.	B&B	
QB	QUERCUS BICOLOR	WHITE SWAMP OAK	2.5" CAL.	B&B	
QI	QUERCUS IMBRICARIA	SHINGLE OAK	2.5" CAL.	B&B	
QP	QUERCUS PALUSTRIS	PIN OAK	2.5" CAL.	B&B	
RP	ROBINIA PSEUDOACACIA	BLACK LOCUST	2.5" CAL.	B&B	
SA	SASSAFRAS ALBIDUM	SASSAFRAS	2.5" CAL.	B&B	

TURF SEED: REFER TO SPECIFICATIONS

LANDSCAPE ZONING REQUIREMENTS (COLUMBUS, OHIO ZONING CODE)

	REQUIRED	PROPOSED	
TREE REPLACEMENT (EXECUTIVE ORDER 2015-01)	<p>< 12" CAL. = 1:1 12" - 18" CAL. = 2:1 18" - 24" CAL. = 3:1 24" - 30" CAL. = 4:1 > 30" CAL. = 5:1</p>	<p>< 12" CAL.: 39 TREES REMOVED = 39 REPLACEMENTS 12" - 18" CAL.: 10 TREES REMOVED = 20 REPLACEMENTS 18" - 24" CAL.: 0 TREES REMOVED = 0 REPLACEMENTS 24" - 30" CAL.: 0 TREES REMOVED = 0 REPLACEMENTS > 30" CAL.: 0 TREE REMOVED = 0 REPLACEMENTS</p> <p>TOTAL TREE REPLACEMENTS = 59 (2.5" CAL.)</p>	59 TREES PROPOSED



- NOTES:**
- TOP OF ROOT BALL TO BE 2"-3" ABOVE ADJACENT FINISHED GRADE.
 - REMOVE ALL LABELS, TAGS, OR OTHER FOREIGN MATERIALS FROM LIMBS.
 - REMOVE GUY WIRES, TURNBUCKLES, HOSE AND STAKES 1 YEAR AFTER PLANTING.
 - THE AMOUNT OF PRUNING SHALL BE LIMITED TO THE MINIMUM NECESSARY TO REMOVE DEAD OR INJURED TWIGS AND BRANCHES AND TO COMPENSATE FOR THE LOSS OF ROOTS DURING TRANSPLANTING. RETAIN NORMAL SHAPE OF TREE. OWNERS REPRESENTATIVE WILL DETERMINE AMOUNT OF PRUNING NECESSARY. PLANT TREES AT SAME GRADE AS GROWN IN THE NURSERY.

1 DECIDUOUS TREE PLANTING
N.T.S.



CIVIL ENGINEERING SURVEYING LANDSCAPE ARCHITECTURE
 www.kleingers.com
 350 Worthington Rd. Ste B
 Westerville, OH 43082
 614.882.4311

SEAL:

NO.	DATE	DESCRIPTION

**FAMILY DOLLAR
 COURTRIGHT RD
 COLUMBUS
 FRANKLIN
 COUNTY, OHIO**

PROJECT NO: 160165.002
 DATE: 12.12.2016

SCALE:

SHEET NAME:

**TREE PLANTING
 PLAN**

SHEET NO.

2/3

PLANTING AND PLANTING SOIL SPECIFICATION

THE ENGINEER SHALL BE NOTIFIED PRIOR TO BEGINNING PLANTING OPERATIONS.

REFER TO THE OHIO DEPARTMENT OF TRANSPORTATION CONSTRUCTION AND MATERIAL SPECIFICATIONS (CURRENT EDITION) AND ALL CONSTRUCTION WORK SHALL BE DONE ACCORDING TO SAID SPECIFICATIONS AND IN ACCORDANCE WITH APPLICABLE STANDARDS OF THE GOVERNING AGENCIES. WHEN IN CONFLICT, THE MORE STRINGENT REQUIREMENTS SHALL GOVERN.

PREPARATION OF THE SUBGRADE IN LANDSCAPE AREAS:
 PRIOR TO THE PLACEMENT OF TOPSOIL AND THE ESTABLISHMENT OF THE FINISHED GRADE, THE CONTRACTOR SHALL COORDINATE WITH THE ENGINEER TO INSPECT THE SUBGRADE FOR SUITABILITY FOR PLANTING. IF SUBSURFACE BEDROCK, SHALE, OR OTHER OBSTRUCTIONS ARE ENCOUNTERED IN THE SUBGRADE, THE ENGINEER MAY SELECT ALTERNATE LOCATIONS FOR PLANT PLACEMENTS. WHERE LOCATIONS CANNOT BE CHANGED, THE UNSUITABLE MATERIAL OR OBSTRUCTION SHALL BE REMOVED TO A DEPTH, NO LESS, THAN 6" BELOW BOTTOM OF THE ROOT BALL WHEN THE PLANT IS PROPERLY SET AT THE REQUIRED GRADE. THE ADDITIONAL EXCAVATION SHALL BE FILLED WITH A SUITABLE CLEAN SOIL MATERIAL FREE OF ROCK AND CONSTRUCTION DEBRIS AND SUITABLE FOR THE PLANTING SUBGRADE AS DETERMINED BY THE ENGINEER.

TOPSOIL:
 TOPSOIL PLACEMENT: THE CONTRACTOR SHALL PLACE TOPSOIL IN ALL LANDSCAPED AREAS. TOPSOIL SHALL BE FREE OF JOHNSON GRASS AND CONFORM TO ODOT ITEM 653 AND SHALL BE A FRIABLE LOAM, TYPICAL OF CULTIVATED LOCALLY, CONTAINING AT LEAST 4 PERCENT DECAYED ORGANIC MATER (HUMUS). IT SHALL BE REASONABLE FREE OF SUBSOIL, STONES, EARTH, CLOUDS, STICKS, ROOTS OR OTHER OBJECTIONABLE EXTRANEEOUS MATTER OR DEBRIS. IT SHALL CONTAIN NO TOXIC MATERIALS.

TOPSOIL MAY BE ALTERED, UPON APPROVAL OF THE ENGINEER, BY ADDING APPROVED CONDITIONERS. CONDITIONERS SHALL CONFORM TO ODOT ITEM 653 AS DETERMINED BY THE ENGINEER.

TOPSOIL SHALL BE PLACED TO A DEPTH OF 30" IN ALL TREE PITS AND A MINIMUM OF 6" IN DEPTH IN ALL TURF GRASS AREAS.

PLANTING SOIL PLACEMENT: PLACE PLANTING SOIL IN TWO LIFTS. PLACE THE FIRST LIFT TO A DEPTH OF 2 INCHES AND HARROW OR TILL THE LOAM INTO THE UNDERLYING SUBSOIL TO A DEPTH OF 2 INCHES, CREATING A BLENDED INTERFACE OF LOAM AND SUBSOIL APPROXIMATELY 4 INCHES DEEP. THE CONTRACTOR SHALL INSTALL PLANTING SOIL IN SUCCESSIVE HORIZONTAL LIFTS NO THICKER THAN 6 INCHES IN TURF AREAS AND 12 INCHES IN PLANT BED AREAS TO THE DESIRE COMPACTION AS DESCRIBED HEREIN. THE CONTRACTOR SHALL INSTALL THE SOIL AT A HIGHER LEVEL TO ANTICIPATE ANY REDUCTION OF PLANTING SOIL VOLUME DUE TO COMPACTION, SETTLING, EROSION, DECOMPOSITION, AND OTHER SIMILAR PROCESSES DURING THE WARRANTY PERIOD.

PREPARATION OF FINISHED GRADE:
 THE PREPARATION OF PLANTING AREAS MAY BEGIN PRIOR TO THE SPECIFIED PLANTING SEASON PROVIDED THE FINISHED GRADE HAS BEEN ESTABLISHED AND APPROVED BY THE ENGINEER, AND PROVIDED THAT IN THE JUDGEMENT OF THE ENGINEER, THE GENERAL CONSTRUCTION WORK IS SUFFICIENTLY ADVANCED.

PLANTS:
 GENERAL: FURNISH NURSERY-GROWN PLANTS TRUE TO GENUS, SPECIES, VARIETY, CULTIVAR, STEM FORM, SHEARING, AND OTHER FEATURES INDICATED IN PLANT SCHEDULE OR PLANT LEGEND SHOWN ON DRAWINGS AND COMPLYING WITH ANSI Z60.1; AND WITH HEALTHY ROOT SYSTEMS DEVELOPED BY TRANSPLANTING OR ROOT PRUNING. PROVIDE WELL-SHAPED, FULLY BRANCHED, HEALTHY, VIGOROUS STOCK, DENSELY FOLIATED WHEN IN LEAF AND FREE OF DISEASE, PESTS, EGGS, LARVAE, AND DEFECTS SUCH AS KNOTS, SUN SCALD, INJURIES, ABRASIONS, AND DISFIGUREMENT.

1. PLANT MATERIAL OBSERVATION: ARCHITECT MAY OBSERVE PLANT MATERIAL EITHER AT PLACE OF GROWTH OR AT SITE BEFORE PLANTING FOR COMPLIANCE WITH REQUIREMENTS FOR GENUS, SPECIES, VARIETY, CULTIVAR, SIZE, AND QUALITY. ARCHITECT RETAINS RIGHT TO OBSERVE TREES AND SHRUBS FURTHER FOR SIZE AND CONDITION OF BALLS AND ROOT SYSTEMS, PESTS, DISEASE SYMPTOMS, INJURIES, AND LATENT DEFECTS AND TO REJECT UNSATISFACTORY OR DEFECTIVE MATERIAL AT ANY TIME DURING PROGRESS OF WORK. REMOVE REJECTED TREES OR SHRUBS IMMEDIATELY FROM PROJECT SITE.
2. ALL SUBSTITUTIONS AND PLAN CHANGES MUST BE APPROVED BY OWNER'S REPRESENTATIVE PRIOR TO ANY ACTION TAKEN.
3. DO NOT PRUNE TREES BEFORE DELIVERY. PROTECT BARK, BRANCHES, AND ROOT SYSTEMS FROM SUN SCALD, DRYING, WIND BURN, SWEATING, WHIPPING, AND OTHER HANDLING AND TYING DAMAGE. DO NOT BEND OR BIND-TIE TREES IN SUCH A MANNER AS TO DESTROY THEIR NATURAL SHAPE. PROVIDE PROTECTIVE COVERING OF PLANTS DURING SHIPPING AND DELIVERY. DO NOT DROP PLANTS DURING DELIVERY AND HANDLING.
4. TREES WITH DAMAGED, CROOKED, OR MULTIPLE LEADERS; TIGHT VERTICAL BRANCHES WHERE BARK IS SQUEEZED BETWEEN TWO BRANCHES OR BETWEEN BRANCH AND TRUNK ("INCLUDED BARK"); CROSSING TRUNKS; OR WITH STEM GIRDLING ROOTS WILL BE REJECTED.
5. COLLECTED STOCK: DO NOT USE PLANTS HARVESTED FROM THE WILD, FROM NATIVE STANDS, FROM AN ESTABLISHED LANDSCAPE PLANTING, OR NOT GROWN IN A NURSERY UNLESS OTHERWISE INDICATED.

PROVIDE PLANTS OF SIZES, GRADES, AND BALL OR CONTAINER SIZES COMPLYING WITH ANSI Z60.1 FOR TYPES AND FORM OF PLANTS REQUIRED. PLANTS OF A LARGER SIZE MAY BE USED IF ACCEPTABLE TO ARCHITECT, WITH A PROPORTIONATE INCREASE IN SIZE OF ROOTS OR BALLS.

ROOT-BALL DEPTH: FURNISH TREES AND SHRUBS WITH ROOT BALLS MEASURED FROM TOP OF ROOT BALL, WHICH SHALL BEGIN AT ROOT FLARE ACCORDING TO ANSI Z60.1. ROOT FLARE SHALL BE VISIBLE BEFORE PLANTING.

LABELING: LABEL EACH PLANT OF EACH VARIETY, SIZE, AND CALIPER WITH A SECURELY ATTACHED, WATERPROOF TAG BEARING LEGIBLE DESIGNATION OF COMMON NAME AND FULL SCIENTIFIC NAME, INCLUDING GENUS AND SPECIES. INCLUDE NOMENCLATURE FOR HYBRID, VARIETY, OR CULTIVAR, IF APPLICABLE FOR THE PLANT AS SHOWN ON DRAWINGS.

COMMERCIAL FERTILIZER: COMMERCIAL-GRADE COMPLETE FERTILIZER OF NEUTRAL CHARACTER, CONSISTING OF FAST- AND SLOW-RELEASE NITROGEN, 50 PERCENT DERIVED FROM NATURAL ORGANIC SOURCES OF UREA-FORM, PHOSPHOROUS, AND POTASSIUM.

ORGANIC MULCH: ORGANIC MULCH, FREE FROM DELETERIOUS MATERIALS AND SUITABLE AS A TOP DRESSING OF TREES AND SHRUBS, CONSISTING OF SHREDDED HARDWOOD. NATURAL COLOR.

INSTALLATION:
 THE SEASONS FOR PLANTING SHALL BE MARCH 15TH TO JUNE 15TH AND SEPTEMBER 15TH TO NOVEMBER 15TH, UNLESS OTHERWISE APPROVED BY THE ARCHITECT. NO PLANTING SHALL BE DONE ON FROZEN GROUND OR WHEN THE TEMPERATURE IS 32 DEGREES FAHRENHEIT OF LOWER.

IF FORMAL ARRANGEMENTS OR CONSECUTIVE ORDER OF PLANTS IS SHOWN ON DRAWINGS, SELECT STOCK FOR UNIFORM HEIGHT AND SPREAD, AND NUMBER THE LABELS TO ASSURE SYMMETRY IN PLANTING.

1. EXAMINE AREAS TO RECEIVE PLANTS FOR COMPLIANCE WITH REQUIREMENTS AND FOR CONDITIONS AFFECTING PERFORMANCE OF WORK OF THIS SECTION. DO NOT PROCEED WITH INSTALLATION UNTIL UNSATISFACTORY CONDITIONS HAVE BEEN CORRECTED AND THAT AREAS TO BE PLANTED ARE APPROVED BY OWNER'S REPRESENTATIVE.
2. LAY OUT INDIVIDUAL TREE LOCATIONS AND AREAS FOR MULTIPLE PLANTINGS. STAKE LOCATIONS, OUTLINE AREAS, AND SECURE ARCHITECT'S ACCEPTANCE BEFORE THE START OF PLANTING WORK. MAKE ADJUSTMENTS AS REQUIRED.
3. SET BALLED AND BURLAPPED STOCK PLUMB AND IN CENTER OF PIT OR TRENCH WITH TOP OF BALL TO GRADES AS INDICATED IN THE SECTIONS. PLACE TREE STOCK ON SETTING LAYER OF COMPACTED PLANTING SOIL. REMOVE BURLAP AND WIRE BASKETS FROM TOP HALF OF BALLS, BUT DO NOT REMOVE FROM UNDER BALLS. REMOVE PALLETS, IF ANY, BEFORE SETTING. DO NOT USE PLANTING STOCK IF BALL IS CRACKED OR BROKEN BEFORE OR DURING PLANTING OPERATION. COMPACT PLANTING SOIL TO 85 PERCENT PROCTOR DENSITY. ADD SOIL AND CONTINUE

4. COMPACTING UNTIL THE SOIL PROFILE IN THE BEDS MATCHES THAT OF THE DRAWN SECTIONS. PRUNE ACCORDING TO ANSI A300 STANDARD, LIMIT TO BROKEN, DAMAGED, OR DISEASED BRANCHES. DO NOT CUT TREE LEADERS. PRUNE SHRUBS TO RETAIN NATURAL CHARACTER. SHRUB SIZES INDICATED ARE SIZE AFTER PRUNING.
5. SHOVEL-CUT EDGING: SEPARATE MULCHED AREAS FROM TURF AREAS, CURBS, AND PAVING WITH A 45-DEGREE 4- TO 6-INCH DEEP SHOVEL-CUT EDGE.
6. MULCH BACKFILLED SURFACES OF PITS, TRENCHES, PLANTED AREAS, AND OTHER AREAS INDICATED. APPLY 2 INCHES OF MULCH TO FINISH GRADES INDICATED. PROVIDE MULCH IN A 24 INCH RADIUS AROUND TREES LOCATED IN LAWNS. DO NOT PLACE MULCH WITHIN 3 INCHES OF TRUNKS OR STEMS.
7. BEGIN MAINTENANCE IMMEDIATELY AFTER PLANTS ARE INSTALLED AND CONTINUE UNTIL PLANTINGS ARE ACCEPTABLY HEALTHY AND WELL ESTABLISHED BUT FOR NOT LESS THAN MAINTENANCE PERIOD BELOW. MAINTENANCE PERIOD: 12 MONTHS FROM DATE OF SUBSTANTIAL COMPLETION.
8. ALL TREES SHALL BE SUPPORTED IMMEDIATELY AFTER PLANTING BY STAKING OR GUYING. SEE DETAILS.
9. PERFORM CLEANING DURING INSTALLATION OF LANDSCAPING WORK AND UPON COMPLETION OF THE WORK. REMOVE FROM SITE ALL EXCESS LANDSCAPE RELATED MATERIAL, SOIL DEBRIS AND EQUIPMENT. REPAIR DAMAGE RESULTING FROM LANDSCAPING OPERATIONS. SWEEP AND HOSE DOWN PAVED SURFACES AFFECTED BY LANDSCAPING OPERATIONS. COORDINATE WITH OWNER'S REPRESENTATIVE AND OTHER CONTRACTORS FOR FINAL CLEANUP PRIOR TO CLEANING.

WARRANTY:
 INSTALLER AGREES TO REPAIR OR REPLACE PLANTINGS AND ACCESSORIES THAT FAIL IN MATERIALS, WORKMANSHIP, OR GROWTH WITHIN SPECIFIED WARRANTY PERIOD.

FAILURES INCLUDE, BUT ARE NOT LIMITED TO, THE FOLLOWING:
 DEATH AND UNSATISFACTORY GROWTH, EXCEPT FOR DEFECTS RESULTING FROM ABUSE, LACK OF ADEQUATE MAINTENANCE, OR NEGLIGENCE BY OWNER, OR INCIDENTS THAT ARE BEYOND CONTRACTOR'S CONTROL. STRUCTURAL FAILURES INCLUDING PLANTINGS FALLING OR BLOWING OVER, FAULTY PERFORMANCE OF TREE STABILIZATION AND/ OR EDGINGS.

WARRANTY PERIODS FROM DATE OF SUBSTANTIAL COMPLETION.
 TREES, SHRUBS, VINES, AND ORNAMENTAL GRASSES: 12 MONTHS.
 GROUND COVERS, BIENNIALS, PERENNIALS, AND OTHER PLANTS: 12 MONTHS.

INCLUDE THE FOLLOWING REMEDIAL ACTIONS AS A MINIMUM:
 IMMEDIATELY REMOVE DEAD PLANTS AND REPLACE UNLESS REQUIRED TO PLANT IN THE SUCCEEDING PLANTING SEASON. REPLACE PLANTS THAT ARE MORE THAN 25 PERCENT DEAD OR IN AN UNHEALTHY CONDITION AT END OF WARRANTY PERIOD. A LIMIT OF ONE REPLACEMENT OF EACH PLANT WILL BE REQUIRED EXCEPT FOR LOSSES OR REPLACEMENTS DUE TO FAILURE TO COMPLY WITH REQUIREMENTS. PROVIDE EXTENDED WARRANTY FOR PERIOD EQUAL TO ORIGINAL WARRANTY PERIOD, FOR REPLACED PLANT MATERIAL.

TURF GRASS SPECIFICATION

SUBMITTALS:
 SUBMIT PRODUCT DATA FOR PESTICIDES AND HERBICIDES. INCLUDE PRODUCT LABEL AND MANUFACTURER'S APPLICATION INSTRUCTIONS SPECIFIC TO THIS PROJECT. SUBMIT CERTIFICATION OF GRASS SEED FROM SEED VENDOR FOR EACH GRASS-SEED MONOSTAND OR MIXTURE STATING THE BOTANICAL AND COMMON NAME, PERCENTAGE BY WEIGHT OF EACH SPECIES AND VARIETY, AND PERCENTAGE OF PURITY, GERMINATION, AND WEED SEED. INCLUDE THE YEAR OF PRODUCTION AND DATE OF PACKAGING. INCLUDE IDENTIFICATION OF SOURCE AND NAME AND TELEPHONE NUMBER OF SUPPLIER. SUBMIT QUALIFICATION DATA FOR QUALIFIED LANDSCAPE INSTALLER. SUBMIT PRODUCT CERTIFICATES FOR FERTILIZERS FROM MANUFACTURER. SUBMIT MAINTENANCE INSTRUCTIONS FOR RECOMMENDED PROCEDURES TO BE ESTABLISHED BY OWNER FOR MAINTENANCE OF TURF DURING A CALENDAR YEAR. SUBMIT BEFORE EXPIRATION OF REQUIRED INITIAL MAINTENANCE PERIODS.

INSTALLER QUALIFICATIONS:
 INSTALLER SHALL BE A QUALIFIED LANDSCAPE INSTALLER WHOSE WORK HAS RESULTED IN SUCCESSFUL TURF AND WETLANDS ESTABLISHMENT. PROFESSIONAL MEMBERSHIP: INSTALLER SHALL BE A MEMBER IN GOOD STANDING OF EITHER THE PROFESSIONAL LANDSCAPE NETWORK OR THE AMERICAN NURSERY AND LANDSCAPE ASSOCIATION. EXPERIENCE: FIVE YEARS' EXPERIENCE IN TURF INSTALLATION. INSTALLER TO MAINTAIN AN EXPERIENCED FULL-TIME SUPERVISOR ON PROJECT SITE WHEN WORK IS IN PROGRESS. INSTALLER'S FIELD SUPERVISOR SHALL HAVE CERTIFICATION AS A CERTIFIED LANDSCAPE TECHNICIAN - EXTERIOR, WITH INSTALLATION, MAINTENANCE, AND IRRIGATION SPECIALTY AREAS, DESIGNATED CLT-EXTERIOR AND AS A STATE LICENSED, COMMERCIAL PESTICIDE APPLICATOR.

DELIVER PACKAGED MATERIALS IN ORIGINAL, UNOPENED CONTAINERS SHOWING WEIGHT, CERTIFIED ANALYSIS, NAME AND ADDRESS OF MANUFACTURER, AND INDICATION OF CONFORMANCE WITH STATE AND FEDERAL LAWS, AS APPLICABLE. DO NOT DUMP OR STORE BULK MATERIALS NEAR STRUCTURES, UTILITIES, WALKWAYS AND PAVEMENTS, OR ON EXISTING TURF AREAS OR PLANTS. ACCOMPANY EACH DELIVERY OF BULK FERTILIZERS, LIME, AND SOIL AMENDMENTS WITH APPROPRIATE CERTIFICATES.

PLANTING RESTRICTIONS:
 PLANT DURING ONE OF THE FOLLOWING PERIODS. COORDINATE PLANTING PERIODS WITH INITIAL MAINTENANCE PERIODS TO PROVIDE REQUIRED MAINTENANCE FROM DATE OF PLANTING COMPLETION. SPRING SEEDING: MARCH 15 TO JUNE 1; FALL SEEDING: AUGUST 15 TO NOVEMBER 1.

PROCEED WITH PLANTING ONLY WHEN EXISTING AND FORECASTED WEATHER CONDITIONS PERMIT PLANTING TO BE PERFORMED WHEN BENEFICIAL AND OPTIMUM RESULTS MAY BE OBTAINED. APPLY PRODUCTS DURING FAVORABLE WEATHER CONDITIONS ACCORDING TO MANUFACTURER'S WRITTEN INSTRUCTIONS.

GRASS SEED:
 FRESH, CLEAN, DRY, NEW-CROP SEED COMPLYING WITH AOSA'S "JOURNAL OF SEED TECHNOLOGY; RULES FOR TESTING SEEDS" FOR PURITY AND GERMINATION TOLERANCES.

- SEED SPECIES: STATE CERTIFIED SEED OF GRASS SPECIES, AS FOLLOWS:
 ALL SEED SPECIES SHALL RATE IN NTEP'S TOP TEN. TURF GRASS SEED MIX SHALL CONTAIN:
1. 80% TURF TYPE TALL FESCUE, CONSISTING OF 3 VARIETIES, EACH SELECTED VARIETY SHALL REPRESENT A MINIMUM OF 15% OF THE AGGREGATE SEED.
 2. 10% PREMIUM PERENNIAL RYE GRASS.
 3. 10% PREMIUM KENTUCKY BLUEGRASS.

GERMINATION RATE OF 95% MINIMUM. NOXIOUS WEED CONTENT OF 0% MAXIMUM. 100% PURE SEED.

COMMERCIAL FERTILIZER:
 COMMERCIAL-GRADE COMPLETE FERTILIZER OF NEUTRAL CHARACTER, CONSISTING OF FAST- AND SLOW-RELEASE NITROGEN, 50 PERCENT DERIVED FROM NATURAL ORGANIC SOURCES OF UREA FORMALDEHYDE, PHOSPHOROUS, AND POTASSIUM IN THE COMPOSITION RECOMMENDED TO REMEDY DEFICIENCIES FOUND IN SOIL TESTS.

SLOW-RELEASE FERTILIZER:
 GRANULAR OR PELLETTED FERTILIZER CONSISTING OF 50 PERCENT WATER-INSOLUBLE NITROGEN, PHOSPHORUS, AND POTASSIUM IN THE COMPOSITION RECOMMENDED TO REMEDY DEFICIENCIES FOUND IN SOIL TESTS.

MULCHES:
 STRAW MULCH: PROVIDE AIR-DRY, CLEAN, MILDEW- AND SEED-FREE, SALT HAY OR THRESHED STRAW OF WHEAT, RYE, OATS, OR BARLEY.

PESTICIDES:
 REGISTERED AND APPROVED BY EPA, ACCEPTABLE TO AUTHORITIES HAVING JURISDICTION, AND OF TYPE RECOMMENDED BY MANUFACTURER FOR EACH SPECIFIC PROBLEM AND AS REQUIRED FOR PROJECT CONDITIONS AND APPLICATION. DO NOT USE RESTRICTED PESTICIDES UNLESS AUTHORIZED IN

WRITING BY AUTHORITIES HAVING JURISDICTION.

PRE-EMERGENT HERBICIDE (SELECTIVE AND NON-SELECTIVE): EFFECTIVE FOR CONTROLLING THE GERMINATION OR GROWTH OF WEEDS WITHIN PLANTED AREAS AT THE SOIL LEVEL DIRECTLY BELOW THE MULCH LAYER.

POST-EMERGENT HERBICIDE (SELECTIVE AND NON-SELECTIVE): EFFECTIVE FOR CONTROLLING WEED GROWTH THAT HAS ALREADY GERMINATED.

REFER TO "PLANTING SPECIFICATIONS" FOR PLANTING SOIL DEPTH AND PLACEMENT.

FINISH GRADING:
 GRADE PLANTING AREAS TO A SMOOTH, UNIFORM SURFACE PLANE WITH LOOSE, UNIFORMLY FINE TEXTURE. GRADE TO WITHIN PLUS OR MINUS 1/2 INCH OF FINISH ELEVATION. ROLL AND RAKE, REMOVE RIDGES, AND FILL DEPRESSIONS TO MEET FINISH GRADES. LIMIT FINISH GRADING TO AREAS THAT CAN BE PLANTED IN THE IMMEDIATE FUTURE. MOISTEN PREPARED AREA BEFORE PLANTING IF SOIL IS DRY. WATER THOROUGHLY AND ALLOW SURFACE TO DRY BEFORE PLANTING. DO NOT CREATE MUDDY SOIL BEFORE PLANTING. OBTAIN FIELD ENGINEER'S ACCEPTANCE OF FINISH GRADING; RESTORE PLANTING AREAS IF ERODED OR OTHERWISE DISTURBED AFTER FINISH GRADING.

PROTECT SEEDED AREAS BY SPREADING STRAW MULCH. SPREAD UNIFORMLY AT A MINIMUM RATE OF 2 TONS/ACRE TO FORM A CONTINUOUS BLANKET 1-1/2 INCHES IN LOOSE THICKNESS OVER SEEDED AREAS. SPREAD BY HAND, BLOWER, OR OTHER SUITABLE EQUIPMENT. ANCHOR STRAW MULCH BY CRIMPING INTO SOIL WITH SUITABLE MECHANICAL EQUIPMENT.

INITIAL TURF MAINTENANCE SERVICE:
 PROVIDE FULL MAINTENANCE BY SKILLED EMPLOYEES OF LANDSCAPE INSTALLER. BEGIN MAINTENANCE IMMEDIATELY AFTER EACH AREA IS PLANTED AND CONTINUE UNTIL ACCEPTABLE TURF IS ESTABLISHED BUT FOR NOT LESS THAN THE FOLLOWING PERIODS: SEEDED TURF: 60 DAYS FROM DATE OF PLANTING COMPLETION. WHEN INITIAL MAINTENANCE PERIOD HAS NOT ELAPSED BEFORE END OF PLANTING SEASON, OR IF TURF IS NOT FULLY ESTABLISHED, CONTINUE MAINTENANCE DURING NEXT PLANTING SEASON.

MAINTAIN AND ESTABLISH TURF BY WATERING, FERTILIZING, WEEDING, MOWING, TRIMMING, REPLANTING, AND PERFORMING OTHER OPERATIONS AS REQUIRED TO ESTABLISH HEALTHY, VIABLE TURF. ROLL, REGRADE, AND REPLANT BARE OR ERODED AREAS AND REMULCH TO PRODUCE A UNIFORMLY SMOOTH TURF. PROVIDE MATERIALS AND INSTALLATION THE SAME AS THOSE USED IN THE ORIGINAL INSTALLATION. FILL IN AS NECESSARY SOIL SUBSIDENCE THAT MAY OCCUR BECAUSE OF SETTLING OR OTHER PROCESSES. REPLACE MATERIALS AND TURF DAMAGED OR LOST IN AREAS OF SUBSIDENCE.

APPLY TREATMENTS AS REQUIRED TO KEEP TURF AND SOIL FREE OF PESTS AND PATHOGENS OR DISEASE. USE INTEGRATED PEST MANAGEMENT PRACTICES WHENEVER POSSIBLE TO MINIMIZE THE USE OF PESTICIDES AND REDUCE HAZARDS.

WHERE THERE IS NO IRRIGATION, INSTALL AND MAINTAIN TEMPORARY PIPING, HOSES, AND TURF-WATERING EQUIPMENT TO AREAS NOT IRRIGATED TO CONVEY WATER FROM SOURCES AND TO KEEP TURF UNIFORMLY MOIST TO A DEPTH OF 4 INCHES. SCHEDULE WATERING TO PREVENT WILTING, PUDDLING, EROSION, AND DISPLACEMENT OF SEED OR MULCH. LAY OUT TEMPORARY WATERING SYSTEM TO AVOID WALKING OVER MUDDY OR NEWLY PLANTED AREAS. WATER TURF WITH FINE SPRAY AT A MINIMUM RATE OF 1 INCH PER WEEK UNLESS RAINFALL PRECIPITATION IS ADEQUATE.

MOW TURF AS SOON AS TOP GROWTH IS TALL ENOUGH TO CUT. REPEAT MOWING TO MAINTAIN SPECIFIED HEIGHT WITHOUT CUTTING MORE THAN 1/3 OF GRASS HEIGHT. REMOVE NO MORE THAN 1/3 OF GRASS-LEAF GROWTH IN INITIAL OR SUBSEQUENT MOWINGS. DO NOT DELAY MOWING UNTIL GRASS BLADES BEND OVER AND BECOME MATTED. DO NOT MOW WHEN GRASS IS WET. SCHEDULE INITIAL AND SUBSEQUENT MOWINGS TO MAINTAIN THE GRASS TO A HEIGHT OF 2-3 INCHES.

IF A SLOW-RELEASE FERTILIZER IS NOT INITIALLY USED, APPLY FERTILIZER AFTER INITIAL MOWING AND WHEN GRASS IS DRY. USE SLOW-RELEASE FERTILIZER THAT WILL PROVIDE ACTUAL NITROGEN OF AT LEAST 1 LB/1000 SQ. FT. TO TURF AREA.

TURF INSTALLATIONS SHALL MEET THE FOLLOWING CRITERIA AS DETERMINED BY ARCHITECT:
 1. SEEDED TURF: AT END OF MAINTENANCE PERIOD, A HEALTHY, UNIFORM, CLOSE STAND OF GRASS HAS BEEN ESTABLISHED, FREE OF WEEDS AND SURFACE IRREGULARITIES, WITH COVERAGE EXCEEDING 95 PERCENT OVER ANY 10 SQ. FT. AND BARE SPOTS NOT EXCEEDING 5 BY 5 INCHES. USE SPECIFIED MATERIALS TO REESTABLISH TURF THAT DOES NOT COMPLY WITH REQUIREMENTS AND CONTINUE MAINTENANCE UNTIL TURF IS SATISFACTORY.

PROMPTLY REMOVE SOIL AND DEBRIS CREATED BY TURF WORK FROM PAVED AREAS. CLEAN WHEELS OF VEHICLES BEFORE LEAVING SITE TO AVOID TRACKING SOIL ONTO ROADS, WALKS, OR OTHER PAVED AREAS. ERECT TEMPORARY FENCING OR BARRICADES AND WARNING SIGNS AS REQUIRED TO PROTECT NEWLY PLANTED AREAS FROM TRAFFIC. MAINTAIN FENCING AND BARRICADES THROUGHOUT INITIAL MAINTENANCE PERIOD AND REMOVE AFTER PLANTINGS ARE ESTABLISHED.



THE KLEINGERS GROUP

CIVIL ENGINEERING SURVEYING LANDSCAPE ARCHITECTURE

www.kleingers.com

350 Worthington Rd, Ste B Westerville, OH 43082 614.882.4311

SEAL:

NO.	DATE	DESCRIPTION

FAMILY DOLLAR COURTRIGHT RD COLUMBUS FRANKLIN COUNTY, OHIO

PROJECT NO:	160165.002
DATE:	12.12.2016
SCALE:	

SHEET NAME:

PLANTING SPECIFICATIONS

SHEET NO.

3/3

P:\Columbus\F160165.DWG\002 SHEETS\001\001\002.dwg, 12/12/2016 2:39:35 PM, rmp/abz