

NOTES:

1. THE CONDUIT SHALL PASS UNDER CURB DRAIN. EXACT ELEVATION MAY VARY (30" MIN.-48" MAX) TO AVOID EXISTING UTILITIES IN THE ROADWAY.
2. CONTRACTOR SHALL REPLACE, REPAIR AND REALIGN ANY CURB OR CURB DRAINS BROKEN, DISTURBED OR REMOVED DURING INSTALLATION OF CONDUIT.

I. MATERIAL

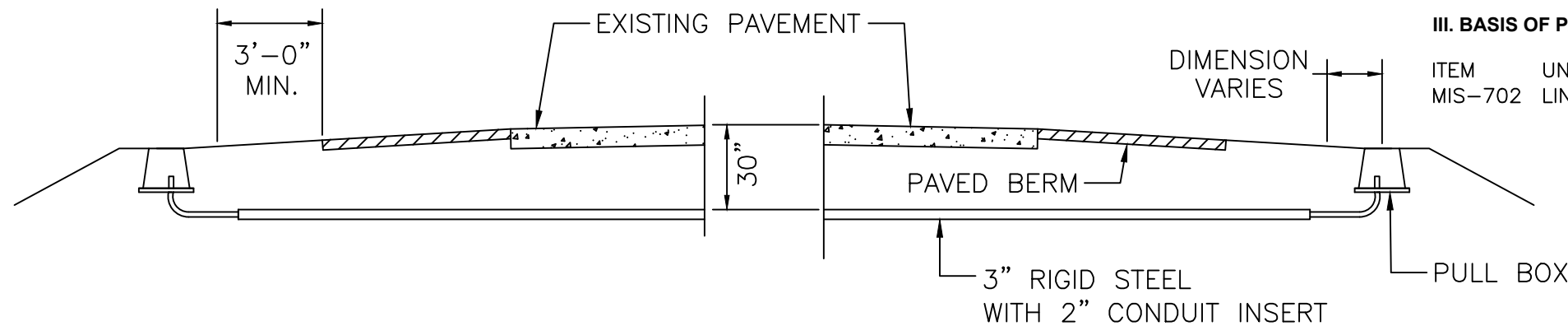
- A. THE 3" RIGID STEEL CONDUIT SHALL BE HOT DIPPED GALVANIZED AND SECONDARY COATED PRODUCED TO ANSI SPECIFICATIONS C-80.1 AND MEET REQUIREMENTS OF UNDERWRITERS LABORATORIES UL-6. BOTH ENDS SHALL BE THREADED. THE CONDUIT SHALL BE OMEGA TUBE & CONDUIT CORP., REPUBLIC CONDUIT OR APPROVED EQUAL.
- B. THE 2" CONDUIT SHALL BE SCHEDULE 40 PVC TYPE EPC-40-PVC AND MEET THE REQUIREMENTS OF NEMA STANDARDS PUBLICATION TC-2-1983.
- C. THE COUPLINGS SHALL BE THE SAME MATERIAL AS THE CONDUIT.
- D. PULL BOX SHALL BE AS PER MIS-54 OR MIS-61 AS REQUIRED, AND PAID FOR SEPARATELY FROM THIS SPECIFICATION.

II. INSTALLATION

- A. THE CONTRACTOR MAY INSTALL THE 3" RIGID STEEL WITH 2" PVC CONDUIT INSERT BY EITHER PUSHING, JACKING, OR DRILLING THE CONDUIT, OR OPEN CUTTING A TRENCH FOR DIRECT INSTALLATION OF THE CONDUIT INTO THE GROUND. THE TRENCH SHALL BE INSTALLED PER CMS 1001.10, AND THE CONDUIT INSTALLED PER CMS 1001.11.
- B. WHEN JACKING, DRILLING OR PUSHING, THE CONTRACTOR SHALL PLACE THE PUSH PIT WITH THE LEAST AMOUNT OF DISTURBANCE TO THE EXISTING PAVEMENT, BERM PAVEMENT OR SHOULDERS OF THE ROADWAY.
- C. THE CONTRACTOR SHALL EXERCISE CARE NOT TO DAMAGE THE RIGID CONDUIT DURING INSTALLATION. DAMAGED SECTIONS OF CONDUIT ARE NOT ACCEPTABLE AND SHALL BE REPLACED WITH NEW CONDUIT INSTALLED IN THE HOLE OR BE RE-PUSHED. THE CONDUIT SHALL BE EXTENDED A MINIMUM OF 3' BEYOND THE PAVEMENT BERM UNLESS OTHERWISE DIRECTED BY THE ENGINEER.
- D. THE 2" NON-METALLIC CONDUIT SHALL BE CAREFULLY INSERTED THROUGH THE FULL LENGTH OF THE 3" CONDUIT AND BE CONTINUOUS FROM PULL BOX TO PULL BOX.
- E. THE CONTRACTOR MAY REMOVE A SECTION OF SIDEWALK FROM ONE SIDE OF THE STREET FOR DIRECTIONAL DRILLING WHERE CONDUIT CROSSES THE STREET. REFER TO CITY OF COLUMBUS, DEPARTMENT OF PUBLIC SERVICE STD DWG 1441 FOR SIDEWALK REPAIR.
- F. THE 3" RIGID STEEL WITH 2" CONDUIT INSERT SHALL BE INSTALLED AS SHOWN.

III. BASIS OF PAYMENT

ITEM	UNIT	DESCRIPTION
MIS-702	LINEAR FOOT	3" RIGID STEEL WITH 2" CONDUIT INSERT



MIS-702	DEPARTMENT OF PUBLIC UTILITIES - DIVISION OF POWER CITY OF COLUMBUS, OHIO		
	3" RIGID STEEL WITH 2" CONDUIT INSERT		
	DRAWN BY: SAW	DATE: 1/1/24	
	SCALE: NONE	SHEET: 1 OF 1	702