

I. MATERIALS

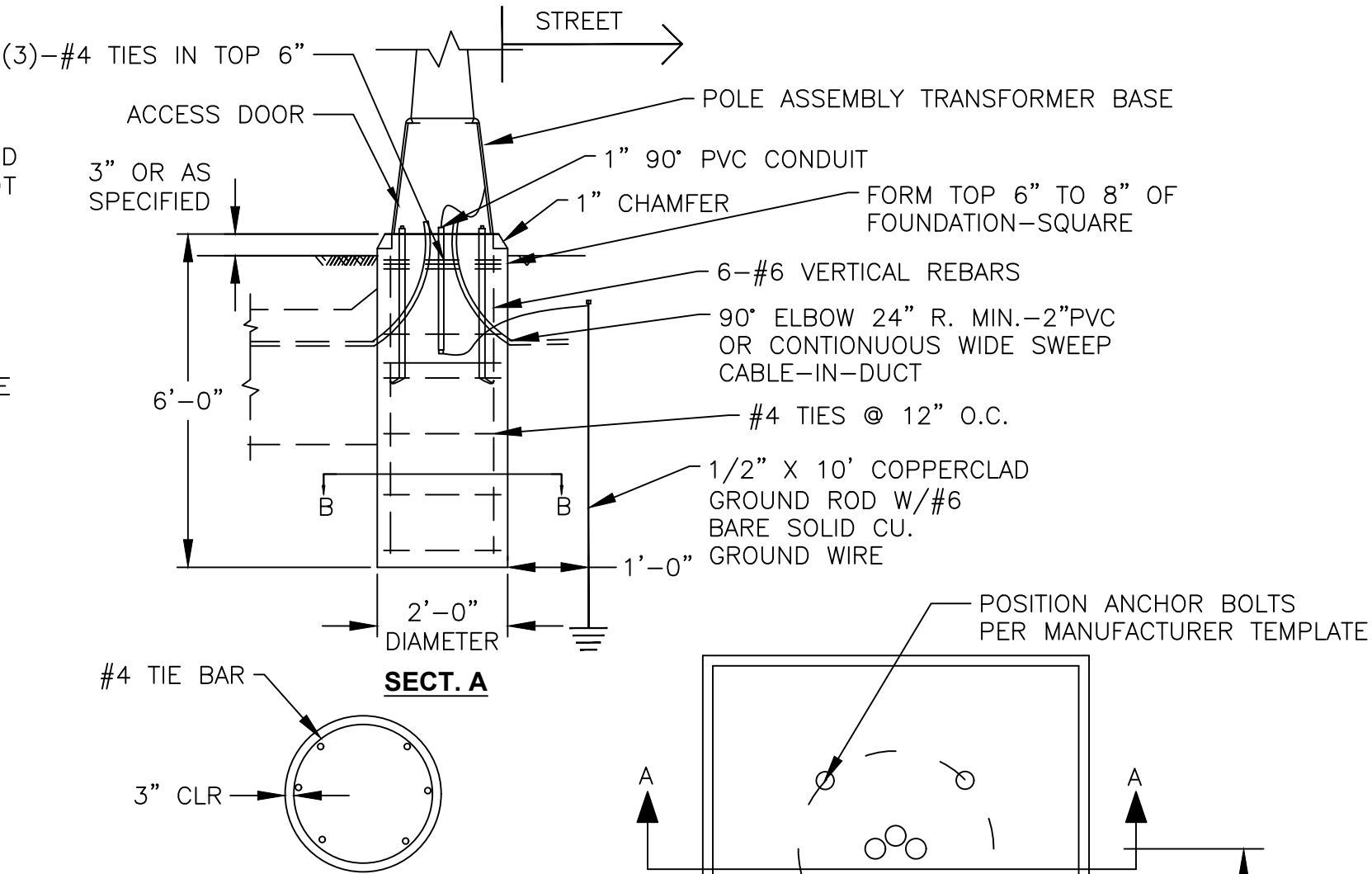
- A. THE CONCRETE SHALL BE AS SPECIFIED IN ITEM 499 OF THE CITY OF COLUMBUS CONSTRUCTION AND MATERIALS SPECIFICATIONS CLASS C CONCRETE.
- B. THE ANCHOR BOLTS SHALL BE AS SUPPLIED BY THE POLE MANUFACTURER AND SHALL BE NO LESS THAN 1" DIAMETER X 36"+4" (HOOK) AND SHALL BE HOT DIPPED GALVANIZED. (SEE NOTES 3 AND 4)
- C. ALL SHIMS AND NUTS SHALL BE HOT DIPPED GALVANIZED.
- D. CONDUIT ELLS SHALL BE 2", 90-DEGREES SWEEP, 24 INCH RADIUS SCHEDULE 40 PVC, CARLON, HERITAGE, CANTEX PV-CONDUIT OR APPROVED EQUAL, ON OPEN TRENCH INSTALLATION. 2" CABLE-IN-DUCT SHALL BE A CONTINUOUS WIDE SWEEP INTO THE FOUNDATION.
- E. THE GROUND ROD SHALL BE 1/2" X 10', COPPER CLAD (BLACKBURN #5008, GALVAN OR APPROVED EQUAL), AND SHALL UTILIZE 1" SCHEDULE 40 PVC CONDUIT, 90 DEGREES SWEEP WITH 24 INCH RADIUS, CARLON, HERITAGE, CANTEX OR APPROVED EQUAL.
- F. ALL REINFORCING BARS SHALL BE FORMED STEEL OF THE SIZE INDICATED ON THE DRAWING.
- G. THE GROUND ROD CLAMP SHALL BE BLACKBURN #JAB 1/2H, GALVAN G-5 OR APPROVED EQUAL.
- H. THE GROUND WIRE SHALL BE #6 AWG SOFT DRAWN BARE SOLID COPPER.

II. INSTALLATION

- A. THE FOUNDATIONS SHALL BE AS SHOWN.
- B. AT EACH LOCATION THE SIDEWALK SHALL BE SAW CUT, THE CONCRETE REMOVED AND AN EXCAVATION MADE IN THE EARTH LARGE ENOUGH TO ACCOMMODATE THE COMPLETE FOUNDATION. THE EXCESS EARTH AND MATERIALS SHALL BE HAULED AWAY FROM THE SITE AND THE HOLE SHALL BE CLEAN AND FIRM TO RECEIVE THE CONCRETE.
- C. THE TOP 6" TO 8" OF FOUNDATION SHALL BE SQUARE.
- D. THE FORMS TO HOLD THE ANCHOR BOLTS, CONDUIT ELLS, ETC., DURING THE POURING OF THE CONCRETE SHALL BE WOOD OR METAL.
- E. THE SIDEWALK SHALL BE REPLACED WITHIN THE EXPANSION JOINTS OF THE FOUR FOOT AREA AROUND THE FOUNDATIONS AFTER FOUNDATIONS HAVE BEEN ALLOWED TO SET AND THE BACKFILL EARTH HAS BEEN FIRMLY TAMPED.
- F. THE ACCESS PANEL SHALL BE PLACED PERPENDICULAR TO VEHICULAR TRAFFIC.

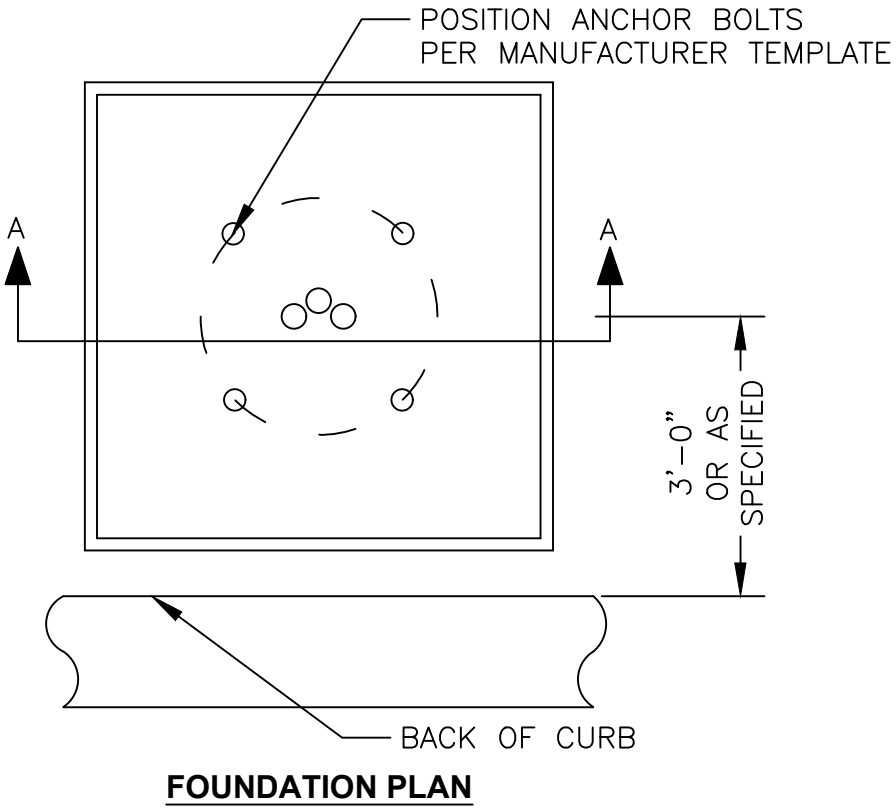
III. BASIS OF PAYMENT

ITEM	UNIT	DESCRIPTION
MIS-201	EACH	STREET LIGHT FOUNDATION, 6'
MIS-201	EACH	STREET LIGHT FOUNDATION, 6', POLE RELOCATION



NOTES:

- ALL REINFORCING SHALL HAVE A MINIMUM OF 3" OF CONCRETE COVER.
- REFER TO CITY OF COLUMBUS, DEPARTMENT OF PUBLIC SERVICE STD DWG 2300 & 2301 FOR SIDEWALK CONSTRUCTION.
- FOR NEW POLE INSTALLATIONS, ANCHOR BOLTS SHALL BE PAID FOR UNDER THE APPROPRIATE POLE SPECIFICATION FOR THE PROJECT. THE PROJECT MUST SPECIFY MIS-201 UTILIZING PAY ITEM "STREET LIGHT FOUNDATION 6'," WITH THE APPROPRIATE QUANTITY.
- FOR POLE RELOCATIONS, ANCHOR BOLTS SHALL BE PAID UNDER THIS SPECIFICATION AS PAY ITEM "STREET LIGHT FOUNDATION, 6', POLE RELOCATION".



MIS-201

DEPARTMENT OF PUBLIC UTILITIES - DIVISION OF POWER CITY OF COLUMBUS, OHIO		
STREET LIGHT FOUNDATION, 6'		
DRAWN BY: SAW	DATE: 12/24/24	
APPROVED:		
SCALE: NONE	SHEET: 1 OF 1	201