

I. MATERIALS

- A. THE GROUND ROD SHALL BE 1/2" X 10' COPPERWELD.
- B. THE GROUND ROD CONNECTOR SHALL BE BLACKBURN #JAB 1/2H, JOSLYN #J8591H OR APPROVED EQUAL.
- C. THE GROUND ROD MOLDING SHALL BE TREATED WOOD, 8' LONG, 1" WIDE, JOSLYN #EEI-1/2 OR APPROVED EQUAL.
- D. THE GROUND WIRE SHALL BE #6 SOLID SOFT DRAWN BARE COPPER OR #4 SOLID TINNED ANTI-THEFT BARE COPPER.
- E. THE STAPLES USED TO SECURE THE MOLDING AND GROUND WIRE TO THE POLE SHALL BE ROLLED DIAMOND POINT COPPER COATED.
- F. COMPRESSION CONNECTORS TYPE "H", "C" OR ETC. (COPPER ALUMINUM, BI-METAL, ECT.) BURNDY, BLACKBURNY OR APPROVED EQUIVALENT.

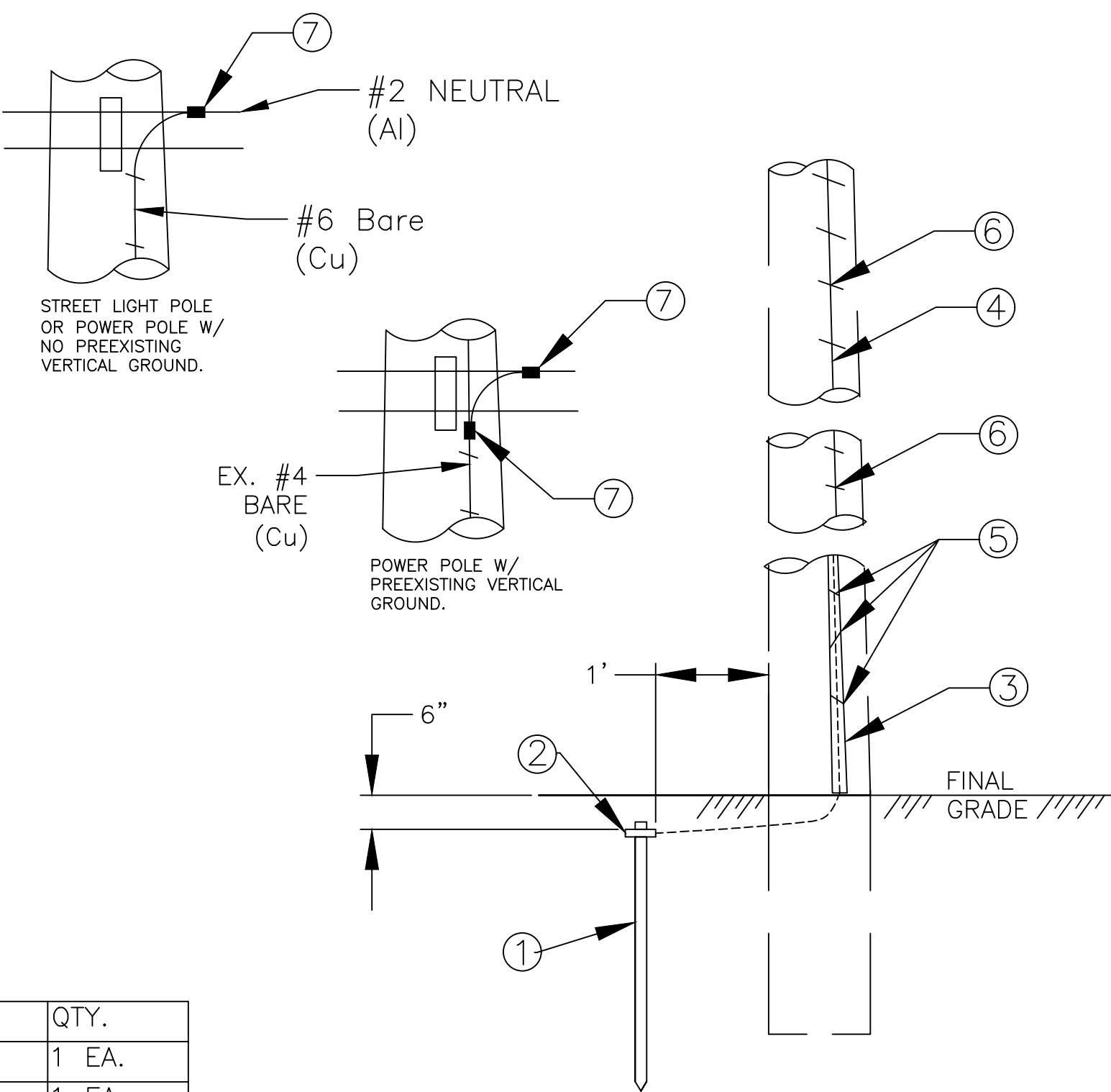
II. INSTALLATION

- A. THE INSTALLATION SHALL BE AS SHOWN AND INSTALLED ON WOOD POLES ONLY.
- B. THE GROUND WIRE SHALL BE CONNECTED TO THE CIRCUIT USING A COMPRESSION CONNECTOR. THE BOTTOM STAPLES SHALL BE 3" IN LENGTH & INSTALLED 6" O.C. & IN AN ALTERNATING PATTERN, TO 8" ABOVE GRADE.
- C. THE GROUND WIRE SHALL BE FASTENED TO THE POLE AND CONNECTED TO THE GROUND ROD.
- D. THE MOLDING SHALL BE NEATLY INSTALLED OVER THE GROUND WIRE.

III. BASIS OF PAYMENT

ITEM	UNIT	DESCRIPTION
MIS-55	EACH	GROUND ROD

ITEM	DESCRIPTION	QTY.
1	ROD, GROUND,1/2"X10'-0" COPPERWELD	1 EA.
2	CLAMP, GROUND ROD, 1/2", COPPER ALLOY	1 EA.
3	MOLDING, GROUND WIRE, 8' LENGTH	1 EA.
4	CONDUCTOR, #6 SOLID SOFT DRAWN OR #4 TINNED ANTI-THEFT BARE COPPER	AS REQ'D
5	STAPLE, 1-1/2"X3" LENGTH	AS REQ'D
6	STAPLE, 3/8"X1-1/2" LENGTH	AS REQ'D
7	CONNECTORS, COMPRESSION-SIZE AS REQUIRED	AS REQ'D



MIS-55

DEPARTMENT OF PUBLIC UTILITIES - DIVISION OF POWER CITY OF COLUMBUS, OHIO		
OVERHEAD STREET LIGHTING CIRCUIT GROUNDING/BONDING		
DRAWN BY: SAW	DATE: 2/5/25	
APPROVED:		
SCALE: NONE	SHEET: 1 OF 1	55