

I. MATERIAL

- A. THE DUPLEX ALUMINUM SELF-SUPPORTING CABLE SHALL CONSIST OF ONE ALL ALUMINUM #2 AWG, 7 STRAND CONDUCTOR AND ONE ACSR #2 AWG, 6/1 STRAND CONDUCTOR. THE #2 AWG, 7 STRAND ALUMINUM CONDUCTORS SHALL HAVE 0.045 INCHES OF BLACK, CROSS-LINKED POLYETHYLENE INSULATION RATED AT 600 VOLT. THE ACSR #2 AWG, 6/1 STRAND CONDUCTOR SHALL BE BARE. INDUSTRY CODE NAME "CHOW".

THE INSULATION SHALL BE CHEMICALLY CROSS-LINKED, LIGHT AND HEAT RESISTANT, THERMOSETTING POLYETHYLENE AND COMPLY WITH THE LATEST ASA SPECIFICATION NO. C8.35, AND ICEA S-19-81.

THE ALUMINUM WIRE SHALL COMPLY WITH THE LATEST APPLICABLE ASTM B230/B230M, B231/B231M, B-232/B232M, B399/B399M, AND B786/786M SPECIFICATIONS FOR ALUMINUM WIRE AND STRANDED ELECTRICAL CONDUCTORS.

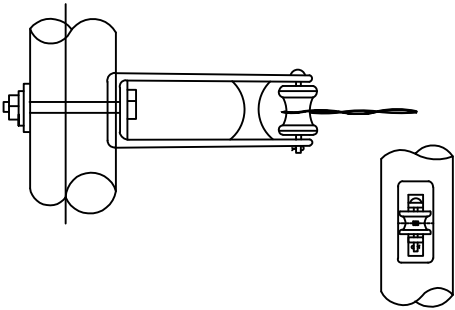
- B. THE SECONDARY RACKS SHALL BE HEAVY DUTY, HOT DIPPED GALVANIZED STEEL, WITH SINGLE 3" SPOOL INSULATOR TO PORCELAIN PRODUCTS #5101, MACLEAN J1399 OR APPROVED EQUAL.
- C. THE SPLICES SHALL BE ALUMINUM COMPRESSION TYPE, EQUAL TO HUBBELL / BURNDY HYLINEK PRODUCTS.
- D. THE TIE WIRES SHALL BE #6 ALUMINUM.
- E. THE THROUGH BOLTS, NUTS, AND WASHERS SHALL BE HOT DIPPED GALVANIZED, 5/8" DIAMETER. THE THROUGH BOLTS SHALL BE 5/8" WITH LENGTH AS REQUIRED BASED ON POLE DIAMETER. THE SQUARE WASHER SHALL BE 2-1/4" X 2-1/4" CURVE AND AN 11/16" HOLE. THE LOCK WASHER SHALL BE SPRING LOCK STYLE WITH AN 11/16" HOLE.
- F. THE INSULATING PADS SHALL BE APPROXIMATELY 3-1/4" X 4-1/2" X 0.125" SCOTCH #2200 OR APPROVED EQUAL.

II. INSTALLATION

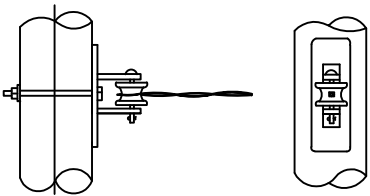
- A. THE OVERHEAD CIRCUIT SHALL BE INSTALLED IN THE LOCATIONS SHOWN ON THE CONTRACT DRAWINGS AND INDICATED IN THE FIELD BY THE ENGINEER. THE DESIGN ENGINEER SHALL MEASURE CABLE FROM CENTER OF POLE TO CENTER OF POLE AND INCLUDE AN ALLOWANCE OF AN ADDITIONAL TEN PERCENT TO ALLOW FOR SAG AND CONNECTIONS.
- B. NO MID-SPAN SPLICING WILL BE PERMITTED. SPLICING IS ONLY PERMITTED AT CONDUCTOR DEAD ENDS.
- C. THE CONDUCTOR SHALL BE STRUNG AND SAGGED IN ACCORDANCE WITH THE NATIONAL ELECTRIC SAFETY CODE, AND MANUFACTURER PROVIDED SAG AND TENSION CHARTS.

III. BASIS OF PAYMENT

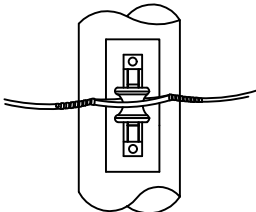
ITEM	UNIT	DESCRIPTION
MIS-401	LINEAR FEET	OVERHEAD CIRCUIT, 2 WIRE-#2 DUPLEX "CHOW"



Secondary Extension Rack
Dead-End & In-Line



Secondary Rack
Dead-end & In-Line



Tie Wires



Preformed Coated Dead-End

MIS-401

DEPARTMENT OF PUBLIC UTILITIES - DIVISION OF POWER CITY OF COLUMBUS, OHIO		
OVERHEAD CIRCUIT, 2 WIRE- # 2 DUPLEX "CHOW"		
DRAWN BY: SAW	DATE: 11/21/24	
SCALE: NONE	SHEET: 1 OF 1	401