



Department Description

Columbus Public Health (CPH) is governed by a five member Board of Health, and works to protect the Columbus community from disease and other public health threats by ensuring that all residents and visitors are empowered to live healthier, safer lives. CPH offers a range of programs in the areas of environmental, neighborhood, family, population, clinical health, sexual health promotion, and addiction services.

Department Mission

To protect residents' health and improve lives in our community.

Columbus Public Health protects, promotes, and monitors the health of the public by:

- Assuring compliance with public health laws, mandates, and regulations;
- Establishing policy to address health issues and emerging health threats;
- Providing preventative, environmental, community, clinical, and home-based services.

Diverse **clinical and family health services** are provided to Columbus residents including women's health, family planning, primary care, sexual health, immunizations, health screenings, infant health, dental care, and many others. In recent years, the department has been a community leader in efforts to address infant mortality, violent crime, and the opiate crisis.

A renewed focus on **sexual health promotion** seeks to prevent HIV and other sexually transmitted infections (STI) through education, testing and treatment. Promoting sexual health requires disease identification, investigation and treatment, which needs to address both the medical and social circumstances related to health. Sexual health promotion also contributes to the development of best practices through specialized HIV and STI evaluation programs in collaboration with federal partners.

Budget Summary				
Fund	2019 Actual	2020 Actual	2021 Budget	2022 Proposed
Health Operating Fund	34,440,030	28,031,999	41,729,513	39,476,663
Department Total	\$ 34,440,030	\$ 28,031,999	\$ 41,729,513	\$ 39,476,663

Public Health

Columbus Public Health's **addiction services** area provides programs and activities related to drug and alcohol addiction, and oversight and coordination of the Columbus and Franklin County Addiction Plan, a collaborative community response addressing the opioid crisis. The department identifies the resources needed to effectively implement the action plan, and manages and coordinates addiction services including prevention, treatment, and harm reduction.

The department also works to prevent or reduce risks from environmental hazards. **Environmental health** programs seek to prevent disease or injury associated with food, water, air, animals, vectors, hazardous materials, and hazardous waste.

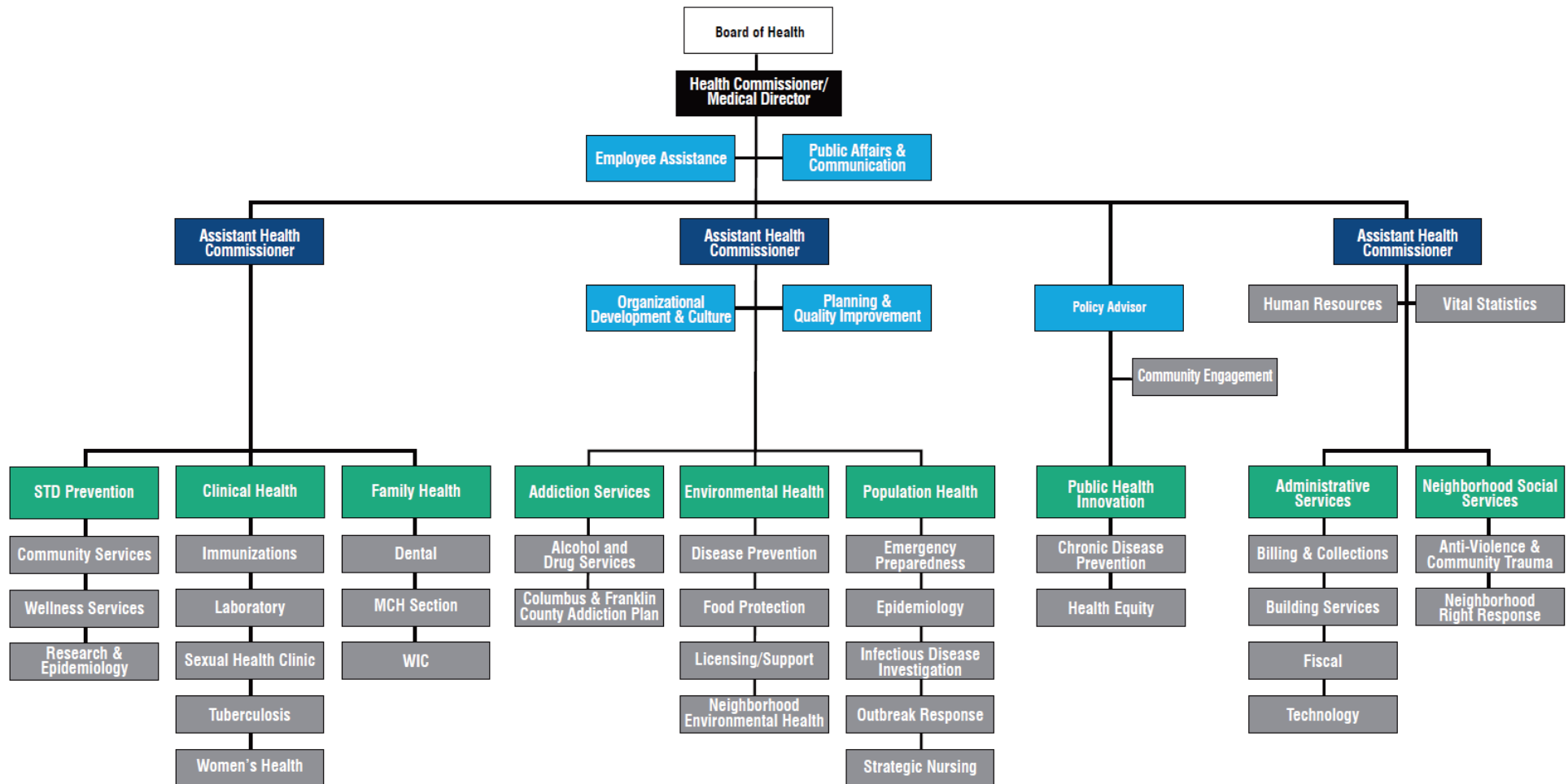
Within the **population health** area and through the **Office of Epidemiology**, CPH helps to improve the health of the Columbus community by gathering and studying health-related data and information. CPH also guides the appropriate use of such data for decision making in community health policy, planning, and programming. Its **Office of Emergency Preparedness** analyzes health indicators, investigates infectious diseases, and implements public health interventions when needed.

The newly developed **Center for Public Health Innovation** has been tasked with raising life expectancy and improving quality of life by reducing health inequities with a focus on racism as a public health crisis.

Finally, a new program was developed to enhance **Neighborhood Social Services** programming to include community trauma support and anti-violence prevention. CPH also provides social workers in the 911 Call Center to assist Columbus Police and Fire dispatchers to respond appropriately to non-violent calls and provide community teams that follow up with the calls based on the acuity level and needs of the caller. Neighborhood Social Services will continue to provide community support to residents on housing, food insecurity, and access to various community needs agencies.



Public Health



2022 BUDGET NOTES

The 2022 budget for Columbus Public Health allows for continued provision of public health services that are mandated, services that meet the Mayor's strategic priorities, and a variety of programs that the Board of Health deems essential. In addition:

- A new program, Neighborhood Social Services has been created for 2022 with a budget of \$4 million. This program, which encompasses the CARE Coalition, Violence Intervention, Violent Crime Review Group, Community Right Response, Right Response Dispatch, and Neighborhood Social Work focuses on community trauma support and hospital based violence intervention; community based violence reduction programs focusing on geographical location and at-risk individuals for violence; community based teams who follow up on 911 calls; 911 Dispatch Center teams that triage calls to assess for proper response based on acuity of the call; and, a community based team working directly with residents on housing, food insecurity and access to various community needs agencies.
 - The Health Department continues to focus on sexual health services and promotion. For 2022, this area is budgeted at \$488,058.
 - Total combined funding of \$1,429,434 is provided to continue to address heroin and opiate use as part of the Columbus and Franklin County Addiction Plan. The Safe Point Program continues to be funded at \$350,000 and provides Naloxone access, addiction counseling, treatment referrals, infectious disease screenings and linkage to care, and prevention education. In addition, medication assisted treatment services funding remains at the same level as 2021.
 - Continued funding is included in the 2022 budget to support the infant mortality initiative, CelebrateOne, including funding for Pre- and Post-Natal Evidence Based Home Visiting services to provide wrap-around social and nursing support to more women and babies in an effort to help reduce infant deaths. More information on CelebrateOne can be found in the Office of CelebrateOne's budget section.
 - Continued support for PrimaryOne, formerly known as the Community Neighborhood Health Centers (CNHC), in the amount of \$4.3 million is included to provide access to care and to address health concerns at multiple health centers.
 - The department continues to assist Columbus Public Schools by contracting with the district to provide general consultation and input on school health procedures and protocols, and to contract with and receive revenue from the City of Worthington to provide public health consultation and assistance in matters of public health.
-

PERFORMANCE MEASURES

Safe Sleep Ambassadors

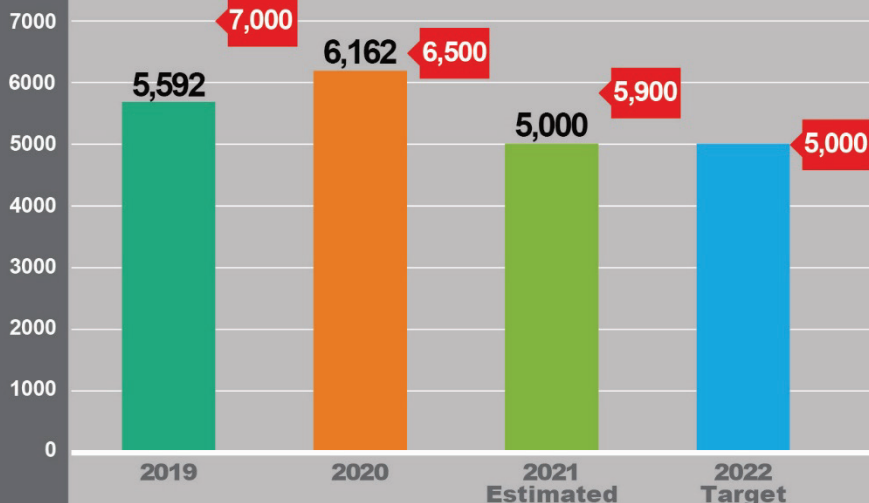
Number of new Safe Sleep Ambassadors trained



The CelebrateOne initiative, operated out of the Office of the Mayor until July 2021, focuses on reducing infant mortality in Columbus and Franklin County. Sleep-related infant deaths are mostly preventable and are a leading cause of death for babies from birth to one year of age. Trained Safe Sleep Ambassadors share the ABC's of safe sleep with their friends, family, co-workers, neighbors, and community groups. A transition to virtual training was implemented in April 2020 in response to COVID-19 restrictions. CPH projects that training of 1,000 ambassadors will occur in 2022.

Home Visits

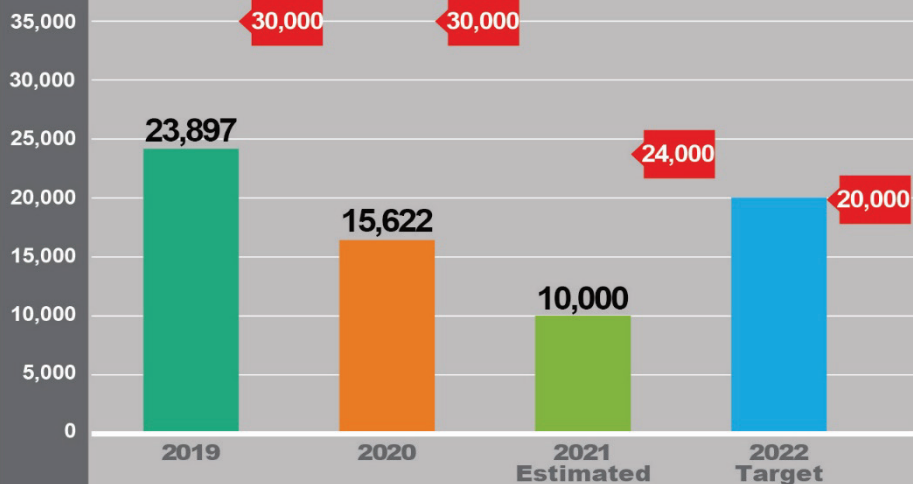
Number of prenatal, newborn and child home visits completed



CPH Maternal Child Health Home Visiting Programs provide community outreach, and in-home, family-centered care coordination, education and support to pregnant and parenting women with very young children. All services are voluntary and at no cost to the client. The 2020 actual visits were higher than projected due to the ability to provide telehealth visits due to COVID-19. CPH estimates 5,000 home visits will occur in 2022 which is based on the number of visits completed in the first six months of this year. Since so much is unknown about the Delta variant and how it will impact our community, projections for 2022 are based on current staff assignments.

Immunizations

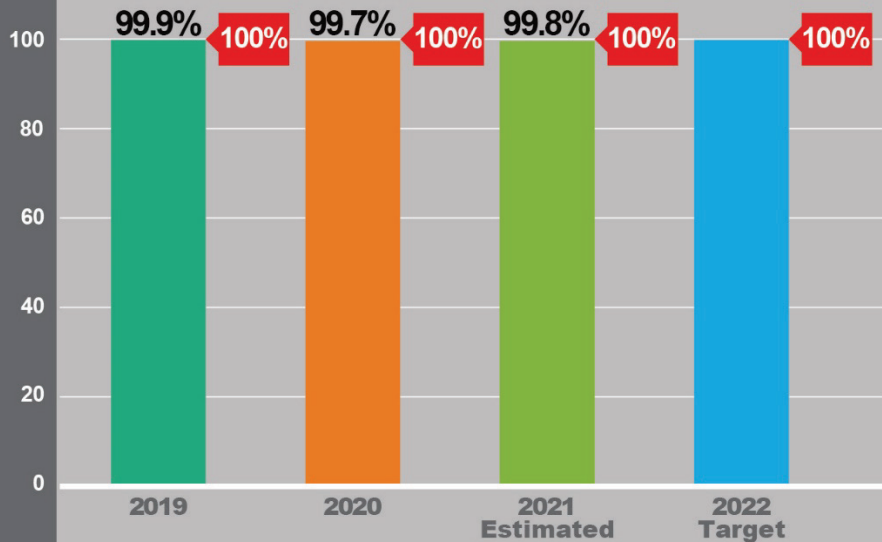
Number of immunizations provided to adults and children



Providing immunizations to adults and children is a top priority in protecting the health of residents by reducing the spread of vaccine-preventable illnesses such as measles and pertussis (whooping-cough). CPH is estimating it will provide 10,000 vaccinations in 2021, a 33 percent reduction from 2020 due to clinic closures from January through May, and a continued reduction in client visits caused by coronavirus pandemic concerns. The 2022 target of 20,000 assumes clinic operations continue uninterrupted and can return to normal pre-pandemic levels.

Compliant Food Facilities

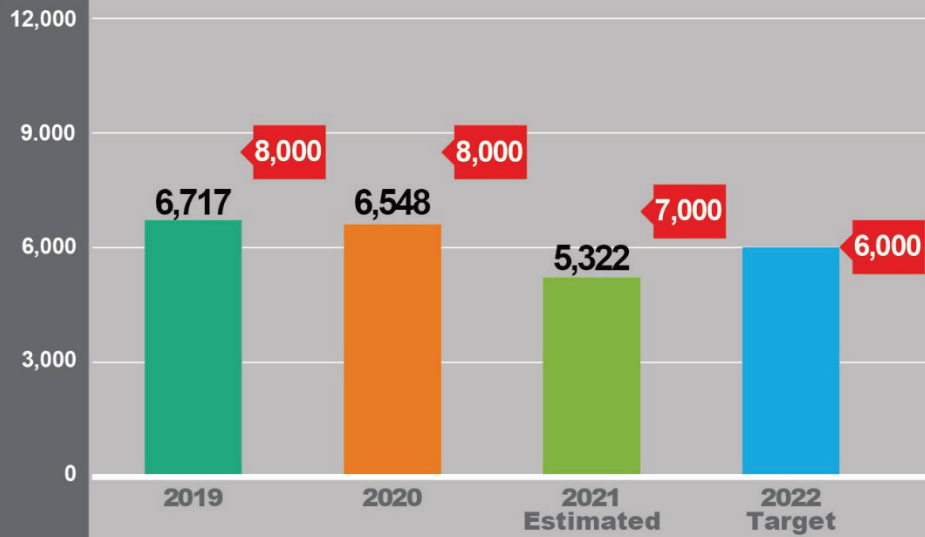
Percentage of licensed food facilities in compliance with public health standards



Columbus Public Health's (CPH) Food Protection Program inspects and safeguards retail food establishments for residents of Columbus and Worthington. CPH consistently meets its compliance standards. Retail food establishments not in compliance are under enforcement by CPH to address violations. The 2022 target for this measure will continue at 100 percent of food facilities in compliance with public health standards, to ensure the continued safety of Columbus residents.

Pesticide Applications

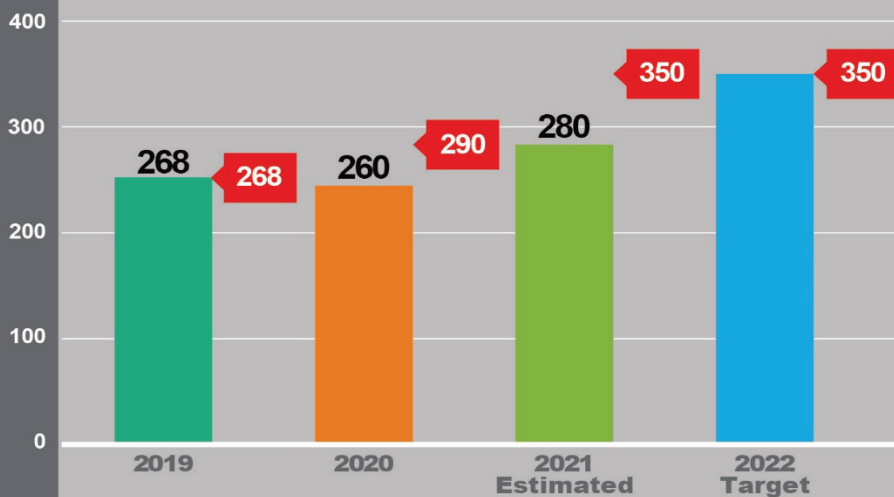
Number of pesticide applications made to stagnant water sites



The Vector Control Program conducts larviciding each year to prevent mosquitoes from developing into adults where they can then transmit disease. This is accomplished by treating standing water (larviciding) which includes: rain barrel treatment, catch basin treatment, historic mosquito breeding sites being treated, identification and treatment of new mosquito breeding sites, and complaint investigations in which standing water may be observed and treated.

Baby & Me Tobacco Free Clients

Number of maternal health clients who are smoke-free by first post partum visit



The Baby and Me Tobacco Free program at CPH is the only evidence-based smoking cessation program specifically tailored for pregnant women and their families in Franklin County. It aims to increase smoking cessation rates among pregnant and postpartum women to improve birth outcomes and infant and maternal health. In 2020, Baby and Me Tobacco Free implemented telehealth services, which allowed for continued programming throughout the COVID-19 pandemic. By the end of 2021, the program aims to increase participation to 350 smoke-free clients.

Public Health

Financial Summary by Area of Expense						
Division	2019 Actual	2020 Actual	2021 Budget	2021 Projected	2022 Proposed	
Health						
Health Operating Fund						
Personnel	\$ 25,408,583	\$ 20,030,627	\$ 28,809,054	\$ 26,708,285	\$ 29,854,837	
Materials & Supplies	1,152,951	802,572	1,079,730	1,582,102	1,177,230	
Services	7,659,011	6,933,661	7,523,729	9,026,723	8,412,596	
Other	179,182	226,240	32,000	19,161	32,000	
Capital	40,303	38,899	285,000	285,000	-	
Transfer	-	-	4,000,000	1,000,000	-	
Health Operating Fund Subtotal	34,440,030	28,031,999	41,729,513	38,621,271	39,476,663	
Department Total	\$ 34,440,030	\$ 28,031,999	\$ 41,729,513	\$ 38,621,271	\$ 39,476,663	

Department Personnel Summary								
Fund	2019 Actual		2020 Actual		2021 Budget		2022 Proposed	
	FT	PT	FT	PT	FT	PT	FT	PT
Health Operating Fund								
Administration	245	33	240	18	309	33	314	40
Total	245	33	240	18	309	33	314	40

Operating Budget by Program					
Program	2021 Budget	2021 FTEs	2022 Proposed	2022 FTEs	
Health Administration	\$ 9,889,126	49	\$ 10,428,152	50	
Fiscal	503,896	5	582,722	5	
Human Resources	998,700	10	1,006,740	9	
Internal Services	483,824	0	467,837	0	
Center for Public Health Innovation	6,914,639	61	2,587,011	22	
Clinical Health	5,093,712	42	5,123,417	41	
Population Health	6,274,299	29	3,463,651	32	
Environmental Health	5,855,709	63	6,182,876	65	
Family Health	3,761,915	34	3,528,890	33	
Opiate Initiatives	1,469,193	11	1,424,434	9	
Addictive Services	-	0	5,000	0	
Sexual Health Promotion	484,500	5	488,058	5	
COVID-19	-	0	165,111	2	
Neighborhood Social Services	-	0	4,022,764	41	
Department Total	\$ 41,729,513	309	\$ 39,476,663	314	

For additional financial information related to the Health Department, please refer to the health operating fund contained within the Special Revenue section. Program descriptions begin on the following page.



2022 PROGRAM GUIDE

HEALTH ADMINISTRATION

To provide leadership and direction for the department, administrative and support services in the areas of information systems and facilities management, and to monitor and document the department and community status regarding state and national public health standards.

FISCAL

To provide administrative and support services in the area of fiscal management.

HUMAN RESOURCES

To provide administrative and support services in the area of human resource management.

INTERNAL SERVICES

To account for the internal service charges of the department necessary to maintain operations.

CENTER FOR PUBLIC HEALTH INNOVATION

To provide innovation that raises life expectancy and improves quality of life by reducing health inequities with a focus on racism as a public health crisis. The Center works to: bring in community voices to CPH services with participatory planning strategies; increase organizational and community capacity to advance equity; and, develop policy that can dismantle structural racism and improve the health of all. This work is achieved through the use of data to evaluate community health needs and then evaluation to determine project effectiveness.

CLINICAL HEALTH

To provide clinical services to the public including immunization services to residents of all ages, reproductive health and wellness services, family planning and postpartum services, sexually transmitted infection (STI) prevention, education, and referrals to people in need of sexual health services to avoid complications and transmission of STIs.

POPULATION HEALTH

To prevent and/or reduce morbidity and mortality associated with public health threats by analyzing health indicators, investigating infectious diseases, and implementing public health interventions.

ENVIRONMENTAL HEALTH

To reduce the number of food-borne illnesses in Columbus and Franklin County, inspect and license swimming pools, spas, and water systems, provide inspections for hazardous waste and underground storage tanks, conduct animal bite investigations, monitor and control mosquito and rodent populations, and to evaluate and reduce lead poisoning in the community.

FAMILY HEALTH

To provide public health nursing and social work home visiting services to residents in need of social support linkages with community resources, to reduce death and preventable injuries to children aged 14 and under, provide alcohol and drug abuse prevention and education services to Columbus residents, the courts, and clients referred through the employee assistance program, to provide basic and preventive dental clinical services to Franklin County families who are unable to access dental services due to cost, and to prevent tooth decay through a mobile dental sealant program for low income families in Columbus.

ALCOHOL AND DRUG SERVICES

Encompassing **Addictive Services** to account for the costs associated with the prevention and treatment of alcohol and drug abuse and addiction, and **Opiate Initiatives** to account for the costs associated with the prevention and treatment of opioid abuse.

SEXUAL HEALTH PROMOTION

To prevent HIV and other sexually transmitted infections (STI) through education, testing and treatment.

COVID-19

To account for the expenses necessary to address the COVID-19 pandemic.

NEIGHBORHOOD SOCIAL SERVICES

To provide neighborhood social services programs, including; community trauma support and hospital based violence intervention; community based violence reduction programs focusing on geographical location and at-risk individuals for violence; community based teams who follow up on 911 calls; 911 Dispatch Center teams that triage calls to assess for proper response based on acuity of the call; and, a community based team working directly with residents on housing, food insecurity and access to various community needs agencies.

This page has been left intentionally blank.