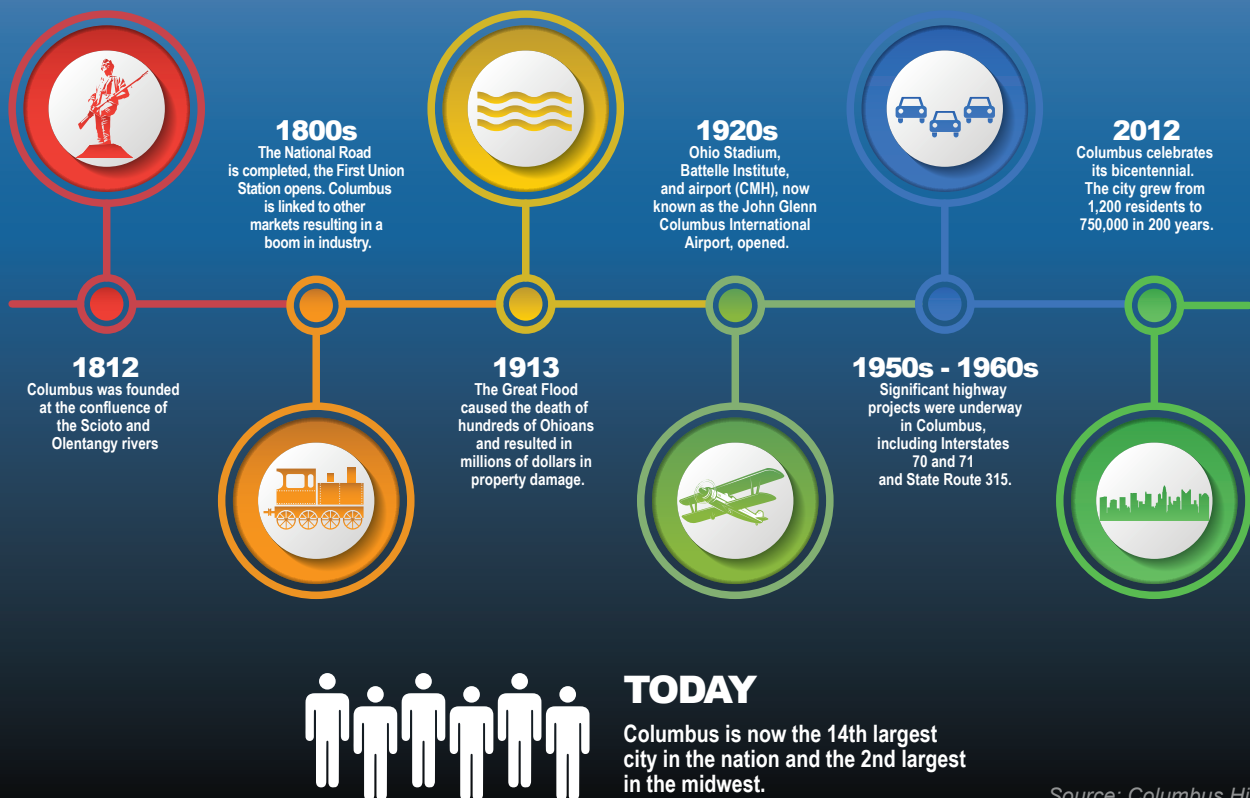


Columbus Community Profile

THE CITY OF
COLUMBUS



Source: Columbus History

Columbus was founded in 1812 at the confluence of the Scioto and Olentangy rivers. In 1803, the year of Ohio's statehood, the capital was moved from Chillicothe, located 45 miles to the south, to Zanesville, located 50 miles to the east, and back to Chillicothe. Created specifically to be the capital city, state officials finally selected a centralized location in Columbus in 1812 and the city officially became Ohio's permanent capital in 1816.

Currently, Columbus maintains its ranking of the 14th most populated city in the United States. Covering almost

226 square miles, the city is recognized nationwide for its historic neighborhoods, booming downtown arts and sporting district, open attitude, and notably affordable quality of life. The city's economy is very diverse and the community prides itself on being at the forefront of education reform, fiscal responsibility, and public safety.

Economic investments in the future of Columbus have created jobs and spurred major initiatives focused on improving neighborhoods, community health, and the environment.

Columbus Government



The city is a home-rule municipal corporation operating under the laws of Ohio. The City Charter, its constitution, can only be amended by a majority of the city's voters.

The city is administered by a Mayor, a seven-member City Council, the City Auditor and the City Attorney. These officials are all elected for four-year terms on an at-large basis. The Mayor and four Council members are elected in an odd numbered year. Three Council members, the City Auditor, and the City Attorney are elected in the following odd numbered year. The City Charter provides for appointments and elections of successors to these officials if they should, for any reason, vacate their office. All are chosen through a non-partisan process.

The Recreation and Parks Director, the Health Commissioner, and the Civil Service Executive Director are appointed by, and report to, independent commissions. The City Treasurer and Clerk to the Council are appointed by, and serve at the pleasure of, City Council. All other departments' directors are appointed by, and serve at the pleasure of the Mayor.

Stay Connected

The myCOLUMBUS free Mobile App allows access to numerous city services, a community events calendar, park and trail guides, and tips for a healthy lifestyle, among other resources.



Key City Services at a Glance

Development

Annual Average Emergency
& Non-Emergency Requests 27,287
Annual Average Code Violation Notices 12,248

Neighborhoods

Neighborhood Pride Centers 5
311 Service Requests Received in 2020 318,315

Public Health

Licensed Food Facilities
Compliant with Health Standards 99.9%
Annual Average Immunizations 15,622

Public Safety

Annual Average EMS &
Fire Runs Dispatched 157,755
Fire Stations 35
Police Substations 17
Annual Average 911 Police Service Calls... 617,941

Public Service

Roadway Lane Miles Maintained ... 5,665 Miles (approx)
Refuse Total Households Serviced 344,000
Recycling Tons Collected 35,000
Bridges Maintained 206

Public Utilities

City-Owned Sewer and
Water Lines Maintained 7,071 Miles
Wastewater Treatment Plants 2
Water Treatment Plants 3
Gallons of Wastewater Treated (2020) 70 Billion
Gallons of Drinking Water Treated 51.5 Billion
Service Population 1.2 Million Customers
City Power 16,000 Customers

Recreation & Parks

Park Sites 400
Acres Maintained (Including Reservoirs) 15,412
Swimming Pools, Spray Grounds,
Splash Pads & Fountains 17
Golf Courses 6
Multi-Use Trails 128.3 Miles
Community Centers 28
Athletic Complexes 5

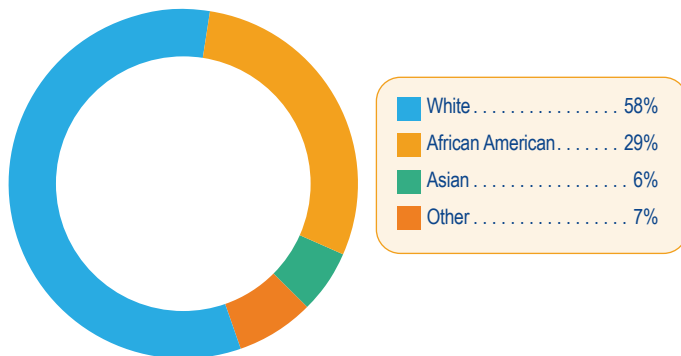
Columbus Demographics



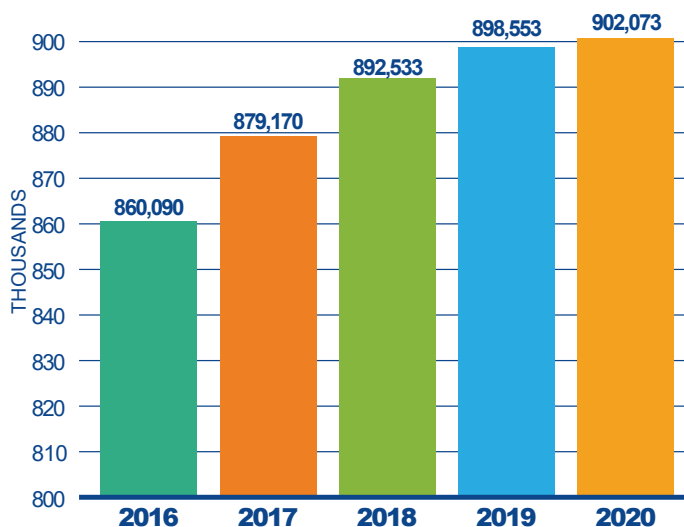
The population of Columbus is diverse, young, and has a growth rate double the national average. The city's population is well educated, with over 36.6 percent having earned a bachelor's or advanced degree compared to the national average of 32.1 percent.

Source: U.S. Census Bureau, 2019 American Community Survey Estimated

Racial Demographics



Population 5 Year Trend



Population Quick Facts

Population Size 905,748
Population per Square Mile 3,976

Population Growth Rate

COLUMBUS 13.9%
National Average 6.3%

Median Income

COLUMBUS \$53,745
National \$62,843

Median Age

COLUMBUS 32.4
National 38.5

Population by Age

Under 18 22.5%
18 to 65 67.3%
Over 65 10.2%

Sex

Female 51.1%
Male 48.9%

FUN FACT!
Columbus has
never declined in
population



Source: With the exception of the total population, the figures in this table are from U.S. Census Bureau 2019 Estimates, QuickFacts & American FactFinder

Columbus Housing

The City of Columbus’ housing market is booming with trendy and desirable neighborhoods, affordable housing options, and a thriving local economy. In Nationwide’s Health of Housing Markets 2020 Q2 report, the Columbus housing market was ranked 35th nationwide.

Columbus is known for its vibrant, unique neighborhoods. Throughout the city, there are a variety of living options with many neighborhoods consisting of smaller communities within its borders. Residents are able to live in areas that range from historically preserved German Village, to the popular Short North, or newly developed downtown condominiums.



Housing Quick Facts

Housing Units 402,520

Persons per Household

COLUMBUS 2.4
National Average..... 2.6

Ownership Rate

COLUMBUS45.5%
National Average.....64.1%

Median Home Value

COLUMBUS \$151,600
National \$217,500

Median Monthly Mortgage

COLUMBUS \$1,337
National \$1,595

Median Monthly Rent

COLUMBUS\$961
National \$1,062

Source: U.S. Census Bureau, 2019 American Community Survey
1-Year Estimates



Columbus Transportation

Columbus is located in the heart of the Midwest, and is within a one day drive or one hour flight to nearly half of the population in the United States and one-third of the population in Canada. Eight major inter-states cross through Columbus, providing convenient access from coast to coast and benefitting in-state commerce. In recent years, Columbus was recognized by Inbound Logistics as one of the nation's logistical hotspots.

Source: Columbus Region

Columbus is also home to the **Columbus Regional Airport Authority** which connects central Ohio with the world through the operation of three airports:

John Glenn Columbus International Airport: Service to over 47 destination airports with over 160 daily flights and 8.6 million annual passengers.

Rickenbacker International Airport: A multimodal logistics hub serving international airfreight, cargo airlines, manufacturers, and distributors with over 300,000 annual passengers.

Bolton Air Field: Services the needs of area businesses, private pilots, and aviation enthusiasts. In addition, Columbus is also home to **The Ohio State University Airport**, with over 75,000 operations a year, including corporate activity, student training, and pleasure flying.

Source: Columbus Regional Airport Authority

Other Means of Getting Around Columbus:

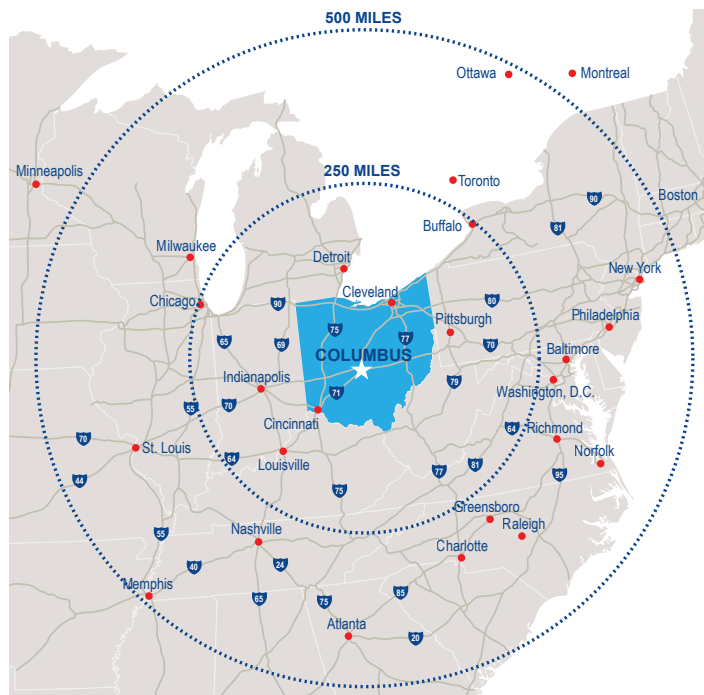
Public Transportation: The Central Ohio Transit Authority (**COTA**) provides bus service to over 19 million annual passengers with 41 local, express, and crosstown lines serving a 562 square mile area.

Sharing Services: COGO provides on demand access to over 600 bicycles located at 80 stations throughout downtown and adjoining neighborhoods. **Zipcar** provides car-sharing service in on-street parking spots Downtown, as well as the Short North, German Village, and Weinland Park. **Uber** and **Lyft** connect people in need of a ride with available drivers. Electric scooter share options are available through **Bird**, **Lime** and **Link**.

Two Wheels: Columbus' bikeway program encourages traveling in and around Columbus via bicycles and maintains protected bike lanes and 230 miles of connected trails in the region.

Taxi Services: Pedicabs provide bike taxi service throughout downtown and taxicabs offer taxi service throughout the city.

The figures cited on this page reflect pre-Covid analysis.



Columbus Employment

Columbus serves as headquarters to major national and multinational corporations including Nationwide Mutual Insurance, L Brands, Huntington Bancshares Inc., American Electric Power (AEP), and Big Lots. In recent years, the healthcare industry has emerged as a growth sector, with the city boasting four nationally recognized health system employers; each employ thousands of healthcare workers and contribute billions of dollars to the local economy.



Employer Name	Central Ohio Employees
The Ohio State University	35,210
State of Ohio	24,897
Ohio Health	24,512
JPMorgan Chase & Co.	17,480
Nationwide Insurance	16,000
Nationwide Children's Hospital	13,161
Kroger Co.	12,018
Amazon	9,200
City of Columbus	8,673
Mt. Carmel Health	8,182
L Brands	7,600
Honda	6,612
Huntington Bancshares Inc.	5,741
Cardinal Health Inc.	4,596
American Electric Power Co.	4,500

Source: Columbus Business First: Largest Central Ohio Employers, Published July 2021

Several major employers have made central Ohio home in recent years, investing millions of dollars in the local economy and expanding the region's economic base. The table below lists private companies that have made recent significant investments in the Columbus economy.

Company	Type	Product	Investment
Facebook	Data Center	Data Center	\$875 million
Amazon	Data Center	Cloud Computing	\$455 million
Nationwide Children's Hospital/Andelyn Bioscience	Manufacturing/ R&D	Pharmaceuticals	\$90 million

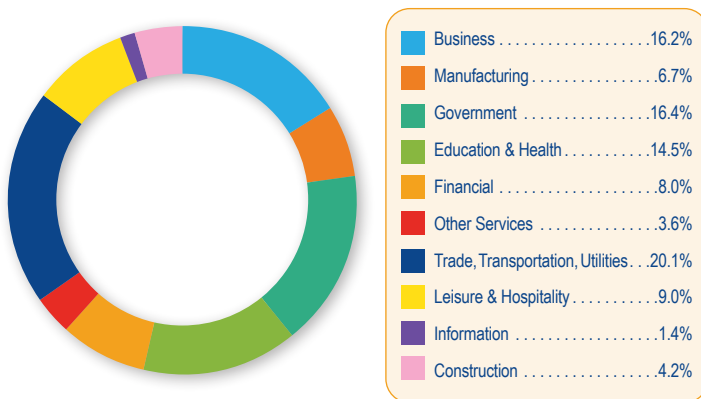
Source: Ohio Private Investment Survey 2018-2020, Ohio Development Services Agency, June 2021

Columbus Workforce Environment

Columbus has a stable, diverse employment environment with a large range of employment opportunities. All employment sectors have 20 percent or less of the workforce, indicating the city is well diversified in this area.

Since 2011, almost every sector has experienced growth. The construction sector has experienced growth of over 50 percent, followed by the financial sector, with growth of 23 percent, and the education and health sector, with growth of 23 percent.

Source: U.S. Bureau of Labor Statistics



Largest Colleges & Universities

Educational opportunities in Columbus range from career training programs to top ranked schools and universities. Employers have access to a large, well-educated and highly skilled workforce. The city is home to more than 52 nearby colleges and universities, with a total enrollment of more than 134,000 students and over 22,000 annual graduates. In addition, Columbus offers a large variety of workforce development programs through community, technical, and vocational schools.

University	Enrollment
The Ohio State University	61,391
Columbus State CC	28,159
Franklin University	6,031
Central Ohio Technical College	3,469
Capital University	3,226



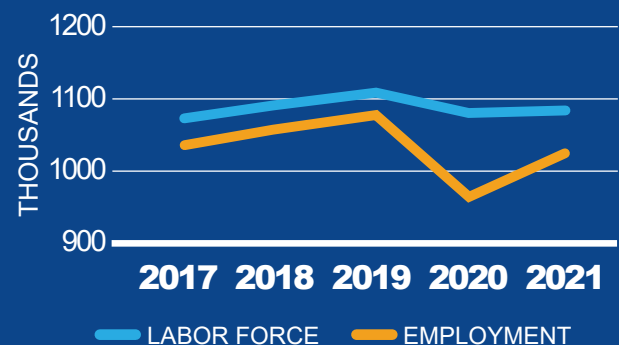
COLUMBUS STATE
COMMUNITY COLLEGE



Source: Source: Columbusregion.com/colleges-universities/



Workforce Quick Facts 5 Year - Labor Force Trend



Workforce Size 1,084,502

Unemployment Rate

Columbus 5.7%
National Average 6.1%

Mean Hourly Wage

Columbus \$26.04
National Average \$27.07

Highest Paid Occupation

Management \$56.96

Lowest Paid Occupation

Food preparation \$12.17

Mean Travel Time to Work

Columbus 23.8 (minutes)
National Average 27.1 (minutes)

Source: U.S. Bureau of Labor Statistics, U.S. Census Bureau

Columbus Economic Development

Columbus ranks as the 14th largest city in the United States with a city population of 905,748. Population numbers are reflective of the April 1, 2020 U.S. Census.

- Columbus metropolitan statistical area (MSA): 2,122,271
- Columbus enjoys a workforce of over 1.1 million, the median age of which is 36.4 years, or 2.5 years below the national average.
Source: US Census ACS 1-yr, 2019 (U.S. Median age is 38.9 years)
- The annual cost of living in Columbus is over ten percent below the national average.
Source: C2ER, 2019 Annual Average
- Seventeen Fortune 1000 companies operate their headquarters within the City of Columbus.

The Columbus economy is balanced with a combination of education, technology, government, research, insurance and health care entities as major employers within the city. As one of the fastest growing cities in the United States, these diverse investments are indicators of a strong economy and continue to signal markets across the globe that Columbus is a great place to do business. Columbus frequently earns nationwide recognition for its booming downtown, historic neighborhoods, arts and sporting districts, open attitude and a noticeably affordable quality of life. The City of Columbus remains on its growth trajectory from 2020 into 2021 and continues to absorb a tremendous number of net new jobs and investment throughout the City.



Downtown Development Quick Facts

Investments	
Proposed	\$1.5B
Under Construction	\$1.0B
Completed	\$221M

Largest Proposed Projects	
70/71 Phase 6B-E – West Interchange	\$280M
70/71 Phase 4B – South Innerbelt	\$246M
North Market Tower	\$175M
Millennial Tower	\$150M
70/71 Phase 6R – Outbound Downtown	\$120M
70/71 Phase 4R – Fulton Exit EB	\$115M
Harmony Tower	\$100M

Private and Public Investment	
Total 2010-2020	\$2.841B
Total Residents	9,855

Housing Units	
Proposed	1,591
Under Construction	1,169
Completed	1,056

Apartment Occupancy Rate	85.7%
------------------------------------	-------

Office Vacancy Rate	19.2%
-------------------------------	-------

Colleges & Universities
4 institutions with 38,723 students
(Downtown - Columbus State Community College, Franklin University, Columbus College of Art & Design, Capital University Law School)

Hotels	17
------------------	----

Annual Visitors (2019)	10 million
----------------------------------	------------

(Source: State of Downtown Columbus Year End 2020 prepared by Capital Crossroads & Discovery Special Improvement Districts.)

Columbus Economic Development

Sarepta Therapeutics, Inc., a global commercial biotechnology company focused on genetic medicine for rare diseases. The company has opened its Genetic Therapies Center of Excellence in Columbus, Ohio including an 85,000-square-foot facility at 3435 Stelzer Road and over \$40 million in machinery and equipment and leasehold improvements. The new Center will allow Sarepta to lead the way in making Columbus an epicenter of gene therapy research and development. The company plans to relocate and retain 38 existing full-time permanent positions and create 100 new full-time permanent positions at this facility.



Andelyn Biosciences, a new for-profit subsidiary of Nationwide Children's Hospital is in the process of constructing a \$175 million, 185,000 square foot facility as part of Ohio State University's West Campus Innovation District. Andelyn Biosciences will relocate up to 235 employees to the facility to manufacture gene therapy products for the biotechnology and



pharmaceutical industries. Anticipated to open in 2022, Andelyn Biosciences' site will hold central Ohio's first commercial-scale Good Manufacturing Practices (cGMP) production facility devoted to gene therapies. The products will have application to life-threatening diseases such as Spinal Muscular Atrophy, Duchenne Muscular Dystrophy, Batten Disease, Cystic Fibrosis, Parkinson's disease and ALS.

Root, Inc., the nation's first car insurance company to incorporate individual driving behavior in every rate, quickly filled their new, downtown office in 2019. The company determined that adding a second, more suburban office location would be the best way to expand their workforce and meet the needs of their growing company. While retaining 79 employees with an estimated annual payroll of approximately \$8.4 million, Root Inc. began expansion plans which includes the creation of over 863 new full-time permanent positions between the two facilities.



Columbus Fun

Columbus is home to many renowned facilities, including the nationally ranked Columbus Zoo and Aquarium, COSI and Columbus Metropolitan Libraries. Organizations such as the Columbus Symphony, Columbus Jazz Orchestra, and Opera Columbus provide year-round opportunities for live music performances.



Arts & Cultural Attractions

BalletMet
CATCO
Center of Science & Industry (COSI)
Columbus Children's Theatre
Columbus Cultural Arts Center
Columbus Jazz Orchestra
Columbus Museum of Art
Columbus Symphony Orchestra
Columbus Zoo & Aquarium
Franklin Park Conservatory
The King Arts Complex
Lincoln Theatre
Ohio History Connection
Ohio Theatre
Opera Columbus
Palace Theatre
Shadowbox Theatre
Short North Arts District

Entertainment Venues



Sports Teams



Events and Activities in Columbus

Patrons of performing arts and theater find plenty to see in the offerings of local companies such as BalletMet, CATCO (Contemporary American Theatre Company), and the Columbus Children's Theatre. The city offers an exciting array of entertainment with special events, sporting events, and popular festivals throughout the year.



COLUMBUS RANKINGS

#1 Rankings



Top 10 Rankings



This page has been intentionally left blank.
