



Olentangy Trail

Clinton-Como Park to Northmoor Park
PID 112036 | FRA-Olentangy Trail/Clinton-Como



THE CITY OF
COLUMBUS
ANDREW J. GINTHER, MAYOR

RECREATION AND PARKS
DEPARTMENT

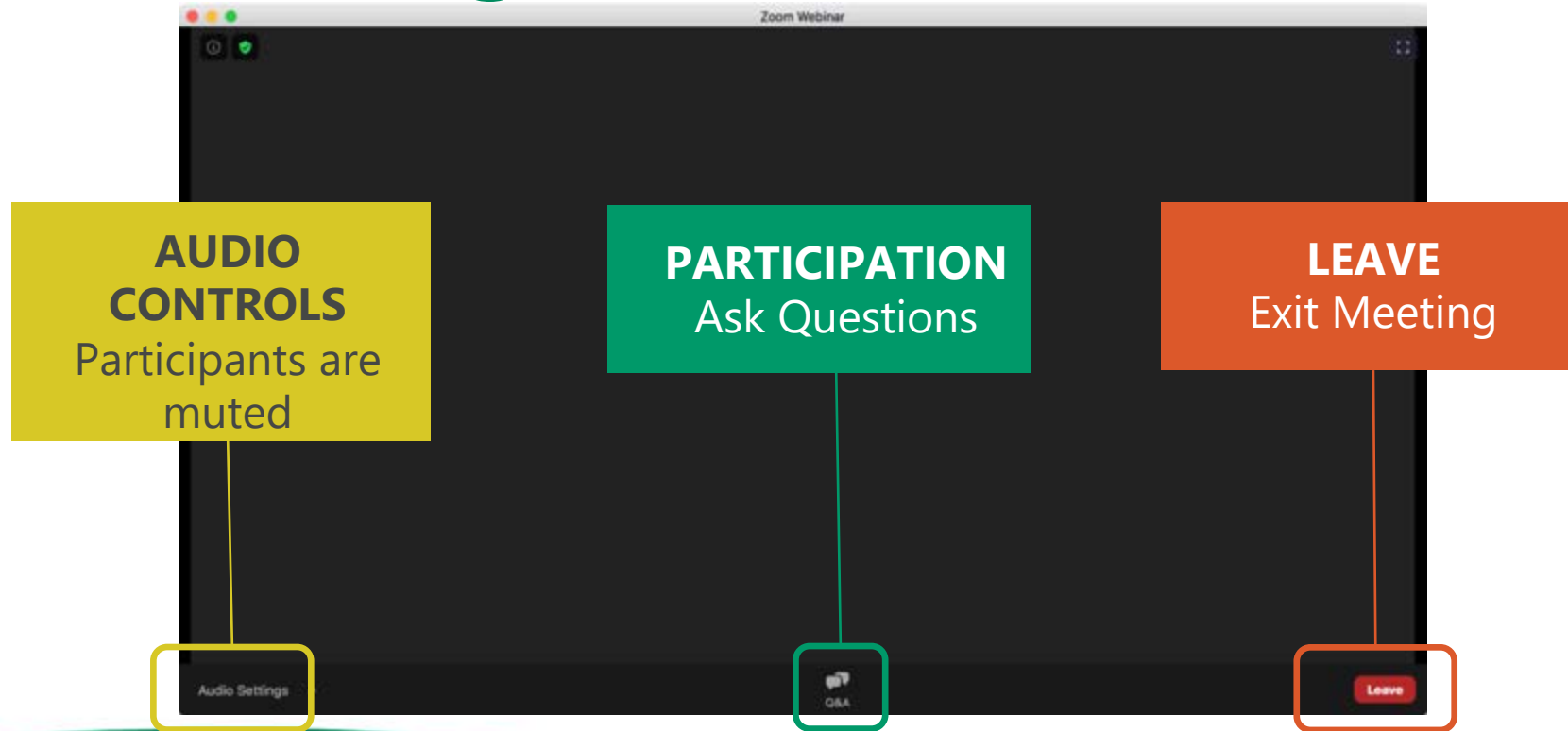
Marie Keister, Moderator
Brad Westall, City Project Manager
Tom Hibbard, Consultant Project Manager

After Tonight's Meeting

- The presentation will be posted at:
<https://www.columbus.gov/recreationandparks/trails/Olentangy-Trail/>
- *The recorded presentation will be available next week at*
[YouTube.com/MurphyEpson](https://www.youtube.com/MurphyEpson)

Overview and Giving Feedback

Virtual Meeting – Zoom Controls



This Presentation Will Cover

- Project overview
- Alternatives considered
- Next steps

Trail continues north 6 miles ↑
See North Section map

Mile 7

Whetstone Park 🗑️ 👤👤 🚲 🧑🏃 🏠 🧑🏃 🌲 🧑🏃 🧑🏃

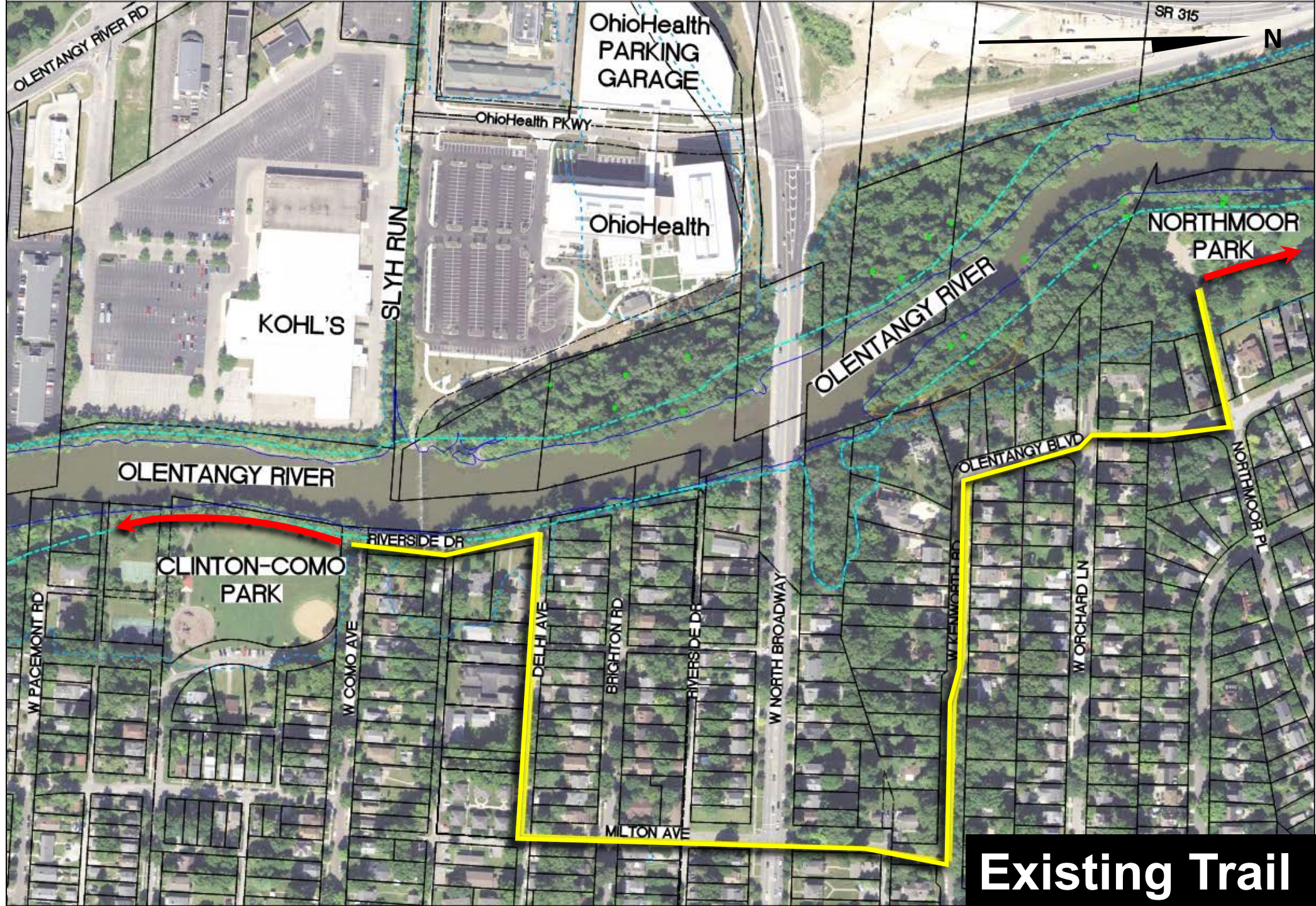
Park of Roses

Northmoor Park 🧑🏃 🌲

Mile 5

Clinton/Como Park 👤👤 🧑🏃 🏠 🧑🏃 🧑🏃 🧑🏃

OSU Wetland Research P



Existing Trail



Riverside Drive
Delhi Avenue
Milton Avenue
W. Kenworth Road
Olentangy Blvd.

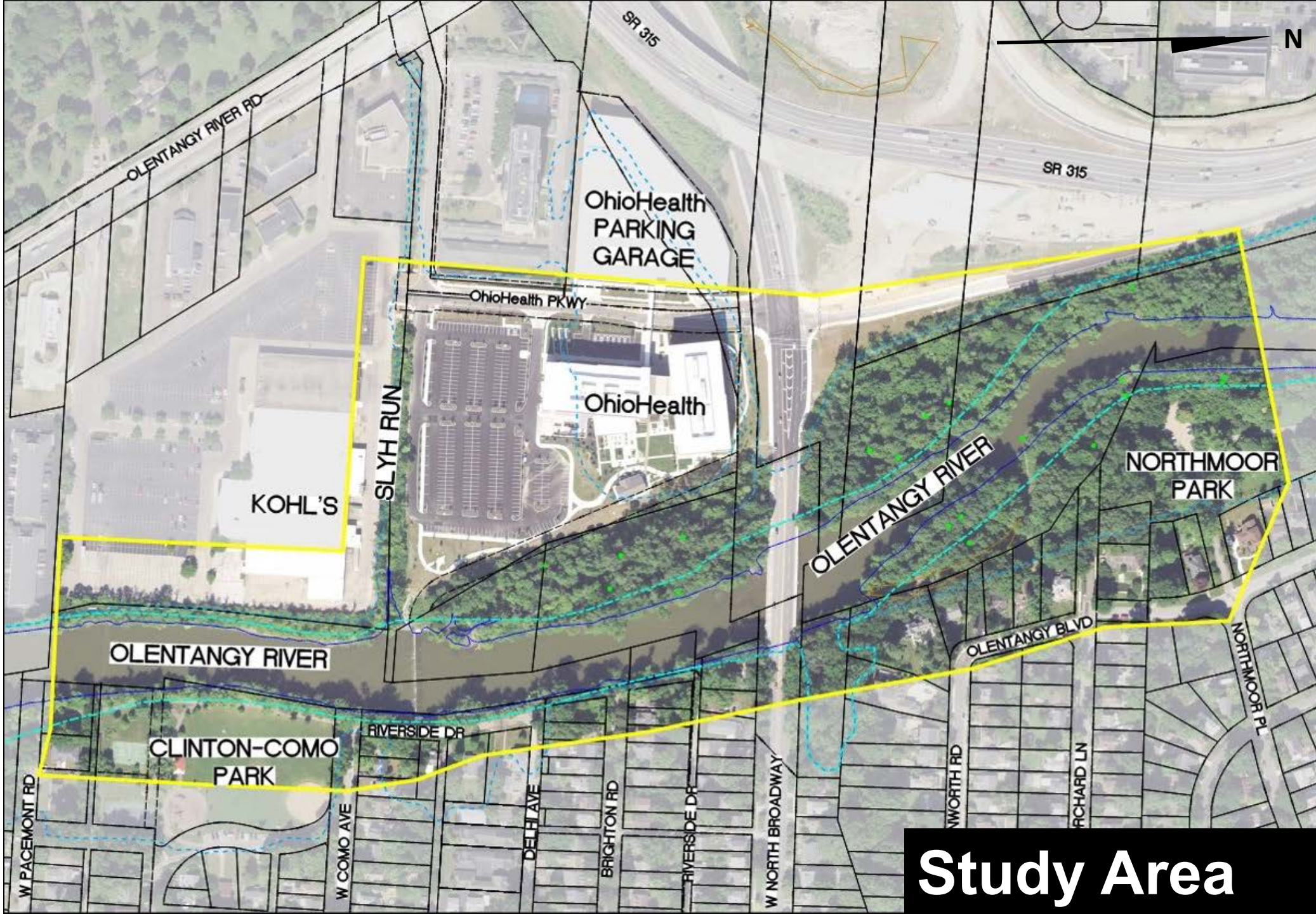
Existing Trail

Completing the Trail

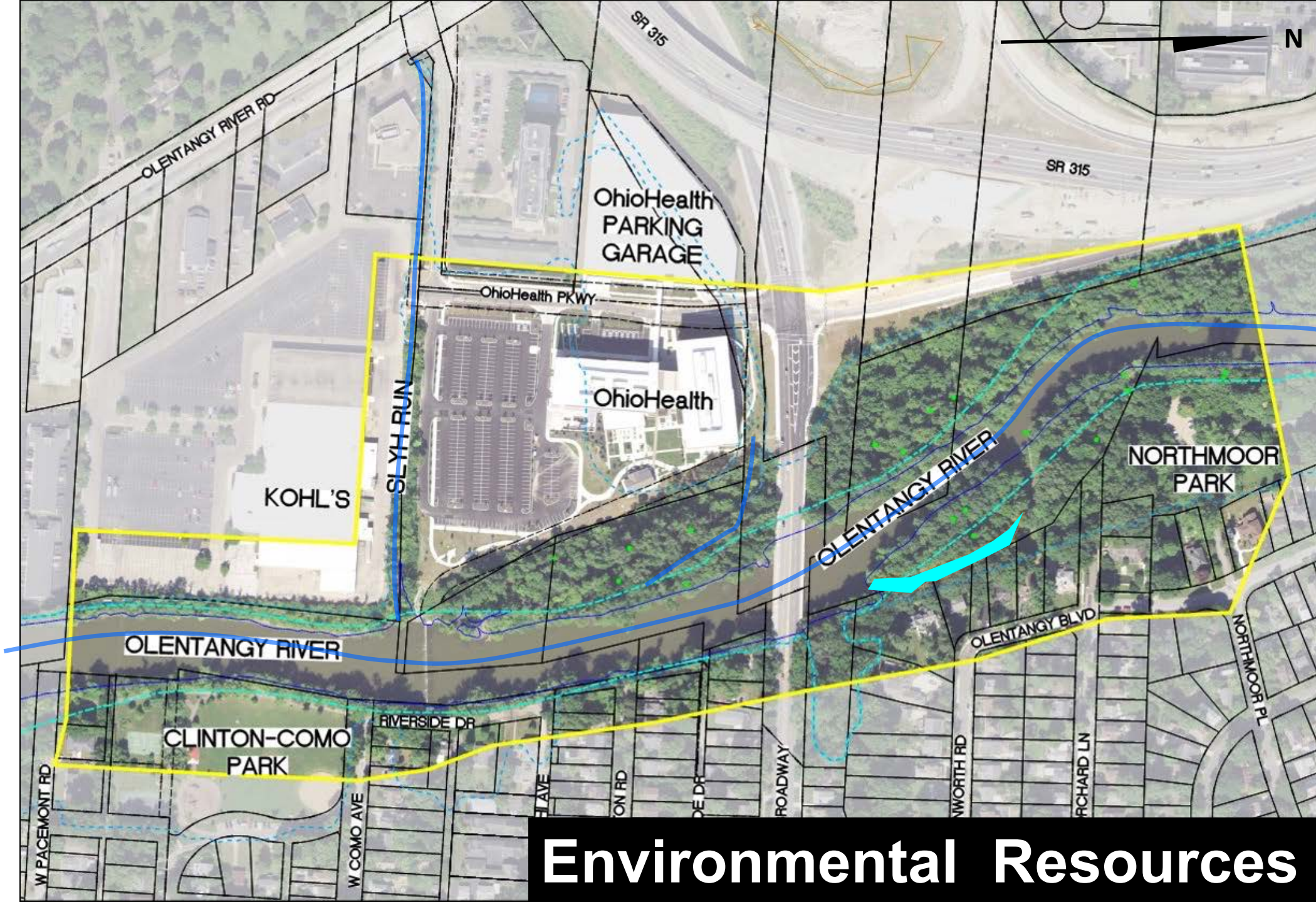
- Purpose & Need
 - Improve safety and access for trail
 - Create a dedicated trail between Clinton-Como and Northmoor Parks
 - Improve connections to residents, commercial centers and jobs
- Funding
 - Awarded \$3.7 million federal transportation funding through MORPC

Timeline





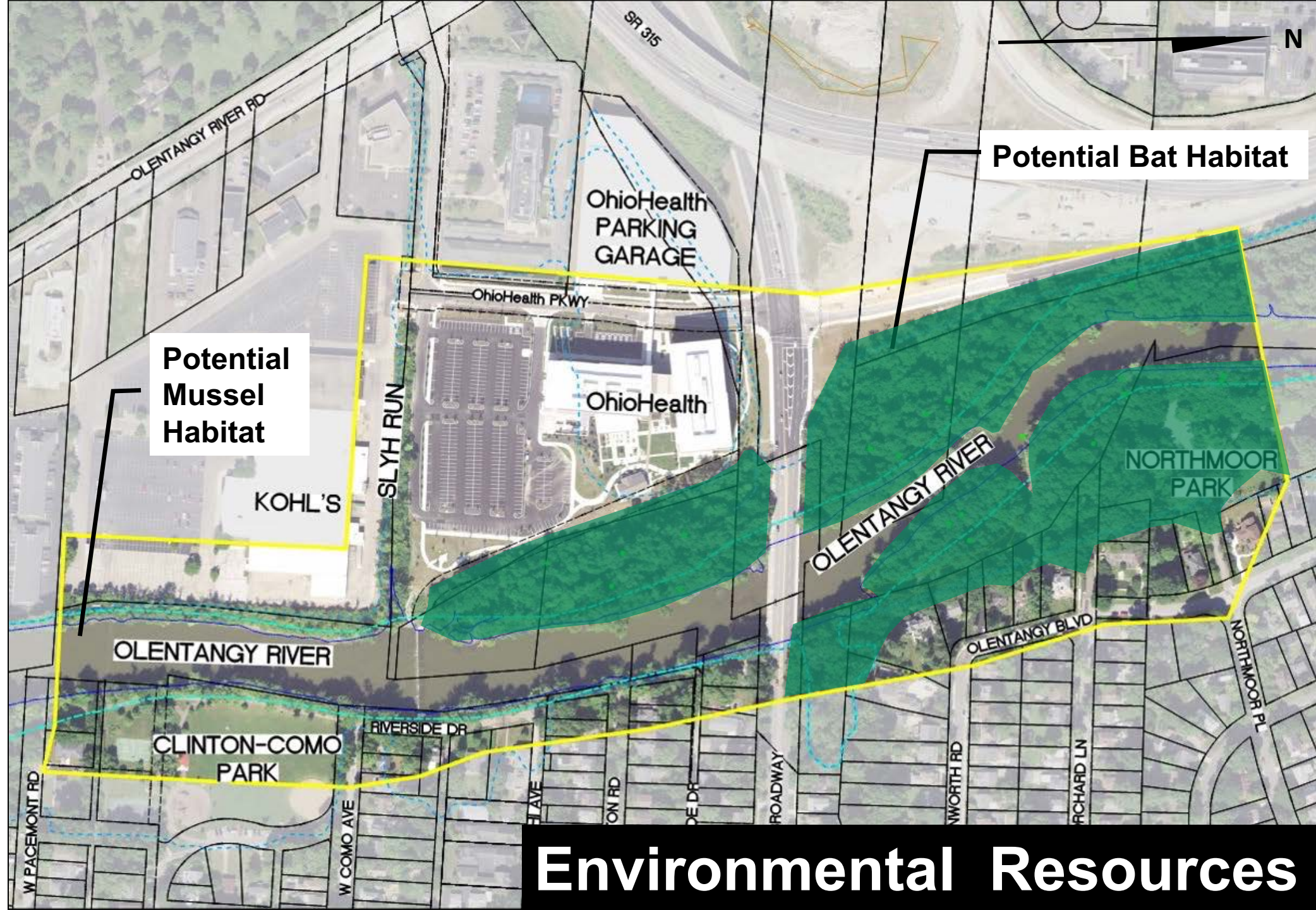
Study Area



Environmental Resources



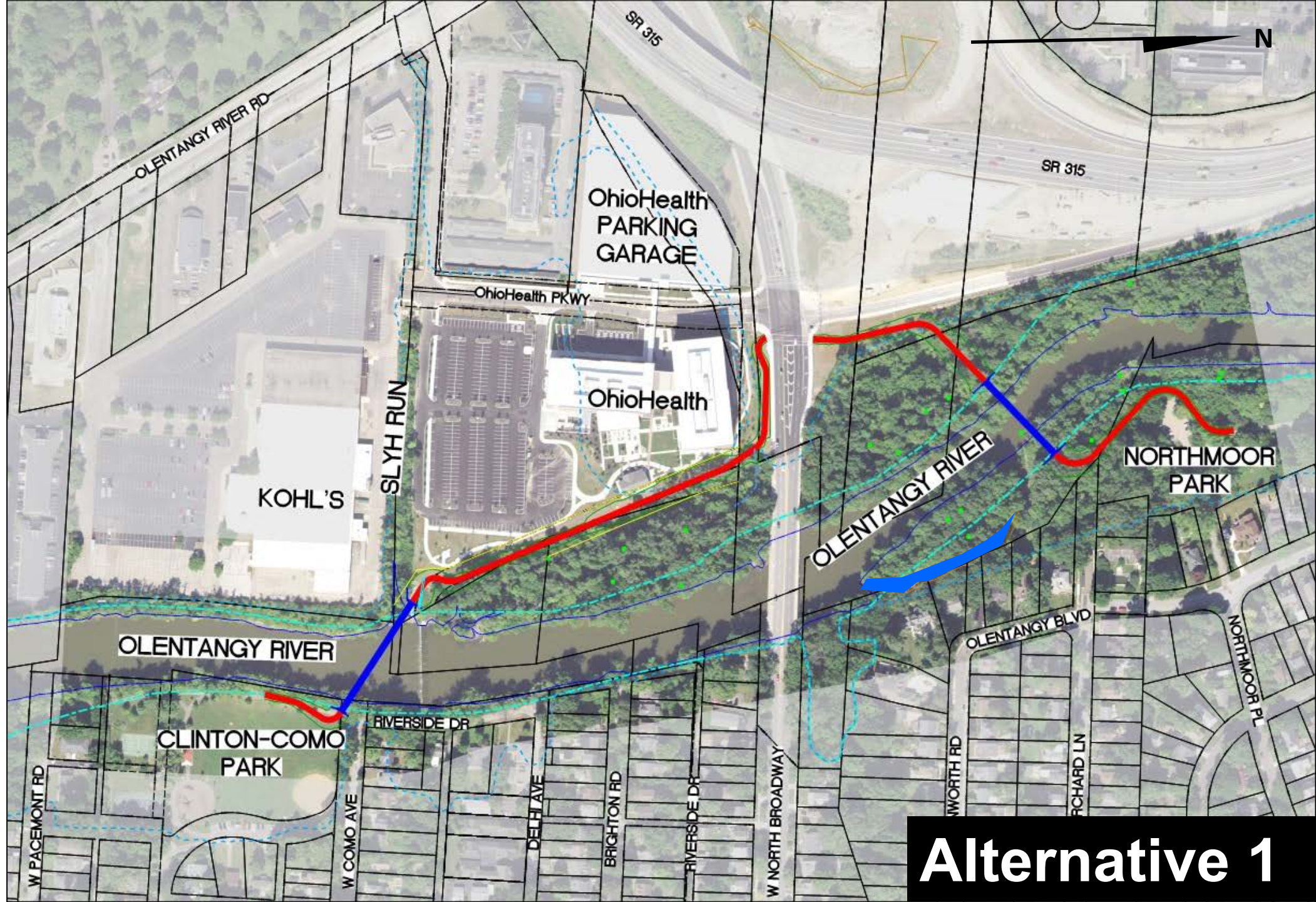
Environmental Resources



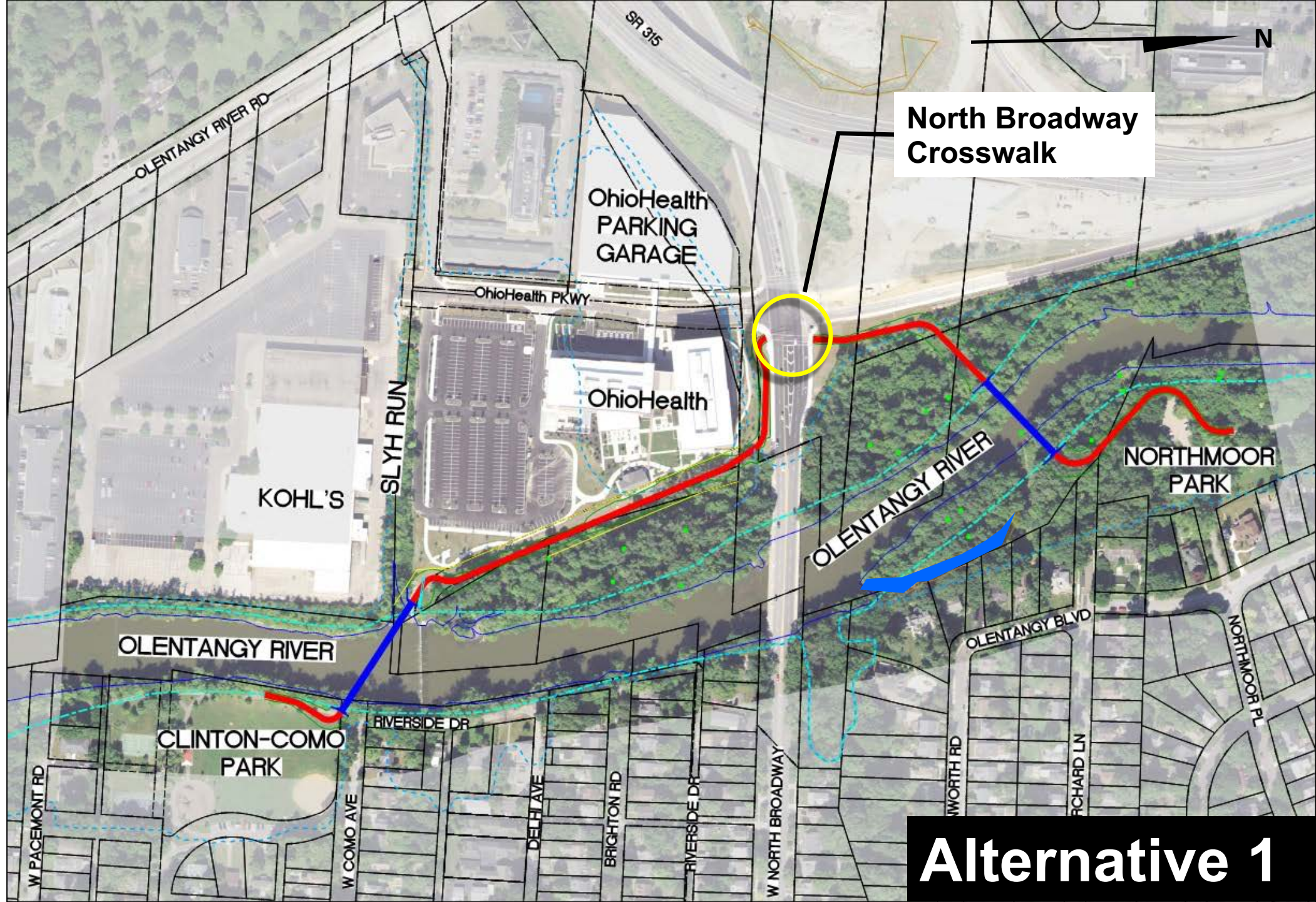
Environmental Resources

Alternatives

- Five Build Alternatives considered
- Evaluation:
 - Safety of trail users
 - Accessibility and mobility
 - Drainage impacts
 - Environmental impacts
 - Property impacts
 - Aesthetics
 - **Public Input**



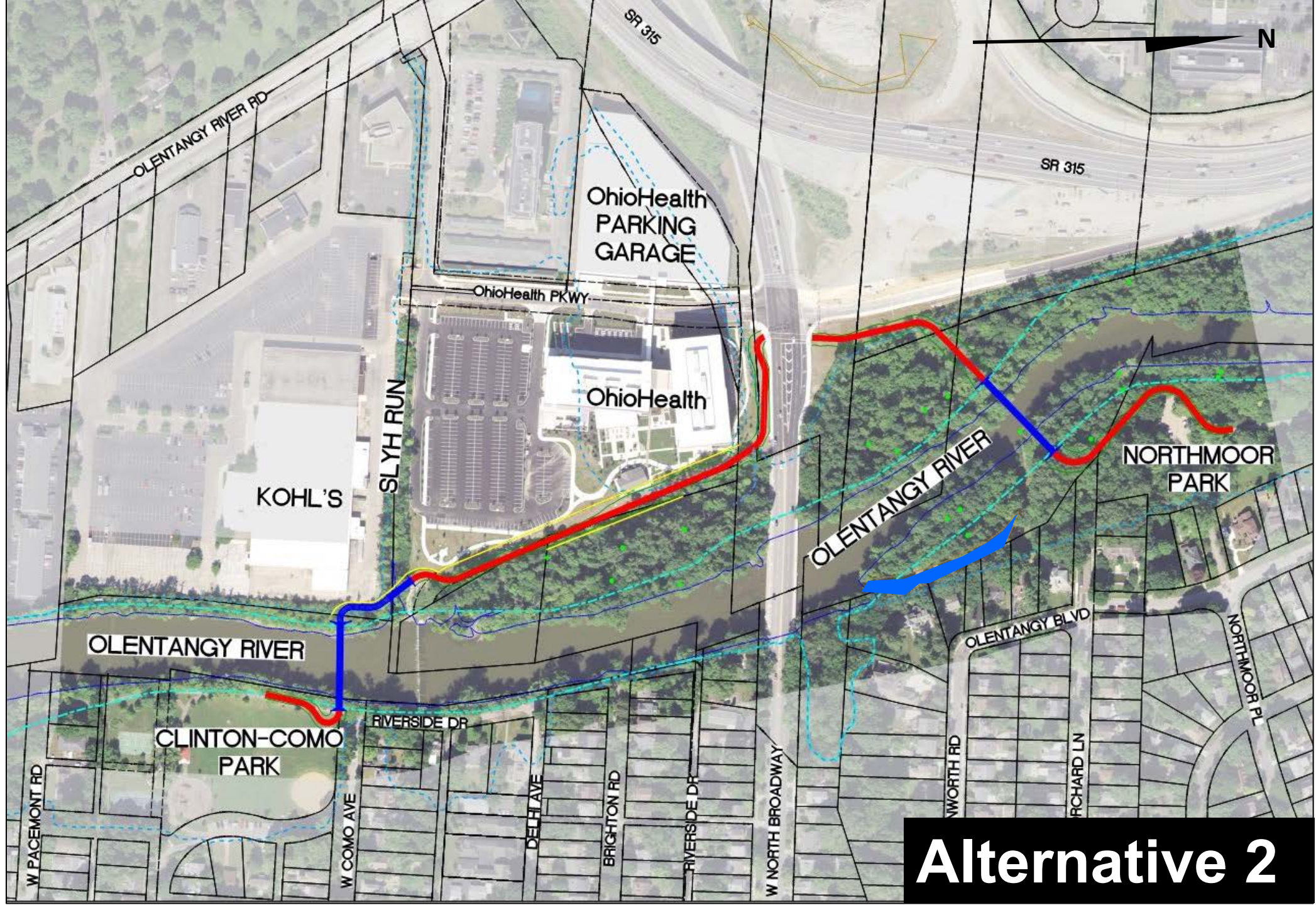
Alternative 1



Alternative 1

Alternative 1 Summary

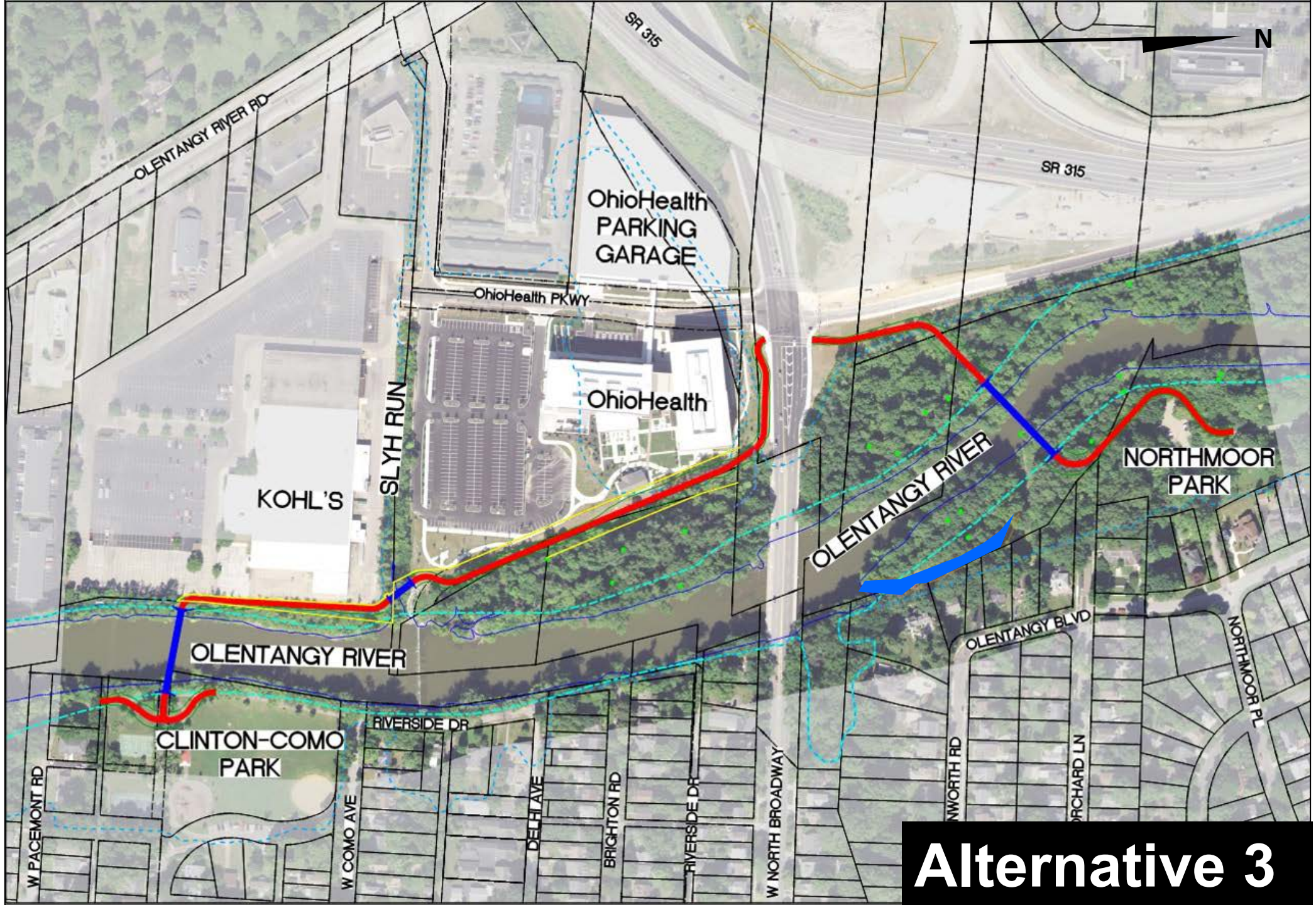
- Bridges will clear span across river without piers
- Avoids wetland area
- Avoids bridge over Slyh Run
- Requires longest river bridge
 - Most visible/tallest bridge option
 - Highest cost alternative
- Easements needed from adjacent business owners



Alternative 2

Alternative 2 Summary

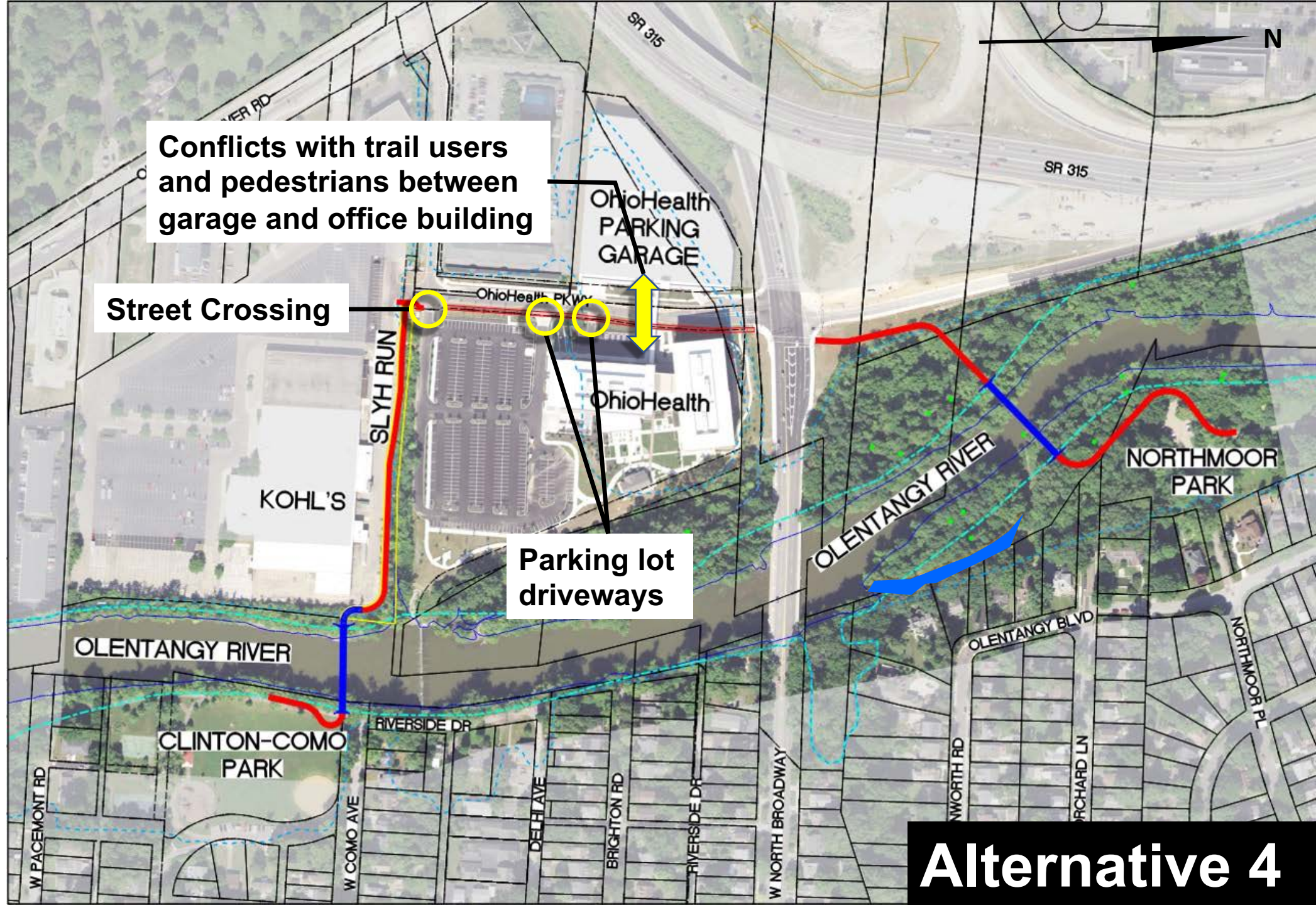
- Bridges will clear span across river without piers
- Avoids wetland area
- Bridge over Slyh Run
- Easements needed from adjacent business owners



Alternative 3

Alternative 3 Summary

- Bridges will clear span across river without piers
- Avoids wetland area
- Bridge over Slyh Run
- Easements needed from adjacent business owners
- Trail runs along east side of Kohl's building



**Conflicts with trail users
and pedestrians between
garage and office building**

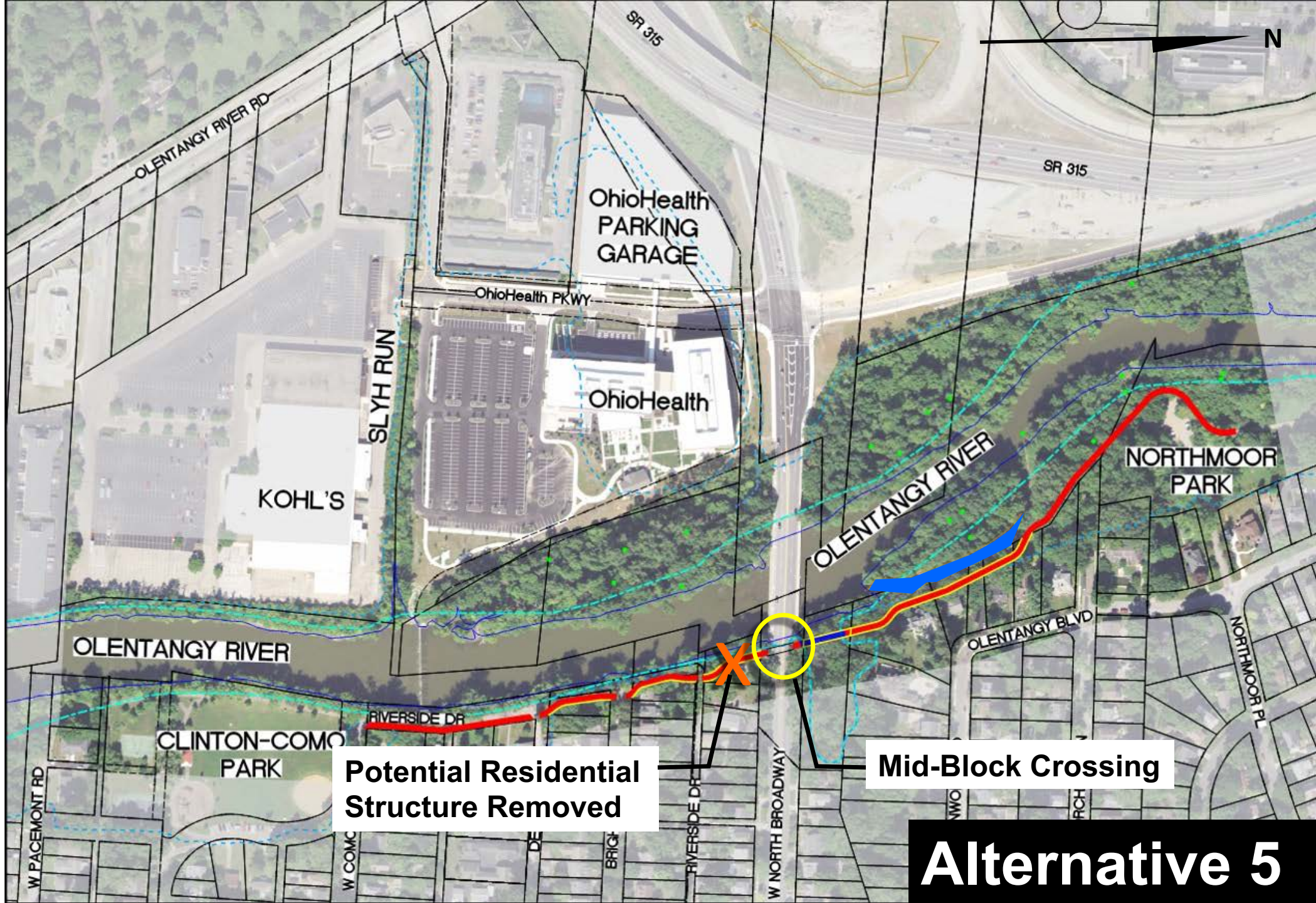
Street Crossing

**Parking lot
driveways**

Alternative 4

Alternative 4 Summary

- Bridges will clear span across river without piers
- Avoids wetland area
- Easements needed from adjacent business owners
- Conflicts with trail users and pedestrians between garage and office building
- Greater potential impacts to Slyh Run
- Trail runs along back of Kohl's, near loading bays
- Portion of trail is out of view of the river



**Potential Residential
Structure Removed**

Mid-Block Crossing

Alternative 5

Alternative 5 Summary

- No bridge over the river or Slyh Run
- Avoids wetland area
- Impacts to residential properties and easements needed from residential property owners
- Mid-block crossing between Milton and Ohio Health Parkway
 - Safety concerns

Evaluation Matrix

Available to review on website

Evaluation Criteria	No Build Alternative	Alternative 1	Alternative 2	Alternative 3	Alternative 4	Alternative 5
Safety of Trail Users	Very Poor	Very Good	Very Good	Good	Fair	Poor
Accessibility & Mobility	Very Poor	Very Good	Very Good	Very Good	Very Good	Poor
Drainage Impacts	Very Good	Fair	Good	Good	Fair	Very Good
Environmental Impacts	Very Good	Good	Good	Good	Fair	Fair
Property Impacts	Very Good	Fair	Fair	Fair	Good	Very Poor
Aesthetics	Very Poor	Very Good	Very Good	Very Good	Good	Very Poor
Construction Cost	\$0	\$6,150,000	\$5,270,000	\$5,030,000	\$4,710,000	\$1,250,000

 Very Good  Good  Fair  Poor  Very Poor

Pause for Questions

Next Steps

- 30-day comment period
- Digest all input and make adjustments
- Identify preferred alternative and send public notification
- Detailed engineering and environmental studies

Comments and Feedback

- Take our survey –
www.surveymonkey.com/r/Olentangy-Trail-completion
by Monday, February 22, OR
- Send comments to: Stephanie Tresso,
stresso@murphyepson.com, 614-221-2885 x15

After Tonight's Meeting

- The presentation and exhibits will be posted at:
<https://www.columbus.gov/recreationandparks/trails/Olentangy-Trail/>
- The recorded presentation will be available next week at
[YouTube.com/MurphyEpson](https://www.youtube.com/MurphyEpson)

Final Questions and Comments?

Thank you!