

Harrison Public Art Project **Fact Sheet**

At a Glance

- Joint public art Project between the Harrison West Society and Columbus Public Art Program
- Harrison Park is a five acre City of Columbus Park located at the terminus of First Avenue, along the east bank of the Olentangy River in the Harrison West Neighborhood
- The Columbus Public Art Program is augmenting Harrison West Society funding with a 2:1 match
- The art budget is \$90,000 with Harrison West providing \$30,000 and Columbus Public Art providing \$60,000
- Project administration is through the Columbus Public Art Program
- Artist Finalist is Todd Kime, Ottawa Hills Ohio with the proposal, *Through*.

Background

The Harrison West Society has funded and completed five public art projects, including four designed by CCAD students that are located in Harrison Park. Park development plans always included a location for a fifth sculpture. The Society wished to have a professional visual artist complete the final piece of art planned for the Park. The Columbus Public Art Program was approached to discuss the final artwork and given the initiative and neighborhood support for public art, agreed to administer the project and provide a 2:1 funding match.

Process Art Process

Staff worked with the neighborhood representatives to draft a statewide artist call/RFQ, which was submitted to the CAC for input and review at their hearing on 9/23/14. A web-based survey was conducted in November to solicit community input that could be added to the artist call, which was released in December of last year and was open through mid-January.

An artist review panel approved by the CAC met on January 26 to review the artist qualifications. Twenty submissions were reviewed. The Panel selected three artist finalists to complete site specific public art proposals, as follows:

- Jon Barlow Hudson, Yellow Springs, Ohio
- Xan Palay, Columbus, Ohio
- Todd Kime, Ottawa Hills, Ohio

The artist finalists were approved by the CAC on January 27, following which, the City contracted with them to create a public art proposal for Harrison Park. Each artist received a \$750 design proposal fee. On July 25 the Harrison West Society hosted a community potluck at the Harrison Park Condos Community Center for the artists to present their proposals. The Harrison West Society has had experience and success holding events where community members voted for their preferred artwork and this process was followed, with addition of web-based voting that took place over a two week period. (The three proposals can still be viewed at <http://columbus.gov/planning/harrisonparkap/>) A combined 608 votes were cast and Todd Kime's proposal, *Through*, was selected, having garnered 77% of the votes.

Budget

The art budget is \$90,000. There is a 10% contingency set aside of \$9,000.

"THROUGH"

A SENSE OF ARRIVAL. A GATEWAY. A GREETING OF WELCOME.



IN ITS MOST SIMPLISTIC FORM, "THROUGH" IS A WELCOMING ENTRY TO HARRISON PARK. THE VERTICAL "POSTS" AND HORIZONTAL "HEADER" FORMING THE ARCH IS INSPIRED BY THE ARCHITECTURE OF THE HARRISON PARK NEIGHBORHOOD. PREVALENT THROUGHOUT THE AREA ARE ENTRYWAYS AND PORCHES WELCOMING PEOPLE INTO THE HOMES AND PLACES OF THE AREA'S RESIDENTS. FRAMING THE SIDEWALK AT THE FRONT OF THE PARK, IT INVITES PEOPLE "THROUGH" AS THE FRONT PORCH OF HARRISON PARK.

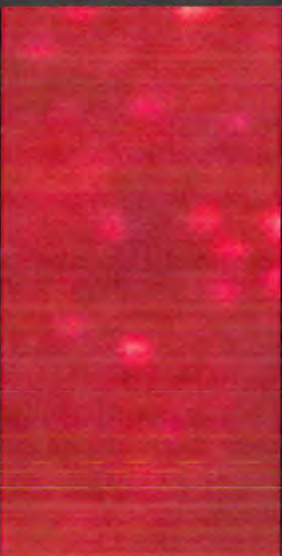


THE MATERIALS USED IN "THROUGH" ARE A CORTEN (WEATHERING) STEEL FRAME WITH CUT OPENINGS FEATURING COLORFUL FUSED GLASS PANELS VISIBLE FROM BOTH SIDES OF THE SCULPTURE. THE WEATHERED TEXTURE OF THE STEEL WILL LOOK AS IF THE MATERIAL WAS SALVAGED FROM THE INDUSTRIAL BUILDINGS THE AREA WAS RECLAIMED FROM. THIS PAYS RESPECT TO THE PARK'S PAST LIFE AND GIVES THE SCULPTURE THE APPEARANCE OF STRENGTH AND PERMANENCE. THE STEEL FRAME WILL HAVE RIVET LIKE CONNECTIONS USING OVERSIZED STEEL BOLTS GIVING THE SCULPTURE A VINTAGE FEEL AS WELL.



INSPIRED BY THE COLORFUL PORCHES THROUGHOUT THE HARRISON PARK AREA, THE GLASS PANELS SHALL BE THICK SLABS OF GLASS TEXTURED AND FORMED TO ALLOW SUNLIGHT AND SHADOWS TO PLAY ON THE GLASS AS LIGHT PASSES THROUGH, BEHIND AND AROUND IT. THE MULTICOLORED GLASS GIVES THE SCULPTURE A WHIMSICAL AND PLAYFUL QUALITY, PERFECT FOR THE FRONT PORCH OF THE PARK.

WE INVITE YOU TO COME "THROUGH".



"THROUGH"

A SENSE OF ARRIVAL. A GATEWAY. A GREETING OF WELCOME.



HARRISON PARK

COLUMBUS , OHIO

TODD KIME 2015



TODD KIME - ARTIST
4410 NORTHMOOR ROAD
OTTAWA HILLS, OHIO 43615
419-536-4303
WWW.THEARTOFSIGHT.COM
FACEBOOK.COM/THEARTOFSIGHT

PROFESSIONAL EDUCATION:

1987 - BACHELOR OF SCIENCE IN ARCHITECTURE
THE OHIO STATE UNIVERSITY

2006 - PRESENT - ARTISTIC WELDING CURRICULUM
OWENS COMMUNITY COLLEGE
JIM HAVENS, INSTRUCTOR

PROFESSIONAL EXPERIENCE:

1990 - FOUNDED "KIME DESIGN"
CUSTOM RESIDENTIAL ARCHITECTURAL DESIGN FIRM

2006 - CREATED "SIGHT"
ART STUDIO FOR SHARING AND PROMOTING THE ART OF
TODD AND NANCY KIME

2009-PRESENT - CURATOR, SCULPTURE IN THE PARK, OTTAWA HILLS ,OHIO

CURRENT EXHIBITIONS:

"THE PARADE" - DEARBORN, MICHIGAN

"THE BUS STOP" - TECUMSEH LIBRARY, TECUMSEH, MICHIGAN

"IRONMAN" - DEARBORN, MICHIGAN

"SNAKE IN THE GRASS" - VALPARAISO, INDIANA

"WHAT'S WORSE THAN AN ELEPHANT WITH A RUNNY NOSE?" - FENTON, MICHIGAN

"DOODLE" - VALPARAISO, INDIANA

"XYZ" - HASTINGS, MICHIGAN

"BOUNCE" - UNIVERSITY OF TOLEDO, TOLEDO, OHIO

"SELFIES" - WILLIAMS PARK, GIBSONBURG, OHIO

PERMANENT INSTALLATIONS:

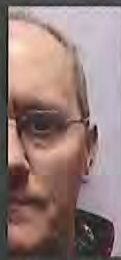
"REALITY T.V." - ELLA SHARP MUSEUM - JACKSON, MICHIGAN

GLASS TOTEMS #5, 7 & 8 - CHELSEA COMMUNITY HOSPITAL, CHELSEA, MICHIGAN

GLASS TOTEMS #6, 9 & 10 - PRIVATE COLLECTION, ST JOSEPH, MICHIGAN

(6) BIKE RACKS - SCULPTURE WITH A PURPOSE, FT WAYNE INDIANA

"BOUNCE" - ST CLAIR RIVER WATERFRONT, PORT HURON, MICHIGAN



TODD KIME - ARTIST
4410 NORTHMOOR ROAD
OTTAWA HILLS, OHIO 43615
419-536-4303
WWW.THEARTOFSIGHT.COM
FACEBOOK.COM/THEARTOFSIGHT

ARTIST STATEMENT

FROM ARCHITECTURE TO ART,
A PASSION FOR THE CREATIVE PROCESS
DRIVES MY WORK.
USING A WIDE SPECTRUM OF MATERIALS
IN VARIOUS GENRES OF ART,
I CREATE ART
FOR OTHER'S ENJOYMENT.
A SENSE OF WHIMSY
IS ALWAYS PREVALENT IN MY WORK.

ART ALLOWS ME TO SHARE MY PASSION.

Proposed Fabrication and Installation Timeline

September 22, 2015	Artist Finalist and selected proposal submitted to the CAC for Conceptual Approval
October 2015	Legislation submitted to Council to enter into Contract with Artist
November 2015	Finalize Contract with Artist
December/January 2016	Submit final design & placement proposal (including budget, fabrication, schedule, etc. to Columbus Art Commission for Final Approval
Late Summer/Fall 2016	Installation and dedication

Columbus Art Commission and City of Columbus Public Art Program

The Columbus Art Commission (CAC) was seated by Mayor Michael B. Coleman and approved by Council in late in 2007. Though Columbus Code Chapter 3115, the CAC has authority over the purchase of art by the City and design and placement of art on property owned or leased by the City or placed in the public right of way. The Commission also advocates for public art in the City of Columbus. Its mission is to champion art and design in the public realm as integral and vital to the life of our city.

The Columbus Public Art Program was created by Mayoral Executive Order in February 2014. The program works with city departments, the Columbus Art Commission, artists and community partners to create public art that is freely accessible and celebrates our history, aspirations and diverse cultural heritage. Some of the projects completed or underway include:

- Scioto Lounge, artist Terry Allen, three bronze deer at downtown locations along the Scioto River, Completed September 2015
- Public Art Bike Racks (9), four artist/artist teams Michael B. Hays, Wes Kull, Glen Holland, and Tim Lai/Eliza Ho, part of a pilot program at eight recreation centers and the Dublin Road Public Utility Complex (anticipated installation 9/15)
- Livingston Park Public Art Project, matching grant public art project in partnership with the Neighborhood Design Center (anticipated installation fall 2016)
- Parsons Avenue Public Art Project, artist, Olga Ziemka, artist design team project with the Department of Public Service (underway, installation pending based on streetscape improvement schedule)
- Restoration of existing artworks;
 - Kwanza Playground at English Park, completed 2014
 - Eagle and Shield at the Cultural Arts Center, completed 2014
 - Friedrich Schiller statue, Schiller Park, completed 2014
 - Lincoln Goodale bust, Goodale Park, completed 2014
 - Assorted smaller sculptures, memorials and plaques, completed 2014
 - Firefighter's Memorial, pending Council approval, fall 2015

For more information about the Harrison West Public Art Project or the Columbus Public Art Program contact:

Lori Baudro, AICP
Columbus Planning Division
50 W. Gay Street 4th floor
Columbus, Ohio 43215
t. 614.645.6986



25 MAY, 2105

TO: LORI BAUDRO

FROM: TODD KIME

PLEASE ACCEPT MY SUBMISSION FOR THE HARRISON PARK PROJECT
PRELIMINARY REVIEW.

ENCLOSED ARE:

SITE PLANS

ELEVATIONS & DETAILS

RENDERINGS

ARTIST CONCEPT LETTER

PRELIMINARY BUDGET

SCHEDULE/TIME FRAME

MAINTENANCE/UPKEEP REQUIREMENTS

FABRIACTION METHOD.

FUSED GLASS SAMPLES TO SHOW THICKNESS AND STYLES OF GLASS.

IF THERE IS ANYTHING ELSE YOU REQUIRE PLEASE CONTACT ME VIA EMAIL.

THANK YOU,

TODD



KIME - "THROUGH" ARTIST CONCEPT

A SENSE OF ARRIVAL.
A GATEWAY.
A GREETING OF WELCOME.

IN IT'S MOST SIMPLISTIC FORM, "THROUGH" IS A WELCOMING ENTRY TO HARRISON PARK.

THE VERTICAL "POSTS" AND HORIZONTAL "HEADER" FORMING THE ARCH IS INSPIRED BY THE ARCHITECTURE OF THE HARRISON PARK NEIGHBORHOOD. PREVALENT THROUGHOUT THE AREA ARE ENTRYWAYS AND PORCHES WELCOMING PEOPLE INTO THE HOMES AND PLACES OF THE AREA'S RESIDENTS. FRAMING THE SIDEWALK AT THE FRONT OF THE PARK, IT INVITES PEOPLE "THROUGH" AS THE FRONT PORCH OF HARRISON PARK.

THE MATERIALS USED IN "THROUGH" ARE A CORTEN (WEATHERING) STEEL FRAME WITH CUT OPENINGS FEATURING COLORFUL FUSED GLASS PANELS VISIBLE FROM BOTH SIDES OF THE SCULPTURE. THE WEATHERED TEXTURE OF THE STEEL WILL LOOK AS IF THE MATERIAL WAS SALVAGED FROM THE INDUSTRIAL BUILDINGS THE AREA WAS RECLAIMED FROM. THIS PAYS RESPECT TO THE PARK'S PAST LIFE AND GIVES THE SCULPTURE THE APPEARANCE OF STRENGTH AND PERMANENCE.

THE STEEL FRAME WILL HAVE RIVET LIKE CONNECTIONS USING OVERSIZED STEEL BOLTS GIVING THE SCULPTURE A VINTAGE FEEL AS WELL.

INSPIRED BY THE COLORFUL PORCHES THROUGHOUT THE HARRISON PARK AREA, THE GLASS PANELS SHALL BE THICK SLABS OF GLASS TEXTURED AND FORMED TO ALLOW SUNLIGHT AND SHADOWS TO PLAY ON THE GLASS AS LIGHT PASSES THROUGH, BEHIND AND AROUND IT. THE MULTICOLORED GLASS GIVES THE SCULPTURE A WHIMSICAL AND PLAYFUL QUALITY, PERFECT FOR THE FRONT PORCH OF THE PARK.

WE INVITE YOU TO COME "THROUGH".



KIME - "THROUGH" FABRICATION METHOD

STEEL:

ALL STEEL AND FASTENERS TO BE CORTEN "WEATHERING" STEEL.

STEEL BEAMS AND PLATES TO HAVE CNC PLASMA CUT OPENINGS AND BOLT HOLES.

BEAMS TO HAVE END CAPS WITH WELDED CONNECTIONS.

INDIVIDUAL OPENINGS WILL HAVE 1" DEEP STEEL FRAMES TO CREATE "GLASS PANEL CHAMBERS" TO HOLD INDIVIDUAL FUSED GLASS SLABS.

STEEL BACKER PLATES WITH MATCHING OPENINGS WILL BE BOLTED TO STEEL BEAMS TO CREATE A "SANDWICH EFFECT"

ALL CONNECTIONS WILL BE BOLTED.

ALL STEEL COMPONENTS WILL BE SANDBLASTED AND GIVEN AN OXIDIZING TREATMENT.

GLASS:

SLABS WILL BE FORMED FROM (8) LAYES OF 1/8" GLASS SHEETS TO FORM 1" THICK SLABS. ALL GLASS TO BE SYSTEM 96 RATED GLASS TO ENSURE UNIFORM COEFFICIENT OF EXPANSION. GLASS WILL BE KILN FUSED AND ANNEALED TO FORM 1" THICK SOLID SLABS.

GLASS TEXTURES WILL BE KILN FORMED TO ENSURE UNIFORMITY.

ALL GLASS PANELS WILL BE PLACED INSIDE INDIVIDUAL GLASS CHAMBERS, GLASS PANELS WILL BE SET WITH "MASTIC" ADHESIVE OR EQUAL. GLASS WILL BE FULLY ENCASED AROUND PERIMETER IN STEEL CHAMBER WITH A MINIMUM OVERLAP OF STEEL N THE GLASS OF 1/2".

FRAMES THREE COMPONENTS (2 COLUMNS & 1 HEADER) TO BE FIELD ASSEMBLED. FINAL ASSEMBLED ARCH WILL BE SET ONTO (2) CONCRETE PIERS.

CONCRETE PIERS WILL BE POURED IN PLACE, 32" X 32" X 60" DEEP REINFORCED CONCRETE. (6) 3/4" BOLTS ON EACH PIER WILL SECURE ARCH IN PLACE. PIERS TO ENGINEERED, SEE ATTACHED PLANS.

ADDITIONAL BEDS WITH LILIES TO MATCH EXISTING LILY BED TO BE ADDED TO THE SOUTH SIDE.



KIME - "THROUGH" MAINTENANCE/UPKEEP

THERE IS MINIMAL MAINTENANCE & UPKEEP REQUIRED WITH THE PROPOSED SCULPTURE.

OCCASIONAL SCRUBBING/POWERWASHING TO REMOVE BIRD DROPPINGS IF DESIRED SHOULD BE THE ONLY SIGNIFICANT UPKEEP REQUIRED.

TRIMMING DOWN OF LILLIES/WEEDING OF SURROUNDING BEDS.



KIME - "THROUGH" SCHEDULE/TIMELINE

SEPTEMBER-OCTOBER 2015

- FINALIZE CAD WORK AND ENGINEERING
- LAYOUT CAD FILE FOR CNC PLASMA CUTTER.

OCTOBER-NOVEMBER 2015

- ALL STEEL PLASMA CUT, WELDED CONNECTION COMPLETED
- START GLASS PANEL FUSING

DECEMBER 2015

- SANDBLAST & OXIDIZE STEEL
- CONTINUE GLASS PANEL FUSING

JANUARY -FEBRUARY 2016

- FINALIZE GLASS PANEL FUSING
- SET GLASS INTO CHAMBERS

MARCH 2016

- FOUNDATIONS INSTALLED
- COMPONENTS ASSEMBLED
- FINAL SCULPTURE ADJUSTMENTS

APRIL 2016

- SCULPTURE INSTALLED

MAY 2016

- DEDICATION??



National Register of Historic Places
P.O. Box 163442 • Columbus, Ohio 43216
www.HarrisonWest.org

September 3, 2015

Lori Baudro
Program Coordinator
Planning Division
City of Columbus
109 N. Front St., Ground Floor
Columbus, Ohio 43215

Dear Lori,

The Harrison West Society would like to thank you for helping us through the process of selecting artists, narrowing down the selections, and ultimately helping us get out the vote to pick our new artwork!

We were very excited to find out that, with over 600 votes, *Through* by Todd Kime was chosen as the final art installation for Harrison Park. At our August general meeting, the society voted unanimously to affirm the selection of Kime's proposal. We look forward to its fabrication and installation in 2016.

Tim Price
President, Harrison West Society
for the membership of the society
cc: Matthew Williams

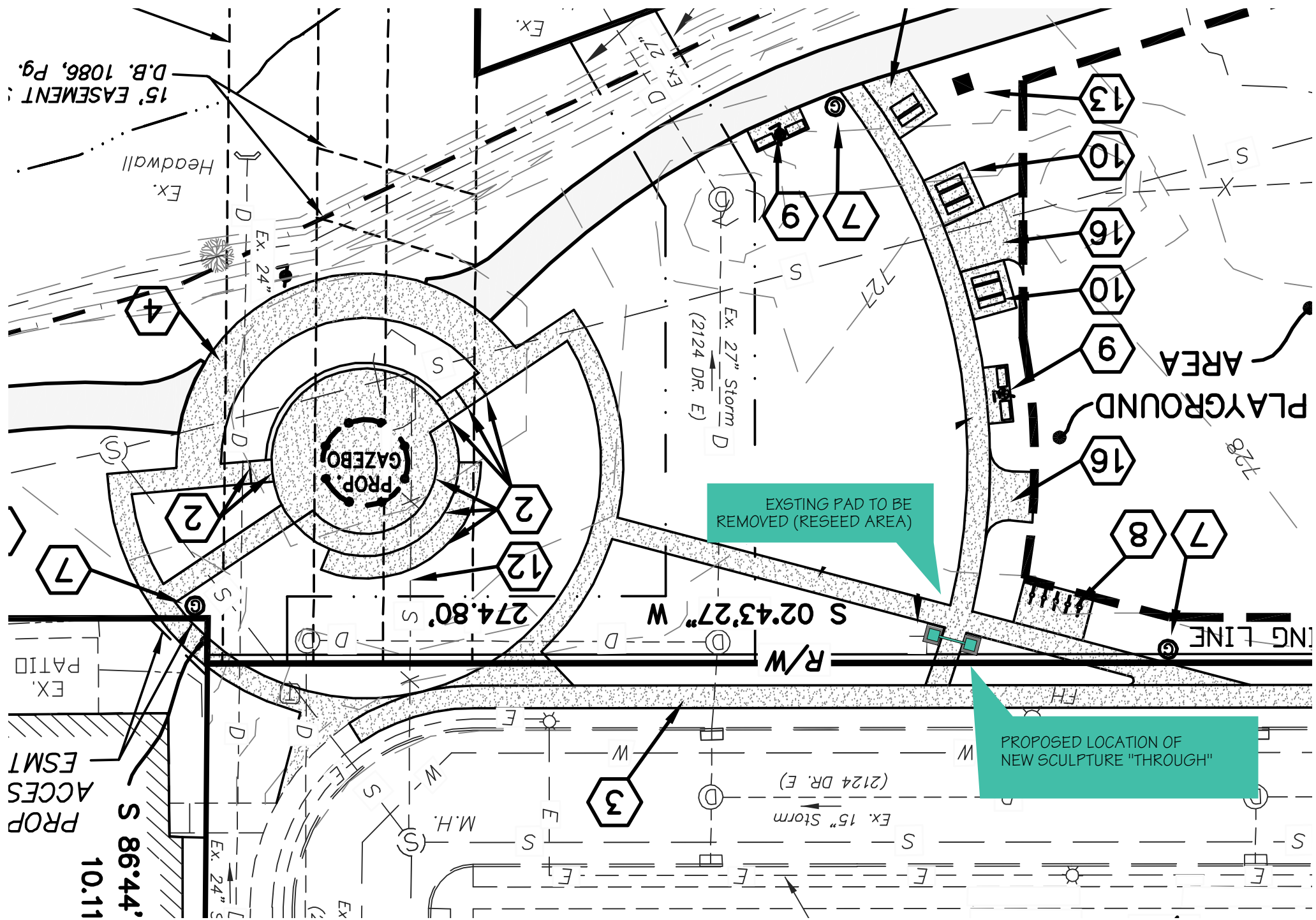
PRESIDENT
Tim Price
president@harrisonwest.org

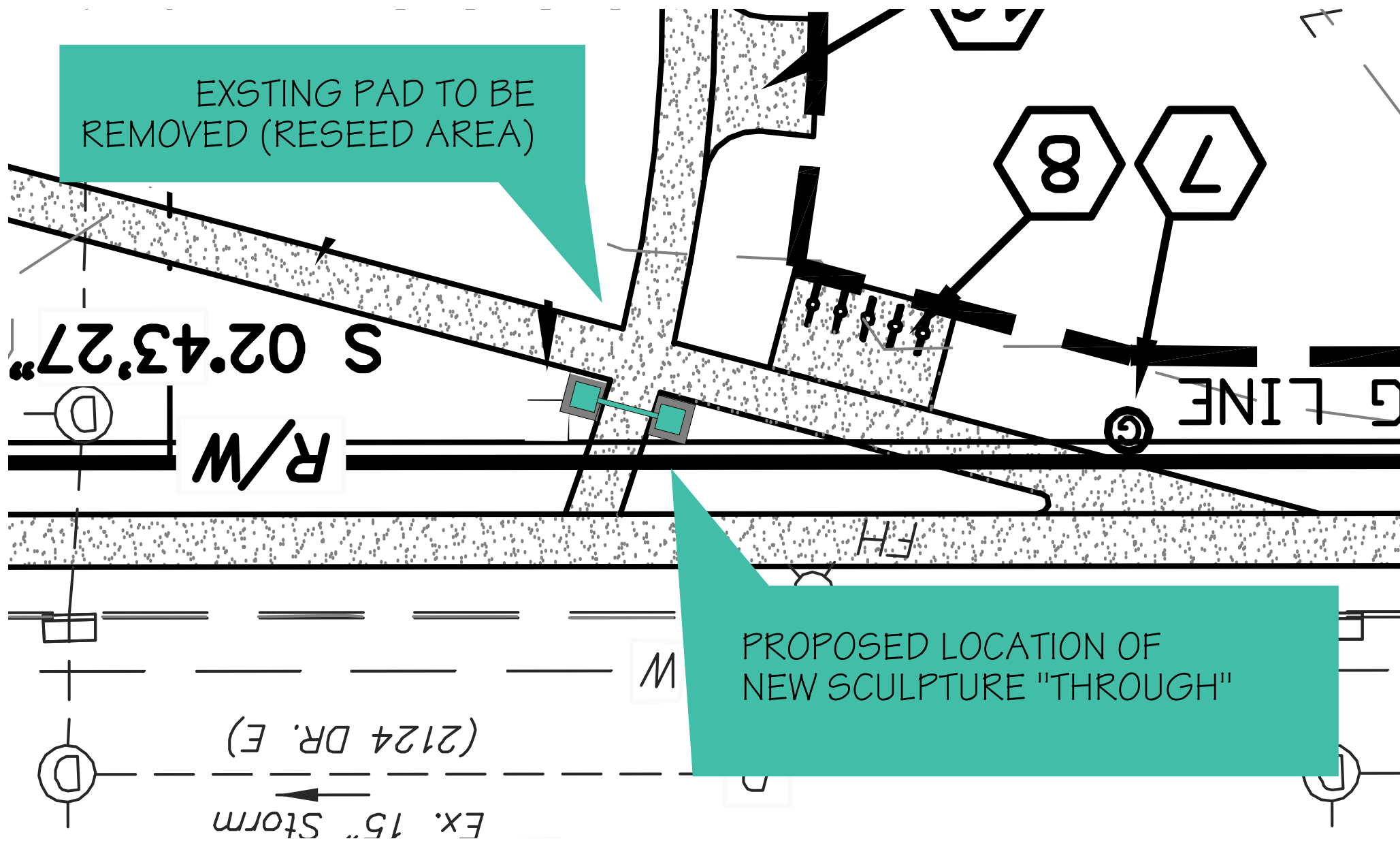
VICE PRESIDENT
David Carey
vicepresident@harrisonwest.org

SECRETARY
Mary Martineau
secretary@harrisonwest.org

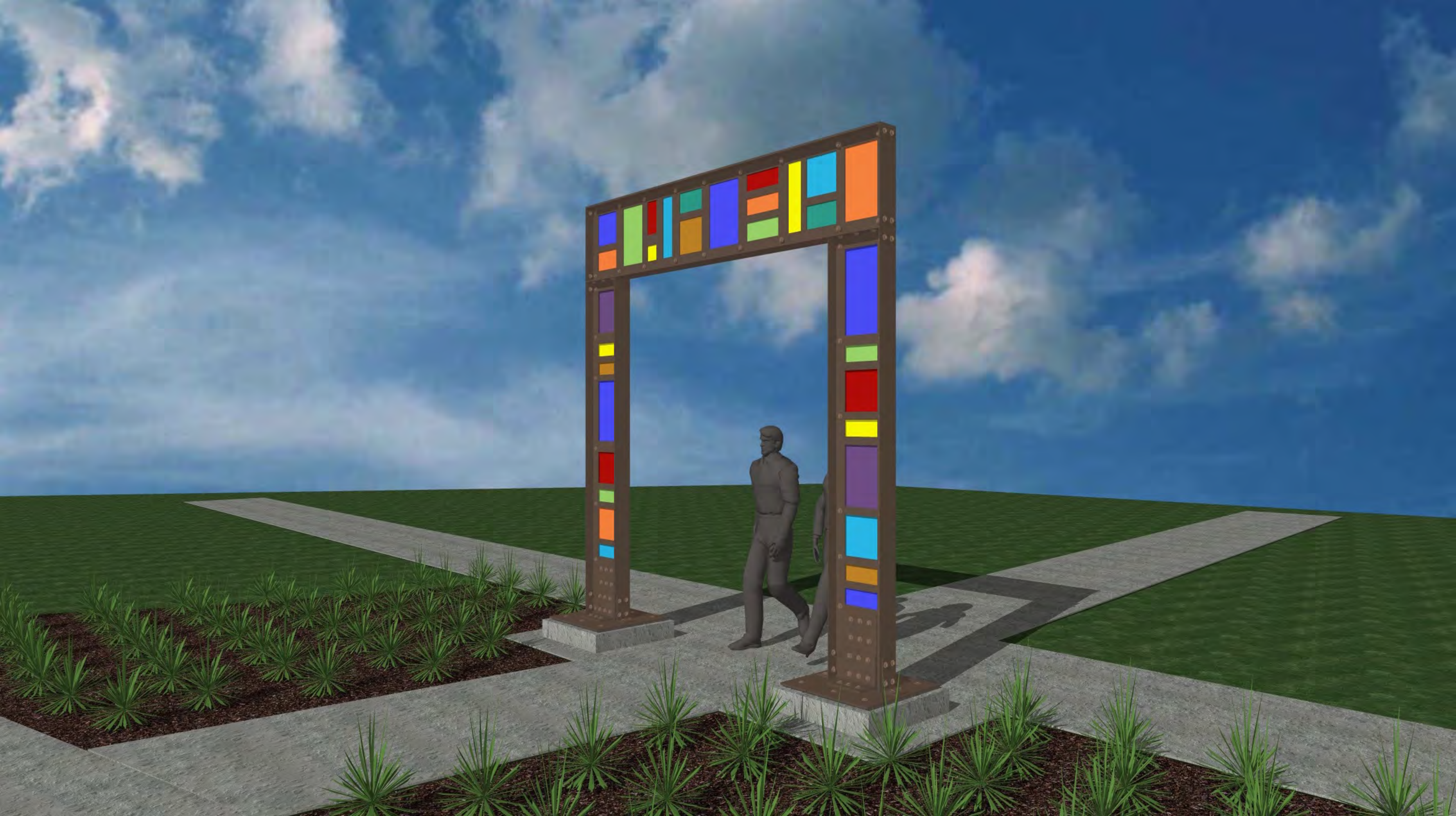
TREASURER
Adrienne Ruenzi
treasurer@harrisonwest.org







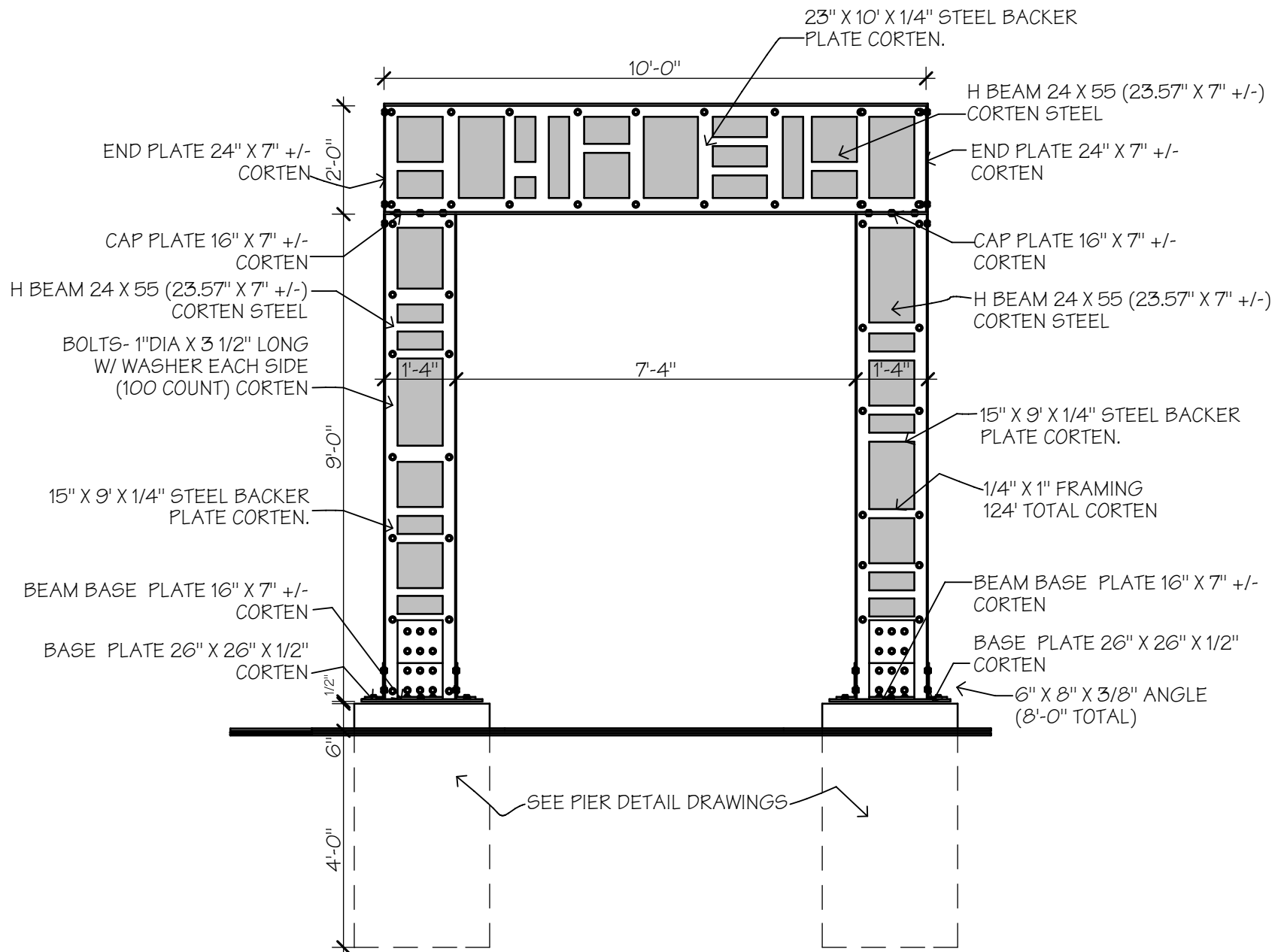




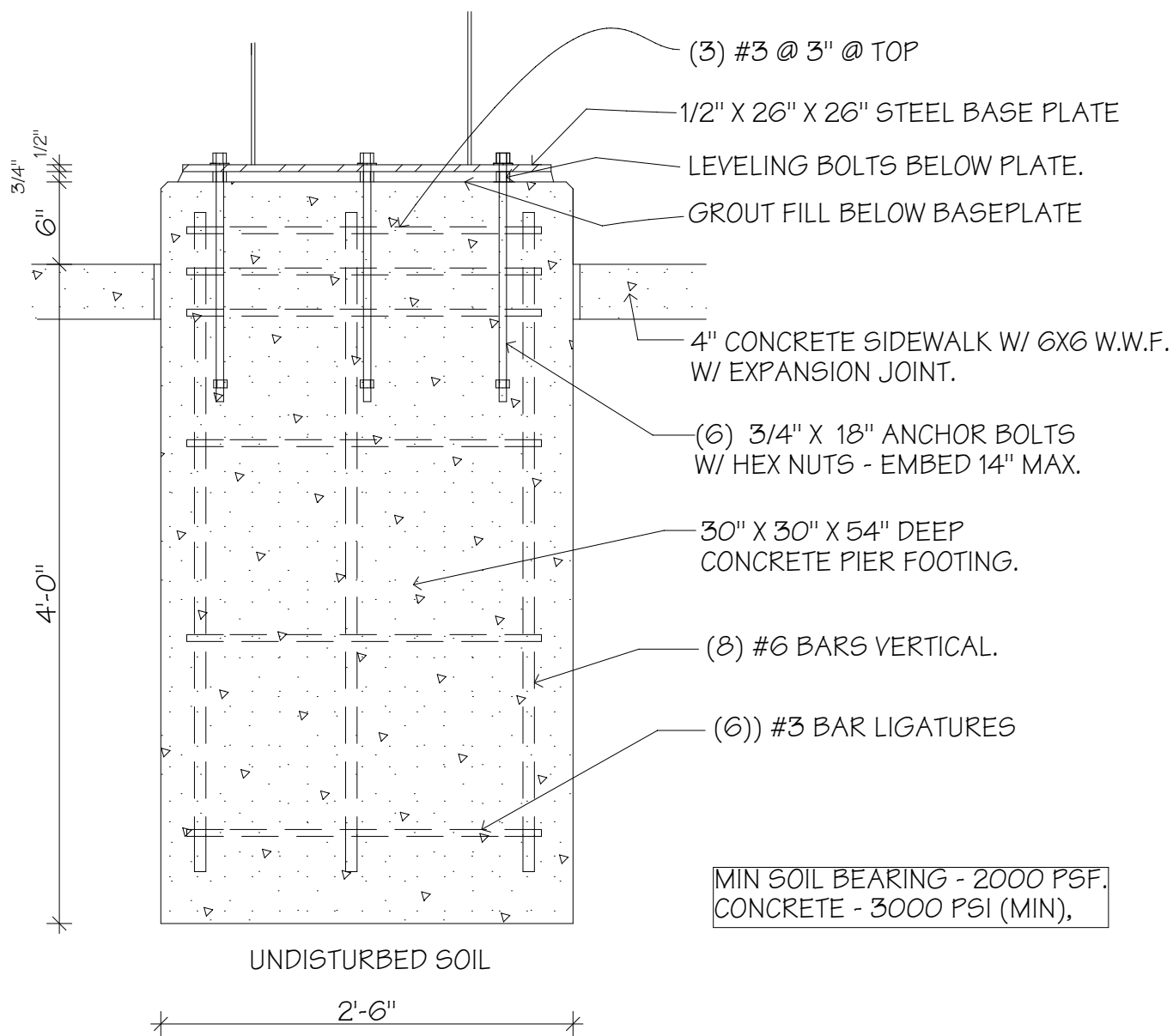




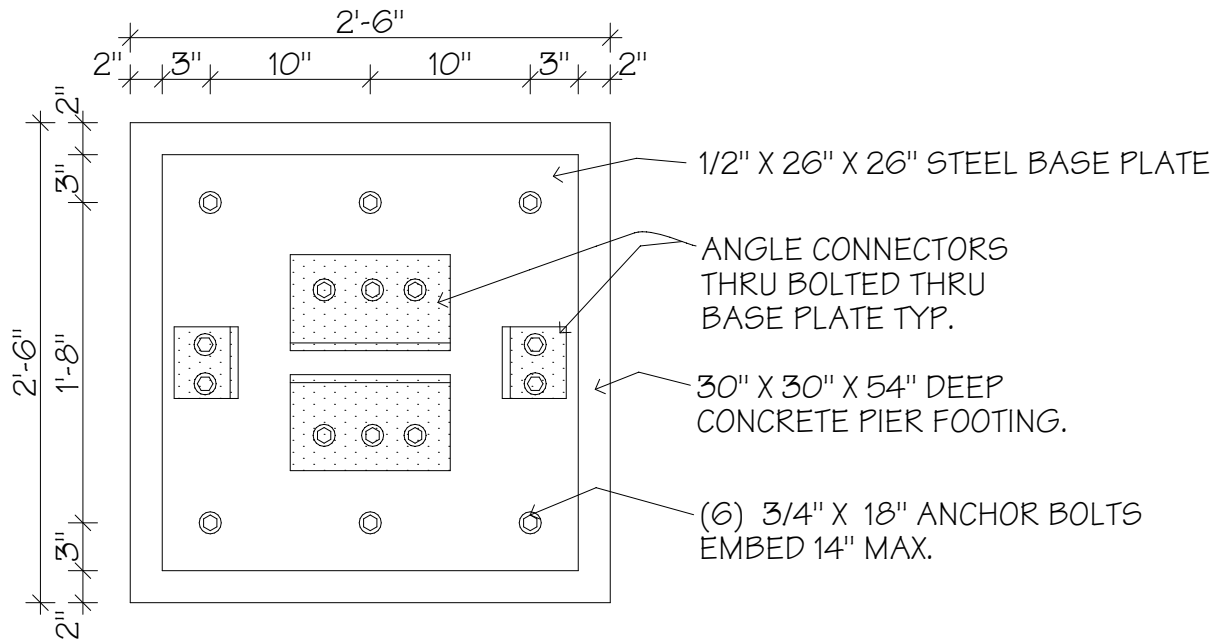




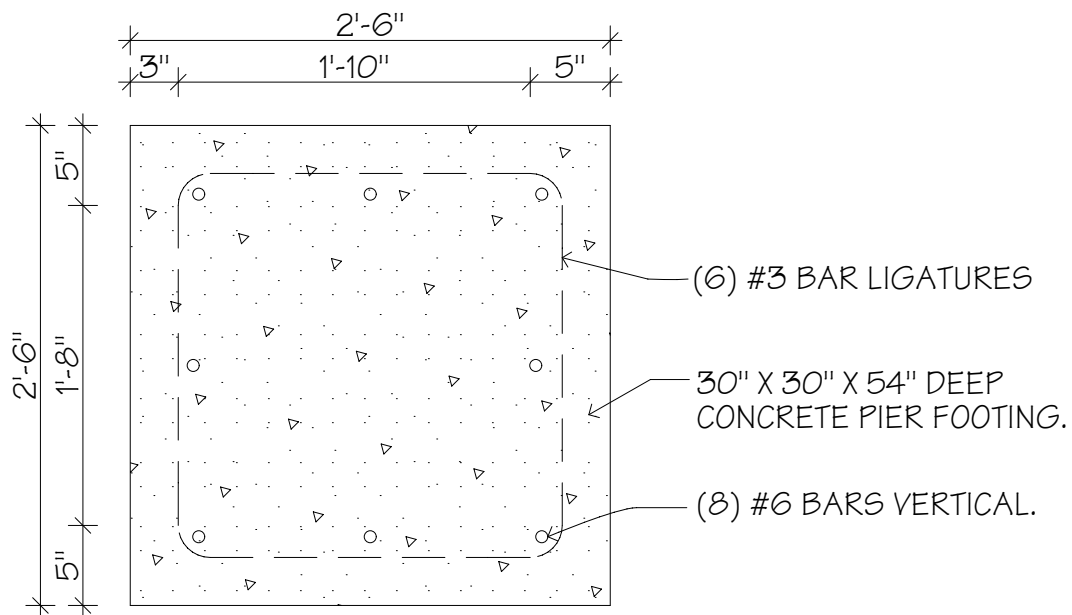
ELEVATION



PIER ELEVATION



BASE PLATE PLAN



PIER PLAN



KIME - "THROUGH" BUDGET

MATERIALS:	
STEEL -	\$4900
GLASS-	\$5400
LUMBER (CRATING/FORMS)	\$400
KILN TIME RENTAL	\$5000
PLASMA CUTTING SERVICE	\$3000
FABRICATION STEEL & GLASS	\$20000
SANDBLASTING	\$1200
OXIDATION/FINISH	\$1000
ASSISTANT/LABORER	\$2500
FOUNDATION LABOR & MATERIALS	\$7000
ERECTOR/INSTALLER	\$5000
ON SITE/LOCAL DESIGN CONSULTANTS	\$2000
STRUCTURAL ENGINEERING	\$2000
PERMITTING (FOUNDATION)	\$500
INSURANCE	\$1000
STORAGE RENTAL 6 MOS @ \$20	\$1200
TRAILER RENTAL	\$500
TRAVEL	\$500
PHOTOGRAPHY	\$1500
CAD/DESIGN SERVICE	\$500
LANDSCAPING	\$2500
EXISTING SLAB REMOVAL & RESEEDING	\$500
ARTIST PROFIT	\$12000
TOTAL BUDGET	\$80,100