



TOM HUBBARD

128 Central Park Lane
Evans, GA 30809
440-409-8003

info@tomhub.com
www.tomhub.com

20 February 2017

Isabela Gould
Neighborhood Design Center
1445 Summit Street, Suite 300
Columbus, OH 43201

RE: Streetcar Sculpture #2 on Livingston Avenue
McKay Lodge Conservation Laboratory Peer Review Report

1. Powder Coat with gloss clear coat
 - a. Aluminum plate profile: orbital sanded with 60 grit sandpaper
Powder coat film build: Base coat 2.5 - 3.5mil Clear coat: 1.5mil
 - b. Powder Coat Brand: Prismatic Powders
Chantilly Lace PWB-1795, Pacific Sunset PMB-5856, RAL-1033, RAL-3004,
Clear Vision PPS-2974 (UV stable)
 - c. Powder coat applied by a custom shop using 3 stage iron phosphate process to promote bonding.
 - d. Maintenance/repair: Aerosol and liquid touch-up paint from Custom Color & Filling for repair in the field.
2. Separation of stainless steel and aluminum
 - a. Galvanic Corrosion: A nylon (approx. 0.02") gasket will be fabricated and placed between all stainless steel and aluminum connections.
 - b. Loctite will be used on all mechanical connections.

Tom Hubbard



TOM HUBBARD

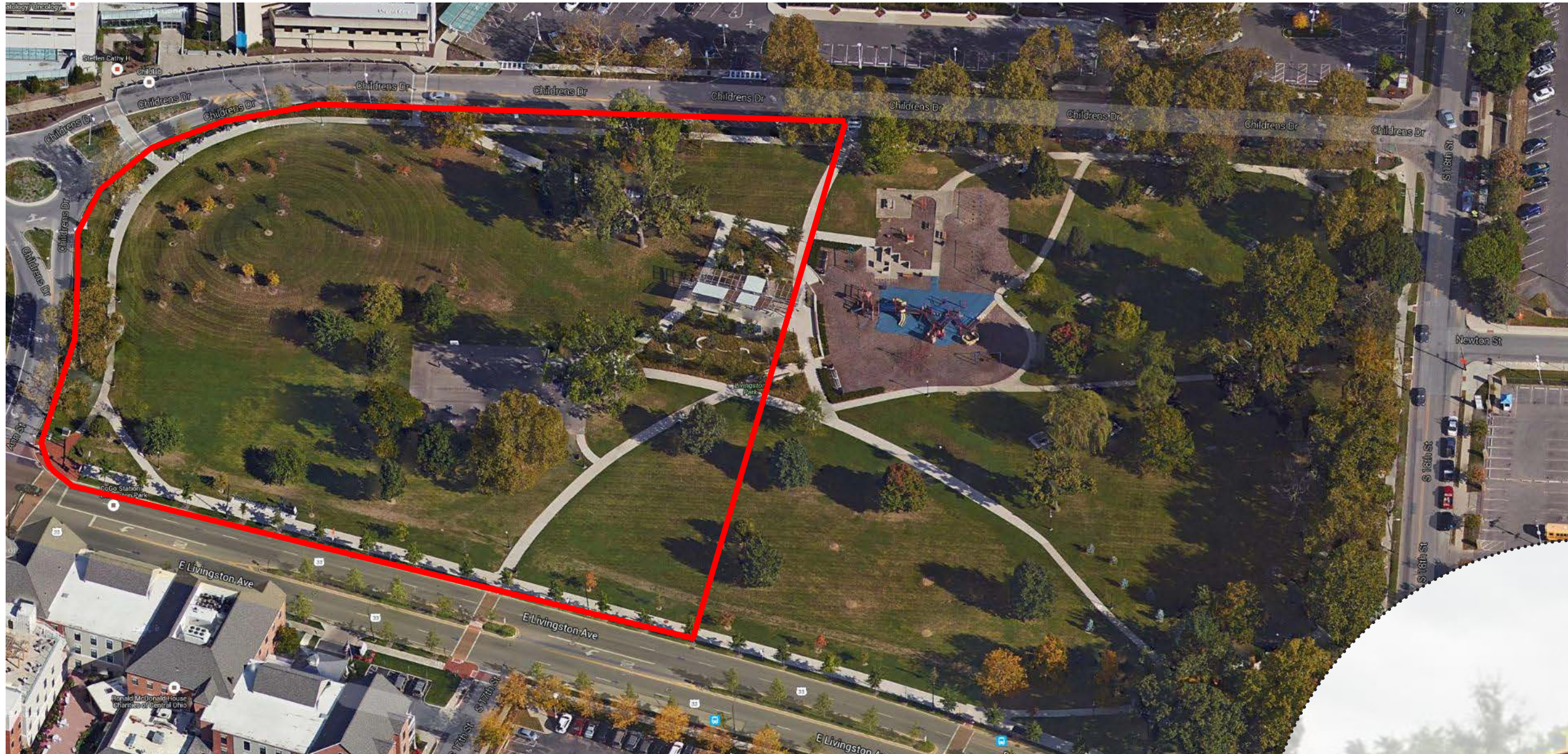
128 Central Park Lane
Evans, GA 30809
440-409-8003

info@tomhub.com
www.tomhub.com

PRODUCTION SCHEDULE

LIVINGSTON PARK STREETCAR SCULPTURE

1/11	Building Permit Issued	
1/23 – 2/17	New Site Plan to City	(4 weeks)
1-30 – 6/2	Fabrication	(18 weeks)
5/1 – 5/19	Foundations	(3 weeks)
5/15 –6/2	Inspection: Foundations	(3 weeks)
6/1 – 6/16	Installation	(2 weeks)
6/4 – 7/7	Inspection: Structure	(3 weeks)
6/14 – 6/30	Landscaping	(2 weeks)
7/17 –8/1	Dedication	

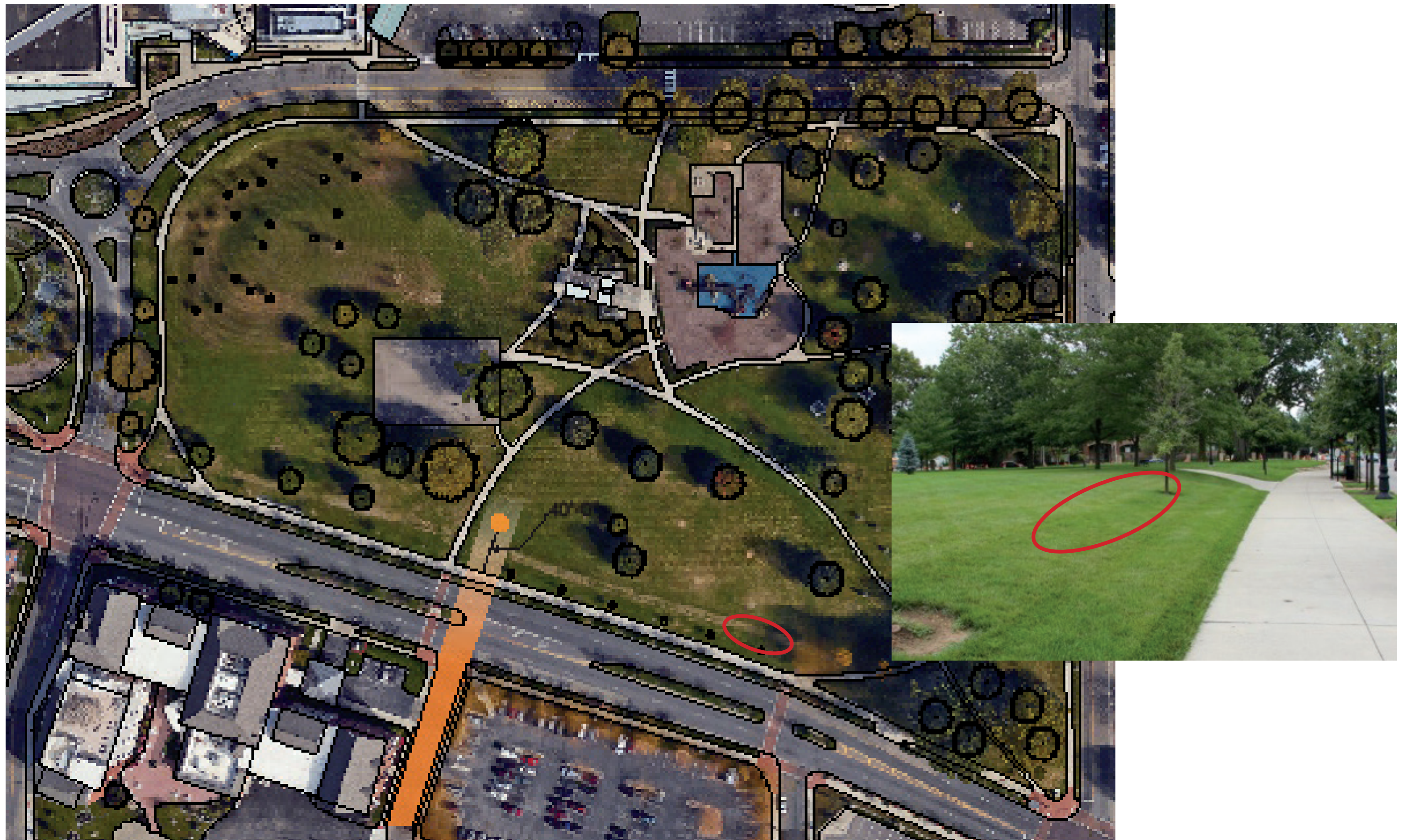


Depiction of Easement Area

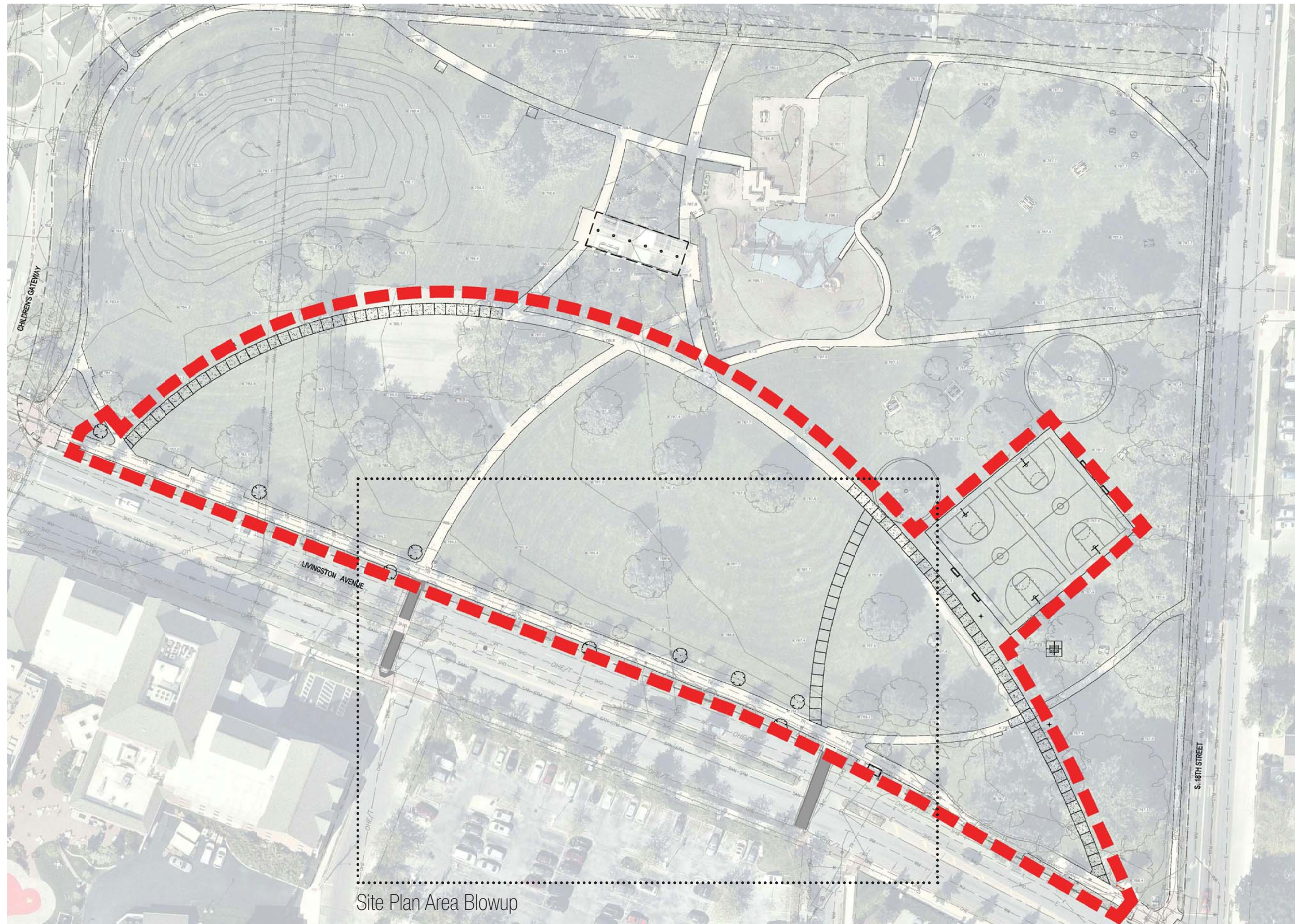
Livingston Park Sculpture #2 Update

CAC meeting
02/28/2017








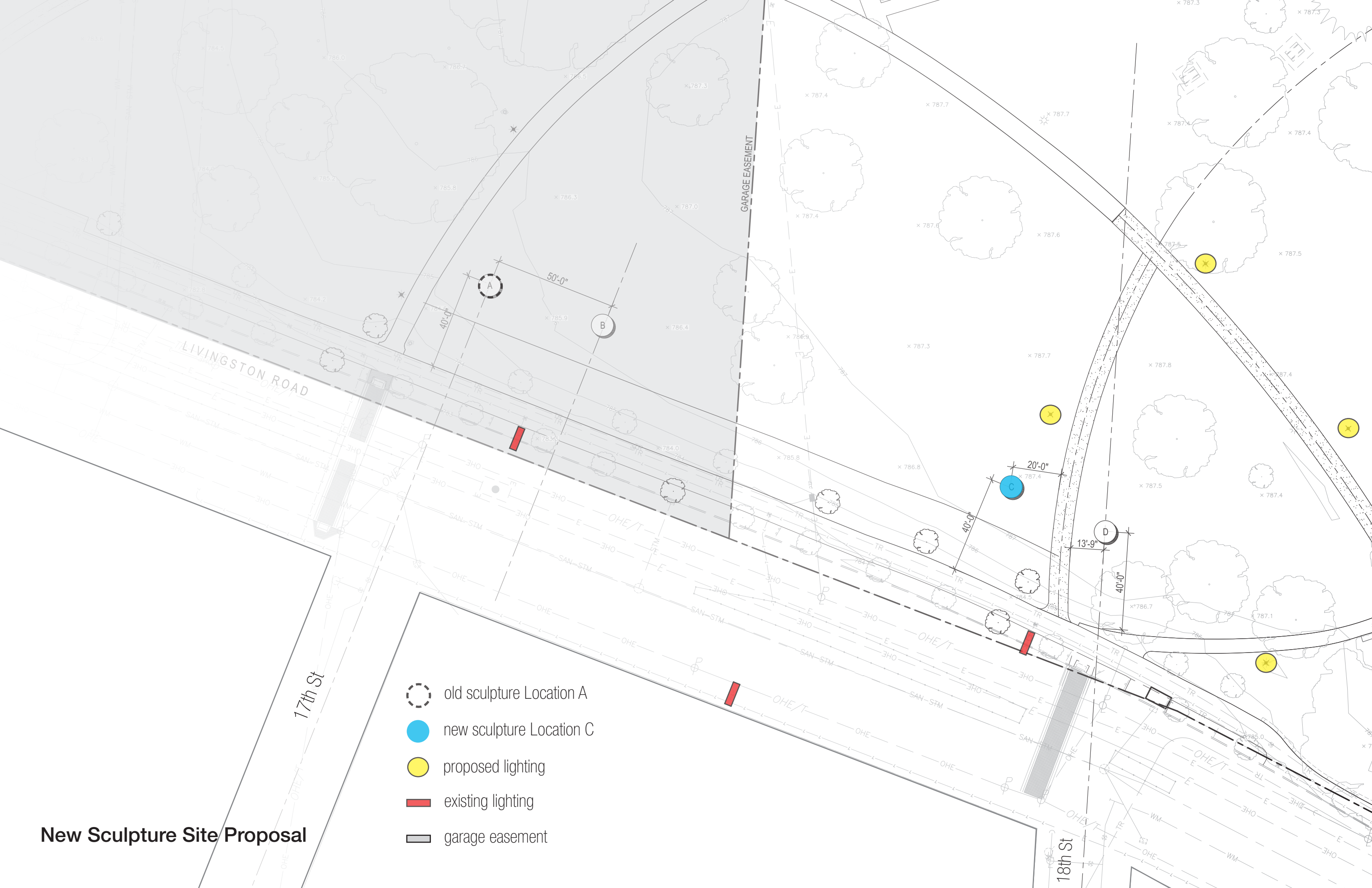
Original Site Plan



MKSK Proposed Phase II

New Sculpture Site Proposal

-  old sculpture Location A
-  new sculpture Location C
-  proposed lighting
-  existing lighting
-  garage easement





View from Livingston Ave sidewalk looking north where proposed path is to be located with sculpture Location C demarcated



View looking south toward Livingston Ave with sculpture Location C demarcated



View from proposed path looking southwest with sculpture Location C demarcated

Existing Lighting Conditions with Proposed Location C

nach RAL 1033 04

Dahliengelb

