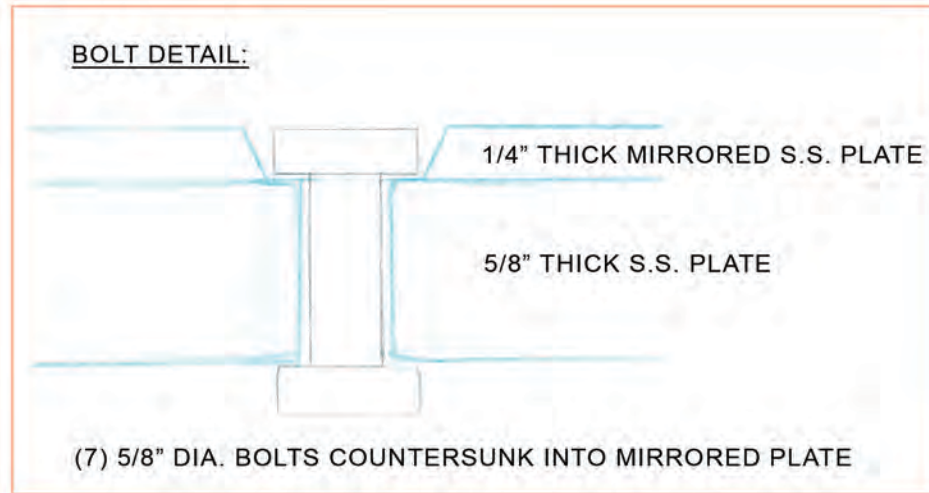


# A THOUSAND EYES PUBLIC ART PROJECT: ARTWORK CROSS-SECTION



(1000) 3" DIA. MIRRORED S.S. SPHERES

3/4" DIA. S.S. PIPE AND TUBING  
PLUG WELDED TO 5/8" S.S. PLATE

(7) 5/8" DIA. BOLTS (SEE BOLT DETAIL)

1/4" THICK MIRRORED S.S. PLATE

5/8" THICK S.S. PLATE

6" DIA. STANDARD S.S. PIPE

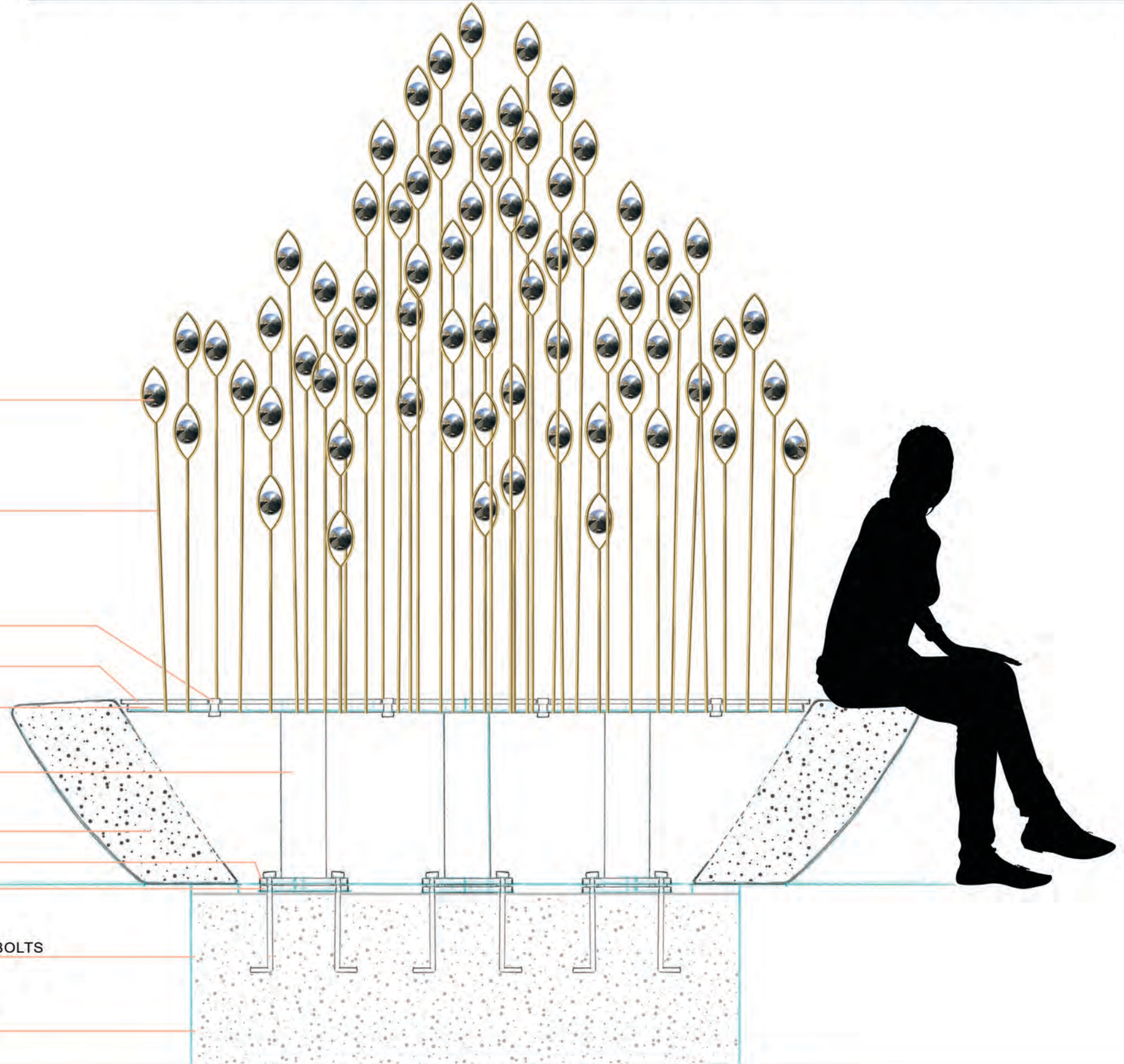
GLASS-FIBER REINFORCED CONCRETE  
PIGMENTED COLORS: COAL, ASH, STONE

5/8" x 10" x 10" S.S. PLATE

1" NON-SHRINK GROUT

(12) 3/4" DIA. X 1' LONG ANCHOR BOLTS

SCULPTURE SET IN CONCRETE  
BELOW FROST LINE (3' 6" MIN)



PROJECT:

*A Thousand Eyes* Proposed Artwork for Parsons Avenue Streetscape Project  
Materials: Glass-Fiber Reinforced Concrete, Powder Coated Stainless Steel, Mirrored Stainless Steel Spheres & Plate  
Dimensions: Each Element approx. 10' H (at highest point) X 5' W X 9" D; Four Elements Total  
Location: Along the West Side of Parsons Avenue near Buckeye Ranch and at the Corner of Oak & Parsons

olga ziemiska studio