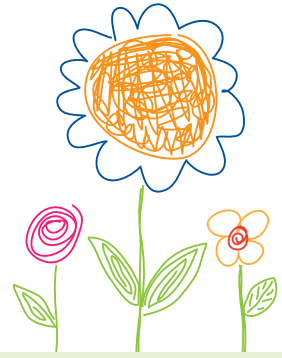


Franklin County Fetal-Infant Mortality Review 2022 Strategic Report



Background and Process

The Fetal-Infant Mortality Review (FIMR) is part of a community-wide effort to decrease fetal and infant deaths in Franklin County. The FIMR team reviews fetal and infant deaths in Franklin County and listens to the unique stories of those who have lost a child. From this process, we learn about our community's strengths and needs, and get information to help improve systems impacting the health of pregnant families and our community.

Fetal-infant mortality is a critical indicator of community health. FIMR is an action-oriented quality improvement process that assesses community conditions and monitors and works to improve service systems and community resources for women, infants and families. Research shows FIMR is an effective perinatal systems intervention.

The FIMR Case Review Team (CRT) reviews a subset of the more than 250 local cases of fetal and infant deaths and shares its findings with a Community Action Team (CAT) annually for intervention planning and implementation. In the two-tiered process, the multidisciplinary CRT reviews and analyzes de-identified fetal and infant deaths, including information collected in maternal interviews and medical, legal and social data abstractions. The CRT summarizes findings and creates actionable systems-level recommendations to improve community service delivery systems and resources. The CAT then prioritizes these recommendations and works with the community to implement interventions to improve services and resources. A feedback loop allows the CRT to determine if the needs of the community are changing over time as recommendations are implemented and to decide which interventions should be added or altered to address unmet needs.

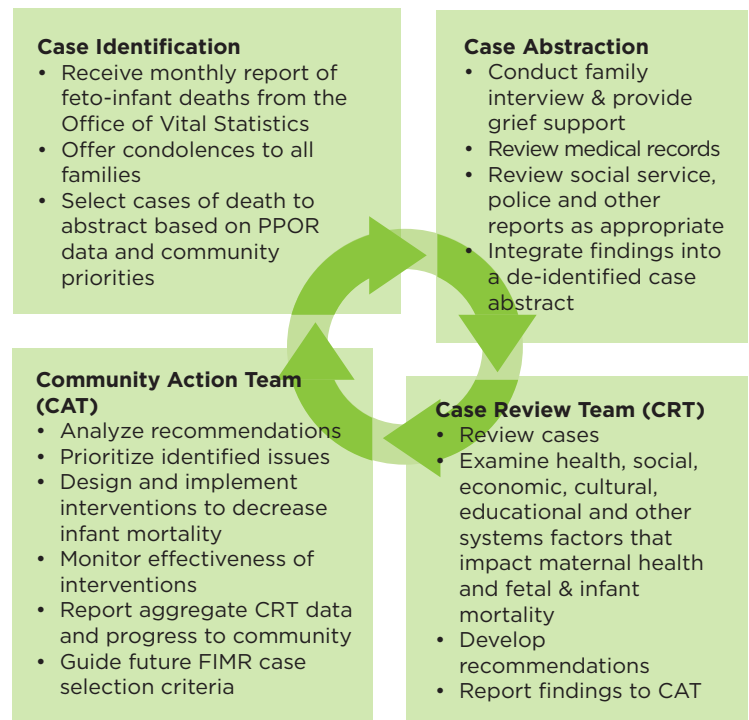
What sets FIMR apart from other death reviews is its focus on continuous quality improvement. The process begins with data from multiple sources being collected, summarized and reviewed. From there, recommendations for community changes are made and said changes are enacted. Interventions are monitored for effectiveness, and as new cases of fetal-infant death are identified, the process begins again. The review process is patterned on an evidence-based model developed by the National FIMR program. FIMR's focus is the circumstances affecting the mother and the family before, during and after the loss; not cause of death or determining "preventability."

Cases screen into the FIMR program depending on the "Perinatal Periods of Risk" Category they fall under, combined with three or more pre-determined risk factors. More information about the FIMR process, including case selection criteria, can be found on the Columbus Public Health website.

Franklin County Facts

- ~3 babies die every week in Franklin County.
- Over 100 fetal deaths reported in 2022
- Infant Mortality Rate in 2022: 8.0 per 1,000 live births
- Black-White Disparity Ratio: 2.5

Our Process



2022 FIMR Strategic Recommendations

STRATEGY 1: Empower and encourage patients to self-advocate when navigating the healthcare system	
ACTION IDEAS	SUGGESTED PARTNERS
<ul style="list-style-type: none"> • Develop a how-to or who-to guide to provide patients with the information needed to navigate their insurance plans or the healthcare system. • Draft a sample letter for reimbursement/coverage for patients to send to insurance companies. • Train providers to use a teach-back method to ensure patient understanding. 	<ul style="list-style-type: none"> • Managed Care Organizations • Advancing Health Literacy Franklin County • Central Ohio Hospital Council
STRATEGY 2: Examine the existing home visiting system	
<ul style="list-style-type: none"> • Develop a universal screening process and database (e.g., UniteUs). • Ensure referred clients are receiving timely outreach, engagement and successful enrollment in services. • Evaluate the current Coordinated Intake and Referral wait list process and its impact on clients. • Evaluate the current feedback loop with the referral source. 	<ul style="list-style-type: none"> • Home Visiting Systems Improvement group • CelebrateOne to fund evaluation
STRATEGY 3: Prioritize measures to prevent homelessness during pregnancy and postpartum	
<ul style="list-style-type: none"> • Standardize conducting screening for housing needs in medical and social services settings. • Provide enhanced access to housing assistance, housing relocation and stabilization services. • Make investments in rapid rehousing programs. • Promote the availability of Legal Aid services and partnerships. 	<ul style="list-style-type: none"> • Ohio Better Birthing Outcomes Collaborative • Legal Aid Society of Columbus, • Prenatal care providers • Columbus Coalition for the Homeless • Coalition on Homelessness and Housing in Ohio • Department of Development
STRATEGY 4: Conduct a quality assurance/quality improvement assessment of interpretation services across prenatal medical providers	
<ul style="list-style-type: none"> • Ensure that interpretation services (including in-person and phone options) are consistently available during prenatal care, the birth and postpartum care. • Upon entry into the United States, provide information on what to do if you become pregnant. 	<ul style="list-style-type: none"> • Ohio Better Birth Outcomes Collaborative • Catalyst Grant recipient - Nationwide Children's Hospital • Central Ohio Hospital Council • Community Refugee & Immigration Services • Us Together
STRATEGY 5: Ensure clients maintain insurance coverage	
<ul style="list-style-type: none"> • Develop and disseminate information on Medicaid enrollment and reenrollment. • Provide training for staff on how to assist clients in navigating Medicaid unwinding and manual renewal requirements. • Ensure staff are aware of navigator access resources. • Develop/obtain a tool that describes general MCO plan benefits. 	<ul style="list-style-type: none"> • Managed Care Organizations • ACA Navigators • CelebrateOne • Moms2B • Health Impact Ohio • Ohio Department of Job and Family Services

Continued >>>

2022 FIMR Strategic Recommendations, *continued*

STRATEGY 6: Complete mental health screenings early and regularly during pregnancy and postpartum	
ACTION IDEAS	SUGGESTED PARTNERS
<ul style="list-style-type: none"> • Prioritize pregnant women for mental health services. • Evaluate the referral follow-up process and effectiveness. • Identify a shared database for referrals such as UniteUs. • Ensure providers and social services agencies are trained in mental health screening and referral making and follow up. • Ensure there is adequate capacity for mental health providers. 	<ul style="list-style-type: none"> • ADAMH • POEM/Mental Health America of Ohio • Ohio Better Birth Outcomes Collaborative • Central Ohio Hospital Council
STRATEGY 7: Implement a patient-centered medical home model with co-located wraparound services	
<ul style="list-style-type: none"> • Have prenatal and postpartum care and primary care with co-located wraparound services to address the social determinants of health (a true one-stop shop). • Ensure consistent education and messaging. • Partner with FQHCs to see what is working and what gaps can be filled. 	<ul style="list-style-type: none"> • Ohio Better Birth Outcomes Collaborative • Central Ohio Hospital Council • FQHCs who have similar models, possible co-location partners
STRATEGY 8: Evaluate current strategies for ensuring access to prenatal care and identify opportunities for increased access	
<ul style="list-style-type: none"> • Evaluate current strategies aimed at increasing early prenatal care linkage like the StepOne program. • Identify opportunities or barriers to care such as electronic records access or funding. • Ensure emergency or respite childcare is available 24/7 for prenatal moms in need of medical care and find funding for sustainability. • Review healthcare policies around children in the clinical setting for equity and removal of barriers. 	<ul style="list-style-type: none"> • StepOne • Ohio Better Birth Outcomes Collaborative • Central Ohio Hospital Council • CelebrateOne • Managed Care Organizations

FIMR Support Services

In addition to reviewing fetal and infant deaths in Franklin County, FIMR also provides support for families who are grieving.

Bereavement Services: We offer support to all Franklin County parents grieving the loss of a pregnancy or the death of an infant. We also can help you find confidential services during this difficult time.

Support Group for Moms: A virtual monthly support group for moms who have experienced a fetal or infant loss to share their stories and receive emotional support from others going through a similar experience. The group meets virtually on the first Wednesday of the month from 1-2:30 p.m.



Learn More

Andrea N. Jarvis-Galvin, BA, ATS
 Franklin County Child Fatality Review and
 Fetal-Infant Mortality Review Program Coordinator
 614-645-6537
anjarvis-galvin@columbus.gov
www.columbus.gov/FIMR