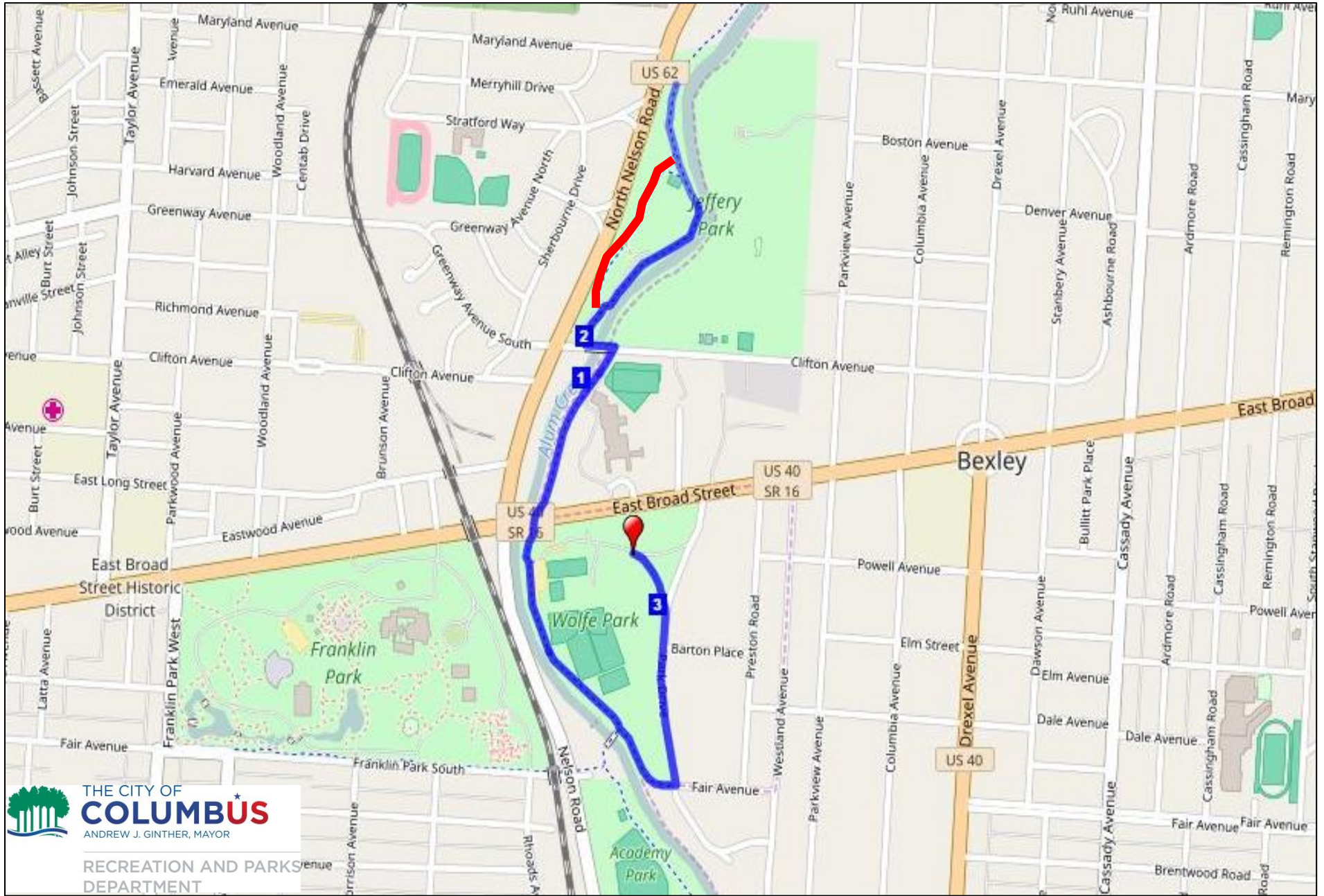


Wolfe Park 1

3.1 Miles



RECREATION AND PARKS
DEPARTMENT

Wolfe Park 1

Start on the service road in front of Wolfe Park shelter house and head east

Turn right (south) on Park Dr

Turn right (west) on bike path near Park Dr and Fair Ave

Follow path north and cross Clifton Ave into Nelson Park

Stay to the right (east side) on the trail

Continue north to a turnaround point and return south

****Stay to the right (west side) on the trail of Nelson Park** (optional)**

Cross Clifton Ave and continue south

Turn left on Park Dr

Finish back on the service road in front of Wolfe Park shelter house.

Wolfe Park 1

Course Maximum Capacity

500 Participants

Park Rental / Misc. Fees

Wolfe Park Shelter House

8a-12p Non-Profit \$260

8a-12p For-Profit \$280

1-5p Non-Profit \$260

1-5p For-Profit \$280

6-11p Non-Profit \$330

6-11p For-Profit \$350

Overflow parking can be requested at St Charles by calling 614-252-6714.

Parking Meters on Course

N/A

Notifications

Race organizers are encouraged to place race in progress signs on the bike path to notify recreational trail users of your race.

Sample signs can be found online in the Race Planning Guide at www.columbusrecparks.com.

Traffic Control Devices

Please refer to the attached traffic control device maps for the course. The traffic control devices are stored at Wolfe Park, but it's the responsibility of the race organizer to coordinate proper placement of all devices in accordance with the City of Columbus traffic safety standards.

*****All figures and fees are subject to change*****

