

## Healthy Places Walkability Study Southside CAN Neighborhood Pride

Columbus Public Health Healthy Places program is conducting walkability studies in the 2007 Neighborhood Pride areas. The goals of the walkability study are to increase neighborhood residents walking in their neighborhood and to identify destination places that are within walking distance. This will be done by walking with neighborhood residents to 1) identify positive places to walk in their neighborhood; 2) inventory barriers to pedestrians and bikers; and 3) identify neighborhood destinations.

### Synopsis

---

<b>Date</b>	Tuesday, July 24, 2007; 1:00pm Tuesday, September 18, 2007; 3:30p Wednesday, September 19, 2007; 5:30pm
<b>Community Participation</b>	9 community members
<b>Distance Walked</b>	4.95 miles
<b>Weather</b>	Cloudy, rainy, temperate; and beautiful fall day weather

### Neighborhood Findings

---

<b>Surveys completed</b>	5
<b>Findings of interest</b>	Consistent average to high rating for overall happiness with place to walk but average rating for safety and room to walk on sidewalks and a low rating for drivers respecting pedestrians.
<b>Most important aspects of walking (ranked in order of priority)</b>	Two neighbors rated everything (sidewalks, parks, destinations, safety, and nice things to see) as high priority.

The Southside CAN neighborhood really cares for their children. Neighbors want children to be able to safely walk to school. The neighborhood has lots of walkers as well who want to be safe as they exercise or walk leisurely. Safety to the residents means safety from crime, traffic, unsafe abandoned houses, and unchained dogs. Residents are committed to their neighborhood and willing to work to make it a nice place. A great example of this is a family who takes their children and the neighborhood children on evening walks to pick up cans.

### Overall Comments

240 Parsons Avenue  
Columbus, Ohio 43215-5331

Teresa C. Long, MD, MPH  
Health Commissioner

#### BOARD of HEALTH

Mayor Michael B. Coleman, *President Ex-Officio*      Martin S. Seltzer, JD, PhD  
John H. Boxill      Mary Ellen Wewers, PhD, MPH  
Augustus G. Parker III, MD      Jacqueline T. Williams, MS

Phone: (614) 645-7417

Fax: (614) 645-7633

TDD: (614) 645-7041

health@columbus.gov

www.publichealth.columbus.gov

## Healthy Places Walkability Study Southside CAN Neighborhood Pride

### *ADA Accessibility*

- The ADA accessibility in this neighborhood is poor, there is often only a ramp on one corner of an intersection.
- I had to use a wheelchair and the ADA ramp treads do make a difference. I now walk with a cane and ADA ramps make it easier.

### *Streets*

- Crosswalks are faded and children walk to school on Lockbourne or to the bus through the neighborhood.
- There are no sidewalks on Lockbourne and one man in a wheelchair is continuously seen navigating his wheelchair in the street.
- There is senior housing at Marion and Lockbourne but the seniors do not have sidewalks to CVS or the two banks in the vicinity.
- Drivers driver too fast on Thurman. The speed limit is only posted twice on the street. There are only two stop lights within one block of each other from Lockbourne to High Street allowing people to pick up speed.
- Karns Park is also on Thurman which makes it even more dangerous for drivers to be speeding. The signs for the park and playground are posted across or at the park, not before the park to warn drivers.
- Streets that do not have sidewalks are: Linwood south of Thurman; Mithoff around Karns Park. Typically in this neighborhood, the north/south streets do not have sidewalks.
- Sidewalks do have buffers of about 3 feet which is especially important on main thoroughfares such at Thurman.
- Safety is pretty good, you have to know where you are and be cautious of your surroundings.
- Resident on a bicycle reported: I ride defensively, you have to, and I get out of the way of cars because they won't respect me. Sidewalks would be nice, some of the ones we have have holes in them and it is especially hard for kids walking to school. Dogs that are not chained are another problem.
- Studer has great street trees for shade but no curbs or sidewalks. Lots of gravel on the street.
- North/south streets do not have sidewalks

### *Neighborhood*

- A measured walking path around Karns Park and Corpus Christi church would be nice. They both have sidewalks around except for one or two sides.
- We would like to do a walking club as a Block Watch
- I have an issue: broken glass. We have a lot of broken glass. I have diabetes and I can't risk getting glass in my foot.
- We have three schools (Southmoor Middle School, South High School, and Deshler Elementary), kids walk to school but it is not safe for them to walk everywhere.
- I have been here 11 years and seen more traffic-you have to be careful. Kids walk in the middle of the street. It is quite here and I like the neighbors but we have had a lot of robberies. I wouldn't mind cameras for safety.
- Loose dogs are my biggest problem to walking in the neighborhood.

## Healthy Places Walkability Study Southside CAN Neighborhood Pride

- I take the neighborhood kids on walks with my wife and I and our dogs. We pay them for cans they pick up in the neighborhood. We collected 400 cans in four days recently.
- It is wrong to leave dogs on chains, ropes, or inappropriate leashes. That is abuse, people don't take care of their animals.
- Low hanging wires are a problem throughout the neighborhood.
- I look for Stubby the cat on our walks (with her family).
- Around South High School there are lots with no grass, when it rains, dirt flows onto sidewalks and into the storm sewers.
- Dogs on ropes pull hard-you never know if they are friendly or not.
- A family living near Parsons Avenue: I don't walk much going east, we go west.
- Kids are on the street all day long-parents don't take any time with them.

### *Safety*

- I don't feel safe (as an adult) and kids have to walk to school.
- People have thrown stuff from cars at my grandson and I when we rode our bikes.
- Neighbor who walks with dogs: I never have any trouble, except for other loose dogs. I feel safe walking in the street when there are no sidewalks but I am aware and pay attention.
- I don't like to walk by myself, I use to but not anymore (referencing personal safety).
- Don't fee safe walking in the street, sidewalks would be nice.
- I would walk at night.
- Should have sidewalks everywhere but that doesn't stop the kids from walking.
- This is not very walkable-it is not safe.
- Resident on Hanford Street: I won't drive on 18<sup>th</sup> Street or any street from 18<sup>th</sup> west to Parsons because of criminal activity and people hanging out on the street.
- If you walk, you should be in numbers.
- I don't walk at night, big kids are standing outside talking and it is scary.
- People need to step up and get rid of weeds.
- When asked if she would walk in the neighborhood: "Walk-heck no, I'm not getting mugged. It is not safe at all, my house was broken into last week."
- Six windows were busted out in a house, I reported it twice and nothing has happened.
- I have lived in the neighborhood for 44 years, the last 10 years it went down and I don't like it. If I got my price, I would be out of here so fast it would make your head spin. None of my children live in this neighborhood. There have been 15 break-ins in the last three months and over five killings on this street (Hanford Street). Police know who does it and just smack their hands.
- I heard there is a 12 point system for juveniles and it is only 6 points for carrying a gun.
- We use to see police on bikes at the beginning of the summer, now they and the strike force have moved to German Village to take care of the rich people.
- Police say if we don't see them do it, we can't do anything.
- Street lights are poor, I want the white light to see better-they say the yellow deters crime but I don't see it working.
- Neighbor walking: I feel safe, I walk in the neighborhood.
- I don't fee safe. Eight years ago when I first moved in, it was nice. Now you don't walk by yourself and there are drugs, breaking into cars, and stealing gasoline.

## Healthy Places Walkability Study Southside CAN Neighborhood Pride

- It is safe for me and my children. I don't let my 8 year old go far. Cars run stops signs on Gates St., we need more speed limit signs.
- After this walkability study was completed, one of the participants and his wife was walking in an alley off Parsons Ave. A resident yelled at them to get out of their alley and threatened them with a dog and a gun.



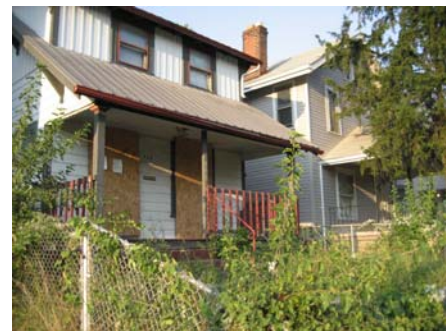
Playground sign is on the Karns Park property, not before to warn drivers they are approaching a park.



North/south street do not have sidewalks.



Faded crosswalks, children need to cross this intersection to get to school or the bus.



Absentee property owners do not take care of their property.

This report will be used to create walking maps through the neighborhood. The mile measured maps will highlight neighborhood features, safe paths and destinations. The report will also be forwarded to City of Columbus departments that can assist neighborhoods in addressing their needs.

The mission of the Healthy Places program is to enhance healthy and active living by establishing development policies and practices to reduce negative health impacts and by creating places that foster physical activity as a part of everyday life. For more information, please contact Christine Godward, Healthy Places Coordinator at 645-5318 or [CLGodward@columbus.gov](mailto:CLGodward@columbus.gov)

**Healthy Places Walkability Study  
Southside CAN Neighborhood Pride  
Addendum**

Site Specific Comments  
Routes  
All Pictures

Healthy Places Walkability Study  
 Southside CAN Neighborhood Pride

Site Specific Comments

Specific Street	Comment
<i>1<sup>st</sup> Walk</i>	
Thurman Ave	Drivers drive too fast; drivers can go from Lockborne to Champion Ave without a stop sign or street light.
Thurman Ave	A buffer exists between sidewalk and street in most places
<i>2<sup>nd</sup> Walk</i>	
1349 to 1365 Linwood Ave	Sidewalk gap
1375 Linwood Ave	Broken sidewalk
1312 Linwood Ave	Broken sidewalk
1385 Linwood Ave	Broken sidewalk
1395 Linwood Ave	Broken sidewalk
Frebis and Linwood Ave; NE corner house	Broken sidewalks, trees, gravel on sidewalks
Linwood Ave (reported at Gates Street)	Speeding on Linwood Ave
Frebis Ave	No buffer between sidewalk and street
Frebis Ave between Linwood Ave and Studer Ave	Vacant lot, sidewalk stops
Linwood Ave and Frebis Ave	Bus stop and ADA ramps but nothing to assist pedestrians across street such as crosswalk or light
1112 Frebis Ave	Bushes and dirt on sidewalk
NW corner of Frebis Ave and Lockborne Rd	The gas station car wash was turned into a drive-thru; there are three in the area on Lockborne Rd
Lockborne Rd and Frebis Ave	ADA ramps and pedestrian signals present; sediment has settled in the ADA ramp; crosswalk faded *intersection near school*
NW corner of Whittier St and Ohio Ave	Pedestrian signal behind pole, cannot see it from other corner
Studer Street/Gates Street	Have no curbs or sidewalks; difficult to clean the street; ice and rain get into basement and gardens
Lockborne Road	There are 3 schools on this street; no sidewalks; the street gets muddy in the rain
<i>3<sup>rd</sup> Walk</i>	
Thurman Ave west of Wilson Ave	Sidewalk in poor condition
Hanford Ave and 17 <sup>th</sup> Street	Couch on porch is unsightly and a health hazard
Hanford Ave and Parsons Ave	Uncomfortable intersection of pedestrians
526 Gates Ave	Very bad sidewalk
Mithoff Street and Ann Street	Very high grass and weeds
Gates Street	Cars run stop signs; more speed limit signs are needed

Healthy Places Walkability Study  
 Southside CAN Neighborhood Pride

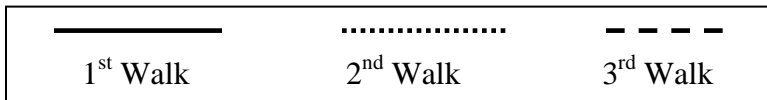
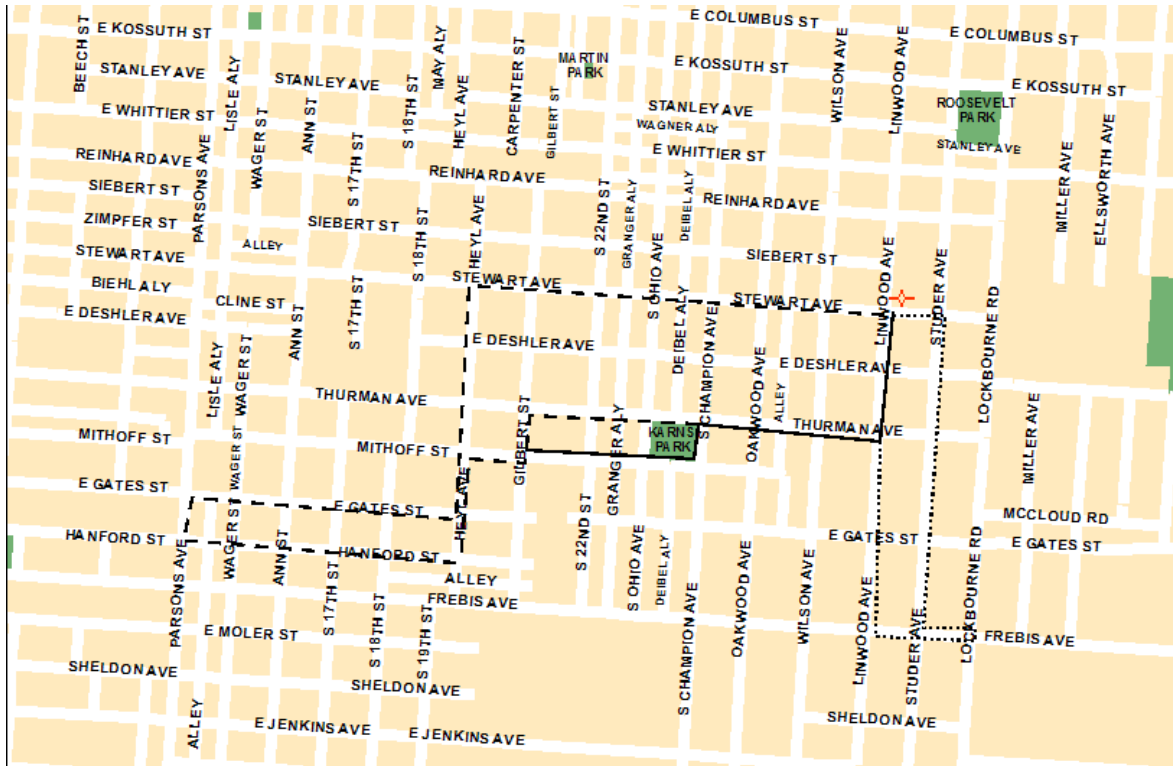
Thurman Ave across from park	Broken glass on sidewalk
Studer St	Traffic goes fast; need speed humps, have stop signs
Stewart St	Traffic goes fast; need speed humps, have stop signs

<b>Sidewalks</b>	<b>No Sidewalks</b>
Thurman Ave	Lockborne Road south of Frebis Ave
Linwood Ave from Stewart Ave to Thurman Ave	Studer Ave from Frebis to Whittier
Gates east of 18 <sup>th</sup> Street	Linwood Ave south of Thurman Ave-east side
Ohio Ave	Linwood Ave south of Gates both sides
Champion Ave	Mithoff around Karns Park
	Deshler Ave
	Mithoff Street

<b>No ADA Ramps</b>	<b>ADA Ramps</b>
Gates Street and Linwood Ave	Linwood and Frebis
Wilson Ave and Thurman Ave	Studer and Frebis
Thurman Ave and Oakwood Ave	
Thurman Ave and 22 <sup>nd</sup> Ave	
Gilbert Street and Stewart Ave	
Thurman and Linwood (Picture 7-8)	
Mithoff Street and 22 <sup>nd</sup> Street (Picture 21-23)	
Mithoff Street and Deshler Ave	

Healthy Places Walkability Study  
 Southside CAN Neighborhood Pride

Routes





Healthy Places Walkability Study  
Southside CAN Neighborhood Pride

**Pictures of 7/24/07 Walk**

---



1



2



3



4



5



6



7



8



9



10



11



12



13



14



15



16

Healthy Places Walkability Study  
 Southside CAN Neighborhood Pride



17



18



19



20



21



22



23



24

**Picture Explanation: 7/24/07 Walk**

Picture	Explanation
1	Linwood Ave south of Stewart Ave wide sidewalk (around Corpus Christi church)
2	Deschler Ave between Linwood and Lockbourne Rd, the east/west street typically do not have sidewalks
3	Deschler Ave intersection with Linwood Ave, looking west
4	Sidewalk on Linwood Ave south of Deschler (in poor condition)
5	Broken sidewalks on Linwood south of Deschler
6	Broken sidewalks on Linwood south of Deschler
7-8	The street crossing of Linwood Ave and Thurman Ave, this intersection is heavily traveled by school children; does not have ADA accessibility
9	Crosswalk and pedestrian signals at traffic light of Thurman and S. Champion Ave; Karns Park is across this street.
10-16	Karns Park-the playground is visible when adults walk the perimeter; park has a shelter house and basketball courts. Big kids often play on the court and there is no room for little kids.
17-20	Mithoff Street bordering Karns Park-this is the only street around the park without a sidewalk. Residents would like a measured walking path around the park. Sign is placed at the park and not before to warn drivers.
21	House with overgrown landscaping.
22-23	Mithoff and 22 <sup>nd</sup> Street-ADA ramps are not only on one side
24	Intersection of Oakwood Ave and Deshler Ave, ramp is in poor repair

Healthy Places Walkability Study  
Southside CAN Neighborhood Pride

Pictures of the 9/19/07 Walk

---



25



26



27



28



29



30



31



32



33



34



35



36



37



38



39



40



41



42



43



44

Healthy Places Walkability Study  
Southside CAN Neighborhood Pride



45

**Pictures of the 9/18/07 Walk**

---



46



47



48



49



50



51



52



53

Healthy Places Walkability Study  
 Southside CAN Neighborhood Pride

**Picture Explanation: 9/18/07 Walk and the 9/19/07 Walk**

<b>Picture</b>	<b>Explanation</b>
25-27	North side of Thurman Ave around park; sidewalks in poor condition and trees in path of pedestrians; sidewalk is not continuous, it becomes a gravel path
28-29	Thurman Ave west of S. Ohio Ave
30-31	North/south streets do not have sidewalks
32	Tree lined streets
33-36	Hanford between Heyl and 18 <sup>th</sup> ; houses are overgrown with weeds and grass
37	Hanford Street; sidewalk is overgrown with weeds
38-41	495 Hanford; burned house; debris with nails is sticking out over the sidewalk
42	House on Gates St. that has replaced their sidewalk
43-44	731 Stewart; Sidewalk section is actually caved in and a large hole is present
45	757 Stewart-house is being rehabbed and owners fixed sidewalk
46-48	Lockbourne and Frebis intersection. Crosswalks do not have ladder striping; pedestrian signals present and ADA ramps; no sidewalks on Lockbourne south of Frebis. This is an intersection kids need to access when walking to school.
49-50	Studer Ave looking north from Frebis; great shade trees; no sidewalks or curbs which causes gravel and debris to collect on side of the road.
51-52	Studer Ave and Frebis intersection. Bus stops are at this intersection; has ADA ramps
53	House at 1283-1285 Oakwood; has been vacant and not maintained for 4-5 years. Currently a large bee colony occupies a hole in the front of house. Bees can be seen swarming from across the street.